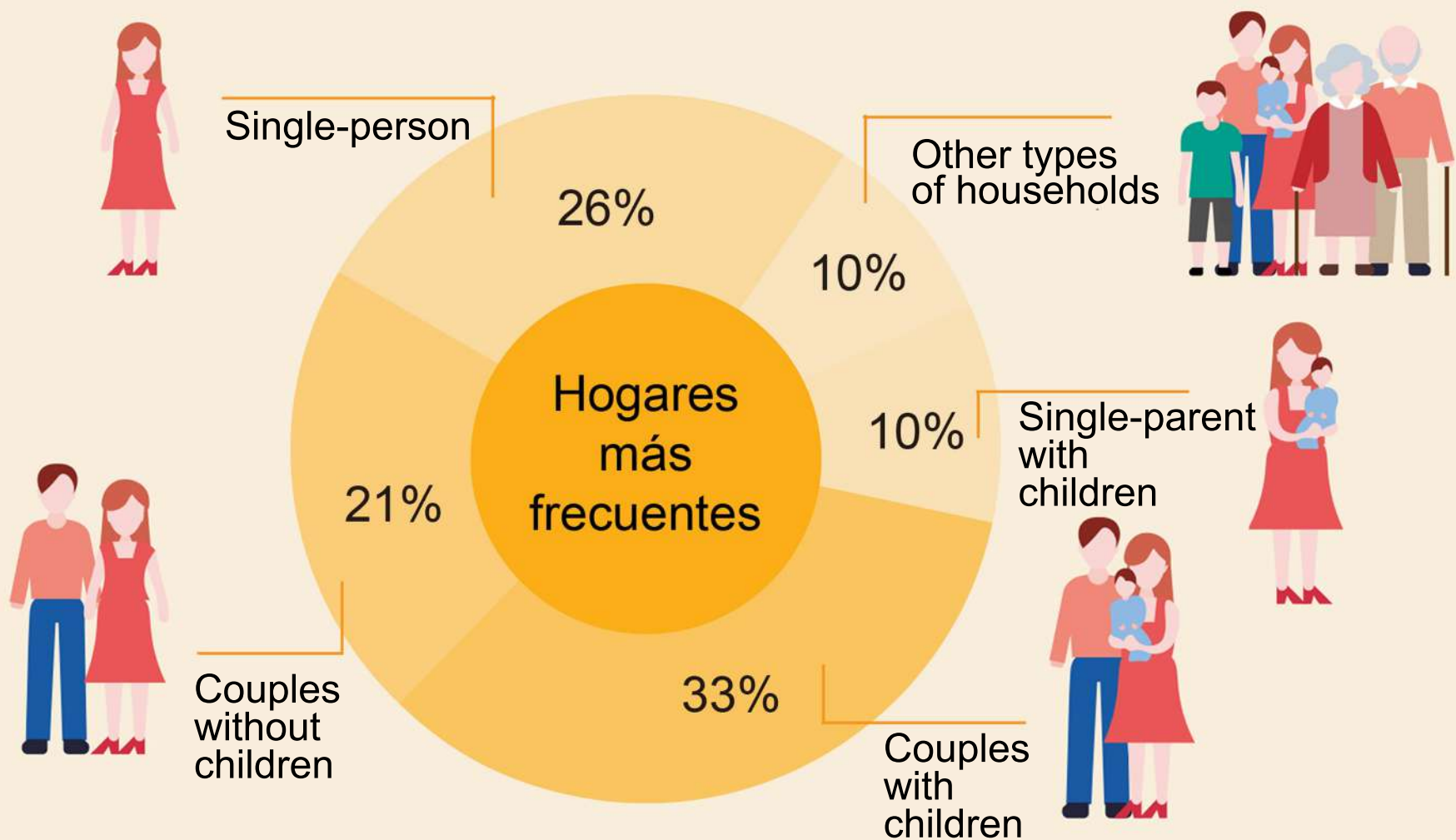
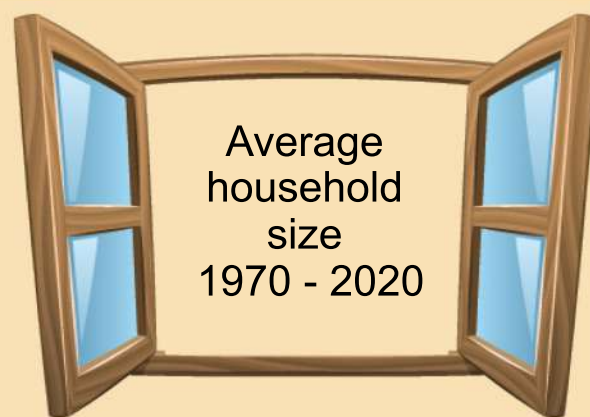
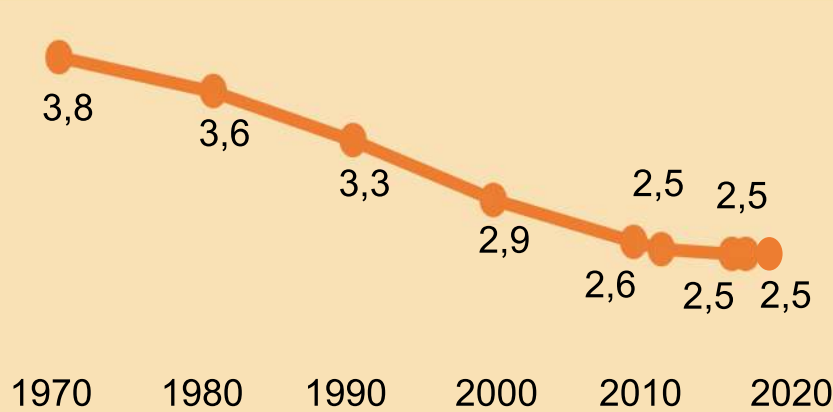


# CONTINUOUS HOUSEHOLD SURVEY IN SPAIN 2020

## 18.8 million of households

Average size  
2.5 persons per household

Evolution in number of households by size 2013 - 2020 (%)



Single person households of people aged 65+



+18.0%

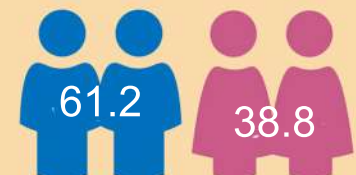
Compared to 2013

Couples



99.0%

Heterosexuals



1.0%

Homosexuals