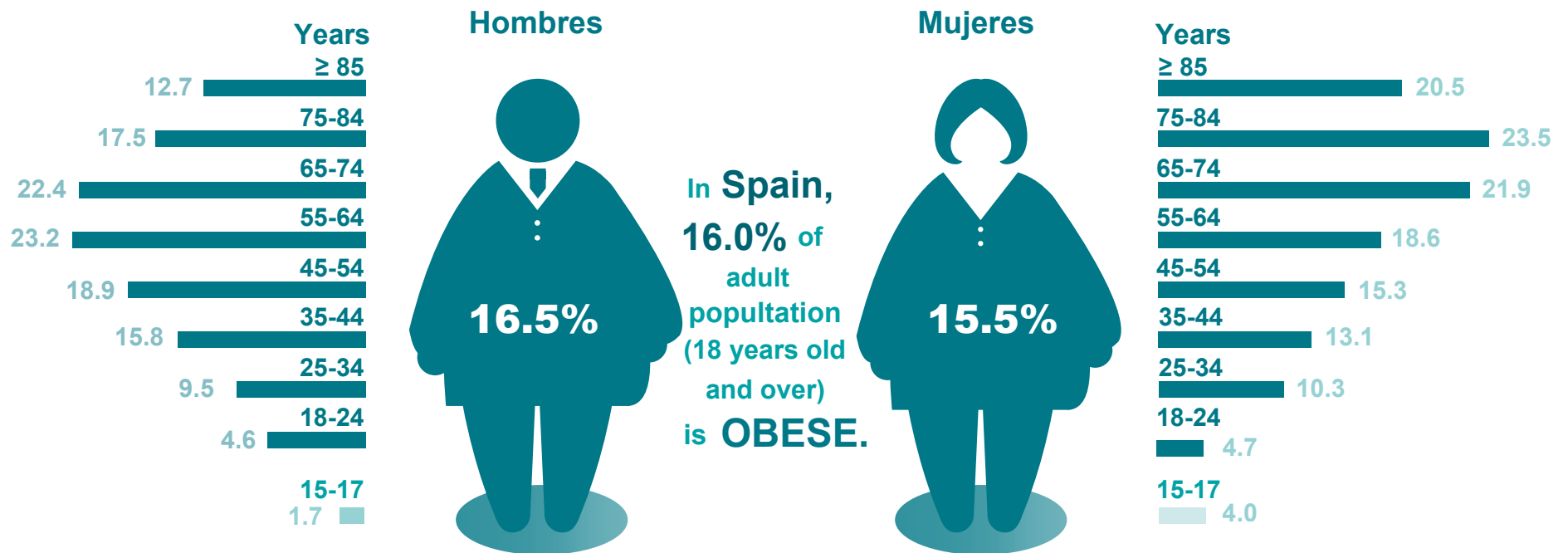


OBESITY 2020

Spain and the UE

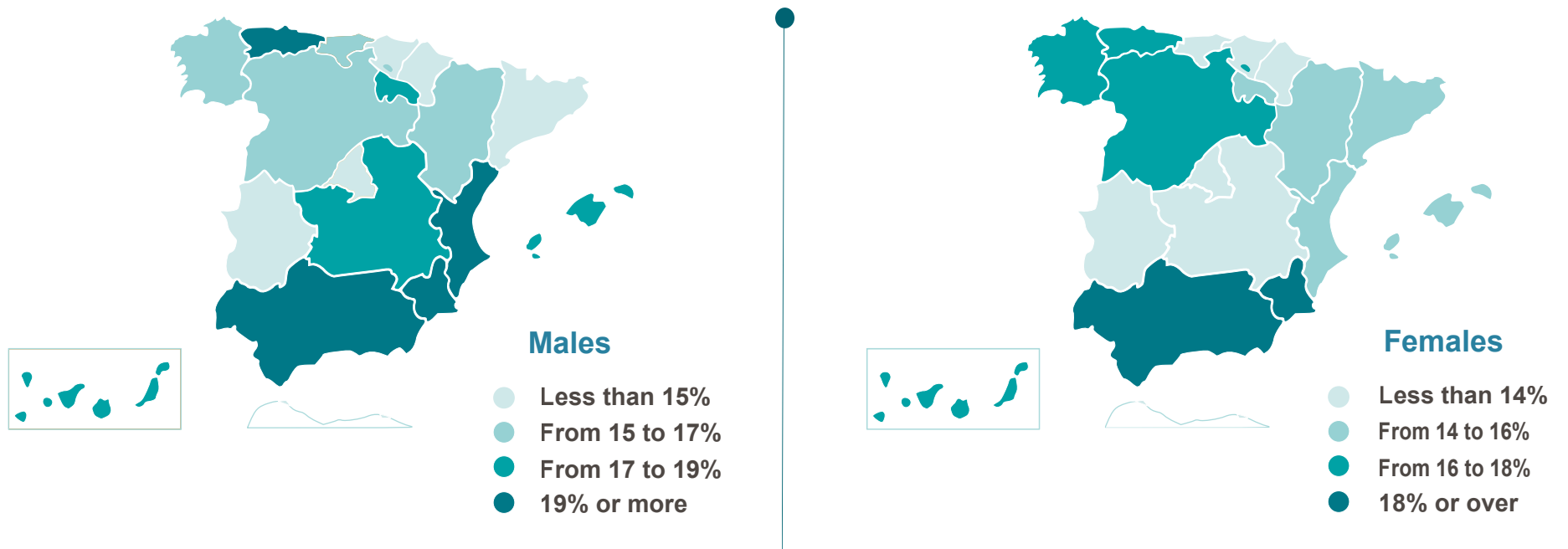
World obesity day - 4th of March

► % people with obesity

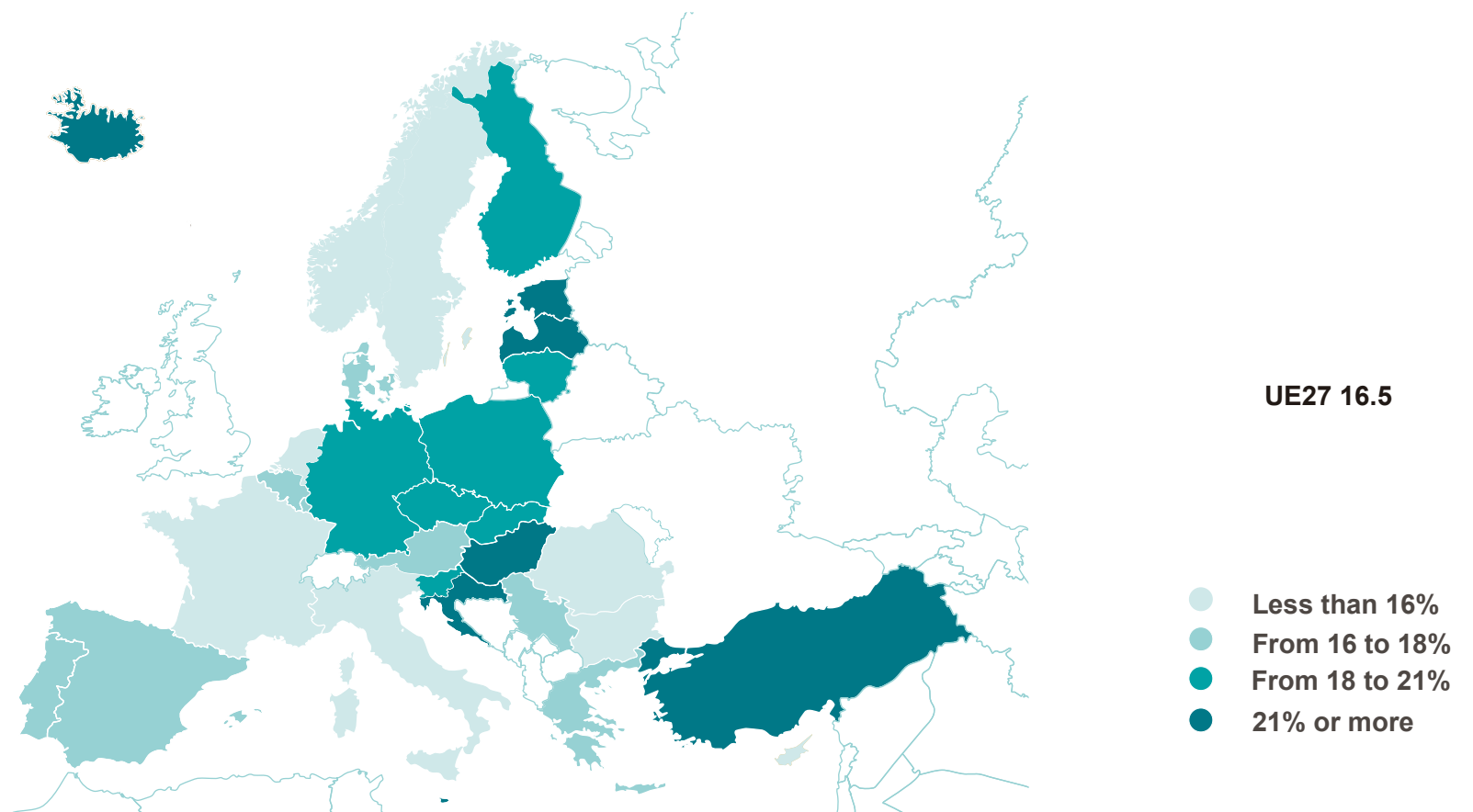


► % obese adult population (18 years old and over)

In Spain



In the EU



Note: [Body Mass Index (BMI) = [weight (Kg) / height (m)²].
A person is obese if their BMI ≥ 30

Sources: European Health Survey in Spain 2020.
(EHIS 2020 Eurostat)

March
2024