

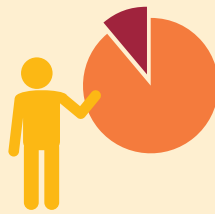
	Population as of January 1, 2022					Demographic indicators 2021		
	Total	Women (%)	Foreigners (%)	Area ¹ (km ²)	Population density (inhab./km ²)	Birth rate (‰)	Mortality rate (‰)	Average number of children per woman
Spain	47,432,893	51.0	11.4	506,010	93.7	7.12	9.49	1.19
Andalucía	8,519,107	50.7	8.8	87,596	97.3	7.72	9.33	1.27
Almería	724,031	49.4	20.3	8,773	82.5	9.56	8.61	1.55
Cádiz	1,259,432	50.4	4.9	7,439	169.3	7.08	9.30	1.18
Córdoba	777,677	51.0	3.4	13,772	56.5	7.44	10.72	1.27
Granada	929,955	50.5	8.0	12,645	73.5	7.63	9.44	1.26
Huelva	532,940	50.7	10.4	10,127	52.6	7.95	9.32	1.28
Jaén	622,673	50.4	2.7	13,493	46.1	7.21	11.11	1.23
Málaga	1,711,829	50.9	16.7	7,308	234.2	7.40	8.66	1.20
Seville	1,960,568	51.1	4.3	14,036	139.7	7.99	9.03	1.30
Aragón	1,314,159	50.7	11.8	47,720	27.5	7.21	11.06	1.29
Huesca	222,236	49.3	12.9	15,637	14.2	7.09	11.37	1.33
Teruel	133,090	49.3	11.4	14,810	9.0	6.90	12.75	1.30
Zaragoza	958,834	51.2	11.6	17,276	55.5	7.28	10.75	1.28
Asturias, Principado de	1,006,234	52.2	4.8	10,606	94.9	4.74	13.25	0.95
Balears, Illes	1,223,980	50.1	22.5	4,992	245.2	7.81	7.22	1.13
Canarias	2,252,237	50.5	16.5	7,445	302.5	5.67	7.63	0.86
Las Palmas	1,153,559	50.4	14.8	4,070	283.5	5.97	7.46	0.90
Santa Cruz de Tenerife	1,098,677	50.7	18.2	3,376	325.4	5.36	7.82	0.82
Cantabria	584,368	51.3	6.4	5,330	109.6	5.63	10.37	1.04
Castilla y León	2,376,687	50.7	6.6	94,229	25.2	5.50	12.31	1.08
Ávila	159,037	49.7	8.6	8,049	19.8	5.50	12.97	1.09
Burgos	352,991	49.8	8.2	14,289	24.7	5.93	11.22	1.16
León	452,187	51.4	5.5	15,578	29.0	5.08	13.72	1.00
Palencia	157,337	50.5	4.9	8,052	19.5	5.33	14.38	1.05
Salamanca	326,469	51.4	4.9	12,348	26.4	5.37	12.24	1.05
Segovia	153,820	49.7	12.5	6,923	22.2	6.29	10.92	1.20
Soria	89,145	49.1	11.3	10,307	8.6	5.99	13.30	1.16
Valladolid	517,798	51.3	5.6	8,111	63.8	5.84	10.30	1.13
Zamora	167,904	50.3	4.5	10,561	15.9	4.20	15.36	0.90
Castilla-La Mancha	2,049,980	49.8	9.8	79,460	25.8	7.10	9.97	1.22
Albacete	387,760	50.0	7.4	14,931	26.0	7.19	9.74	1.24
Ciudad Real	489,913	50.4	6.4	19,812	24.7	7.12	11.06	1.23
Cuenca	198,797	49.4	13.9	17,139	11.6	6.53	12.26	1.17
Guadalajara	266,401	49.2	14.6	12,213	21.8	7.09	8.00	1.20
Toledo	707,110	49.6	10.5	15,370	46.0	7.20	9.44	1.24
Cataluña	7,679,192	51.1	14.6	32,109	239.2	7.52	9.05	1.23
Barcelona	5,641,569	51.5	13.4	7,735	729.4	7.50	8.94	1.20
Girona	776,931	50.2	19.3	5,908	131.5	7.85	8.89	1.33
Lleida	437,113	49.2	18.7	12,163	35.9	7.38	10.44	1.33
Tarragona	823,579	50.2	16.4	6,306	130.6	7.46	9.23	1.30
Comunitat Valenciana	5,072,550	50.8	15.0	23,262	218.1	7.06	9.83	1.22
Alicante/Alacant	1,904,315	50.5	20.8	5,818	327.3	7.05	9.69	1.22
Castellón/Castelló	578,633	50.4	14.0	6,635	87.2	7.05	10.30	1.26
Valencia/València	2,589,603	51.1	11.0	10,812	239.5	7.08	9.82	1.21
Extremadura	1,053,317	50.4	3.5	41,635	25.3	6.87	11.68	1.19
Badajoz	666,955	50.6	3.2	21,769	30.6	7.26	11.13	1.21
Cáceres	386,362	50.1	4.0	19,865	19.4	6.21	12.63	1.15
Galicia	2,691,456	51.7	4.7	29,576	91.0	5.50	12.21	1.01
A Coruña	1,120,121	52.0	4.4	7,950	140.9	5.64	11.86	1.03
Lugo	324,400	51.4	5.7	9,858	32.9	4.99	15.44	0.98
Ourense	304,041	51.8	5.8	7,275	41.8	4.60	15.45	0.93
Pontevedra	942,894	51.5	4.4	4,497	209.7	5.78	10.46	1.03
Community of Madrid	6,769,373	52.1	13.0	8,027	843.3	7.62	7.40	1.16
Murcia, Región de	1,522,516	49.9	14.3	11,316	134.5	9.11	8.36	1.48
Navarra, Comunidad Foral de	659,155	50.6	10.3	10,391	63.4	7.78	8.79	1.38
País Vasco	2,176,918	51.6	6.5	7,233	301.0	6.56	10.60	1.24
Araba/Álava	329,798	51.1	8.0	3,038	108.6	7.20	9.03	1.31
Bizkaia	1,133,681	51.9	6.0	2,216	511.7	6.14	11.01	1.16
Gipuzkoa	713,439	51.4	6.8	1,980	360.3	6.91	10.68	1.33
Rioja, La	315,916	50.8	12.5	5,046	62.6	6.94	10.80	1.24
Ceuta	82,513	49.6	4.5	20	4,152.6	8.68	8.14	1.32
Melilla	83,236	50.0	9.3	14	5,844.1	11.17	6.76	1.68

¹The area of Spain is calculated by adding the area of Autonomous Communities and Cities. Source: National Geographic Institute.

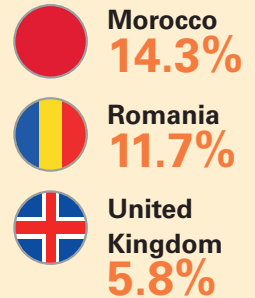
num- dren in	CPI 2022/ 2021	GDP per capita 2020 (euros)	Number of enterprises 2022	Employment and unemployment. 2022			
				Employed (thousands)	Activity rate (%)	Unemployment rate (%)	
	8.4	23,608	3,430,663	20,390.6	58.7	12.9	Spain
	8.7	17,545	545,502	3,259.5	56.6	19.0	Andalucía
	8.1	20,342	45,281	303.3	61.3	16.9	Almería
	8.4	16,020	65,560	435.3	54.1	23.5	Cádiz
	9.0	16,691	48,946	291.1	55.2	19.3	Córdoba
	8.6	17,108	62,568	354.1	57.5	20.8	Granada
	9.2	18,100	26,357	201.5	54.9	17.4	Huelva
	9.0	16,960	35,363	223.8	52.3	18.6	Jaén
	8.8	16,752	136,170	670.0	57.0	18.3	Málaga
	8.6	18,763	125,257	780.5	58.2	17.4	Seville
	9.0	26,642	89,376	584.7	58.8	9.4	Aragón
	9.7	28,712	16,388	98.2	57.8	9.2	Huesca
	9.6	23,466	9,138	58.1	57.0	8.9	Teruel
	8.7	26,607	63,850	428.5	59.3	9.5	Zaragoza
	8.4	20,947	68,068	383.8	49.8	12.6	Asturias, Principado de
	8.1	21,551	101,236	592.4	64.1	11.0	Balears, Illes
	7.5	17,199	151,846	952.2	59.1	17.6	Canarias
	7.7	16,892	77,896	502.2	60.8	17.4	Las Palmas
	7.3	17,525	73,950	450.1	57.4	17.8	Santa Cruz de Tenerife
	8.3	22,048	38,960	248.4	54.8	9.4	Cantabria
	9.5	22,925	157,730	1,007.6	55.0	9.8	Castilla y León
	10.3	19,548	10,099	63.8	54.3	13.8	Ávila
	8.8	27,016	25,391	160.0	58.9	8.3	Burgos
	10.8	20,457	30,067	183.6	52.2	10.2	León
	8.9	25,235	9,613	67.1	55.6	9.1	Palencia
	8.5	20,193	21,952	136.9	54.9	11.0	Salamanca
	9.3	20,948	10,850	69.9	58.7	8.4	Segovia
	9.2	25,344	5,690	41.5	59.5	7.8	Soria
	9.3	25,783	32,948	219.5	54.4	8.6	Valladolid
	9.5	19,059	11,120	65.5	50.8	12.4	Zamora
	10.1	19,257	129,626	867.1	59.2	14.3	Castilla-La Mancha
	9.4	20,084	26,473	165.8	58.2	12.7	Albacete
	10.1	20,231	30,574	186.4	55.8	18.9	Ciudad Real
	10.1	21,027	13,563	86.0	56.1	9.5	Cuenca
	9.9	19,263	13,785	122.9	62.9	11.1	Guadalajara
	10.7	17,609	45,231	306.0	61.7	14.7	Toledo
	8.0	27,745	634,223	3,514.3	60.9	9.7	Cataluña
	7.6	28,360	480,301	2,602.3	61.4	9.7	Barcelona
	9.0	25,556	65,628	367.6	62.5	8.6	Girona
	9.5	26,429	33,407	196.6	59.8	9.3	Lleida
	8.7	26,267	54,887	347.8	56.9	11.0	Tarragona
	8.5	20,780	374,917	2,183.4	58.7	13.2	Comunitat Valenciana
	8.7	17,999	147,286	806.8	58.3	14.4	Alicante/Alacant
	9.5	24,751	41,269	244.0	56.8	11.9	Castellón/Castelló
	8.1	21,935	186,362	1,132.6	59.3	12.5	Valencia/València
	8.9	17,834	67,254	409.8	55.6	17.3	Extremadura
	9.2	17,416	41,845	263.0	56.8	17.6	Badajoz
	8.5	18,553	25,409	146.8	53.6	16.8	Cáceres
	9.0	21,730	196,530	1,103.7	53.0	11.0	Galicia
	8.5	22,470	81,161	468.7	53.6	10.1	A Coruña
	9.3	20,976	24,109	135.1	51.8	8.8	Lugo
	9.4	21,003	22,373	115.6	48.6	11.4	Ourense
	9.5	21,345	68,887	384.4	54.0	12.7	Pontevedra
	7.5	32,332	558,607	3,190.1	63.5	11.2	Madrid, Comunidad de
	8.8	19,692	97,014	650.1	59.7	13.3	Murcia, Región de
	8.8	28,822	45,738	291.7	59.0	9.6	Navarra, Comunidad Foral de
	8.0	30,338	142,904	949.3	56.5	8.6	País Vasco
	8.1	35,542	18,771	145.3	58.2	8.8	Araba/Álava
	8.3	28,793	75,416	498.4	57.0	9.3	Bizkaia
	7.7	30,405	48,717	305.6	54.8	7.3	Gipuzkoa
	8.9	25,666	22,532	143.4	59.8	9.5	Rioja, La
	7.7	19,797	3,744	29.0	62.0	28.3	Ceuta
	8.6	18,056	4,856	30.1	61.6	21.5	Melilla

Some data of interest

47.4
Million
inhabitants



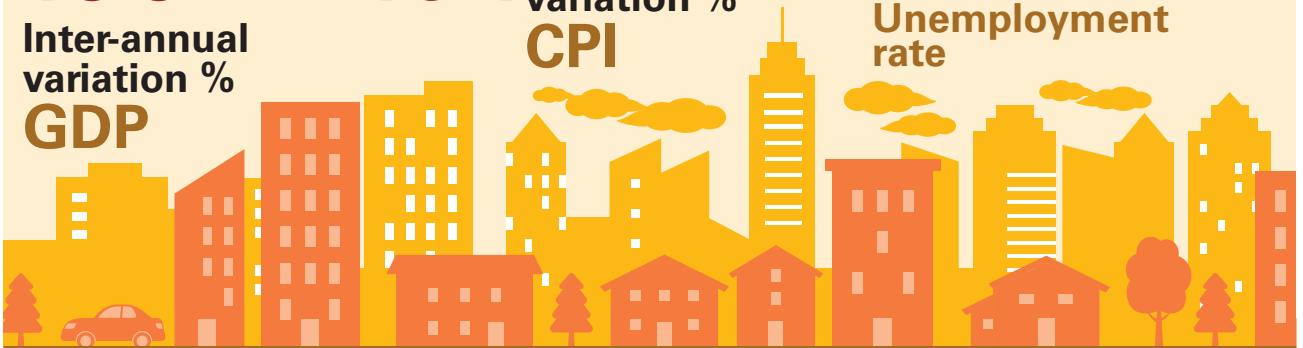
11.4%
Foreign population



+5.5
Inter-annual
variation %
GDP

+8.4 Inter-annual
variation %
CPI

12.9%
Unemployment
rate



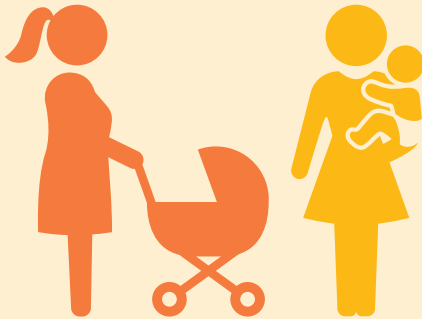
3.4
Million
companies

2.1
Million are from the
services sector



32.6

years **Average age at maternity**



Life expectancy at birth

85.8
years

80.3
years



Lucía

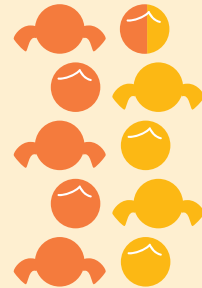


Martín

Most common newborn names

49.25%

Births to unmarried women



30,552€

Average income per household

29,244€

Average expenditure per household

55.3%

Buy online

(in the last 3 months)

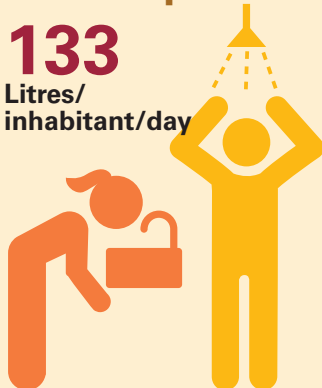


People aged 16 to 74

Water consumption

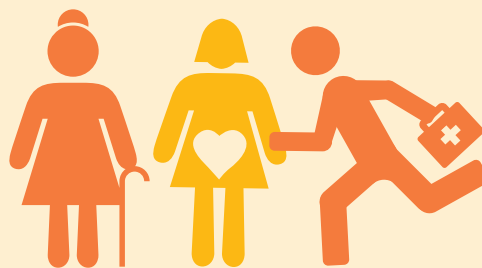
133

Litres/inhabitant/day



3 out of 4

Perceive their health as good or very good



Main causes of death



Circulatory system

26.4%



Tumours

25.2%



Infectious and parasitic diseases

10.2%

Provincial delegations

ALBACETE Padre Romano, 61 - 02005 967 19 19 30 - Fax: 967 21 66 49	CÓRDOBA Antonio Gaudi, 4 - 14005 957 49 85 02 - Fax: 957 48 56 13	LEÓN Avda. Reyes Leoneses, 14 - 24008 987 87 63 12 - Fax: 987 27 94 25	PONTEVEDRA Iglesias Vilarelle, 2 - 36001 986 86 85 00 - Fax: 986 84 44 53	
ALICANTE/ALACANT México, 20 - 03008 965 13 59 00 - Fax: 965 92 03 15	A CORUÑA Adelaida Muro, 12 - 15002 981 21 74 26 - Fax: 981 20 61 50	LLEIDA Bonaire, 47 - 49 - 25004 973 23 82 24 - Fax: 973 23 64 89	LA RIOJA Parque San Miguel, 11-12 - Bajo - 26007 Logroño, 941 20 74 20 - Fax: 941 20 74 86	
ALMERÍA Fresador, 12 - 04009 950 28 17 39 - Fax: 950 27 68 20	CUENCA Ramón y Cajal, 37 - 16004 969 24 09 97 - Fax: 969 23 05 22	LUGO Av. Doutor García Portela, 19, 27002 982 28 46 00 - Fax: 982 24 68 72	SALAMANCA Paseo Doctor Torres Villarroel, 72 - 37005 923 12 52 80 - Fax: 923 26 13 82	
ARABA/ÁLAVA Portal de Castilla, 9 y 11 - 01007 Vitoria 945 15 47 30 - Fax: 945 14 31 64	GIPUZKOA José María Soroa, 23 - San Sebastián 943 29 36 66 - Fax: 943 29 26 30	MADRID Trafalgar, 29 - 28010 91 583 90 15 - Fax: 91 583 90 43	SANTA CRUZ DE TENERIFE Prolongación Ramón y Cajal, 3 - 38003 922 53 17 50 - Fax: 922 29 25 51	
ASTURIAS General Elorza, 17 - Bajo - 33001 Oviedo 985 20 78 56 - Fax: 985 21 48 15			SEGOVIA Plaza de los Médicos, 3 - 40005 921 41 24 34 - Fax: 921 44 26 37	
ÁVILA Intendente Aizpuru, 4 - 05001 967 19 19 30 - Fax: 967 21 66 49			SEVILLE Avenida Palmera, 19C - 41013 954 46 72 10 - Fax: 954 46 78 58	
BADAJOS Avda. de Europa, 1-3º - 06004 924 22 96 96 - Fax: 924 24 84 45			SORIA Mosquera de Barnuevo, 10 - 42004 975 23 37 73 - Fax: 975 22 97 39	
BALEARS, ILLES Miguel Capllonch, 12 - Palma M. 971 77 49 94 - Fax: 971 46 77 48			TARRAGONA Pare Agustí Altisent, 1 (esq. C/ Jaumel, 22) - 43005 - 977 24 80 85 - Fax: 977 22 76 09	
BARCELONA Vía Laietana, 8 - 08003 932 95 97 95 - Fax: 933 10 19 23			TERUEL Agustina de Aragón, 14 - 44002 978 61 94 00 - Fax: 978 60 58 41	
BIZKAIA Plaza del Mercado, 3 - 48009 Bilbao 944 10 61 00 - Fax: 944 21 97 04			TOLEDO San Lucas, 2 - 45001 925 25 00 70 - Fax: 925 22 31 88	
BURGOS Avda. del Arlanzón, 27 - 09004 947 25 68 90 - Fax: 947 27 65 07			MÁLAGA Puerta del Mar, 18 - 29005 952 22 24 00 - Fax: 952 60 02 16	VALENCIA/VALÈNCIA Camino Nuevo de Picanya, 27 - 46014 963 16 62 00 - Fax: 963 91 95 92
CÁCERES Avda. Ruta de la Plata, 12 - Bajo - 10001 927 22 00 68 - Fax: 927 21 44 84			MURCIA Alfonso X El Sabio, 6 - Planta 2 - 30008 96 827 20 10 - Fax: 968 23 61 69	VALLADOLID Juan II de Castilla, 2 - 47009 983 36 26 63 - Fax: 983 37 16 44
CÁDIZ Edificio Glorieta; Glorieta Zona Franca s/n - 11011-956 29 34 37 - Fax: 956 27 96 08			NAVARRRE Yanguas y Miranda, 31 - 6º Planta - 31003 Pamplona - 948 36 67 24 - Fax: 948 17 40 76	ZAMORA Plaza del Mercado, 24 - 49003 980 50 82 90 - Fax: 980 53 23 37
CANTABRIA Concepción Arenal, 10 - 39008 Santander 942 36 75 00 - Fax: 942 36 24 90			OURENSE Rúa Dalí, 13-15 - Bajo - 32002 988 21 18 69 - Fax: 988 21 09 89	ZARAGOZA Albareda, 18 - Plantas 3 y 4 - 50004 976 59 02 97 - Fax: 976 59 87 54
CASTELLÓN/CASTELLÓ Cronista Revest, 11 - 12005 964 72 27 93 - Fax: 964 22 91 17	HUESCA Coso Alto, 14 - Planta 2º - 22002 974 21 53 45 - Fax: 974 21 18 75	CEUTA Jáudenes, 10 - 51001 856 20 02 16 - Fax: 956 51 87 77		
CIUDAD REAL Ronda de la Mata, 8 - 13004 926 27 17 60 - Fax: 926 25 56 09	JAÉN Plaza de Jaén por la Paz, 2-7º - 23008 953 29 69 46 - Fax: 953 22 72 06	MELILLA Plaza del Mar, s/n - Edificio V Centenario Torre Sur - 6º Planta - 52004 952 69 04 00 - Fax: 952 67 22 88		

Addresses and contact numbers

INE. Avda. de Manoteras, 50-52 - 28050 Madrid

User support

Tel.: 91 583 91 00

Consultation: www.ine.es/infoine

Índice. INE Library

E-mail: indice@ine.es

Library

E-mail: biblioteca@ine.es

