

Passenger Transport Statistics (PT)

January 2015. *Provisional data*

The number of passengers using public transport decreases by 2.3% in January, as compared with the same month of the previous year

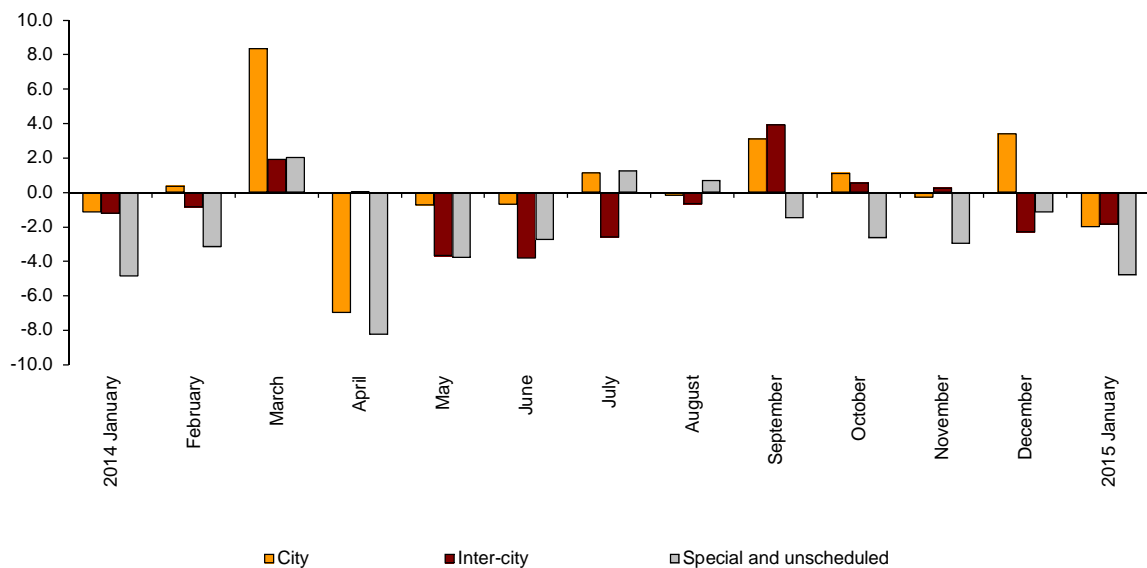
City transport decreases by 2.0% in the annual rate and inter-city transport decreases by 1.9%

Passengers transport evolution

More than 363.2 million passengers used public transport in January, 2.3% less than in the same month of 2014.

City transport decreased by 2.0% and inter-city transport decreased by 1.9% in the annual rate. Within the last one, bus transport was the one that recorded the greatest decrease, with a -2.5% rate.

Annual evolution of passengers transport
Type of transport



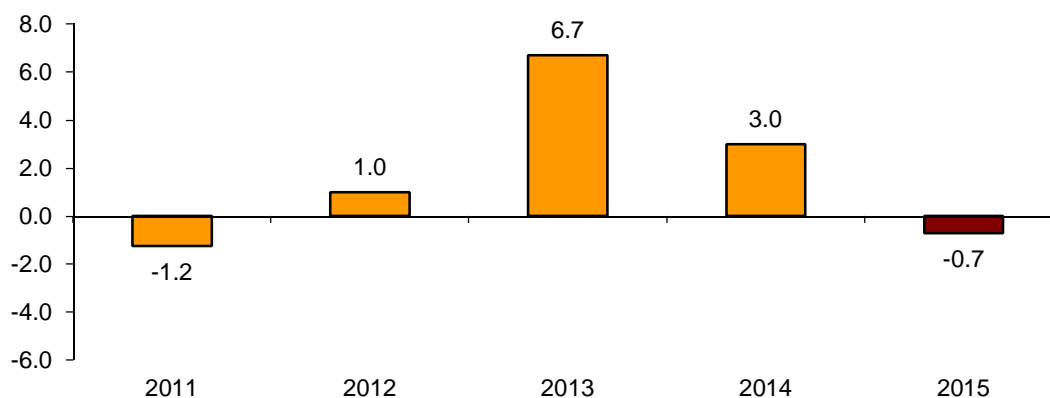
Passengers transport annual evolution, by type of transport

	City	Inter-city	Special and unschedule
2014 January	-1.1	-1.3	-4.9
February	0.4	-0.9	-3.2
March	8.4	1.9	2.0
April	-7.0	0.0	-8.3
May	-0.8	-3.7	-3.8
June	-0.7	-3.8	-2.7
July	1.1	-2.6	1.3
August	-0.2	-0.7	0.7
September	3.1	3.9	-1.5
October	1.1	0.6	-2.7
November	-0.3	0.3	-3.0
December	3.4	-2.3	-1.1
2015 January	-2.0	-1.9	-4.8

Monthly rate evolution

The variation rate for the number of passengers on public transport in January 2015, as compared with December, was -0.7% . In order to contribute to the analysis and interpretation of data, the evolution of the monthly rate of public transport passengers in the last years has been included in this rubric.

**Evolution of the monthly rate
(month-on-month variation for January as compared with December)**



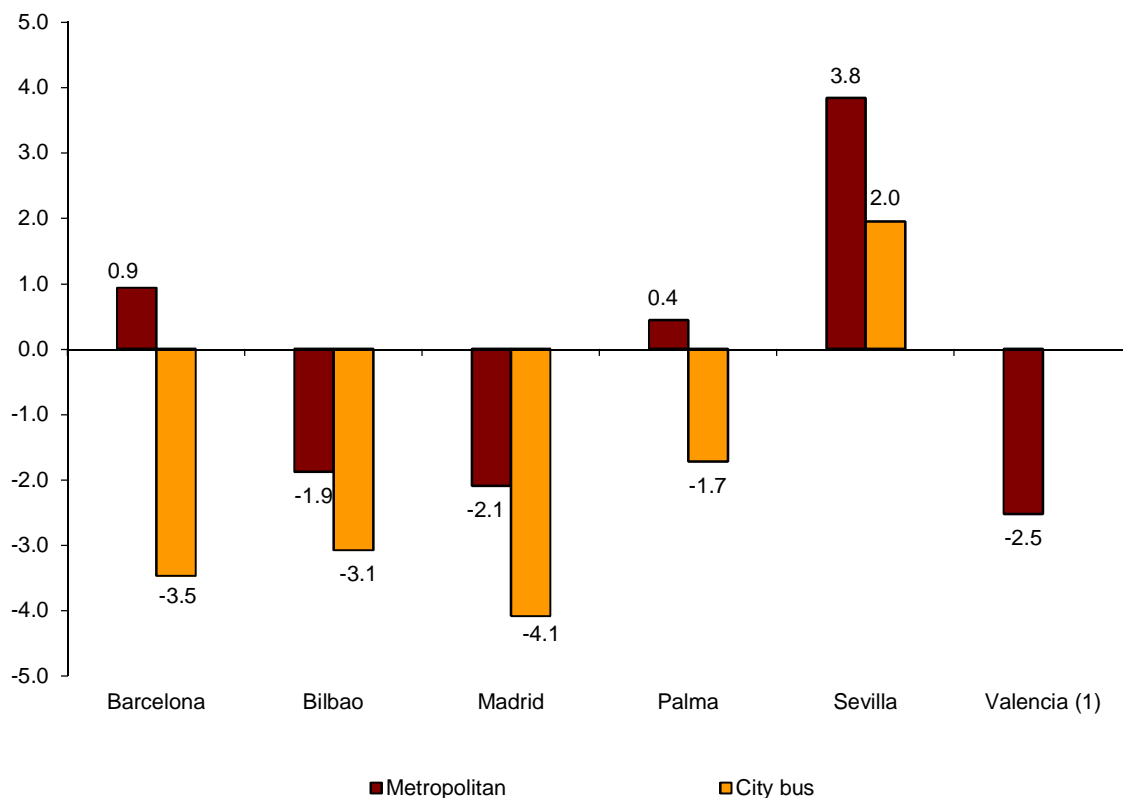
City transport

City transport was used by more than 225.7 million passengers in January, 2.0% more than in the same month of 2014.

Metropolitan transport registered a decrease of 1.0% and bus transport did so by 2.7%.

Bus transport decreased in all cities except for Sevilla (2.0%). In turn, metropolitan transport registered the greatest decrease in Valencia (-2.5%) and the greatest increase in Sevilla (3.8%).

Annual rate of city transport passengers in cities with a Metropolitan

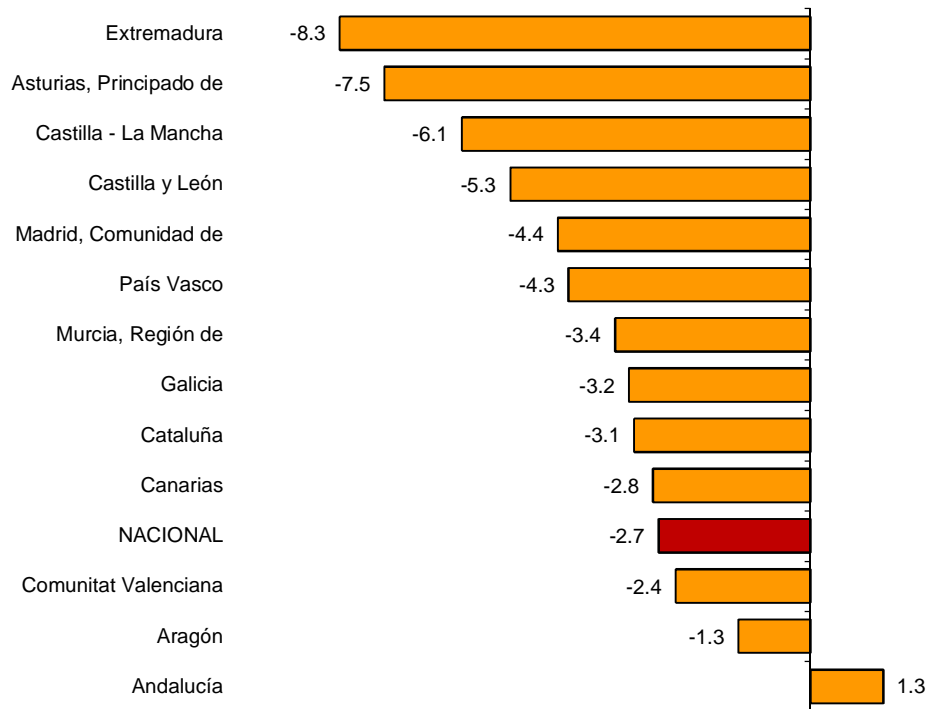


⁽¹⁾ The publication of the city transport by bus in Valencia is not allowed

The number of passengers of bus transport decreased in all Autonomous Communities, except for Andalucía (1.3%).

Extremadura (-8.3%), Principado de Asturias (-7.5%) and Castilla-La Mancha (-6.1%) were those that registered the greatest decreases.

Annual rates of the number of passengers City transport by bus



⁽¹⁾ In order to protect statistical secrecy, the passengers of the Autonomous Communities of Illes Balears, Cantabria, Comunidad Foral de Navarra and La Rioja and of the Autonomous Cities of Ceuta and Melilla have been grouped

Inter-city transport

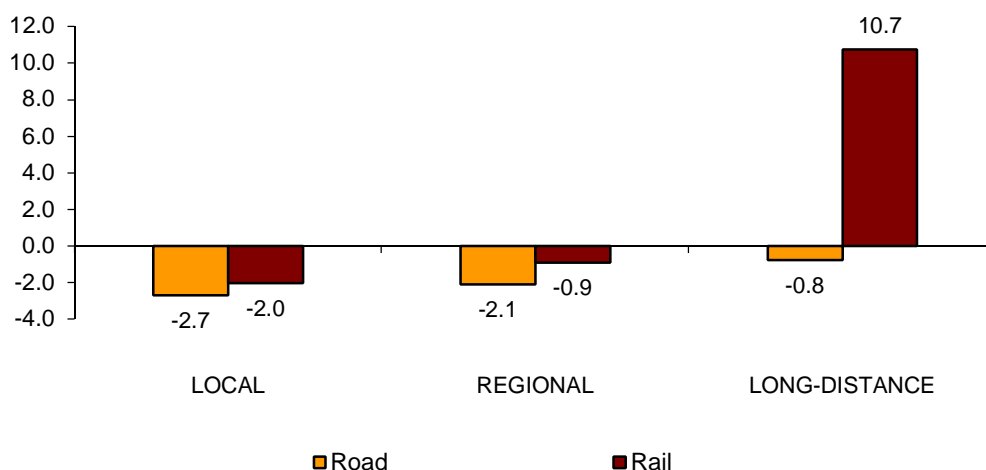
More than 99.2 million passengers used inter-city transport in January, indicating a 1.9% decrease as compared with the same month of 2014.

Both bus transport (-2.5%) and rail transport (-1.4%) decreased, while air transport (2.8%) increased.

Local distance passengers dropped by 2.7% for bus transport and 2.0% for rail transport. Regional distance passengers decreased 2.1% for bus transport and 0.9% for rail transport.

Finally, long distance passengers decreased 0.8% for bus transport and increased 10.7% for rail transport.

**Annual rate of the number of passengers
Inter-city transport by type of transport and distance**



Special and unscheduled transport

More than 38.2 million passengers used special and unscheduled transport in January, indicating a decrease of 4.8% in the annual rate.

The number of special transport passengers decreased 5.9%, reaching more than 29.6 million users. Within this, school transport decreased 6.3%, and work transport did so by 4.6%.

In turn, unscheduled transport decreased 0.8%, as compared with the same month of the previous year, reaching more than 8.5 million passengers.

Passenger Transport Statistics

January 2015

Provisional data

1. Passenger transport

	Passengers transported (thousands)	% variation	
		Annual	Year-to-date average
BY TYPE OF TRANSPORT	363,263	-2.3	-2.3
City transport	225,737	-2.0	-2.0
Inter-city transport	99,249	-1.9	-1.9
Special and unscheduled transport	38,277	-4.8	-4.8

2. City transport

	Passengers transported (thousands)	% variation	
		Annual	Year-to-date average
CITY TRANSPORT	225,737	-2.0	-2.0
Metropolitan	92,120	-1.0	-1.0
Bus ⁽¹⁾	133,617	-2.7	-2.7

⁽¹⁾ This includes trams and funiculars

2.1 City transport in cities with a Metropolitan

		Passengers transported (thousands)	% variation	
			Annual	Year-to-date average
Barcelona	City bus	15,358	-3.5	-3.5
	Metropolitan	30,788	0.9	0.9
Bilbao	City bus	3,179	-3.1	-3.1
	Metropolitan	7,575	-1.9	-1.9
Madrid	City bus	33,526	-4.1	-4.1
	Metropolitan	47,600	-2.1	-2.1
Palma	City bus	2,662	-1.7	-1.7
	Metropolitan	132	0.4	0.4
Sevilla	City bus	6,723	2.0	2.0
	Metropolitan	1,240	3.8	3.8
Valencia	City bus	(1)	(1)	(1)
	Metropolitan	4,785	-2.5	-2.5

(1) Publication thereof is not allowed

2.2 Urban transport by bus by Autonomous City and Communiy

	Passengers transported (thousands)	% variation	
		Annual	Year-to-date average
NATIONAL	133,617	-2.7	-2.7
Andalucía	18,230	1.3	1.3
Aragón	9,934	-1.3	-1.3
Asturias, Principado de	2,639	-7.5	-7.5
Balears, Illes	(1)	(1)	(1)
Canarias	4,447	-2.8	-2.8
Cantabria	(1)	(1)	(1)
Castilla y León	5,413	-5.3	-5.3
Castilla - La Mancha	1,494	-6.1	-6.1
Cataluña	21,249	-3.1	-3.1
Comunitat Valenciana	10,030	-2.4	-2.4
Extremadura	799	-8.3	-8.3
Galicia	4,838	-3.2	-3.2
Madrid, Comunidad de	37,519	-4.4	-4.4
Murcia, Región de	1,460	-3.4	-3.4
Navarra, Comunidad Foral de	(1)	(1)	(1)
País Vasco	7,041	-4.3	-4.3
Rioja, La	(1)	(1)	(1)
Ceuta	(1)	(1)	(1)
Melilla	(1)	(1)	(1)

3. Inter-city transport

	Passengers transported (thousands)	% variation	
		Annual	Year-to-date average
INTER-CITY TRANSPORT	99,249	-1.9	-1.9
Road	50,864	-2.5	-2.5
Local	34,749	-2.7	-2.7
Regional	15,005	-2.1	-2.1
Long-distance	1,110	-0.8	-0.8
Rail ⁽¹⁾	45,958	-1.4	-1.4
Local rail	41,685	-2.0	-2.0
Regional rail	2,153	-0.9	-0.9
Long-distance rail	2,121	10.7	10.7
Air (domestic)	1,918	2.8	2.8
Sea (cabotage) ⁽²⁾	510	1.6	1.6

⁽¹⁾ Local and regional rail include all rail operators and Long-distance rail only includes RENFE

⁽²⁾ Estimated data

4. Special and unscheduled transport

	Passengers transported (thousands)	% variation	
		Annual	Year-to-date average
SPECIAL AND UNSCHEDULED TRANSPORT	38,277	-4.8	-4.8
Special	29,690	-5.9	-5.9
School	22,291	-6.3	-6.3
Work	7,399	-4.6	-4.6
Unscheduled	8,587	-0.8	-0.8

For further information see INEbase - www.ine.es/en/ All press releases at: www.ine.es/prensa/prensa_en.htm

Press Office: Telephone numbers: 91 583 93 63 / 94 08 – Fax: 91 583 90 87 - gprensa@ine.es

Information Area: Telephone number: 91 583 91 00 – Fax: 91 583 91 58 – www.ine.es/infoine