

Passenger Transport Statistics (PT)

January 2016. *Provisional data*

The number of passengers using public transport doesn't change in January, as compared with the same month of the previous year

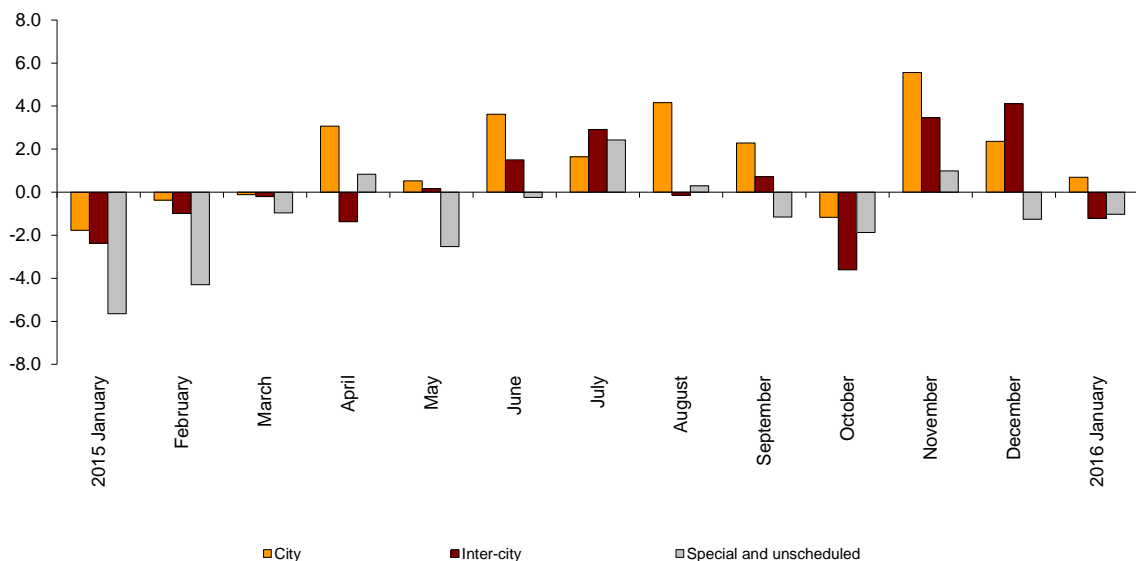
City transport increases by 0.7% in the annual rate and inter-city transport decreases by 1.2%

Passengers transport evolution

More than 362.7 million passengers used public transport in January, a similar number to that recorded in the same month of 2015.

City transport increased by 0.7% and inter-city transport decreased by 1.2% in the annual rate. Within the last one, rail transport was the one that recorded the greatest decrease, with a -3.8% rate.

Annual evolution of passengers transport
Type of transport



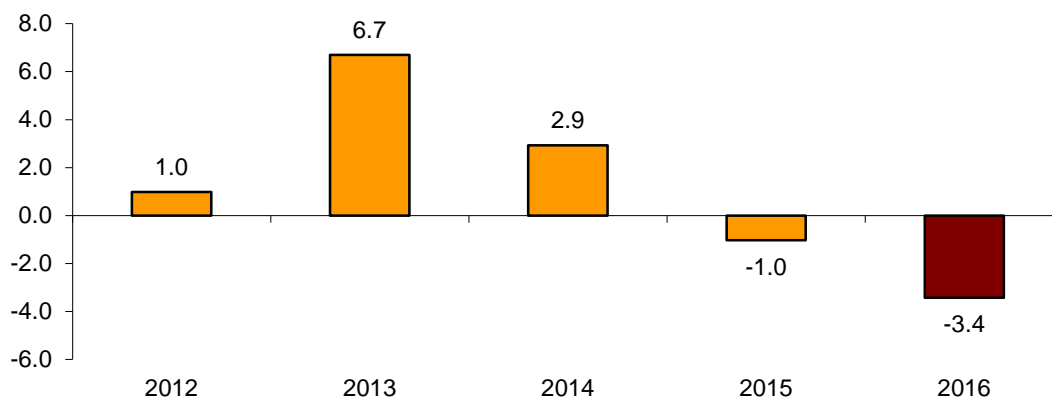
Passengers transport annual evolution, by type of transport

	City	Inter-city	Special and unschedule
2015 January	-1.8	-2.4	-5.7
February	-0.4	-1.0	-4.3
March	-0.1	-0.2	-1.0
April	3.1	-1.4	0.8
May	0.5	0.2	-2.5
June	3.6	1.5	-0.2
July	1.6	2.9	2.4
August	4.2	-0.1	0.3
September	2.3	0.7	-1.2
October	-1.2	-3.6	-1.9
November	5.6	3.5	1.0
December	2.4	4.1	-1.3
2016 January	0.7	-1.2	-1.0

Monthly rate evolution

The variation rate for the number of passengers on public transport in January 2016, as compared with December, was -3.4% . In order to contribute to the analysis and interpretation of data, the evolution of the monthly rate of public transport passengers in the last years is shown in the following chart.

**Evolution of the monthly rate
(month-on-month variation for January as compared with December)**



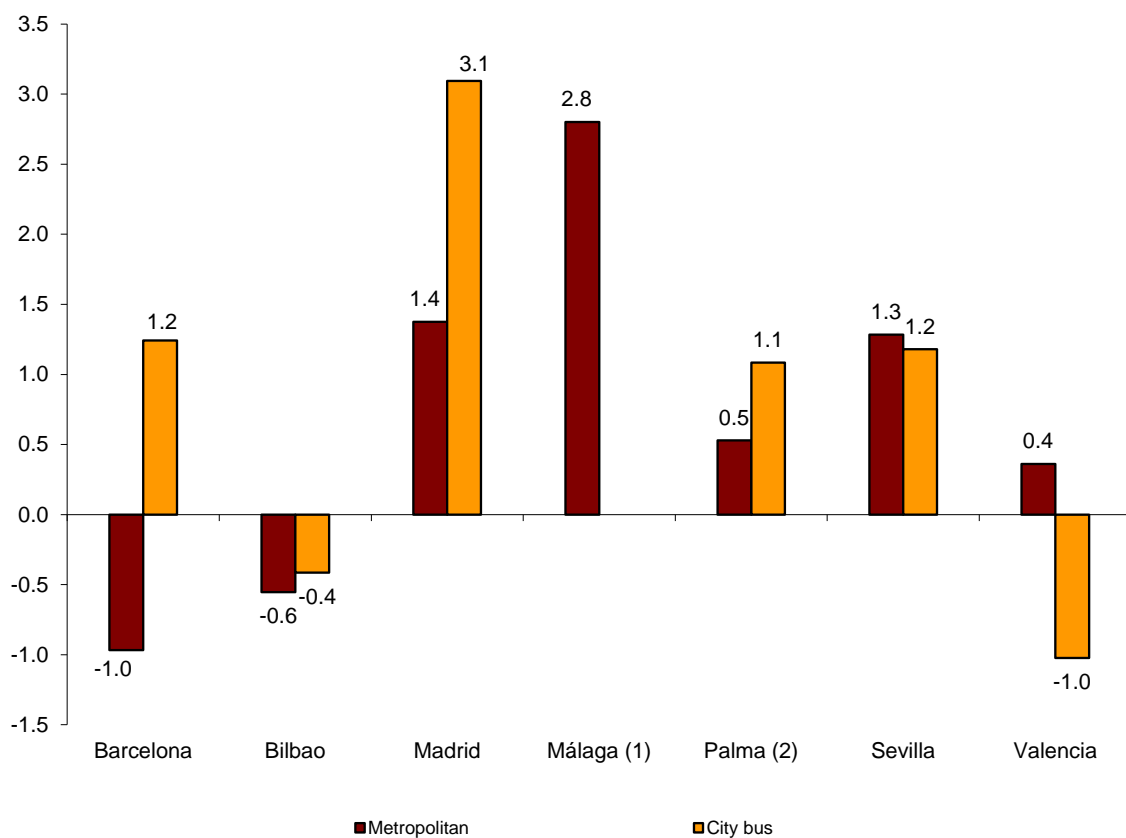
City transport

City transport was used by more than 227.6 million passengers in January, 0.7% more than in the same month of 2015.

Metropolitan transport registered an increase of 0.4% and bus transport increased by 0.9%.

Bus transport registered the greatest increase in Madrid (3.1%) and the greatest decrease in Valencia (-1.0%). In turn, metropolitan transport registered the greatest increase in Málaga (2.8%) and the greatest decrease in Barcelona (-1.0%).

Annual rate of city transport passengers in major cities with a Metropolitan



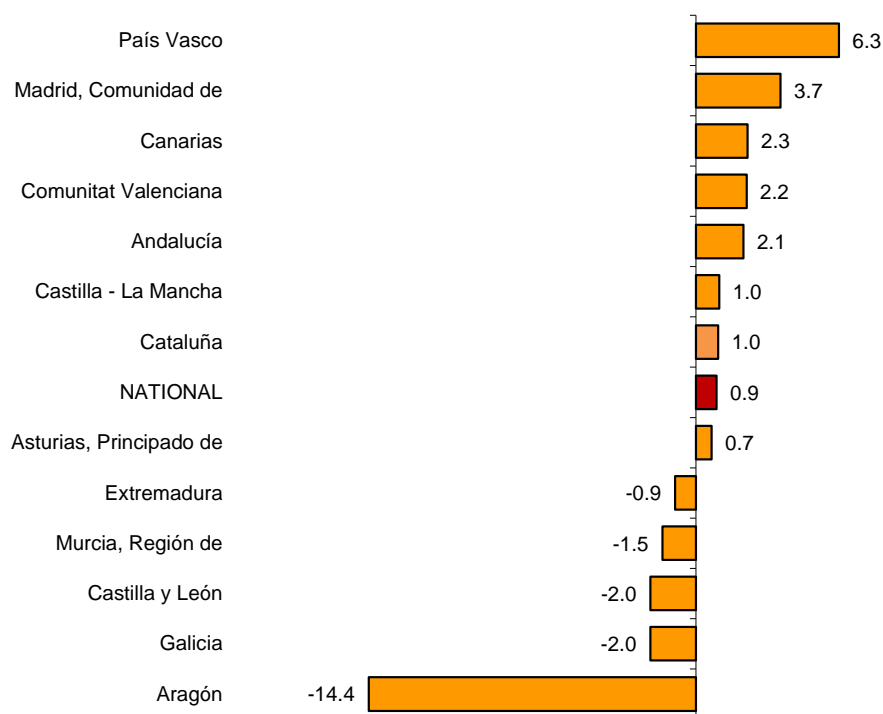
(1) The publication of the city transport by bus in Málaga is not allowed

(2) Estimated metropolitan transport data

The number of passengers of bus transport registered the greatest increases in País Vasco (6.3%), Comunidad de Madrid (3.7%) and Canarias (2.3%).

In turn, Aragón (-14.4%), Galicia (-2.0%) and Castilla y León (-2.0%) were those that registered the greatest decreases.

Annual rates of the number of passengers City transport by bus



⁽¹⁾ In order to protect statistical secrecy, data of the Autonomous Communities of Illes Balears, Cantabria, Comunidad Foral de Navarra and La Rioja and of the Autonomous Cities of Ceuta and Melilla are not published

Inter-city transport

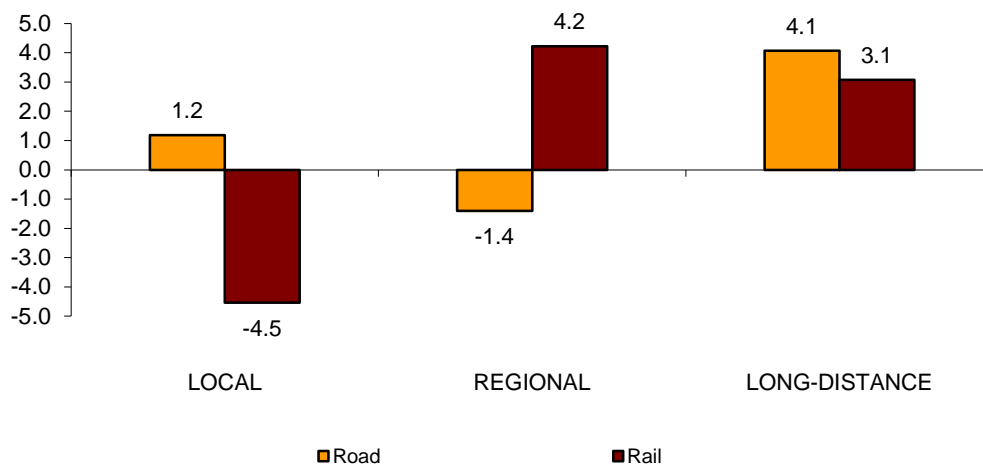
More than 97.5 million passengers used inter-city transport in January, indicating a 1.2% decrease as compared with the same month of 2015.

Bus transport increased 0.5% whereas rail transport decreased by 3.8%. In turn, air transport increased by 13.9% and sea transport increased by 5.8%.

Local distance passengers increased by 1.2% for bus transport and decreased by 4.5% for rail transport. Regional distance passengers decreased 1.4% for bus transport and increased 4.2% for rail transport.

Finally, long distance passengers increased 4.1% for bus transport and increased 3.1% for rail transport. Within the last one, AVE increased by 7.6%.

Annual rate of the number of passengers Inter-city transport by type of transport and distance



Special and unscheduled transport

More than 37.5 million passengers used special and unscheduled transport in January, indicating a decrease of 1.0% in the annual rate.

The number of special transport passengers decreased 2.6%, reaching more than 28.5 million users. Within this, school transport decreased 2.8%, and work transport did so by 2.0%.

In turn, unscheduled transport increased 4.2%, as compared with the same month of the previous year, reaching more than 8.9 million passengers.

Passenger Transport Statistics

January 2016

Provisional data

1. Passenger transport

	Passengers transported (thousands)	% variation	
		Annual	Year-to-date average
BY TYPE OF TRANSPORT	362,757	0.0	0.0
City transport	227,652	0.7	0.7
Inter-city transport	97,558	-1.2	-1.2
Special and unscheduled transport	37,547	-1.0	-1.0

2. City transport

	Passengers transported (thousands)	% variation	
		Annual	Year-to-date average
CITY TRANSPORT	227,652	0.7	0.7
Metropolitan	92,901	0.4	0.4
Bus ⁽¹⁾	134,751	0.9	0.9

⁽¹⁾ This includes trams and funiculars

2.1 City transport in main cities with a Metropolitan

		Passengers transported (thousands)	% variation	
			Annual	Year-to-date average
Barcelona	City bus	15,549	1.2	1.2
	Metropolitan	30,490	-1.0	-1.0
Bilbao	City bus	3,190	-0.4	-0.4
	Metropolitan	7,533	-0.6	-0.6
Madrid	City bus	34,563	3.1	3.1
	Metropolitan	48,254	1.4	1.4
Málaga	City bus	(1)	(1)	(1)
	Metropolitan	433	2.8	2.8
Palma	City bus	2,691	1.1	1.1
	Metropolitan ⁽²⁾	133	0.5	0.5
Sevilla	City bus	6,414	1.2	1.2
	Metropolitan	1,256	1.3	1.3
Valencia	City bus	7,222	-1	-1
	Metropolitan	4,802	0.4	0.4

(1) Publication thereof is not allowed

(2) Estimated data

2.2 Urban transport by bus by Autonomous City and Community

	Passengers transported (thousands)	% variation	
		Annual	Year-to-date average
NACIONAL	134,751	0.9	0.9
Andalucía	17,810	2.1	2.1
Aragón	8,487	-14.4	-14.4
Asturias, Principado de	2,659	0.7	0.7
Balears, Illes	(1)	(1)	(1)
Canarias	4,564	2.3	2.3
Cantabria	(1)	(1)	(1)
Castilla y León	5,295	-2.0	-2.0
Castilla - La Mancha	1,509	1.0	1.0
Cataluña	21,445	1.0	1.0
Comunitat Valenciana	10,976	2.2	2.2
Extremadura	791	-0.9	-0.9
Galicia	4,731	-2.0	-2.0
Madrid, Comunidad de	38,911	3.7	3.7
Murcia, Región de	1,438	-1.5	-1.5
Navarra, Comunidad Foral de	(1)	(1)	(1)
País Vasco	7,512	6.3	6.3
Rioja, La	(1)	(1)	(1)
Ceuta	(1)	(1)	(1)
Melilla	(1)	(1)	(1)

3. Inter-city transport

	Passengers transported (thousands)	% variation	
		Annual	Year-to-date average
INTER-CITY TRANSPORT	97,558	-1.2	-1.2
Road	50,622	0.5	0.5
Local	34,745	1.2	1.2
Regional	14,735	-1.4	-1.4
Long-distance	1,141	4.1	4.1
Rail ⁽¹⁾	44,221	-3.8	-3.8
Local rail	39,792	-4.5	-4.5
Regional rail	2,243	4.2	4.2
Long-distance rail	2,186	3.1	3.1
AVE	1,398	7.6	7.6
Other long-distance rail	789	-4.1	-4.1
Air (domestic)	2,177	13.9	13.9
Sea (cabotage)	538	5.8	5.8

⁽¹⁾ Local and regional rail include all rail operators and Long-distance rail only includes RENFE

4. Special and unscheduled transport

	Passengers transported (thousands)	% variation	
		Annual	Year-to-date average
SPECIAL AND UNSCHEDULED TRANSPORT	37,547	-1.0	-1.0
Special	28,584	-2.6	-2.6
School	21,432	-2.8	-2.8
Work	7,152	-2.0	-2.0
Unscheduled	8,962	4.2	4.2

For further information see INEbase - www.ine.es/en/ All press releases at: www.ine.es/prensa/prensa_en.htm

Press Office: Telephone numbers: 91 583 93 63 / 94 08 – Fax: 91 583 90 87 - gprensa@ine.es

Information Area: Telephone number: 91 583 91 00 – Fax: 91 583 91 58 – www.ine.es/infoine