

Passenger Transport Statistics (PT)
February 2013. *Provisional data*

The number of passengers using city transport decreases 5.4% in February, as compared with the same month of the previous year

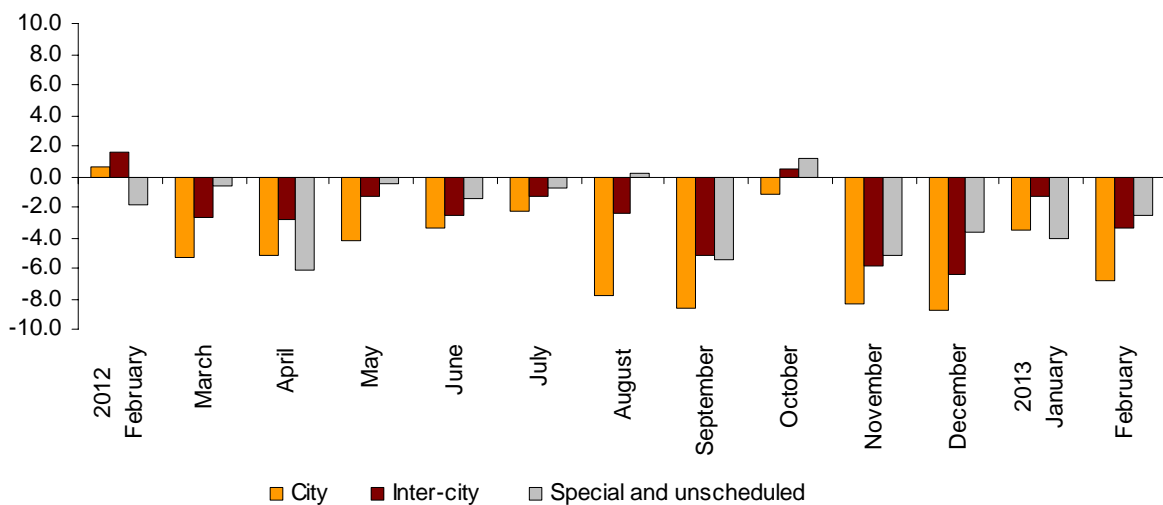
The city transport decreases 6.9% in the annual rate and the inter-city transport decreases 3.3%

Passengers transport evolution

More than 374.4 million passengers used public transport in February, 5.4% less than the same month of the previous year.

The city transport decreased 6.9% in the annual rate and the inter-city transport decreased 3.3%. Within this, the most significant drop was that of the air transport that fell 17.8%.

Passenger transport annual evolution
Type of transport



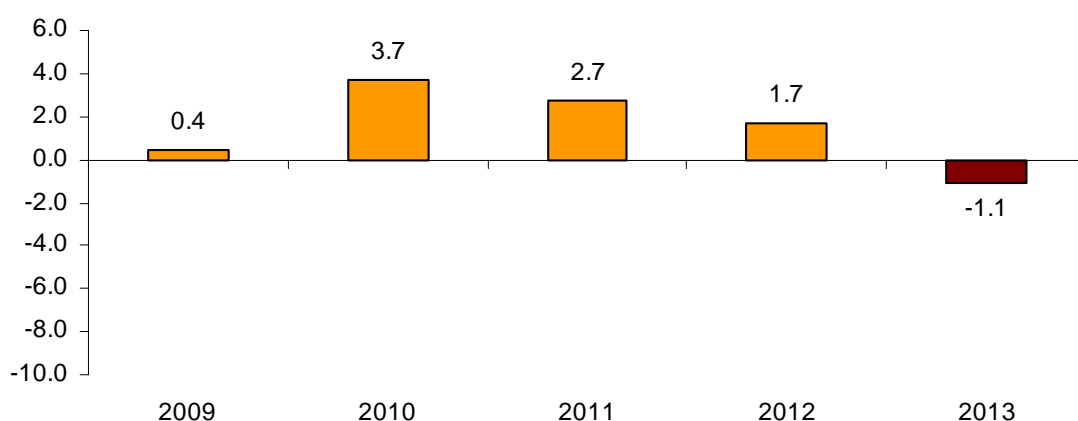
Passengers transport annual evolution by type of transport

	City	Inter-city	Special and unscheduled
2012 February	0.7	1.5	-1.9
March	-5.3	-2.7	-0.6
April	-5.2	-2.8	-6.2
May	-4.2	-1.4	-0.5
June	-3.4	-2.5	-1.5
July	-2.2	-1.3	-0.8
August	-7.9	-2.4	0.2
September	-8.7	-5.2	-5.4
October	-1.2	0.5	1.2
November	-8.4	-5.8	-5.2
December	-8.8	-6.4	-3.7
2013 January	-3.5	-1.3	-4.1
February	-6.9	-3.3	-2.5

Monthly rate evolution¹

The variation rate for the number of passengers on public transport in February as compared with January was -1.1%. This monthly rate was the lowest in the last five years.

**Monthly rate evolution
(month-on-month variation for February as compared with January)**



¹ In order to contribute to the analysis and interpretation of the data, this section has been added including the performance of the monthly rate for the number of users of public transport in recent years. The month-on-month rates of this type of series may have a seasonal behaviour; therefore it is recommended to evaluate them in relation to the item of data for the same month in previous years.

City transport. National results and by Autonomous Community

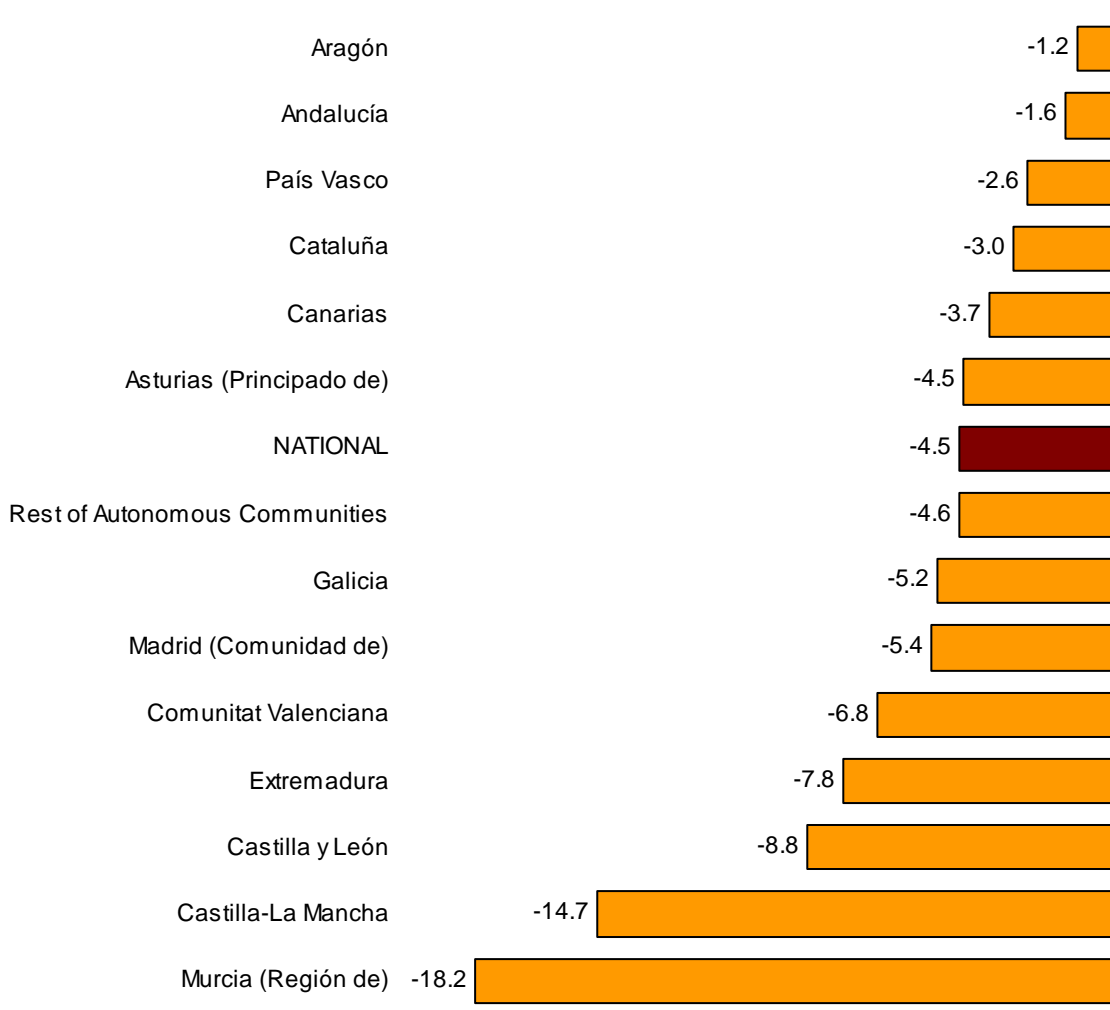
City transport was used by more than 228.1 million passengers in February, 6.9% less than the same month the previous year.

Metropolitan transport registered a 10.2% decrease in its annual rate. All metropolitans registered negative rates, except for that in Palma de Mallorca, which registered an increase of 4.8%. The metropolitan of Valencia registered the highest decrease (-12.4%).

City transport by bus decreased 4.5% in the annual rate, with over 136.7 million passengers in February.

In February, all Autonomous Community registered decreases in the transport by bus. The Autonomous Communities registering the highest decreases were Región de Murcia (-18.2%) and Castilla-La Mancha (-14.7%).

**Annual rate of the number of passengers
City transport by bus**



Inter-city transport

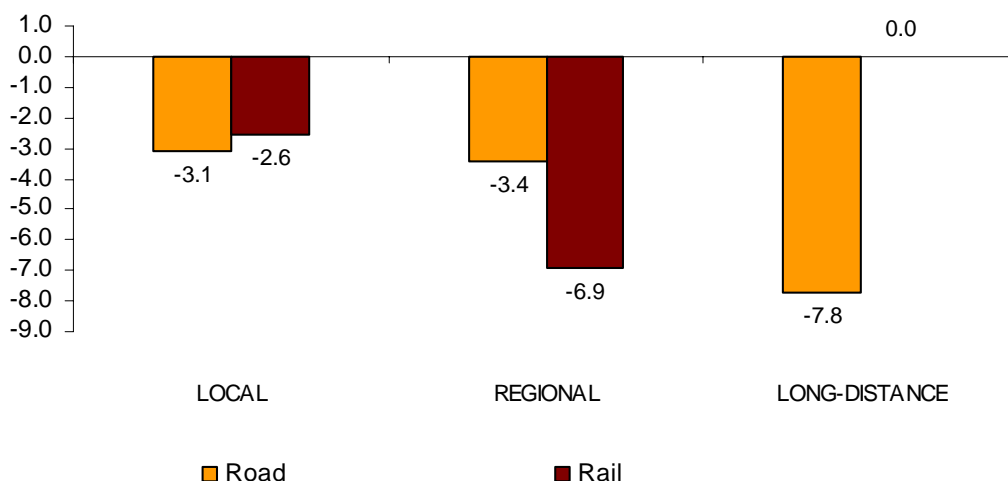
More than 102.6 million passengers used inter-city transport in February, indicating a 3.3% decrease as compared with the same month of 2012.

All types of transport presented negative annual variations except the **sea** transport, which registered an increase 6.3%. The **air** transport registered the greatest drop (-17.8%), followed by the **bus** transport (-3.3%) and the **rail** transport (-2.7%).

Local distance passengers decreased 3.1% for bus transport, and 2.6% for rail transport. Regional passengers distance decreased 6.9% for rail transport and 3.4% for bus transport.

Finally, long-distance passengers decreased 7.8% in bus transport while it remains the same in rail transport.

**Annual rate of the number of passengers
Inter-city transport by type of transport and distance**



Special and unscheduled transport

Over 43.6 million passengers used special and unscheduled transport in January, indicating a 2.5% decrease in the annual rate.

The number of special transport passengers decreased 2.4%, reaching over 34 million. Within this, school transport decreased 3.8% while work transport increased 2.5%.

In turn, unscheduled transport decreased 2.8%, as compared with the same month the previous year, reaching 9.6 million passengers.

Passenger Transport Statistics

February 2013

Provisional data

1. Passenger transport

	Passengers transported (thousands)	% variation	
		Annual	Year-to-date average
BY TYPE OF TRANSPORT	374,418	-5.4	-4.2
City transport	228,138	-6.9	-5.2
Inter-city transport	102,623	-3.3	-2.2
Special and unscheduled transport	43,657	-2.5	-3.3

2. City transport

	Passengers transported (thousands)	% variation	
		Annual	Year-to-date average
CITY TRANSPORT	228,138	-6.9	-5.2
Metropolitan	91,413	-10.2	-8.6
Bus ⁽¹⁾	136,725	-4.5	-2.8

⁽¹⁾ This includes trams and funiculars

2.1 Metropolitan

	Passengers transported (thousands)	% variation	
		Annual	Year-to-date average
NATIONAL	91,413	-10.2	-8.6
Barcelona	29,254	-8.5	-5.9
Bilbao	7,218	-4.4	-1.7
Madrid	48,731	-11.8	-10.9
Sevilla	1,115	-5.9	-5.8
Valencia/València	4,979	-12.4	-11.8
Palma	116	4.8	0.6

2.2 City bus transport

	Passengers transported (thousands)	% variation	
		Annual	Year-to-date average
NATIONAL	136,725	-4.5	-2.8
Andalucía	17,316	-1.6	-1.1
Aragón	10,027	-1.2	0.9
Asturias, Principado de	2,708	-4.5	-2.4
Canarias	4,224	-3.7	0.3
Castilla y León	5,740	-8.8	-6.6
Castilla - La Mancha	1,780	-14.7	-13.1
Cataluña	22,732	-3.0	-0.4
Comunitat Valenciana	10,017	-6.8	-4.7
Extremadura	935	-7.8	-5.7
Galicia	4,815	-5.2	-2.1
Madrid, Comunidad de	39,267	-5.4	-4.3
Murcia, Región de	1,450	-18.2	-18.2
País Vasco	7,222	-2.6	0.0
Rest of AACC ⁽¹⁾	8,491	-4.6	-3.1

⁽¹⁾ In order to protect statistical secrecy, the passengers of the Autonomous Communities of Illes Balears, Cantabria, Comunidad Foral de Navarra and La Rioja and of the Autonomous Cities of Ceuta and Melilla have been grouped

3. Inter-city transport

	Passengers transported (thousands)	% variation	
		Annual	Year-to-date average
INTER-CITY TRANSPORT	102,623	-3.3	-2.2
Road	52,466	-3.3	-1.5
Local	35,531	-3.1	-1.6
Regional	15,758	-3.4	-0.8
Long-distance	1,177	-7.8	-5.5
Rail ⁽¹⁾	47,763	-2.7	-2.5
Local rail	43,691	-2.6	-2.2
Regional rail	2,363	-6.9	-7.7
Long-distance rail	1,709	0.0	-0.1
Air (domestic)	1,924	-17.8	-16.4
Sea (cabotage)	470	6.3	4.4

⁽¹⁾ Local and regional rail include all rail operators and Long-distance rail only includes RENFE

4. Special and unscheduled transport

	Passengers transported (thousands)	% variation	
		Annual	Year-to-date average
SPECIAL AND UNSCHEDULED TRANSPORT	43,657	-2.5	-3.3
Special	34,066	-2.4	-2.3
School	26,100	-3.8	-3.2
Work	7,965	2.5	0.6
Unscheduled	9,591	-2.8	-6.7