

Passenger Transport Statistics (PT)
February 2016. *Provisional data*

The number of passengers using public transport increases by 5.1% in February, as compared with the same month of the previous year

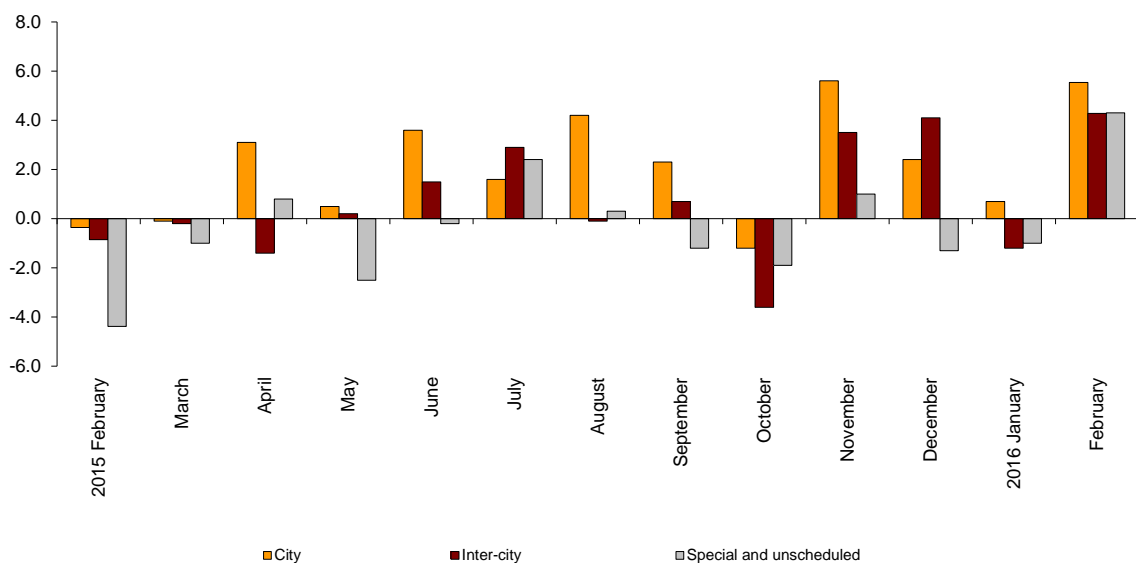
City transport increases by 5.5% in the annual rate and inter-city transport 4.3%

Passengers transport evolution

More than 383.6 million passengers used public transport in February, 5.1% more than in the same month of 2015.

City transport increased by 5.5% and inter-city transport increased by 4.3% in the annual rate. Within the last one, air transport was the one that recorded the greatest increase, with a 16.1% rate.

Annual evolution of passengers transport
Type of transport



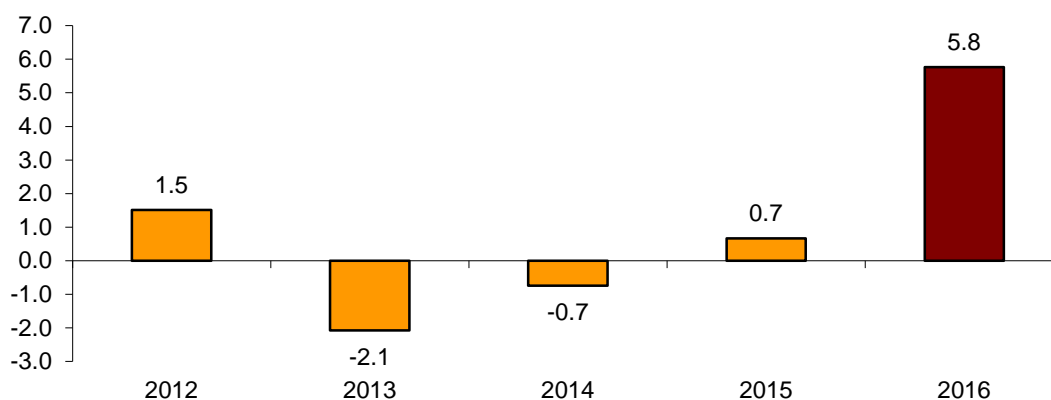
Passengers transport annual evolution, by type of transport

| | City | Inter-city | Special and unschedule |
|---------------|------|------------|------------------------|
| 2015 February | -0.4 | -0.9 | -4.4 |
| March | -0.1 | -0.2 | -1.0 |
| April | 3.1 | -1.4 | 0.8 |
| May | 0.5 | 0.2 | -2.5 |
| June | 3.6 | 1.5 | -0.2 |
| July | 1.6 | 2.9 | 2.4 |
| August | 4.2 | -0.1 | 0.3 |
| September | 2.3 | 0.7 | -1.2 |
| October | -1.2 | -3.6 | -1.9 |
| November | 5.6 | 3.5 | 1.0 |
| December | 2.4 | 4.1 | -1.3 |
| 2016 January | 0.7 | -1.2 | -1.0 |
| February | 5.5 | 4.3 | 4.3 |

Monthly rate evolution

The variation rate for the number of passengers on public transport in February 2016, as compared with January, was 5.8%. In order to contribute to the analysis and interpretation of data, the evolution of the monthly rate of public transport passengers in the last years is shown in the following chart.

**Evolution of the monthly rate
(month-on-month variation for February as compared with January)**



City transport

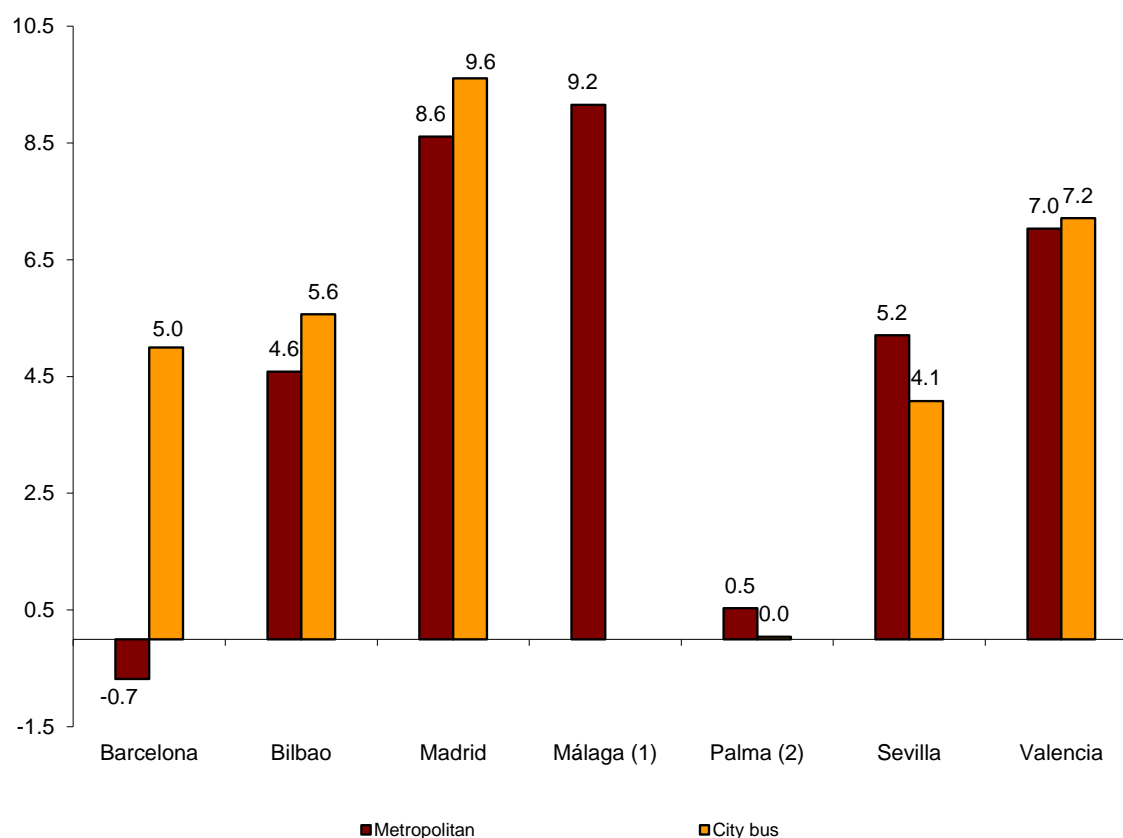
City transport was used by more than 236.3 million passengers in February, 5.5% more than in the same month of 2015.

Metropolitan transport registered an increase of 5.1% and bus transport increased by 5.9%.

Bus transport does not decrease in any city with metropolitan transport and registered the greatest increase in Madrid (9.6%).

In turn, metropolitan transport increased in all cities, except in Barcelona (-0.7%). Málaga registered the greatest increase (9.2%).

Annual rate of city transport passengers in major cities with a Metropolitan



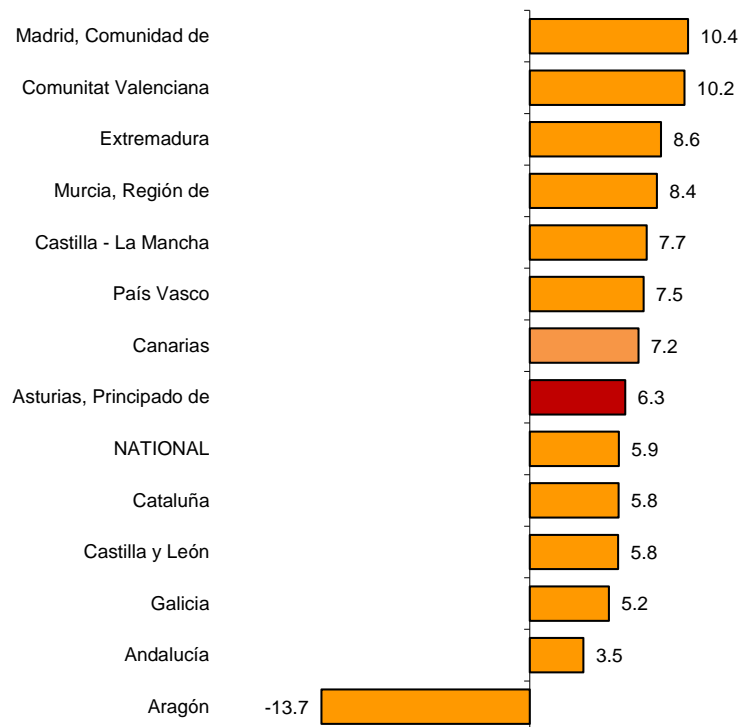
⁽¹⁾ The publication of the city transport by bus in Málaga is not allowed

⁽²⁾ Estimated metropolitan transport data

The number of passengers of bus transport increased in all Autonomous Communities except in Aragón (-13.7%).

Comunidad de Madrid (10.4%), Comunitat Valenciana (10.2%) and Extremadura (8.6%) registered the greatest increases.

Annual rates of the number of passengers City transport by bus



⁽¹⁾ In order to protect statistical secrecy, data of the Autonomous Communities of Illes Balears, Cantabria, Comunidad Foral de Navarra and La Rioja and of the Autonomous Cities of Ceuta and Melilla are not published

Inter-city transport

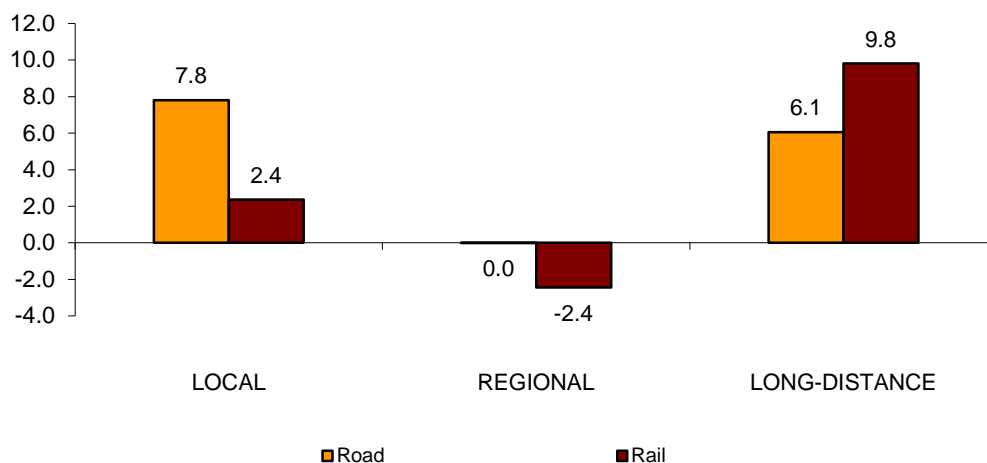
More than 104.3 million passengers used inter-city transport in February, indicating a 4.3% increase as compared with the same month of 2015.

Air transport increased by 16.1%, sea transport increased by 9.4%, bus transport increased by 5.4% and rail transport increased by 2.5%.

Local distance passengers increased by 7.8% for bus transport and increased by 2.4% for rail transport. Regional distance passengers remains unchanged for bus transport and decreased by 2.4% for rail transport.

Finally, long distance passengers increased by 6.1% for bus transport and by 9.8% for rail transport. Within the last one, AVE increased by 13.8%.

Annual rate of the number of passengers Inter-city transport by type of transport and distance



Special and unscheduled transport

More than 43.0 million passengers used special and unscheduled transport in February, indicating an increase of 4.3% in the annual rate.

The number of special transport passengers increased 3.3%, reaching more than 32.0 million users. Within this, school transport increased by 4.3%, and work transport remains unchanged.

In turn, unscheduled transport increased 7.4%, as compared with the same month of the previous year, reaching more than 10.9 million passengers.

Passenger Transport Statistics

February 2016

Provisional data

1. Passenger transport

| | Passengers transported (thousands) | % variation | |
|-----------------------------------|------------------------------------|-------------|----------------------|
| | | Annual | Year-to-date average |
| BY TYPE OF TRANSPORT | 383,667 | 5.1 | 2.5 |
| City transport | 236,311 | 5.5 | 3.1 |
| Inter-city transport | 104,335 | 4.3 | 1.5 |
| Special and unscheduled transport | 43,022 | 4.3 | 1.8 |

2. City transport

| | Passengers transported (thousands) | % variation | |
|--------------------|------------------------------------|-------------|----------------------|
| | | Annual | Year-to-date average |
| CITY TRANSPORT | 236,311 | 5.5 | 3.1 |
| Metropolitan | 96,232 | 5.1 | 2.7 |
| Bus ⁽¹⁾ | 140,078 | 5.9 | 3.4 |

⁽¹⁾ This includes trams and funiculars

2.1 City transport in main cities with a Metropolitan

| | | Passengers transported (thousands) | % variation | |
|-----------|-----------------------------|------------------------------------|-------------|----------------------|
| | | | Annual | Year-to-date average |
| Barcelona | City bus | 15,967 | 5.0 | 3.1 |
| | Metropolitan | 30,150 | -0.7 | -0.8 |
| Bilbao | City bus | 3,215 | 5.6 | 2.5 |
| | Metropolitan | 7,454 | 4.6 | 1.9 |
| Madrid | City bus | 36,743 | 9.6 | 6.4 |
| | Metropolitan | 51,440 | 8.6 | 5.0 |
| Málaga | City bus | (1) | (1) | (1) |
| | Metropolitan | 404 | 9.2 | 6.9 |
| Palma | City bus | 2,691 | 0.0 | 0.6 |
| | Metropolitan ⁽²⁾ | 117 | 0.5 | 0.5 |
| Sevilla | City bus | 6,525 | 4.1 | 2.6 |
| | Metropolitan | 1,252 | 5.2 | 3.2 |
| Valencia | City bus | 7,836 | 7.2 | 3.1 |
| | Metropolitan | 5,415 | 7.0 | 3.8 |

(1) Publication thereof is not allowed

(2) Estimated data

2.2 Urban transport by bus by Autonomous Cities and Communities

| | Passengers transported (thousands) | % variation | |
|-----------------------------|------------------------------------|-------------|----------------------|
| | | Annual | Year-to-date average |
| NACIONAL | 140,078 | 5.9 | 3.4 |
| Andalucía | 17,685 | 3.5 | 2.8 |
| Aragón | 8,550 | -13.7 | -14.0 |
| Asturias, Principado de | 2,711 | 6.3 | 3.4 |
| Balears, Illes | (1) | (1) | (1) |
| Canarias | 4,669 | 7.2 | 4.7 |
| Cantabria | (1) | (1) | (1) |
| Castilla y León | 5,638 | 5.8 | 1.9 |
| Castilla - La Mancha | 1,649 | 7.7 | 4.4 |
| Cataluña | 22,390 | 5.8 | 3.4 |
| Comunitat Valenciana | 11,710 | 10.2 | 6.2 |
| Extremadura | 967 | 8.6 | 4.1 |
| Galicia | 4,946 | 5.2 | 1.6 |
| Madrid, Comunidad de | 41,506 | 10.4 | 7.1 |
| Murcia, Región de | 1,634 | 8.4 | 3.5 |
| Navarra, Comunidad Foral de | (1) | (1) | (1) |
| País Vasco | 7,378 | 7.5 | 6.9 |
| Rioja, La | (1) | (1) | (1) |
| Ceuta | (1) | (1) | (1) |
| Melilla | (1) | (1) | (1) |

3. Inter-city transport

| | Passengers transported (thousands) | % variation | |
|--------------------------|------------------------------------|-------------|----------------------|
| | | Annual | Year-to-date average |
| INTER-CITY TRANSPORT | 104,335 | 4.3 | 1.5 |
| Road | 53,530 | 5.4 | 3.0 |
| Local | 37,285 | 7.8 | 4.5 |
| Regional | 15,101 | 0.0 | -0.7 |
| Long-distance | 1,143 | 6.1 | 5.1 |
| Rail ⁽¹⁾ | 48,030 | 2.5 | -0.6 |
| Local rail | 43,293 | 2.4 | -1.1 |
| Regional rail | 2,362 | -2.4 | 0.7 |
| Long-distance rail | 2,375 | 9.8 | 6.5 |
| AVE | 1,570 | 13.8 | 10.8 |
| Other long-distance rail | 805 | 2.8 | -0.7 |
| Air (domestic) | 2,273 | 16.1 | 15.0 |
| Sea (cabotage) | 502 | 9.4 | 7.2 |

⁽¹⁾ Local and regional rail include all rail operators and Long-distance rail only includes RENFE

4. Special and unscheduled transport

| | Passengers transported (thousands) | % variation | |
|-----------------------------------|------------------------------------|-------------|----------------------|
| | | Annual | Year-to-date average |
| SPECIAL AND UNSCHEDULED TRANSPORT | 43,022 | 4.3 | 1.8 |
| Special | 32,036 | 3.3 | 0.4 |
| School | 24,670 | 4.3 | 0.9 |
| Work | 7,366 | 0.0 | -1.0 |
| Unscheduled | 10,986 | 7.4 | 5.9 |

For further information see INEbase - www.ine.es/en/ All press releases at: www.ine.es/prensa/prensa_en.htm

Press Office: Telephone numbers: 91 583 93 63 / 94 08 – Fax: 91 583 90 87 - gprensa@ine.es

Information Area: Telephone number: 91 583 91 00 – Fax: 91 583 91 58 – www.ine.es/infoine