

11 April 2018

Passenger Transport Statistics (PT)
February 2018. Provisional data

The number of passengers using public transport increases by 1.3% in February, as compared with the same month of the previous year

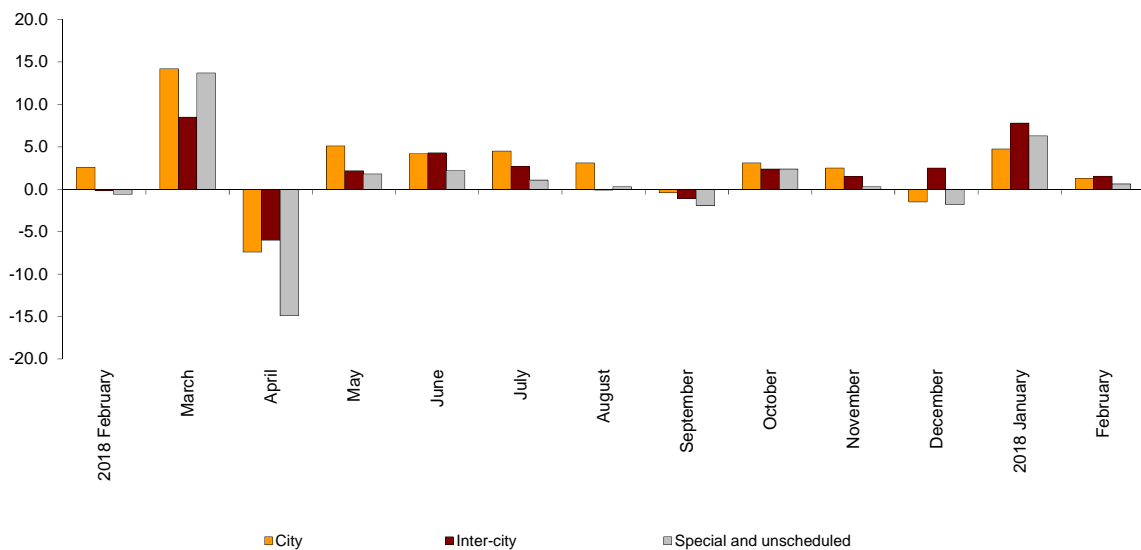
City transport increases by 1.3% in the annual rate and inter-city transport by 1.6%

Evolution of passenger transport

More than 394.4 million passengers used public transport in February, 1.3% more than in the same month of 2017.

City transport increased by 1.3% in the annual rate and inter-city transport did so by 1.6%. Within the latter, air transport increased the most, with a variation of 15.5%.

Annual evolution of passengers transport
Type of transport



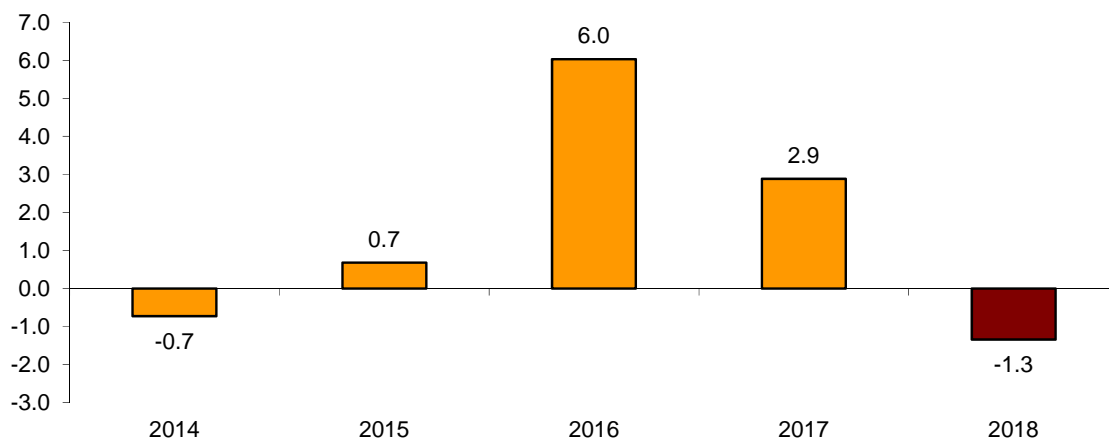
Passengers transport annual evolution, by type of transport

	City	Inter-city	Special and unscheduled
2017 February	2.6	-0.1	-0.6
March	14.2	8.5	13.7
April	-7.4	-6.0	-14.9
May	5.1	2.2	1.8
June	4.2	4.3	2.2
July	4.5	2.7	1.1
August	3.1	-0.1	0.3
September	-0.4	-1.1	-1.9
October	3.1	2.4	2.4
November	2.5	1.5	0.3
December	-1.5	2.5	-1.8
2018 January	4.7	7.8	6.3
February	1.3	1.6	0.6

Evolution of the monthly rate

The variation rate of the number of public transport passengers in February as compared with January, was -1.3%. To contribute to the analysis and interpretation of data, the evolution of the monthly rate of public transport passengers in recent years is shown in the following chart.

**Evolution of the monthly rate
(month-on-month variation for February as compared with January)**



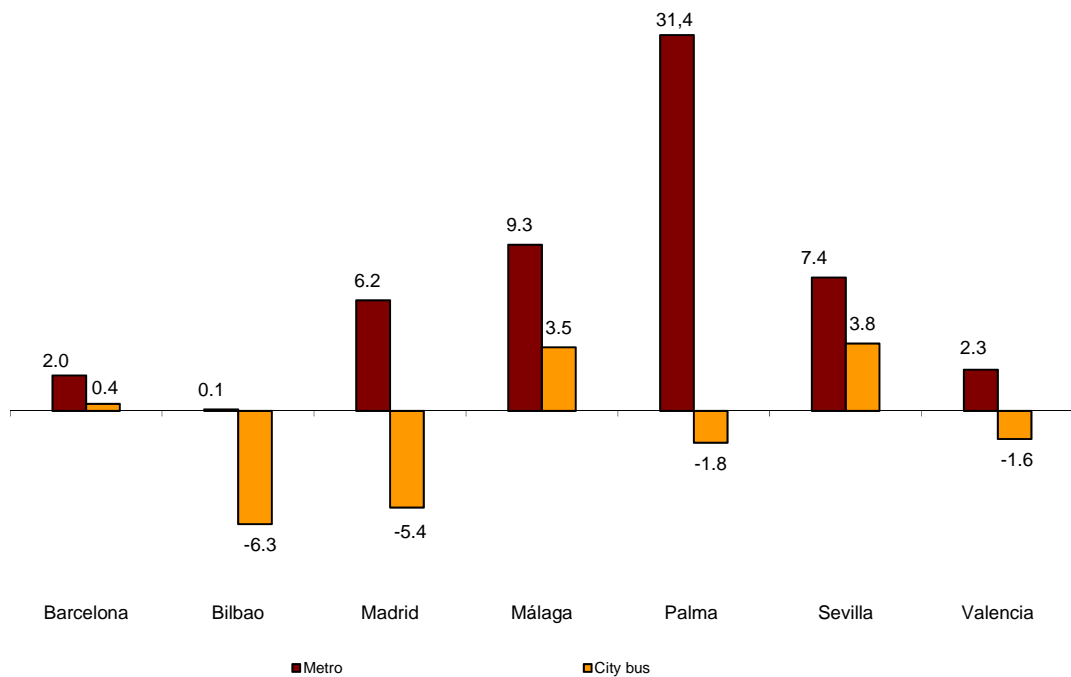
City transport

City transport was used by more than 244.4 million passengers in February, 1.3% more than in the same month of 2017.

Subway transport increased by 4.2% and grew in all the cities. Palma's subway presented the largest increase (31.4%).

Among the cities with subway, the greatest increase in bus transport was registered in Sevilla (3.8%), while the greatest decrease was registered in Bilbao (-6.3%).

Annual rate of city transport passengers in major cities with Metro

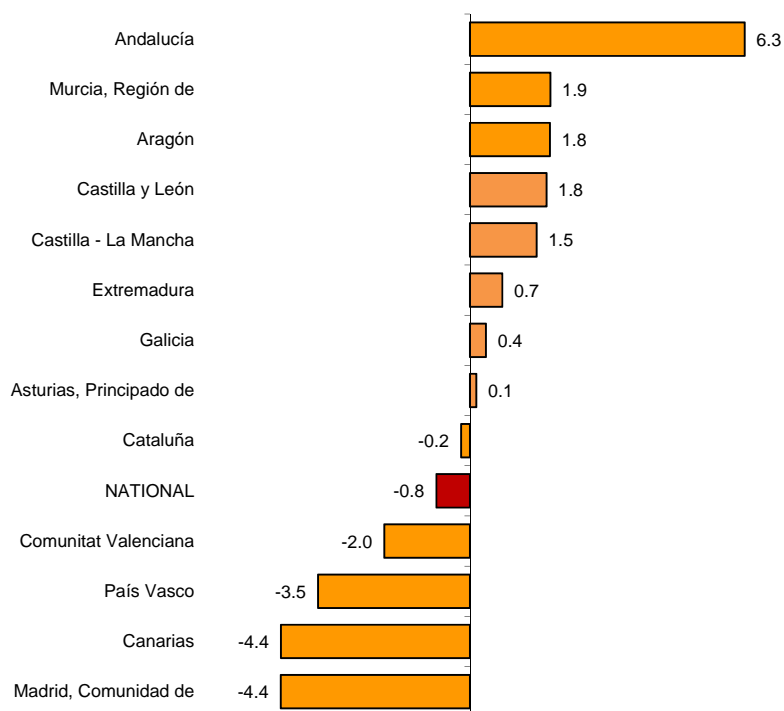


City transport by bus decreased 0.8% in February, as compared with the same month of the previous year.

The number of passengers of bus transport registered the greatest increases in Andalucía (6.3%), Región de Murcia (1.9%) and Aragón and Castilla y León (1.8% in both cases).

In turn, the greatest decreases were registered in Comunidad de Madrid and Canarias (-4.4% in both cases) and in País Vasco (-3.5%).

Annual rates of the number of passengers City transport by bus



(1) To maintain statistical secrecy, data of the Autonomous Communities of Illes Balears, Cantabria, Comunidad Foral de Navarra and La Rioja and the Autonomous Cities of Ceuta and Melilla are not separately published.

Inter-city transport

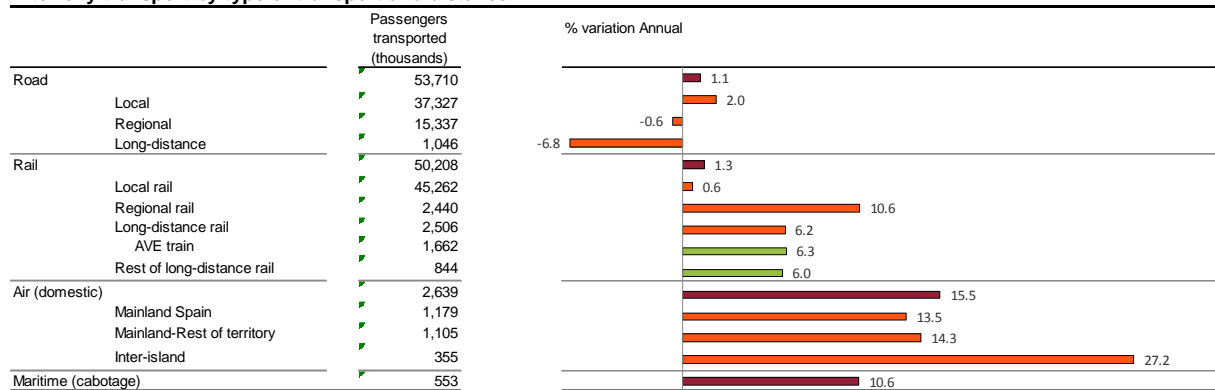
More than 107.1 million passengers used inter-city transport in February, representing a 1.6% increase as compared with the same month of 2017.

By type of transport, air transport increased by 15.5%, maritime transport by 10.6%, rail transport by 1.3%, and bus transport by 1.1%.

Local distance passengers increased by 2.0% for bus transport and by 0.6% for rail transport. Regional distance passengers decreased by 0.6% for bus transport and increased by 10.6% for rail transport.

Finally, long distance passengers decreased by 6.8% for bus transport and increased by 6.2% for rail transport. Within the latter, AVE (high speed railway) increased by 6.3%.

Inter-city transport by type of transport and distance



Special and unscheduled transport

More than 42.8 million passengers used special and unscheduled transport in February, indicating an increase of 0.6% in the annual rate.

The number of special transport passengers decreased 1.4%, reaching more than 30.6 million users. Within this, school transport decreased by 1.5%, and work transport did so by 1.0%.

In turn, unscheduled transport increased 6.0%, as compared with the same month of 2017, reaching more than 12.1 million passengers.

For further information see **INEbase**: www.ine.es/en/ Twitter: [@es_ine](https://twitter.com/es_ine)

All press releases at: www.ine.es/en/prensa/prensa_en.htm

Press office: Telephone numbers: (+34) 91 583 93 63 /94 08 – gprensa@ine.es

Information Area: Telephone number: (+34) 91 583 91 00 – www.ine.es/infoine/?L=1

Passenger Transport Statistics

February 2018

Provisional data

1. Passenger transport

	Passengers transported (thousands)	% variation	
		Annual	Year-to-date average
BY TYPE OF TRANSPORT	394,421	1.3	3.5
City transport	244,486	1.3	3.0
Inter-city transport	107,109	1.6	4.6
Special and unscheduled transport	42,826	0.6	3.3

2. City transport

	Passengers transported (thousands)	% variation	
		Annual	Year-to-date average
CITY TRANSPORT	244,486	1.3	3.0
Metro	102,891	4.2	4.8
Bus ⁽¹⁾	141,595	-0.8	1.8

⁽¹⁾ This includes trams and funiculars

2.1 City transport in major cities with Metro

		Passengers transported (thousands)	% variation	
			Annual	Year-to-date average
Barcelona	City bus	16,927	0.4	3.6
	Metro	32,739	2.0	2.6
Bilbao	City bus	2,994	-6.3	-2.8
	Metro	7,329	0.1	1.1
Madrid	City bus	34,932	-5.4	-1.5
	Metro	55,436	6.2	6.7
Málaga	City bus	3,343	3.5	3.3
	Metro	469	9.3	11.5
Palma	City bus	2,836	-1.8	2.3
	Metro	87	31.4	30.9
Sevilla	City bus	6,452	3.8	3.5
	Metro	1,348	7.4	5.9
Valencia	City bus	7,919	-1.6	0.9
	Metro	5,485	2.3	3.3

2.2 Urban transport by bus by Autonomous Cities and Communities

	Passengers transported (thousands)	% variation	
		Annual	Year-to-date average
NACIONAL	141,595	-0.8	1.8
Andalucía	18,244	6.3	4.3
Aragón	10,182	1.8	3.3
Asturias, Principado de	2,564	0.1	3.4
Balears, Illes	(1)	(1)	(1)
Canarias	4,564	-4.4	-1.1
Cantabria	(1)	(1)	(1)
Castilla y León	5,597	1.8	5.4
Castilla - La Mancha	1,581	1.5	5.0
Cataluña	23,297	-0.2	3.3
Comunitat Valenciana	11,701	-2.0	0.7
Extremadura	928	0.7	2.7
Galicia	4,866	0.4	2.2
Madrid, Comunidad de	40,125	-4.4	-0.8
Murcia, Región de	1,741	1.9	6.1
Navarra, Comunidad Foral de	(1)	(1)	(1)
País Vasco	7,205	-3.5	-0.4
Rioja, La	(1)	(1)	(1)
Ceuta	(1)	(1)	(1)
Melilla	(1)	(1)	(1)

3. Inter-city transport

	Passengers transported (thousands)	% variation	
		Annual	Year-to-date average
INTER-CITY TRANSPORT	107,109	1.6	4.6
Road	53,710	1.1	3.6
Local	37,327	2.0	4.0
Regional	15,337	-0.6	3.4
Long-distance	1,046	-6.8	-5.1
Rail ⁽¹⁾	50,208	1.3	5.0
Local rail	45,262	0.6	4.9
Regional rail	2,440	10.6	6.6
Long-distance rail	2,506	6.2	5.4
AVE train	1,662	6.3	5.9
Rest of long-distance rail	844	6.0	4.7
Air (domestic)	2,639	15.5	15.4
Mainland Spain	1,179	13.5	14.4
Mainland-Rest of territory	1,105	14.3	13.1
Inter-island	355	27.2	27.6
Maritime (cabotage)	553	10.6	13.0

⁽¹⁾ Local rail includes all rail operators and regional and long-distance rail include only RENFE

4. Special and unscheduled transport

	Passengers transported (thousands)	% variation	
		Annual	Year-to-date average
SPECIAL AND UNSCHEDULED TRANSPORT	42,826	0.6	3.3
Special	30,659	-1.4	1.5
School	24,052	-1.5	1.8
Work	6,608	-1.0	0.4
Unscheduled	12,166	6.0	8.5