

12 June 2017

Passenger Transport Statistics (PT)
April 2017. *Provisional data*

The number of passengers using public transport decreases by 7.9% in April, as compared with the same month of the previous year

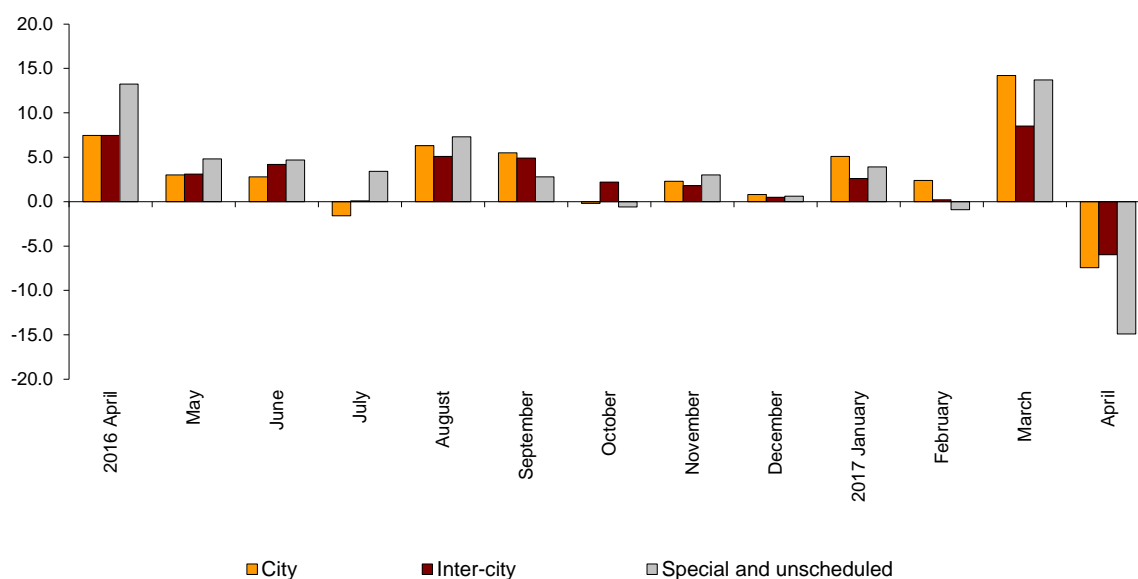
City transport decreases by 7.4% in the annual rate and inter-city transport decreases by 6.0%

Evolution of passenger transport

More than 382.5 million passengers used public transport in April, 7.9% less than in the same month of 2016.

City transport decreased by 7.4% in the annual rate and inter-city transport did so by 6.0%. Within this, bus transport was the one that decreased the most, with a -8.2% rate.

Annual evolution of passengers transport
Type of transport



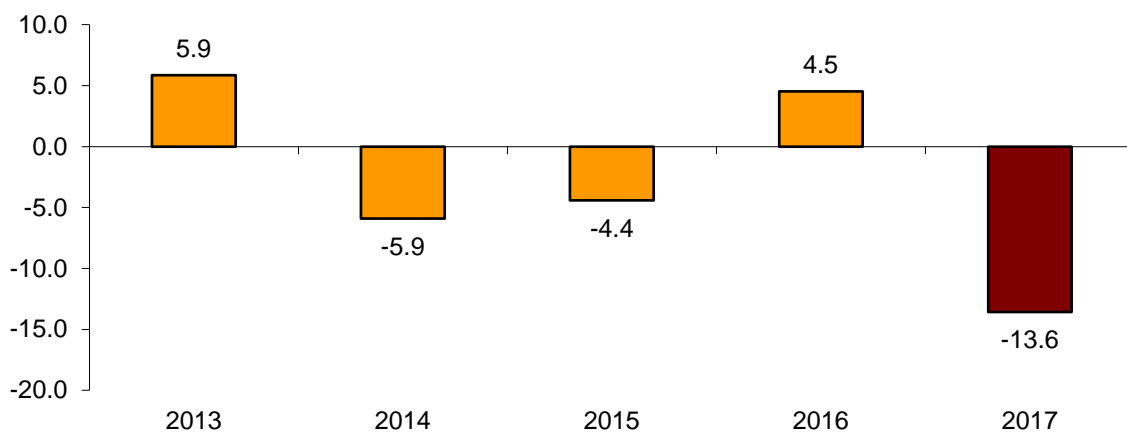
Passengers transport annual evolution, by type of transport

	City	Inter-city	Special and unschedule
2016 April	7.4	7.4	13.2
May	3.0	3.1	4.8
June	2.8	4.2	4.7
July	-1.6	0.1	3.4
August	6.3	5.1	7.3
September	5.5	4.9	2.8
October	-0.2	2.2	-0.6
November	2.3	1.8	3.0
December	0.8	0.5	0.6
2017 January	5.1	2.6	3.9
February	2.4	0.2	-0.9
March	14.2	8.5	13.7
April	-7.4	-6.0	-14.9

Monthly rate evolution

The variation rate of the number of passengers of public transport in April as compared with March was -13.6%. In order to contribute to the analysis and interpretation of data, the evolution of the monthly rate of public transport passengers in the last years is shown in the following chart.

**Evolution of the monthly rate
(month-on-month variation for April as compared with March)**



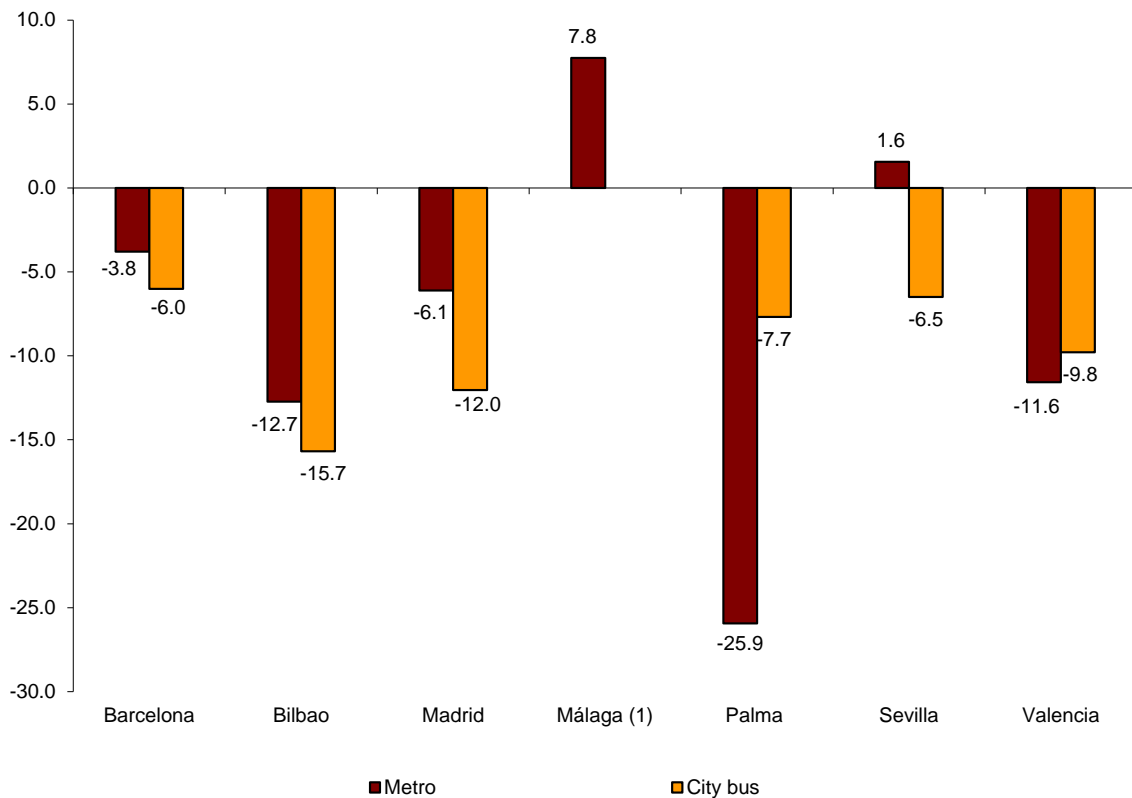
City transport

City transport was used by more than 234.0 million passengers in April, 7.4% less than in the same month of 2016.

Metro transport decreased by 5.9%. Metro transport in Málaga registered the greatest increase (7.8%), while in Palma recorded the largest decrease (-25.9%).

All cities with metro transport registered negative rates for bus transport. The highest decrease was registered in Bilbao (-15.7%).

Annual rate of city transport passengers in major cities with Metro



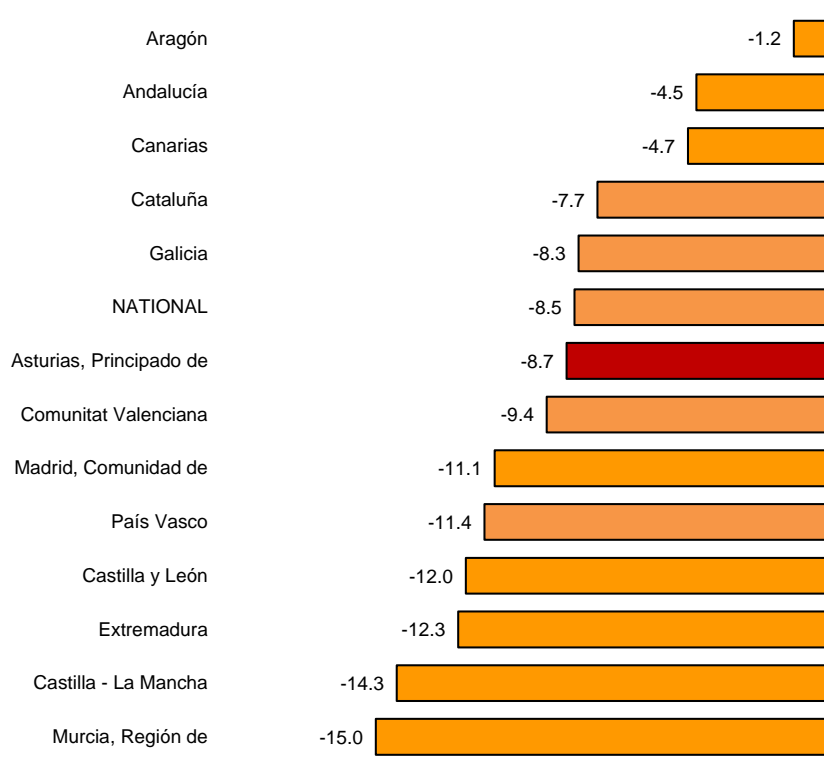
(1) The publication of the city transport by bus in Málaga is not allowed

City transport by bus decreased 8.5% with regard to the same month of the previous year.

All Autonomous Communities registered negative annual rates. The greatest decreases were registered in Región de Murcia (-15.0%), Castilla-La Mancha (-14.3%) and Extremadura (-12.3%).

In turn, Aragón (-1.2%), Andalucía (-4.5%) and Canarias (-4.7%) registered the lowest decreases.

**Annual rates of the number of passengers
City transport by bus**



(1) In order to maintain statistical secrecy, data of the Autonomous Communities of Illes Balears, Cantabria, Comunidad Foral de Navarra and La Rioja and of the Autonomous Cities of Ceuta and Melilla are not published.

Inter-city transport

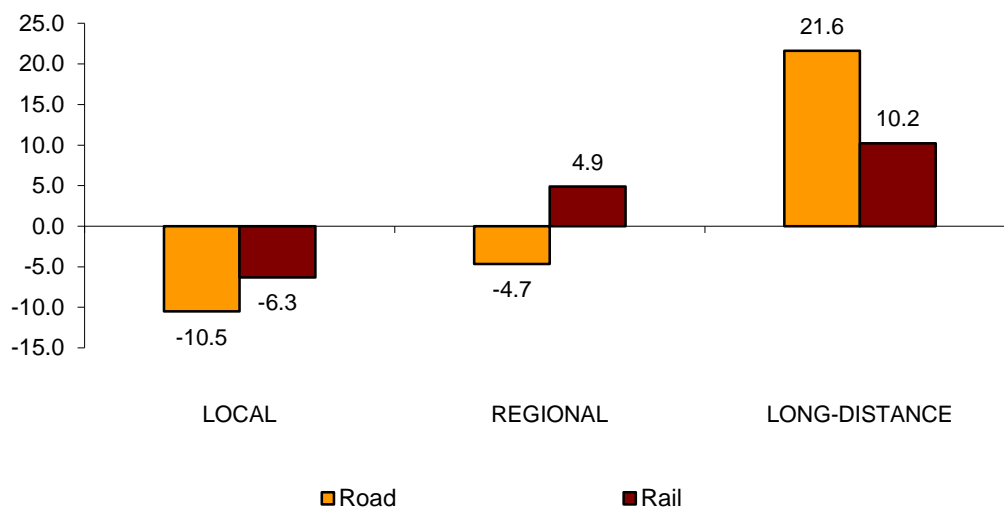
More than 106.2 million passengers used inter-city transport in April, representing a 6.0% decrease as compared with the same month of 2016.

By type of transport, maritime transport increased by 29.5% and air transport did so by 13.0%. In turn, bus transport decreased by 8.2% and rail transport did so by 4.9%.

Local distance passengers decreased by 10.5% for bus transport and by 6.3% for rail transport. Regional distance passengers decreased by 4.7% for bus transport, but increased 4.9% for rail transport.

Finally, long distance passengers increased by 21.6% for bus transport and by 10.2% for rail transport. Within the last one, AVE increased by 6.7%.

**Annual rate of the number of passengers
Inter-city transport by type of transport and distance**



Special and unscheduled transport

More than 42.2 million passengers used special and unscheduled transport in April, indicating a decrease of 14.9% in the annual rate.

The number of special transport passengers decreased by 27.1%, reaching more than 24.3 million users. Within this, school transport decreased by 28.0%, and work transport did so by 23.9%.

In turn, unscheduled transport increased 10.3%, as compared with the same month of 2016, reaching more than 17.9 million passengers.

Passenger Transport Statistics

April 2017

Provisional data

1. Passenger transport

	Passengers transported (thousands)	% variation	
		Annual	Year-to-date average
BY TYPE OF TRANSPORT	382,503	-7.9	2.4
City transport	234,038	-7.4	3.4
Inter-city transport	106,223	-6.0	1.3
Special and unscheduled transport	42,242	-14.9	-0.2

2. City transport

	Passengers transported (thousands)	% variation	
		Annual	Year-to-date average
CITY TRANSPORT	234,038	-7.4	3.4
Metro	96,916	-5.9	4.3
Bus ⁽¹⁾	137,121	-8.5	2.8

⁽¹⁾ This includes trams and funiculars

2.1 City transport in major cities with Metro

		Passengers transported (thousands)	% variation	
			Annual	Year-to-date average
Barcelona	City bus	16,755	-6.0	5.8
	Metro	33,154	-3.8	5.4
Bilbao	City bus	2,735	-15.7	-0.2
	Metro	6,649	-12.7	0.1
Madrid	City bus	33,883	-12.0	1.2
	Metro	49,919	-6.1	4.5
Málaga	City bus	(1)	(1)	(1)
	Metro	507	7.8	7.7
Palma	City bus	3,232	-7.7	2.7
	Metro	55	-25.9	-1.4
Sevilla	City bus	7,270	-6.5	-2.6
	Metro	1,853	1.6	-1.2
Valencia	City bus	7,131	-9.8	7.0
	Metro	4,779	-11.6	2.5

(1) Publication thereof is not allowed

2.2 Urban transport by bus by Autonomous Cities and Communities

	Passengers transported (thousands)	% variation	
		Annual	Year-to-date average
NATIONAL	137,121	-8.5	2.8
Andalucía	19,231	-4.5	-0.7
Aragón	9,535	-1.2	11.2
Asturias, Principado de	2,525	-8.7	-2.8
Balears, Illes	(1)	(1)	(1)
Canarias	4,713	-4.7	3.2
Cantabria	(1)	(1)	(1)
Castilla y León	5,169	-12.0	-0.8
Castilla - La Mancha	1,482	-14.3	-3.1
Cataluña	22,969	-7.7	4.6
Comunitat Valenciana	10,057	-9.4	5.4
Extremadura	857	-12.3	0.3
Galicia	4,825	-8.3	1.0
Madrid, Comunidad de	38,741	-11.1	2.3
Murcia, Región de	1,436	-15.0	4.5
Navarra, Comunidad Foral de	(1)	(1)	(1)
País Vasco	6,600	-11.4	1.9
Rioja, La	(1)	(1)	(1)
Ceuta	(1)	(1)	(1)
Melilla	(1)	(1)	(1)

3. Inter-city transport

	Passengers transported (thousands)	% variation	
		Annual	Year-to-date average
INTER-CITY TRANSPORT	106,223	-6.0	1.3
Road	52,945	-8.2	-0.7
Local	36,191	-10.5	-1.1
Regional	15,315	-4.7	0.0
Long-distance	1,439	21.6	3.7
Rail ⁽¹⁾	49,361	-4.9	3.1
Local rail	43,797	-6.3	3.1
Regional rail	2,739	4.9	1.9
Long-distance rail	2,825	10.2	4.5
AVE train	1,824	6.7	4.6
Rest of long-distance rail	1,001	17.3	4.2
Air (domestic)	3,060	13.0	5.8
Maritime (cabotage)	857	29.5	5.5

⁽¹⁾ Local rail includes all rail operators and regional and long-distance rail include only RENFE

4. Special and unscheduled transport

	Passengers transported (thousands)	% variation	
		Annual	Year-to-date average
SPECIAL AND UNSCHEDULED TRANSPORT	42,242	-14.9	-0.2
Special	24,336	-27.1	-3.1
School	18,765	-28.0	-1.0
Work	5,571	-23.9	-9.9
Unscheduled	17,906	10.3	6.7

For further information see INEbase - www.ine.es/en/ All press releases at: www.ine.es/prensa/prensa_en.htm

Press Office: Telephone numbers: 91 583 93 63 / 94 08 – Fax: 91 583 90 87 - gprensa@ine.es

Information Area: Telephone number: 91 583 91 00 – Fax: 91 583 91 58 – www.ine.es/infoine