

**Passenger Transport Statistics (PT)**  
*May 2013. Provisional data*

**The number of passengers using public transport decreases 2.8% in May, as compared with the same month of the previous year**

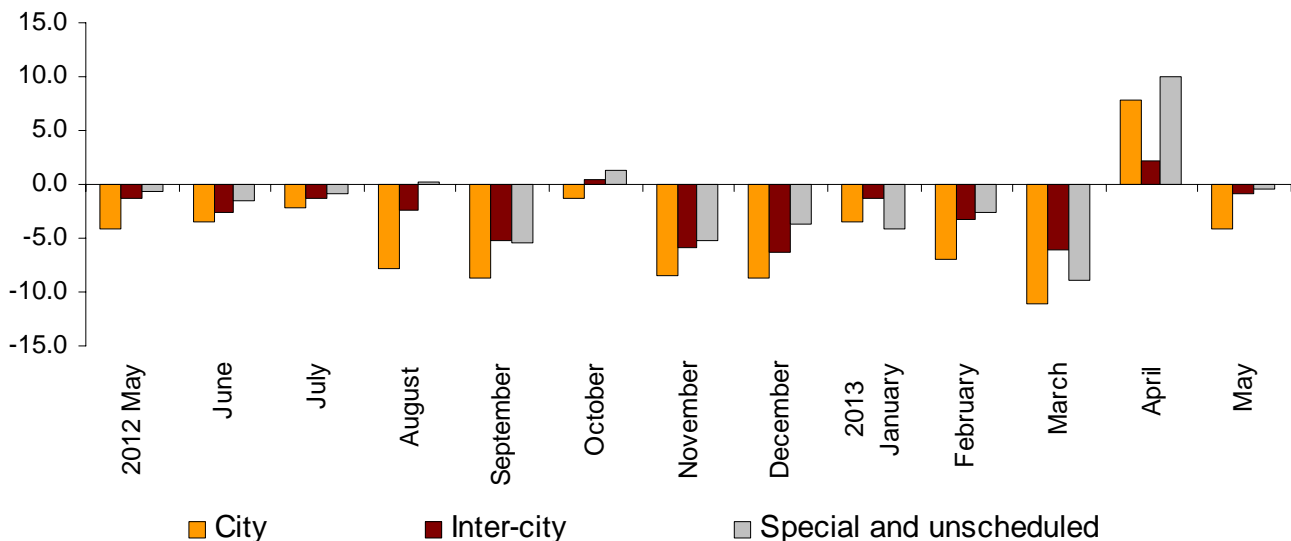
**The city transport decreases 4.1% in the annual rate and the inter-city transport 0.9%**

**Passengers transport evolution**

More than 413.6 million passengers used public transport in Mai, 2.8% less than the same month of the previous year.

The city transport decreased 4.1% in the annual rate and the inter-city transport 0.9%. Within this, the most significant drop was that of the air transport, with a rate of -15.1%.

**Passenger transport annual performance**  
**Type of transport**



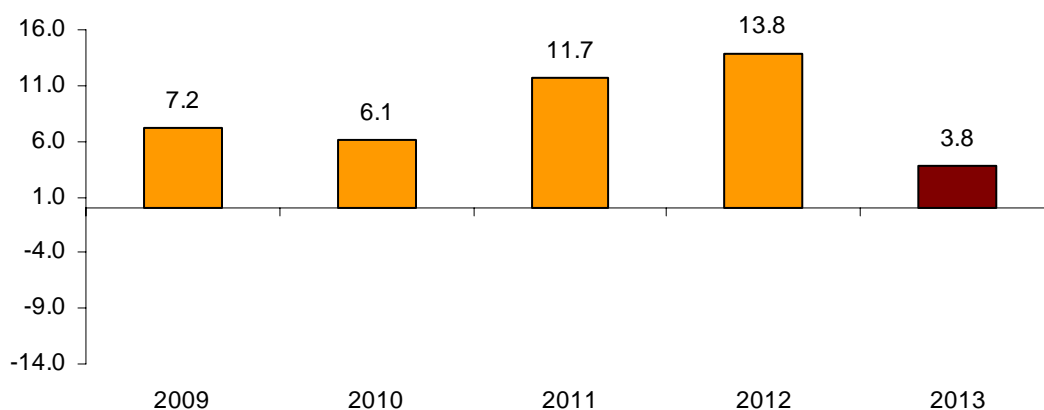
**Passengers transport annual evolution, by type of transport**

	City	Inter-city	Special and unscheduled
2012 May	-4.2	-1.4	-0.5
June	-3.4	-2.5	-1.5
July	-2.2	-1.3	-0.8
August	-7.9	-2.4	0.2
September	-8.7	-5.2	-5.4
October	-1.2	0.5	1.2
November	-8.4	-5.8	-5.2
December	-8.8	-6.4	-3.7
2013 January	-3.5	-1.3	-4.1
February	-6.9	-3.3	-2.5
March	-11.1	-6.2	-8.8
April	7.8	2.1	9.9
May	-4.1	-0.9	-0.5

**Monthly rate evolution<sup>1</sup>**

The variation rate for the number of passengers on public transport in May as compared with April was 3.8%. This monthly rate was the lowest in the last five years.

**Monthly rate performance  
(month-on-month variation for May as compared with April)**



<sup>1</sup> In order to contribute to the analysis and interpretation of the data, this section has been added including the performance of the monthly rate for the number of users of public transport in recent years. The month-on-month rates of this type of series may have a seasonal behaviour; therefore it is recommended to evaluate them in relation to the item of data for the same month in previous years.

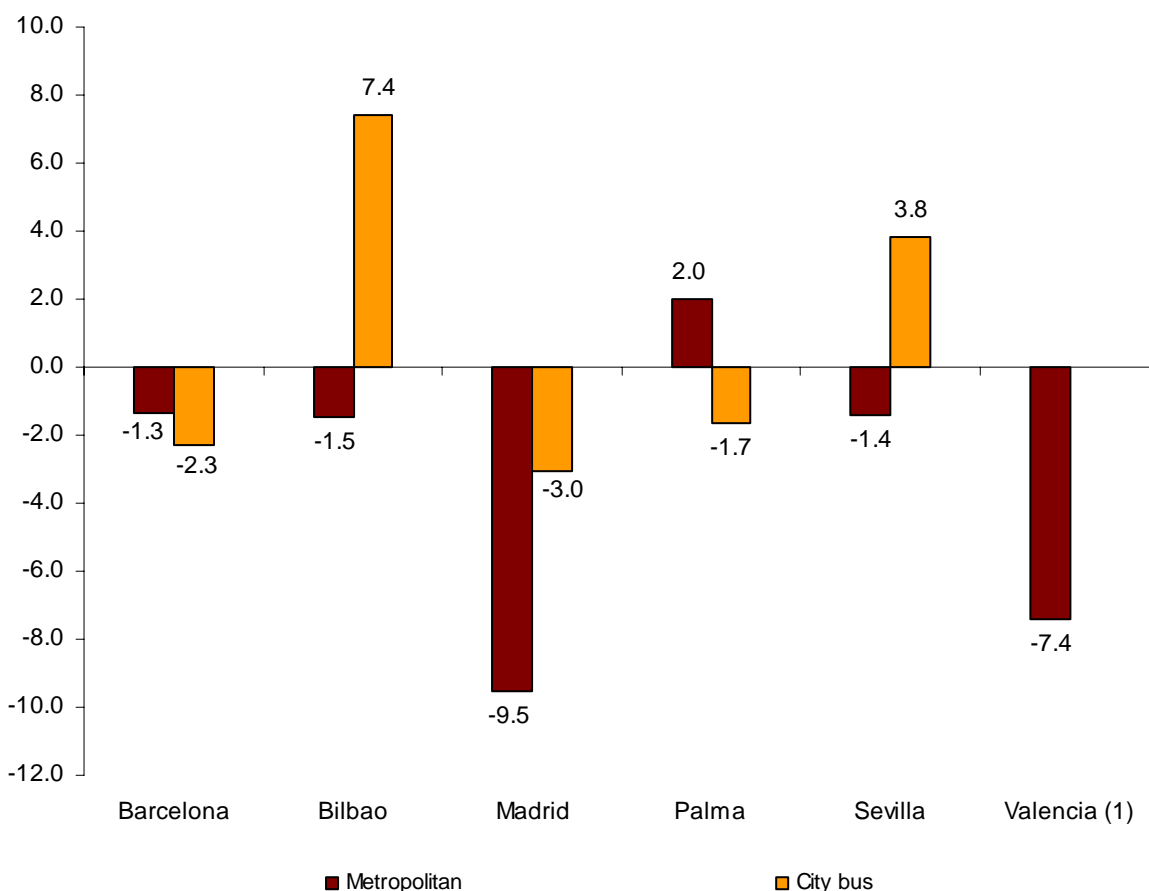
**City transport.**

City transport was used by nearly 246.8 million passengers in May, 4.1% less than the same month of the previous year.

Metropolitan transport registered a 6.0% decrease and bus transport drops 2.8%. According to the data of the cities providing metropolitan transport, all the cities registered a decrease except Palma, with an increase of 2.0%.

For the first time, the INE disseminates data on bus transport of the cities providing metropolitan transport. Bus transport only increases in Bilbao (7.4%) and in Sevilla (3.8%) in May.

**Interannual rate of city transport passengers in cities with a Metropolitan**

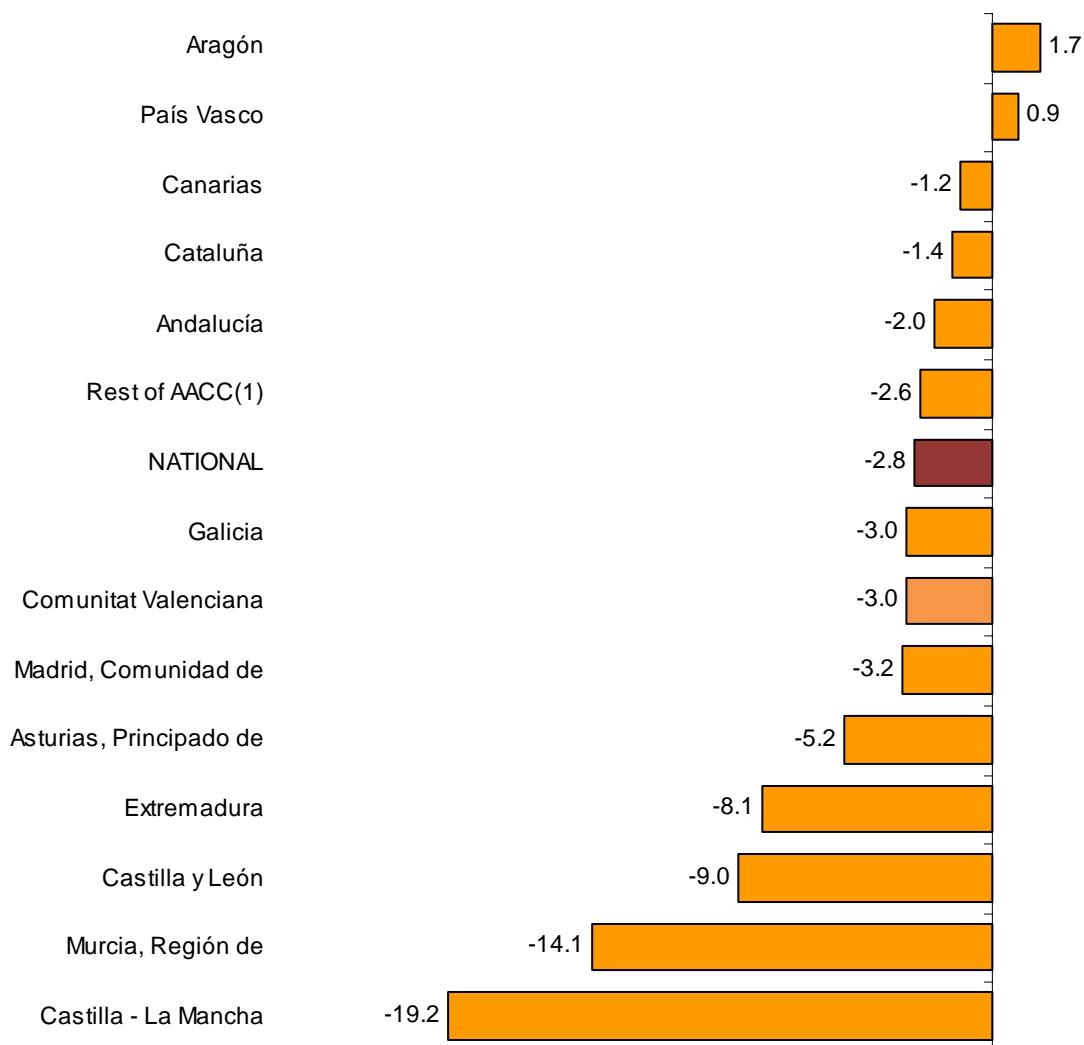


<sup>(1)</sup>The publication of the city transport by bus in Valencia is not allowed.

All the Autonomous Communities registered decreases in the transport by bus, except for Aragón (1.7%) and País Vasco (0.9%).

The Autonomous Communities that registered the greatest decreases are Castilla-La Mancha (-19.2%) and Región de Murcia (-14.1%).

**Annual rate of the number of passengers  
City transport by bus**



(1) In order to protect statistical secrecy, the passengers of the Autonomous Communities of Illes Balears, Cantabria, Comunidad Foral de Navarra and La Rioja and of the Autonomous Cities of Ceuta and Melilla have been grouped

## Inter-city transport

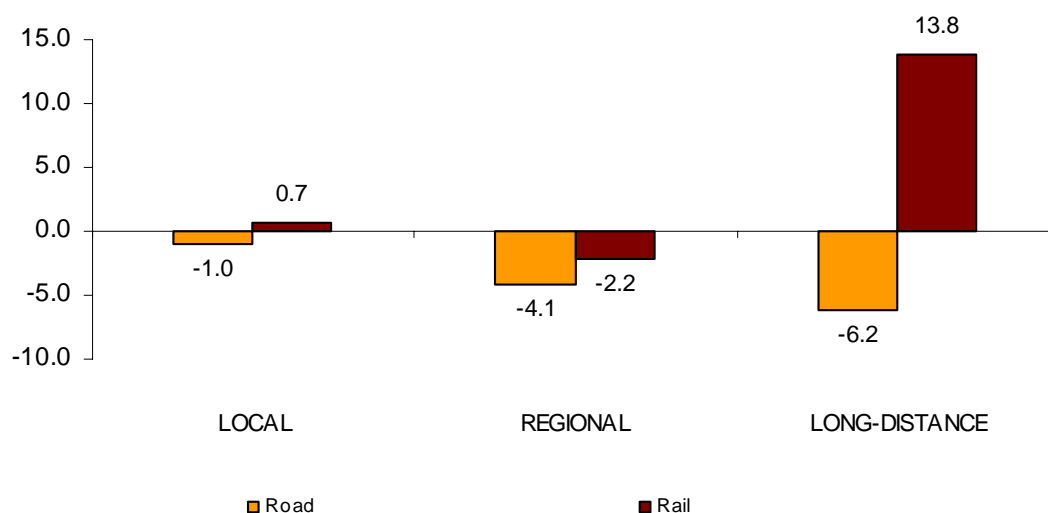
More than 113.9 million passengers used inter-city transport in May, indicating a 0.9% decrease as compared with the same month of 2012.

The air and bus transport decreased 2.0% and 15.1%, respectively. In turn, rail transport increased 1.1% and sea transport increased 9.9% as compared with May 2012.

Local distance passengers decreased 1.0% for bus transport and increased 0.7% for rail transport. Regional passengers distance decreased 4.1% for bus transport and 2.2% for rail transport.

Finally, long-distance passengers decreased 6.2% in bus transport while rail transport increased 13.8%.

## Tasa anual del número de viajeros Transporte interurbano por tipo de transporte y distancia



## Special and unscheduled transport

Over 53 million passengers used special and unscheduled transport in May, indicating a 0.5% decrease in the annual rate.

The number of special transport passengers increased 1.5%, reaching almost 38 million users. Within this, school transport decreased 0.3% while work transport increased 8.2%.

In turn, unscheduled transport decreased 5.4%, as compared with the same month the previous year, reaching more than 14.9 million passengers.

## Passenger Transport Statistics

**May 2013**

Provisional data

### 1. Passenger transport

	Passengers transported (thousands)	% variation	
		Annual	Year-to-date average
<b>BY TYPE OF TRANSPORT</b>	<b>413,694</b>	<b>-2.8</b>	<b>-3.0</b>
City transport	246,799	-4.1	-3.8
Inter-city transport	113,905	-0.9	-2.0
Special and unscheduled transport	52,991	-0.5	-1.5

### 2. City transport

	Passengers transported (thousands)	% variation	
		Annual	Year-to-date average
<b>CITY TRANSPORT</b>	<b>246,799</b>	<b>-4.1</b>	<b>-3.8</b>
Metropolitan	98,235	-6.0	-6.7
Bus <sup>(1)</sup>	148,564	-2.8	-1.7

<sup>(1)</sup> This includes trams and funiculars

## 2.1 City transport in cities with a Metropolitan

		Passengers transported (thousands)	% variation	
			Annual	Year-to-date average
Barcelona	City bus	17,405	-2.3	-1.2
	Metropolitan	33,889	-1.3	-3.6
Bilbao	City bus	3,101	7.4	1.0
	Metropolitan	7,915	-1.5	-0.5
Madrid	City bus	36,824	-3.0	-3.4
	Metropolitan	49,561	-9.5	-9.4
Palma	City bus	3,484	-1.7	-3.1
	Metropolitan	112	2.0	2.2
Sevilla	City bus	7,103	3.8	-1
	Metropolitan	1,201	-1.4	-3.3
Valencia	City bus	(1)	(1)	(1)
	Metropolitan	5,557	-7.4	-8.6

(1) Publication thereof is not allowed

## 2.2 City bus transport

	Passengers transported (thousands)	% variation	
		Annual	Year-to-date average
NATIONAL	148,564	-2.8	-1.7
Andalucía	20,159	-2.0	-1.3
Aragón	11,110	1.7	1.8
Asturias, Principado de	2,888	-5.2	-1.6
Canarias	4,512	-1.2	0.9
Castilla y León	6,029	-9.0	-6.4
Castilla - La Mancha	1,701	-19.2	-13.9
Cataluña	24,226	-1.4	-0.2
Comunitat Valenciana	11,254	-3.0	-3.2
Extremadura	1,053	-8.1	-5.3
Galicia	5,248	-3.0	-1.3
Madrid, Comunidad de	41,535	-3.2	-2.3
Murcia, Región de	1,572	-14.1	-14.8
País Vasco	7,508	0.9	1.4
Rest of AACC (1)	9,769	-2.6	-1.7

(1) In order to protect statistical secrecy, the passengers of the Autonomous Communities of Illes Balears, Cantabria, Comunidad Foral de Navarra and La Rioja and of the Autonomous Cities of Ceuta and Melilla have been grouped

### 3. Inter-city transport

	Passengers transported (thousands)	% variation	
		Annual	Year-to-date average
<b>INTER-CITY TRANSPORT</b>	113,905	-0.9	-2.0
Road	59,569	-2.0	-1.2
Local	41,572	-1.0	-0.1
Regional	16,673	-4.1	-3.2
Long-distance	1,324	-6.2	-6.7
Rail <sup>(1)</sup>	51,177	1.1	-2.1
Local rail	46,136	0.7	-2.4
Regional rail	2,792	-2.2	-3.4
Long-distance rail	2,248	13.8	7.8
Air (domestic)	2,461	-15.1	-16.1
Sea (cabotage)	698	9.9	-2.0

<sup>(1)</sup> Local and regional rail include all rail operators and Long-distance rail only includes RENFE

### 4. Special and unscheduled transport

	Passengers transported (thousands)	% variation	
		Annual	Year-to-date average
<b>SPECIAL AND UNSCHEDULED TRANSPORT</b>	52,991	-0.5	-1.5
Special	38,085	1.5	0.1
School	29,461	-0.3	-1.5
Work	8,624	8.2	5.6
Unscheduled	14,905	-5.4	-5.9

For further information see INEbase - [www.ine.es/en/](http://www.ine.es/en/) All press releases at: [www.ine.es/prensa/prensa\\_en.htm](http://www.ine.es/prensa/prensa_en.htm)

**Press Office:** Telephone numbers: 91 583 93 63 / 94 08 – Fax: 91 583 90 87 - [gpprensa@ine.es](mailto:gpprensa@ine.es)

**Information Area:** Telephone number: 91 583 91 00 – Fax: 91 583 91 58 – [www.ine.es/infoine](http://www.ine.es/infoine)