

10 July 2015

**Passenger Transport Statistics (PT)**

May 2015. *Provisional data*

**The number of passengers using public transport doesn't change in May, as compared with the same month of the previous year**

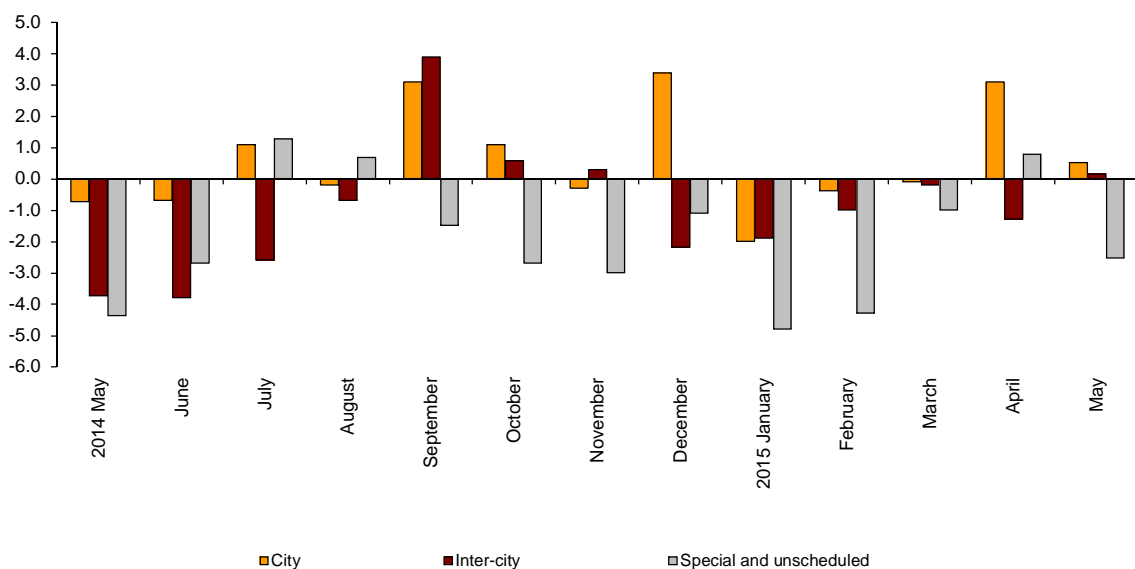
**City transport increases by 0.5% in the annual rate and inter-city transport does so by 0.2%. In turn, special and unscheduled transport decreases 2.5% in the annual rate.**

**Passengers transport evolution**

More than 406.6 million passengers used public transport in May, a similar number to that recorded in the same month of 2014.

City transport increased by 0.5% and inter-city transport did so by 0.2% in the annual rate. Within the last one, air transport was the one that recorded the greatest increase, with a 6.9% rate. In turn, special and unscheduled transport decreased by 2.5%.

**Annual evolution of passengers transport**  
Type of transport



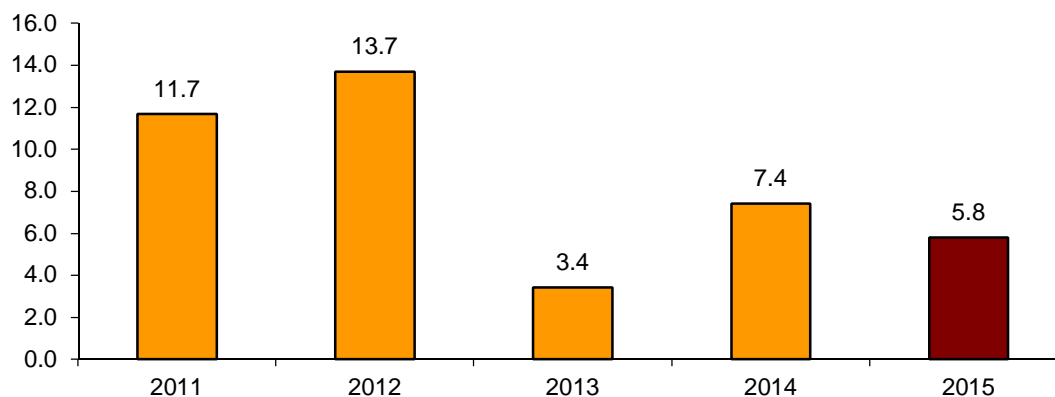
## Passengers transport annual evolution, by type of transport

|              | City | Inter-city | Special and unschedule |
|--------------|------|------------|------------------------|
| 2014 May     | -0.7 | -3.8       | -4.4                   |
| June         | -0.7 | -3.8       | -2.7                   |
| July         | 1.1  | -2.6       | 1.3                    |
| August       | -0.2 | -0.7       | 0.7                    |
| September    | 3.1  | 3.9        | -1.5                   |
| October      | 1.1  | 0.6        | -2.7                   |
| November     | -0.3 | 0.3        | -3.0                   |
| December     | 3.4  | -2.2       | -1.1                   |
| 2015 January | -2.0 | -1.9       | -4.8                   |
| February     | -0.4 | -1.0       | -4.3                   |
| March        | -0.1 | -0.2       | -1.0                   |
| April        | 3.1  | -1.3       | 0.8                    |
| May          | 0.5  | 0.2        | -2.5                   |

## Monthly rate evolution

The variation rate for the number of passengers on public transport in May 2015, as compared with April, was 5.8%. In order to contribute to the analysis and interpretation of data, the evolution of the monthly rate of public transport passengers in the last years is shown in the following chart.

**Evolution of the monthly rate  
(month-on-month variation for May as compared with April)**



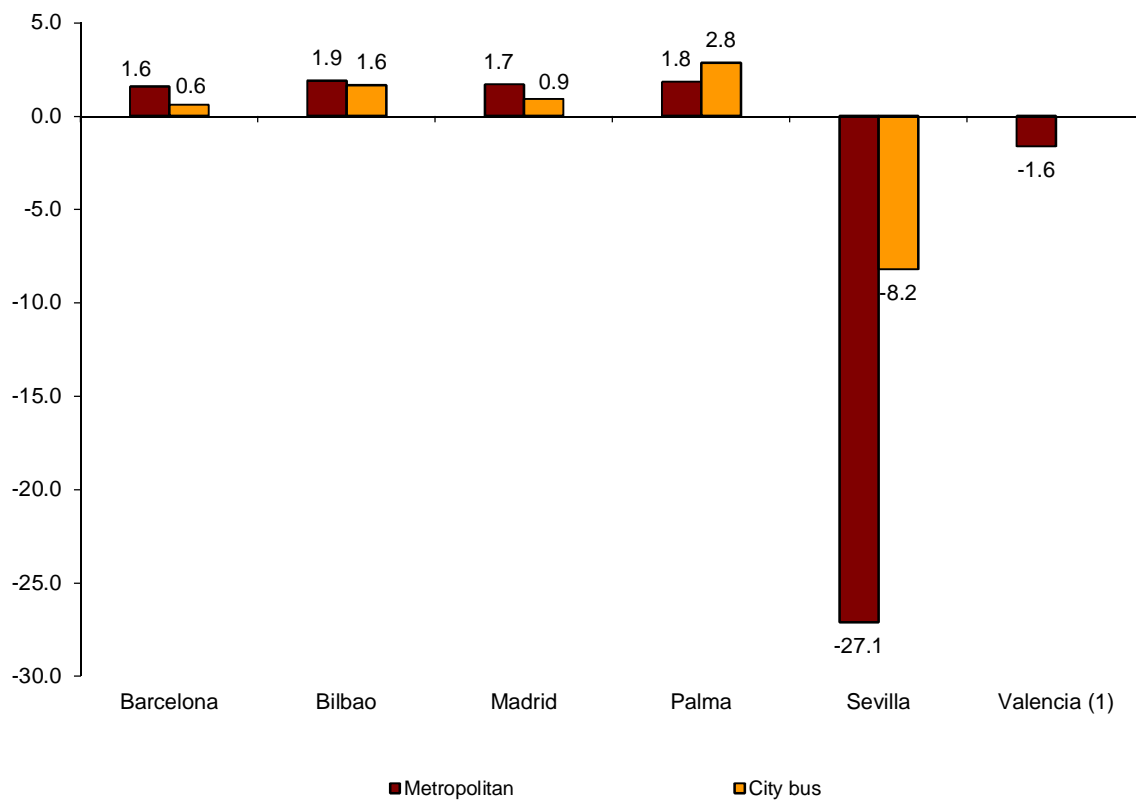
### City transport

City transport was used by more than 246.0 million passengers in May, 0.5% more than in the same month of 2014.

Metropolitan transport registered an increase of 1.0%, while bus transport increased by 0.2%.

Bus transport increased in all cities, except for Sevilla (-8.2). In turn, metropolitan transport registered the greatest decrease also in Sevilla (-27.1%).

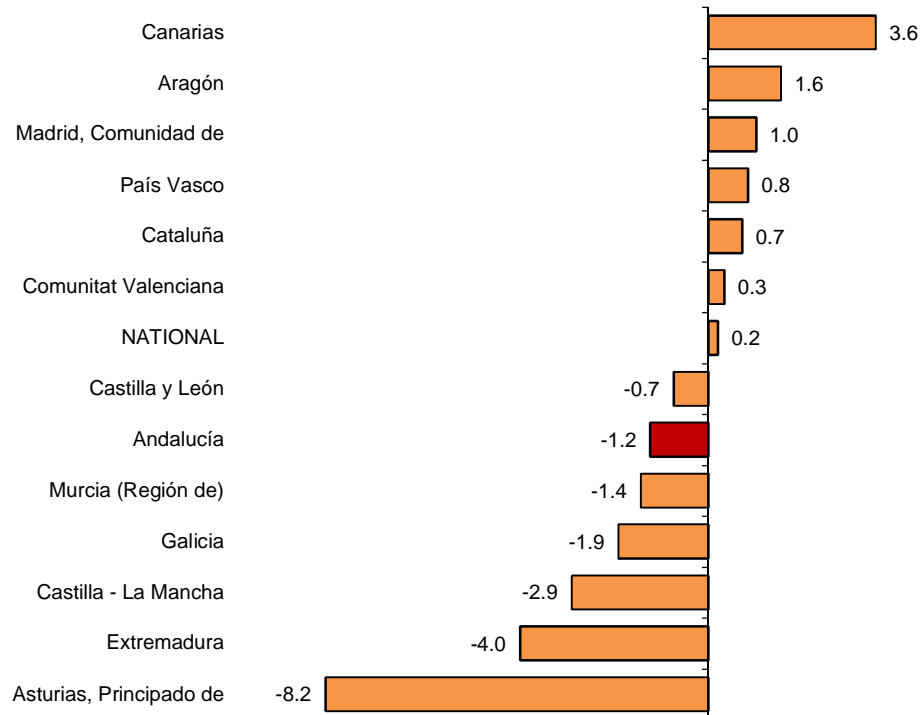
**Annual rate of city transport passengers in cities with a Metropolitan**



<sup>(1)</sup> The publication of the city transport by bus in Valencia is not allowed

The number of passengers of bus transport registered the greatest increases in Canarias (3.6%), Aragón (1.6%) and Comunidad de Madrid (1.0). In turn, the greatest decreases were recorded in Principado de Asturias (-8.2%), Extremadura (-4.0%) and Castilla-La Mancha (-2.9%).

## Annual rates of the number of passengers City transport by bus



(1) In order to protect statistical secrecy, data of the Autonomous Communities of Illes Balears, Cantabria, Comunidad Foral de Navarra and La Rioja and of the Autonomous Cities of Ceuta and Melilla are not published

## Inter-city transport

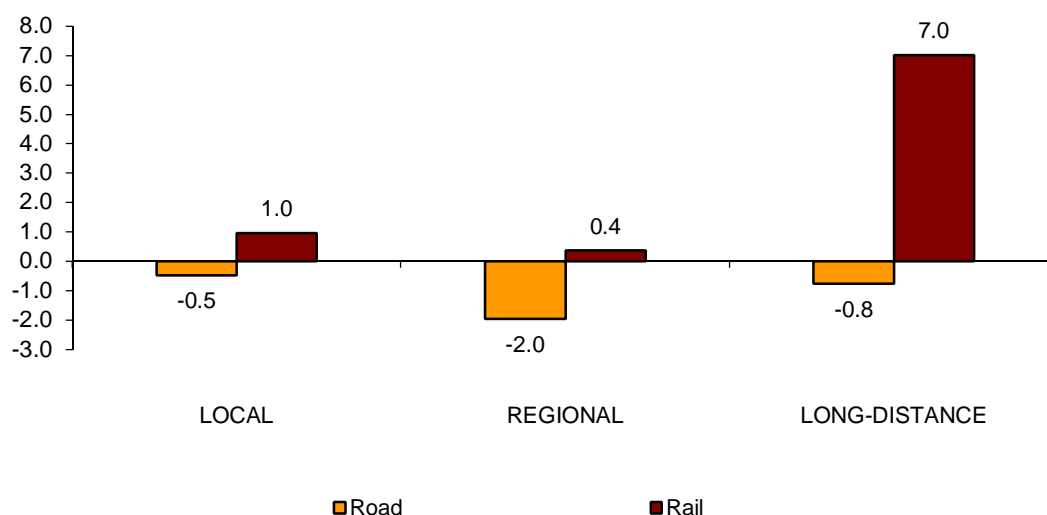
More than 109.8 million passengers used inter-city transport in May, indicating a 0.2% increase as compared with the same month of 2014.

Bus transport decreased 0.9% whereas rail transport increased 1.2%. In turn, air transport increased by 6.9% and sea transport decreased by 12.1%.

Local distance passengers decreased by 0.5% for bus transport and increased by 1.0% for rail transport. Regional distance passengers decreased 2.0% for bus transport and increased 0.4% for rail transport.

Finally, long distance passengers decreased 0.8% for bus transport and increased 7.0% for rail transport.

**Annual rate of the number of passengers  
Inter-city transport by type of transport and distance**



## Special and unscheduled transport

More than 50.7 million passengers used special and unscheduled transport in May, indicating a decrease of 2.5% in the annual rate.

The number of special transport passengers decreased 5.7%, reaching more than 32.8 million users. Within this, school transport decreased 5.6%, and work transport did so by 6.0%.

In turn, unscheduled transport increased 3.8%, as compared with the same month of 2014, reaching more than 17.8 million passengers.

## Passenger Transport Statistics

May 2015

Provisional data

### 1. Passenger transport

|                                   | Passengers transported (thousands) | % variation |                      |
|-----------------------------------|------------------------------------|-------------|----------------------|
|                                   |                                    | Annual      | Year-to-date average |
| BY TYPE OF TRANSPORT              | 406,624                            | 0.0         | -0.4                 |
| City transport                    | 246,095                            | 0.5         | 0.2                  |
| Inter-city transport              | 109,825                            | 0.2         | -0.8                 |
| Special and unscheduled transport | 50,704                             | -2.5        | -2.3                 |

### 2. City transport

|                    | Passengers transported (thousands) | % variation |                      |
|--------------------|------------------------------------|-------------|----------------------|
|                    |                                    | Annual      | Year-to-date average |
| CITY TRANSPORT     | 246,095                            | 0.5         | 0.2                  |
| Metropolitan       | 98,670                             | 1.0         | 0.8                  |
| Bus <sup>(1)</sup> | 147,425                            | 0.2         | -0.2                 |

<sup>(1)</sup> This includes trams and funiculars

## 2.1 City transport in cities with a Metropolitan

|           |                             | Passengers transported (thousands) | % variation    |                      |
|-----------|-----------------------------|------------------------------------|----------------|----------------------|
|           |                             |                                    | Annual         | Year-to-date average |
| Barcelona | City bus                    | 17,688                             | 0.6            | -0.8                 |
|           | Metropolitan                | 34,624                             | 1.6            | 2.3                  |
| Bilbao    | City bus                    | 3,279                              | 1.6            | 0.4                  |
|           | Metropolitan                | 7,740                              | 1.9            | -0.1                 |
| Madrid    | City bus                    | 36,498                             | 0.9            | -1.5                 |
|           | Metropolitan                | 49,719                             | 1.7            | 0.1                  |
| Palma     | City bus                    | 3,540                              | 2.8            | 2.4                  |
|           | Metropolitan <sup>(1)</sup> | 116                                | 1.8            | 0.3                  |
| Sevilla   | City bus                    | 6,893                              | -8.2           | 0.9                  |
|           | Metropolitan                | 1,231                              | -27.1          | 2.8                  |
| Valencia  | City bus                    | <sup>(2)</sup>                     | <sup>(2)</sup> | <sup>(2)</sup>       |
|           | Metropolitan                | 5,241                              | -1.6           | -1.3                 |

<sup>(1)</sup> Estimated data

<sup>(2)</sup> Publication thereof is not allowed

## 2.2 Urban transport by bus by Autonomous City and Community

|                             | Passengers transported (thousands) | % variation    |                      |
|-----------------------------|------------------------------------|----------------|----------------------|
|                             |                                    | Annual         | Year-to-date average |
| NATIONAL                    | 147,425                            | 0.2            | -0.2                 |
| Andalucía                   | 20,223                             | -1.2           | 2.8                  |
| Aragón                      | 10,728                             | 1.6            | 0.9                  |
| Asturias, Principado de     | 2,626                              | -8.2           | -4.0                 |
| Balears, Illes              | <sup>(1)</sup>                     | <sup>(1)</sup> | <sup>(1)</sup>       |
| Canarias                    | 4,694                              | 3.6            | 1.8                  |
| Cantabria                   | <sup>(1)</sup>                     | <sup>(1)</sup> | <sup>(1)</sup>       |
| Castilla y León             | 5,818                              | -0.7           | -1.9                 |
| Castilla - La Mancha        | 1,694                              | -2.9           | -2.8                 |
| Cataluña                    | 24,358                             | 0.7            | -0.3                 |
| Comunitat Valenciana        | 11,879                             | 0.3            | -0.5                 |
| Extremadura                 | 965                                | -4.0           | -3.2                 |
| Galicia                     | 5,137                              | -1.9           | -0.4                 |
| Madrid, Comunidad de        | 40,883                             | 1.0            | -1.5                 |
| Murcia, Región de           | 1,565                              | -1.4           | -1.2                 |
| Navarra, Comunidad Foral de | <sup>(1)</sup>                     | <sup>(1)</sup> | <sup>(1)</sup>       |
| País Vasco                  | 7,283                              | 0.8            | -0.5                 |
| Rioja, La                   | <sup>(1)</sup>                     | <sup>(1)</sup> | <sup>(1)</sup>       |
| Ceuta                       | <sup>(1)</sup>                     | <sup>(1)</sup> | <sup>(1)</sup>       |
| Melilla                     | <sup>(1)</sup>                     | <sup>(1)</sup> | <sup>(1)</sup>       |

### 3. Inter-city transport

|                             | Passengers transported (thousands) | % variation |                      |
|-----------------------------|------------------------------------|-------------|----------------------|
|                             |                                    | Annual      | Year-to-date average |
| <b>INTER-CITY TRANSPORT</b> | 109,825                            | 0.2         | -0.8                 |
| Road                        | 56,145                             | -0.9        | -0.9                 |
| Local                       | 38,753                             | -0.5        | -1.0                 |
| Regional                    | 16,110                             | -2.0        | -0.8                 |
| Long-distance               | 1,283                              | -0.8        | 0.7                  |
| Rail <sup>(1)</sup>         | 50,441                             | 1.2         | -1.0                 |
| Local rail                  | 44,937                             | 1.0         | -1.5                 |
| Regional rail               | 2,771                              | 0.4         | 0.3                  |
| Long-distance rail          | 2,733                              | 7.0         | 8.2                  |
| Air (domestic)              | 2,621                              | 6.9         | 5.6                  |
| Sea (cabotage)              | 617                                | -12.1       | -3.7                 |

<sup>(1)</sup> Local and regional rail include all rail operators and Long-distance rail only includes RENFE

### 4. Special and unscheduled transport

|  | Passengers transported (thousands) | % variation |                      |
|--|------------------------------------|-------------|----------------------|
|  |                                    | Annual      | Year-to-date average |
| <b>SPECIAL AND UNSCHEDULED TRANSPORT</b> | 50,704                             | -2.5        | -2.3                 |
| Special                                  | 32,855                             | -5.7        | -4.6                 |
| School                                   | 25,366                             | -5.6        | -4.6                 |
| Work                                     | 7,489                              | -6.0        | -4.4                 |
| Unscheduled                              | 17,849                             | 3.8         | 3.5                  |

For further information see INEbase - [www.ine.es/en/](http://www.ine.es/en/) All press releases at: [www.ine.es/prensa/prensa\\_en.htm](http://www.ine.es/prensa/prensa_en.htm)

**Press Office:** Telephone numbers: 91 583 93 63 / 94 08 – Fax: 91 583 90 87 - [gprensa@ine.es](mailto:gprensa@ine.es)

**Information Area:** Telephone number: 91 583 91 00 – Fax: 91 583 91 58 – [www.ine.es/infoine](http://www.ine.es/infoine)