

8 August 2017

**Passenger Transport Statistics (PT)**  
June 2017. *Provisional data*

**The number of passengers using public transport increases by 4.0% in June, as compared with the same month of the previous year**

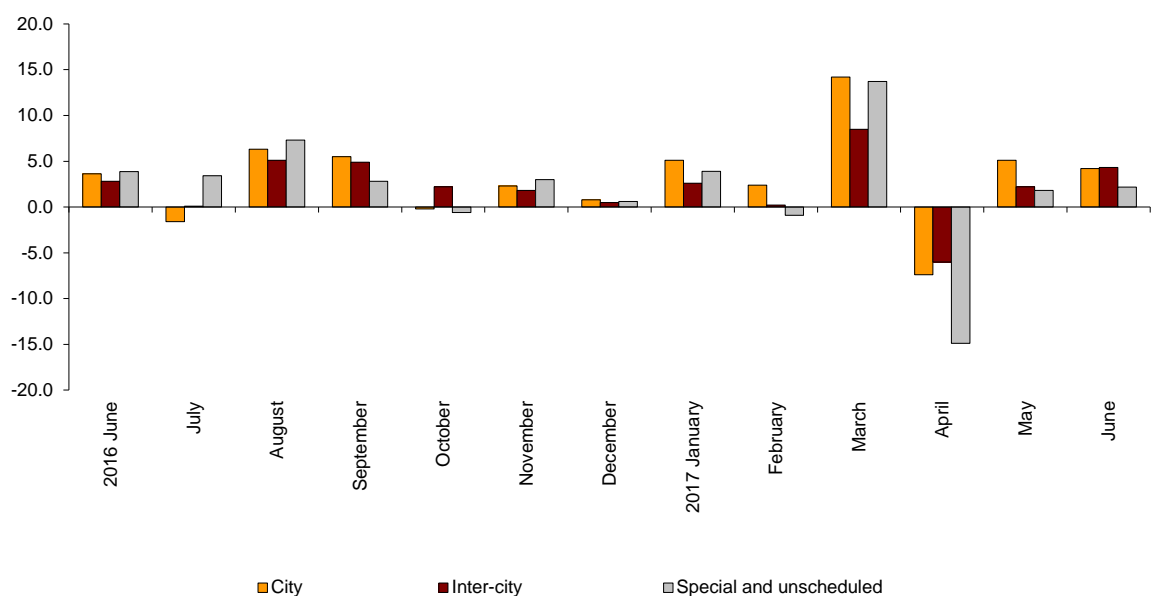
**City transport increases by 4.2% in the annual rate and inter-city transport by 4.3%**

**Evolution of passenger transport**

More than 418.7 million passengers used public transport in June, 4.0% more than in the same month of 2016.

City transport increased by 4.2% in the annual rate and inter-city transport did so by 4.3%. Within the last one, air transport was the one that recorded the greatest increase, with a 7.9% rate.

**Annual evolution of passengers transport**  
Type of transport



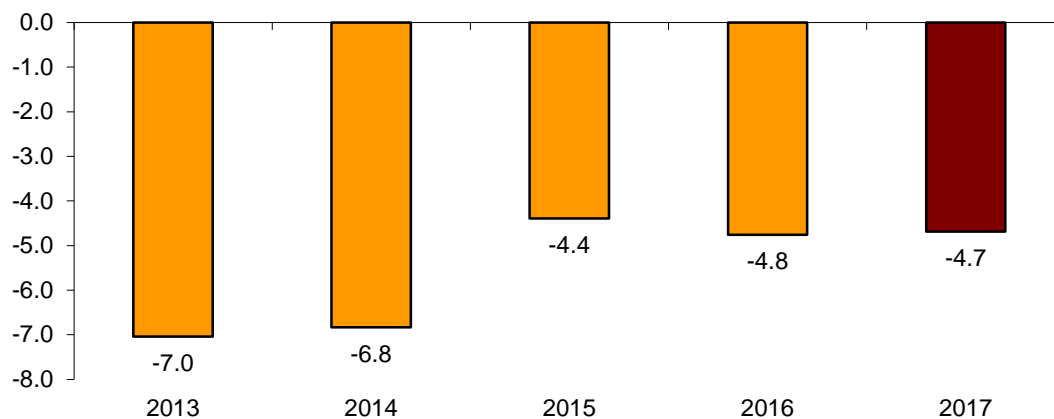
**Passengers transport annual evolution, by type of transport**

	City	Inter-city	Special and unschedule
2016 June	3.6	2.8	3.9
July	-1.6	0.1	3.4
August	6.3	5.1	7.3
September	5.5	4.9	2.8
October	-0.2	2.2	-0.6
November	2.3	1.8	3.0
December	0.8	0.5	0.6
2017 January	5.1	2.6	3.9
February	2.4	0.2	-0.9
March	14.2	8.5	13.7
April	-7.4	-6.0	-14.9
May	5.1	2.2	1.8
June	4.2	4.3	2.2

**Evolution of the monthly rate**

The variation rate of the number of passengers of public transport in June as compared with May was -4,7%. To contribute to the analysis and interpretation of data, the evolution of the monthly rate of public transport passengers in the last years is shown in the following chart.

**Evolution of the monthly rate  
(month-on-month variation for June as compared with May)**



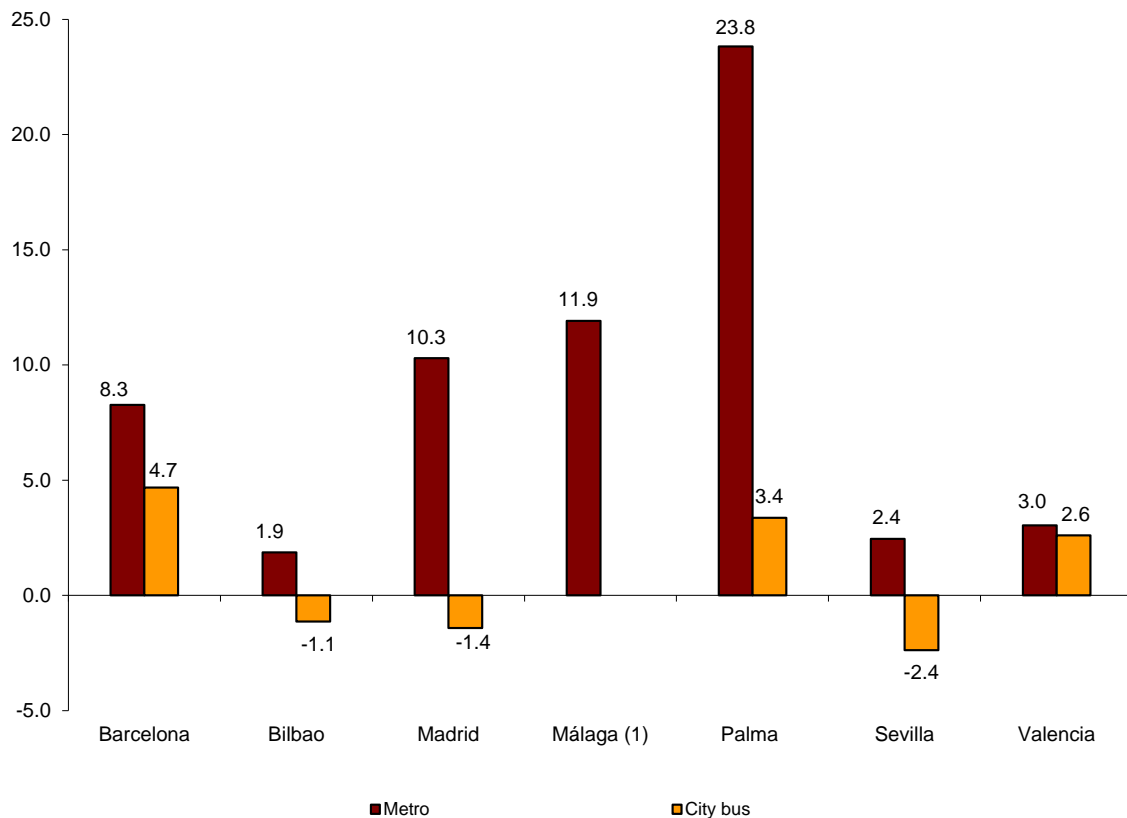
### City transport

City transport was used by more than 253.9 million passengers in June, 4.2% more than in the same month of 2016.

The subway transport increased by 8.5% and grows in all the cities. Palma's subway had the largest increase (23.8%).

Among the cities with metro, the greatest increase in bus transport was registered in Barcelona (4.7%), while the greatest decrease was registered in Sevilla (-2.4%).

**Annual rate of city transport passengers in major cities with Metro**



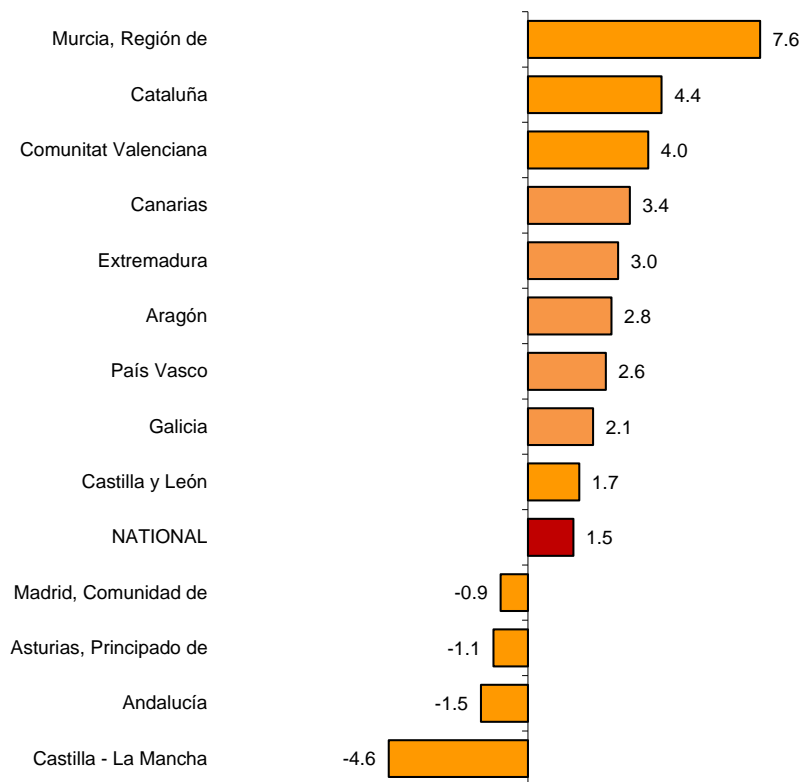
(1) The publication of the data for city transport by bus in Málaga is not allowed

City transport by bus increased by 1.5% with regards to the same month of the previous year.

The number of passengers of bus transport registered the greatest increases in Región de Murcia (7.6%), Cataluña (4.4%) and Comunitat Valenciana (4.0%).

In turn, Castilla-La Mancha (-4.6%), Andalucía (-1.5%) and Principado de Asturias (-1.1%) registered the greatest decreases.

**Annual rates of the number of passengers  
City transport by bus**



<sup>(1)</sup> To maintain statistical secrecy, data of the Autonomous Communities of Illes Balears, Cantabria, Comunidad Foral de Navarra and La Rioja and the Autonomous Cities of Ceuta and Melilla are not published.

### Inter-city transport

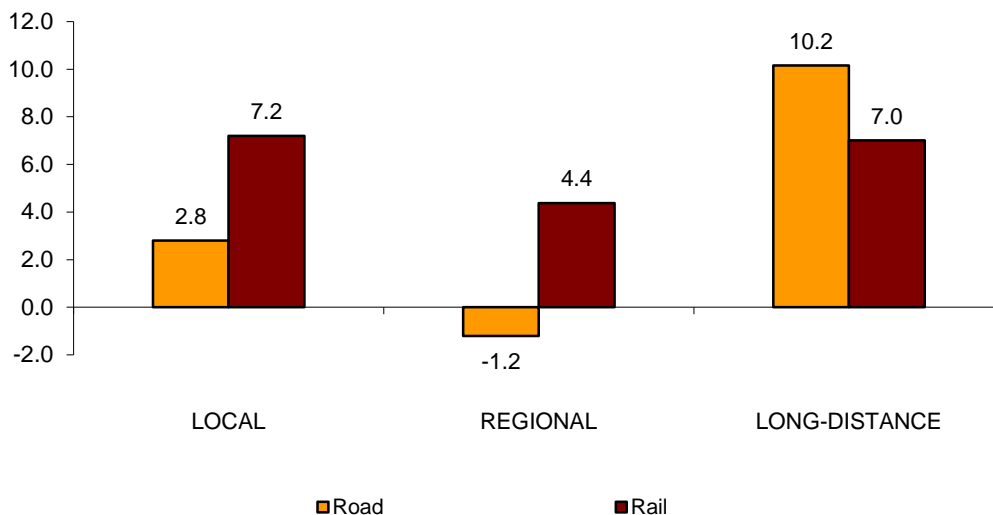
More than 115.8 million passengers used inter-city transport in June, representing a 4.3% increase as compared with the same month of 2016.

By type of transport, air transport increased by 7.9%, rail transport by 7.0%, maritime transport by 3.6%, and bus transport by 1.8%.

Cercanías increased bus transport by 2.8%, and rail transport by 7.2%. Medium distance increased by 1.2% for bus transport and increased by 4.4% for rail transport.

Finally, long distance passengers increased by 10.2% for bus transport and by 7.0% for rail transport. Within the last one, AVE (high speed railway) increased by 6.9%.

**Annual rate of the number of passengers  
Inter-city transport by type of transport and distance**



### Special and unscheduled transport

More than 48.9 million passengers used special and unscheduled transport in June, indicating an increase of 2.2% in the annual rate.

The number of special transport passengers decreased by 1.1%, reaching more than 27.0 million users. Within this, school transport increased by 2.4%, while work transport decreased by 10.7%.

In turn, unscheduled transport increased 6.5%, as compared with the same month of 2016, reaching more than 21.8 million passengers.

## Passenger Transport Statistics

June 2017

Provisional data

### 1. Passenger transport

	Passengers transported (thousands)	% variation	
		Annual	Year-to-date average
BY TYPE OF TRANSPORT	418,772	4.0	2.9
City transport	253,930	4.2	3.8
Inter-city transport	115,897	4.3	1.9
Special and unscheduled transport	48,944	2.2	0.6

### 2. City transport

	Passengers transported (thousands)	% variation	
		Annual	Year-to-date average
CITY TRANSPORT	253,930	4.2	3.8
Metro	102,455	8.5	5.2
Bus <sup>(1)</sup>	151,475	1.5	2.9

<sup>(1)</sup> This includes trams and funiculars

## 2.1 City transport in major cities with Metro

		Passengers transported (thousands)	% variation	
			Annual	Year-to-date average
Barcelona	City bus	19,129	4.7	6.3
	Metro	33,215	8.3	5.8
Bilbao	City bus	3,117	-1.1	-0.3
	Metro	7,553	1.9	0.8
Madrid	City bus	37,393	-1.4	0.7
	Metro	54,633	10.3	5.7
Málaga	City bus	(1)	(1)	(1)
	Metro	469	11.9	9.5
Palma	City bus	3,853	3.4	2.9
	Metro	64	23.8	4.3
Sevilla	City bus	6,187	-2.4	-0.2
	Metro	1,121	2.4	5.8
Valencia	City bus	8,517	2.6	5.7
	Metro	5,400	3.0	2.8

(1) Publication thereof is not allowed

## 2.2 Urban transport by bus by Autonomous Cities and Communities

	Passengers transported (thousands)	% variation	
		Annual	Year-to-date average
NATIONAL	151,475	1.5	2.9
Andalucía	18,287	-1.5	0.7
Aragón	10,362	2.8	9.2
Asturias, Principado de	2,676	-1.1	-1.5
Balears, Illes	(1)	(1)	(1)
Canarias	4,909	3.4	3.6
Cantabria	(1)	(1)	(1)
Castilla y León	5,750	1.7	0.5
Castilla - La Mancha	1,578	-4.6	-2.2
Cataluña	26,292	4.4	5.2
Comunitat Valenciana	13,219	4.0	4.5
Extremadura	945	3.0	2.2
Galicia	5,185	2.1	1.5
Madrid, Comunidad de	42,815	-0.9	1.6
Murcia, Región de	1,515	7.6	5.3
Navarra, Comunidad Foral de	(1)	(1)	(1)
País Vasco	7,578	2.6	2.2
Rioja, La	(1)	(1)	(1)
Ceuta	(1)	(1)	(1)
Melilla	(1)	(1)	(1)

### 3. Inter-city transport

	Passengers transported (thousands)	% variation	
		Annual	Year-to-date average
<b>INTER-CITY TRANSPORT</b>	115,897	4.3	1.9
Road	59,027	1.8	0.2
Local	41,187	2.8	0.1
Regional	16,333	-1.2	0.0
Long-distance	1,506	10.2	4.6
Rail <sup>(1)</sup>	52,547	7.0	3.6
Local rail	46,857	7.2	3.7
Regional rail	2,689	4.4	1.7
Long-distance rail	3,001	7.0	4.7
AVE train	1,942	6.9	4.8
Rest of long-distance rail	1,059	7.1	4.5
Air (domestic)	3,347	7.9	6.2
Maritime (cabotage)	977	3.6	4.8

<sup>(1)</sup> Local rail includes all rail operators and regional and long-distance rail include only RENFE

### 4. Special and unscheduled transport

	Passengers transported (thousands)	% variation	
		Annual	Year-to-date average
<b>SPECIAL AND UNSCHEDULED TRANSPORT</b>	48,944	2.2	0.6
Special	27,048	-1.1	-2.3
School	20,468	2.4	0.0
Work	6,580	-10.7	-9.6
Unscheduled	21,896	6.5	6.4

For further information see INEbase - [www.ine.es/en/](http://www.ine.es/en/) All press releases at: [www.ine.es/prensa/prensa\\_en.htm](http://www.ine.es/prensa/prensa_en.htm)

**Press Office:** Telephone numbers: 91 583 93 63 / 94 08 – Fax: 91 583 90 87 - [gprensa@ine.es](mailto:gprensa@ine.es)

**Information Area:** Telephone number: 91 583 91 00 – Fax: 91 583 91 58 – [www.ine.es/infoine](http://www.ine.es/infoine)