

**Passenger Transport Statistics (PT)**  
July 2015. *Provisional data*

**The number of passengers using public transport increases by 2.0% in July, as compared with the same month of the previous year**

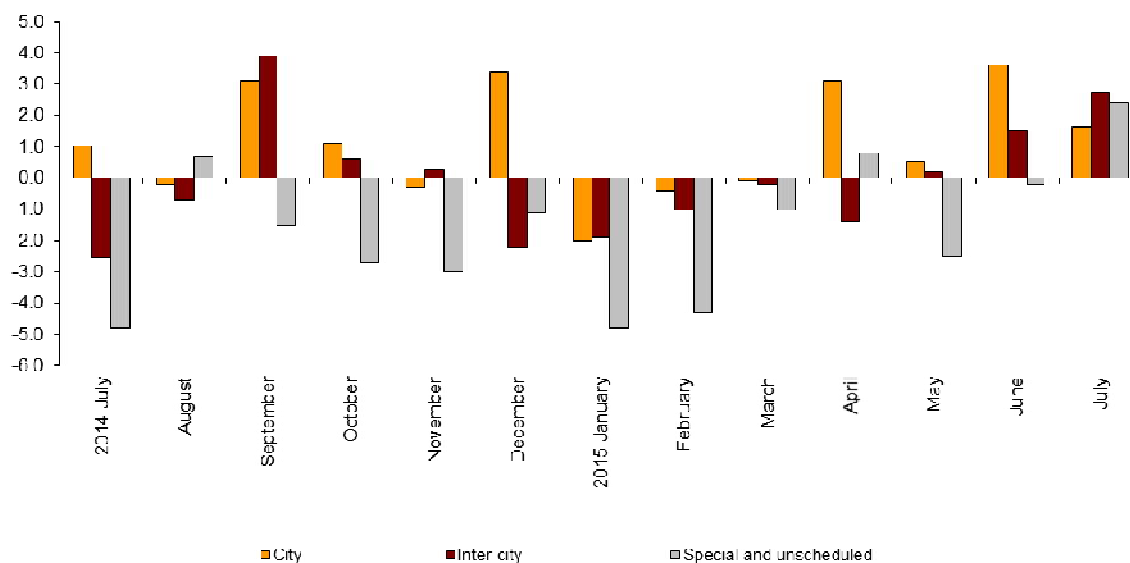
**City transport increases by 1.6% in the annual rate and inter-city transport does so by 2.7%**

**Passengers transport evolution**

More than 353.3 million passengers used public transport in July, 2.0% more than in the same month of 2014.

City transport increased by 1.6% in the annual rate and inter-city transport did so by 2.7%. Within the last one, rail transport was the one that recorded the greatest increase, with a 6.6% rate.

**Annual evolution of passengers transport**  
Type of transport



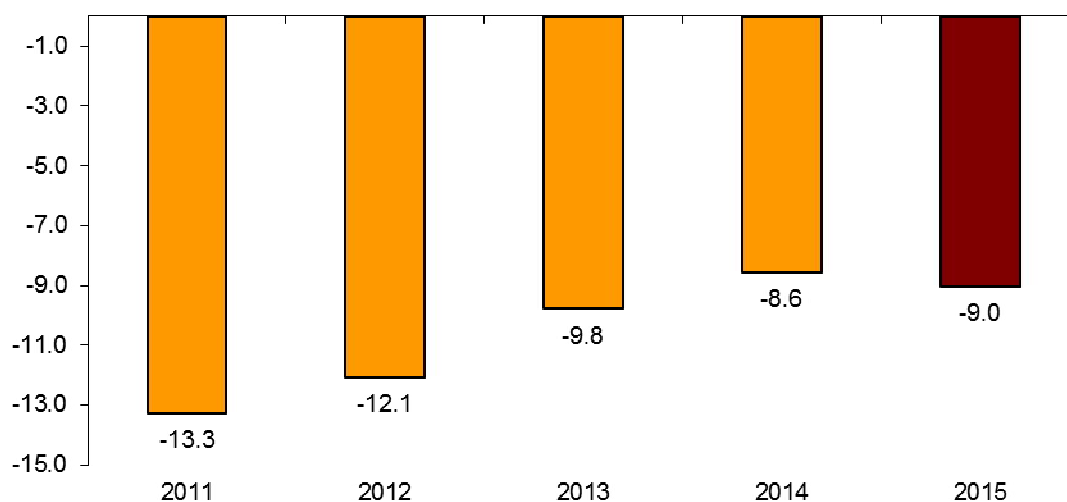
## Passengers transport annual evolution, by type of transport

|              | City | Inter-city | Special and unscheduled |
|--------------|------|------------|-------------------------|
| 2014 July    | 1.1  | -2.5       | -4.8                    |
| August       | -0.2 | -0.7       | 0.7                     |
| September    | 3.1  | 3.9        | -1.5                    |
| October      | 1.1  | 0.6        | -2.7                    |
| November     | -0.3 | 0.3        | -3.0                    |
| December     | 3.4  | -2.2       | -1.1                    |
| 2015 January | -2.0 | -1.9       | -4.8                    |
| February     | -0.4 | -1.0       | -4.3                    |
| March        | -0.1 | -0.2       | -1.0                    |
| April        | 3.1  | -1.4       | 0.8                     |
| May          | 0.5  | 0.2        | -2.5                    |
| June         | 3.6  | 1.5        | -0.2                    |
| July         | 1.6  | 2.7        | 2.4                     |

## Monthly rate evolution

The variation rate for the number of passengers on public transport in July 2015, as compared with June, was  $-9.0\%$ . In order to contribute to the analysis and interpretation of data, the evolution of the monthly rate of public transport passengers in the last years is shown in the following chart.

**Evolution of the monthly rate  
(month-on-month variation for July as compared with June)**



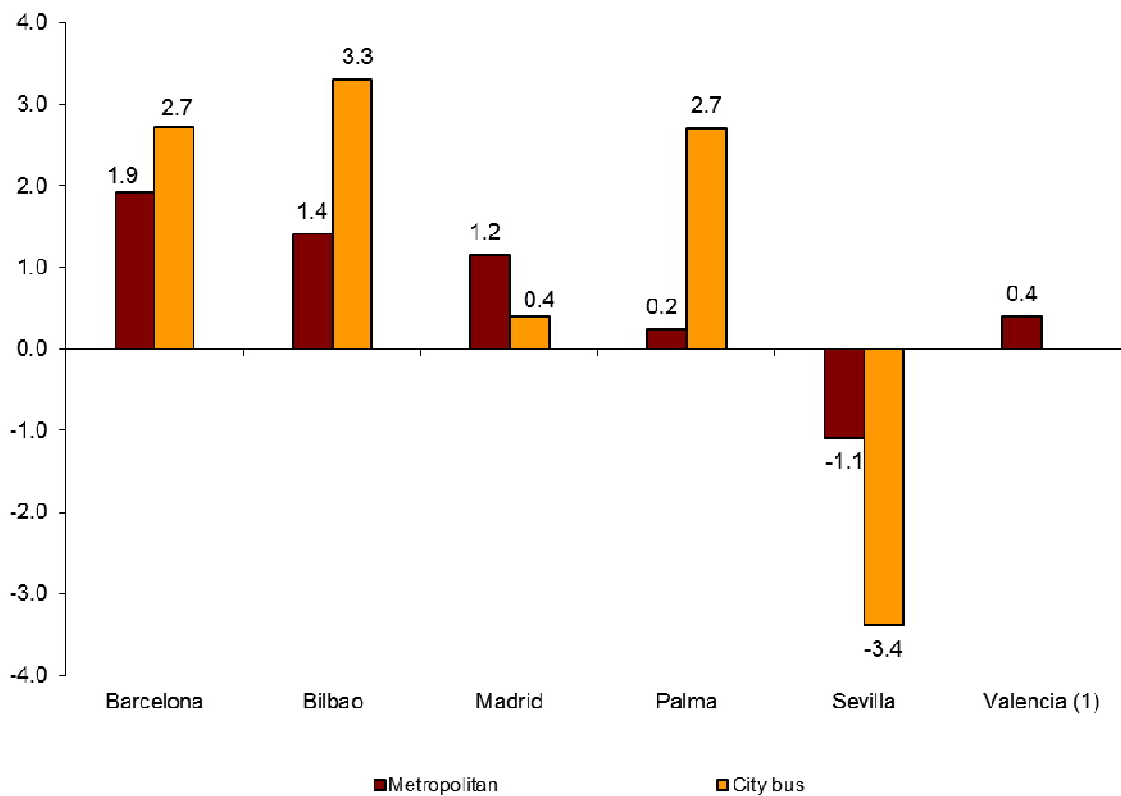
## City transport

City transport was used by more than 220.3 million passengers in July, 1.6% more than in the same month of 2014.

Metropolitan transport registered an increase of 1.4%, while bus transport increased by 1.8%.

Metropolitan transport and bus transport increased in all cities, except in Sevilla, where they decreased 3.4% and 1.1%, respectively.

**Annual rate of city transport passengers in cities with a Metropolitan**

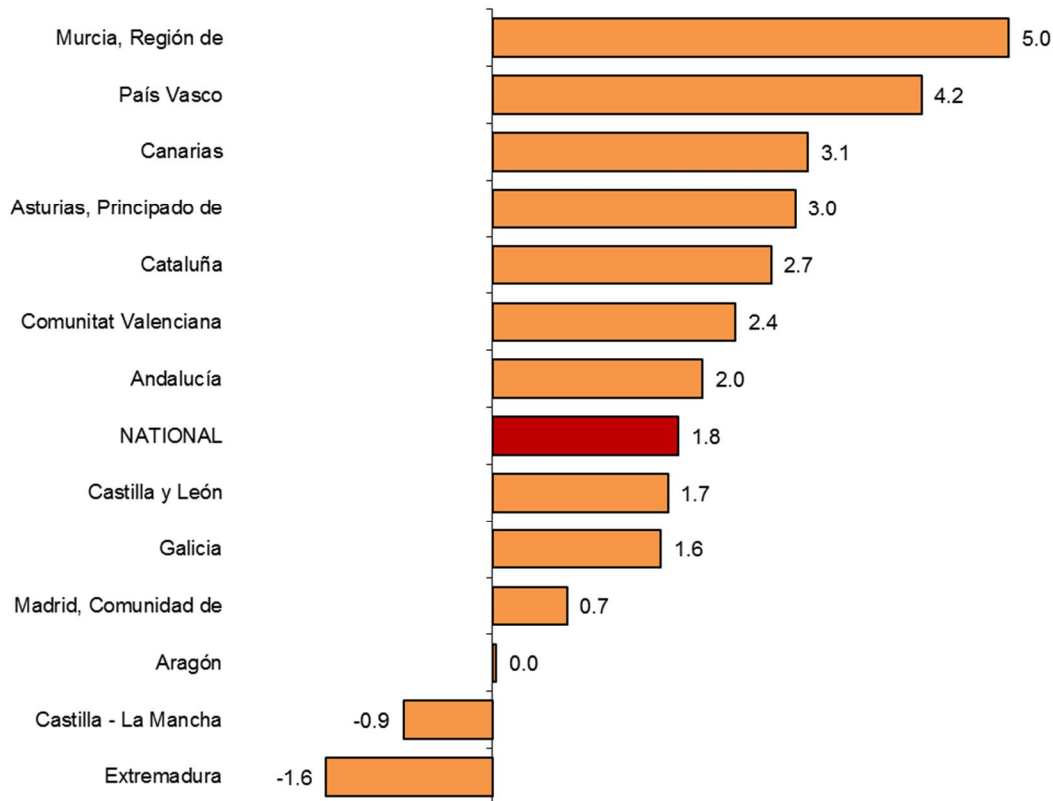


<sup>(1)</sup> The publication of the city transport by bus in Valencia is not allowed

The number of passengers of bus transport registered the greatest increases in Región de Murcia (5.0%), País Vasco (4.2%) and Canarias (3.1%).

In turn, Extremadura (-1.6%) and Castilla-La Mancha (-0.9) recorded decreases.

## Annual rates of the number of passengers City transport by bus



(1) In order to protect statistical secrecy, data of the Autonomous Communities of Illes Balears, Cantabria, Comunidad Foral de Navarra and La Rioja and of the Autonomous Cities of Ceuta and Melilla are not published

## Inter-city transport

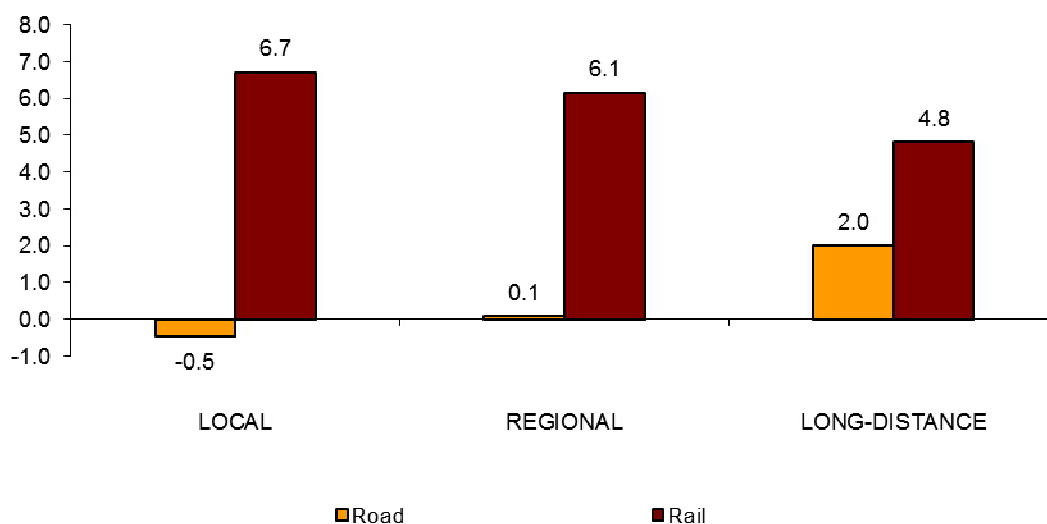
More than 108.5 million passengers used inter-city transport in July, indicating a 2.7% increase as compared with the same month of 2014.

Bus transport decreased 0.2% whereas rail transport increased 6.6%. In turn, air transport increased by 6.5%.

Local distance passengers decreased by 0.5% for bus transport and increased by 6.7% for rail transport. Regional distance passengers increased 0.1% for bus transport and increased 6.1% for rail transport.

Finally, long distance passengers increased 2.0% for bus transport and increased 4.8% for rail transport.

### Annual rate of the number of passengers Inter-city transport by type of transport and distance



## Special and unscheduled transport

More than 24.4 million passengers used special and unscheduled transport in July, indicating an increase of 2.4% in the annual rate.

The number of special transport passengers decreased 0.6%, reaching more than 8.5 million users. Within this, school transport decreased 4.3%, and work transport did so by 0.2%.

In turn, unscheduled transport increased 4.1%, as compared with the same month of 2014, reaching more than 15.9 million passengers.

## Passenger Transport Statistics

July 2015

Provisional data

### 1. Passenger transport

|                                   | Passengers transported (thousands) | % variation |                      |
|-----------------------------------|------------------------------------|-------------|----------------------|
|                                   |                                    | Annual      | Year-to-date average |
| BY TYPE OF TRANSPORT              | 353,325                            | 2.0         | 0.4                  |
| City transport                    | 220,364                            | 1.6         | 0.9                  |
| Inter-city transport              | 108,542                            | 2.7         | 0.0                  |
| Special and unscheduled transport | 24,419                             | 2.4         | -1.6                 |

### 2. City transport

|                    | Passengers transported (thousands) | % variation |                      |
|--------------------|------------------------------------|-------------|----------------------|
|                    |                                    | Annual      | Year-to-date average |
| CITY TRANSPORT     | 220,364                            | 1.6         | 0.9                  |
| Metropolitan       | 88,167                             | 1.4         | 1.3                  |
| Bus <sup>(1)</sup> | 132,198                            | 1.8         | 0.6                  |

<sup>(1)</sup> This includes trams and funiculars

## 2.1 City transport in cities with a Metropolitan

|           |                             | Passengers transported (thousands) | % variation    |                      |
|-----------|-----------------------------|------------------------------------|----------------|----------------------|
|           |                             |                                    | Annual         | Year-to-date average |
| Barcelona | City bus                    | 16,981                             | 2.7            | 0.6                  |
|           | Metropolitan                | 33,061                             | 1.9            | 2.6                  |
| Bilbao    | City bus                    | 2,642                              | 3.3            | 1.5                  |
|           | Metropolitan                | 6,495                              | 1.4            | 0.6                  |
| Madrid    | City bus                    | 30,246                             | 0.4            | -0.8                 |
|           | Metropolitan                | 43,144                             | 1.2            | 0.6                  |
| Palma     | City bus                    | 3,796                              | 2.7            | 3.0                  |
|           | Metropolitan <sup>(1)</sup> | 42                                 | 0.2            | 0.5                  |
| Sevilla   | City bus                    | 5,122                              | -3.4           | 0.4                  |
|           | Metropolitan                | 815                                | -1.1           | 2.7                  |
| Valencia  | City bus                    | <sup>(2)</sup>                     | <sup>(2)</sup> | <sup>(2)</sup>       |
|           | Metropolitan                | 4,609                              | 0.4            | -0.5                 |

<sup>(1)</sup> Estimated data

<sup>(2)</sup> Publication thereof is not allowed

## 2.2 Urban transport by bus by Autonomous City and Communiy

|                             | Passengers transported (thousands) | % variation    |                      |
|-----------------------------|------------------------------------|----------------|----------------------|
|                             |                                    | Annual         | Year-to-date average |
| NATIONAL                    | 132,198                            | 1.8            | 0.6                  |
| Andalucía                   | 17,041                             | 2.0            | 2.9                  |
| Aragón                      | 8,896                              | 0.0            | 1.2                  |
| Asturias, Principado de     | 2,768                              | 3.0            | -2.3                 |
| Balears, Illes              | <sup>(1)</sup>                     | <sup>(1)</sup> | <sup>(1)</sup>       |
| Canarias                    | 4,489                              | 3.1            | 2.3                  |
| Cantabria                   | <sup>(1)</sup>                     | <sup>(1)</sup> | <sup>(1)</sup>       |
| Castilla y León             | 4,954                              | 1.7            | -0.8                 |
| Castilla - La Mancha        | 1,356                              | -0.9           | -1.9                 |
| Cataluña                    | 23,312                             | 2.7            | 1.0                  |
| Comunitat Valenciana        | 11,116                             | 2.4            | 0.5                  |
| Extremadura                 | 761                                | -1.6           | -2.5                 |
| Galicia                     | 4,960                              | 1.6            | 0.5                  |
| Madrid, Comunidad de        | 33,982                             | 0.7            | -0.8                 |
| Murcia, Región de           | 1,150                              | 5.0            | 0.5                  |
| Navarra, Comunidad Foral de | <sup>(1)</sup>                     | <sup>(1)</sup> | <sup>(1)</sup>       |
| País Vasco                  | 6,697                              | 4.2            | 1.0                  |
| Rioja, La                   | <sup>(1)</sup>                     | <sup>(1)</sup> | <sup>(1)</sup>       |
| Ceuta                       | <sup>(1)</sup>                     | <sup>(1)</sup> | <sup>(1)</sup>       |
| Melilla                     | <sup>(1)</sup>                     | <sup>(1)</sup> | <sup>(1)</sup>       |

<sup>(1)</sup> In order to maintain statistical confidentiality, data from Illes Balears, Cantabria, Comunidad Foral de Navarra, La Rioja, Ceuta and Melilla will not be published.

### 3. Inter-city transport

|                               | Passengers transported (thousands) | % variation |                      |
|-------------------------------|------------------------------------|-------------|----------------------|
|                               |                                    | Annual      | Year-to-date average |
| <b>INTER-CITY TRANSPORT</b>   | 108,542                            | 2.7         | 0.0                  |
| Road                          | 57,491                             | -0.2        | -0.6                 |
| Local                         | 38,149                             | -0.5        | -0.7                 |
| Regional                      | 17,672                             | 0.1         | -0.5                 |
| Long-distance                 | 1,671                              | 2.0         | 0.6                  |
| Rail <sup>(1)</sup>           | 46,923                             | 6.6         | 0.6                  |
| Local rail                    | 41,308                             | 6.7         | 0.1                  |
| Regional rail                 | 2,715                              | 6.1         | 1.3                  |
| Long-distance rail            | 2,900                              | 4.8         | 7.2                  |
| Air (domestic)                | 3,234                              | 6.5         | 5.5                  |
| Sea (cabotage) <sup>(2)</sup> | 894                                | -6.9        | -4.9                 |

<sup>(1)</sup> Local and regional rail include all rail operators and Long-distance rail only includes RENFE

<sup>(2)</sup> Estimated data

### 4. Special and unscheduled transport

|  | Passengers transported (thousands) | % variation |                      |
|--|------------------------------------|-------------|----------------------|
|  |                                    | Annual      | Year-to-date average |
| <b>SPECIAL AND UNSCHEDULED TRANSPORT</b> | 24,419                             | 2.4         | -1.6                 |
| Special                                  | 8,518                              | -0.6        | -4.1                 |
| School                                   | 707                                | -4.3        | -4.4                 |
| Work                                     | 7,811                              | -0.2        | -3.4                 |
| Unscheduled                              | 15,900                             | 4.1         | 3.6                  |

For further information see INEbase - [www.ine.es/en/](http://www.ine.es/en/) All press releases at: [www.ine.es/prensa/prensa\\_en.htm](http://www.ine.es/prensa/prensa_en.htm)

**Press Office:** Telephone numbers: 91 583 93 63 / 94 08 – Fax: 91 583 90 87 - [gprensa@ine.es](mailto:gprensa@ine.es)

**Information Area:** Telephone number: 91 583 91 00 – Fax: 91 583 91 58 – [www.ine.es/infoine](http://www.ine.es/infoine)