

11 September 2017

Passenger Transport Statistics (PT)
July 2017. *Provisional data*

The number of passengers using public transport increases by 3.7% in July, as compared with the same month of the previous year

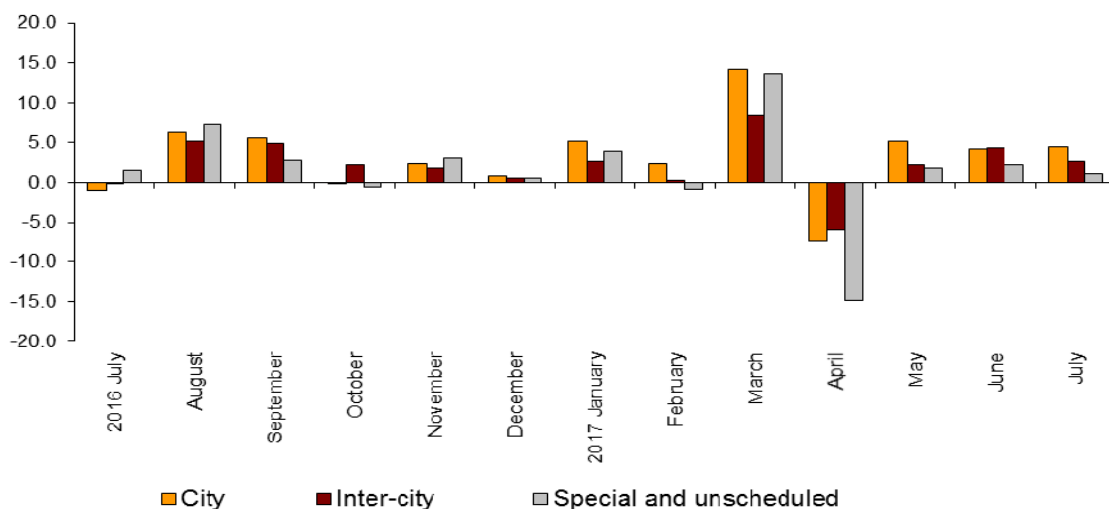
City transport increases by 4.5% in the annual rate and inter-city transport by 2.7%

Evolution of passenger transport

More than 364.1 million passengers used public transport in July, 3.7% more than in the same month of 2016.

City transport increased by 4.5% in the annual rate and inter-city transport did so by 2.7%. Within the last one, air transport was the one that recorded the greatest increase, with a 7.8% rate.

Annual evolution of passengers transport
Type of transport



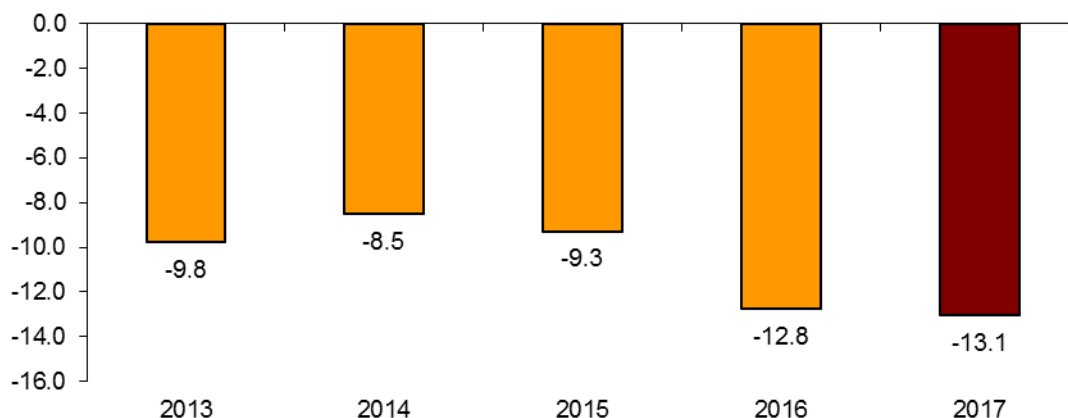
Passengers transport annual evolution, by type of transport

	City	Inter-city	Special and unscheduled
2016 July	-1.1	0.0	1.5
August	6.3	5.1	7.3
September	5.5	4.9	2.8
October	-0.2	2.2	-0.6
November	2.3	1.8	3.0
December	0.8	0.5	0.6
2017 January	5.1	2.6	3.9
February	2.4	0.2	-0.9
March	14.2	8.5	13.7
April	-7.4	-6.0	-14.9
May	5.1	2.2	1.8
June	4.2	4.3	2.2
July	4.5	2.7	1.1

Evolution of the monthly rate

The variation rate of the number of passengers of public transport in July as compared with June was -13.1%. To contribute to the analysis and interpretation of data, the evolution of the monthly rate of public transport passengers in the last years is shown in the following chart.

**Evolution of the monthly rate
(month-on-month variation for July as compared with June)**



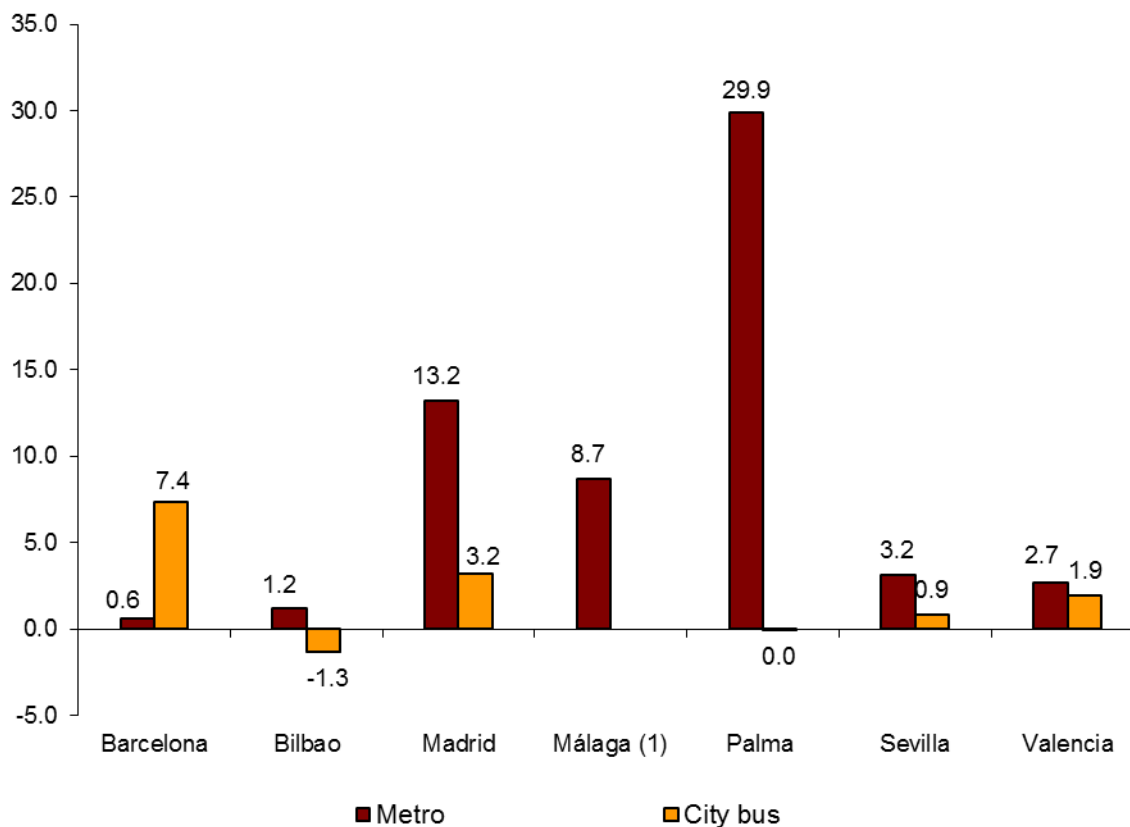
City transport

City transport was used by more than 226.9 million passengers in July, 4.5% more than in the same month of 2016.

The subway transport increased by 6.9% and grows in all the cities. Palma's subway had the largest increase (29.9%).

Among the cities with metro, the greatest increase in bus transport was registered in Barcelona (7.4%), while the only decrease was registered in Bilbao (-1.3%).

Annual rate of city transport passengers in major cities with Metro



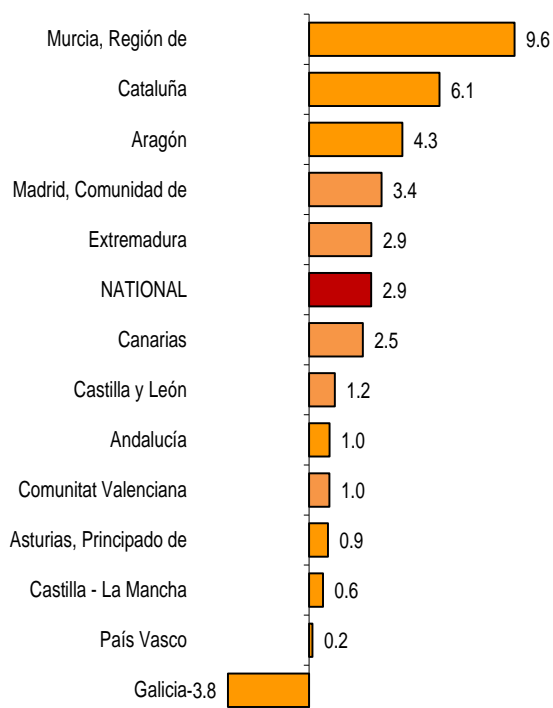
(1) The publication of the city transport by bus is not allowed

City transport by bus increased by 2.9% as compared with the same month of the previous year.

The number of passengers of bus transport registered the greatest increases in Región de Murcia (9.6%), Cataluña (6.1%) and Aragón (4.3%).

The only decrease was registered in Galicia (-3.8%).

**Annual rates of the number of passengers
City transport by bus**



(1) Due to statistical confidentiality, disaggregated data of the Autonomous Communities of Illes Balears, Cantabria, Comunidad Foral de Navarra and la Rioja and of the Autonomous Cities of Ceuta and Melilla are not published.

Inter-city transport

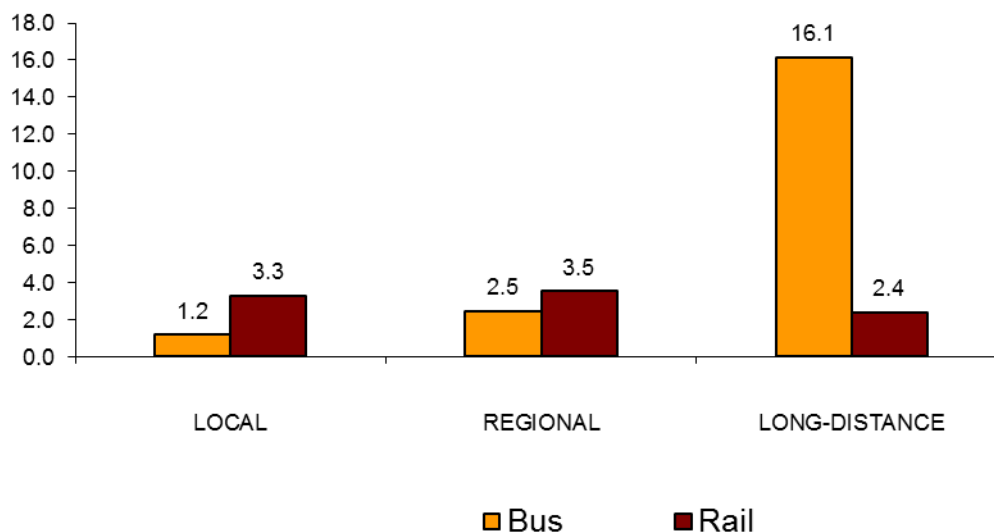
More than 111.6 million passengers used inter-city transport in July, representing a 2.7% increase as compared with the same month of 2016.

By type of transport, air transport increased by 7.8%, rail transport by 3.2%, bus transport by 2.0% and maritime transport by 0.4%.

Cercanías increased bus transport by 1.2%, and rail transport by 3.3%. Regional distance passengers increased by 2.5% for bus transport and 3.5% for rail transport.

Finally, long distance passengers increased by 16.1% for bus transport and by 2.4% for rail transport. Within the last one, AVE (high speed railway) increased by 2.4%.

**Annual rate of the number of passengers
Inter-city transport by type of transport and distance**



Special and unscheduled transport

More than 25.5 million passengers used special and unscheduled transport in July, indicating an increase of 1.1% in the annual rate.

The number of special transport passengers decreased by 8.0%, reaching more than 6.9 million users. Within this, school transport increased by 6.9%, while work transport decreased by 9.4%.

In turn, unscheduled transport increased 5.0%, as compared with the same month of 2016, reaching more than 18.5 million passengers.

Passenger Transport Statistics

July 2017

Provisional data

1. Passenger transport

	Passengers transported (thousands)	% variation	
		Annual	Year-to-date average
BY TYPE OF TRANSPORT	364,105	3.7	3.0
City transport	226,928	4.5	3.9
Inter-city transport	111,648	2.7	2.0
Special and unscheduled transport	25,529	1.1	0.6

2. City transport

	Passengers transported (thousands)	% variation	
		Annual	Year-to-date average
CITY TRANSPORT	226,928	4.5	3.9
Metro	90,273	6.9	5.4
Bus ⁽¹⁾	136,656	2.9	2.9

⁽¹⁾ This includes trams and funiculars

2.1 City transport in major cities with Metro

		Passengers transported (thousands)	% variation	
			Annual	Year-to-date average
Barcelona	City bus	18,236	7.4	6.4
	Metro	32,038	0.6	5.1
Bilbao	City bus	2,490	-1.3	-0.4
	Metro	6,242	1.2	0.9
Madrid	City bus	33,372	3.2	1.0
	Metro	46,000	13.2	6.6
Málaga	City bus	(1)	(1)	(1)
	Metro	388	8.7	9.4
Palma	City bus	3,851	0.0	2.4
	Metro	35	29.9	6.0
Sevilla	City bus	4,913	0.9	-0.1
	Metro	825	3.2	5.6
Valencia	City bus	7,420	1.9	5.2
	Metro	4,745	2.7	2.8

(1) Publication thereof is not allowed

2.2 Urban transport by bus by Autonomous Cities and Communities

	Passengers transported (thousands)	% variation	
		Annual	Year-to-date average
NATIONAL	136,656	2.9	2.9
Andalucía	16,272	1.0	0.8
Aragón	8,709	4.3	8.6
Asturias, Principado de	2,618	0.9	-1.2
Balears, Illes	(1)	(1)	(1)
Canarias	4,598	2.5	3.4
Cantabria	(1)	(1)	(1)
Castilla y León	4,814	1.2	0.6
Castilla - La Mancha	1,290	0.6	-1.9
Cataluña	24,819	6.1	5.4
Comunitat Valenciana	11,595	1.0	4.0
Extremadura	742	2.9	2.3
Galicia	4,620	-3.8	0.8
Madrid, Comunidad de	37,714	3.4	1.8
Murcia, Región de	1,213	9.6	5.7
Navarra, Comunidad Foral de	(1)	(1)	(1)
País Vasco	6,785	0.2	1.9
Rioja, La	(1)	(1)	(1)
Ceuta	(1)	(1)	(1)
Melilla	(1)	(1)	(1)

3. Inter-city transport

	Passengers transported (thousands)	% variation	
		Annual	Year-to-date average
INTER-CITY TRANSPORT	111,648	2.7	2.0
Bus	58,440	2.0	0.5
Local	39,286	1.2	0.3
Regional	17,204	2.5	0.4
Long-distance	1,949	16.1	6.7
Rail ⁽¹⁾	48,154	3.2	3.6
Local rail	42,327	3.3	3.6
Regional rail	2,720	3.5	1.9
Long-distance rail	3,107	2.4	4.3
AVE train	1,884	2.4	4.5
Rest of long-distance rail	1,223	2.3	4.1
Air (domestic)	3,670	7.8	6.5
Maritime (cabotage)	1,385	0.4	3.7

⁽¹⁾ Local rail includes all rail operators and regional and long-distance rail include only RENFE

4. Special and unscheduled transport

	Passengers transported (thousands)	% variation	
		Annual	Year-to-date average
SPECIAL AND UNSCHEDULED TRANSPORT	25,529	1.1	0.6
Special	6,961	-8.0	-2.5
School	685	6.9	0.0
Work	6,276	-9.4	-9.6
Unscheduled	18,568	5.0	6.2

For further information see INEbase - www.ine.es/en/ All press releases at: www.ine.es/prensa/prensa_en.htm

Press Office: Telephone numbers: 91 583 93 63 / 94 08 – Fax: 91 583 90 87 - gprensa@ine.es

Information Area: Telephone number: 91 583 91 00 – Fax: 91 583 91 58 – www.ine.es/infoine