

Passenger Transport Statistics (PT)

August 2014. *Provisional data*

The number of passengers using public transport decreases by 0.3% in August, as compared with the same month of the previous year

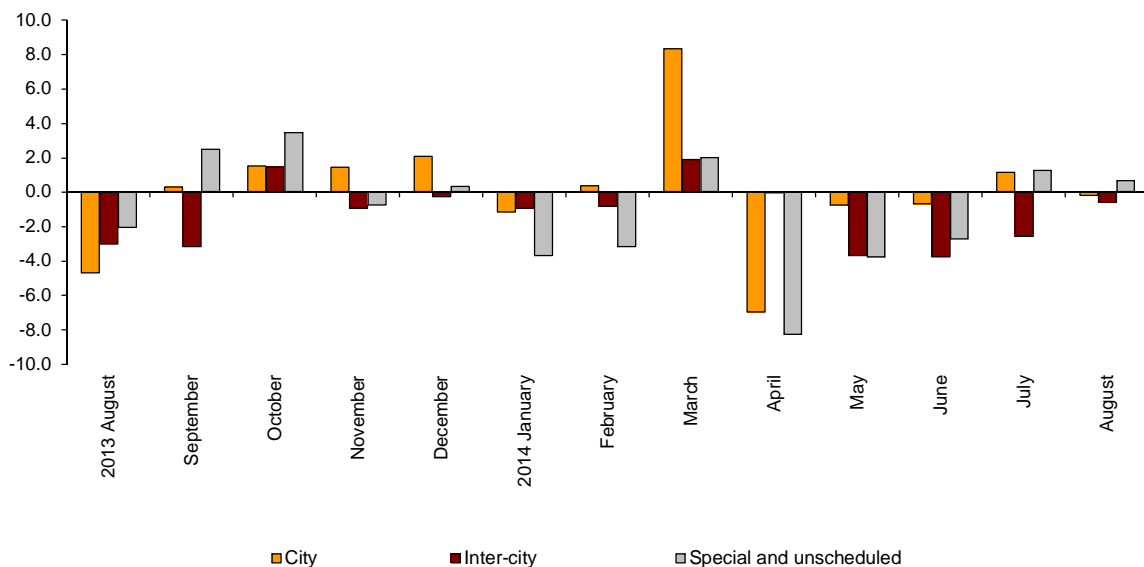
City transport decreases by 0.2% in the annual rate and inter-city transport did so by 0.6%

Passengers transport evolution

More than 264.8 million passengers used public transport in August, 0.3% less than in the same month of 2013.

City transport decreased by 0.2% and inter-city transport did so by 0.6%. Within the last one, air transport was the only one that increased (5.7%).

**Annual evolution of passengers transport
Type of transport**



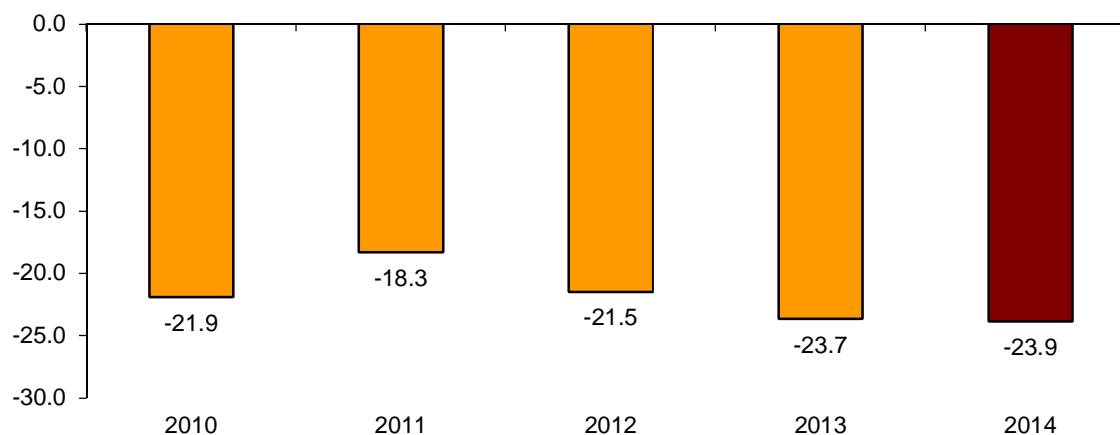
Passengers transport annual evolution, by type of transport

	City	Inter-city	Special and unschedule
2013 August	-4.7	-3.0	-2.1
September	0.3	-3.2	2.5
October	1.5	1.5	3.5
November	1.4	-0.9	-0.8
December	2.1	-0.3	0.3
2014 January	-1.2	-0.9	-3.7
February	0.4	-0.8	-3.2
March	8.4	1.9	2.0
April	-7.0	-0.1	-8.3
May	-0.8	-3.7	-3.8
June	-0.7	-3.8	-2.7
July	1.1	-2.6	1.3
August	-0.2	-0.6	0.7

Monthly rate evolution

In order to contribute to the analysis and interpretation of the data, the following chart shows the variation for July as compared with August for the last five years. The variation rate for the number of passengers on public transport in August 2014, as compared with July, was -23.9%.

**Evolution of the monthly rate
(month-on-month variation for August as compared with July)**



City transport

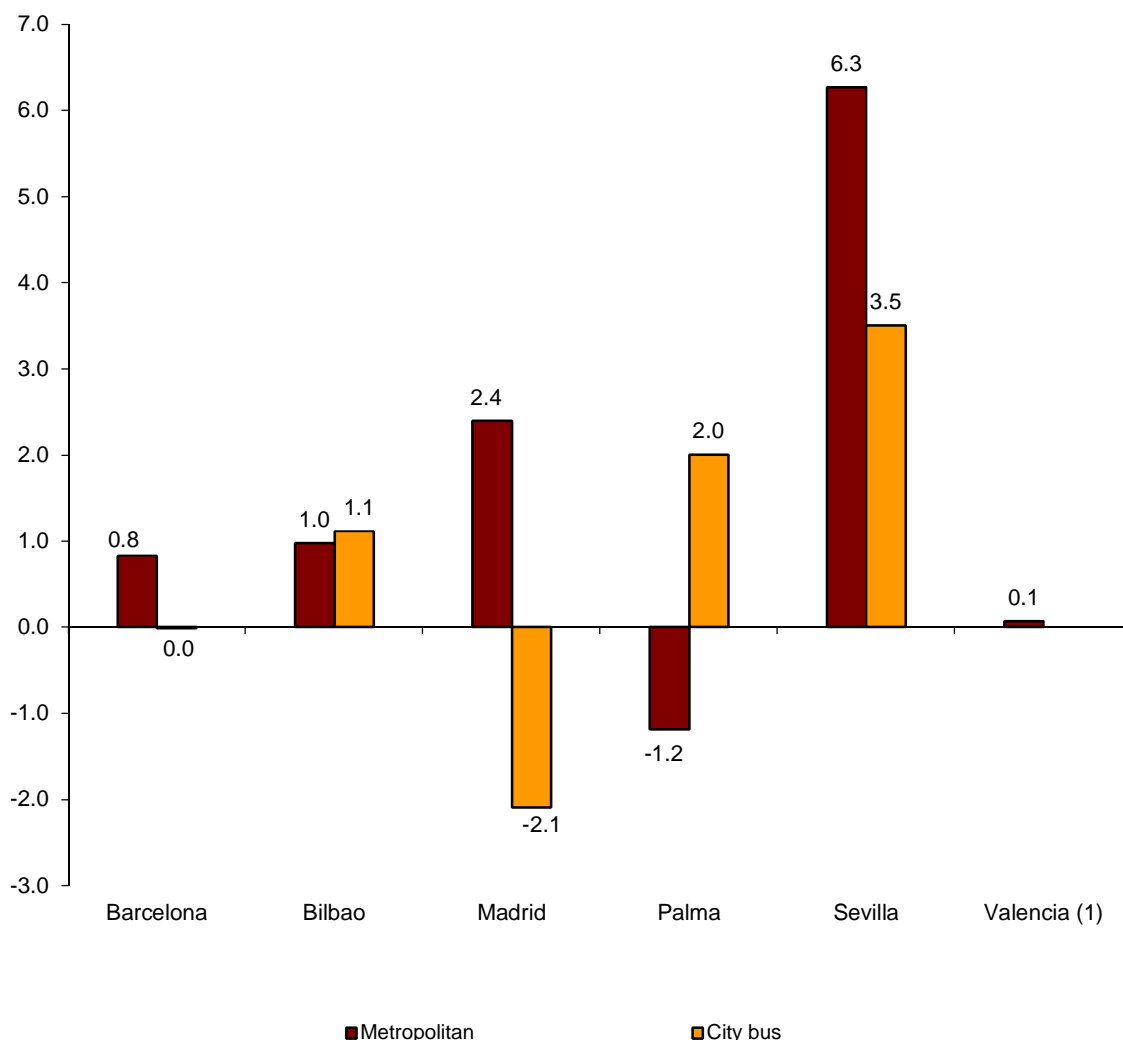
City transport was used by more than 156.4 million passengers in August, 0.2% less than in the same month of 2013.

Metropolitan transport registered an increase of 1.6% and bus transport decreased by 1.3%.

Metropolitan transport decreased in Palma (-1.2%) and increased in the rest of the cities. Sevilla (6.3%) registered the greatest increase.

Bus transport registered positive rates in all the cities using metropolitan transport, except for Madrid (-2.1%) and Barcelona (0.0%).

Annual rate of city transport passengers in cities with a Metropolitan

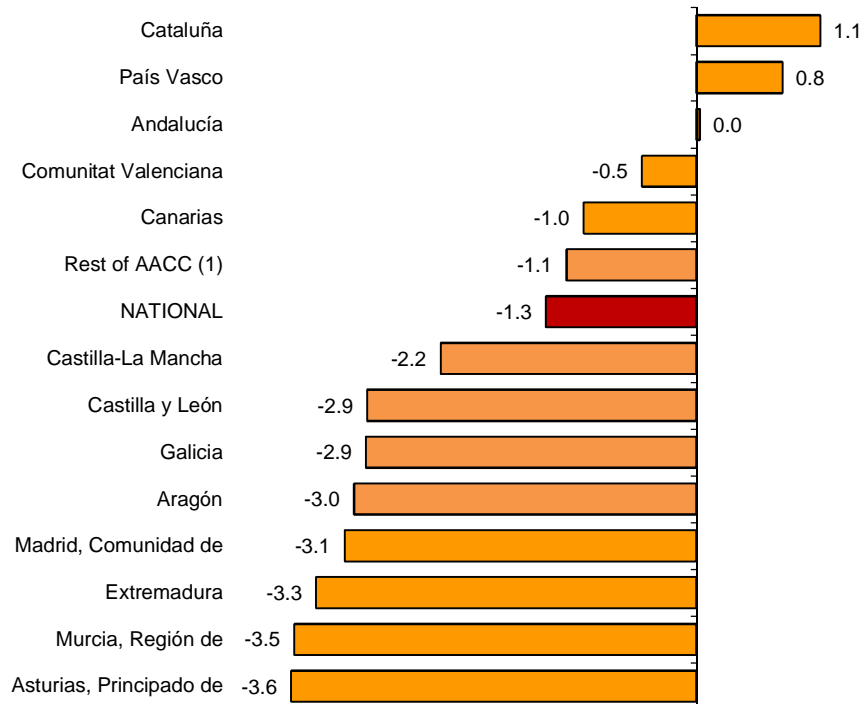


⁽¹⁾ The publication of the city transport by bus in Valencia is not allowed

The number of passengers of bus transport decreased in annual rate in all Autonomous Communities, except for Cataluña (1.1%), País Vasco (0.8%) and Andalucía (0.0%).

In turn, Principado de Asturias (-3.6%), Región de Murcia (-3.5%) and Extremadura (-3.3%) recorded the greatest decreases.

Annual rates of the number of passengers City transport by bus



⁽¹⁾ In order to protect statistical secrecy, the passengers of the Autonomous Communities of Illes Balears, Cantabria, Comunidad Foral de Navarra and La Rioja and of the Autonomous Cities of Ceuta and Melilla have been grouped

Inter-city transport

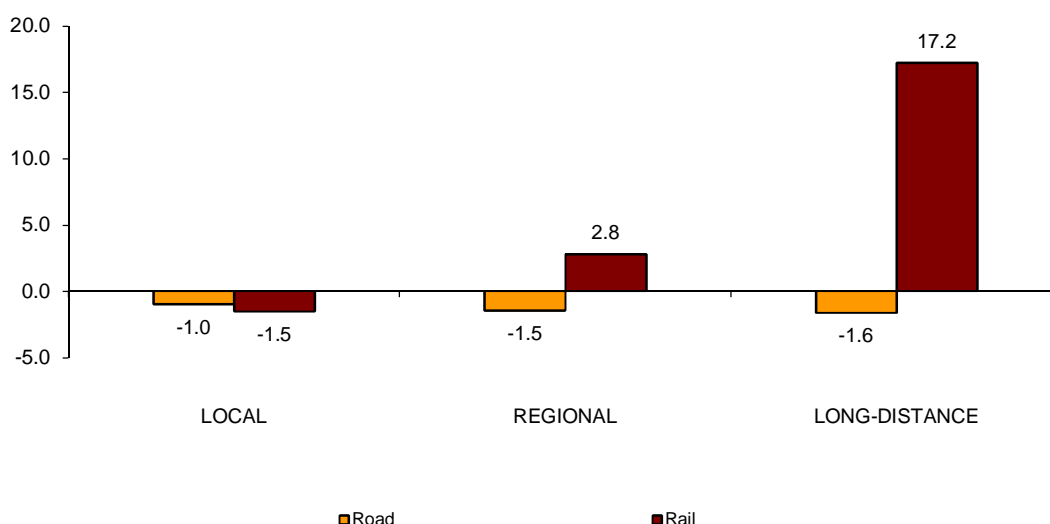
More than 88.4 million passengers used inter-city transport in August, indicating a 0.6% decrease as compared with the same month of 2013.

By type of inter-city transport, bus transport decreased by 1.2% and rail transport did so by 0.1%. In turn, air transport increased by 5.7%.

Local distance passengers decreased 1.0% for bus transport and 1.5% for rail transport. Regional distance passengers decreased 1.5% for bus transport and increased 2.8% for rail transport.

Finally, long distance passengers decreased 1.6% for bus transport and increased by 17.2% in rail transport.

**Annual rate of the number of passengers
Inter-city transport by type of transport and distance**



Special and unscheduled transport

More than 19.9 million passengers used special and unscheduled transport in August, indicating an increase of 0.7% in the annual rate.

The number of special transport passengers decreased 5.2%, reaching more than 5.5 million users. Within this, school transport decreased 4.0%, and work transport did so by 5.2%.

In turn, unscheduled transport increased 3.1%, as compared with the same month of the previous year, reaching more than 14.4 million passengers.

Passenger Transport Statistics

August 2014

Provisional data

1. Passenger transport

	Passengers transported (thousands)	% variation	
		Annual	Year-to-date average
BY TYPE OF TRANSPORT	264,888	-0.3	-0.8
City transport	156,464	-0.2	-0.1
Inter-city transport	88,468	-0.6	-1.4
Special and unscheduled transport	19,957	0.7	-2.7

2. City transport

	Passengers transported (thousands)	% variation	
		Annual	Year-to-date average
CITY TRANSPORT	156,464	-0.2	-0.1
Metropolitan	61,905	1.6	0.1
Bus ⁽¹⁾	94,559	-1.3	-0.2

⁽¹⁾ This includes trams and funiculars

2.1 City transport in cities with a Metropolitan

		Passengers transported (thousands)	% variation	
			Annual	Year-to-date average
Barcelona	City bus	10,940	0.0	0.9
	Metropolitan	23,806	0.8	0.9
Bilbao	City bus	2,104	1.1	4.2
	Metropolitan	5,606	1.0	-1.2
Madrid	City bus	19,541	-2.1	-0.2
	Metropolitan	28,938	2.4	-0.3
Palma	City bus	3,338	2.0	1.1
	Metropolitan	33	-1.2	0.2
Sevilla	City bus	3,682	3.5	3.5
	Metropolitan	541	6.3	3.2
Valencia	City bus	(1)	(1)	(1)
	Metropolitan	2,980	0.1	-0.5

(1) Publication thereof is not allowed

2.2 City bus transport

	Passengers transported (thousands)	% variation	
		Annual	Year-to-date average
NATIONAL	94,559	-1.3	-0.2
Andalucía	13,511	0.0	-0.2
Aragón	6,513	-3.0	-1.4
Asturias, Principado de	2,496	-3.6	-1.3
Canarias	3,718	-1.0	1.9
Castilla y León	3,887	-2.9	-2.0
Castilla - La Mancha	1,057	-2.2	-3.3
Cataluña	15,088	1.1	1.2
Comunitat Valenciana	6,854	-0.5	1.3
Extremadura	593	-3.3	-2.5
Galicia	4,139	-2.9	-0.7
Madrid, Comunidad de	22,069	-3.1	-1.0
Murcia, Región de	654	-3.5	3.2
País Vasco	5,472	0.8	2.8
Rest of AACC ⁽¹⁾	8,508	-1.1	-1.8

⁽¹⁾ In order to protect statistical secrecy, the passengers of the Autonomous Communities of Illes Balears, Cantabria, Comunidad Foral de Navarra and La Rioja and of the Autonomous Cities of Ceuta and Melilla have been grouped

3. Inter-city transport

	Passengers transported (thousands)	% variation	
		Annual	Year-to-date average
INTER-CITY TRANSPORT	88,468	-0.6	-1.4
Road	48,575	-1.2	-2.3
Local	30,652	-1.0	-3.1
Regional	16,216	-1.5	-0.1
Long-distance	1,708	-1.6	-4.6
Rail ⁽¹⁾	35,467	-0.1	-0.5
Local rail	30,278	-1.5	-1.0
Regional rail	2,601	2.8	-4.3
Long-distance rail	2,588	17.2	14.7
Air (domestic)	3,085	5.7	1.0
Sea (cabotage) ⁽²⁾	1,341	-6.7	-3.4

⁽¹⁾ Local and regional rail include all rail operators and Long-distance rail only includes RENFE

⁽²⁾ Estimated data

4. Special and unscheduled transport

	Passengers transported (thousands)	% variation	
		Annual	Year-to-date average
SPECIAL AND UNSCHEDULED TRANSPORT	19,957	0.7	-2.7
Special	5,531	-5.2	-6.1
School	102	-4.0	-6.3
Work	5,429	-5.2	-5.7
Unscheduled	14,426	3.1	4.3

For further information see INEbase - www.ine.es/en/ All press releases at: www.ine.es/prensa/prensa_en.htm

Press Office: Telephone numbers: 91 583 93 63 / 94 08 – Fax: 91 583 90 87 - gprensa@ine.es

Information Area: Telephone number: 91 583 91 00 – Fax: 91 583 91 58 – www.ine.es/infoine