

Passenger Transport Statistics (PT)
September 2011. *Provisional data*

Main results

- The number of passengers using **city transport increases 1.3%** in September 2011, as compared with the same month the previous year.
- The number of passengers using **inter-city transport increases 1.8%** in the interannual rate.
- **Special and unscheduled transport registers a decrease of 3.0%**, as compared with the same month the previous year.

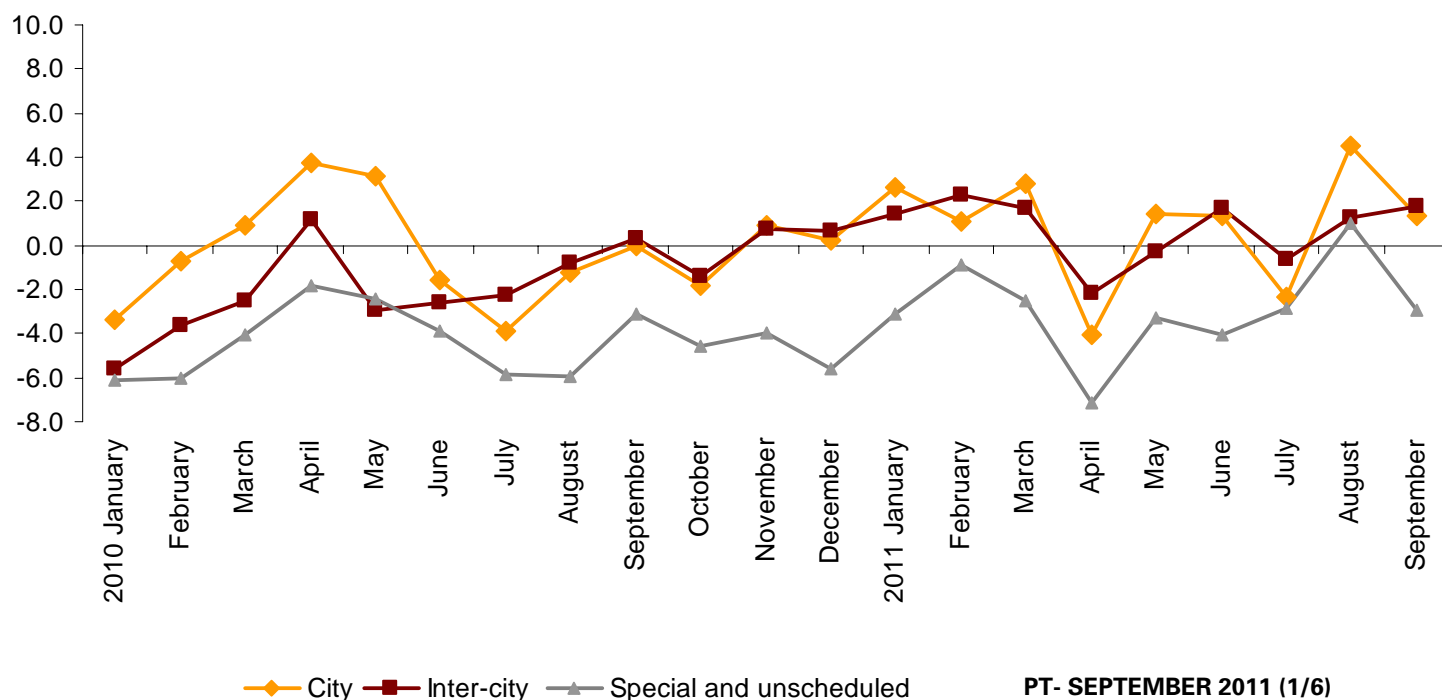
Evolution of passenger transport

More than 393.6 million passengers used public transport in September 2011, that is, 1.0% more than in the same month the previous year.

The average rate of the total passengers grown 0.5% for the first nine months in 2011 as compared with the previous year. By type of transport, all types presented positive average rates during this period, except special and unscheduled transport, which registered a decrease of 3.2%.

Annual evolution of passenger transport

Type of transport



City transport. National results and by Autonomous Community

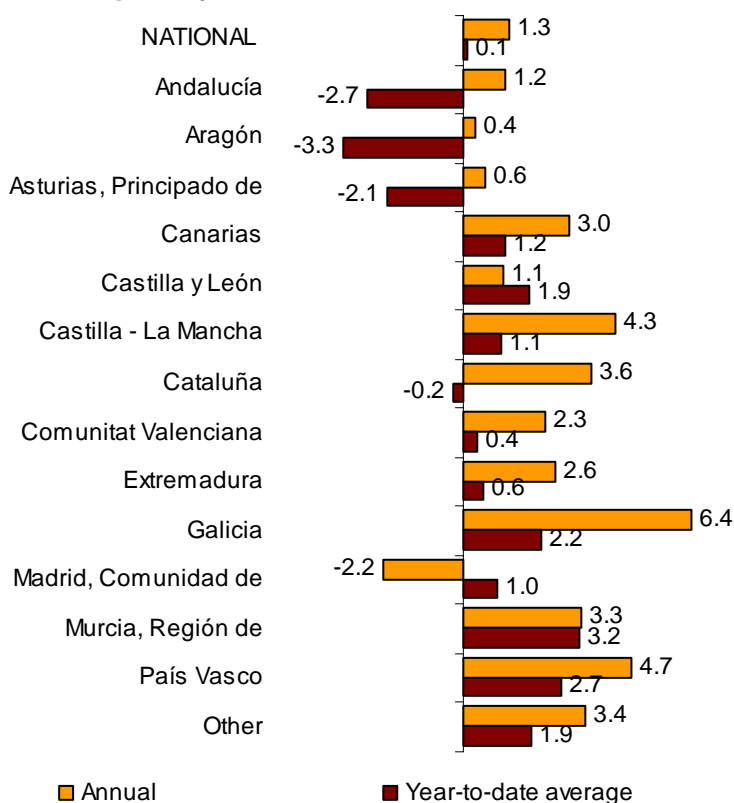
City transport was used by more than 240 million passengers in September, 1.3% more than in the same month the previous year.

Metropolitan transport increased 1.3% in the interannual rate. The metropolitans of Sevilla, Barcelona and Bilbao registered increases of 11.0%, 4.0% and 3.7%, respectively. Conversely, the metropolitans of Palma, Valencia and Madrid registered negative rates of -20.8%, -2.6% and -0.4, respectively.

The city transport by bus increased 1.3% in the interannual rate, with more than 143 million passengers in September.

By Autonomous Communities, the highest increase were registered in Galicia (6.4%), País Vasco (4.7%) and Cataluña (4.3%). Conversely, the only decrease was registered in Comunidad de Madrid (-2.2%).

**Annual rates and number of passengers average
Urban transport by road**



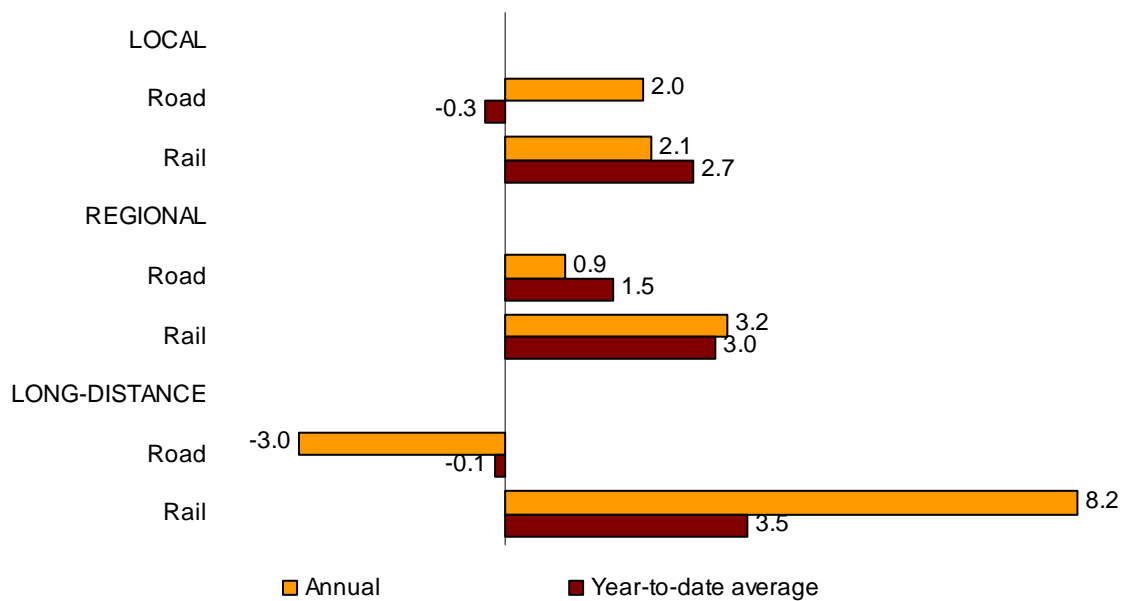
Inter-city transport

More than 111 million passengers used inter-city transport in September 2011, indicating an interannual increase of 1.8%.

All types of transport registered a positive interannual variation in September as compared with the previous year. **Rail** transport increased 2.4%, **road** (coach) transport increased 1.5%, **Sea** transport increased 0.4% and **Air** transport increased 0.3%.

Local transport increased 2.1% in rail transport and increased 2.0% in passenger transport by bus. Regional transport increased 3.2% in rail transport, and 0.9% in bus transport. Meanwhile, long-distance increased 8.2% in rail transport, and decreased 3.0% in road (coach) transport.

**Annual and average rates of the number of passengers
Inter-city transport by type of transport and distance**



Special and unscheduled transport

More than 42 million passengers used special and unscheduled transport in September, indicating a decrease of 3.0% in the interannual rate.

Special transport passengers decreased 4.2%, reaching nearly 28 million. Within this, work transport decreased 4.8% and school transport decreased 3.9%.

In turn, unscheduled transport decreased 0.5%, as compared with the same month the previous year, exceeding 14 million passengers.

Passenger Transport Statistics

September 2011

Provisional data

1. Passenger transport

	Passengers transported (thousands)	% variation	
		Annual	Year-to-date average
BY TYPE OF TRANSPORT	393,635	1.0	0.5
City transport	240,209	1.3	0.9
Inter-city transport	111,207	1.8	1.3
Special and unscheduled transport	42,219	-3.0	-3.2

2. City transport

	Passengers transported (thousands)	% variation	
		Annual	Year-to-date average
CITY TRANSPORT	240,209	1.3	0.9
Metropolitan Bus ⁽¹⁾	96,769	1.3	2.0
	143,441	1.3	0.1

(1) This includes trams and funiculars

2.1 Metropolitan

	Passengers transported (thousands)	% variation	
		Annual	Year-to-date average
TOTAL	96,769	1.3	2.0
Barcelona	32,611	4.0	3.3
Bilbao	7,437	3.7	2.2
Madrid	50,098	-0.4	1.6
Sevilla	1,140	11.0	10.0
Valencia/València	5,397	-2.6	-3.8
Palma	87	-20.8	-1.5

2.2 City bus transport

	Passengers transported (thousands)	% variation	
		Annual	Year-to-date average
TOTAL	143,441	1.3	0.1
Andalucía	18,543	1.2	-2.7
Aragón	10,087	0.4	-3.3
Asturias, Principado de	3,384	0.6	-2.1
Canarias	4,522	3.0	1.2
Castilla y León	6,231	1.1	1.9
Castilla - La Mancha	2,006	4.3	1.1
Cataluña	24,831	3.6	-0.2
Comunitat Valenciana	10,884	2.3	0.4
Extremadura	940	2.6	0.6
Galicia	5,342	6.4	2.2
Madrid, Comunidad de	37,779	-2.2	1.0
Murcia, Región de	1,565	3.3	3.2
País Vasco	6,958	4.7	2.7
Other ⁽¹⁾	10,370	3.4	1.9

(1) In order to protect statistical secrecy, the passengers of the Autonomous Communities of Illes Balears, Cantabria, Comunidad Foral de Navarra and La Rioja and of the Autonomous Cities of Ceuta and Melilla have been grouped

3. Inter-city transport

	Passengers transported (thousands)	% variation	
		Annual	Year-to-date average
INTER-CITY TRANSPORT	111,207	1.8	1.3
Road	59,524	1.5	0.3
Local	39,026	2.0	-0.3
Regional	18,772	0.9	1.5
Long-distance	1,726	-3.0	-0.1
Rail ⁽¹⁾	47,416	2.4	2.7
Local rail	42,564	2.1	2.7
Regional rail	2,886	3.2	3.0
Long-distance rail	1,966	8.2	3.5
Air (domestic) ⁽²⁾	3,436	0.3	0.8
Sea (cabotage) ⁽²⁾	831	0.4	-1.4

(1) Local and regional rail include all rail operators and Long-distance rail only includes RENFE

(2) Estimated data

4. Special and unscheduled transport

	Passengers transported (thousands)	% variation	
		Annual	Year-to-date average
SPECIAL AND UNSCHEDULED TRANSPORT	42,219	-3.0	-3.2
Special	27,846	-4.2	-4.5
School	19,778	-3.9	-4.7
Work	8,068	-4.8	-3.9
Unscheduled	14,372	-0.5	-0.6