

**Passenger Transport Statistics (PT)**

September 2015. *Provisional data*

**The number of passengers using public transport increases by 1.4% in September, as compared with the same month of the previous year**

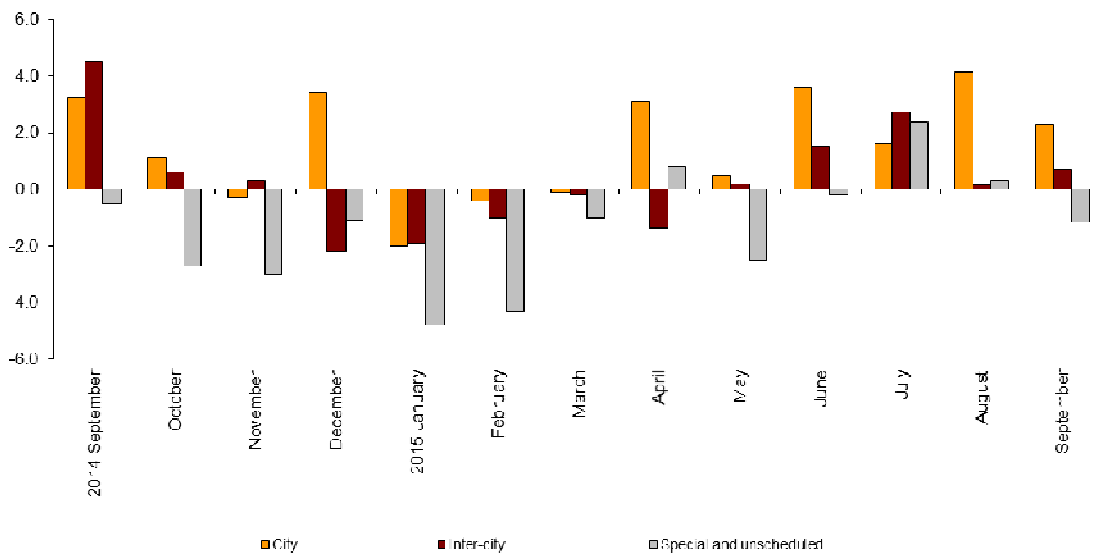
**City transport increases by 2.3% in the annual rate and inter-city transport does so by 0.7%**

**Passengers transport evolution**

More than 380.2 million passengers used public transport in September, 1.4% more than in the same month of 2014.

City transport increased by 2.3% in the annual rate and inter-city transport did so by 0.7%. Within the last one, sea transport was the one that recorded the greatest increase, with a 17.4% rate.

**Annual evolution of passengers transport**  
Type of transport



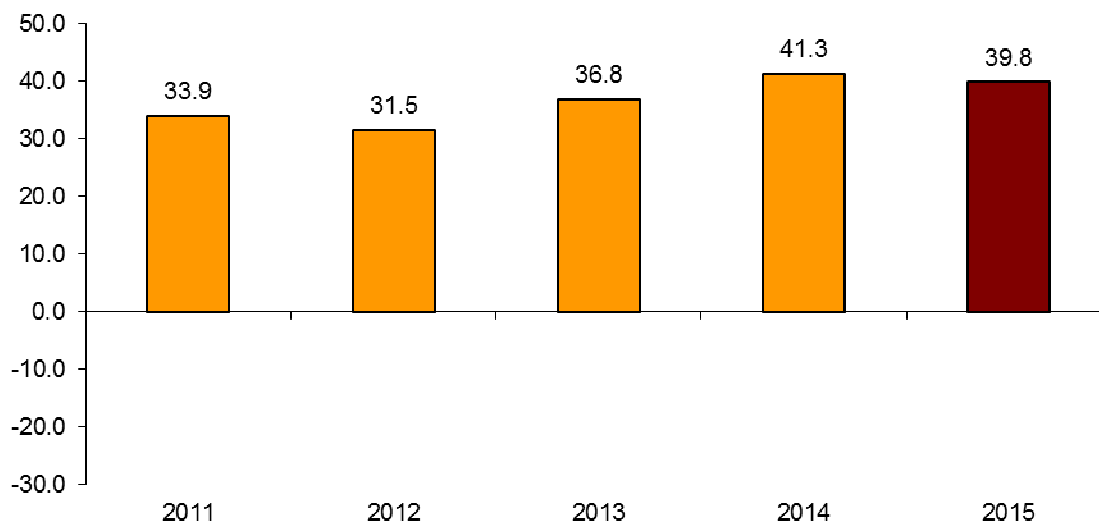
## Passengers transport annual evolution, by type of transport

	City	Inter-city	Special and unscheduled
2014 September	3.2	4.5	-0.5
October	1.1	0.6	-2.7
November	-0.3	0.3	-3.0
December	3.4	-2.2	-1.1
2015 January	-2.0	-1.9	-4.8
February	-0.4	-1.0	-4.3
March	-0.1	-0.2	-1.0
April	3.1	-1.4	0.8
May	0.5	0.2	-2.5
June	3.6	1.5	-0.2
July	1.6	3.0	2.4
August	4.2	0.2	0.3
September	2.3	0.7	-1.2

## Monthly rate evolution

The variation rate for the number of passengers on public transport in September 2015, as compared with August, was 39.8%. In order to contribute to the analysis and interpretation of data, the evolution of the monthly rate of public transport passengers in the last years is shown in the following chart.

**Evolution of the monthly rate  
(month-on-month variation for September as compared with August)**



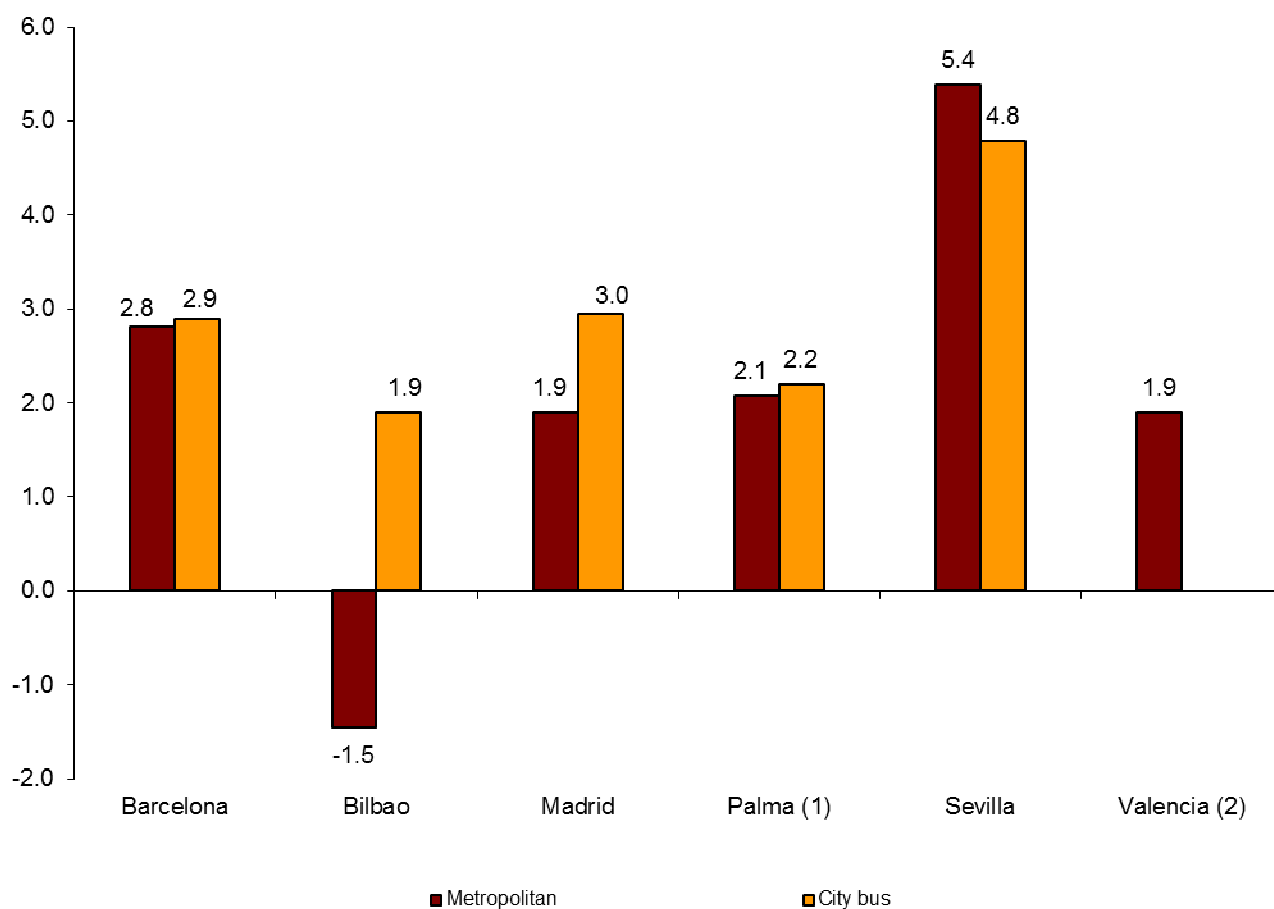
## City transport

City transport was used by more than 230.3 million passengers in September, 2.3% more than in the same month of 2014.

Metropolitan transport registered an increase of 2.0%, while bus transport did so by 2.5%.

Metropolitan transport increased in all cities, except in Bilbao, where it decreased 1.5%. In turn, bus transport increased in all cities.

### Annual rate of city transport passengers in cities with a Metropolitan



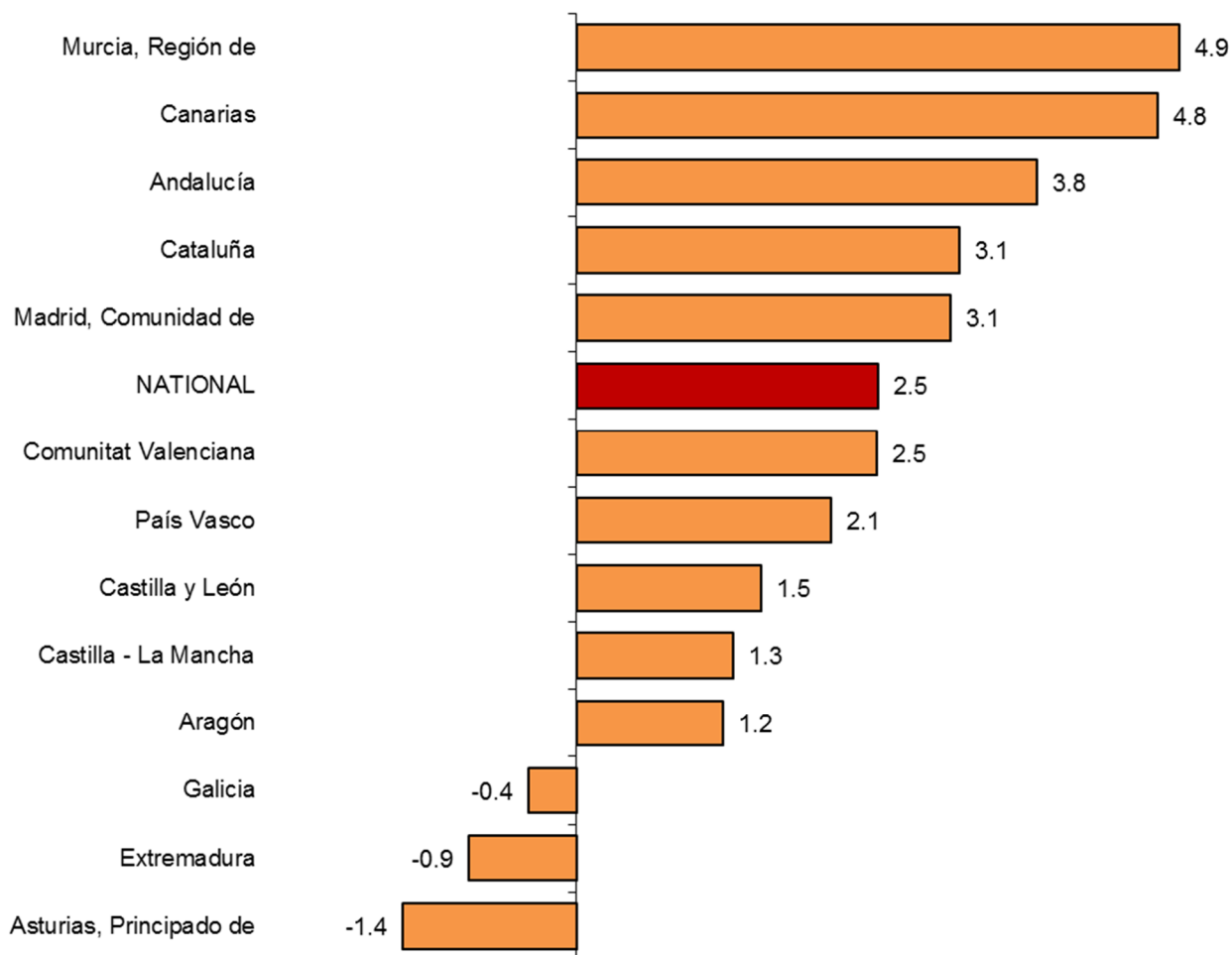
(1) Estimated metropolitan transport data

(2) The publication of the city transport by bus in Valencia is not allowed

The number of passengers of bus transport increased in all Autonomous Communities except in Principado de Asturias (-1.4%), Extremadura (-0.9%) and Galicia (-0.4%).

In turn, Región de Murcia (4.9%), Canarias (4.8%) and Andalucía (3.8%) were those that registered the greatest increases.

**Annual rates of the number of passengers  
City transport by bus**



(1) In order to protect statistical secrecy, data of the Autonomous Communities of Illes Balears, Cantabria, Comunidad Foral de Navarra and La Rioja and of the Autonomous Cities of Ceuta and Melilla are not published

### Inter-city transport

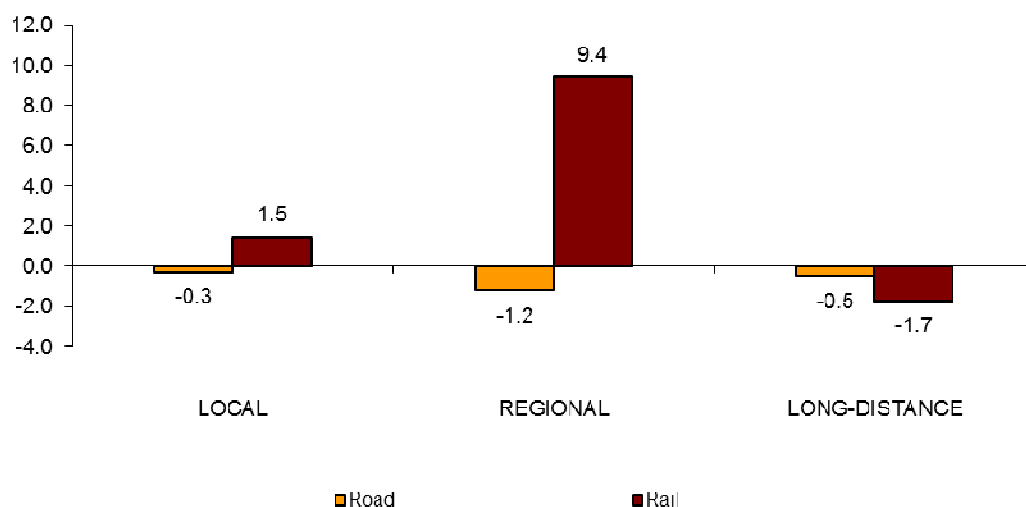
More than 108.8 million passengers used inter-city transport in September, indicating a 0.7% increase as compared with the same month of 2014.

Bus transport decreased 0.6% whereas rail transport increased 1.7%. In turn, air transport increased by 6.4% and sea transport increased by 17.4%.

Local distance passengers decreased by 0.3% for bus transport and increased by 1.5% for rail transport. Regional distance passengers decreased 1.2% for bus transport and increased 9.4% for rail transport.

Finally, long distance passengers decreased 0.5% for bus transport and decreased 1.7% for rail transport.

**Annual rate of the number of passengers  
Inter-city transport by type of transport and distance**



### Special and unscheduled transport

More than 40.9 million passengers used special and unscheduled transport in September, indicating a decrease of 1.2% in the annual rate.

The number of special transport passengers decreased 3.1%, reaching more than 25.3 million users. Within this, school transport decreased 3.4%, while work transport did so by 2.4%.

In turn, unscheduled transport increased 2.2%, as compared with the same month of 2014, reaching more than 15.5 million passengers.

## Passenger Transport Statistics

September 2015

Provisional data

### 1. Passenger transport

	Passengers transported (thousands)	% variation	
		Annual	Year-to-date average
BY TYPE OF TRANSPORT	380,203	1.4	0.7
City transport	230,391	2.3	1.3
Inter-city transport	108,898	0.7	0.1
Special and unscheduled transport	40,913	-1.2	-1.4

### 2. City transport

	Passengers transported (thousands)	% variation	
		Annual	Year-to-date average
CITY TRANSPORT	230,391	2.3	1.3
Metropolitan	92,497	2.0	1.5
Bus <sup>(1)</sup>	137,894	2.5	1.2

<sup>(1)</sup> This includes trams and funiculars

## 2.1 City transport in cities with a Metropolitan

		Passengers transported (thousands)	% variation	
			Annual	Year-to-date average
Barcelona	City bus	15,951	2.9	1.1
	Metropolitan	31,836	2.8	2.7
Bilbao	City bus	3,104	1.9	1.4
	Metropolitan	7,140	-1.5	0.5
Madrid	City bus	33,496	3.0	0.2
	Metropolitan	47,202	1.9	0.9
Palma	City bus	3,579	2.2	3.0
	Metropolitan <sup>(1)</sup>	89	2.1	0.6
Sevilla	City bus	6,493	4.8	1.1
	Metropolitan	1,183	5.4	3.1
Valencia	City bus	<sup>(2)</sup>	<sup>(2)</sup>	<sup>(2)</sup>
	Metropolitan	5,048	1.9	0.1

<sup>(1)</sup> Estimated data

<sup>(2)</sup> Publication thereof is not allowed

## 2.2 Urban transport by bus by Autonomous City and Communiy

	Passengers transported (thousands)	% variation	
		Annual	Year-to-date average
NATIONAL	137,894	2.5	1.2
Andalucía	18,561	3.8	3.1
Aragón	9,949	1.2	1.4
Asturias, Principado de	2,693	-1.4	-1.7
Balears, Illes	<sup>(1)</sup>	<sup>(1)</sup>	<sup>(1)</sup>
Canarias	4,686	4.8	2.6
Cantabria	<sup>(1)</sup>	<sup>(1)</sup>	<sup>(1)</sup>
Castilla y León	5,541	1.5	-0.4
Castilla - La Mancha	1,582	1.3	-1.1
Cataluña	22,071	3.1	1.5
Comunitat Valenciana	10,575	2.5	1.1
Extremadura	916	-0.9	-2.1
Galicia	5,199	-0.4	0.5
Madrid, Comunidad de	37,739	3.1	0.2
Murcia, Región de	1,529	4.9	1.5
Navarra, Comunidad Foral de	<sup>(1)</sup>	<sup>(1)</sup>	<sup>(1)</sup>
País Vasco	7,220	2.1	1.4
Rioja, La	<sup>(1)</sup>	<sup>(1)</sup>	<sup>(1)</sup>
Ceuta	<sup>(1)</sup>	<sup>(1)</sup>	<sup>(1)</sup>
Melilla	<sup>(1)</sup>	<sup>(1)</sup>	<sup>(1)</sup>

### 3. Inter-city transport

	Passengers transported (thousands)	% variation	
		Annual	Year-to-date average
INTER-CITY TRANSPORT	108,898	0.7	0.1
Road	56,792	-0.6	-0.7
Local	38,266	-0.3	-0.9
Regional	17,125	-1.2	-0.5
Long-distance	1,401	-0.5	0.3
Rail <sup>(1)</sup>	48,257	1.7	0.8
Local rail	43,068	1.5	0.5
Regional rail	2,692	9.4	1.3
Long-distance rail	2,498	-1.7	5.4
Air (domestic)	2,921	6.4	5.8
Sea (cabotage)	928	17.4	5.4

<sup>(1)</sup> Local and regional rail include all rail operators and Long-distance rail only includes RENFE

### 4. Special and unscheduled transport

	Passengers transported (thousands)	% variation	
		Annual	Year-to-date average
SPECIAL AND UNSCHEDULED TRANSPORT	40,913	-1.2	-1.4
Special	25,324	-3.1	-4.0
School	17,716	-3.4	-4.3
Work	7,608	-2.4	-3.3
Unscheduled	15,589	2.2	3.2

For further information see INEbase - [www.ine.es/en/](http://www.ine.es/en/) All press releases at: [www.ine.es/prensa/prensa\\_en.htm](http://www.ine.es/prensa/prensa_en.htm)

**Press Office:** Telephone numbers: 91 583 93 63 / 94 08 – Fax: 91 583 90 87 - [gprensa@ine.es](mailto:gprensa@ine.es)

**Information Area:** Telephone number: 91 583 91 00 – Fax: 91 583 91 58 – [www.ine.es/infoine](http://www.ine.es/infoine)