

**Passenger Transport Statistics (PT)**  
September 2017. *Provisional data*

**The number of passengers using public transport decreases by 0.8% in September, as compared with the same month of the previous year**

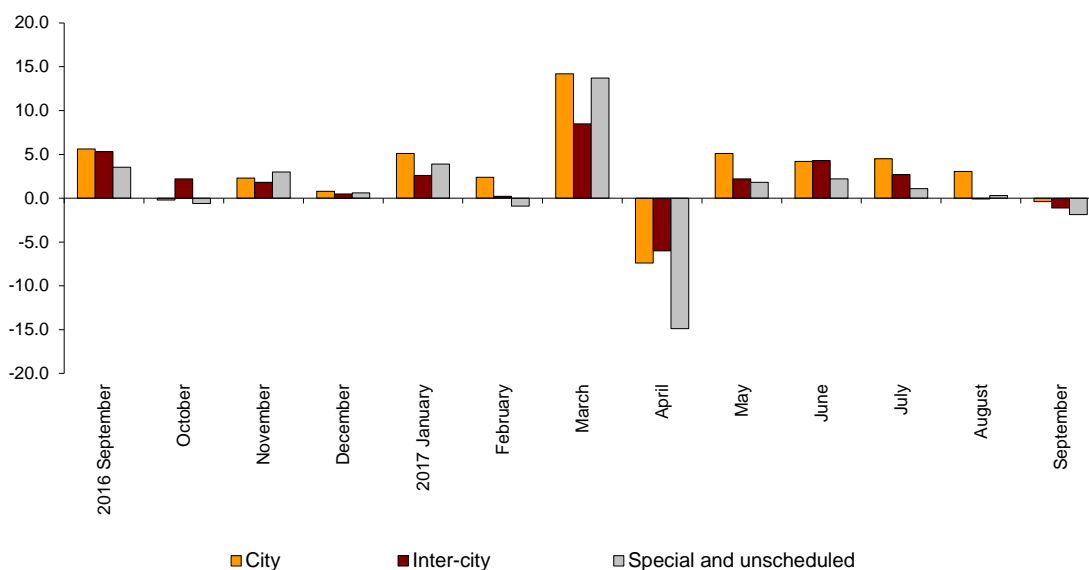
**City transport decreases by 0.4% in the annual rate and inter-city transport decreases by 1.1%**

**Evolution of passenger transport**

More than 398.0 million passengers used public transport in September, 0.8% less than in the same month of 2016.

City transport decreased by 0.4% in the annual rate and inter-city transport did so by 1.1%. Within this, bus transport decreased by 2.6%.

**Annual evolution of passengers transport**  
Type of transport



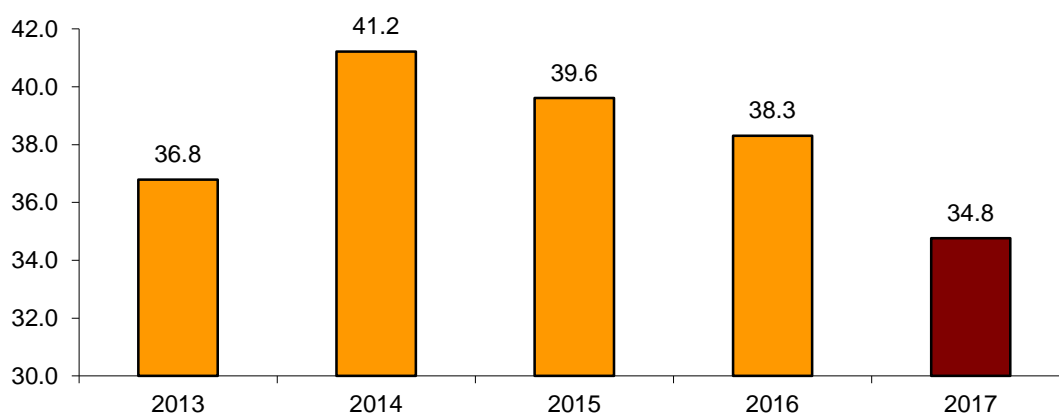
**Passengers transport annual evolution, by type of transport**

	City	Inter-city	Special and unschedule
2016 September	5.6	5.3	3.5
October	-0.2	2.2	-0.6
November	2.3	1.8	3.0
December	0.8	0.5	0.6
2017 January	5.1	2.6	3.9
February	2.4	0.2	-0.9
March	14.2	8.5	13.7
April	-7.4	-6.0	-14.9
May	5.1	2.2	1.8
June	4.2	4.3	2.2
July	4.5	2.7	1.1
August	3.1	-0.1	0.3
September	-0.4	-1.1	-1.9

**Evolution of the monthly rate**

The variation rate for the number of passengers of public transport in September, as compared with August, was 34.8%. To contribute to the analysis and interpretation of data, the evolution of the monthly rate of public transport passengers in recent years is shown in the following chart.

**Evolution of the monthly rate  
(month-on-month variation for September as compared with August)**



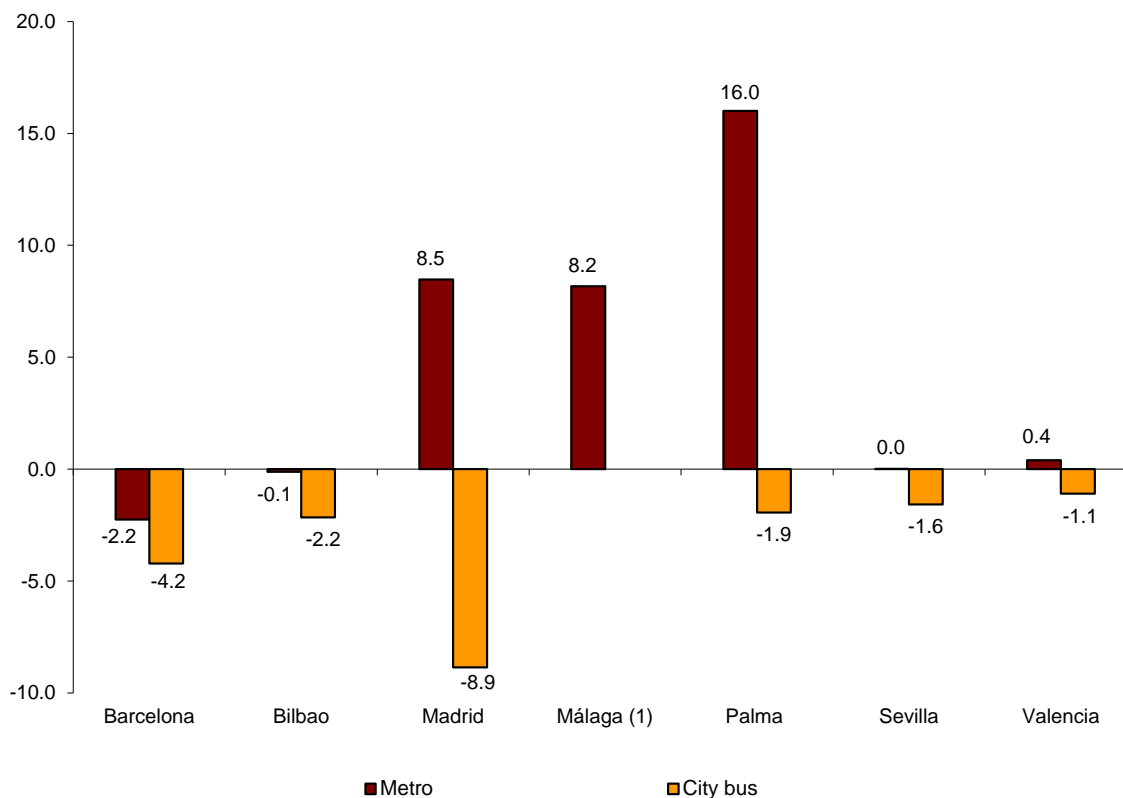
### City transport

City transport was used by more than 242.0 million passengers in September, 0.4% less than in the same month of 2016.

Metro transport registered an increase of 3.6%. Metro transport in Palma registered the greatest increase (16.0%), while that of Barcelona registered the greatest decrease (-2.2%).

Bus transport in all cities with metro transport decreased. The greatest decrease was registered in Madrid (-8.9%).

**Annual rate of city transport passengers in major cities with Metro**



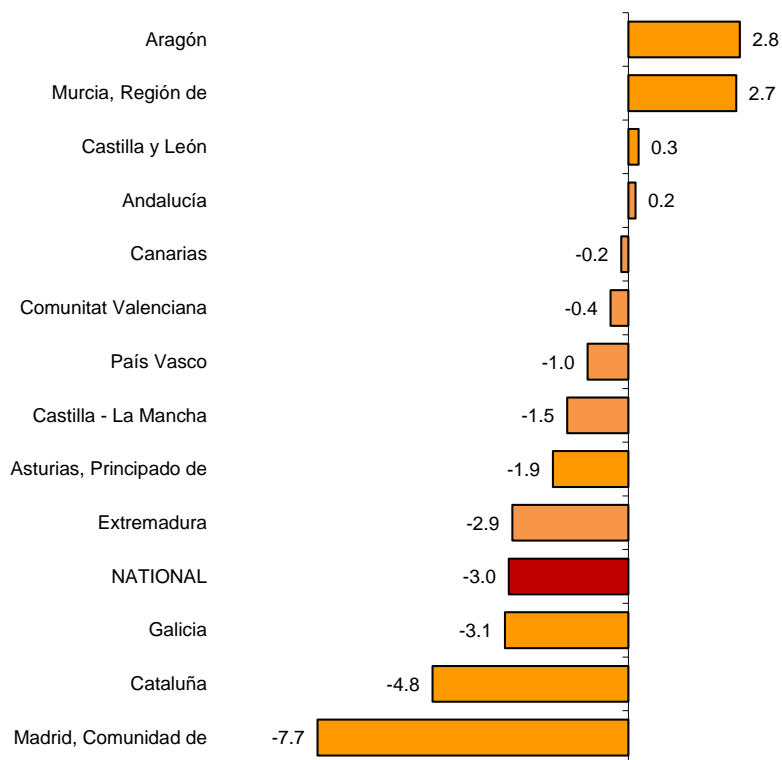
(1) The publication of the data for city transport by bus in Málaga is not allowed

City transport by bus increased 1.6% in September, as compared with the same month of the previous year.

The number of passengers of bus transport registered the greatest increases in Aragón (2.8%), Murcia (2.7%) and Castilla y León (0.3%).

In turn, Comunidad de Madrid (-7.7%), Cataluña (-4.8%) and Galicia (-3.1%) registered the greatest decreases.

**Annual rates of the number of passengers  
City transport by bus**



(1) To maintain statistical secrecy, data of the Autonomous Communities of Illes Balears, Cantabria, Comunidad Foral de Navarra and La Rioja and the Autonomous Cities of Ceuta and Melilla is not published.

### Inter-city transport

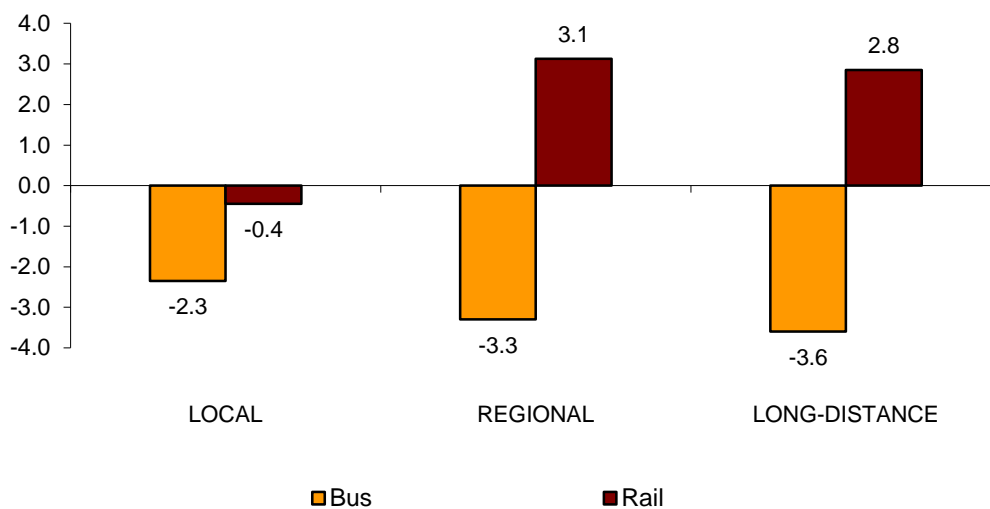
More than 113.7 million passengers used inter-city transport in September, representing a decrease of 1.1% as compared with the same month of 2016.

By type of transport, maritime transport increased by 8.6% and air transport did so by 7.7%. In turn, rail transport decreased by 0.1% and bus transport did so by 2.6%.

Local distance passengers decreased by 2.3% for bus transport and by 0.4% for rail transport. Regional distance passengers decreased by 3.3% for bus transport and increased 3.1% for rail transport.

Finally, long distance passengers decreased by 3.6% for bus transport and increased by 2.8% for rail transport. Within the latter, AVE (high speed railway) increased by 3.4%.

**Annual rate of the number of passengers  
Inter-city transport by type of transport and distance**



### Special and unscheduled transport

More than 42.2 million passengers used special and unscheduled transport in September, indicating a decrease of 1.9% in the annual rate.

The number of special transport passengers decreased by 8.4%, reaching more than 24.5 million users. Within this, school transport decreased by 7.1%, while work transport decreased by 12.0%.

In turn, unscheduled transport increased 9.0%, as compared with the same month of 2016, reaching more than 17.6 million passengers.

## Passenger Transport Statistics

September 2017

Provisional data

### 1. Passenger transport

	Passengers transported (thousands)	% variation	
		Annual	Year-to-date average
BY TYPE OF TRANSPORT	398,088	-0.8	2.5
City transport	242,077	-0.4	3.4
Inter-city transport	113,794	-1.1	1.5
Special and unscheduled transport	42,218	-1.9	0.3

### 2. City transport

	Passengers transported (thousands)	% variation	
		Annual	Year-to-date average
CITY TRANSPORT	242,077	-0.4	3.4
Metro	98,404	3.6	5.2
Bus <sup>(1)</sup>	143,673	-3.0	2.1

<sup>(1)</sup> This includes trams and funiculars

## 2.1 City transport in major cities with Metro

		Passengers transported (thousands)	% variation	
			Annual	Year-to-date average
Barcelona	City bus	17,116	-4.2	5.1
	Metro	31,780	-2.2	3.6
Bilbao	City bus	3,023	-2.2	-0.4
	Metro	7,177	-0.1	0.9
Madrid	City bus	34,671	-8.9	-0.1
	Metro	52,442	8.5	7.2
Málaga	City bus	(1)	(1)	(1)
	Metro	427	8.2	9.5
Palma	City bus	3,663	-1.9	1.4
	Metro	77	16.0	8.0
Sevilla	City bus	6,141	-1.6	-0.2
	Metro	1,224	0.0	4.7
Valencia	City bus	8,000	-1.1	4.1
	Metro	5,275	0.4	2.5

(1) Publication thereof is not allowed

## 2.2 Urban transport by bus by Autonomous Cities and Communities

	Passengers transported (thousands)	% variation	
		Annual	Year-to-date average
NATIONAL	143,673	-3.0	2.1
Andalucía	18,006	0.2	0.6
Aragón	10,028	2.8	7.4
Asturias, Principado de	2,631	-1.9	-1.2
Balears, Illes	(1)	(1)	(1)
Canarias	4,820	-0.2	3.0
Cantabria	(1)	(1)	(1)
Castilla y León	5,678	0.3	0.7
Castilla - La Mancha	1,546	-1.5	-1.5
Cataluña	23,693	-4.8	4.0
Comunitat Valenciana	12,097	-0.4	3.1
Extremadura	899	-2.9	1.4
Galicia	5,194	-3.1	0.2
Madrid, Comunidad de	39,963	-7.7	0.6
Murcia, Región de	1,578	2.7	5.5
Navarra, Comunidad Foral de	(1)	(1)	(1)
País Vasco	7,422	-1.0	1.5
Rioja, La	(1)	(1)	(1)
Ceuta	(1)	(1)	(1)
Melilla	(1)	(1)	(1)

### 3. Inter-city transport

	Passengers transported (thousands)	% variation	
		Annual	Year-to-date average
INTER-CITY TRANSPORT	113,794	-1.1	1.5
Bus	58,595	-2.6	0.0
Local	40,568	-2.3	-0.1
Regional	16,687	-3.3	-0.1
Long-distance	1,340	-3.6	4.4
Rail <sup>(1)</sup>	50,630	-0.1	2.9
Local rail	45,004	-0.4	2.9
Regional rail	2,818	3.1	1.5
Long-distance rail	2,808	2.8	3.9
AVE train	1,794	3.4	4.1
Rest of long-distance rail	1,014	1.8	3.5
Air (domestic)	3,400	7.7	6.5
Maritime (cabotage)	1,170	8.6	3.8

<sup>(1)</sup> Local rail includes all rail operators and regional and long-distance rail include only RENFE

### 4. Special and unscheduled transport

	Passengers transported (thousands)	% variation	
		Annual	Year-to-date average
SPECIAL AND UNSCHEDULED TRANSPORT	42,218	-1.9	0.3
Special	24,563	-8.4	-3.4
School	18,094	-7.1	-0.8
Work	6,469	-12.0	-10.1
Unscheduled	17,655	9.0	6.3

For further information see INEbase - [www.ine.es/en/](http://www.ine.es/en/) All press releases at: [www.ine.es/prensa/prensa\\_en.htm](http://www.ine.es/prensa/prensa_en.htm)

**Press Office:** Telephone numbers: 91 583 93 63 / 94 08 – Fax: 91 583 90 87 - [gprensa@ine.es](mailto:gprensa@ine.es)

**Information Area:** Telephone number: 91 583 91 00 – Fax: 91 583 91 58 – [www.ine.es/infoine](http://www.ine.es/infoine)