

Passenger Transport Statistics (PT)
November 2013. *Provisional data*

The number of passengers using public transport increases 0.5% in November, as compared with the same month of the previous year

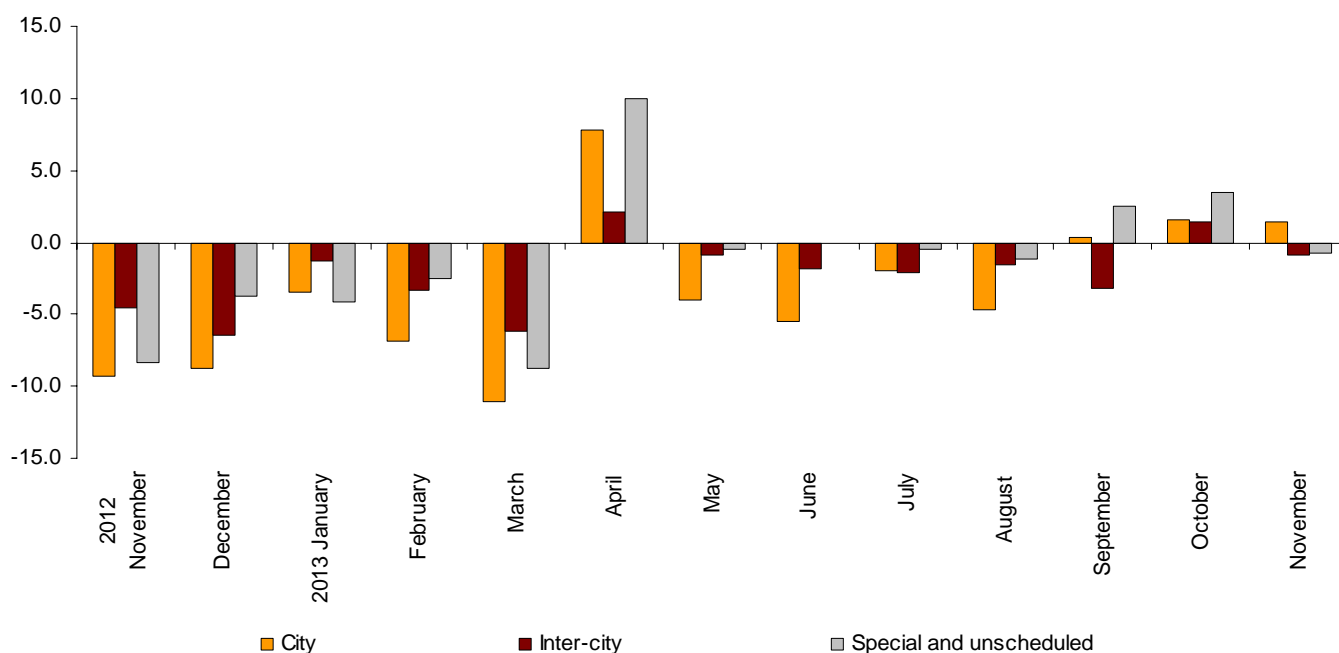
The city transport increases 1.4% in the annual rate and inter-city transport decreases 0.9%

Passengers transport evolution

More than 387.3 million passengers used public transport in November, 0.5% more than in the same month of 2012.

City transport increased 1.4% and inter-city transport decreased 0.9% in the annual rate. Within the inter-city transport, the most significant drop was that of air transport, with a rate of -3.4%.

Annual evolution of passengers transport
Type of transport



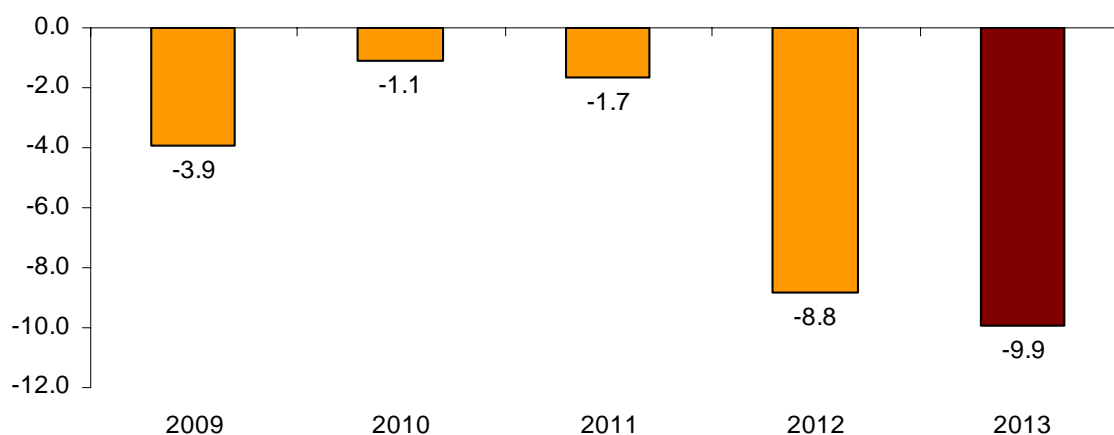
Passengers transport annual evolution, by type of transport

	City	Inter-city	Special and unscheduled
2012 November	-9.3	-4.6	-8.4
December	-8.8	-6.4	-3.7
2013 January	-3.5	-1.3	-4.1
February	-6.9	-3.3	-2.5
March	-11.1	-6.2	-8.8
April	7.8	2.1	9.9
May	-4.1	-0.9	-0.5
June	-5.5	-1.8	-0.1
July	-1.9	-2.1	-0.4
August	-4.7	-1.6	-1.1
September	0.3	-3.2	2.5
October	1.5	1.5	3.5
November	1.4	-0.9	-0.8

Monthly rate evolution¹

The variation rate for the number of passengers on public transport in November, as compared with October was -9.9%.

**Evolution of the monthly rate
(month-on-month variation for November as compared with October)**



¹ In order to contribute to the analysis and interpretation of the data, this section has been added including the evolution of the monthly rate for the number of users of public transport in recent years. The month-on-month rates of this type of series may have a seasonal behaviour; therefore it is recommended to evaluate them in relation to the item of data for the same month in previous years.

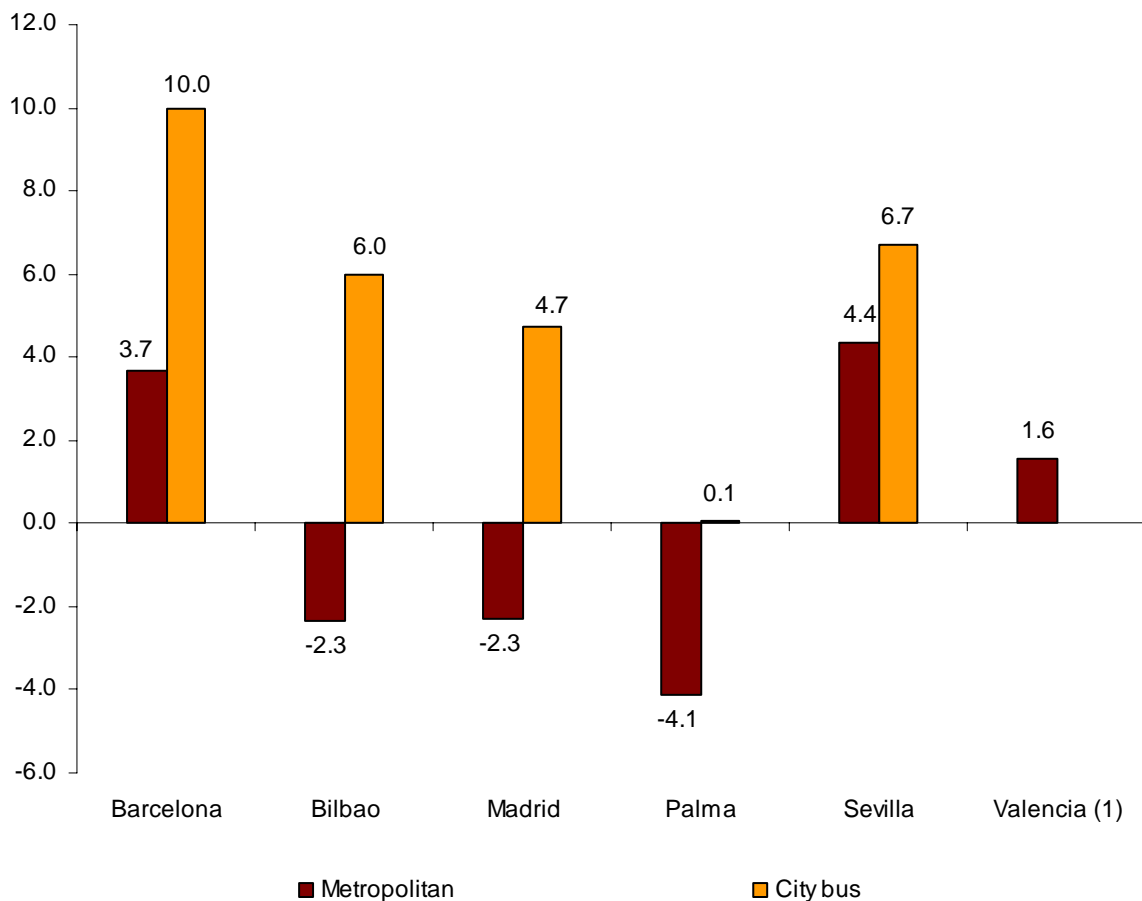
City transport

City transport was used by over 236.3 million passengers in November, 1.4% more than the same month of 2012.

Metropolitan transport registered a decrease of 0.1%, whereas bus transport increased by 2.5%.

Metropolitan transport registered a decrease in Palma (−4.1%), Bilbao and Madrid (both at −2.3%). In turn, bus transport increased in all cities using metropolitan transport. Barcelona registered the greatest increase (10.0%).

Interannual rate of city transport passengers in cities with a Metropolitan

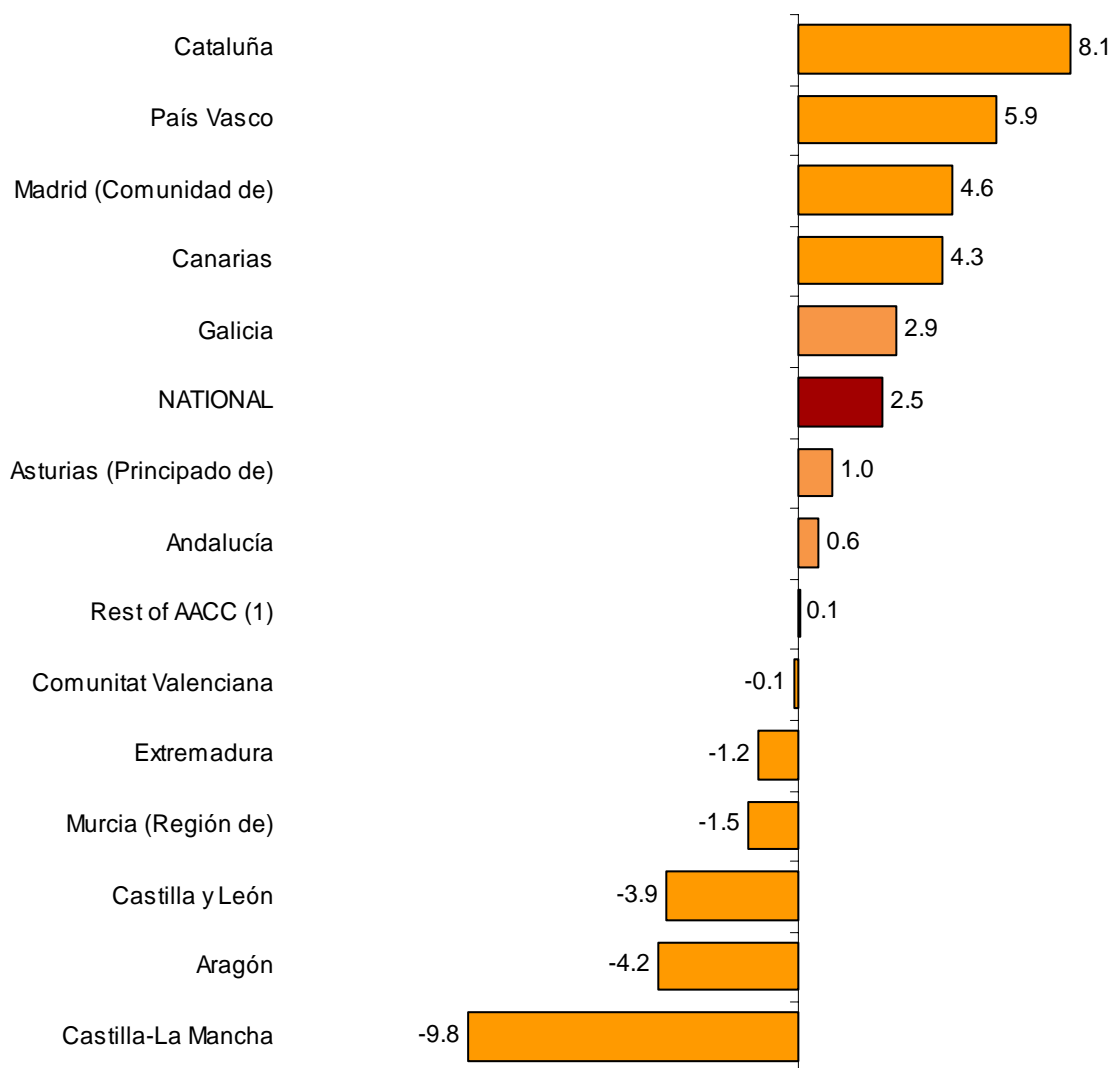


⁽¹⁾The publication of the city transport by bus in Valencia is not allowed.

Seven Autonomous Communities registered an annual increase in the number of passengers in the transport by bus, as compared with November 2012. Cataluña (8.1%), País Vasco (5.9%) and Comunidad de Madrid (4.6%) registered the greatest increases.

In turn, Castilla-La Mancha (-9.8%), Aragón (-4.2%) and Castilla y León (-3.9%) registered the greatest decreases.

**Annual rate of the number of passengers
City transport by bus**



(1) In order to protect statistical secrecy, the passengers of the Autonomous Communities of Illes Balears, Cantabria, Comunidad Foral de Navarra and La Rioja and of the Autonomous Cities of Ceuta and Melilla have been grouped.

Inter-city transport

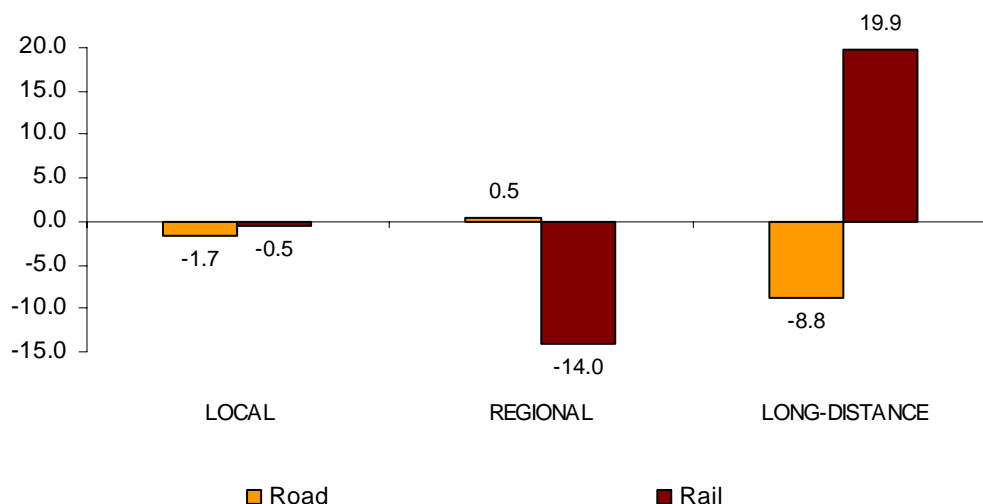
More than 106.1 million passengers used inter-city transport in November, indicating a 0.9% decrease, as compared with the same month of 2012.

Air transport registered the greatest decrease (−3.4%), followed by bus transport (−1.2%) and rail transport (−0.5%).

Local distance passengers decreased 1.7% for bus transport and 0.5% for rail transport. Regional passengers distance increased 0.5% for bus transport and decreased 14.0% for rail transport.

Finally, long-distance passengers decreased 8.8% in bus transport, while its number increased 19.9% in rail transport.

Annual rate of the number of passengers Inter-city transport by type of transport and distance



Special and unscheduled transport

Over 44.7 million passengers used special and unscheduled transport in November, indicating a decrease of 0.8% in the annual rate.

The number of special transport passengers decreased 0.2%, reaching over 33.6 million users. Within this, school transport decreased 0.6%, while work transport increased 1.2%.

In turn, unscheduled transport decreased 2.5%, as compared with the same month of the previous year, reaching more than 11.1 million passengers.

Passenger Transport Statistics

November 2013

Provisional data

1. Passenger transport

	Passengers transported (thousands)	% variation	
		Annual	Year-to-date average
BY TYPE OF TRANSPORT	387,301	0.5	-2.0
City transport	236,337	1.4	-2.5
Inter-city transport	106,167	-0.9	-1.6
Special and unscheduled transport	44,797	-0.8	-0.3

2. City transport

	Passengers transported (thousands)	% variation	
		Annual	Year-to-date average
CITY TRANSPORT	236,337	1.4	-2.5
Metropolitan	95,365	-0.1	-5.1
Bus ⁽¹⁾	140,972	2.5	-0.7

⁽¹⁾ This includes trams and funiculars

2.1 City transport in cities with a Metropolitan

		Passengers transported (thousands)	% variation	
			Annual	Year-to-date average
Barcelona	City bus	16,270	10.0	0.9
	Metropolitan	31,452	3.7	-1.4
Bilbao	City bus	3,196	6.0	0.5
	Metropolitan	7,515	-2.3	-0.7
Madrid	City bus	36,362	4.7	-0.7
	Metropolitan	49,900	-2.3	-8.0
Palma	City bus	2,828	0.1	-1.7
	Metropolitan	104	-4.1	0.4
Sevilla	City bus	6,807	6.7	1.6
	Metropolitan	1,247	4.4	-1.4
Valencia	City bus	(1)	(1)	(1)
	Metropolitan	5,146	1.6	-6.2

(1) Publication thereof is not allowed

2.2 City bus transport

	Passengers transported (thousands)	% variation	
		Annual	Year-to-date average
NATIONAL	140,972	2.5	-0.7
Andalucía	18,452	0.6	-1.5
Aragón	9,779	-4.2	0.9
Asturias, Principado de	2,833	1.0	-0.6
Canarias	4,537	4.3	1.0
Castilla y León	5,711	-3.9	-6.2
Castilla - La Mancha	1,681	-9.8	-13.1
Cataluña	22,676	8.1	1.2
Comunitat Valenciana	10,526	-0.1	-1.8
Extremadura	1,039	-1.2	-4.1
Galicia	5,215	2.9	-0.9
Madrid, Comunidad de	40,960	4.6	-0.1
Murcia, Región de	1,624	-1.5	-9.9
País Vasco	7,207	5.9	1.1
Rest of AACC ⁽¹⁾	8,735	0.1	-1.1

⁽¹⁾ In order to protect statistical secrecy, the passengers of the Autonomous Communities of Illes Balears, Cantabria, Comunidad Foral de Navarra and La Rioja and of the Autonomous Cities of Ceuta and Melilla have been grouped

3. Inter-city transport

	Passengers transported (thousands)	% variation	
		Annual	Year-to-date average
INTER-CITY TRANSPORT	106,167	-0.9	-1.6
Road	54,371	-1.2	-1.6
Local	37,479	-1.7	-0.7
Regional	15,683	0.5	-2.9
Long-distance	1,209	-8.8	-7.5
Rail ⁽¹⁾	49,233	-0.5	-1.0
Local rail	44,903	-0.5	-1.4
Regional rail	2,274	-14.0	-3.4
Long-distance rail	2,056	19.9	13.1
Air (domestic)	2,103	-3.4	-14.6
Sea (cabotage) ⁽²⁾	459	-1.7	7.5

⁽¹⁾ Local and regional rail include all rail operators and Long-distance rail only includes RENFE

⁽²⁾ Estimated data

4. Special and unscheduled transport

	Passengers transported (thousands)	% variation	
		Annual	Year-to-date average
SPECIAL AND UNSCHEDULED TRANSPORT	44,797	-0.8	-0.3
Special	33,680	-0.2	0.6
School	26,053	-0.6	-1.0
Work	7,627	1.2	5.0
Unscheduled	11,117	-2.5	-2.3

For further information see INEbase - www.ine.es/en/ All press releases at: www.ine.es/prensa/prensa_en.htm

Press Office: Telephone numbers: 91 583 93 63 / 94 08 – Fax: 91 583 90 87 - gprensa@ine.es

Information Area: Telephone number: 91 583 91 00 – Fax: 91 583 91 58 – www.ine.es/infoine