

Economically Active Population Survey (EAPS) First quarter of 2009

Main results

- The number of employed persons in the first quarter of 2009 stands at 19,090,800 (766,000 fewer than in the fourth quarter of last year). In the last year, employment has decreased by 1,311,500 persons. The interannual employment rate stands at -6.43%.
- The activity rate stands at 60.15%, a figure similar to that recorded the previous quarter. For men, the rate is 69.11% (one tenth lower than in the fourth quarter of 2008), while the rate for women is 51.51% (13 hundredths higher).
- The number of unemployed persons increases by 802,800 persons as compared with the previous quarter, standing at 4,010,700. The unemployment rate increases 3.45 points, reaching 17.36%. The number of unemployed persons has increased by 1,836,500 persons in the last 12 months.
- The total number of wage earners decreases by 465,100 persons as compared with the previous quarter, and stands at 15,843,100. In the past year, the number of wage earners has decreased by 974,400 persons. Wage earners with a permanent contract increase by 63,400 persons this quarter, while temporary wage earners decrease by 528,500 persons. The temporary employment rate stands at 25.41%, with a decrease of 2.52 points as compared with the previous quarter.
- The number of employed persons decreases in all Autonomous Communities. The greatest decreases are recorded in Cataluña (168,800 fewer employed persons as compared with the previous quarter), Comunitat Valenciana (120,900) and Comunidad de Madrid (107,000).
- Unemployment increases in all Autonomous Communities as compared with the previous quarter. The greatest increases in unemployment are in Cataluña (166,900 more unemployed persons than in the previous quarter), Comunidad de Madrid (114,700) and Comunitat Valenciana (109,500).
- **Since 2009, the EAPS has encoded economic activity only with the new CNAE-2009 Activities Classification.** During the four quarters of 2008, a double encoding has been performed for the activity, also incorporating the CNAE-1993 code used in the survey up until the fourth quarter of 2007, in order to enable comparisons with previous quarters. In the annex to this press release, additional information may be consulted regarding the new classification.

The number of active persons in Spain stands at 23,101,500 persons

The total number of active persons reached 23,101,500 in the first quarter of 2009, with an increase of 36,800 persons as compared with the previous quarter. The activity rate was 60.15%, that is, one hundredth more than in the previous quarter.

The number of active women increased by 39,600 persons this quarter, standing at 10,074,800. The female activity rate increased 13 hundredths, reaching 51.51%. On the other hand, the number of active men stood at 13,026,700, with a decrease of 2,800 persons. The male activity rate decreased one tenth in the first quarter, standing at 69.11%.

Over the past 12 months, the number of active persons increased by 525,000 persons, of whom 440,900 were women.

The activity rate of the foreign population (77.99%) increased 68 hundredths this quarter, while that of the Spanish population decreased one tenth, reaching 57.61%. The difference between the two activity rates exceeded 20 points. To a large extent, the age structure of the foreign nationals explained this difference.

Employment decreases by 766,000 persons this quarter, to 19,090,800

The number of employed persons stood at 19,090,800, that is, 766,000 fewer than in the fourth quarter of 2008. In the last 12 months, the number of employed persons decreased by 1,311,500 persons.

The interannual employment rate was -6.43% in the first quarter of 2009, that is, 3.4 points lower than the previous quarter (-3.03%).

Employment decreased for women (256,300 fewer employed women than in the previous quarter), and decreased for men (509,700 fewer employed men).

In the past 12 months, employment decreased for women (218,500 fewer employed women) and decreased for men (1,093,000 fewer).

The number of employed Spaniards decreased by 546,500 persons in the last three months, while the number of employed foreign nationals decreased by 219,500 persons. In the first quarter of 2009, 13.97% of the total employed persons were foreign nationals.

The number of employed persons decreased for all age groups, with those corresponding to young persons experiencing the most intense drops, in relative terms.

By sex, employment among men decreased for all age groups. In the case of women, the number of employed persons increasing only slightly for women aged 55 years old and over.

Regarding the quarter-on-quarter evolution by activity sector¹, the number of persons employed in Agriculture increased by 34,000 persons, to stand at 837,800. Those employed in Industry decreased by 142,500 persons, to a total of 2,900,100. In the Construction sector, a decrease of 202,800 persons was recorded in the first quarter, with employment in the sector standing at 1,978,000 persons. Lastly, the number of those employed in Services stood at 13,374,900, with a decrease of 454,700 employed persons as compared with the previous quarter.

¹ According to the CNAE-2009 classification of activities

By interannual variation, employment decreased by 692,300 persons in Construction (-25.93%), by 413,300 in Industry (-12.47%), by 25,900 in Agriculture (-3.00%) and by 180,000 in Services (-1.33%).

The number of wage earners with temporary contracts decreases by 528,500 persons, while wage earners with permanent contracts increase by 63,400

The total number of wage earners in the first quarter of 2009 was 15,843,100 persons, with a decrease of 465,100 persons as compared with the previous quarter. The number of wage earners with permanent contracts increased by 63,400 persons, to stand at 11,817,300. Wage earners with temporary contracts decreased by 528,500 persons, to a total of 4,025,700.

The temporary employment rate stood at 25.41%, with a decrease of 2.52 points as compared with the previous quarter.

In the past 12 months, the total number of wage earners decreased by 974,400 persons. Wage earners with a permanent contract increased by 70,200 persons, while wage earners with a temporary contract decreased by 1,044,600 persons.

The salary rate rose 18 hundredths, to stand at 82.99%.

Regarding the **working day**, during this quarter, 2,422,900 part-time employed persons were registered, of whom 1,922,300 were women. Part-time employment decreased for women (61,500 fewer), but increased for men (5,400 more).

Full-time employed persons decreased by 709,900 as compared with the previous quarter. The number of full-time employed men decreased by 515,100, while the number of women decreased by 194,800.

The percentage of part-time employed persons was 12.69%, that is, 21 hundredths more than the previous quarter.

Unemployment exceeds four million persons and the unemployment rate increases to 17.36%

Unemployment grew by 802,800 persons this quarter. The total number of unemployed persons stood at 4,010,700, with an increase of 1,836,500 in the last 12 months.

The unemployment rate increased 3.45 points in the first quarter of the year, and reached 17.36% of the active population.

Unemployment increased more for men (507,000) than for women (295,900) this quarter. The total number of unemployed men was 2,195,800 and the number of unemployed women was 1,814,900 persons.

The male unemployment rate was 16.86%, that is, 3.89 points higher than in the fourth quarter of 2008. The female rate increased 2.88 points, standing at 18.01%. In recent quarters, the two rates have progressively converged.

Unemployment grew by 524,700 persons among Spaniards, and by 278,100 persons among foreign nationals. The unemployment rate for Spaniards was 15.24% (2.72 points higher than the previous quarter), and that for foreign nationals was 28.39% (7.13 points higher).

Unemployment increased for all age groups and both sexes this quarter. The greatest increase in absolute values was among men and women aged 25 to 54 years old (with 399,800 and 226,600 more, respectively).

Regarding quarter-on-quarter evolution by sector², unemployment rose in all of them. The Services sector registered 299,000 more unemployed persons, Construction registered 158,800, Industry 85,100 and Agriculture 21,400.

The number of unemployed persons also grew among those who had lost their jobs more than one year prior (by 188,400 persons) and among those seeking their first job (50,200 more unemployed persons).

In interannual comparison, all sectors showed growth in unemployment, thus generating increases of 602,200 unemployed persons in Services, 449,600 in Construction, 206,500 in Industry and 56,300 in Agriculture.

In interannual terms, unemployment also grew among those seeking their first job (by 101,700 persons), and among persons who had lost their jobs more than one year prior (by 420,300).

The unemployment rate for the household reference person rose 3.29 points and stood at 14.47%. That of the spouse or partner increased 2.52 points to 14.42%, and that of children increased 5.02 points, to 26.83%.

More than one million households have all active members unemployed

In the first quarter of 2009, the number of households with all active members working decreased by 504,000 and stood at 9,595,100. In the past 12 months, the decrease was by 1,008,500 households.

The number of households with all active members unemployed increased by 241,200 as compared with the previous quarter, and by 555,800 in the past 12 months. The total number of households in this situation was 1,068,400.

Mobility as related to activity

In terms of quarter-on-quarter mobility as related to activity, it could be observed that the proportion of unemployed persons who were employed three months prior was 27.29%, that is, 4.72 points lower than in the fourth quarter of 2008.

The percentage of employed persons who were also employed in the previous quarter stood at 94.68%, that is, 1.54 points higher than three months ago.

The percentage of employed persons who were unemployed in the fourth quarter of 2008 was 3.18%, that is, 39 hundredths less than that recorded in the previous quarter. The percentage of employed persons who were previously inactive was 2.14%, that is, 1.16 points lower than for the fourth quarter of last year.

The percentage of inactive persons who were employed in the previous quarter decreased 1.33 points, to 4.13%.

² According to the CNAE-1993 classification of activities

52.50% of the unemployed persons this quarter were also unemployed the previous quarter, indicating an increase of 8.31 points.

92.77% of the inactive persons were also inactive three months prior. This percentage was 1.25 points higher than that recorded the previous quarter.

Results by Autonomous Community

The greatest increases in the number of **active persons** this quarter were in Andalucía (22,900) and Canarias (18,700).

The most significant decreases in the number of active persons were in País Vasco (13,100) and Comunitat Valenciana (11,400).

In terms of **employment**, in the first quarter of 2009, there were no increases in any Autonomous Community as compared with the previous quarter. The greatest decreases were in Cataluña (168,800 fewer employed persons), Comunitat Valenciana (120,900) and Comunidad de Madrid (107,000).

In the past 12 months, no Autonomous Community presented an increase in the number of employed persons. The greatest decreases were in Cataluña (304,300 fewer employed persons), Andalucía (240,500), Comunitat Valenciana (199,200), and Comunidad de Madrid (103,100).

In terms of **unemployment**, the greatest rises this quarter were in Cataluña (166,900), Comunidad de Madrid (114,700) and Comunitat Valenciana (109,500).

In terms of interannual variation, the number of unemployed persons increased in all Autonomous Communities. The greatest increases were in Andalucía (382,500 more unemployed persons in the last 12 months), Cataluña (331,900), Comunitat Valenciana (250,100) Comunidad de Madrid (216,100) and Canarias (128,900).

País Vasco (10.33%), Comunidad Foral de Navarra (10.41%), and La Rioja (11.49%) were the Autonomous Communities with the lowest **unemployment rates** in the first quarter of 2009. The highest unemployment rates were recorded in Canarias (26.12%), Andalucía (24.04%) and Extremadura (21.75%).

The lowest female unemployment rates were in País Vasco (11.01%), La Rioja (11.29%) and Comunidad Foral de Navarra (11.33%).

In Región de Murcia, Cataluña, Aragón and La Rioja, the female unemployment rate was lower than the male rate this quarter.

Conversely, among the Communities in which the female rate was higher than the male rate, of note were Extremadura (more than five points higher), Castilla y León (4.88 points higher), Castilla-La Mancha (4.08) and Andalucía (3.65).

The Autonomous Communities with the highest **activity rates** in the first quarter of 2009 were Comunidad de Madrid (65.12%), Cataluña (63.33%) and Illes Balears (63.14%).

The lowest activity rates this quarter were in Principado de Asturias (52.11%), Extremadura (54.07%) and Castilla y León (54.34%).

Results by province

As of the third quarter³ of 2008, the provincial results that had been provided in this Press Release, appear on the INE website, along with the results tables which are usually published.

This information is available from the EAPS (Provincial Results Summary), at the following link:

<http://www.ine.es/daco/daco42/daco4211/epapro0109.pdf>

All the provincial information from this survey is also available at the following links:

In the INEbase database:

<http://www.ine.es/jaxiBD/menu.do?L=1&divi=EPA&his=0&type=db>

In the TEMPUS database:

<http://www.ine.es/menu/redir/GSTConsul.shtml?divi=EPA>

For further information see [INEbase-www.ine.es/en/welcome_en.htm](http://www.ine.es/en/welcome_en.htm) All press releases at: www.ine.es/en/prensa/prensa_en.htm

Press office: Telephone: 91 583 93 63 / 94 08 – Fax: 91 583 90 87 - gprensa@ine.es

Information area: Telephone: 91 583 91 00 – Fax: 91 583 91 58 – www.ine.es/infoine

³ By virtue of the *Multilateral Employment Agreement between the Spanish National Statistics Institute (INE) and the central statistical bodies of the Autonomous Communities for bringing about partnership on the subject of statistics*

Methodological note

General characteristics

The Economically Active Population Survey is a continuous, sample-based study, aimed at family dwellings, and which has been conducted since 1964.

3,588 census sections are chosen for this survey, among the more than 30,000 into which Spain is divided. On average, 18 households are surveyed in each of them, except in Barcelona, Madrid, Sevilla, Valencia and Zaragoza, where the number of interviews is 22. Thus, the sample size is approximately 65,000 dwellings, providing information on some 180,000 persons. This data is collected through personal and telephone interviews, conducted by National Statistics Institute interviewers, attached to the provincial delegations thereof. The information is carefully filtered and processed using computer means. Results are obtained within the month after the end of the reference quarter for the data.

Main definitions

Active persons: persons aged 16 or over who, during the reference week (the week prior to that in which the interview is held), supplied labour for the production of economic goods and services, or were available to do so and carried out actions to incorporate themselves into said production. They are divided into employed and unemployed persons.

Employed persons: persons aged 16 or over who, during the reference week, worked for at least one hour, in exchange for payment (salary, wage, business benefit, etc.) in cash or in kind. Persons who, having a job, had been temporarily absent from it due to illnesses, vacation, etc. are also employed persons.

Employed persons are classified, considering their professional status, as non-wage earners (employers, businessmen without wage earners, and independent workers, cooperative members, family assistance) and wage earners (public or private).

Considering the length of the working day, employed persons are classified as full-time and part-time employed persons. The usual working week cannot be shorter than 30 hours in the first case, nor exceed 35 hours in the second.

Wage earners are classified into permanent and temporary. For the latter, the end of their contract or work relationship is set by means of objective conditions, such as the expiry of a certain period of time, the completion of a specific task, etc.

A significant category within employment is that of **time-related underemployment**, defined in the 16th International Labour Statisticians Conference (Geneva, 1998). The EAPS considers persons suffering time-related underemployment as employed persons who would like to work more hours, who are available to work more hours and whose effective working hours in the reference week are less than the number of hours usually worked by employed persons working full-time in the same branch of activity as that in which the underemployed person performs his or her main job.

Unemployed persons: Individuals, aged 16 or over who, during the reference week, were jobless, available for work, and actively looking for a job. Persons who might have already found a job and are waiting to start, are also considered as unemployed, provided that they fulfil the first two conditions.

According to European Commission Regulation 1897/2000, the following are considered as active search methods in the four weeks prior to the interview:

- Being in contact with a public employment office for the purpose of finding work, whatever part they play in the initiative (the renewal of registration due to purely administrative reasons does not constitute active planning).
- Being in contact with a private office (temporary employment office, specialised contracting company, ...) with the objective of finding work.
- Having sent an application directly to employers.
- Having searched via personal relations and trade unions,
- Having advertised oneself or responded to newspaper advertisements.
- Having studied employment offers.
- Having taken part in a test, public exam or interview in the framework of a contracting procedure.
- Having looked for land, premises or material.
- Having taken steps to obtain permits, licences or financial resources.

Inactive persons: Individuals aged 16 or over not included in any of the above categories.

Annex

Note on the use of the new National Classification of Economic Activities NACE-2009 in the encoding of the Economically Active Population Survey (EAPS) since the first quarter of 2008

Adaptation to the European Union new classification of economic activities has led to a new encoding of the variables for the Economically Active Population Survey relating to the branch of activity as of the first quarter of 2008.

The variables affected by this new encoding are as follows:

- Activity of the main job of employed persons
- Activity of the second job (employed persons with more than one job)
- Activity in the last job (unemployed and inactive persons who left their last job less than one year ago)

This implies that several branches of activity have come to form part of different sectors. Thus, to quote a few examples, the "Upkeep of gardens" branch of activity, which was until now classified as part of the agricultural sector, has now become a part of the services sector. The "Development and selling of real estate" branch has gone from the services sector to the construction sector. "Collection and treatment of waste water" has gone from the services sector to industry, and conversely, "Publishing" has gone from industry to services.

At the following link on the INE website, complete information is available regarding all the changes arising from the new encoding of branches of activity:

http://www.ine.es/daco/daco42/clasificaciones/rev.1/correspondencia_cnae.pdf

Origin of the new encoding

The current classification of economic activities for statistical purposes within the European Union, known as NACE Rev.2, was approved by Council and Parliament Regulation No.1893/2006, of 20 December. In order to ensure harmonised implementation of the classification in all Member States, **European Commission Regulation No.973/2007 of 20 August was approved; this stipulated the use of the aforementioned Classification in the Community Labour Force Survey (taken in Spain from the Economically Active Population Survey) beginning in the year 2008.**

The Member States, in order to be able to adapt the European classification to their reality, have compiled national versions which must be compatible with NACE Rev.2. The National Classification of Economic Activities CNAE-2009, approved in Royal Decree 475/2007 of 13 April 2007 (Official Spanish Gazette of 28 April 2007), is the national version of NACE Rev. 2 in Spain.

Therefore, the variables for the Economically Active Population Survey relating to the branch of activity are now encoded in accordance with the new NACE-2009.

Information link

In order to provide sufficient information to link the old classification to the new one, the INE has carried out double-activity encoding over the four quarters of 2008, in order to be able to continue as of 2009 solely with the new classification.

In this way, tables by economic activity may be calculated in accordance with both classifications and have a link year between the two. On the INE website (specifically, in the INEbase database) results have been published from the old and new classifications for the four quarters of 2008.

Similarly, in the EAPS press releases in which information appears by economic sector, both classifications will also be used throughout this year.

Economically Active Population Survey First Quarter 2009

National results

(Continues)

| | Current quarter | Variation on previous quarter | | Variation on same quarter, previous year | |
|--|--------------------|----------------------------------|------------|---|------------|
| | | Difference | Percentage | Difference | Percentage |
| 1. Population aged 16 years and over by sex and labour status | | | | | |
| BOTH SEXES | | | | | |
| Population aged 16 years and over | 38,408.6 | 52.2 | 0.14 | 365.9 | 0.96 |
| Active population | 23,101.5 | 36.8 | 0.16 | 525.0 | 2.33 |
| - Employed | 19,090.8 | -766.0 | -3.86 | -1,311.5 | -6.43 |
| - Unemployed | 4,010.7 | 802.8 | 25.03 | 1,836.5 | 84.47 |
| Inactive | 15,307.1 | 15.3 | 0.10 | -159.1 | -1.03 |
| Activity rate | 60.15 | 0.01 | - | 0.80 | - |
| Unemployment rate | 17.36 | 3.45 | - | 7.73 | - |
| Population aged 16 to 64 years | 30,926.5 | 25.1 | 0.08 | 256.4 | 0.84 |
| Activity rate (16-64) | 74.20 | 0.08 | - | 1.08 | - |
| Unemployment rate (16-64) | 17.46 | 3.47 | - | 7.78 | - |
| Employment rate (16-64) | 61.24 | -2.51 | - | -4.80 | - |
| MALES | | | | | |
| Population aged 16 years and over | 18,848.5 | 23.2 | 0.12 | 178.2 | 0.95 |
| Active population | 13,026.7 | -2.8 | -0.02 | 84.2 | 0.65 |
| - Employed | 10,830.9 | -509.7 | -4.49 | -1,093.0 | -9.17 |
| - Unemployed | 2,195.8 | 507.0 | 30.02 | 1,177.2 | 115.57 |
| Inactive | 5,821.8 | 26.0 | 0.45 | 94.0 | 1.64 |
| Activity rate | 69.11 | -0.10 | - | -0.21 | - |
| Unemployment rate | 16.86 | 3.89 | - | 8.99 | - |
| Population aged 16 to 64 years | 15,646.8 | 10.6 | 0.07 | 127.1 | 0.82 |
| Activity rate (16-64) | 82.67 | -0.05 | - | -0.10 | - |
| Unemployment rate (16-64) | 16.96 | 3.92 | - | 9.04 | - |
| Employment rate (16-64) | 68.65 | -3.29 | - | -7.56 | - |
| FEMALES | | | | | |
| Population aged 16 years and over | 19,560.1 | 28.9 | 0.15 | 187.7 | 0.97 |
| Active population | 10,074.8 | 39.6 | 0.39 | 440.9 | 4.58 |
| - Employed | 8,259.9 | -256.3 | -3.01 | -218.5 | -2.58 |
| - Unemployed | 1,814.9 | 295.9 | 19.48 | 659.3 | 57.06 |
| Inactive | 9,485.3 | -10.7 | -0.11 | -253.1 | -2.60 |
| Activity rate | 51.51 | 0.13 | - | 1.78 | - |
| Unemployment rate | 18.01 | 2.88 | - | 6.02 | - |
| Population aged 16 to 64 years | 15,279.7 | 14.5 | 0.09 | 129.2 | 0.85 |
| Activity rate (16-64) | 65.51 | 0.22 | - | 2.29 | - |
| Unemployment rate (16-64) | 18.11 | 2.89 | - | 6.06 | - |
| Employment rate (16-64) | 53.65 | -1.71 | - | -1.96 | - |
| 2. Spanish population¹ aged 16 years and over by labour status | | | | | |
| SPANISH POPULATION AGED 16 YEARS AND OVER | 33,632.7 | 18.3 | 0.05 | 88.8 | 0.26 |
| Active population | 19,377.0 | -21.7 | -0.11 | 246.4 | 1.29 |
| - Employed | 16,423.8 | -546.5 | -3.22 | -1,037.3 | -5.94 |
| - Unemployed | 2,953.2 | 524.7 | 21.61 | 1,283.7 | 76.89 |
| Inactive | 14,255.8 | 40.1 | 0.28 | -157.6 | -1.09 |
| Activity rate | 57.61 | -0.10 | - | 0.58 | - |
| Unemployment rate | 15.24 | 2.72 | - | 6.51 | - |

1 including dual nationality

National results

(Continuation)

| | Current quarter | Variation on previous quarter | | Variation on same quarter, previous year | |
|--|-----------------|-------------------------------|------------|--|------------|
| | | Difference | Percentage | Difference | Percentage |
| 3. Foreign population aged 16 years and over by labour status | | | | | |
| FOREIGN POPULATION AGED 16 YEARS AND OVER | 4,775.9 | 33.8 | 0.71 | 277.2 | 6.16 |
| Active population | 3,724.5 | 58.6 | 1.60 | 278.7 | 8.09 |
| - Employed | 2,667.0 | -219.5 | -7.61 | -274.2 | -9.32 |
| - Unemployed | 1,057.6 | 278.1 | 35.68 | 552.8 | 109.54 |
| Inactive | 1,051.4 | -24.8 | -2.30 | -1.5 | -0.14 |
| Activity rate | 77.99 | 0.68 | - | 1.39 | - |
| Unemployment rate | 28.39 | 7.13 | - | 13.75 | - |

4. Employed by sex, age group and economic sector

| | | | | | |
|----------------|----------|--------|--------|----------|--------|
| BOTH SEXES | 19,090.8 | -766.0 | -3.86 | -1,311.5 | -6.43 |
| 16 to 19 years | 213.8 | -51.2 | -19.33 | -134.0 | -38.53 |
| 20 to 24 years | 1,245.3 | -153.6 | -10.98 | -256.8 | -17.10 |
| 25 to 29 years | 2,417.5 | -153.2 | -5.96 | -355.8 | -12.83 |
| 30 to 34 years | 2,997.4 | -111.6 | -3.59 | -247.7 | -7.63 |
| 35 to 39 years | 2,842.3 | -107.0 | -3.63 | -172.4 | -5.72 |
| 40 to 44 years | 2,684.6 | -59.4 | -2.16 | -96.3 | -3.46 |
| 45 to 49 years | 2,406.0 | -54.5 | -2.22 | -56.7 | -2.30 |
| 50 to 54 years | 1,935.5 | -32.6 | -1.66 | -2.5 | -0.13 |
| 55 and over | 2,348.5 | -42.8 | -1.79 | 10.8 | 0.46 |
| MALES | 10,830.9 | -509.7 | -4.49 | -1,093.0 | -9.17 |
| 16 to 19 years | 129.8 | -24.8 | -16.06 | -90.8 | -41.17 |
| 20 to 24 years | 666.5 | -84.0 | -11.19 | -171.3 | -20.45 |
| 25 to 29 years | 1,263.4 | -89.6 | -6.62 | -247.3 | -16.37 |
| 30 to 34 years | 1,663.9 | -90.4 | -5.15 | -195.9 | -10.53 |
| 35 to 39 years | 1,606.0 | -75.4 | -4.49 | -152.0 | -8.65 |
| 40 to 44 years | 1,514.3 | -48.3 | -3.09 | -110.5 | -6.80 |
| 45 to 49 years | 1,354.1 | -38.7 | -2.78 | -66.7 | -4.69 |
| 50 to 54 years | 1,149.4 | -10.9 | -0.94 | -18.2 | -1.56 |
| 55 and over | 1,483.4 | -47.6 | -3.11 | -40.4 | -2.65 |
| FEMALES | 8,259.9 | -256.3 | -3.01 | -218.5 | -2.58 |
| 16 to 19 years | 84.0 | -26.4 | -23.92 | -43.2 | -33.95 |
| 20 to 24 years | 578.8 | -69.6 | -10.74 | -85.5 | -12.87 |
| 25 to 29 years | 1,154.1 | -63.6 | -5.23 | -108.5 | -8.59 |
| 30 to 34 years | 1,333.5 | -21.2 | -1.57 | -51.8 | -3.74 |
| 35 to 39 years | 1,236.3 | -31.6 | -2.49 | -20.4 | -1.62 |
| 40 to 44 years | 1,170.3 | -11.0 | -0.93 | 14.2 | 1.23 |
| 45 to 49 years | 1,051.9 | -15.9 | -1.48 | 9.9 | 0.95 |
| 50 to 54 years | 786.1 | -21.7 | -2.69 | 15.6 | 2.03 |
| 55 and over | 865.1 | 4.8 | 0.56 | 51.1 | 6.28 |
| TOTAL EMPLOYED | 19,090.8 | -766.0 | -3.86 | -1,311.5 | -6.43 |
| Agriculture | 837.8 | 34.0 | 4.23 | -25.9 | -3.00 |
| Industry | 2,900.1 | -142.5 | -4.68 | -413.3 | -12.47 |
| Construction | 1,978.0 | -202.8 | -9.30 | -692.3 | -25.93 |
| Services | 13,374.9 | -454.7 | -3.29 | -180.0 | -1.33 |

National results

(Continuation)

| | Current quarter | Variation on previous quarter | | Variation on same quarter, previous year | |
|--|-----------------|-------------------------------|------------|--|------------|
| | | Difference | Percentage | Difference | Percentage |

5. Employed by professional status, type of contract and working hours

| | | | | | |
|---------------------------|----------|--------|--------|----------|--------|
| TOTAL EMPLOYED | 19,090.8 | -766.0 | -3.86 | -1,311.5 | -6.43 |
| Self-employed workers | 3,240.5 | -294.5 | -8.33 | -334.2 | -9.35 |
| - Employers | 1,100.3 | -65.0 | -5.58 | -39.2 | -3.44 |
| - Independent workers | 1,924.6 | -185.6 | -8.80 | -222.2 | -10.35 |
| - Cooperatives members | 31.5 | -30.9 | -49.56 | -40.0 | -55.98 |
| - Family workers | 184.1 | -12.9 | -6.57 | -32.8 | -15.13 |
| Employees | 15,843.1 | -465.1 | -2.85 | -974.4 | -5.79 |
| - With a permanent job | 11,817.3 | 63.4 | 0.54 | 70.2 | 0.60 |
| - With a temporary job | 4,025.7 | -528.5 | -11.61 | -1,044.6 | -20.60 |
| Others | 7.2 | -6.4 | -47.06 | -2.9 | -28.96 |
| FULL-TIME EMPLOYED | 16,667.9 | -709.9 | -4.09 | -1,284.5 | -7.16 |
| Males | 10,330.3 | -515.1 | -4.75 | -1,099.8 | -9.62 |
| Females | 6,337.6 | -194.8 | -2.98 | -184.7 | -2.83 |
| PART-TIME EMPLOYED | 2,422.9 | -56.1 | -2.26 | -27.0 | -1.10 |
| Males | 500.6 | 5.4 | 1.09 | 6.8 | 1.38 |
| Females | 1,922.3 | -61.5 | -3.10 | -33.8 | -1.73 |

6. Unemployed by sex, age group, and economic sector

| | | | | | |
|-------------------------------------|---------|-------|-------|---------|--------|
| BOTH SEXES | 4,010.7 | 802.8 | 25.03 | 1,836.5 | 84.47 |
| 16 to 19 years | 255.8 | 32.0 | 14.29 | 85.4 | 50.09 |
| 20 to 24 years | 552.7 | 91.7 | 19.88 | 223.1 | 67.71 |
| 25 to 54 years | 2,927.5 | 626.3 | 27.22 | 1,410.5 | 92.98 |
| 55 and over | 274.7 | 52.9 | 23.83 | 117.6 | 74.79 |
| MALES | 2,195.8 | 507.0 | 30.02 | 1,177.2 | 115.57 |
| 16 to 19 years | 145.7 | 21.3 | 17.14 | 56.7 | 63.70 |
| 20 to 24 years | 305.9 | 49.3 | 19.20 | 139.1 | 83.42 |
| 25 to 54 years | 1,587.6 | 399.8 | 33.66 | 909.3 | 134.06 |
| 55 and over | 156.6 | 36.6 | 30.50 | 72.1 | 85.25 |
| FEMALES | 1,814.9 | 295.9 | 19.48 | 659.3 | 57.06 |
| 16 to 19 years | 110.1 | 10.7 | 10.73 | 28.7 | 35.22 |
| 20 to 24 years | 246.8 | 42.4 | 20.73 | 84.0 | 51.61 |
| 25 to 54 years | 1,339.9 | 226.6 | 20.35 | 501.2 | 59.75 |
| 55 and over | 118.1 | 16.3 | 15.97 | 45.5 | 62.62 |
| TOTAL UNEMPLOYED | 4,010.7 | 802.8 | 25.03 | 1,836.5 | 84.47 |
| Agriculture | 170.5 | 21.4 | 14.34 | 56.3 | 49.33 |
| Industry | 373.1 | 85.1 | 29.54 | 206.5 | 123.88 |
| Construction | 743.7 | 158.8 | 27.15 | 449.6 | 152.87 |
| Services | 1,446.4 | 299.0 | 26.05 | 602.2 | 71.33 |
| Lost their job more than 1 year ago | 977.5 | 188.4 | 23.88 | 420.3 | 75.43 |
| First job seekers | 299.4 | 50.2 | 20.13 | 101.7 | 51.40 |

National results

(Conclusion)

| | Current quarter | Variation on previous quarter | | Variation on same quarter, previous year | |
|--|-----------------|-------------------------------|------------|--|------------|
| | | Difference | Percentage | Difference | Percentage |

7. Unemployment rate by relationship with the reference person

| TOTAL | 17.36 | 3.45 | - | 7.73 | - |
|-------------------|-------|------|---|-------|---|
| Reference person | 14.47 | 3.29 | - | 7.02 | - |
| Spouse or partner | 14.42 | 2.52 | - | 6.04 | - |
| Child | 26.83 | 5.02 | - | 11.65 | - |
| Other relatives | 24.66 | 5.22 | - | 10.73 | - |
| Unrelated persons | 19.07 | 4.81 | - | 9.46 | - |

8. Household data

| TOTAL HOUSEHOLDS | 16,983.6 | 87.6 | 0.52 | 411.2 | 2.48 |
|--|----------|--------|-------|----------|--------|
| Households with at least one active member | 12,853.3 | 62.7 | 0.49 | 338.2 | 2.70 |
| - All member employed | 9,595.1 | -504.0 | -4.99 | -1,008.5 | -9.51 |
| - All member unemployed | 1,068.4 | 241.2 | 29.16 | 555.8 | 108.45 |
| Households without any active population | 4,130.3 | 24.9 | 0.61 | 73.0 | 1.80 |

Mobility according to activity in current and previous quarter

| Classification in previous quarter | Classification in current quarter | | | |
|------------------------------------|-----------------------------------|----------|------------|----------|
| | Total | Employed | Unemployed | Inactive |
| BOTH SEXES | | | | |
| Total | 100.00 | 100.00 | 100.00 | 100.00 |
| Employed | 51.21 | 94.68 | 27.29 | 4.13 |
| Unemployed | 8.07 | 3.18 | 52.50 | 3.10 |
| Inactive | 40.72 | 2.14 | 20.21 | 92.77 |
| MALES | | | | |
| Total | 100.00 | 100.00 | 100.00 | 100.00 |
| Employed | 59.92 | 95.72 | 31.48 | 4.42 |
| Unemployed | 8.53 | 2.91 | 55.06 | 2.64 |
| Inactive | 31.55 | 1.38 | 13.46 | 92.94 |
| FEMALES | | | | |
| Total | 100.00 | 100.00 | 100.00 | 100.00 |
| Employed | 42.87 | 93.31 | 22.44 | 3.95 |
| Unemployed | 7.63 | 3.55 | 49.53 | 3.38 |
| Inactive | 49.50 | 3.14 | 28.02 | 92.66 |

Grossing up factors of current quarter (forward analysis)

Results by Autonomous Communities

(Continues)

| | Current quarter | Variation on previous quarter | | Variation on same quarter, previous year | |
|---|--------------------|----------------------------------|------------|---|------------|
| | | Difference | Percentage | Difference | Percentage |
| | | | | | |
| 1. Population aged 16 years and over | | | | | |
| TOTAL | 38,408.6 | 52.2 | 0.14 | 365.9 | 0.96 |
| Andalucía | 6,703.5 | 13.0 | 0.19 | 78.2 | 1.18 |
| Aragón | 1,117.1 | 1.9 | 0.17 | 11.0 | 0.99 |
| Asturias (Principado de) | 934.8 | -0.8 | -0.08 | -1.9 | -0.20 |
| Balears (Illes) | 887.6 | 3.4 | 0.38 | 19.6 | 2.25 |
| Canarias | 1,728.6 | 5.4 | 0.31 | 29.9 | 1.76 |
| Cantabria | 495.1 | 0.6 | 0.12 | 3.6 | 0.73 |
| Castilla y León | 2,166.7 | 0.2 | 0.01 | 4.5 | 0.21 |
| Castilla-La Mancha | 1,691.0 | 7.0 | 0.42 | 35.3 | 2.13 |
| Cataluña | 6,083.5 | -1.9 | -0.03 | 16.1 | 0.27 |
| Comunitat Valenciana | 4,183.9 | 11.7 | 0.28 | 71.0 | 1.73 |
| Extremadura | 903.8 | 0.5 | 0.06 | 2.5 | 0.28 |
| Galicia | 2,387.5 | -0.9 | -0.04 | 1.1 | 0.05 |
| Madrid (Comunidad de) | 5,236.2 | 9.0 | 0.17 | 71.3 | 1.38 |
| Murcia (Región de) | 1,174.7 | 3.4 | 0.29 | 22.3 | 1.94 |
| Navarra (Comunidad Foral de) | 510.6 | 1.1 | 0.21 | 5.5 | 1.10 |
| País Vasco | 1,827.4 | -2.2 | -0.12 | -7.3 | -0.40 |
| Rioja (La) | 266.8 | 0.4 | 0.13 | 2.3 | 0.87 |
| Ceuta | 57.0 | 0.0 | 0.07 | 0.4 | 0.79 |
| Melilla | 52.8 | 0.3 | 0.55 | 0.3 | 0.65 |

2. Active population

| | | | | | |
|------------------------------|----------|-------|-------|-------|-------|
| TOTAL | 23,101.5 | 36.8 | 0.16 | 525.0 | 2.33 |
| Andalucía | 3,927.7 | 22.9 | 0.59 | 142.1 | 3.75 |
| Aragón | 661.5 | -3.1 | -0.46 | 10.2 | 1.56 |
| Asturias (Principado de) | 487.1 | -4.7 | -0.95 | 1.4 | 0.29 |
| Balears (Illes) | 560.5 | -3.6 | -0.64 | 17.3 | 3.19 |
| Canarias | 1,074.2 | 18.7 | 1.77 | 42.0 | 4.07 |
| Cantabria | 283.7 | 2.2 | 0.78 | 4.0 | 1.44 |
| Castilla y León | 1,177.4 | -8.9 | -0.75 | 6.0 | 0.51 |
| Castilla-La Mancha | 973.8 | 8.3 | 0.86 | 37.5 | 4.01 |
| Cataluña | 3,852.9 | -1.9 | -0.05 | 27.6 | 0.72 |
| Comunitat Valenciana | 2,558.4 | -11.4 | -0.44 | 50.9 | 2.03 |
| Extremadura | 488.7 | 5.4 | 1.11 | 12.4 | 2.61 |
| Galicia | 1,331.1 | 7.1 | 0.53 | 32.8 | 2.52 |
| Madrid (Comunidad de) | 3,409.9 | 7.6 | 0.22 | 113.1 | 3.43 |
| Murcia (Región de) | 730.4 | 5.2 | 0.71 | 22.4 | 3.16 |
| Navarra (Comunidad Foral de) | 311.0 | 1.9 | 0.63 | 0.9 | 0.29 |
| País Vasco | 1,050.8 | -13.1 | -1.23 | -2.0 | -0.19 |
| Rioja (La) | 160.5 | 0.4 | 0.24 | 3.4 | 2.14 |
| Ceuta | 34.2 | 1.6 | 4.76 | 3.9 | 12.71 |
| Melilla | 27.9 | 2.2 | 8.36 | -0.8 | -2.71 |

* Data below 5000 are subject to strong variations, due to sampling error

Results by Autonomous Communities

(Conclusion)

| | Current quarter | Variation on previous quarter | | Variation on same quarter, previous year | |
|------------------------------|-----------------|-------------------------------|------------|--|------------|
| | | Difference | Percentage | Difference | Percentage |
| 3. Employed | | | | | |
| TOTAL | 19,090.8 | -766.0 | -3.86 | -1,311.5 | -6.43 |
| Andalucía | 2,983.5 | -70.8 | -2.32 | -240.5 | -7.46 |
| Aragón | 575.6 | -25.4 | -4.22 | -36.7 | -6.00 |
| Asturias (Principado de) | 428.6 | -14.2 | -3.21 | -15.9 | -3.57 |
| Balears (Illes) | 449.7 | -44.9 | -9.07 | -35.1 | -7.23 |
| Canarias | 793.6 | -38.3 | -4.61 | -86.9 | -9.86 |
| Cantabria | 248.5 | -8.0 | -3.11 | -13.4 | -5.10 |
| Castilla y León | 1,014.6 | -38.7 | -3.67 | -61.2 | -5.69 |
| Castilla-La Mancha | 797.0 | -24.6 | -2.99 | -49.6 | -5.86 |
| Cataluña | 3,230.2 | -168.8 | -4.97 | -304.3 | -8.61 |
| Comunitat Valenciana | 2,067.2 | -120.9 | -5.53 | -199.2 | -8.79 |
| Extremadura | 382.4 | -14.1 | -3.56 | -25.3 | -6.21 |
| Galicia | 1,168.5 | -26.6 | -2.23 | -21.5 | -1.81 |
| Madrid (Comunidad de) | 2,949.9 | -107.0 | -3.50 | -103.1 | -3.38 |
| Murcia (Región de) | 589.0 | -23.7 | -3.86 | -51.7 | -8.07 |
| Navarra (Comunidad Foral de) | 278.6 | -5.4 | -1.89 | -12.7 | -4.37 |
| País Vasco | 942.2 | -33.1 | -3.40 | -51.4 | -5.17 |
| Rioja (La) | 142.0 | -2.4 | -1.69 | -5.3 | -3.57 |
| Ceuta | 28.7 | 1.4 | 5.25 | 3.5 | 13.98 |
| Melilla | 20.8 | -0.6 | -2.74 | -1.3 | -6.04 |

4. Unemployed

| | | | | | |
|------------------------------|---------|-------|-------|---------|--------|
| TOTAL | 4,010.7 | 802.8 | 25.03 | 1,836.5 | 84.47 |
| Andalucía | 944.1 | 93.8 | 11.03 | 382.5 | 68.12 |
| Aragón | 85.9 | 22.3 | 35.09 | 46.9 | 120.31 |
| Asturias (Principado de) | 58.5 | 9.6 | 19.57 | 17.2 | 41.80 |
| Balears (Illes) | 110.8 | 41.3 | 59.37 | 52.4 | 89.84 |
| Canarias | 280.6 | 57.0 | 25.51 | 128.9 | 84.96 |
| Cantabria | 35.2 | 10.2 | 40.60 | 17.4 | 97.34 |
| Castilla y León | 162.8 | 29.7 | 22.35 | 67.2 | 70.34 |
| Castilla-La Mancha | 176.8 | 32.9 | 22.84 | 87.2 | 97.27 |
| Cataluña | 622.7 | 166.9 | 36.62 | 331.9 | 114.11 |
| Comunitat Valenciana | 491.2 | 109.5 | 28.69 | 250.1 | 103.78 |
| Extremadura | 106.3 | 19.5 | 22.46 | 37.8 | 55.09 |
| Galicia | 162.7 | 33.7 | 26.10 | 54.3 | 50.08 |
| Madrid (Comunidad de) | 459.9 | 114.7 | 33.21 | 216.1 | 88.65 |
| Murcia (Región de) | 141.4 | 28.8 | 25.62 | 74.1 | 110.03 |
| Navarra (Comunidad Foral de) | 32.4 | 7.3 | 29.09 | 13.6 | 72.69 |
| País Vasco | 108.6 | 20.0 | 22.61 | 49.4 | 83.40 |
| Rioja (La) | 18.4 | 2.8 | 18.12 | 8.6 | 87.70 |
| Ceuta | 5.4 | 0.1 | 2.24 | 0.3 | 6.43 |
| Melilla | 7.1 | 2.7 | 63.05 | 0.6 | 8.59 |

* Data below 5,000 are subject to strong variations, due to sampling error

Results by Autonomous Communities

5. Employed and unemployed by sex. Activity and unemployment rates.

(Absolute figures in thousands and rates in percentage)

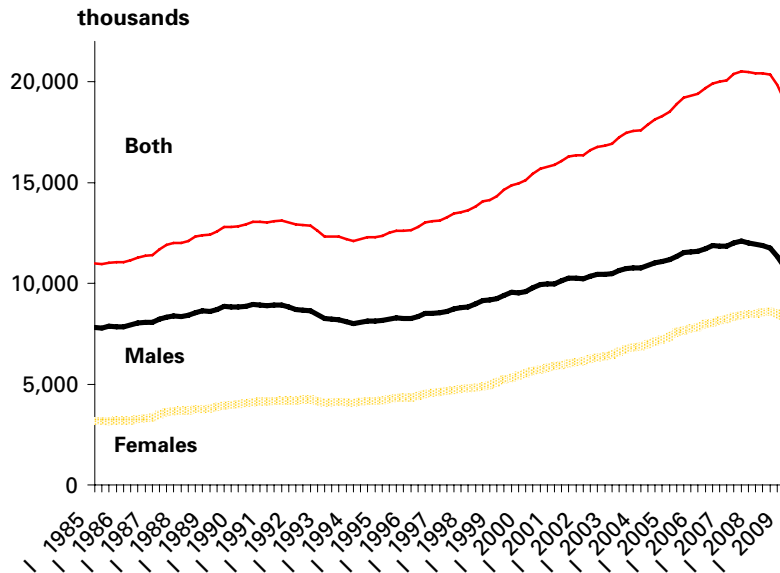
| | Both sexes | | | | Males | | | | Females | | | |
|------------------------------|------------|------------|---------------|------------|----------|------------|---------------|------------|----------|------------|---------------|------------|
| | Employed | Unemployed | Activity rate | Unem. rate | Employed | Unemployed | Activity rate | Unem. Rate | Employed | Unemployed | Activity rate | Unem. Rate |
| TOTAL | 19,090.8 | 4,010.7 | 60.15 | 17.36 | 10,830.9 | 2,195.8 | 69.11 | 16.86 | 8,259.9 | 1,814.9 | 51.51 | 18.01 |
| Andalucía | 2,983.5 | 944.1 | 58.59 | 24.04 | 1,757.5 | 510.1 | 68.75 | 22.50 | 1,226.0 | 434.0 | 48.75 | 26.15 |
| Aragón | 575.6 | 85.9 | 59.21 | 12.98 | 330.7 | 49.8 | 68.44 | 13.08 | 244.9 | 36.1 | 50.07 | 12.85 |
| Asturias | 428.6 | 58.5 | 52.11 | 12.01 | 237.0 | 29.0 | 59.96 | 10.92 | 191.7 | 29.4 | 45.01 | 13.32 |
| Balears (Illes) | 449.7 | 110.8 | 63.14 | 19.76 | 259.0 | 59.9 | 71.88 | 18.78 | 190.7 | 50.9 | 54.41 | 21.06 |
| Canarias | 793.6 | 280.6 | 62.14 | 26.12 | 453.9 | 156.3 | 70.94 | 25.61 | 339.7 | 124.3 | 53.43 | 26.79 |
| Cantabria | 248.5 | 35.2 | 57.30 | 12.42 | 139.1 | 19.5 | 65.84 | 12.28 | 109.4 | 15.8 | 49.22 | 12.59 |
| Castilla y Leon | 1,014.6 | 162.8 | 54.34 | 13.83 | 598.6 | 79.6 | 63.40 | 11.74 | 416.0 | 83.2 | 45.51 | 16.66 |
| Castilla-La Mancha | 797.0 | 176.8 | 57.59 | 18.15 | 487.3 | 96.4 | 68.57 | 16.52 | 309.8 | 80.4 | 46.45 | 20.60 |
| Cataluña | 3,230.2 | 622.7 | 63.33 | 16.16 | 1,777.6 | 362.4 | 71.65 | 16.94 | 1,452.6 | 260.3 | 55.31 | 15.19 |
| Comunitat Valenciana | 2,067.2 | 491.2 | 61.15 | 19.20 | 1,179.5 | 271.0 | 69.98 | 18.69 | 887.7 | 220.1 | 52.47 | 19.87 |
| Extremadura | 382.4 | 106.3 | 54.07 | 21.75 | 232.1 | 56.1 | 64.64 | 19.48 | 150.3 | 50.1 | 43.77 | 25.02 |
| Galicia | 1,168.5 | 162.7 | 55.75 | 12.22 | 637.7 | 81.9 | 63.08 | 11.39 | 530.8 | 80.7 | 49.05 | 13.20 |
| Madrid (Comunid.de) | 2,949.9 | 459.9 | 65.12 | 13.49 | 1,599.0 | 244.3 | 73.18 | 13.26 | 1,350.9 | 215.6 | 57.65 | 13.76 |
| Murcia (Región de) | 589.0 | 141.4 | 62.18 | 19.36 | 342.7 | 88.6 | 72.68 | 20.54 | 246.3 | 52.9 | 51.46 | 17.67 |
| Navarra (C. Foral de) | 278.6 | 32.4 | 60.90 | 10.41 | 160.5 | 17.3 | 70.08 | 9.73 | 118.1 | 15.1 | 51.84 | 11.33 |
| País Vasco | 942.2 | 108.6 | 57.50 | 10.33 | 524.6 | 56.9 | 65.70 | 9.79 | 417.6 | 51.7 | 49.81 | 11.01 |
| Rioja (La) | 142.0 | 18.4 | 60.16 | 11.49 | 82.2 | 10.8 | 69.48 | 11.64 | 59.9 | 7.6 | 50.77 | 11.29 |
| Ceuta | 28.7 | 5.4 | 60.01 | 15.93 | 18.3 | 2.5 | 72.07 | 11.80 | 10.4 | 3.0 | 47.62 | 22.34 |
| Melilla | 20.8 | 7.1 | 52.83 | 25.39 | 13.6 | 3.2 | 67.51 | 19.27 | 7.2 | 3.8 | 39.65 | 34.72 |

* Data below 5,000 are subject to strong variations, due to sampling errors

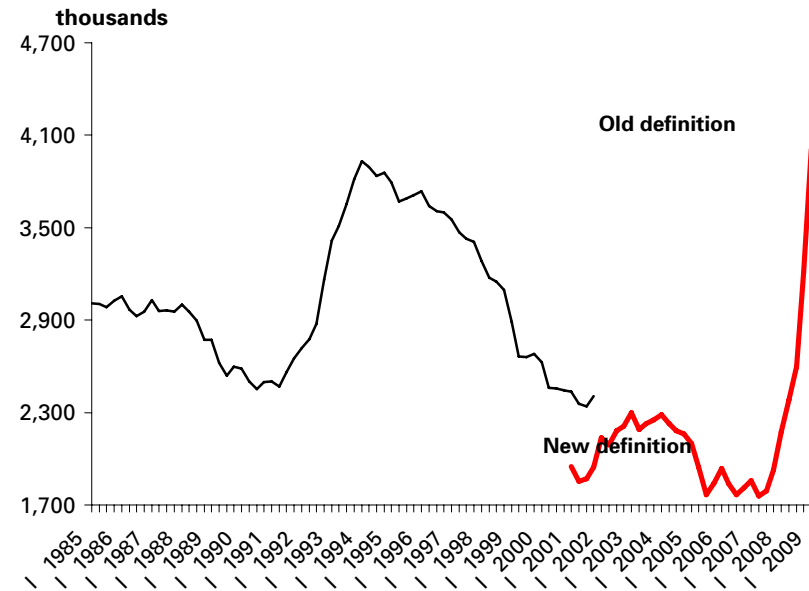
Employed and unemployed by sex

APS First Quarter 2009

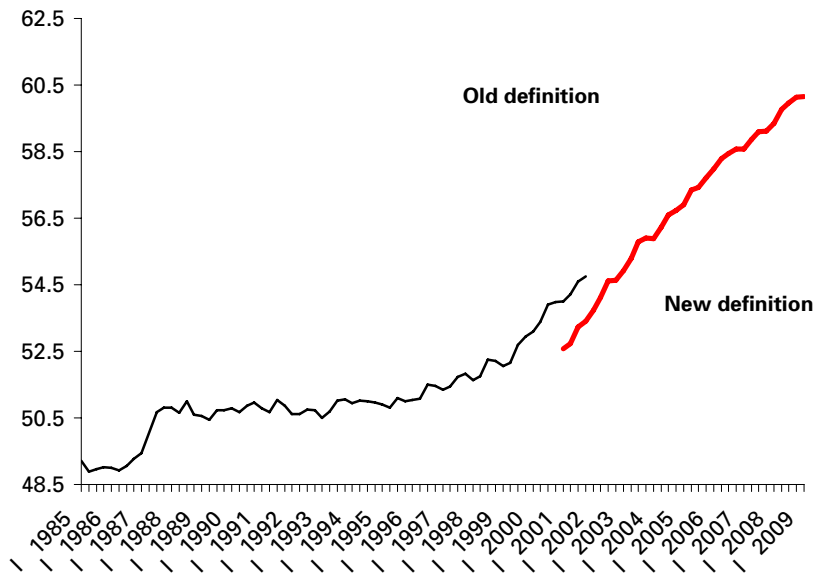
Employment



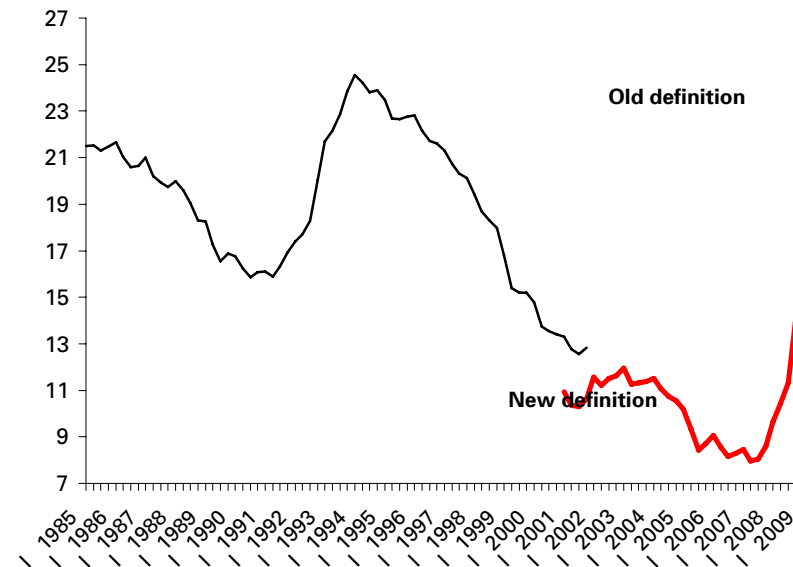
Unemployment



Activity rate



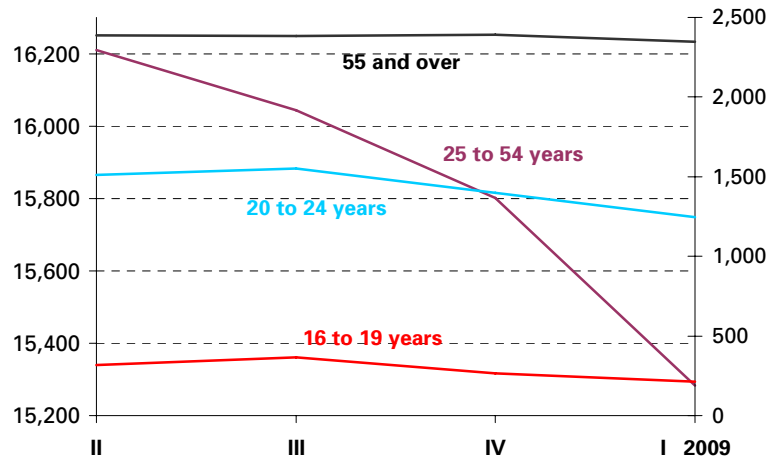
Unemployment rate



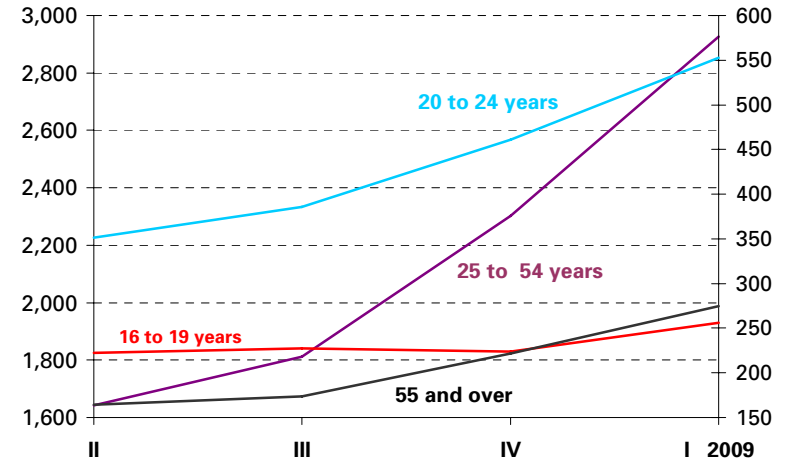
Employed and Unemployed by age

APS First Quarter 2009

Employment

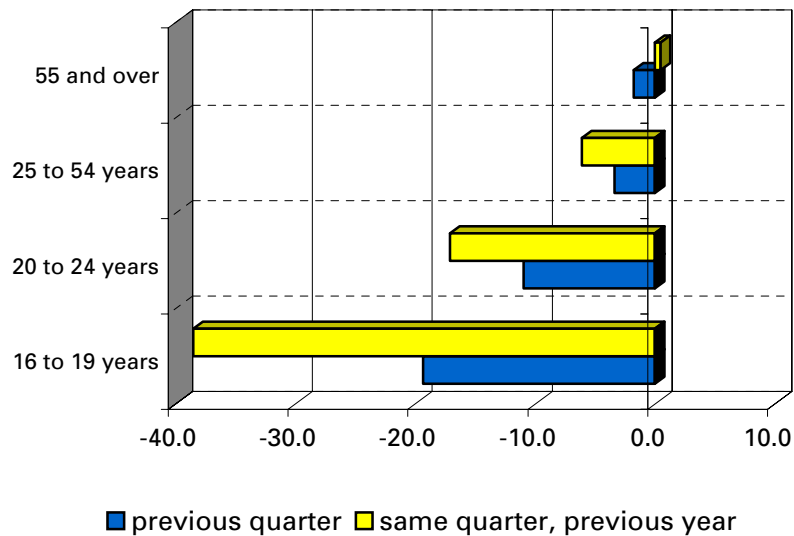


Unemployment

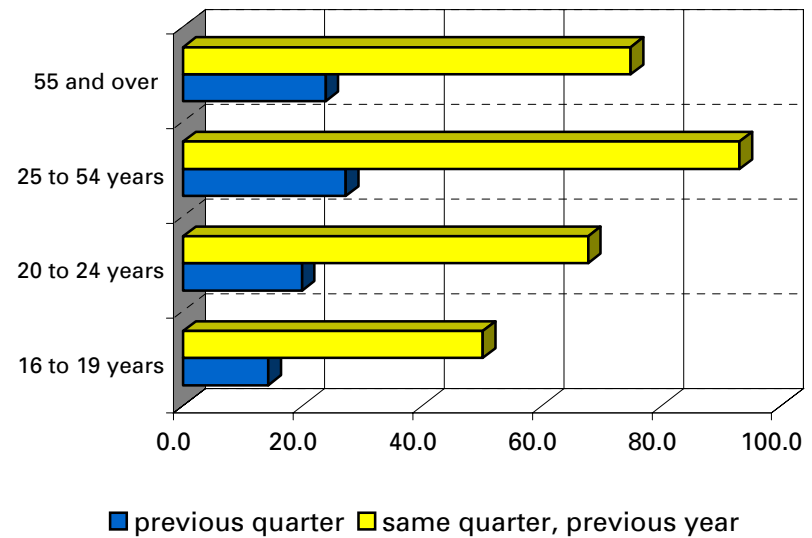


Variation percentages over the previous quarter and over the same quarter of the previous year

Employment

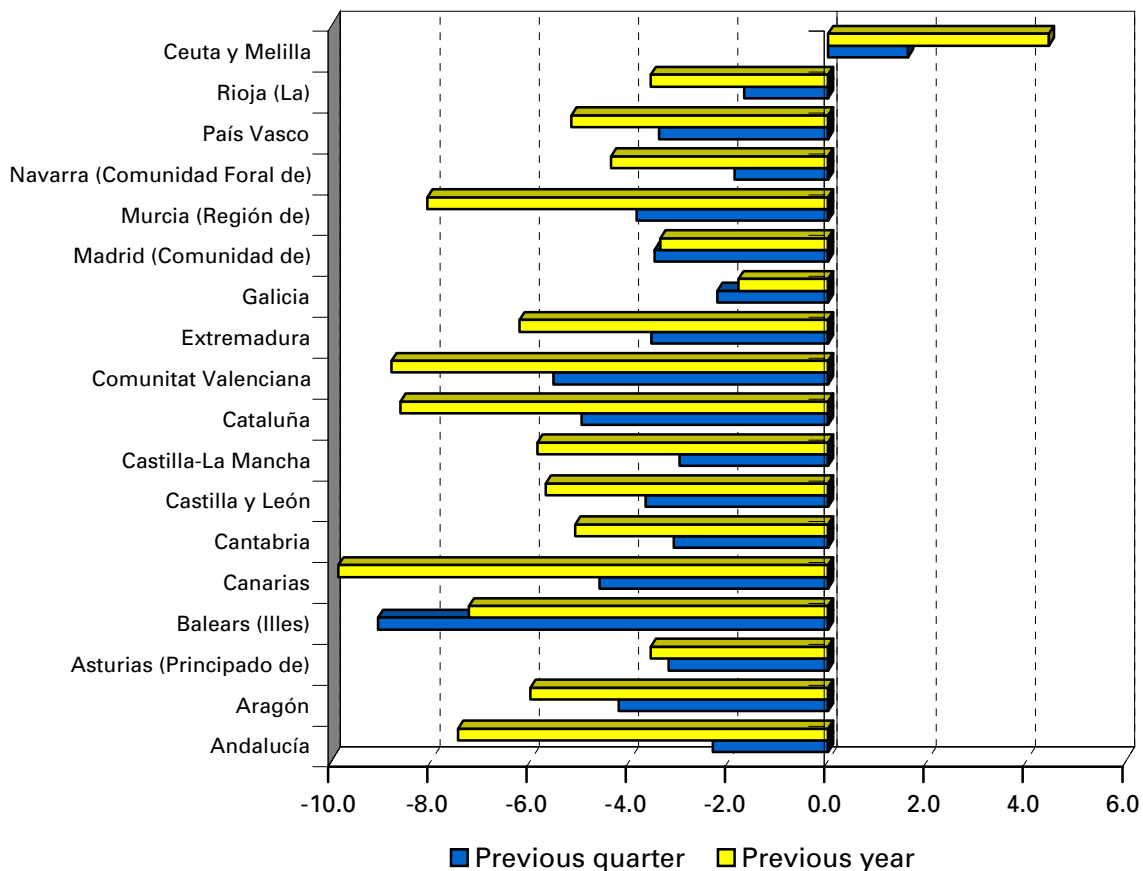


Unemployment



Employment variation percentages over the previous quarter and over the same quarter of the previous year

First Quarter 2009



Unemployment rate (Spain = 17.36)

