

Economically Active Population Survey (EAPS) First quarter of 2010

Main results

- The number of employed persons decreases by 251,800 persons in the first quarter of 2010, as compared with the previous quarter, standing at 18,394,200. In the last year, employment has decreased by 696,600 persons. The interannual employment rate stands at -3.65%.
- The activity rate stands at 59.83%, eight hundredths more than in the fourth quarter of 2009. For men, the rate is 67.95% (19 hundredths lower than the previous quarter), while the rate for women is 52.05% (34 hundredths higher).
- The number of unemployed persons increases by 286,200 persons as compared with the previous quarter, standing at 4,612,700. The unemployment rate increases 1.22 points, reaching 20.05%. The number of unemployed persons has increased by 602,000 persons during the last 12 months.
- The total number of wage earners decreases by 239,400 persons as compared with the previous quarter, and stands at 15,253,300. Wage earners with a permanent contract decrease by 73,700 in the last three months, while temporary wage earners decrease by 165,700 persons. In the last year, the number of wage earners has decreased by 589,800 persons, of whom 305,200 have had a temporary contract.
- The increases in the number of employed persons, as compared with the previous quarter, are recorded in Región de Murcia (6,800 more employed persons) and País Vasco (3,800). The greatest decreases are observed in Galicia (41,800 fewer employed persons), Cataluña (37,500) and Comunidad de Madrid (34,700).
- This quarter, unemployment decreases only in País Vasco (9,400 fewer unemployed persons). The greatest increases in unemployment are in Comunidad de Madrid (53,900 more unemployed persons), Andalucía (46,900) and Cataluña (33,200).

The number of active persons increases by 34,400, standing at 23,006,900

The total number of active persons reached 23,006,900 in the first quarter of 2010, with an increase of 34,400 persons as compared with the previous quarter. The activity rate was 59.83%, that is, eight hundredths more than in the previous quarter.

The number of active women increased by 73,900 persons this quarter, standing at 10,213,300. The female activity rate increased 34 hundredths, reaching 52.05%. In turn, the number of active men stood at 12,793,600, with a decrease of 39,500 persons. The male activity rate decreased 19 hundredths this first quarter of the year, standing at 67.95%.

In the last 12 months, the number of active persons decreased by 94,600. There was an increase of 138,500 in women, whereas active men decreased by 233,100.

The activity rate for the foreign population (77.28%) increased 1.16 points this quarter, while that of the Spanish population decreased by seven hundredths to 57.37%. The difference between the two activity rates was nearly 20 points. To a large extent, the age structure of the foreign nationals explained this difference.

Employment decreases by 251,800 persons this quarter, to 18,394,200

The number of employed persons stood at 18,394,200 persons, that is, 251,800 fewer than in the fourth quarter of 2009. In the last 12 months, the number of employed persons decreased by 696,600 persons.

The interannual employment rate was -3.65% in the first quarter of 2010, that is, an improvement of 2.45 points as compared with the fourth quarter of 2009 (-6.10%).

Employment decreased for women by 51,100 this quarter, whereas for men it decreased by 200,700.

In the past 12 months, employment decreased for women by 105,700, and decreased for men by 591,000.

The number of employed Spaniards decreased by 247,800 persons in the last three months, and the number of employed foreign nationals decreased by 4,000 persons. In the first quarter of 2010, 13.83% of the total employed persons were foreign nationals.

The number of employed persons dropped in all age groups except in group aged 50-54 years that remained practically without variation. The decrease in employed persons was the most intense among the youngest groups.

By sex, employment increased considerably among women in the group aged 50 years old and over. Among men, employment decreased in all age groups, except in the group aged 35-39 years.

Regarding the quarter-on-quarter evolution by activity sector, the number of persons employed in *Agriculture* increased by 52,600 persons, to stand at 835,200. Those employed in *Industry* decreased by 81,100 persons, to a total of 2,599,800. In the *Construction* sector, this first quarter of the year, a decrease of 139,700 persons was recorded in the number of employed persons, with employment in the sector standing at 1,663,000. Lastly, the number of those employed in *Services* stood at 13,296,100, with a decrease of 83,600.

By interannual variation, employment decreased by 78,800 persons in *Services* (-0.59%), by 315,000 in *Construction* (-15.92%), by 300,300 in *Industry* (-10.36%) and by 2,600 in *Agriculture* (-0.31%).

The total number of wage earners decreases by 239,400 persons, and that of wage earners with a temporary contract decreases by 165,700

The total number of wage earners in the first quarter of 2010 was 15,253,300 persons, with a decrease of 239,400 persons as compared with the previous quarter. The number of wage earners with permanent contracts fell by 73,700 persons, to stand at 11,532,700, and wage earners with temporary contracts decreased by 165,700 persons, to a total of 3,720,500.

The temporary employment rate stood at 24.39%, with a decrease of 69 hundredths as compared with the previous quarter.

In the past 12 months, the total number of wage earners decreased by 589,800 persons. Wage earners with a permanent contract decreased by 284,600 persons, while wage earners with a temporary contract decreased by 305,200 persons.

The salary rate decreased 16 hundredths, standing at 82.92%.

The number of self-employed workers decreased by 9,900 in the last three months, and by 109,700 in one year. The group with the greatest decreases in employment was that of Businesspersons without wage earners or independent workers (13,400 fewer this quarter).

Regarding the **working day**, during this quarter, 2,451,700 part-time employed persons were registered, 19,000 fewer than the previous quarter. 1,918,200 of them were women (practically the same number as three months ago) and 533,500 were men (19,400 less than in the fourth quarter of 2009).

Full-time employed persons decreased by 232,800 as compared with the previous quarter. The number of full-time employed men decreased by 181,300, while the number of women decreased by 51,400.

The percentage of part-time employed persons was 13.33%, that is, eight hundredths more than the fourth quarter of the previous year.

Unemployment increases by 286,200 persons, reaching a total of 4,612,700

Unemployment grew by 286,200 persons in this quarter. The total number of unemployed persons stood at 4,612,700, with an increase of 602,000 in the last 12 months.

The unemployment rate increased 1.22 points in the first quarter of the year, and reached 20.05% of the economically active population.

The growth of unemployment for men was higher (161,100) than for women (125,000).

The male unemployment rate was 19.96%, that is, 1.32 points more than in the fourth quarter of 2009. The female rate increased 1.09 points, standing at 20.16%.

Unemployment grew by 231,000 persons among Spaniards and by 55,200 persons among foreign nationals. The unemployment rate for Spaniards was 18.01% (1.21 points higher than the previous quarter), and that for foreign nationals was 30.79% (1.09 points higher).

By age and sex, unemployment was concentrated in the group aged 25 to 54 years old, with 247,100 more unemployed persons. This trend was also observed, separately, in men and women.

Regarding the quarter-on-quarter evolution by sector, unemployment decreased in *Industry* (24,800 fewer unemployed persons) and in *Construction* (13,100 fewer). Conversely, it increased in *Services* (89,700 more unemployed persons) and in *Agriculture* (5,800 more unemployed persons).

Unemployment increased by 204,400 persons among those who lost their jobs more than one year ago, and decreased by 24,000 among those seeking their first job.

By interannual comparison, unemployment decreased in *Construction* (142,200 fewer unemployed persons) and in *Industry* (70,500). Conversely, there were increases in *Services* (57,800 more) and in *Agriculture* (28,300).

In interannual terms, unemployment also increased among those persons who lost their jobs more than one year ago (by 704,200) and among those seeking their first job (by 24,400).

The unemployment rate for the household reference person increased 82 hundredths, and stood at 16.56%. The rate for the spouse or partner increased 1.21 points to 16.75%, and the rate for children increased 2.15 points to 31.94%.

The number of households with all active members unemployed is 1,298,500

In the first quarter of 2010, the number of households with all active members working decreased by 213,400 to stand at 9,195,000. Over the last 12 months, the number of households in this category decreased by 400,100.

The number of households in which all active members were unemployed increased by 78,500 as compared with the previous quarter, and by 230,200 in the last 12 months. The total number of households in this situation was 1,298,500.

Mobility as related to activity

Regarding quarter-on-quarter mobility as related to activity, the proportion of unemployed persons who had been employed three months prior was 20.16%, that is, 1.89 points less than the fourth quarter of 2009.

The percentage of employed persons who had also been employed three months ago was 93.48%, that is, 1.28 points higher than that recorded the previous quarter.

The percentage of employed persons in the current quarter, and who had been unemployed in the fourth quarter of 2009, was 4.18%, that is 54 hundredths less than three months prior. The percentage of employed persons who had been inactive before was 2.34%, which was 74 hundredths less than in the fourth quarter of the previous year.

The percentage of inactive persons who had been employed during the previous quarter decreased 1.02 points, to 3.59%.

60.52% of the unemployed persons this quarter had also been unemployed the previous quarter, indicating a 2.87-point increase.

92.52% of inactive persons had also been inactive three months prior. This percentage was 1.48 points higher than that from the previous quarter.

Results by Autonomous Community

The greatest increases in the number of **active persons** this quarter were in Andalucía (44,500 more active persons), Comunidad de Madrid (19,200) and Región de Murcia (15,400).

The most significant decreases in the number of active persons were in Comunitat Valenciana (22,400 less active persons) and Galicia (9,500).

Regarding **employment**, the number of employed persons in the first quarter of 2010 increased in Región de Murcia (6,800) and País Vasco (3,800). Conversely, the largest decreases in the number of employed persons were observed in Galicia (41,800 fewer employed persons), Cataluña (37,500) and Comunidad de Madrid (34,700).

In the last 12 months, no Autonomous Community presented an increase in the number of employed persons. The greatest decreases were in Cataluña (131.300 fewer employed persons), Comunitat Valenciana (119,900) and Andalucía (92,400).

Regarding **unemployment**, País Vasco is the only Community that experienced a decrease in unemployment (9,400 fewer unemployed persons). The greatest increases in the number of unemployed persons were in Comunidad de Madrid (53,900 more unemployed persons), Andalucía (46,900) and Cataluña (33,200).

In the interannual variation, all of the Autonomous Communities experienced increases in the number of unemployed persons. The greatest increases corresponded to Andalucía (136,800 more unemployed persons in the last 12 months), Comunidad de Madrid (92,500), and Comunitat Valenciana (91,900).

País Vasco (10.91%), Comunidad Foral de Navarra (12.32%), and Cantabria (14.49%) were the Autonomous Communities with the lowest **unemployment rates** in the first quarter of 2010. The highest unemployment rates were recorded in Canarias (27.68%), Andalucía (27.21%) and Extremadura (23.45%).

The lowest female unemployment rates were in Comunidad Foral de Navarra (10.95%), País Vasco (11.58%) and Comunidad de Madrid (15.96%).

In Comunidad Foral de Navarra, Cataluña, Comunitat Valenciana and Comunidad de Madrid, the female unemployment rate was lower than the male rate this quarter.

Worth noting among the Communities in which the female unemployment rate was higher than the male rate, were Extremadura (6.32 points higher), Castilla - La Mancha (4.56 points higher) and La Rioja (4.45).

The Autonomous Communities with the highest **activity rates** in the first quarter of 2010 were Comunidad de Madrid (64.96%), Illes Balears (63.71%) and Canarias (62.53%).

The lowest activity rates this quarter were in Principado de Asturias (51.85%), Extremadura (53.62%) and Galicia (54.41%).

Results by province

This information is available from the EAPS, at the following link:

http://www.ine.es/en/daco/daco42/daco4211/epapro0110_en.pdf

All the provincial information from this survey is also available at the following links:

- In the INEbase database:

<http://www.ine.es/jaxiBD/menu.do?L=1&divi=EPA&his=0&type=db>

- In the TEMPUS database:

<http://www.ine.es/GSTConsul/loginAction.do?U=S0&language=1>

For further information see [INEbase-www.ine.es/en/welcome_en.htm](http://www.ine.es/en/welcome_en.htm) All press releases at: www.ine.es/en/prensa/prensa_en.htm

Press Office: Telephone numbers: 91 583 93 63 / 94 08 – Fax: 91 583 90 87 - gprensa@ine.es

Information Area: Telephone number: 91 583 91 00 – Fax: 91 583 91 58 – www.ine.es/infoine

Methodological note

General characteristics

The Economically Active Population Survey is a continuous, sample-based study, aimed at family dwellings, and which has been conducted since 1964.

Beginning in the third quarter of 2009, this Survey has included the additional sample collected by the *Instituto Galego de Estadística* (IGE) in Galicia, using the same fieldwork system and identical methodology to that used by the INE. Thus, in addition to the 3,588 census sections that, since 2005, have comprised the sample for all of Spain, we also have the 234 additional sections in the Autonomous Community of Galicia. In total, the sample of the EAPS is comprised, from the third quarter of 2009 onwards, of 3,822 census sections, from among the more than 30,000 into which Spain is divided. On average, 18 households are surveyed in each of them, except in Barcelona, Madrid, Sevilla, Valencia and Zaragoza, where the number of interviews is 22. Thus, the sample size is approximately 65,000 dwellings, providing information on some 180,000 persons. This data is collected through personal and telephone interviews, conducted by National Statistics Institute interviewers, attached to the provincial delegations thereof. The information is carefully filtered and processed using computer means. Results are obtained within the month after the end of the reference quarter for the data.

Main definitions

Active persons: persons aged 16 or over who, during the reference week (the week prior to that in which the interview is held), supplied labour for the production of economic goods and services, or were available to do so and carried out actions to incorporate themselves into said production. They are divided into employed and unemployed persons.

Employed persons: persons aged 16 or over who, during the reference week, worked for at least one hour, in exchange for payment (salary, wage, business benefit, etc.) in cash or in kind. Persons who, having a job, had been temporarily absent from it due to illnesses, vacation, etc. are also employed persons.

Employed persons are classified, considering their professional status, as non-wage earners (employers, businessmen without wage earners, and independent workers, cooperative members, family assistance) and wage earners (public or private).

Considering the length of the working day, employed persons are classified as full-time and part-time employed persons. The usual working week cannot be shorter than 30 hours in the first case, nor exceed 35 hours in the second.

Wage earners are classified into permanent and temporary. For the latter, the end of their contract or work relationship is set by means of objective conditions, such as the expiry of a certain period of time, the completion of a specific task, etc.

A significant category within employment is that of **time-related underemployment**, defined in the 16th International Labour Statisticians Conference (Geneva, 1998). The EAPS considers persons suffering time-related underemployment as employed persons who would like to work more hours, who are available to work more hours and whose effective working hours in the reference week are less than the number of hours usually worked by employed

persons working full-time in the same branch of activity as that in which the underemployed person performs his or her main job.

Unemployed persons: Individuals, aged 16 or over who, during the reference week, were jobless, available for work, and actively looking for a job. Persons who might have already found a job and are waiting to start, are also considered as unemployed, provided that they fulfil the first two conditions.

According to European Commission Regulation 1897/2000, the following are considered as active search methods in the four weeks prior to the interview:

–Being in contact with a public employment office for the purpose of finding work, whatever part they play in the initiative (the renewal of registration due to purely administrative reasons does not constitute active planning).

–Being in contact with a private office (temporary employment office, specialised contracting company, ...) with the objective of finding work.

–Having sent an application directly to employers.

–Having searched via personal relations and trade unions,

–Having advertised oneself or responded to newspaper advertisements.

–Having studied employment offers.

–Having taken part in a test, public exam or interview in the framework of a contracting procedure.

–Having looked for land, premises or material.

–Having taken steps to obtain permits, licences or financial resources.

Inactive persons: Individuals aged 16 or over not included in any of the above categories.

Economically Active Population Survey First Quarter 2010

National results

(Continues)

	Current quarter	Variation on previous quarter		Variation on same quarter, previous year	
		Difference	Percentage	Difference	Percentage
1. Population aged 16 years and over by sex and labour status					
BOTH SEXES					
Population aged 16 years and over	38,450.8	7.7	0.02	42.2	0.11
Active population	23,006.9	34.4	0.15	-94.6	-0.41
- Employed	18,394.2	-251.8	-1.35	-696.6	-3.65
- Unemployed	4,612.7	286.2	6.61	602.0	15.01
Inactive	15,444.0	-26.7	-0.17	136.8	0.89
Activity rate	59.83	0.08	-	-0.31	-
Unemployment rate	20.05	1.22	-	2.69	-
Population aged 16 to 64 years	30,849.7	-23.5	-0.08	-76.8	-0.25
Activity rate (16-64)	74.09	0.22	-	-0.11	-
Unemployment rate (16-64)	20.17	1.23	-	2.71	-
Employment rate (16-64)	59.14	-0.73	-	-2.10	-
MALES					
Population aged 16 years and over	18,828.0	-5.1	-0.03	-20.5	-0.11
Active population	12,793.6	-39.5	-0.31	-233.1	-1.79
- Employed	10,239.9	-200.7	-1.92	-591.0	-5.46
- Unemployed	2,553.7	161.1	6.74	357.9	16.30
Inactive	6,034.4	34.5	0.57	212.6	3.65
Activity rate	67.95	-0.19	-	-1.16	-
Unemployment rate	19.96	1.32	-	3.10	-
Population aged 16 to 64 years	15,571.8	-19.4	-0.12	-75.0	-0.48
Activity rate (16-64)	81.60	-0.05	-	-1.08	-
Unemployment rate (16-64)	20.08	1.34	-	3.12	-
Employment rate (16-64)	65.21	-1.13	-	-3.44	-
FEMALES					
Population aged 16 years and over	19,622.8	12.8	0.07	62.7	0.32
Active population	10,213.3	73.9	0.73	138.5	1.37
- Employed	8,154.2	-51.1	-0.62	-105.7	-1.28
- Unemployed	2,059.0	125.0	6.47	244.1	13.45
Inactive	9,409.5	-61.2	-0.65	-75.8	-0.80
Activity rate	52.05	0.34	-	0.54	-
Unemployment rate	20.16	1.09	-	2.15	-
Population aged 16 to 64 years	15,277.8	-4.0	-0.03	-1.9	-0.01
Activity rate (16-64)	66.43	0.51	-	0.92	-
Unemployment rate (16-64)	20.28	1.09	-	2.17	-
Employment rate (16-64)	52.96	-0.31	-	-0.70	-

2. Spanish population¹ aged 16 years and over by labour status

SPANISH POPULATION AGED 16 YEARS AND OVER	33,695.8	12.8	0.04	63.1	0.19
Active population	19,332.2	-16.8	-0.09	-44.8	-0.23
- Employed	15,850.9	-247.8	-1.54	-572.9	-3.49
- Unemployed	3,481.3	231.0	7.11	528.1	17.88
Inactive	14,363.6	29.6	0.21	107.9	0.76
Activity rate	57.37	-0.07	-	-0.24	-
Unemployment rate	18.01	1.21	-	2.77	-

¹ including dual nationality

2010 April 30 th

National results

(Continuation)

	Current quarter	Variation on previous quarter		Variation on same quarter, previous year	
		Difference	Percentage	Difference	Percentage
3. Foreign population aged 16 years and over by labour status					
FOREIGN POPULATION AGED 16 YEARS AND OVER	4,755.0	-5.1	-0.11	-20.8	-0.44
Active population	3,674.7	51.2	1.41	-49.8	-1.34
- Employed	2,543.3	-4.0	-0.16	-123.7	-4.64
- Unemployed	1,131.4	55.2	5.13	73.9	6.99
Inactive	1,080.3	-56.3	-4.96	29.0	2.75
Activity rate	77.28	1.16	-	-0.71	-
Unemployment rate	30.79	1.09	-	2.40	-
4. Employed by sex, age group and economic sector					
BOTH SEXES	18,394.2	-251.8	-1.35	-696.6	-3.65
16 to 19 years	155.6	-5.3	-3.28	-58.2	-27.23
20 to 24 years	1,050.3	-61.8	-5.56	-195.0	-15.66
25 to 29 years	2,173.8	-70.9	-3.16	-243.7	-10.08
30 to 34 years	2,851.6	-51.2	-1.76	-145.8	-4.86
35 to 39 years	2,801.3	-14.5	-0.51	-40.9	-1.44
40 to 44 years	2,665.1	-15.5	-0.58	-19.5	-0.73
45 to 49 years	2,394.7	-20.8	-0.86	-11.3	-0.47
50 to 54 years	1,981.4	0.8	0.04	45.9	2.37
55 and over	2,320.3	-12.7	-0.54	-28.2	-1.20
MALES	10,239.9	-200.7	-1.92	-591.0	-5.46
16 to 19 years	94.8	-7.1	-7.00	-35.0	-26.97
20 to 24 years	533.2	-41.4	-7.21	-133.3	-19.99
25 to 29 years	1,108.4	-54.3	-4.67	-155.0	-12.27
30 to 34 years	1,563.1	-39.4	-2.46	-100.8	-6.06
35 to 39 years	1,587.6	2.8	0.17	-18.4	-1.14
40 to 44 years	1,475.9	-10.3	-0.70	-38.4	-2.53
45 to 49 years	1,341.9	-14.1	-1.04	-12.3	-0.91
50 to 54 years	1,121.3	-15.2	-1.34	-28.1	-2.45
55 and over	1,413.7	-21.6	-1.51	-69.8	-4.70
FEMALES	8,154.2	-51.1	-0.62	-105.7	-1.28
16 to 19 years	60.8	1.9	3.15	-23.2	-27.62
20 to 24 years	517.1	-20.4	-3.80	-61.7	-10.67
25 to 29 years	1,065.4	-16.6	-1.53	-88.7	-7.69
30 to 34 years	1,288.5	-11.8	-0.91	-44.9	-3.37
35 to 39 years	1,213.7	-17.2	-1.40	-22.5	-1.82
40 to 44 years	1,189.1	-5.2	-0.43	18.9	1.61
45 to 49 years	1,052.9	-6.7	-0.64	1.0	0.10
50 to 54 years	860.1	16.0	1.90	74.0	9.42
55 and over	906.6	9.0	1.00	41.6	4.81
TOTAL EMPLOYED	18,394.2	-251.8	-1.35	-696.6	-3.65
Agriculture	835.2	52.6	6.72	-2.6	-0.31
Industry	2,599.8	-81.1	-3.02	-300.3	-10.36
Construction	1,663.0	-139.7	-7.75	-315.0	-15.92
Services	13,296.1	-83.6	-0.62	-78.8	-0.59

National results

(Continuation)

	Current quarter	Variation on previous quarter		Variation on same quarter, previous year	
		Difference	Percentage	Difference	Percentage

5. Employed by professional status, type of contract and working hours

TOTAL EMPLOYED	18,394.2	-251.8	-1.35	-696.6	-3.65
Self-employed workers	3,130.8	-9.9	-0.31	-109.7	-3.39
- Employers	1,047.9	-3.1	-0.30	-52.4	-4.76
- Independent workers	1,879.9	-13.4	-0.71	-44.8	-2.33
- Cooperatives members	32.7	-4.8	-12.87	1.2	3.76
- Family workers	170.3	11.4	7.20	-13.8	-7.48
Employees	15,253.3	-239.4	-1.55	-589.8	-3.72
- With a permanent job	11,532.7	-73.7	-0.63	-284.6	-2.41
- With a temporary job	3,720.5	-165.7	-4.26	-305.2	-7.58
Others	10.1	-2.5	-20.09	2.9	40.63
FULL-TIME EMPLOYED	15,942.4	-232.8	-1.44	-725.4	-4.35
Males	9,706.4	-181.3	-1.83	-623.9	-6.04
Females	6,236.1	-51.4	-0.82	-101.6	-1.60
PART-TIME EMPLOYED	2,451.7	-19.0	-0.77	28.8	1.19
Males	533.5	-19.4	-3.50	32.9	6.57
Females	1,918.2	0.4	0.02	-4.1	-0.21

6. Unemployed by sex, age group, and economic sector

BOTH SEXES	4,612.7	286.2	6.61	602.0	15.01
16 to 19 years	231.4	13.0	5.95	-24.5	-9.56
20 to 24 years	604.2	6.2	1.03	51.5	9.31
25 to 54 years	3,427.3	247.1	7.77	499.8	17.07
55 and over	349.9	19.9	6.04	75.2	27.36
MALES	2,553.7	161.1	6.74	357.9	16.30
16 to 19 years	138.6	3.0	2.23	-7.1	-4.90
20 to 24 years	342.2	8.0	2.40	36.2	11.84
25 to 54 years	1,865.0	138.5	8.02	277.4	17.47
55 and over	208.0	11.6	5.92	51.4	32.81
FEMALES	2,059.0	125.0	6.47	244.1	13.45
16 to 19 years	92.8	10.0	12.04	-17.3	-15.72
20 to 24 years	262.0	-1.8	-0.70	15.2	6.18
25 to 54 years	1,562.3	108.6	7.47	222.4	16.60
55 and over	141.9	8.3	6.21	23.8	20.13
TOTAL UNEMPLOYED	4,612.7	286.2	6.61	602.0	15.01
Agriculture	198.8	5.8	3.03	28.3	16.58
Industry	302.6	-24.8	-7.57	-70.5	-18.90
Construction	601.5	-13.1	-2.13	-142.2	-19.12
Services	1,504.3	89.7	6.34	57.8	4.00
Lost their job more than 1 year ago	1,681.7	204.4	13.84	704.2	72.03
First job seekers	323.9	24.0	8.02	24.4	8.15

National results

(Conclusion)

	Current quarter	Variation on previous quarter		Variation on same quarter, previous year	
		Difference	Percentage	Difference	Percentage

7. Unemployment rate by relationship with the reference person

	Current quarter	Variation on previous quarter	Percentage	Variation on same quarter, previous year	Percentage
TOTAL	20.05	1.22	-	2.69	-
Reference person	16.56	0.82	-	2.09	-
Spouse or partner	16.75	1.21	-	2.33	-
Child	31.94	2.15	-	5.11	-
Other relatives	29.08	2.71	-	4.42	-
Unrelated persons	19.57	-0.11	-	0.51	-

8. Household data

	Current quarter	Variation on previous quarter	Percentage	Variation on same quarter, previous year	Percentage
TOTAL HOUSEHOLDS	17,115.4	-6.0	-0.04	131.9	0.78
Households with at least one active member	12,867.1	-1.3	-0.01	13.8	0.11
- All member employed	9,195.0	-213.4	-2.27	-400.1	-4.17
- All member unemployed	1,298.5	78.5	6.43	230.2	21.54
Households without any active population	4,248.4	-4.7	-0.11	118.1	2.86

Mobility according to activity in current and previous quarter

Classification in previous quarter	Classification in current quarter			
	Total	Employed	Unemployed	Inactive
BOTH SEXES				
Total	100.00	100.00	100.00	100.00
Employed	48.40	93.48	20.16	3.59
Unemployed	10.37	4.18	60.52	3.90
Inactive	41.23	2.34	19.33	92.52
MALES				
Total	100.00	100.00	100.00	100.00
Employed	55.49	94.15	22.55	4.10
Unemployed	11.58	4.21	64.03	3.88
Inactive	32.93	1.64	13.42	92.02
FEMALES				
Total	100.00	100.00	100.00	100.00
Employed	41.65	92.64	17.30	3.25
Unemployed	9.23	4.15	56.32	3.91
Inactive	49.12	3.21	26.38	92.84

Grossing up factors of current quarter (forward analysis)

Results by Autonomous Communities

(Continues)

	Current quarter	Variation on previous quarter		Variation on same quarter, previous year	
		Difference	Percentage	Difference	Percentage
1. Population aged 16 years and over					
TOTAL	38,450.8	7.7	0.02	42.2	0.11
Andalucía	6,743.7	9.3	0.14	40.2	0.60
Aragón	1,111.8	-1.0	-0.09	-5.3	-0.47
Asturias (Principado de)	932.7	-0.7	-0.07	-2.1	-0.23
Balears (Illes)	892.2	0.2	0.02	4.5	0.51
Canarias	1,740.0	3.1	0.18	11.3	0.66
Cantabria	495.0	0.0	-0.01	-0.1	-0.02
Castilla y León	2,152.3	-3.0	-0.14	-14.4	-0.67
Castilla-La Mancha	1,697.1	1.5	0.09	6.1	0.36
Cataluña	6,064.5	-7.7	-0.13	-19.0	-0.31
Comunitat Valenciana	4,171.7	-0.9	-0.02	-12.2	-0.29
Extremadura	906.6	0.6	0.06	2.8	0.31
Galicia	2,384.9	-1.1	-0.05	-2.6	-0.11
Madrid (Comunidad de)	5,258.2	5.5	0.10	22.0	0.42
Murcia (Región de)	1,185.8	2.1	0.18	11.0	0.94
Navarra (Comunidad Foral de)	512.5	0.4	0.08	1.9	0.37
País Vasco	1,824.3	-1.1	-0.06	-3.0	-0.17
Rioja (La)	264.2	-0.4	-0.16	-2.6	-0.98
Ceuta	58.6	0.4	0.65	1.7	2.95
Melilla	54.8	0.5	0.85	2.0	3.83

2. Active population

TOTAL	23,006.9	34.4	0.15	-94.6	-0.41
Andalucía	3,972.1	44.5	1.13	44.4	1.13
Aragón	655.6	1.7	0.26	-5.9	-0.89
Asturias (Principado de)	483.6	2.3	0.47	-3.5	-0.73
Balears (Illes)	568.4	-6.8	-1.18	7.9	1.42
Canarias	1,088.1	-4.0	-0.37	13.9	1.29
Cantabria	277.3	0.2	0.07	-6.4	-2.25
Castilla y León	1,172.2	-4.0	-0.34	-5.2	-0.44
Castilla-La Mancha	983.2	5.0	0.51	9.4	0.97
Cataluña	3,775.1	-4.3	-0.11	-77.8	-2.02
Comunitat Valenciana	2,530.5	-22.4	-0.88	-27.9	-1.09
Extremadura	486.1	2.5	0.51	-2.5	-0.52
Galicia	1,297.7	-9.5	-0.73	-33.4	-2.51
Madrid (Comunidad de)	3,415.5	19.2	0.57	5.7	0.17
Murcia (Región de)	734.3	15.4	2.14	3.8	0.53
Navarra (Comunidad Foral de)	306.4	0.6	0.20	-4.5	-1.46
País Vasco	1,042.4	-5.6	-0.54	-8.4	-0.80
Rioja (La)	156.1	-2.5	-1.56	-4.3	-2.70
Ceuta	33.2	1.3	3.92	-1.0	-2.85
Melilla	29.1	1.0	3.39	1.2	4.22

* Data below 5000 are subject to strong variations, due to sampling error

Results by Autonomous Communities

(Conclusion)

	Current quarter	Variation on previous quarter		Variation on same quarter, previous year	
		Difference	Percentage	Difference	Percentage
3. Employed					
TOTAL	18,394.2	-251.8	-1.35	-696.6	-3.65
Andalucía	2,891.2	-2.3	-0.08	-92.4	-3.10
Aragón	556.0	-11.0	-1.94	-19.6	-3.41
Asturias (Principado de)	403.5	-9.2	-2.24	-25.1	-5.86
Balears (Illes)	441.0	-21.8	-4.71	-8.7	-1.93
Canarias	786.9	-11.3	-1.42	-6.7	-0.85
Cantabria	237.1	-5.0	-2.06	-11.3	-4.56
Castilla y León	986.3	-23.4	-2.32	-28.3	-2.79
Castilla-La Mancha	771.0	-19.1	-2.42	-26.0	-3.27
Cataluña	3,098.9	-37.5	-1.20	-131.3	-4.07
Comunitat Valenciana	1,947.3	-29.4	-1.49	-119.9	-5.80
Extremadura	372.1	-8.7	-2.27	-10.3	-2.68
Galicia	1,097.1	-41.8	-3.67	-71.4	-6.11
Madrid (Comunidad de)	2,863.1	-34.7	-1.20	-86.9	-2.94
Murcia (Región de)	564.1	6.8	1.21	-24.8	-4.22
Navarra (Comunidad Foral de)	268.7	-5.0	-1.81	-9.9	-3.56
País Vasco	928.7	3.8	0.41	-13.5	-1.44
Rioja (La)	132.4	-4.6	-3.34	-9.7	-6.81
Ceuta	25.8	1.7	6.88	-3.0	-10.35
Melilla	22.9	0.9	4.27	2.1	10.32

4. Unemployed

TOTAL	4,612.7	286.2	6.61	602.0	15.01
Andalucía	1,080.9	46.9	4.53	136.8	14.49
Aragón	99.6	12.7	14.64	13.7	16.01
Asturias (Principado de)	80.1	11.5	16.80	21.6	36.90
Balears (Illes)	127.4	15.0	13.35	16.6	15.02
Canarias	301.2	7.3	2.50	20.6	7.34
Cantabria	40.2	5.2	14.81	4.9	14.03
Castilla y León	185.9	19.4	11.66	23.1	14.18
Castilla-La Mancha	212.2	24.1	12.83	35.4	20.04
Cataluña	676.2	33.2	5.16	53.5	8.60
Comunitat Valenciana	583.1	7.1	1.23	91.9	18.72
Extremadura	114.0	11.1	10.83	7.7	7.25
Galicia	200.6	32.2	19.15	37.9	23.33
Madrid (Comunidad de)	552.4	53.9	10.82	92.5	20.12
Murcia (Región de)	170.1	8.6	5.33	28.7	20.28
Navarra (Comunidad Foral de)	37.8	5.6	17.26	5.4	16.60
País Vasco	113.7	-9.4	-7.66	5.1	4.71
Rioja (La)	23.8	2.1	9.68	5.3	28.92
Ceuta	7.4	-0.4	-5.19	2.0	(:)
Melilla	6.1	0.0	0.24	-1.0	-13.70

* Data below 5,000 are subject to strong variations, due to sampling error

(:) The variation percentages calculated from low figures with high sampling errors are not significant

Results by Autonomous Communities

(Absolute figures in thousands and rates in percentage)

5. Employed and unemployed by sex. Activity and unemployment rates

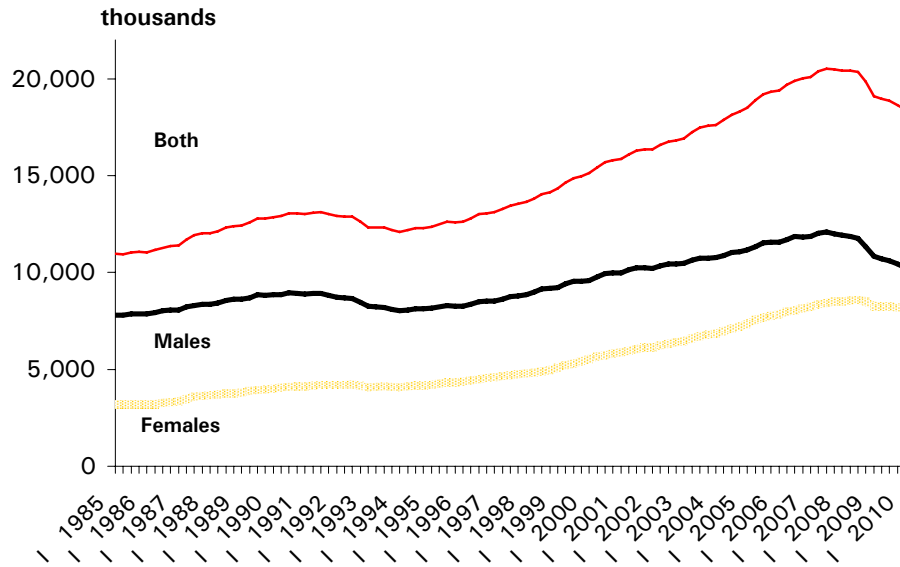
	Both sexes				Males				Females			
	Employed	Unemployed	Activity rate	Unem. rate	Employed	Unemployed	Activity rate	Unem. Rate	Employed	Unemployed	Activity rate	Unem. Rate
TOTAL	18,394.2	4,612.7	59.83	20.05	10,239.9	2,553.7	67.95	19.96	8,154.2	2,059.0	52.05	20.16
Andalucía	2,891.2	1,080.9	58.90	27.21	1,645.9	603.2	67.82	26.82	1,245.3	477.7	50.27	27.72
Aragón	556.0	99.6	58.97	15.20	315.5	51.5	66.62	14.04	240.5	48.1	51.45	16.67
Asturias	403.5	80.1	51.85	16.56	219.4	42.3	59.15	16.15	184.1	37.8	45.26	17.04
Balears (Illes)	441.0	127.4	63.71	22.41	245.2	69.8	70.76	22.16	195.8	57.6	56.69	22.73
Canarias	786.9	301.2	62.53	27.68	440.8	167.5	70.40	27.53	346.1	133.7	54.78	27.86
Cantabria	237.1	40.2	56.02	14.49	135.7	20.2	64.87	12.95	101.4	20.0	47.67	16.47
Castilla y Leon	986.3	185.9	54.46	15.86	570.4	98.4	63.06	14.72	415.9	87.5	46.11	17.38
Castilla-La Mancha	771.0	212.2	57.94	21.58	468.5	115.1	68.47	19.73	302.6	97.1	47.31	24.29
Cataluña	3,098.9	676.2	62.25	17.91	1,681.1	394.5	70.00	19.01	1,417.8	281.7	54.84	16.58
Comunitat Valenciana	1,947.3	583.1	60.66	23.04	1,079.6	333.8	68.58	23.62	867.8	249.3	52.92	22.32
Extremadura	372.1	114.0	53.62	23.45	223.8	58.8	63.17	20.80	148.3	55.2	44.32	27.12
Galicia	1,097.1	200.6	54.41	15.46	600.0	102.4	61.66	14.58	497.1	98.2	47.79	16.50
Madrid (Comunid.de)	2,863.1	552.4	64.96	16.17	1,516.7	296.7	71.92	16.36	1,346.4	255.7	58.54	15.96
Murcia (Región de)	564.1	170.1	61.92	23.17	327.5	98.7	71.19	23.16	236.7	71.4	52.47	23.19
Navarra (C. Foral de)	268.7	37.8	59.79	12.32	148.7	23.0	67.58	13.40	120.0	14.8	52.14	10.95
País Vasco	928.7	113.7	57.14	10.91	511.9	59.1	64.77	10.36	416.8	54.6	50.00	11.58
Rioja (La)	132.4	23.8	59.11	15.23	77.3	11.9	67.88	13.32	55.1	11.9	50.42	17.77
Ceuta	25.8	7.4	56.62	22.42	16.7	4.4	69.93	20.78	9.0	3.1	42.46	25.29
Melilla	22.9	6.1	53.03	21.02	15.3	2.4	68.22	13.52	7.6	3.7	39.35	32.74

* Data below 5,000 are subject to strong variations, due to sampling errors

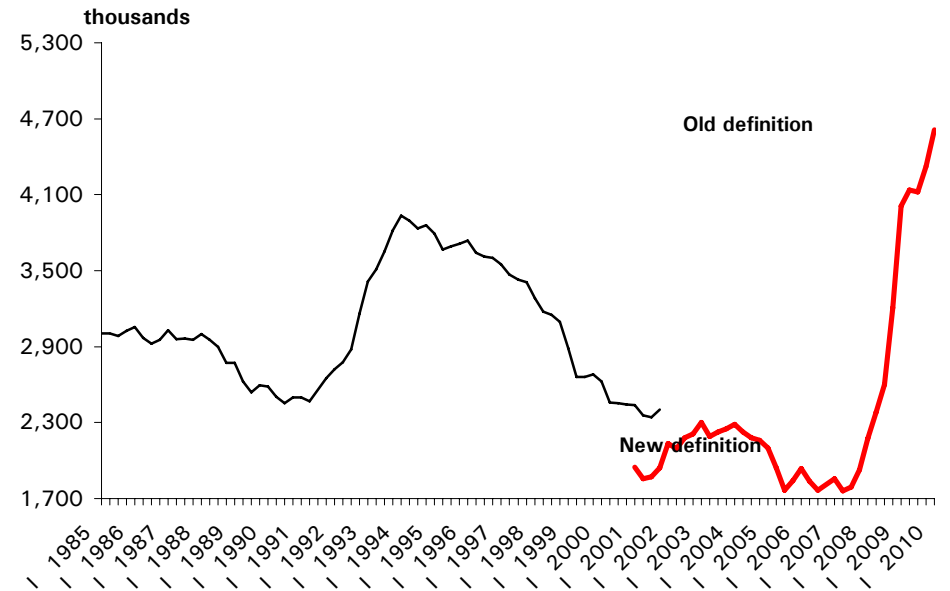
Employed and unemployed by sex

APS First Quarter 2010

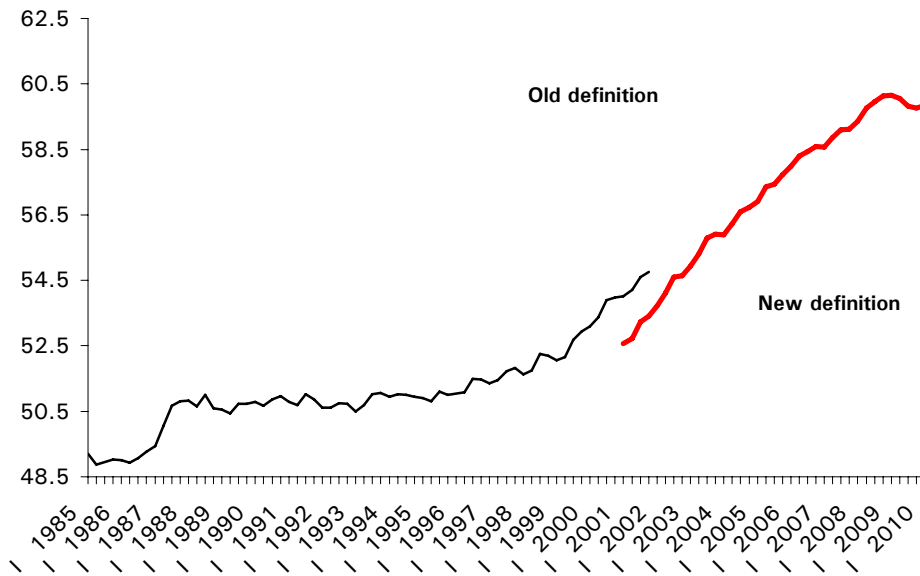
Employment



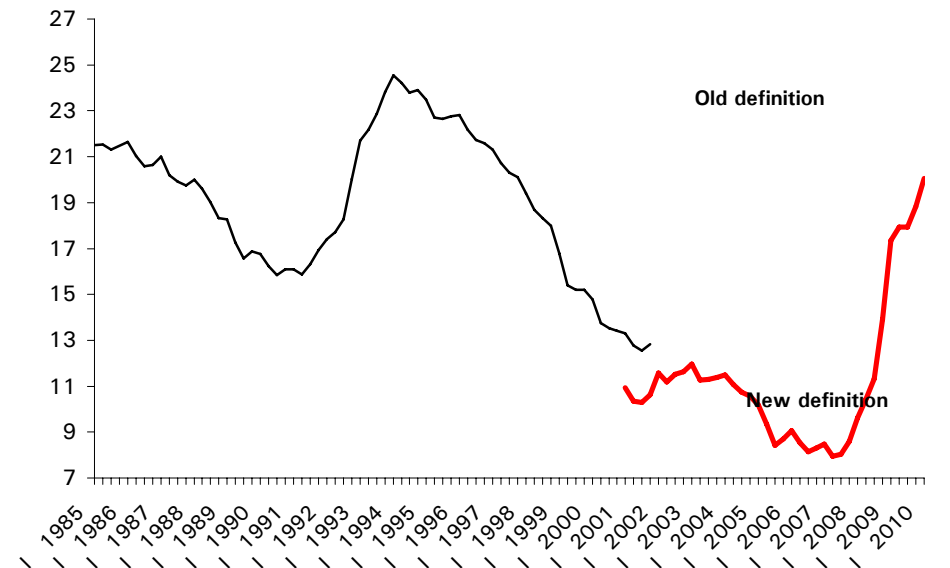
Unemployment



Activity rate



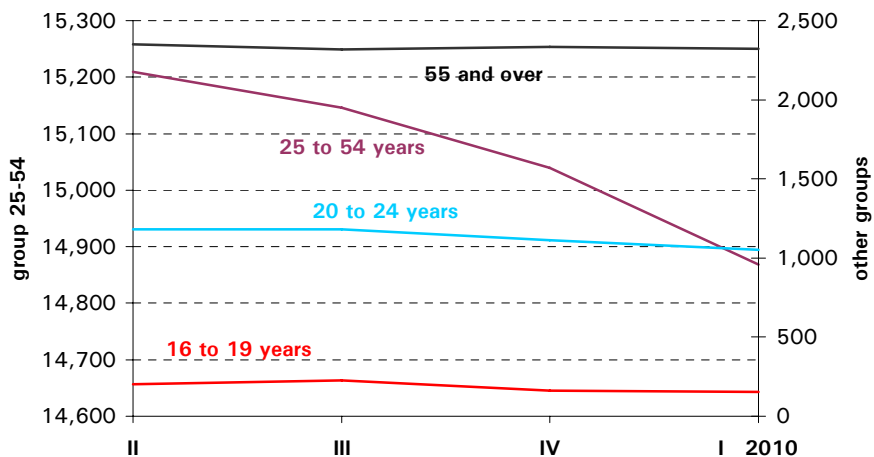
Unemployment rate



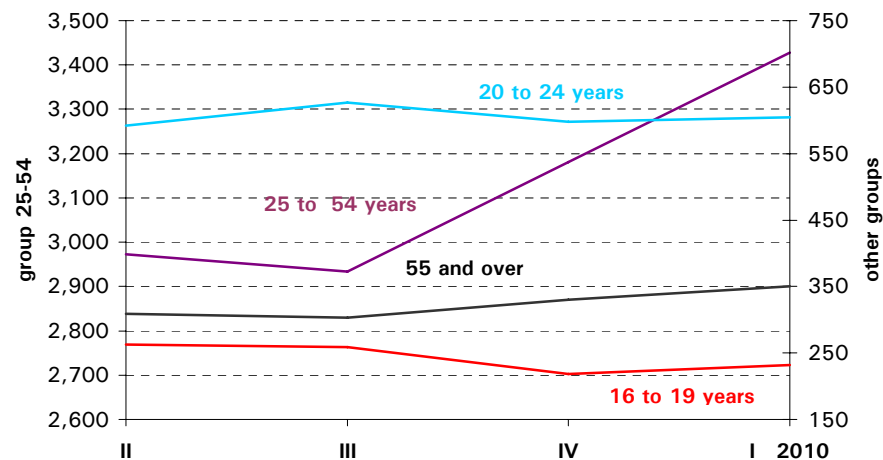
Employed and Unemployed by age

APS First Quarter 2010

Employment (thousands)

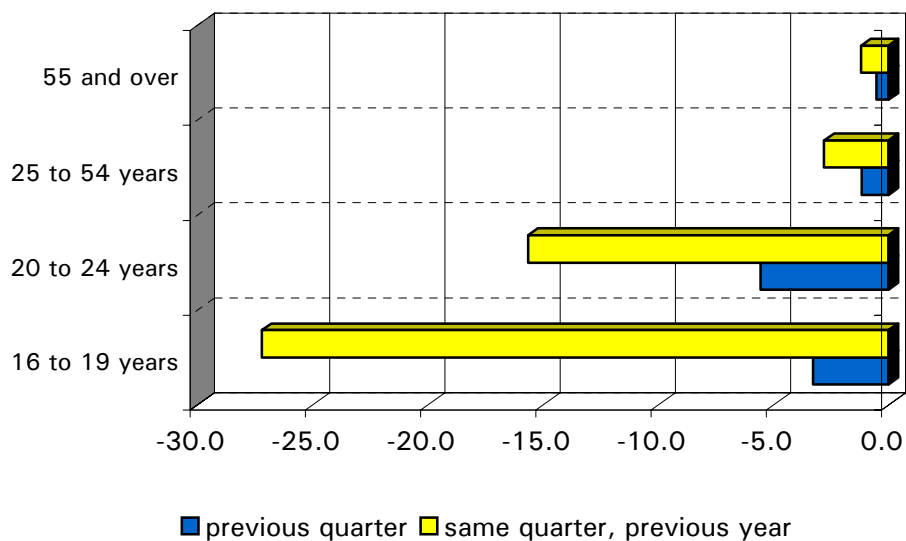


Unemployment (thousands)

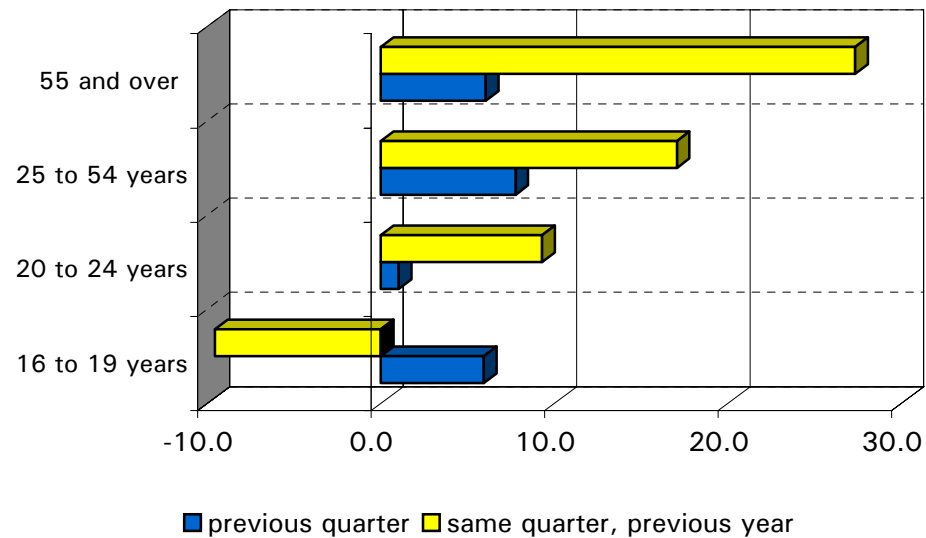


Variation percentages over the previous quarter and over the same quarter of the previous year

Employment

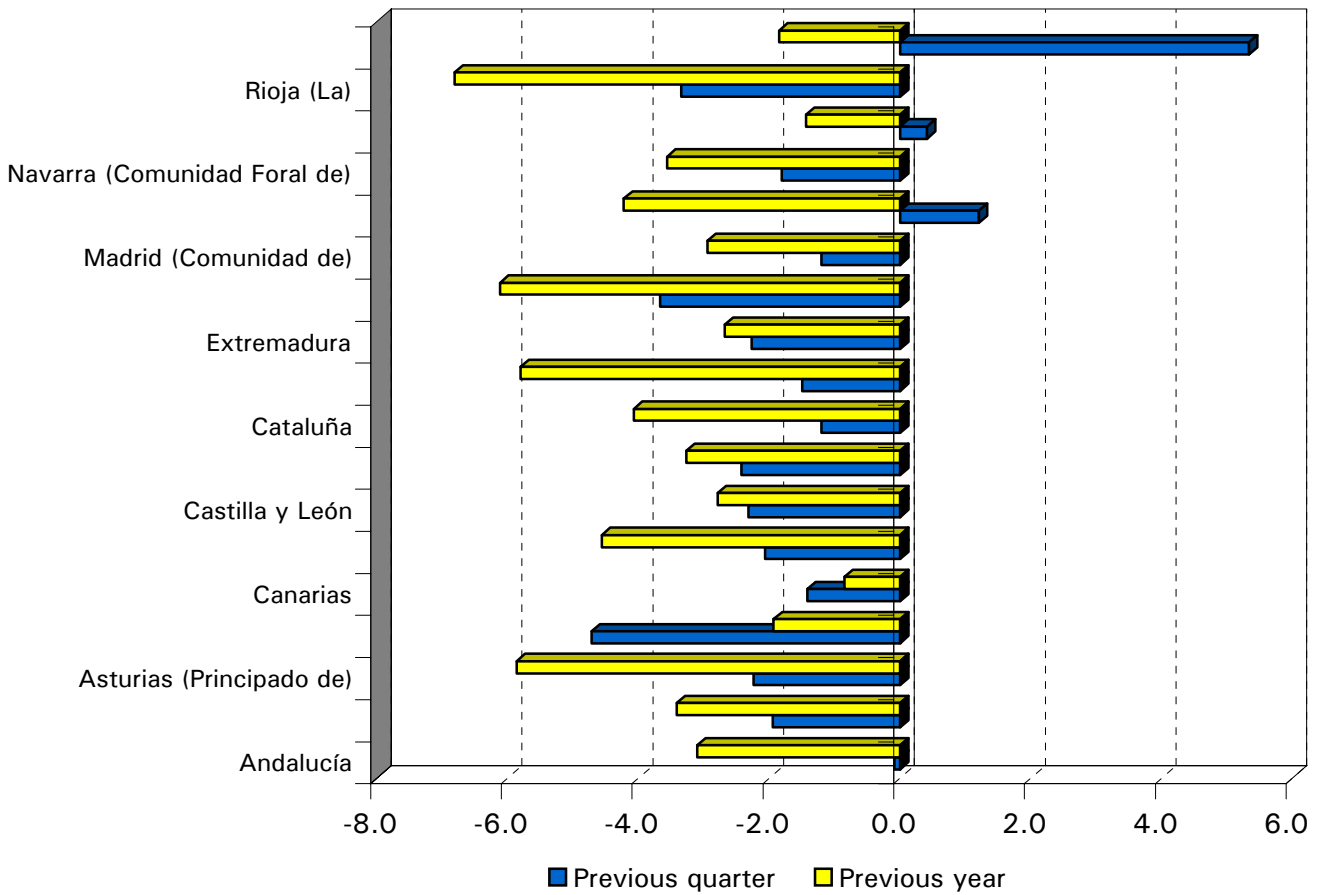


Unemployment



Employment variation percentages over the previous quarter and over the same quarter of the previous year

First Quarter 2010



Unemployment rate (Spain = 20.05)

