

Economically Active Population Survey (EAPS)

First quarter of 2011

Main results

- Employment in the first quarter of 2011 registers a decrease of 256,500 persons, reaching a total of 18,151,700 employed persons. The interannual employment variation rate stands at -1.32%.
- The economically active population drops by 42,900 persons this quarter. The number of unemployed persons increases by 213,500 persons, the total number thus standing at 4,910,200.
- The unemployment rate grows almost one point, standing at 21.29%. In turn, the activity rate drops 11 hundredths, reaching 59.88%.
- The loss of employment is reflected in increases in unemployment and in the number of inactive persons. By sex, in the case of women, the increase in unemployment is greater, due to the decrease in economically inactive women. By age, employment grows for persons aged 50 years old and over, and drops among the youngest persons.
- All sectors record a reduction in the number of employed persons this quarter. *Industry* registers 82,000 fewer persons, *Construction* 78,500, *Services* 74,600 and *Agriculture* 21,300.
- Wage-earners with a permanent contract decrease by 139,100, and wage-earners with a temporary contract do so by 54,300, with regard to the previous quarter.
- The number of households with all of their active members unemployed increases by 58,000 this quarter, standing at 1,386,000.
- By Autonomous Community, the unemployment rate fluctuates between 11.61% in País Vasco and 29.68% in Andalucía. The activity rate fluctuates between 51.43%, recorded in Principado de Asturias, and 64.24%, registered in Comunidad de Madrid.
- Employment registers its greatest increase this quarter in Canarias, and presents its greatest decreases in Comunitat Valenciana, Comunidad de Madrid, Andalucía and Cataluña. In turn, unemployment experiences its greatest decrease in Comunidad de Madrid, and registers the greatest increases in Andalucía, Cataluña, Comunitat Valenciana and Galicia.

Economically active population and activity rate

The economically active population experienced a decrease of 42,900 persons in the first quarter of 2011. The number of economically active persons stood at 23,061,800 persons.

The general activity rate fell 11 hundredths, standing at 59.88%. The female activity rate reached a new maximum (52.67%), with a rise of seven hundredths, as compared with the fourth quarter the previous year.

The distance between the activity rates of Spaniards and foreign nationals exceeded 18 points, in favour of the latter, this circumstance being explained by the different age structures of both populations.

Employment

The number of employed persons decreased by 256,500 persons in the first quarter of 2011, standing at 18,151,700.

The drop in employment affected men (150,700 fewer) more than women (105,800 fewer). By nationality, the number of employed foreign nationals decreased by 78,000, and that of Spaniards did so by 178,500.

By age, employment grew among those persons aged 50 years old and over, whereas the greatest decreases this quarter were concentrated among persons aged under 35 years old.

The number of employed persons decreased in all sectors. *Industry* registered 82,000 fewer employed persons, *Construction* 78,500, *Services* 74,600 and *Agriculture* 21,300.

The number of wage-earners decreased by 193,400, of whom 139,100 had a permanent contract and 54,300 a temporary contract. The temporary employment rate stood at 24.77%, four hundredths below the rate from the previous quarter.

Part-time employment increased by 91,900 persons this quarter, whilst full-time employed persons decreased by 348,400. The percentage of persons working part-time rose to 14.14%, seven tenths higher than in the fourth quarter of 2010.

The interannual variation of employment was -1.32%, a rate similar to that recorded the previous quarter. Employment experienced a decrease of 242,500 persons in one year, 132,400 of whom were wage-earners and 105,900 of whom were self-employed workers.

The interannual job losses among men (181,000 fewer employed men) were triple those of women (61,500 fewer employed women).

Unemployment and unemployment rate

The increase in unemployment was lower than the fall in employment, due to the drop in the economically active population this quarter. The number of unemployed persons increased by 213,500, standing at 4,910,200. In the last 12 months, the total figure of unemployed persons increased by 297,400 persons.

The unemployment rate rose 96 hundredths, as compared with the fourth quarter of 2010, reaching 21.29%.

The increase in unemployment affected women (123,800 more unemployed women) more than men (89,800 more unemployed men). Unlike that which occurred for the total and for men, the variation of female unemployment was due to both the job losses and the increase in the number of economically active women.

The male unemployment rate was 20.76% and the female rate was 21.94%. Despite the greater increase in the female unemployment rate this quarter the composition of unemployment observed since the year 2008 remained, with relatively little distance between the male and female rates and a greater number of unemployed men than unemployed women.

By nationality, unemployment affected Spaniards (165,700 more unemployed persons this quarter) more than foreign nationals (47,900 more). The unemployment rate for the foreign population just reached 32%, and was more than 12 points from that of persons with Spanish nationality.

Unemployment increased in all sectors. In *Services*, there were 94,700 more unemployed persons, in *Industry* 21,200, in *Agriculture* 17,200 and in *Construction* 3,300. Unemployment also increased among those persons who lost their job over a year ago (by 60,100), and among those seeking their first job (by 17,000).

Mobility as related to economic activity

The probabilities of labour transition (mobility from one quarter to the next) showed an increase in the percentages of persons who were already in the same situation in the previous quarter. Thus, the percentage of unemployed persons for the first quarter of the year who were already unemployed three months prior increased 2.4 points, reaching 64.88%. There was also an increase of more than one point in the percentage of employed persons who were already employed the previous quarter (93.64%) and the percentage of inactive persons who were already inactive during said period (92.75%).

Households

The number of households in which all active members were unemployed experienced an increase of 58,000 in the first quarter of 2011, standing at 1,386,000. In parallel, the number of households in which all of the active members were employed decreased by 154,600, reaching 9,066,000.

In an interannual comparison, the variation in both cases was also unfavourable, though to a lesser extent than three months ago. Those households with all of the active members unemployed grew by 87,500 households, while those with all of the active members employed decreased by 129,000.

Results by Autonomous Community

The incorporation of economically active persons in the labour market was especially significant this quarter in Andalucía (24,800 more), Galicia (10,600) and Canarias (9,700). Conversely, the greatest decreases in the number of active persons were recorded in Comunidad de Madrid (56,700 fewer), Comunitat Valenciana (26,500) and Región de Murcia (13,100).

In the last 12 months, the number of economically active persons grew by more than 20,000 persons in Cataluña, Andalucía and País Vasco, whereas it decreased by 43,200 in Comunitat Valenciana and by 31,900 in Comunidad de Madrid.

The only noteworthy increase in employment this quarter was registered in Canarias, with 11,700 more employed persons. The most drastic drops were observed in Comunitat Valenciana (50,500 fewer employed persons), Comunidad de Madrid (36,800), Andalucía (35,300) and Cataluña (34,100).

País Vasco presented the greatest positive variation in employment in the last 12 months (10,800 more employed persons). The most significant drops occurred in Andalucía (77,400 fewer jobs) and Comunitat Valenciana (59,900).

Regarding unemployment, the Communities presenting the greatest quarterly increases were Andalucía (with 60,200 more unemployed persons), Cataluña (40,900) and Comunitat Valenciana and Galicia (more than 20,000 each). The most significant decrease was recorded in Comunidad de Madrid, which presented 19,900 fewer unemployed persons.

In the last 12 months, unemployment increased in all Autonomous Communities, except Comunidad de Madrid, which registered 30,400 fewer unemployed persons.

País Vasco and Comunidad Foral de Navarra had unemployment rates under 13.50%. At the opposite end of the spectrum, Andalucía and Canarias presented rates above 28%. This quarter, the activity rates fluctuated between 64.24% for Comunidad de Madrid and 51.43% for Principado de Asturias.

Results by province

The provincial results summary of the EAPS may be accessed via the following link:

http://www.ine.es/en/daco/daco42/daco4211/epapro0111_en.pdf

All of the provincial information from this survey may be accessed via the following links:

- In the INEbase database

<http://www.ine.es/jaxiBD/menu.do?L=1&divi=EPA&his=0&type=db>

- In the TEMPUS database

<http://www.ine.es/menu/redir/GSTConsul.shtml?divi=EPA>

For further information see [INEbase-www.ine.es/en/welcome_en.htm](http://www.ine.es/en/welcome_en.htm) All press releases at: www.ine.es/en/prensa/prensa_en.htm

Press Office: Telephone numbers: 91 583 93 63 / 94 08 – Fax: 91 583 90 87 - gprensa@ine.es

Information Area: Telephone number: 91 583 91 00 – Fax: 91 583 91 58 – www.ine.es/infoine/?L=1

Methodological note

General features

The Economically Active Population Survey (EAPS) is a continuous sample-based study aimed at family dwellings, and which has been conducted since 1964.

The additional sample collected by the *Galician Statistics Institute* (IGE) has been incorporated as of the third quarter of 2009, using the same fieldwork system and identical methodology to that of the INE. Therefore, apart from the 3,588 census sections that have made up the sample for the whole of Spain since 2005, we must take into account the 234 additional sections in the Autonomous Community of Galicia. Since the third quarter of 2009, the EAPS sample is made up of 3,822 census sections from the more than 30,000 census sections into which Spain is divided. An average of 18 households are surveyed in each one, except in the provinces of Barcelona, Madrid, Sevilla, Valencia and Zaragoza, where the number of households surveyed is 22. Thus, the sample size is approximately 65,000 dwellings, providing information on some 180,000 persons. The data is collected via personal and telephone interviews. The information is carefully filtered and computer-processed. Results are obtained within the month following the end of the reference quarter for the data.

As of the first quarter of 2011, occupation is encoded following the new 2011 National Classification of Occupations. A dual encoding of said variable has been carried out during the four quarters of 2010, with the old and the new classifications, from which, dual results have been published for that year (see the Detailed Results of the EAPS section, <http://www.ine.es/jaxiBD/menu.do?L=1&divi=EPA&his=1&type=db>).

An equivalence matrix has also been calculated between the two classifications (http://www.ine.es/jaxi/menu.do?type=pcaxis&path=/t22/e308_mnu&file=inebase&N=&L=1, Analysis and studies), for the purpose of enabling the link in the employment series.

Main definitions

Active persons: persons aged 16 years old and over who, during the reference week (the week prior to that when the interview is held), supplied labour for the production of goods and services, or were available to do so and in conditions to incorporate themselves into said production. They are divided into employed and unemployed persons.

Employed persons: persons aged 16 years old and over who, during the reference week, worked for at least one hour in exchange for payment (salary, wage, business benefit, etc.) in cash or in kind. Persons who, being employed, had been temporarily absent from their job due to illness, holidays, etc., are also considered employed persons.

Employed persons are classified, considering their professional status, as non-wage earners (employers, businesspersons without wage earners and independent workers, cooperative members, family assistance) and wage earners (public or private).

Considering the length of the working day, employed persons are classified as full-time and part-time employed persons. The usual working week may not be shorter than 30 hours in the first case, nor exceed 35 hours in the second.

Wage earners are classified as permanent and temporary. For the latter, the end of their contract or work relationship is set by means of objective conditions, such as the expiry of a certain period of time, the completion of a specific task, etc.

A significant category within employment is that of **time-related underemployment**, defined in the 16th International Labour Statisticians Conference (Geneva, 1998). The EAPS considers persons suffering time-related underemployment as employed persons who would like to work more hours, who are available to work more hours and whose effective working hours in the reference week are less than the number of hours usually worked by employed persons working full-time in the same branch of activity as that in which the underemployed person develops his/her main job.

Unemployed persons: persons aged 16 years old and over who, during the reference week, were jobless, available for work, and actively looking for a job. Persons who might have already found a job and are waiting to start are also considered to be unemployed, provided that they meet the first two conditions.

According to European Commission Regulation 1897/2000, the following are considered to be active search methods, in the four weeks prior to the interview:

–Being in contact with a public employment office for the purpose of finding work, whatever part they play in the initiative (the renewal of registration due to purely administrative reasons does not constitute active planning).

–Being in contact with a private office (temporary employment agency, specialised hiring agency, etc.) with the objective of finding work.

–Having sent an application directly to employers.

–Having searched via personal relations and trade unions, etc.

–Having advertised oneself or responded to newspaper advertisements.

–Having studied job vacancies.

–Having taken part in a test, public exam or interview in the framework of a contracting procedure.

–Having looked for land, premises or material.

–Having taken steps to obtain permits, licences or financial resources.

Inactive persons: persons aged 16 years old and over not included in any of the above categories.

Economically Active Population Survey First Quarter 2011

National results

(Continues)

	Current quarter	Variation on previous quarter		Variation on same quarter, previous year	
		Difference	Percentage	Difference	Percentage
1. Population aged 16 years and over by sex and labour status					
BOTH SEXES					
Population aged 16 years and over	38,512.0	-0.4	0.00	61.2	0.16
Active population	23,061.8	-42.9	-0.19	55.0	0.24
- Employed	18,151.7	-256.5	-1.39	-242.5	-1.32
- Unemployed	4,910.2	213.5	4.55	297.4	6.45
Inactive	15,450.2	42.5	0.28	6.2	0.04
Activity rate	59.88	-0.11	-	0.05	-
Unemployment rate	21.29	0.96	-	1.24	-
Population aged 16 to 64 years	30,777.5	-34.8	-0.11	-72.2	-0.23
Activity rate (16-64)	74.43	-0.04	-	0.35	-
Unemployment rate (16-64)	21.41	0.96	-	1.24	-
Employment rate (16-64)	58.49	-0.75	-	-0.65	-
MALES					
Population aged 16 years and over	18,826.6	-8.4	-0.04	-1.4	-0.01
Active population	12,694.0	-60.9	-0.48	-99.7	-0.78
- Employed	10,059.0	-150.7	-1.48	-181.0	-1.77
- Unemployed	2,635.0	89.8	3.53	81.3	3.18
Inactive	6,132.6	52.6	0.86	98.2	1.63
Activity rate	67.43	-0.29	-	-0.52	-
Unemployment rate	20.76	0.80	-	0.80	-
Population aged 16 to 64 years	15,508.4	-24.4	-0.16	-63.5	-0.41
Activity rate (16-64)	81.33	-0.22	-	-0.27	-
Unemployment rate (16-64)	20.87	0.80	-	0.79	-
Employment rate (16-64)	64.35	-0.82	-	-0.86	-
FEMALES					
Population aged 16 years and over	19,685.4	8.0	0.04	62.7	0.32
Active population	10,367.9	18.0	0.17	154.6	1.51
- Employed	8,092.7	-105.8	-1.29	-61.5	-0.75
- Unemployed	2,275.2	123.8	5.75	216.1	10.50
Inactive	9,317.6	-10.0	-0.11	-92.0	-0.98
Activity rate	52.67	0.07	-	0.62	-
Unemployment rate	21.94	1.16	-	1.78	-
Population aged 16 to 64 years	15,269.1	-10.4	-0.07	-8.7	-0.06
Activity rate (16-64)	67.43	0.15	-	1.00	-
Unemployment rate (16-64)	22.08	1.16	-	1.80	-
Employment rate (16-64)	52.54	-0.66	-	-0.42	-

2. Spanish population¹ aged 16 years and over by labour status

SPANISH POPULATION AGED 16 YEARS AND OVER	33,802.6	19.3	0.06	106.8	0.32
Active population	19,488.6	-12.8	-0.07	156.4	0.81
- Employed	15,721.6	-178.5	-1.12	-129.2	-0.82
- Unemployed	3,767.0	165.7	4.60	285.7	8.21
Inactive	14,314.0	32.1	0.22	-49.6	-0.35
Activity rate	57.65	-0.07	-	0.28	-
Unemployment rate	19.33	0.86	-	1.32	-

¹ including dual nationality

National results

(Continuation)

	Current quarter	Variation on previous quarter		Variation on same quarter, previous year	
		Difference	Percentage	Difference	Percentage

3. Foreign population aged 16 years and over by labour status

FOREIGN POPULATION AGED 16 YEARS AND OVER	4,709.4	-19.7	-0.42	-45.6	-0.96
Active population	3,573.3	-30.2	-0.84	-101.5	-2.76
- Employed	2,430.0	-78.0	-3.11	-113.2	-4.45
- Unemployed	1,143.2	47.9	4.37	11.8	1.04
Inactive	1,136.2	10.5	0.93	55.8	5.17
Activity rate	75.87	-0.32	-	-1.41	-
Unemployment rate	31.99	1.60	-	1.20	-

4. Employed by sex, age group and economic sector

BOTH SEXES	18,151.7	-256.5	-1.39	-242.5	-1.32
16 to 19 years	115.0	-8.4	-6.80	-40.6	-26.12
20 to 24 years	928.5	-71.7	-7.17	-121.8	-11.60
25 to 29 years	1,985.3	-85.3	-4.12	-188.4	-8.67
30 to 34 years	2,755.3	-70.9	-2.51	-96.3	-3.38
35 to 39 years	2,879.5	-4.1	-0.14	78.1	2.79
40 to 44 years	2,650.6	-11.1	-0.42	-14.4	-0.54
45 to 49 years	2,414.4	-29.4	-1.20	19.7	0.82
50 to 54 years	2,037.4	6.6	0.32	56.0	2.83
55 and over	2,385.6	17.8	0.75	65.3	2.81
MALES	10,059.0	-150.7	-1.48	-181.0	-1.77
16 to 19 years	69.3	-3.8	-5.15	-25.5	-26.95
20 to 24 years	467.6	-45.1	-8.80	-65.6	-12.31
25 to 29 years	1,023.2	-45.4	-4.25	-85.2	-7.69
30 to 34 years	1,503.3	-30.5	-1.99	-59.8	-3.82
35 to 39 years	1,602.0	-9.0	-0.56	14.3	0.90
40 to 44 years	1,481.9	-11.1	-0.74	6.0	0.41
45 to 49 years	1,344.8	-17.4	-1.28	2.9	0.21
50 to 54 years	1,148.3	4.2	0.37	27.1	2.41
55 and over	1,418.6	7.4	0.52	5.0	0.35
FEMALES	8,092.7	-105.8	-1.29	-61.5	-0.75
16 to 19 years	45.7	-4.6	-9.19	-15.1	-24.82
20 to 24 years	460.9	-26.6	-5.45	-56.2	-10.86
25 to 29 years	962.1	-39.9	-3.98	-103.2	-9.69
30 to 34 years	1,252.0	-40.4	-3.12	-36.5	-2.83
35 to 39 years	1,277.5	4.9	0.38	63.8	5.26
40 to 44 years	1,168.7	0.0	0.00	-20.4	-1.72
45 to 49 years	1,069.7	-12.0	-1.11	16.8	1.60
50 to 54 years	889.1	2.4	0.27	29.0	3.37
55 and over	967.0	10.4	1.09	60.4	6.66
TOTAL EMPLOYED	18,151.7	-256.5	-1.39	-242.5	-1.32
Agriculture	783.2	-21.3	-2.65	-52.0	-6.23
Industry	2,540.8	-82.0	-3.13	-59.0	-2.27
Construction	1,494.0	-78.5	-4.99	-169.0	-10.16
Services	13,333.7	-74.6	-0.56	37.6	0.28

National results

(Continuation)

	Current quarter	Variation on previous quarter		Variation on same quarter, previous year	
		Difference	Percentage	Difference	Percentage

5. Employed by professional status, type of contract and working hours

TOTAL EMPLOYED	18,151.7	-256.5	-1.39	-242.5	-1.32
Self-employed workers	3,024.8	-59.3	-1.92	-105.9	-3.38
- Employers	974.4	-38.8	-3.83	-73.5	-7.01
- Independent workers	1,863.7	-33.9	-1.79	-16.1	-0.86
- Cooperatives members	33.0	-2.6	-7.27	0.3	1.05
- Family workers	153.7	16.0	11.66	-16.7	-9.79
Employees	15,120.8	-193.4	-1.26	-132.4	-0.87
- With a permanent job	11,374.8	-139.1	-1.21	-157.9	-1.37
- With a temporary job	3,746.0	-54.3	-1.43	25.5	0.68
Others	6.0	-3.8	-38.90	-4.1	-40.52
FULL-TIME EMPLOYED	15,585.3	-348.4	-2.19	-357.2	-2.24
Males	9,444.2	-201.2	-2.09	-262.2	-2.70
Females	6,141.1	-147.2	-2.34	-95.0	-1.52
PART-TIME EMPLOYED	2,566.4	91.9	3.72	114.7	4.68
Males	614.8	50.5	8.95	81.2	15.22
Females	1,951.6	41.4	2.17	33.5	1.74

6. Unemployed by sex, age group, and economic sector

BOTH SEXES	4,910.2	213.5	4.55	297.4	6.45
16 to 19 years	214.6	-3.0	-1.39	-16.8	-7.25
20 to 24 years	652.6	29.6	4.75	48.4	8.01
25 to 54 years	3,662.3	186.1	5.35	235.1	6.86
55 and over	380.6	0.9	0.22	30.7	8.78
MALES	2,635.0	89.8	3.53	81.3	3.18
16 to 19 years	122.7	0.5	0.40	-15.8	-11.42
20 to 24 years	359.2	12.7	3.68	17.0	4.97
25 to 54 years	1,923.3	85.6	4.66	58.3	3.13
55 and over	229.8	-9.1	-3.79	21.8	10.47
FEMALES	2,275.2	123.8	5.75	216.1	10.50
16 to 19 years	91.9	-3.5	-3.68	-1.0	-1.03
20 to 24 years	293.4	16.8	6.09	31.4	11.98
25 to 54 years	1,739.1	100.5	6.14	176.8	11.31
55 and over	150.8	9.9	7.03	8.9	6.30
TOTAL UNEMPLOYED	4,910.2	213.5	4.55	297.4	6.45
Agriculture	226.2	17.2	8.23	27.5	13.81
Industry	253.0	21.2	9.15	-49.6	-16.38
Construction	442.4	3.3	0.75	-159.1	-26.45
Services	1,505.4	94.7	6.71	1.1	0.08
Lost their job more than 1 year ago	2,109.3	60.1	2.93	427.6	25.43
First job seekers	373.8	17.0	4.76	49.9	15.41

National results

(Conclusion)

	Current quarter	Variation on previous quarter		Variation on same quarter, previous year	
		Difference	Percentage	Difference	Percentage

7. Unemployment rate by relationship with the reference person

	Current quarter	Difference	Percentage	Difference	Percentage
TOTAL	21.29	0.96	-	1.24	-
Reference person	17.55	0.93	-	0.98	-
Spouse or partner	17.94	0.69	-	1.20	-
Child	35.02	1.71	-	3.08	-
Other relatives	30.47	3.50	-	1.39	-
Unrelated persons	14.64	-4.25	-	-4.93	-

8. Household data

	Current quarter	Difference	Percentage	Difference	Percentage
TOTAL HOUSEHOLDS	17,281.2	28.5	0.17	165.8	0.97
Households with at least one active member	12,951.0	-8.9	-0.07	83.9	0.65
- All member employed	9,066.0	-154.6	-1.68	-129.0	-1.40
- All member unemployed	1,386.0	58.0	4.37	87.5	6.74
Households without any active population	4,330.2	37.4	0.87	81.9	1.93

Mobility according to activity in current and previous quarter

Classification in previous quarter	Classification in current quarter			
	Total	Employed	Unemployed	Inactive
BOTH SEXES				
Total	100.00	100.00	100.00	100.00
Employed	47.47	93.64	18.33	3.15
Unemployed	11.53	4.25	64.88	4.10
Inactive	41.00	2.11	16.79	92.75
MALES				
Total	100.00	100.00	100.00	100.00
Employed	53.94	94.03	19.93	3.36
Unemployed	12.74	4.40	67.82	4.23
Inactive	33.32	1.57	12.25	92.41
FEMALES				
Total	100.00	100.00	100.00	100.00
Employed	41.31	93.15	16.50	3.01
Unemployed	10.38	4.06	61.53	4.02
Inactive	48.31	2.79	21.98	92.97

Grossing up factors of current quarter (forward analysis)

Results by Autonomous City and Community (Continues)

	Current quarter	Variation on previous quarter		Variation on same quarter, previous year	
		Difference	Percentage	Difference	Percentage
1. Population aged 16 years and over					
TOTAL	38,512.0	-0.4	0.00	61.2	0.16
Andalucía	6,779.4	8.7	0.13	35.7	0.53
Aragón	1,110.8	-0.4	-0.03	-1.0	-0.09
Asturias, Principado de	928.4	-1.0	-0.11	-4.3	-0.46
Balears, Illes	899.2	0.4	0.05	7.1	0.79
Canarias	1,752.9	3.6	0.20	13.0	0.74
Cantabria	494.1	-0.3	-0.06	-0.9	-0.19
Castilla y León	2,143.9	-2.1	-0.10	-8.4	-0.39
Castilla-La Mancha	1,705.1	1.8	0.10	8.0	0.47
Cataluña	6,068.2	-8.9	-0.15	3.7	0.06
Comunitat Valenciana	4,174.5	1.1	0.03	2.8	0.07
Extremadura	907.7	0.3	0.03	1.1	0.13
Galicia	2,380.5	-1.6	-0.07	-4.5	-0.19
Madrid, Comunidad de	5,266.9	-1.3	-0.02	8.7	0.17
Murcia, Región de	1,188.8	0.6	0.05	3.1	0.26
Navarra, Comunidad Foral de	513.4	-0.1	-0.01	0.9	0.18
País Vasco	1,820.3	-1.5	-0.08	-4.0	-0.22
Rioja, La	262.5	-0.3	-0.11	-1.7	-0.64
Ceuta	59.6	0.2	0.31	0.9	1.57
Melilla	55.9	0.3	0.50	1.1	1.97

2. Active population

TOTAL	23,061.8	-42.9	-0.19	55.0	0.24
Andalucía	4,001.3	24.8	0.62	29.2	0.74
Aragón	643.6	-0.1	-0.01	-12.0	-1.84
Asturias, Principado de	477.4	-0.1	-0.02	-6.1	-1.27
Balears, Illes	568.1	-10.5	-1.81	-0.3	-0.06
Canarias	1,095.3	9.7	0.90	7.2	0.66
Cantabria	273.8	-1.1	-0.39	-3.6	-1.28
Castilla y León	1,177.4	-6.2	-0.52	5.2	0.44
Castilla-La Mancha	991.6	1.2	0.12	8.4	0.85
Cataluña	3,827.1	6.8	0.18	52.0	1.38
Comunitat Valenciana	2,487.3	-26.5	-1.06	-43.2	-1.71
Extremadura	498.6	1.6	0.33	12.5	2.57
Galicia	1,307.2	10.6	0.82	9.5	0.73
Madrid, Comunidad de	3,383.6	-56.7	-1.65	-31.9	-0.93
Murcia, Región de	734.2	-13.1	-1.76	0.0	0.00
Navarra, Comunidad Foral de	311.3	4.5	1.46	4.9	1.60
País Vasco	1,063.0	8.6	0.81	20.6	1.97
Rioja, La	156.1	0.3	0.18	0.0	0.00
Ceuta	33.0	0.8	2.42	-0.2	-0.74
Melilla	32.0	2.5	8.45	3.0	10.16

* Data below 5000 are subject to strong variations, due to sampling error

Results by Autonomous City and Community (Conclusion)

	Current quarter	Variation on previous quarter		Variation on same quarter, previous year	
		Difference	Percentage	Difference	Percentage
3. Employed					
TOTAL	18,151.7	-256.5	-1.39	-242.5	-1.32
Andalucía	2,813.8	-35.3	-1.24	-77.4	-2.68
Aragón	528.0	-12.2	-2.27	-27.9	-5.02
Asturias, Principado de	390.6	-7.4	-1.86	-12.9	-3.21
Balears, Illes	424.0	-26.0	-5.77	-17.0	-3.86
Canarias	782.9	11.7	1.52	-4.0	-0.51
Cantabria	228.9	-4.9	-2.09	-8.2	-3.46
Castilla y León	972.9	-23.9	-2.40	-13.4	-1.36
Castilla-La Mancha	775.5	-3.6	-0.47	4.5	0.59
Cataluña	3,099.5	-34.1	-1.09	0.6	0.02
Comunitat Valenciana	1,887.4	-50.5	-2.61	-59.9	-3.08
Extremadura	373.6	-4.6	-1.21	1.5	0.40
Galicia	1,080.7	-12.5	-1.14	-16.4	-1.50
Madrid, Comunidad de	2,861.6	-36.8	-1.27	-1.5	-0.05
Murcia, Región de	542.1	-18.5	-3.30	-22.0	-3.90
Navarra, Comunidad Foral de	269.6	-1.5	-0.56	0.9	0.35
País Vasco	939.5	0.0	0.00	10.8	1.16
Rioja, La	132.0	0.6	0.46	-0.3	-0.25
Ceuta	24.2	0.1	0.24	-1.5	-5.87
Melilla	24.8	3.0	13.70	1.9	8.13

4. Unemployed

TOTAL	4,910.2	213.5	4.55	297.4	6.45
Andalucía	1,187.6	60.2	5.34	106.7	9.87
Aragón	115.5	12.2	11.79	15.9	15.96
Asturias, Principado de	86.9	7.3	9.16	6.8	8.48
Balears, Illes	144.1	15.5	12.03	16.7	13.09
Canarias	312.4	-2.0	-0.63	11.2	3.73
Cantabria	44.8	3.8	9.26	4.6	11.56
Castilla y León	204.5	17.8	9.52	18.6	10.02
Castilla-La Mancha	216.1	4.8	2.29	3.9	1.82
Cataluña	727.6	40.9	5.95	51.4	7.60
Comunitat Valenciana	599.9	24.0	4.16	16.7	2.87
Extremadura	125.0	6.2	5.21	11.0	9.63
Galicia	226.5	23.0	11.32	25.9	12.92
Madrid, Comunidad de	522.1	-19.9	-3.68	-30.4	-5.50
Murcia, Región de	192.1	5.4	2.89	22.0	12.92
Navarra, Comunidad Foral de	41.7	6.0	16.76	4.0	10.48
País Vasco	123.5	8.6	7.48	9.8	8.58
Rioja, La	24.1	-0.3	-1.33	0.3	1.40
Ceuta	8.7	0.7	9.04	1.3	(:)
Melilla	7.2	-0.5	-6.45	1.1	(:)

* Data below 5,000 are subject to strong variations, due to sampling error

(:) The variation percentages calculated from low figures with high sampling errors are not significant

Results by Autonomous City and Community

(Absolute figures in thousands and rates in percentage)

5. Employed and unemployed by sex. Activity and unemployment rates

	Both sexes				Males				Females			
	Employed	Unemployed	Activity rate	Unem. rate	Employed	Unemployed	Activity rate	Unem. Rate	Employed	Unemployed	Activity rate	Unem. Rate
TOTAL	18,151.7	4,910.2	59.88	21.29	10,059.0	2,635.0	67.43	20.76	8,092.7	2,275.2	52.67	21.94
Andalucía	2,813.8	1,187.6	59.02	29.68	1,618.0	630.9	67.49	28.05	1,195.8	556.7	50.84	31.77
Aragón	528.0	115.5	57.94	17.95	294.6	63.3	65.21	17.69	233.4	52.2	50.84	18.27
Asturias, Principado de	390.6	86.9	51.43	18.20	210.2	44.7	57.95	17.55	180.4	42.1	45.55	18.94
Balears, Illes	424.0	144.1	63.17	25.36	234.2	74.3	68.87	24.08	189.8	69.8	57.51	26.89
Canarias	782.9	312.4	62.48	28.52	428.8	175.7	69.58	29.07	354.0	136.7	55.50	27.85
Cantabria	228.9	44.8	55.40	16.37	126.5	26.3	63.81	17.19	102.4	18.6	47.51	15.34
Castilla y León	972.9	204.5	54.92	17.37	552.8	103.9	62.20	15.82	420.1	100.6	47.86	19.33
Castilla-La Mancha	775.5	216.1	58.16	21.79	469.6	110.7	67.87	19.07	305.9	105.4	48.39	25.63
Cataluña	3,099.5	727.6	63.07	19.01	1,675.1	410.0	70.48	19.66	1,424.4	317.7	56.02	18.23
Comunitat Valenciana	1,887.4	599.9	59.58	24.12	1,048.4	327.0	66.79	23.77	839.0	272.9	52.56	24.54
Extremadura	373.6	125.0	54.93	25.06	224.5	65.3	64.72	22.53	149.1	59.6	45.39	28.57
Galicia	1,080.7	226.5	54.91	17.33	583.8	116.9	61.64	16.68	496.8	109.7	48.77	18.08
Madrid, Comunidad de	2,861.6	522.1	64.24	15.43	1,522.5	267.4	71.08	14.94	1,339.1	254.7	57.98	15.98
Murcia, Región de	542.1	192.1	61.76	26.16	310.0	111.9	70.46	26.53	232.1	80.2	52.93	25.67
Navarra, Comunidad Foral de	269.6	41.7	60.64	13.40	150.0	21.6	67.53	12.59	119.6	20.1	53.88	14.39
País Vasco	939.5	123.5	58.40	11.61	505.1	64.2	64.84	11.27	434.4	59.3	52.39	12.01
Rioja, La	132.0	24.1	59.49	15.44	74.3	13.0	67.29	14.88	57.7	11.1	51.87	16.15
Ceuta	24.2	8.7	55.33	26.43	16.2	4.5	66.94	21.86	8.1	4.2	42.84	34.11
Melilla	24.8	7.2	57.29	22.48	14.3	3.5	67.13	19.72	10.5	3.7	48.41	25.93

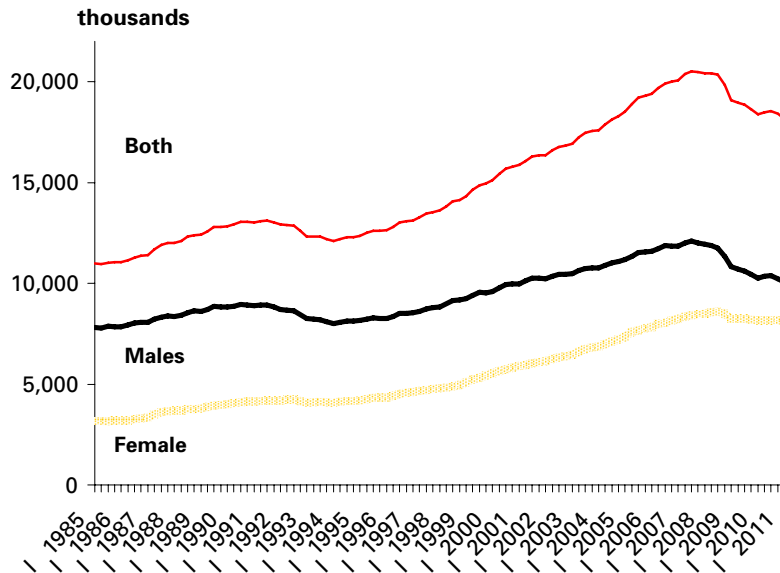
* Data below 5,000 are subject to strong variations, due to sampling errors

EAPS - (ANNEXE TO THE TABLES) First Quarter 2011 (7/7)

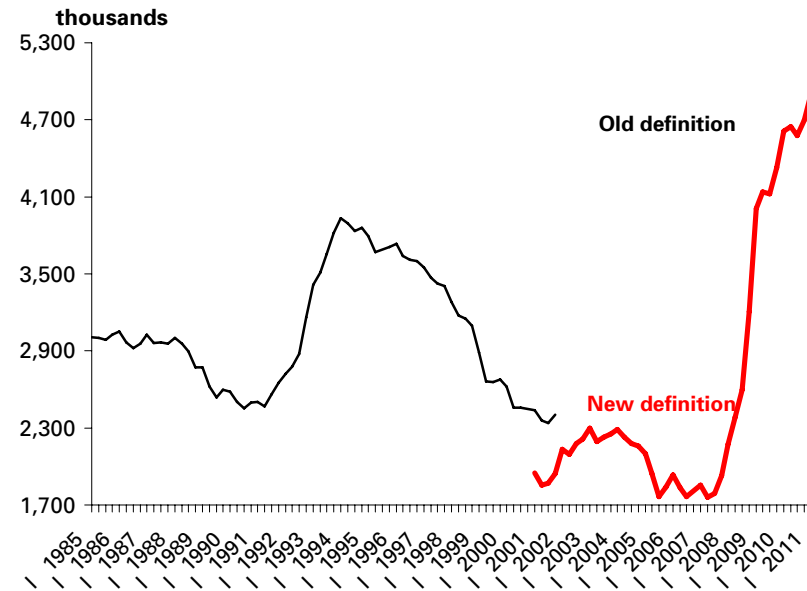
Employed and unemployed by sex

APS First Quarter 2011

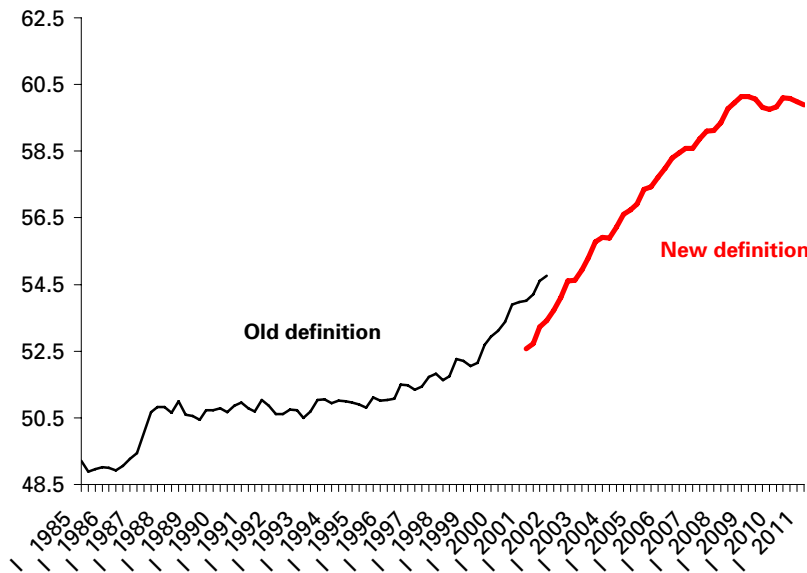
Employment



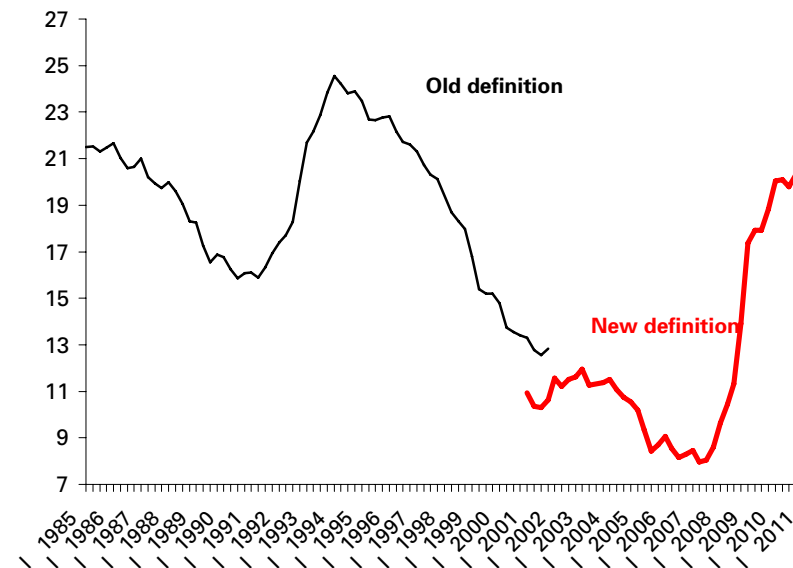
Unemployment



Activity rate



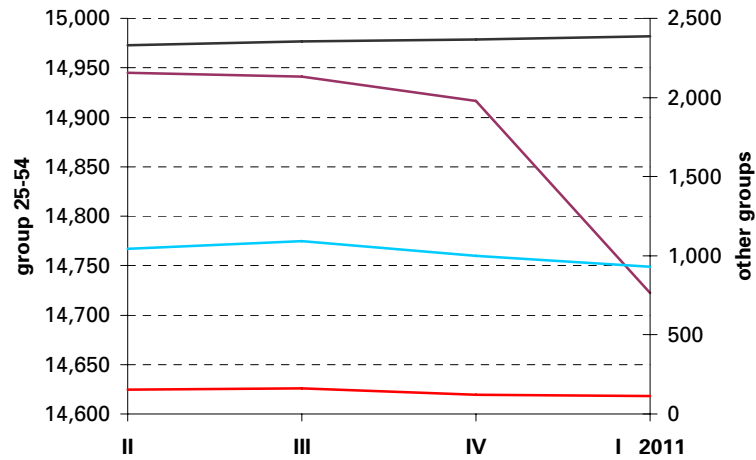
Unemployment rate



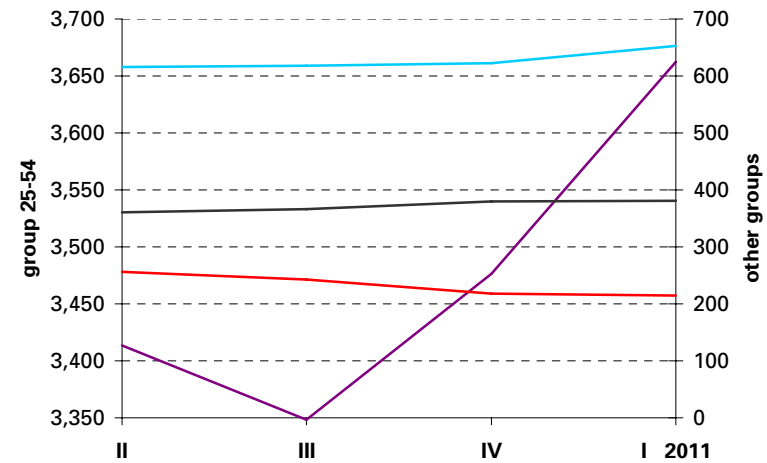
Employed and Unemployed by age

APS First Quarter 2011

Employment (thousands)

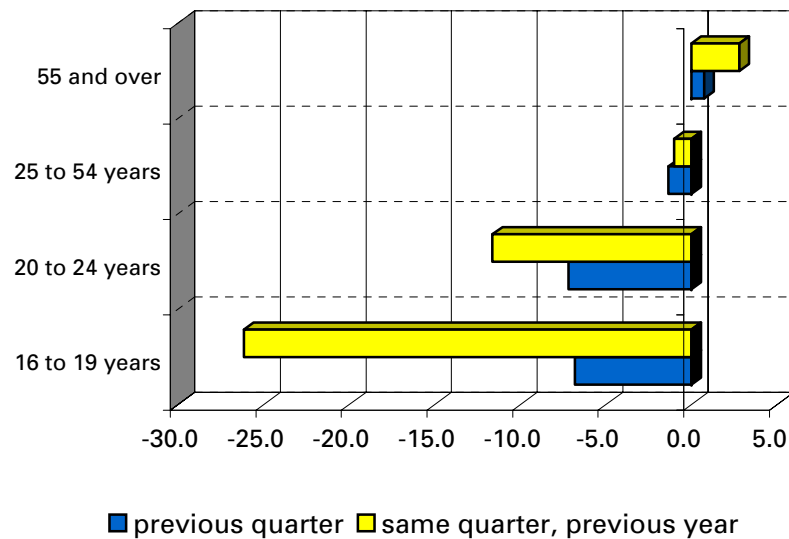


Unemployment (thousands)

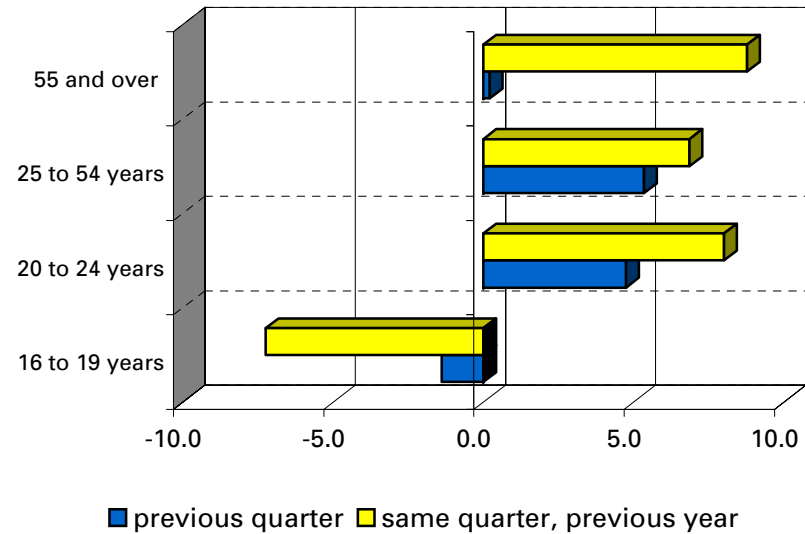


Variation percentages over the previous quarter and over the same quarter of the previous year

Employment

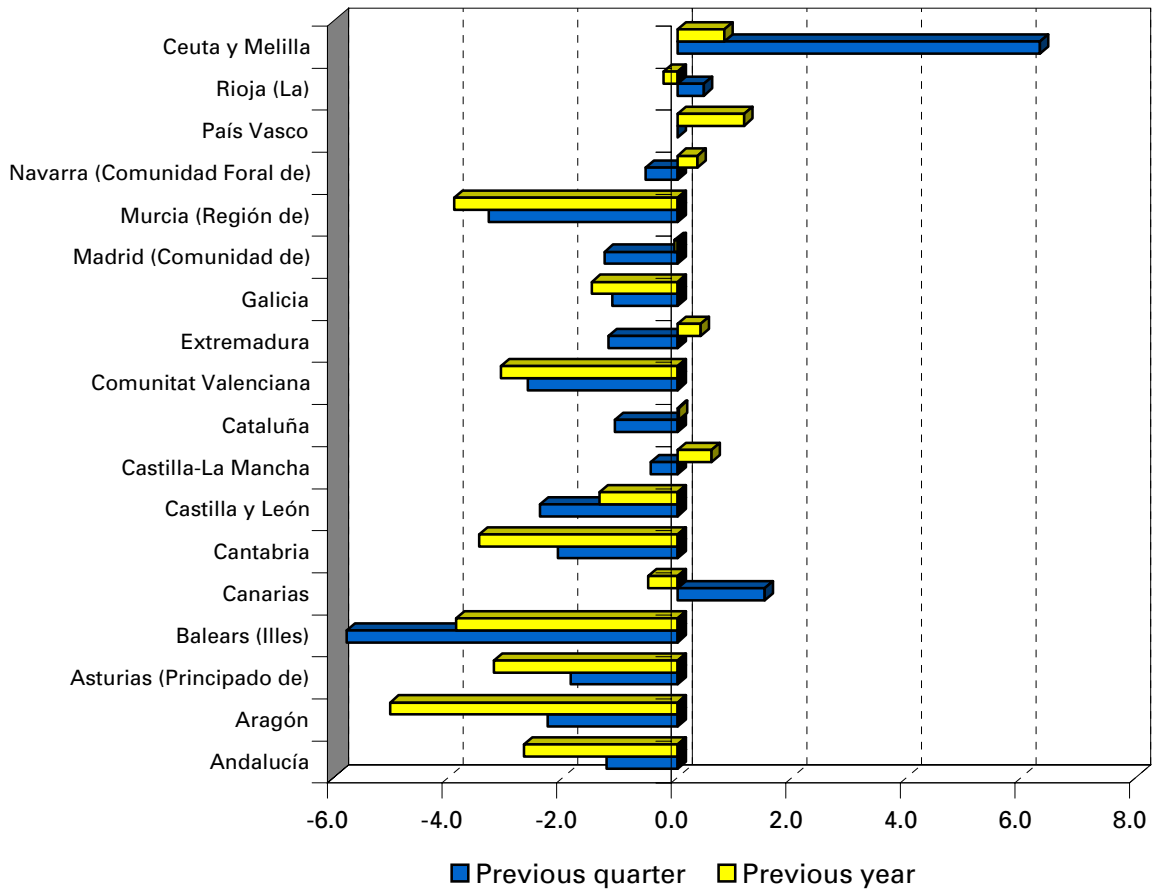


Unemployment



Employment variation percentages over the previous quarter and over the same quarter of the previous year

First Quarter 2011



Unemployment rate (Spain = 20.33)

