

Economically Active Population Survey (EAPS)

First quarter of 2013

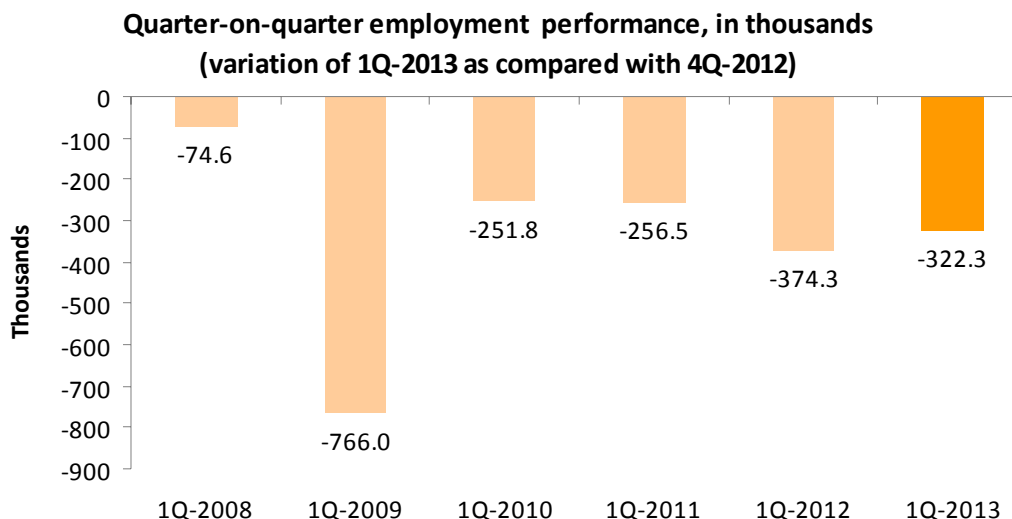
Main results

- Employment in the first quarter of 2013 registers a decrease of 322,300 persons, reaching a total of 16,634,700 employed persons. The quarterly employment variation rate stands at -1.90% and the annual rate stands at -4.58% . Employment decreases by 71,400 persons in public employment, and by 251,000 in private employment.
- The number of independent workers or businesspersons without wage earners increases 22,100 this quarter. However, the number of self-employed workers decreases by 9,900. The total number of wage earners with a permanent contract decreases by 118,400, and wage earners with a temporary contract decrease by 194,400.
- Employment decreases by 170,500 persons in *Services*, by 66,800 in *Industry*, by 60,900 in *Agriculture* and by 24,200 in *Construction*.
- The Autonomous Communities with the greatest decreases in employment, as compared with the previous quarter, are: Andalucía (57,100 fewer employed persons), Cataluña (35,700) and Aragón (35,200).
- Illes Balears is the only Autonomous Community with a positive interannual variation rate for employment (0.37%). Extremadura (-2.12%), Comunitat Valenciana (-2.64%) and Canarias (-2.70%) have the lowest negative interannual rates. In turn, the greatest decreases in the interannual rate of employment are registered in Castilla-La Mancha (-7.36%), Región de Murcia (-6.60%) and Cantabria (-6.21%).
- The number of unemployed persons increases by 237,400 persons and reaches the figure of 6,202,700. The unemployment rate increases 1.14 points, standing at 27,16%.
- Increases in unemployment affects almost all Autonomous Communities. The greatest increases, as compared with the previous quarter, are registered in Andalucía (31,100 more unemployed persons), Comunitat Valenciana (27,400) and Illes Balears (24,900).

Employment ¹

The number of employed persons decreased by 322,300 persons in the first quarter of 2013, standing at 16,634,700. The quarterly variation rate of employment stood at -1.90% .

The employment rate decrease was not as sharp as it was in the same quarter of last year.



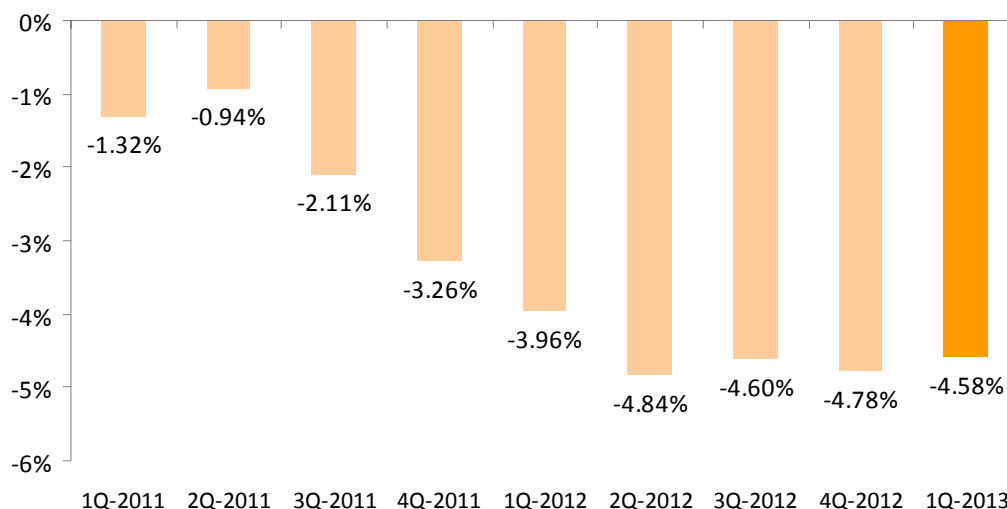
By sex, the drop in employment was greater among men (-199,500 fewer employed men) than among women (-122,800). By nationality, employment decreased by 218,700 among the Spaniards and by 103,600 among the foreign nationals.

The decrease in employment affected practically every age group, especially that aged 25-29 years old (69,000 fewer employed persons).

In the last 12 months, employment has dropped by 798,500 persons, (490,200 men and 308,300 women). The annual variation rate of employment was -4.58% , 2 tenths more than that registered the previous quarter.

¹ As a novelty, in line with the rest of the short-term statistics, it is available in INEbase the quarter-on-quarter variations of the employment and unemployment seasonally adjusted series.

Total performance of employed persons, as an annual rate



This quarter, the number of employed persons decreased in every sector. In *Services* did so by 170,500, in *Industry* by 66,800, in *Agriculture* by 60,900 and in *Construction* by 24,200.

Full-time employment decreased by 385,300 persons this quarter, whilst part-time employed persons increased by 63,000. The percentage of persons working part time increased 68 hundredths, reaching 16%.

The number of self-employed workers decreased by 9,900 persons the first quarter of 2013. Businesspersons without wage earners or independent workers increased by 22,100.

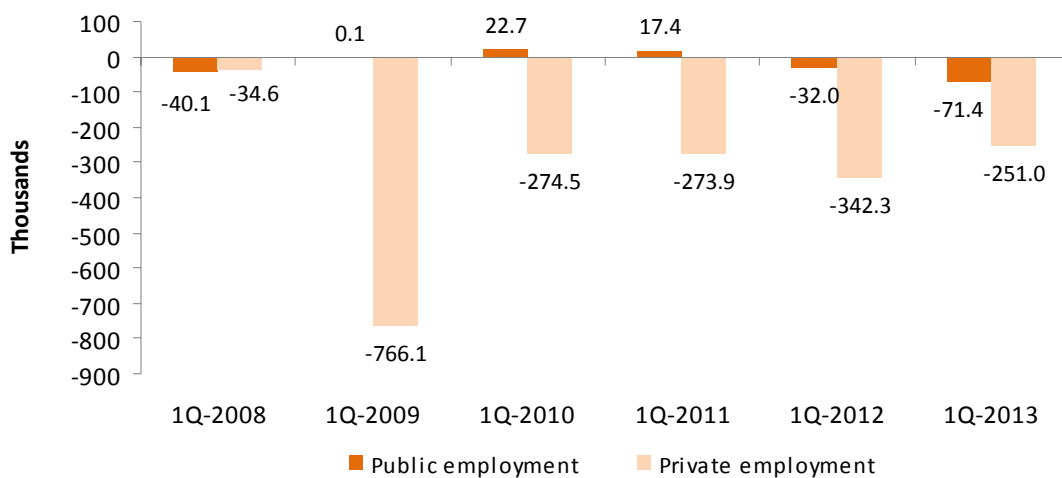
The number of wage earners decreased by 312,800. Those with a permanent contract decreased by 118,400, and those wage earners with temporary contracts did so by 194,400. The temporary employment rate decreased nine tenths, standing at 22.12%.

The number of wage earners dropped by 798,500 over the last 12 months, whereas the number of self-employed workers did so by 2,900.

Private employment² dropped by 251,000 persons this quarter, and stood at 13,788,900. In turn, public employment decreased by 71,400 persons, reaching 2,845,800.

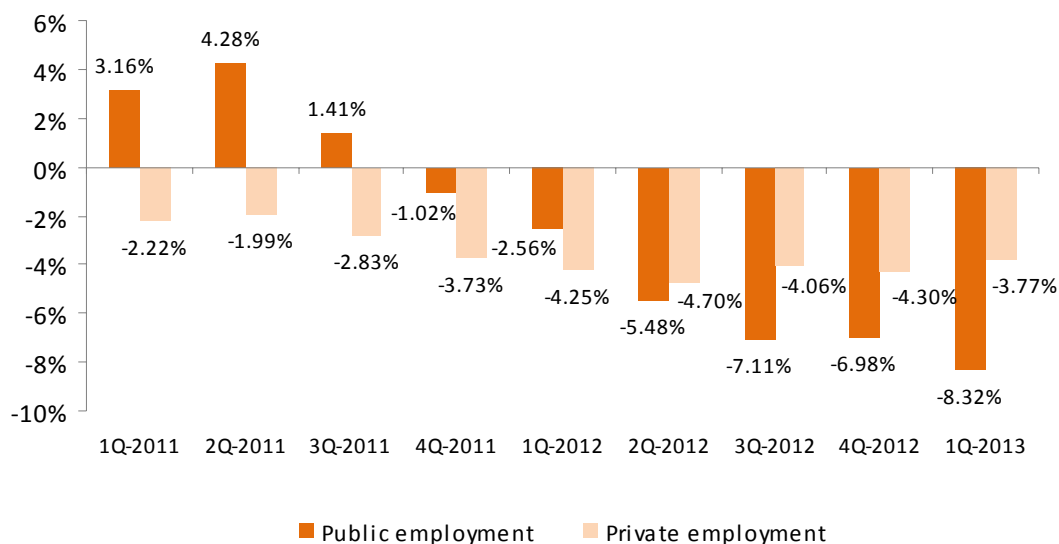
² Employment in the private sector includes: wage earners from the private sector, employers, independent workers and businesspersons without wage earners, members of a cooperative, family assistance and other professional situations. Employment in the public sector includes all the wage earners of public enterprises and of the National and Regional Administrations, including both workers contributing to the SS and those attached to an Insurance society.

Quarter-on-quarter employment performance by nature of the employer, in thousands (variation of 1Q-2013, as compared with 4Q-2012)



Both public and private employment showed negative annual variations. Public employment registered a -8.32% rate, while employment decreased at a rate of 3.77% in the private sector.

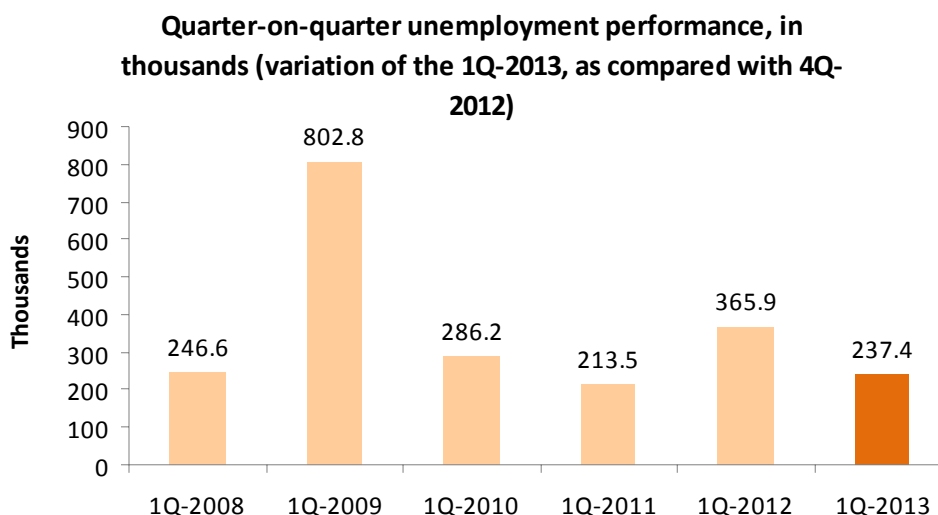
Employment performance by nature of the employer, as an annual rate



Unemployment and unemployment rate³

Unemployment increased by 237,400 persons this quarter, standing at 6,202,700. Over the last year, the total figure of unemployed persons increased by 563,200 persons.

Comparing the performance of unemployment this quarter to the same period in previous years, it is worth noting that the quarterly increase of unemployment was lower than that registered in the first quarter of 2012.



The unemployment rate rose more than one point, as compared with the fourth quarter of 2012, standing at 27.16%.

By sex, unemployment increased by 130,400 among men and by 107,000 among women. The male unemployment rate increased 1.2 points, reaching 26.78%, whilst the female rate increased 1.06 points, and stood at 27.61%. The composition of unemployment observed since the year 2008 remained practically unaltered, with relatively little distance between the male and female rates, and a greater number of unemployed men than unemployed women.

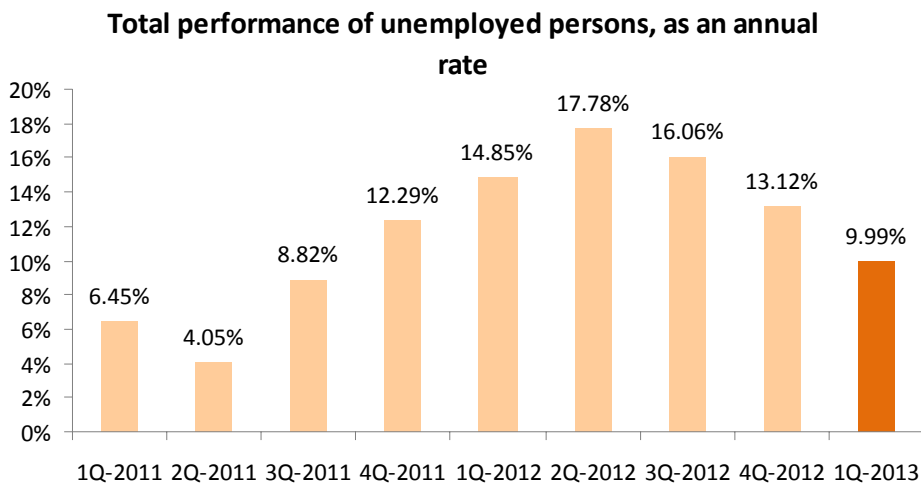
By nationality, unemployment increased by 156,800 among the Spaniards and by 80,500 among the foreign nationals. The unemployment rate for the foreign population was 39.21%, 14.1 points higher than that of persons with Spanish nationality (25.11%).

Unemployment decreased in *Construction* (11,000 fewer unemployed persons). Conversely, it increased in *Services* (86,500 more), *Agriculture* (29,100) and *Industry* (22,800). Unemployment also increased among those persons who lost their job over a year ago (111,200 more), and it decreased among those seeking their first job (1,200 fewer).

The number of unemployed persons increased in all sectors in the last 12 months, except in *Construction* (105,300 fewer). Unemployed persons who lost their job over a year ago increased by 515,700.

³ As a novelty, in line with the rest of the short-term statistics, it is available in INEbase the quarter-on-quarter variations of the employment and unemployment seasonally adjusted series.

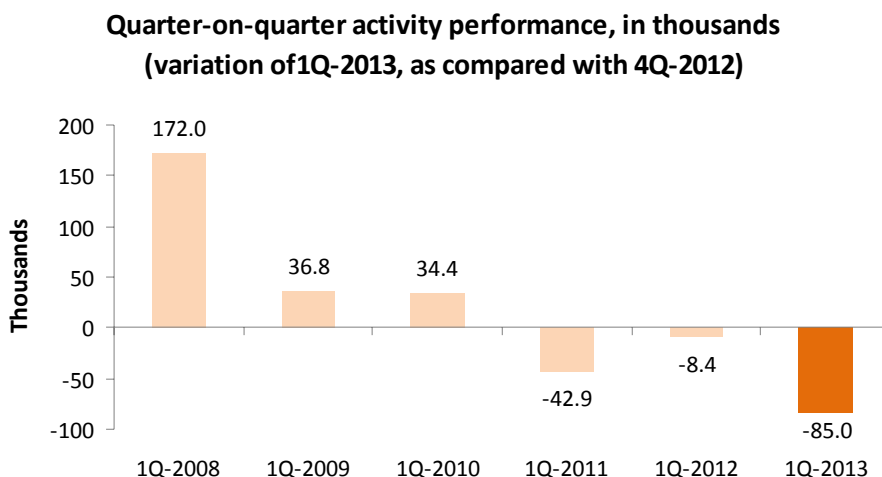
Regarding the annual performance, the increasing unemployment rate (9.99%) was reduced by more than three points, as compared with that from the previous quarter.



Economically active population and activity rate

The economically active population experienced a decrease of 85,000 persons in the first quarter of 2013, standing at 22,837,400 persons. In annual terms, the number of economically active persons was reduced by 235,300 persons.

The decrease in the number of economically active persons in the first quarter of 2013 highlighted the downward trend observed in the first quarters since 2011.

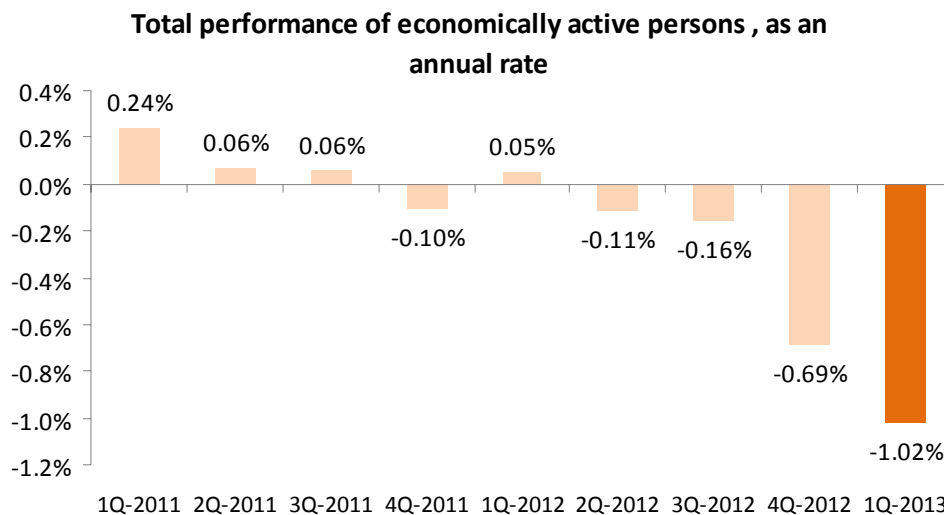


The economic activity rate decreased 12 hundredths, reaching 59.68%. The female activity rate remained almost without variation (53.39%), while the male rate decreased by 21 hundredths and reached 66.31%.

The activity rate of Spaniards decreased by 17 hundredths this quarter, reaching 57.65%. That of foreign nationals increased by 40 hundredths, standing at 75.19%. The distance

between both rates exceeded 17 points in favour of foreign nationals, this circumstance being explained by the different age structures of the two population groups.

The annual variation rate of economically active persons stressed the downward trend of the last quarter.



Mobility as related to economic activity

The percentage of employed persons who were unemployed in the previous quarter was now 4.22%, 81 hundredths less than that recorded in the fourth quarter of 2012.

The proportion of unemployed persons who were employed three months ago decreased by 2.55 points, reaching 13.92%. The percentage of unemployed persons who were already unemployed three months ago decreased by 63 hundredths, standing at 14.64%.

Households

In the first quarter, there were 17,391,500 households in Spain, experiencing a decrease of 14,500, as compared with the fourth quarter 2012.

The number of households in which all economically active members were unemployed, increased by 72,400, standing at 1,906,100.

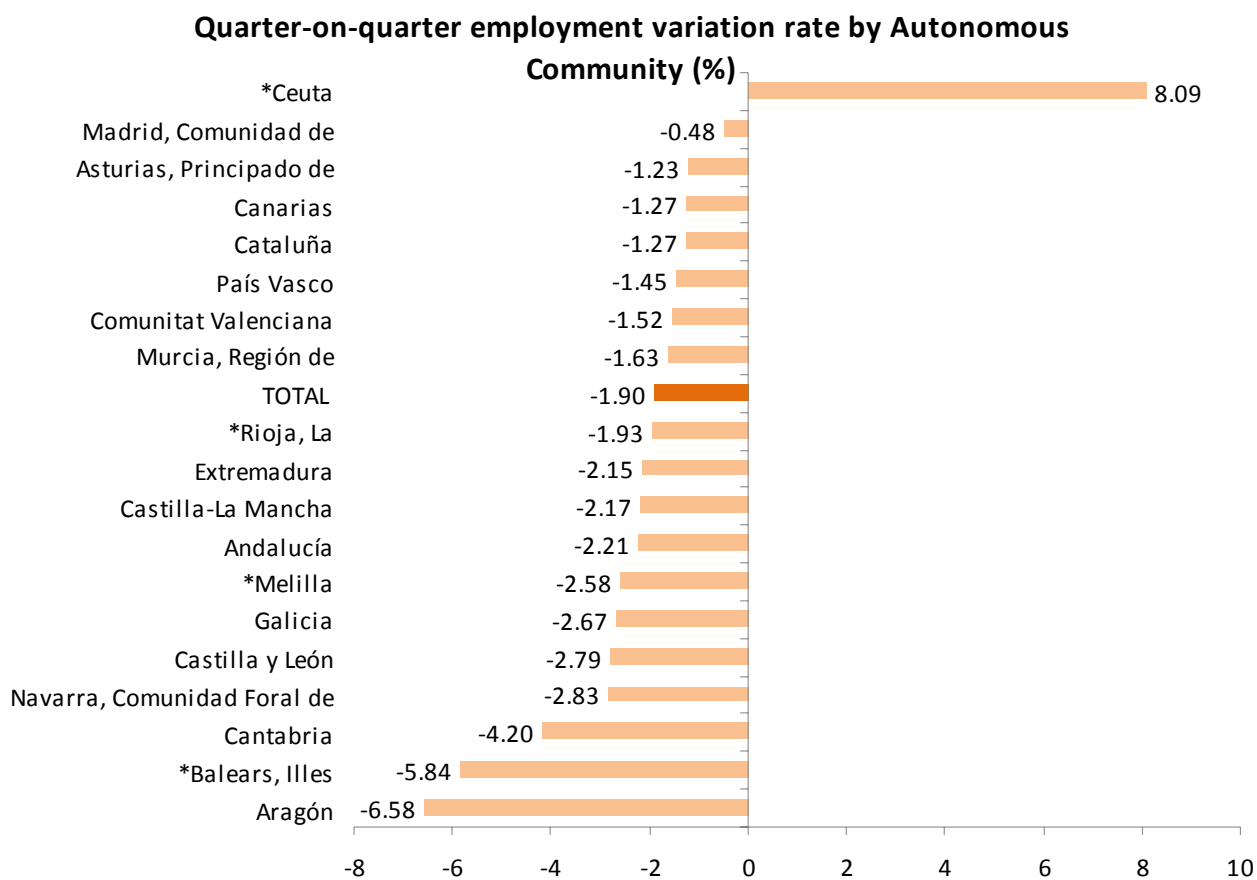
The number of households in which all of the economically active members were employed decreased by 190,400, reaching 8,143,900.

In an interannual comparison, the number of households in which all economically active persons were unemployed increased by 177.700, and the number of those in which all economically active members were employed decreased by 449,800.

Results by Autonomous Community

All Autonomous Communities registered decreases in employment this quarter. Those registering the greatest decreases were Andalucía (57,100 fewer employed persons), Cataluña (35,700), and Aragón (35,200).

In relative terms, the Autonomous Communities with a less negative quarterly employment performance were Comunidad de Madrid (with a 0.48% decrease in employment) and Principado de Asturias (-1.23%). Those registering a greater decrease in employment were Aragón (-6.56%), Illes Balears (-5.84%) and Cantabria (-4.20%).



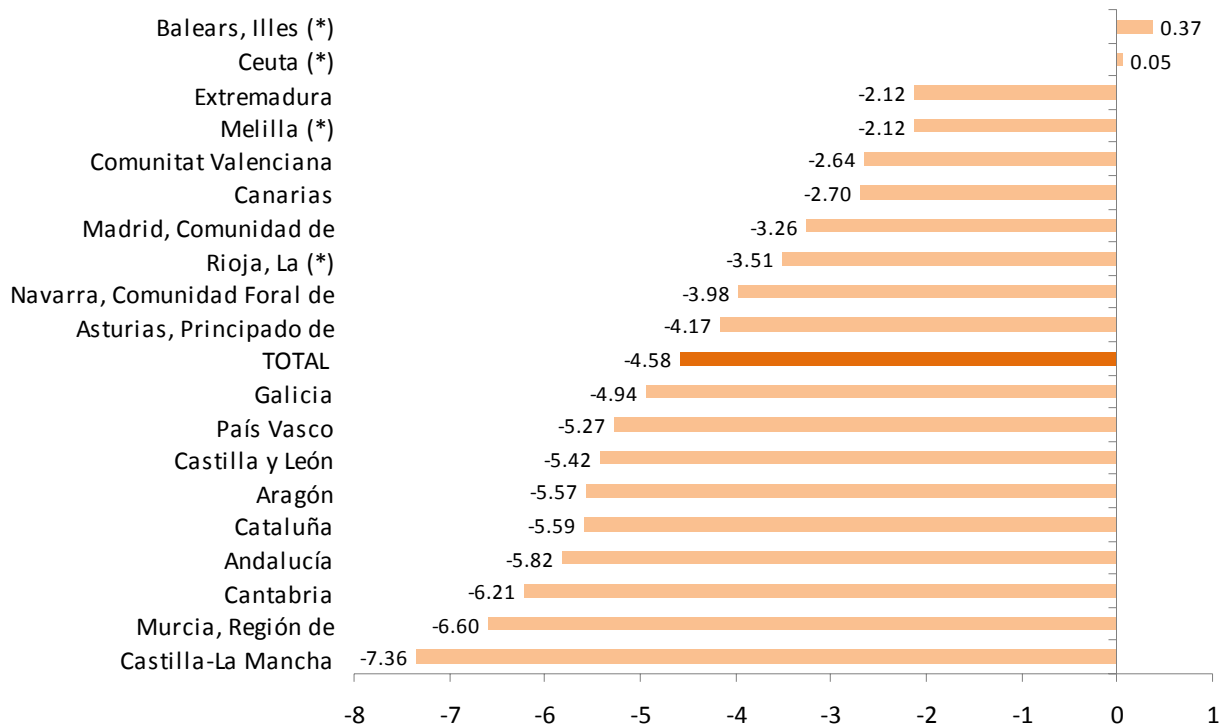
* These rates correspond to absolute values lower than 5,000, that are subject to strong variations due to sampling errors.

During the last year only Illes Balears registered an increase in employment (1,600 more employed persons). The greatest decreases in employment during the last 12 months were registered in Cataluña (164,200 fewer employed persons), Andalucía (155,800) and Comunidad de Madrid (90,100).

Illes Balears is the only Autonomous Community with a positive employment interannual variation rate (0.37%). Extremadura (-2.12%), Comunitat Valenciana (-2.64%) and Canarias (-2.70%) registered the slightest negative rates. In turn, Castilla-La Mancha (-7.36%), Región

de Murcia (-6.60%) and Cantabria (-6.21%) registered the greatest interannual rate drops in employment.

Annual variation rate of employment by Autonomous Community (%)



(*) These rates correspond to absolute values lower than 5,000, that are subject to strong variations due to sampling errors.

Practically all Autonomous Communities registered increases in the number of unemployed persons this quarter. The greatest increases of unemployment were registered in Andalucía (31,100 more unemployed persons), Comunitat Valenciana (27,400) and Illes Balears (24,900).

The greatest annual increases in unemployment were registered in Andalucía (144,100 more unemployed persons), Cataluña (65,300), Comunidad de Madrid (49,500) and Comunitat Valenciana (46,100).

País Vasco maintained the lowest unemployment rate in Spain (16.28%). At the other end of the spectrum, Andalucía registered a 36.87% rate.

The number of employed persons increased this quarter in Canarias (7,700 more), Principado de Asturias (4,000) and Comunidad de Madrid (3,900).

The withdrawal of economically active persons from the labour market was particularly significant this quarter in Andalucía (25,900 fewer), Cataluña (18,600) and Galicia (17,400).

In the last 12 months, the number of economically active persons decreased by 98,900 persons in Cataluña, by 40,600 in Comunidad de Madrid, by 30,100 in Galicia and by 22,700 in País Vasco. During this period, the greatest increases in the number of economically

Methodological note

General features

The Economically Active Population Survey (EAPS) is a continuous sample-based study aimed at family dwellings, and which has been conducted since 1964.

The additional sample collected by the *Galician Statistics Institute* (IGE) has been incorporated as of the third quarter of 2009, using the same fieldwork system and identical methodology to that of the INE. Therefore, apart from the 3,588 census sections that have made up the sample for the whole of Spain since 2005, we must take into account the 234 additional sections in the Autonomous Community of Galicia. Since the third quarter of 2009, the EAPS sample is made up of 3,822 census sections from the more than 30,000 census sections into which Spain is divided. An average of 18 households are surveyed in each one, except in the provinces of Barcelona, Madrid, Sevilla, Valencia and Zaragoza, where the number of households surveyed is 22. Thus, the sample size is approximately 65,000 dwellings, providing information on some 180,000 persons. The data is collected via personal and telephone interviews. The information is carefully filtered and computer-processed. Results are obtained within the month following the end of the reference quarter for the data.

Main definitions

(Economically) Active persons: persons aged 16 years old and over who, during the reference week (the week prior to that when the interview is held), supplied labour for the production of goods and services, or were available to do so and in conditions to incorporate themselves into said production. They are divided into employed and unemployed persons.

Employed persons: persons aged 16 years old and over who, during the reference week, worked for at least one hour in exchange for payment (salary, wage, business benefit, etc.) in cash or in kind. Persons who, being employed, had been temporarily absent from their job due to illness, holidays, etc., are also considered employed persons.

Employed persons are classified, considering their professional status, as non-wage earners (employers, businesspersons without wage earners and independent workers, cooperative members, family assistance) and wage earners (public or private).

Considering the length of the working day, employed persons are classified as full-time and part-time employed persons. The usual working week may not be shorter than 30 hours in the first case, nor exceed 35 hours in the second.

Wage earners are classified as permanent and temporary. For the latter, the end of their contract or work relationship is set by means of objective conditions, such as the expiry of a certain period of time, the completion of a specific task, etc.

A significant category within employment is that of **time-related underemployment**, defined in the 16th International Labour Statisticians Conference (Geneva, 1998). The EAPS considers persons suffering time-related underemployment as employed persons who would like to work more hours, who are available to work more hours and whose effective working hours in the reference week are less than the number of hours usually worked by employed persons working full-time in the same branch of activity as that in which the underemployed person develops his/her main job.

Unemployed persons: persons aged 16 years old and over who, during the reference week, were jobless, available for work, and actively looking for a job. Persons who might have already found a job and are waiting to start are also considered to be unemployed, provided that they meet the first two conditions.

According to European Commission Regulation 1897/2000, the following are considered to be active search methods, in the four weeks prior to the interview:

–Being in contact with a public employment office for the purpose of finding work, whatever part they play in the initiative (the renewal of registration due to purely administrative reasons does not constitute active planning).

–Being in contact with a private office (temporary employment agency, specialised hiring agency, etc.) with the objective of finding work.

–Having sent an application directly to employers.

–Having searched via personal relations and trade unions, etc.

–Having advertised oneself or responded to newspaper advertisements.

–Having studied job vacancies.

–Having taken part in a test, public exam or interview in the framework of a contracting procedure.

–Having looked for land, premises or material.

–Having taken steps to obtain permits, licences or financial resources.

(Economically) Inactive persons: persons aged 16 years old and over not included in any of the above categories.

Economically Active Population Survey First Quarter 2013

National results

(Continues)

	Current quarter	Variation on previous quarter		Variation on same quarter, previous year	
		Difference	Percentage	Difference	Percentage
1. Population aged 16 years and over by sex and labour status					
BOTH SEXES					
Population aged 16 years and over	38,269.5	-63.5	-0.17	-224.1	-0.58
Active population	22,837.4	-85.0	-0.37	-235.3	-1.02
- Employed	16,634.7	-322.3	-1.90	-798.5	-4.58
- Unemployed	6,202.7	237.4	3.98	563.2	9.99
Inactive	15,432.1	21.5	0.14	11.2	0.07
Activity rate	59.68	-0.12	-	-0.26	-
Unemployment rate	27.16	1.14	-	2.72	-
Population aged 16 to 64 years	30,243.2	-97.2	-0.32	-362.9	-1.19
Activity rate (16-64)	75.00	0.00	-	0.13	-
Unemployment rate (16-64)	27.31	1.13	-	2.72	-
Employment rate (16-64)	54.52	-0.84	-	-1.94	-
MALES					
Population aged 16 years and over	18,612.3	-43.9	-0.24	-161.1	-0.86
Active population	12,341.9	-69.2	-0.56	-209.3	-1.67
- Employed	9,037.1	-199.5	-2.16	-490.2	-5.15
- Unemployed	3,304.7	130.4	4.11	280.9	9.29
Inactive	6,270.4	25.3	0.40	48.2	0.77
Activity rate	66.31	-0.21	-	-0.55	-
Unemployment rate	26.78	1.20	-	2.68	-
Population aged 16 to 64 years	15,157.2	-59.7	-0.39	-227.2	-1.48
Activity rate (16-64)	80.83	-0.10	-	-0.18	-
Unemployment rate (16-64)	26.92	1.18	-	2.69	-
Employment rate (16-64)	59.07	-1.03	-	-2.31	-
FEMALES					
Population aged 16 years and over	19,657.2	-19.6	-0.10	-63.0	-0.32
Active population	10,495.6	-15.8	-0.15	-26.1	-0.25
- Employed	7,597.6	-122.8	-1.59	-308.3	-3.90
- Unemployed	2,898.0	107.0	3.83	282.2	10.79
Inactive	9,161.6	-3.8	-0.04	-37.0	-0.40
Activity rate	53.39	-0.03	-	0.04	-
Unemployment rate	27.61	1.06	-	2.75	-
Population aged 16 to 64 years	15,086.0	-37.5	-0.25	-135.6	-0.89
Activity rate (16-64)	69.15	0.12	-	0.48	-
Unemployment rate (16-64)	27.76	1.06	-	2.76	-
Employment rate (16-64)	49.95	-0.65	-	-1.55	-

2. Spanish population⁽¹⁾ aged 16 years and over by labour status

SPANISH POPULATION AGED 16 YEARS AND OVER	33,852.3	-9.2	-0.03	-26.3	-0.08
Active population	19,516.3	-61.8	-0.32	-56.6	-0.29
- Employed	14,615.9	-218.7	-1.47	-610.5	-4.01
- Unemployed	4,900.4	156.8	3.31	554.0	12.75
Inactive	14,336.0	52.7	0.37	30.3	0.21
Activity rate	57.65	-0.17	-	-0.12	-
Unemployment rate	25.11	0.88	-	2.90	-

⁽¹⁾ including dual nationality

April 25th 2013

National results

(Continuation)

	Current quarter	Variation on previous quarter		Variation on same quarter, previous year	
		Difference	Percentage	Difference	Percentage
3. Foreign population aged 16 years and over by labour status					
FOREIGN POPULATION AGED 16 YEARS AND OVER	4,417.2	-54.3	-1.22	-197.9	-4.29
Active population	3,321.2	-23.1	-0.69	-178.8	-5.11
- Employed	2,018.9	-103.6	-4.88	-188.0	-8.52
- Unemployed	1,302.3	80.5	6.59	9.2	0.71
Inactive	1,096.1	-31.2	-2.77	-19.1	-1.71
Activity rate	75.19	0.40	-	-0.65	-
Unemployment rate	39.21	2.68	-	2.27	-

4. Employed by sex, age group and economic sector

BOTH SEXES	16,634.7	-322.3	-1.90	-798.5	-4.58
16 to 19 years	65.2	-2.3	-3.47	-20.3	-23.75
20 to 24 years	652.7	-36.8	-5.34	-112.3	-14.67
25 to 29 years	1,571.5	-69.0	-4.20	-218.4	-12.20
30 to 34 years	2,346.7	-49.9	-2.08	-219.8	-8.57
35 to 39 years	2,723.6	-36.3	-1.31	-70.8	-2.53
40 to 44 years	2,520.1	-31.9	-1.25	-73.0	-2.81
45 to 49 years	2,334.5	-52.0	-2.18	-60.3	-2.52
50 to 54 years	2,043.0	0.8	0.04	0.6	0.03
55 and over	2,377.4	-45.0	-1.86	-24.2	-1.01
MALES	9,037.1	-199.5	-2.16	-490.2	-5.15
16 to 19 years	39.8	0.5	1.19	-7.8	-16.42
20 to 24 years	325.4	-27.4	-7.76	-55.4	-14.54
25 to 29 years	799.8	-45.5	-5.39	-112.1	-12.29
30 to 34 years	1,232.2	-22.6	-1.80	-137.2	-10.02
35 to 39 years	1,490.9	-28.9	-1.90	-38.7	-2.53
40 to 44 years	1,388.7	-5.8	-0.42	-66.3	-4.56
45 to 49 years	1,276.2	-28.8	-2.21	-34.1	-2.60
50 to 54 years	1,118.9	-10.0	-0.88	-11.2	-0.99
55 and over	1,365.1	-31.0	-2.22	-27.4	-1.97
FEMALES	7,597.6	-122.8	-1.59	-308.3	-3.90
16 to 19 years	25.4	-2.8	-9.95	-12.5	-32.95
20 to 24 years	327.3	-9.5	-2.81	-56.9	-14.80
25 to 29 years	771.6	-23.4	-2.95	-106.3	-12.10
30 to 34 years	1,114.5	-27.3	-2.39	-82.6	-6.90
35 to 39 years	1,232.7	-7.4	-0.60	-32.1	-2.54
40 to 44 years	1,131.4	-26.0	-2.25	-6.6	-0.58
45 to 49 years	1,058.3	-23.2	-2.14	-26.3	-2.42
50 to 54 years	924.1	10.8	1.18	11.9	1.30
55 and over	1,012.3	-13.9	-1.36	3.2	0.32
TOTAL EMPLOYED	16,634.7	-322.3	-1.90	-798.5	-4.58
Agriculture	723.2	-60.9	-7.76	-53.0	-6.83
Industry	2,316.7	-66.8	-2.80	-142.6	-5.80
Construction	1,049.7	-24.2	-2.25	-137.0	-11.54
Services	12,545.1	-170.5	-1.34	-465.9	-3.58

National results

(Continuation)

	Current quarter	Variation on previous quarter		Variation on same quarter, previous year	
		Difference	Percentage	Difference	Percentage
5. Employed by professional status, type of contract, public / private sectors and working hours					
TOTAL EMPLOYED	16,634.7	-322.3	-1.90	-798.5	-4.58
BY PROFESSIONAL STATUS					
Self-employed workers	3,012.1	-9.9	-0.33	-2.9	-0.10
- Employers	850.9	-33.7	-3.81	-59.0	-6.48
- Independent workers	2,023.6	22.1	1.10	80.6	4.15
- Cooperatives members	21.6	-2.7	-11.31	-12.3	-36.30
- Family workers	116.0	4.4	3.92	-12.2	-9.50
Employees	13,612.7	-312.8	-2.25	-798.5	-5.54
- With a permanent job	10,601.9	-118.4	-1.10	-384.5	-3.50
- With a temporary job	3,010.8	-194.4	-6.07	-414.0	-12.09
Others	10.0	0.4	4.44	2.9	40.69
BY PUBLIC / PRIVATE SECTORS					
Employed by public sector	2,845.8	-71.4	-2.45	-258.3	-8.32
Employed by private sector	13,788.9	-251.0	-1.79	-540.2	-3.77
BY WORKING HOURS					
Full-time employed	13,973.1	-385.3	-2.68	-954.2	-6.39
Males	8,365.2	-242.2	-2.81	-567.9	-6.36
Females	5,607.9	-143.1	-2.49	-386.2	-6.44
Part-time employed	2,661.7	63.0	2.42	155.7	6.21
Males	671.9	42.7	6.78	77.7	13.08
Females	1,989.7	20.3	1.03	77.9	4.08

*) Private employment are all persons in employment other than public employees. Namely: private employees, employers, independent workers, cooperative members, family workers and other professional status.

6. Unemployed by sex, age group, and economic sector

BOTH SEXES	6,202.7	237.4	3.98	563.2	9.99
16 to 19 years	204.8	12.1	6.25	-9.3	-4.33
20 to 24 years	755.6	18.1	2.46	47.9	6.77
25 to 54 years	4,664.9	160.5	3.56	421.3	9.93
55 and over	577.4	46.7	8.80	103.2	21.77
MALES	3,304.7	130.4	4.11	280.9	9.29
16 to 19 years	119.9	14.1	13.27	2.2	1.83
20 to 24 years	410.2	12.3	3.10	24.1	6.25
25 to 54 years	2,446.7	83.3	3.53	207.4	9.26
55 and over	328.0	20.7	6.72	47.2	16.83
FEMALES	2,898.0	107.0	3.83	282.2	10.79
16 to 19 years	84.9	-2.0	-2.30	-11.4	-11.87
20 to 24 years	345.5	5.8	1.70	23.8	7.40
25 to 54 years	2,218.2	77.1	3.60	213.9	10.67
55 and over	249.4	26.1	11.67	56.0	28.93
TOTAL UNEMPLOYED	6,202.7	237.4	3.98	563.2	9.99
Agriculture	296.3	29.1	10.88	27.0	10.02
Industry	317.6	22.8	7.74	21.0	7.06
Construction	376.9	-11.0	-2.84	-105.3	-21.84
Services	1,823.9	86.5	4.98	73.8	4.22
Lost their job more than 1 year ago	2,901.1	111.2	3.98	515.7	21.62
First job seekers	487.0	-1.2	-0.25	31.0	6.80

National results

(Conclusion)

	Current quarter	Variation on previous quarter		Variation on same quarter, previous year	
		Difference	Percentage	Difference	Percentage

7. Unemployment rate by relationship with the reference person

TOTAL	27.16	1.14	-	2.72	-
Reference person	22.51	1.13	-	2.02	-
Spouse or partner	22.64	0.84	-	2.30	-
Child	44.54	1.52	-	4.63	-
Other relatives	39.15	2.30	-	5.51	-
Unrelated persons	24.08	0.56	-	2.61	-

8. Household data

TOTAL HOUSEHOLDS	17,391.5	-14.5	-0.08	-16.5	-0.09
Households with at least one active men	12,917.1	-28.4	-0.22	-82.2	-0.63
- All member employed	8,143.9	-190.4	-2.28	-449.8	-5.23
- All member unemployed	1,906.1	72.4	3.95	177.7	10.28
Households without any active populatio	4,474.4	14.0	0.31	65.7	1.49

Mobility according to activity in current and previous quarter

Classification in previous quarter	Total	Classification in current quarter		
		Employed	Unemployed	Inactive
BOTH SEXES				
Total	100.00	100.00	100.00	100.00
Employed	44.19	94.01	13.92	2.73
Unemployed	14.88	4.22	71.43	4.56
Inactive	40.93	1.77	14.64	92.72
MALES				
Total	100.00	100.00	100.00	100.00
Employed	49.50	94.48	15.11	2.84
Unemployed	16.28	4.23	74.46	4.52
Inactive	34.22	1.29	10.42	92.64
FEMALES				
Total	100.00	100.00	100.00	100.00
Employed	39.18	93.46	12.59	2.65
Unemployed	13.56	4.21	68.05	4.58
Inactive	47.26	2.34	19.36	92.77

Grossing up factors of current quarter (forward analysis)

Results by Autonomous Communities and Cities

(Continues)

	Current quarter	Variation on previous quarter		Variation on same quarter, previous year	
		Difference	Percentage	Difference	Percentage
1. Population aged 16 years and over					
TOTAL	38,269.5	-63.5	-0.17	-224.1	-0.58
Andalucía	6,799.2	-0.4	-0.01	1.4	0.02
Aragón	1,099.3	-2.2	-0.20	-8.2	-0.74
Asturias, Principado de	915.0	-2.3	-0.25	-8.8	-0.95
Balears, Illes	912.7	0.6	0.06	9.4	1.04
Canarias	1,785.7	4.4	0.24	18.2	1.03
Cantabria	489.4	-1.0	-0.20	-3.8	-0.77
Castilla y León	2,108.1	-5.9	-0.28	-22.3	-1.05
Castilla-La Mancha	1,688.8	-3.7	-0.22	-15.8	-0.93
Cataluña	5,958.0	-23.4	-0.39	-83.6	-1.38
Comunitat Valenciana	4,158.7	-7.4	-0.18	-15.5	-0.37
Extremadura	906.0	-0.5	-0.06	-2.1	-0.23
Galicia	2,356.7	-3.7	-0.16	-14.0	-0.59
Madrid, Comunidad de	5,239.8	-7.8	-0.15	-40.1	-0.76
Murcia, Región de	1,186.8	-1.5	-0.13	-7.6	-0.63
Navarra, Comunidad Foral de	510.8	-1.1	-0.22	-3.6	-0.70
País Vasco	1,777.8	-6.8	-0.38	-25.2	-1.40
Rioja, La	257.5	-0.7	-0.28	-3.6	-1.38
Ceuta, Ciudad Autónoma	60.3	-0.1	-0.19	-0.2	-0.34
Melilla, Ciudad Autónoma	58.9	0.2	0.27	1.3	2.24

2. Active population

TOTAL	22,837.4	-85.0	-0.37	-235.3	-1.02
Andalucía	3,996.6	-25.9	-0.64	-11.8	-0.29
Aragón	644.4	-13.1	-1.99	-4.8	-0.73
Asturias, Principado de	484.4	4.0	0.84	10.3	2.16
Balears, Illes	591.8	-1.3	-0.22	6.7	1.15
Canarias	1,125.3	7.7	0.69	2.7	0.24
Cantabria	272.5	-6.0	-2.16	-9.8	-3.47
Castilla y León	1,156.0	-3.9	-0.33	-14.5	-1.24
Castilla-La Mancha	987.3	-0.4	-0.04	-15.1	-1.51
Cataluña	3,677.9	-18.6	-0.50	-98.9	-2.62
Comunitat Valenciana	2,492.1	0.1	0.00	-1.7	-0.07
Extremadura	510.6	0.7	0.14	15.9	3.21
Galicia	1,285.9	-17.4	-1.33	-30.1	-2.29
Madrid, Comunidad de	3,351.3	3.9	0.12	-40.6	-1.20
Murcia, Región de	728.2	-3.8	-0.52	-15.1	-2.04
Navarra, Comunidad Foral de	305.1	-1.8	-0.58	-2.5	-0.81
País Vasco	1,011.6	-10.6	-1.03	-22.7	-2.19
Rioja, La	147.0	-2.4	-1.63	-7.4	-4.80
Ceuta, Ciudad Autónoma	36.4	3.0	9.11	1.7	4.79
Melilla, Ciudad Autónoma	32.9	0.8	2.35	2.4	7.71

* Data below 5000 are subject to strong variations, due to sampling error

Results by Autonomous Communities and Cities

(Conclusion)

	Current quarter	Variation on previous quarter		Variation on same quarter, previous year	
		Difference	Percentage	Difference	Percentage
3. Employed					
TOTAL	16,634.7	-322.3	-1.90	-798.5	-4.58
Andalucía	2,522.9	-57.1	-2.21	-155.8	-5.82
Aragón	500.3	-35.2	-6.58	-29.5	-5.57
Asturias, Principado de	361.7	-4.5	-1.23	-15.8	-4.17
Balears, Illes	422.8	-26.2	-5.84	1.6	0.37
Canarias	739.7	-9.5	-1.27	-20.6	-2.70
Cantabria	215.5	-9.4	-4.20	-14.3	-6.21
Castilla y León	893.4	-25.7	-2.79	-51.2	-5.42
Castilla-La Mancha	676.2	-15.0	-2.17	-53.7	-7.36
Cataluña	2,775.7	-35.7	-1.27	-164.2	-5.59
Comunitat Valenciana	1,764.6	-27.2	-1.52	-47.8	-2.64
Extremadura	329.0	-7.2	-2.15	-7.1	-2.12
Galicia	998.5	-27.4	-2.67	-51.9	-4.94
Madrid, Comunidad de	2,669.3	-12.8	-0.48	-90.1	-3.26
Murcia, Región de	507.1	-8.4	-1.63	-35.9	-6.60
Navarra, Comunidad Foral de	247.1	-7.2	-2.83	-10.2	-3.98
País Vasco	846.9	-12.4	-1.45	-47.1	-5.27
Rioja, La	119.1	-2.3	-1.93	-4.3	-3.51
Ceuta, Ciudad Autónoma	22.4	1.7	8.09	0.0	0.05
Melilla, Ciudad Autónoma	22.5	-0.6	-2.58	-0.5	-2.12

4. Unemployed

TOTAL	6,202.7	237.4	3.98	563.2	9.99
Andalucía	1,473.7	31.1	2.16	144.1	10.84
Aragón	144.1	22.1	18.15	24.8	20.77
Asturias, Principado de	122.7	8.5	7.48	26.0	26.92
Balears, Illes	169.0	24.9	17.30	5.2	3.15
Canarias	385.6	17.2	4.68	23.3	6.43
Cantabria	56.9	3.4	6.39	4.5	8.53
Castilla y León	262.6	21.8	9.05	36.7	16.23
Castilla-La Mancha	311.1	14.6	4.91	38.6	14.16
Cataluña	902.3	17.1	1.94	65.3	7.81
Comunitat Valenciana	727.5	27.4	3.91	46.1	6.76
Extremadura	181.6	7.9	4.55	23.0	14.52
Galicia	287.4	10.0	3.61	21.8	8.23
Madrid, Comunidad de	682.0	16.7	2.51	49.5	7.82
Murcia, Región de	221.2	4.6	2.12	20.7	10.33
Navarra, Comunidad Foral de	58.0	5.4	10.26	7.8	15.45
País Vasco	164.7	1.9	1.15	24.5	17.45
Rioja, La	27.9	-0.1	-0.31	-3.1	-9.90
Ceuta, Ciudad Autónoma	14.0	1.4	10.79	1.7	(:)
Melilla, Ciudad Autónoma	10.5	1.3	14.81	2.8	(:)

* Data below 5,000 are subject to strong variations, due to sampling error

(:) The variation percentages calculated from low figures with high sampling errors are not significant

Results by Autonomous Communities and Cities

(Absolute figures in thousands and rates in percentage)

5. Employed and unemployed by sex. Activity and unemployment rates

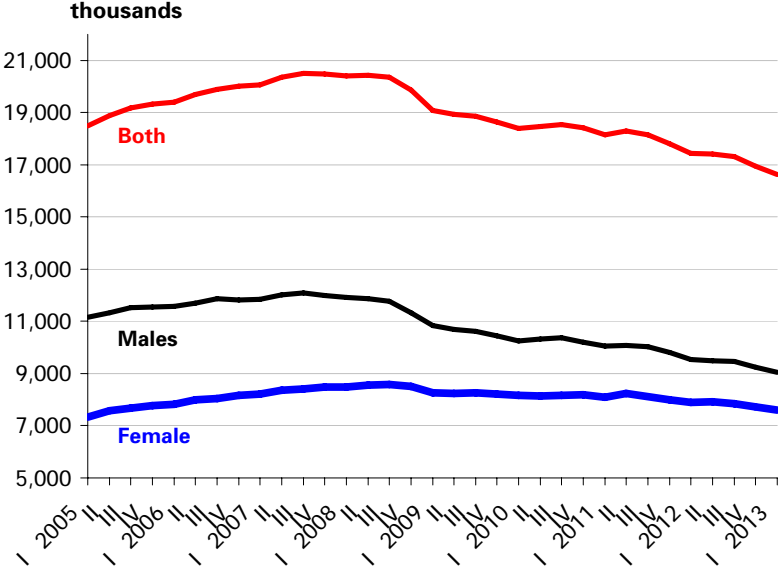
	Both sexes				Males				Females			
	Employed	Unemployed	Activity rate	Unem. rate	Employed	Unemployed	Activity rate	Unem. Rate	Employed	Unemployed	Activity rate	Unem. Rate
TOTAL	16,634.7	6,202.7	59.68	27.16	9,037.1	3,304.7	66.31	26.78	7,597.6	2,898.0	53.39	27.61
Andalucía	2,522.9	1,473.7	58.78	36.87	1,403.8	784.2	65.66	35.84	1,119.1	689.5	52.17	38.12
Aragón	500.3	144.1	58.62	22.36	277.3	76.5	65.43	21.61	223.0	67.6	52.02	23.26
Asturias, Principado de	361.7	122.7	52.94	25.32	191.9	64.0	59.20	25.02	169.8	58.6	47.33	25.67
Balears, Illes	422.8	169.0	64.84	28.56	234.0	90.4	71.64	27.87	188.8	78.6	58.15	29.40
Canarias	739.7	385.6	63.02	34.27	400.4	213.0	69.52	34.73	339.3	172.6	56.67	33.72
Cantabria	215.5	56.9	55.67	20.90	117.9	30.9	62.96	20.76	97.6	26.0	48.87	21.07
Castilla y León	893.4	262.6	54.84	22.71	498.5	136.1	61.25	21.45	395.0	126.4	48.64	24.25
Castilla-La Mancha	676.2	311.1	58.46	31.51	405.2	160.3	66.93	28.34	270.9	150.8	49.98	35.76
Cataluña	2,775.7	902.3	61.73	24.53	1,455.8	491.8	67.87	25.25	1,319.9	410.5	56.03	23.72
Comunitat Valenciana	1,764.6	727.5	59.93	29.19	984.1	382.7	66.87	28.00	780.5	344.8	53.21	30.64
Extremadura	329.0	181.6	56.35	35.56	187.4	98.7	64.00	34.51	141.6	82.8	48.90	36.90
Galicia	998.5	287.4	54.56	22.35	529.1	153.1	60.65	22.44	469.4	134.3	49.01	22.25
Madrid, Comunidad de	2,669.3	682.0	63.96	20.35	1,385.5	352.7	69.79	20.29	1,283.7	329.4	58.67	20.42
Murcia, Región de	507.1	221.2	61.36	30.37	287.7	127.7	69.91	30.74	219.4	93.5	52.79	29.87
Navarra, Comunidad Foral de	247.1	58.0	59.73	19.02	136.3	29.0	65.86	17.55	110.7	29.0	53.80	20.76
País Vasco	846.9	164.7	56.90	16.28	448.6	86.5	63.13	16.16	398.4	78.2	51.23	16.40
Rioja, La	119.1	27.9	57.11	18.98	65.4	14.2	63.20	17.78	53.7	13.8	51.27	20.40
Ceuta, Ciudad Autónoma	22.4	14.0	60.39	38.43	14.7	6.8	70.51	31.53	7.7	7.2	50.08	48.32
Melilla, Ciudad Autónoma	22.5	10.5	55.92	31.76	13.4	6.2	67.88	31.58	9.1	4.3	44.43	32.03

* Data below 5,000 are subject to strong variations, due to sampling errors

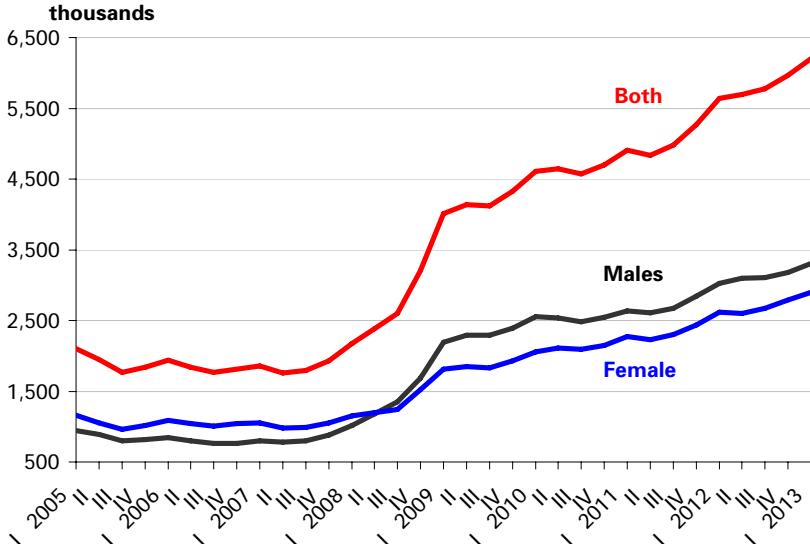
Employed and unemployed by sex

APS First Quarter 2013

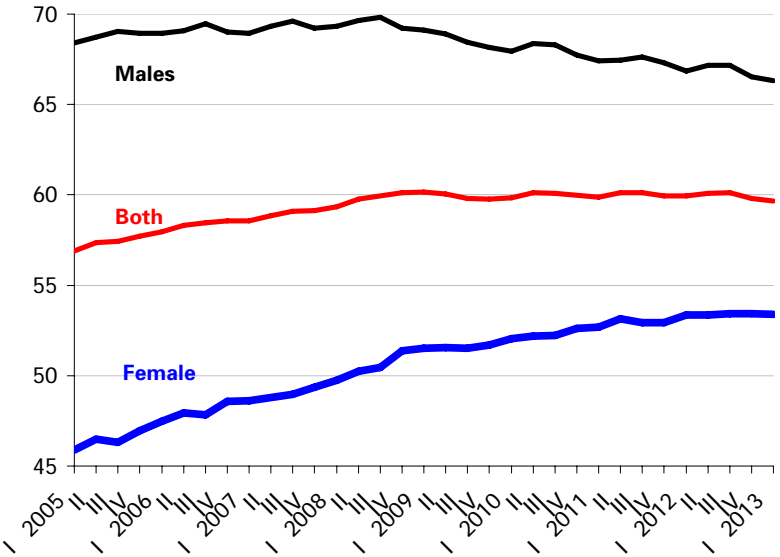
Employment



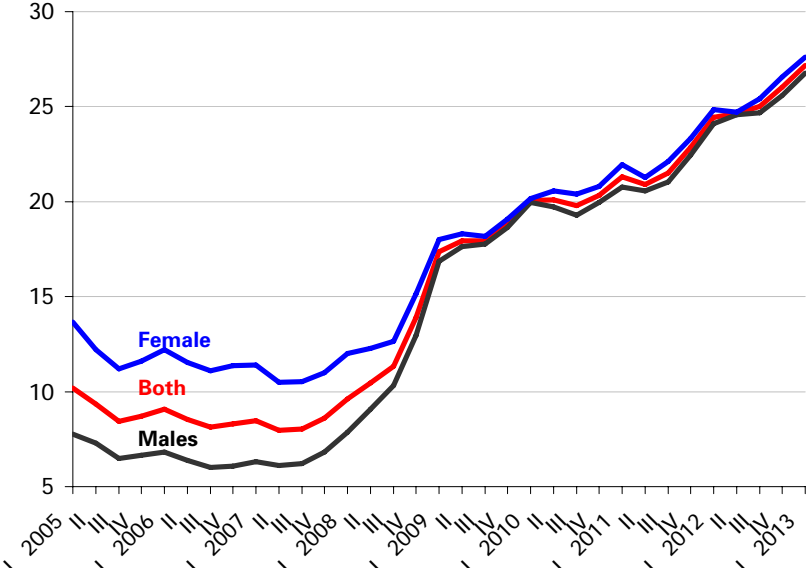
Unemployment



Activity rate



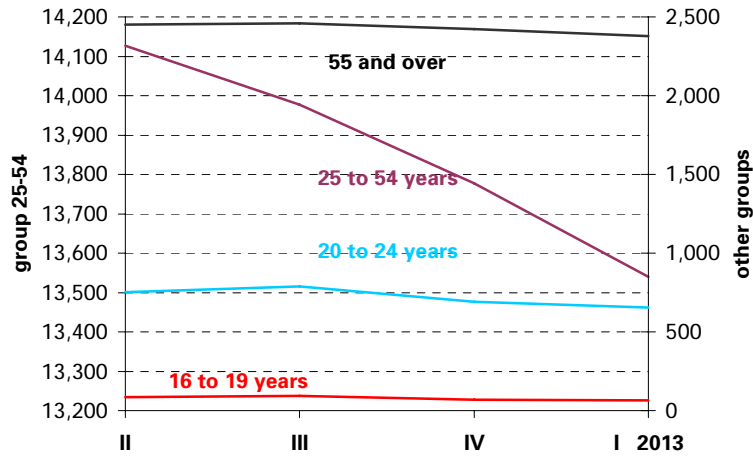
Unemployment rate



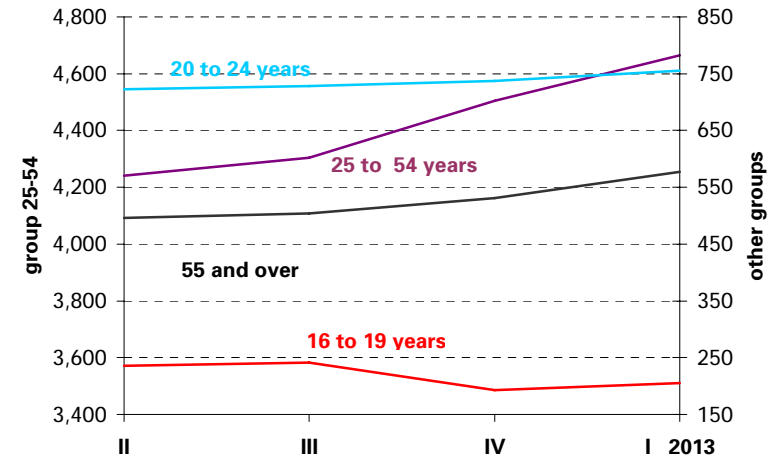
Employed and Unemployed by age

APS First Quarter 2013

Employment (thousands)

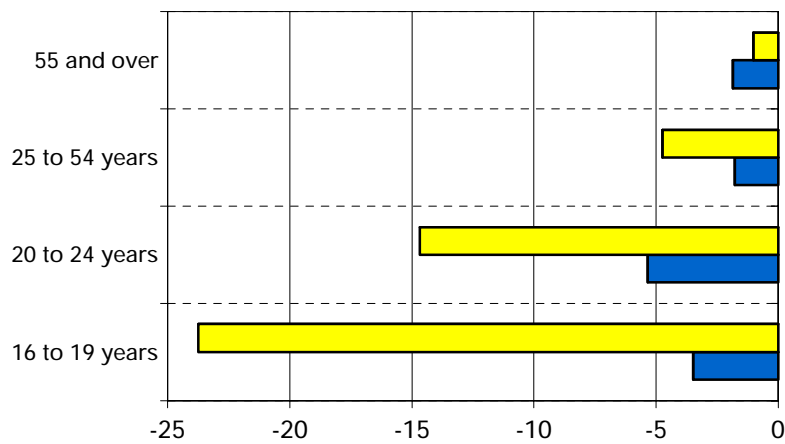


Unemployment (thousands)



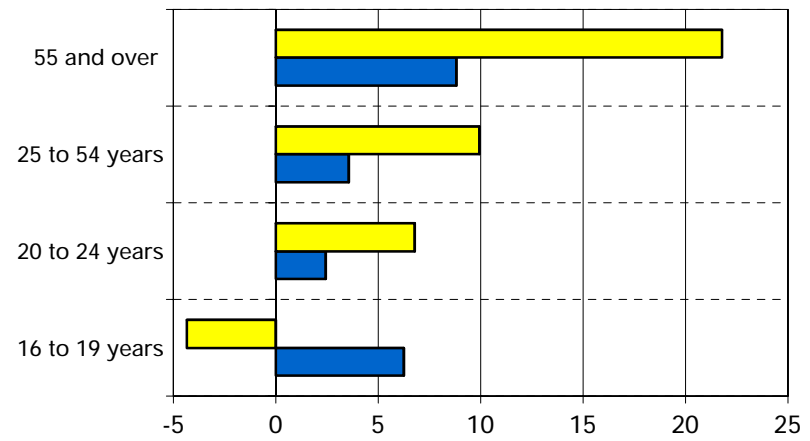
Variation percentages over the previous quarter and over the same quarter of the previous year

Employment



■ previous quarter ■ same quarter, previous year

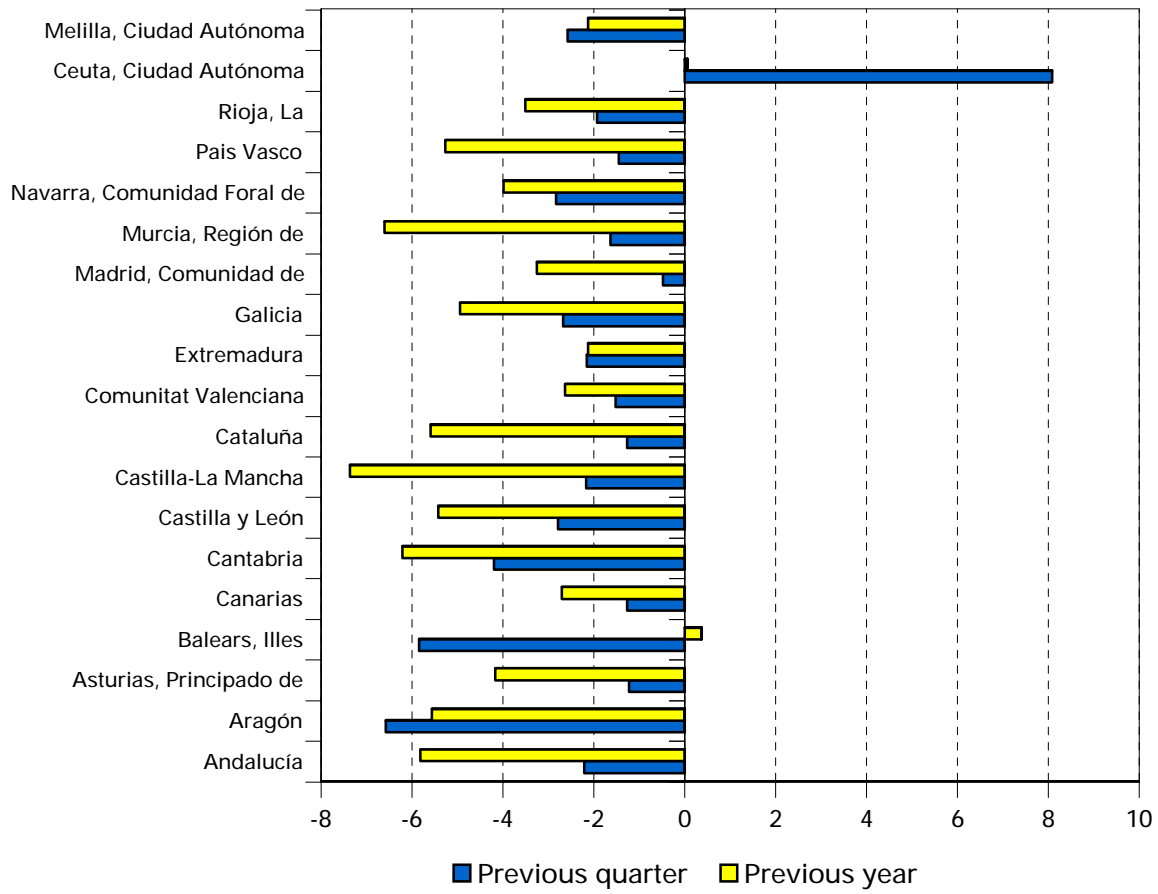
Unemployment



■ previous quarter ■ same quarter, previous year

Employment variation percentages over the previous quarter and over the same quarter of the previous year

First Quarter 2013



Unemployment rate (Spain = 27.16)

