

## **Economically Active Population Survey (EAPS) Second quarter of 2008**

### **Main results**

- The number of employed persons in the second quarter of 2008 stands at 20,425,100 (22,900 more than in the previous quarter). In the last year, unemployment increased by 57,800 persons. The interannual employment growth rate stands at 0.28%.
- The activity rate is 59.76%, 42 hundredths higher than in the first quarter of the year. For men, the rate is 69.64% (31 hundredths higher than the previous quarter), while the rate for women is 50.25% (52 hundredths higher, exceeding the 50% threshold for the first time).
- The number of unemployed persons increases by 207,400 persons as compared with the previous quarter, standing at 2,381,500. The unemployment rate increases 81 hundredths, reaching 10.44%. The number of unemployed persons has increased by 621,600 persons during the last 12 months.
- The total number of wage earners rises by 35,600 persons as compared with the previous quarter, and stands at 16,853,000. The number of wage earners has increased by 73,700 persons in the past year. Wage earners with a permanent contract increase by 153,400 persons this quarter, while temporary wage earners decrease by 117,800 persons. The temporary employment rate stands at 30.92%, that is, 76 hundredths below the rate from the previous quarter.
- The Autonomous Communities with the greatest increases in employment this quarter are Illes Balears (40,600), Cataluña (15,200), País Vasco (11,800), Asturias (10,900) and Galicia (10,800). The greatest decreases are recorded in Andalucía (43,600 fewer employed persons), Comunitat Valenciana (28,800) and Castilla y León (11,100).
- The greatest increases in the number of unemployed persons are observed in Andalucía (56,400), Comunitat Valenciana (52,200) and Madrid (50,800). The only considerable decrease in the number of unemployed persons this quarter is recorded in Illes Balears (10,300 fewer unemployed persons).
- **Since 2008, the EAPS has coded economic activity with the new NACE-2009 Activities Classification. During the four quarters of 2008, a double coding will be done of the activity, also incorporating the NACE 1993 code used in the survey up until the fourth quarter 2007, in order to enable comparisons with previous quarters. In the appendix to this press release, additional information can be consulted regarding the new classification.**

## **The number of active persons in Spain stands at 22,806,700 persons**

The total number of active persons for the first quarter of 2008 was 22,806,700, with an increase of 230,200 persons as compared with the previous quarter. The activity rate was 59.76%, that is, 42 hundredths more than in the previous quarter.

The number of active women increased by 130,500 persons this quarter, standing at 9,764,400. The female activity rate increased 52 hundredths, reaching 50.25%, exceeding the 50% threshold for the first time. On the other hand, the number of active men stood at 13,042,300, with an increase of 99,800. The male activity rate increased 31 hundredths this quarter, standing at 69.64%.

During the last 12 months, the number of active persons increased by 679,400 persons, of whom 425,500 were women.

The activity rate for the foreign population (76.71%) increased 12 points this quarter, while that for the Spanish population rose 41 hundredths to 57.44%. The difference between the two activity rates was more than 19 points. To a large extent, the age structure of the foreign nationals explained this difference.

## **Employment increases by 22,900 persons this quarter, to 20,425,100**

The number of employed persons stood at 20,425,100 persons, 22,900 more than in the first quarter of the year. In the last 12 months, the number of employed persons increased by 57,800.

The interannual employment growth rate was 0.28%, that is, 1.38 points lower than the previous quarter (1.66%).

Employment increased for women (87,400 more employed women than in the previous quarter), but for men there was a decrease of 64,500. In terms of interannual evolution, there were 206,100 more women employed; conversely, in the last 12 months there were 148,300 fewer men employed.

The number of employed Spaniards increased by 20,900 persons during the last three months, while the number of employed foreign nationals recorded practically no change. In the second quarter of 2008, 14.41% of the total number of employed persons were foreign nationals.

Increases in employment this quarter were recorded for the groups aged 40 and over, while for those aged 40 and under, a decrease was recorded in the number of employed persons, except for an increase of 8,300 among those aged 20-24, as a result of the increase in employment of women in that age group. The greatest increase in the number of employed persons was recorded among those aged over 55 and over (48,800), and the most pronounced decrease was among those aged 25-29 (32,400 fewer employed persons).

Regarding quarter-on-quarter evolution by sector<sup>1</sup> of activity, the number of those employed in agriculture decreased 41,800, standing at 880,900. Those employed in industry decreased by 68,400 persons, to a total of 3,273,200. In the construction sector, this second quarter of the year recorded a decrease in the number of employed persons of 122,400, with employment in the sector standing at 2,498,000. Lastly, the number of those employed in

---

<sup>1</sup> By NACE-1993 classification

services stood at 13,773,000, with an increase of 255,500 employed persons as compared with the previous quarter.

Regarding the interannual variation, there were 40,100 fewer persons employed in agriculture (representing a 4.35% decrease) and 215,700 fewer persons employed in construction (with a decrease of 7.95%). The number of employed persons increased in industry by 29,400 persons (0.91% more) and by 284,200 persons in services (with an increase of 2.11%).

### **The number of wage earners with permanent contracts increases by 153,400 persons**

The total number of wage earners in the second quarter of 2008 was 16,853,000, indicating an increase of 35,600 as compared with the previous quarter. The number of wage earners with a permanent contract rose by 153,400, standing at 11,900,500 persons. Wage earners with a temporary contract decreased by 117,800 persons, to a total of 4,952,500.

The temporary employment rate stood at 29.39%, 76 hundredths less than the rate for the previous quarter (30.15%).

In the last 12 months, the total number of wage earners increased by 73,700 persons. Wage earners with a permanent contract increased by 465,000 persons, while wage earners with a temporary contract decreased by 391,400 persons.

The salary rate rose 8 hundredths, standing at 82.51%.

Regarding the **working day**, during this quarter, 2,449,200 part-time employed persons were registered (1,954,900 women and 494,300 men), practically the same magnitudes as the previous quarter.

On the other hand, full-time employed persons increased by 23,500 as compared with the previous quarter. The number of women working full time rose by 88,500 persons, and the number of men rose by 65,000.

The percentage of part-time employed persons was 11.99%, practically the same as the 12.01% registered the previous quarter.

### **Unemployment increases by 207,400 persons, and the unemployment rate stands at 10.44%**

Unemployment in the second quarter of 2008 increased by 207,400 persons. The total number of unemployed persons in Spain was 2,381,500, with an increase of 612,600 persons during the last 12 months.

The unemployment rate increased 81 hundredths and reached 10.44%.

Unemployment increased more for men (164,300) than for women (43,100). The male unemployment rate was 9.07%, that is, 1.2 points higher than the rate recorded the first quarter of 2008. The rate for women increased 28 hundredths, standing at 12.28%. In recent quarters, the two rates have progressively converged.

Unemployment grew by 132,000 persons among Spaniards and by 75,300 persons among foreign nationals. The unemployment rate for Spaniards was 9.34% (62 hundredths higher than the previous quarter) while the rate for foreign nationals was 16.46% (1.82 points higher).

Unemployment increased for all age groups this quarter. The greatest increase in absolute value was among persons aged 25 to 54 years old, with 126,000 more unemployed persons.

As for the quarter-on-quarter evolution of unemployment by sector<sup>2</sup>, it rose in all of them: in construction by 87,100 persons, in the services sector by 39,700 persons, in industry by 19,500 persons and in agriculture by 7,000 persons. The number of unemployed persons who lost their jobs over one year ago increased by 29,400 persons. Unemployment increased by 24,700 persons among those seeking their first position of employment.

The unemployment rate for the household reference person rose 41 hundredths, standing at 7.86%. The rate for the spouse or partner increased 68 hundredths to 9.06%, and the rate for sons or daughters increased 1.51 points to 16.69%.

## **There is an increase of 41,300 in the number of households in which all of the active members are unemployed**

In the second quarter of 2008, the number of households in which all active members were employed stood at 10,554,100 persons, 49,500 fewer than in the previous quarter and 98,800 fewer than one year ago.

The number of households in which all active members were unemployed increased by 41,300 in comparison with the previous quarter, and by 174,200 in the last twelve months .

## **Mobility as related to activity**

Regarding quarter-on-quarter mobility as related to activity, the proportion of unemployed persons who had been employed three months prior was 29.01%, indicating a decrease of 56 hundredths over the rate for the first quarter of 2008.

The percentage of employed persons who had also been employed the previous quarter stood at 93.81%, a rate 45 hundredths lower than three months ago.

The percentage of employed persons who, in the first quarter had been unemployed was 3.24%, that is, 56 hundredths higher than the rate recorded the previous quarter. The percentage of employed persons who had been inactive was 2.95%, 11 hundredths lower than the first quarter of 2008.

The percentage of inactive persons who had been employed during the previous quarter decreased 37 hundredths to 4%.

The probability of remaining unemployed was 43.54%, indicating an increase of 91 hundredths over the first quarter of the year, while the probability of remaining inactive was 93.23%, with an increase of 22 hundredths over the rate from three months ago.

## **Results by Autonomous Community**

The greatest increases in the number of **active persons** this quarter were observed in Madrid (58,500), Illes Balears (30,400) and Comunitat Valenciana (23,400).

No appreciable decreases were registered in the number of active persons in any Community.

---

<sup>2</sup>According to the NACE-1993 classification of activities

As per **employment**, the Autonomous Communities with the greatest growth as compared with the previous quarter, in absolute values, were Illes Balears (40,600), Cataluña (15,200), País Vasco (11,800), Asturias (10,900) and Galicia (10,800).

The greatest drops in employed persons in the second quarter of 2008 were observed in Andalucía (43,600 fewer employed persons), Comunitat Valenciana (28,800) and Castilla y León (11,100).

In the past year, the highest employment increases were recorded in Cataluña (41,000), Asturias (26,600), Madrid (24,200), Comunitat Valenciana (23,900) and Castilla-La Mancha (19,800). In contrast, Andalucía and Canarias registered decreases in the last 12 months in the number of employed persons, of 55,200 and 52,400 persons, respectively.

As for the evolution of **unemployment**, the greatest increases this quarter were recorded in Andalucía (56,400), Comunitat Valenciana (52,200) and Madrid (50,800). The only appreciable decrease in unemployment this quarter was observed in Illes Balears (10,300 fewer unemployed persons).

In the last 12 months, the only Autonomous Communities that decreased in the number of unemployed persons were País Vasco (4,600 fewer unemployed persons) and Asturias (4,000).

In contrast, the highest increases in the number of unemployed persons in the last 12 months were observed in Andalucía (178,500 more), Madrid (92,100), Comunitat Valenciana (81,600), Canarias (65,900) and Cataluña (65,300).

País Vasco (5.57%), Navarra (5.62%), Aragón (6.78%), La Rioja (6.81%) and Cantabria (7.03%) were the Autonomous Communities with the lowest **unemployment rates** in the second quarter of 2008.

The highest unemployment rates were recorded in Andalucía (16.27%), Canarias (16%) and Extremadura (13.86%).

The lowest female unemployment rates were observed in Navarra (6.94%), País Vasco (7.19%), Cataluña (7.5%) and La Rioja (8.37%).

This quarter, Cataluña presented a female unemployment rate 22 hundredths lower than the male rate. Canarias, Illes Balears and Murcia had the least divergent unemployment rates by sex, with a difference smaller than two points. On the other hand, the Autonomous Communities with the most diverging female and male unemployment rates were Extremadura (more than 10 points' difference) and Castilla – La Mancha and Castilla y León, with a difference of over seven points each.

By province, Granada (18.44%), Cádiz (18.2%), Almería (17.57%), Las Palmas (17.12%), Málaga and Jaén (16.38%) and Córdoba (15.64%) had the highest unemployment rates this quarter.

The Autonomous Communities with the highest **activity rates** in the second quarter of 2008 were Illes Balears (65.62%), Madrid (64.69%), Cataluña (63.25%), Murcia (61.98%), Comunitat Valenciana (61.19%), Navarra (61.08%) and Canarias (60.78%).

The lowest activity rates this quarter were recorded in Asturias (52.77%), Extremadura (53.62%), Castilla y León (54.24%) and Galicia (54.87%).

By province, in addition to in Illes Balears, Madrid, Murcia and Navarra, activity rates above 60% were observed in Girona (64.95%), Castellón (64.52%), Tarragona (64.3%), Las Palmas (63.57%), Barcelona (63.16%), Almería (62.19%), Valencia (62.91%), Toledo

(61.4%), Burgos (61.29%), Valladolid (60.77%), Guipúzcoa (60.23%) and Zaragoza (60.19%).

---

For further information see **INEbase-[www.ine.es](http://www.ine.es)** All press releases at: **[www.ine.es/prensa/prensa.htm](http://www.ine.es/prensa/prensa.htm)**

**Press office:** Telephone numbers: 91 583 93 63 / 94 08 – Fax: 91 583 90 87 - **[gprensa@ine.es](mailto:gprensa@ine.es)**

**Information Area:** Telephone: 91 583 91 00 – Fax: 91 583 91 58 – **[www.ine.es/infoine](http://www.ine.es/infoine)**

---

## Methodological note

### General characteristics

The Economically Active Population Survey is a continuous sample-based study, aimed at family dwellings, and which has been conducted since 1964.

3,588 census sections are chosen for this survey, among the more than 30,000 into which Spain is divided. On average, 18 households are surveyed in each of them, except in Barcelona, Madrid, Sevilla, Valencia and Zaragoza, where the number of interviews is 22. Thus, the sample size is approximately 65,000 dwellings, providing information on some 180,000 persons. This data is collected through personal and telephone interviews, conducted by National Statistics Institute workers, attached to the provincial delegations thereof. The information is carefully filtered and processed using computer means. Results are obtained within the month after the end of the reference quarter for the data.

### Main definitions

**Active persons:** persons aged 16 or over who, during the reference week (the week prior to that when the interview is held), supplied labour for the production of economic goods and services or were available to do so, and carried out actions to incorporate themselves into said production. They are divided into employed and unemployed persons.

**Employed persons:** persons aged 16 or over who, during the reference week, worked for at least one hour, in exchange for payment (salary, wage, business benefit, etcetera) in cash or in kind. Persons who, having a job, have been temporarily absent from it due to illnesses, vacation, etcetera are also employed persons.

Employed persons are classified, considering their professional status, as non-wage earners (employers, businesspersons without employees, and independent workers, cooperative members, family assistance) and wage earners (public or private).

Considering the length of the working day, employed persons are classified as full-time and part-time employed persons. The usual working week cannot be shorter than 30 hours in the first case, nor exceed 35 hours in the second.

Wage earners are classified into permanent and temporary. For the latter, the end of their contract or work relationship is set by means of objective conditions, such as the expiration of a certain period of time, the completion of a specific task, etcetera.

A significant category within employment is that of **time-related underemployment**, defined in the 16th International Labour Statisticians Conference (Geneva, 1998). The EAPS considers persons suffering time-related underemployment as employed persons who would like to work more hours, who are available to work more hours and whose effective working hours in the reference week are less than the number of hours usually worked by employed persons working full-time in the same branch of activity as that in which the underemployed person carries out his/her main job.

**Unemployed persons:** individuals, aged 16 or over who, during the reference week, were jobless, available for work, and actively looking for a job. Persons who might have already found a job and are waiting to start, are also considered as unemployed, provided that they verify the first two conditions.

According to European Commission Regulation 1897/2000, the following are considered as active search methods in the four weeks prior to the interview:

- Being in contact with a public employment office for the purpose of finding work, whatever part they play in the initiative (the renewal of registration due to purely administrative reasons does not constitute active planning).
- Being in contact with a private office (temporary employment office, specialised contracting company, ...) with the objective of finding work.
- Having sent an application directly to employers.
- Having searched via personal relations and trade unions, ....
- Having advertised oneself or responded to newspaper advertisements.
- Having studied employment offers.
- Having taken part in a test, public exam or interview in the framework of a contracting procedure.
- Having looked for land, premises or material.
- Having taken steps to obtain permits, licences or financial resources.

**Inactive persons:** individuals aged 16 or over not included in any of the above categories.



## Annex

### **Note on the use of the new National Classification of Economic Activities NACE-2009 in the coding of the Economically Active Population Survey (EAPS) since the first quarter of 2008**

Adaptation to the European Union new classification of economic activities has led to a new coding of the variables for the Economically Active Population Survey relating to the branch of activity as of the first quarter of 2008.

The variables affected by this new coding are as follows:

- Activity of the main job of employed persons
- Activity of the second job (employed persons with more than one job)
- Activity in the last job (unemployed and inactive persons who left their last job less than one year ago)

This implies that several branches of activity have become part of different sectors. Thus, to quote a few examples, the "Maintenance of gardens" branch of activity, which was until now classified as part of the agricultural sector, has now become a part of the services sector. The "Development and selling of real estate" branch has gone from the services sector to the construction sector. "Collection and treatment of waste water" has gone from the services sector to industry, and conversely, "Publishing" has gone from industry to services.

In the following link on the INE website, complete information is available regarding all the changes arising from the new coding of branches of activity:

[http://www.ine.es/daco/daco42/clasificaciones/rev.1/correspondencia\\_cnae.pdf](http://www.ine.es/daco/daco42/clasificaciones/rev.1/correspondencia_cnae.pdf)

### **Origin of the new coding**

The current classification of economic activities for statistical purposes within the European Union, known as NACE Rev. 2, was approved by Council and Parliament Regulation No.1893/2006, of 20 December. In order to ensure harmonised implementation of the classification in all Member States, **European Commission Regulation No.973/2007 of 20 August was approved; this stipulated the use of the aforementioned Classification in the Community Labour Force Survey (taken in Spain from the Economically Active Population Survey) beginning in the year 2008.**

The Member States, in order to be able to adapt the European classification to their reality, have compiled national versions which must be compatible with the NACE Rev. 2. The National Classification of Economic Activities NACE-2009, approved in Royal Decree 475/2007 of 13 April 2007 (Official Spanish Gazette of 28 April 2007), is the national version of NACE Rev. 2 in Spain.

Therefore, the variables for the Economically Active Population Survey relating to the branch of activity are now coded in accordance with the new NACE-2009.

### **Information link**

In order to provide sufficient information to link the old classification to the new one, the INE will carry out dual activity coding over the four quarters of 2008, in order to be able to continue as of 2009 solely with the new classification.

In this way, tables by economic activity may only be calculated in accordance with both classifications and have a link year between the two. On the INE website (specifically, in the INEbase database) results will be published from the old and new classifications for the four quarters of 2008.

Similarly, in the EAPS press releases in which information appears by economic sector, both classifications will also be used throughout this year.

For the moment, the distribution by sector of employed persons, in accordance with the NACE 1993, is of a provisional nature.

## Economically Active Population Survey Second Quarter 2008

### National results

(Continues)

	Current quarter	Variation on previous quarter		Variation on same quarter, previous year	
		Difference	Percentage	Difference	Percentage
<b>1. Population aged 16 years and over by sex and labour status</b>					
BOTH SEXES					
<b>Population aged 16 years and over</b>	38.161,5	118,8	0,31	569,6	1,52
Active population	22.806,7	230,2	1,02	679,4	3,07
- Employed	20.425,1	22,9	0,11	57,8	0,28
- Unemployed	2.381,5	207,4	9,54	621,6	35,32
Inactive	15.354,8	-111,4	-0,72	-109,8	-0,71
Activity rate	59,76	0,42	-	0,90	-
Unemployment rate	10,44	0,81	-	2,49	-
<b>Population aged 16 to 64 years</b>	30.760,4	90,3	0,29	458,7	1,51
Activity rate (16-64)	73,63	0,51	-	1,05	-
Unemployment rate (16-64)	10,49	0,81	-	2,50	-
Employment rate (16-64)	65,90	-0,13	-	-0,87	-
MALES					
<b>Population aged 16 years and over</b>	18.729,5	59,2	0,32	283,0	1,53
Active population	13.042,3	99,8	0,77	254,0	1,99
- Employed	11.859,4	-64,5	-0,54	-148,3	-1,24
- Unemployed	1.182,9	164,3	16,13	402,3	51,53
Inactive	5.687,2	-40,6	-0,71	29,0	0,51
Activity rate	69,64	0,31	-	0,31	-
Unemployment rate	9,07	1,20	-	2,97	-
<b>Population aged 16 to 64 years</b>	15.565,5	45,9	0,30	231,1	1,51
Activity rate (16-64)	83,13	0,36	-	0,35	-
Unemployment rate (16-64)	9,12	1,20	-	2,98	-
Employment rate (16-64)	75,55	-0,66	-	-2,15	-
FEMALES					
<b>Population aged 16 years and over</b>	19.432,0	59,6	0,31	286,6	1,50
Active population	9.764,4	130,5	1,35	425,5	4,56
- Employed	8.565,8	87,4	1,03	206,1	2,47
- Unemployed	1.198,6	43,1	3,73	219,3	22,39
Inactive	9.667,6	-70,8	-0,73	-138,9	-1,42
Activity rate	50,25	0,52	-	1,47	-
Unemployment rate	12,28	0,28	-	1,79	-
<b>Population aged 16 to 64 years</b>	15.194,9	44,5	0,29	227,5	1,52
Activity rate (16-64)	63,89	0,66	-	1,78	-
Unemployment rate (16-64)	12,32	0,28	-	1,80	-
Employment rate (16-64)	56,02	0,41	-	0,44	-

### 2. Spanish population<sup>1</sup> aged 16 years and over by labour status

SPANISH POPULATION AGED 16 YEARS AND OVER	33.569,1	25,1	0,07	95,3	0,28
Active population	19.283,6	153,0	0,80	284,6	1,50
- Employed	17.482,1	20,9	0,12	-131,4	-0,75
- Unemployed	1.801,5	132,0	7,91	416,1	30,03
Inactive	14.285,4	-127,9	-0,89	-189,3	-1,31
Activity rate	57,44	0,41	-	0,69	-
Unemployment rate	9,34	0,62	-	2,05	-

<sup>1</sup> including dual nationality

**National results**

(Continuation)

	Current quarter	Variation on previous quarter		Variation on same quarter, previous year	
		Difference	Percentage	Difference	Percentage
<b>3. Foreign population aged 16 years and over by labour status</b>					
FOREIGN POPULATION AGED 16 YEARS AND OVER	4.592,4	93,7	2,08	474,3	11,52
Active population	3.523,1	77,3	2,24	394,8	12,62
- Employed	2.943,1	1,9	0,07	189,3	6,87
- Unemployed	580,0	75,3	14,92	205,5	54,87
Inactive	1.069,4	16,5	1,56	79,5	8,03
Activity rate	76,71	0,12	-	0,75	-
Unemployment rate	16,46	1,82	-	4,49	-
<b>4. Employed by sex, age group and economic sector</b>					
BOTH SEXES	20.425,1	22,9	0,11	57,8	0,28
16 to 19 years	318,4	-29,4	-8,45	-77,7	-19,62
20 to 24 years	1.510,4	8,3	0,55	-81,9	-5,14
25 to 29 years	2.740,9	-32,4	-1,17	-142,5	-4,94
30 to 34 years	3.222,6	-22,4	-0,69	34,2	1,07
35 to 39 years	3.000,3	-14,4	-0,48	36,2	1,22
40 to 44 years	2.793,1	12,3	0,44	18,5	0,67
45 to 49 years	2.488,8	26,0	1,06	70,1	2,90
50 to 54 years	1.963,9	25,9	1,34	79,4	4,21
55 and over	2.386,5	48,8	2,09	121,6	5,37
MALES	11.859,4	-64,5	-0,54	-148,3	-1,24
16 to 19 years	200,1	-20,6	-9,33	-58,0	-22,47
20 to 24 years	828,3	-9,5	-1,13	-73,1	-8,11
25 to 29 years	1.478,8	-31,9	-2,11	-121,0	-7,56
30 to 34 years	1.828,8	-31,0	-1,67	-1,4	-0,08
35 to 39 years	1.747,2	-10,9	-0,62	-0,9	-0,05
40 to 44 years	1.616,6	-8,2	-0,50	3,5	0,22
45 to 49 years	1.432,4	11,6	0,82	14,0	0,98
50 to 54 years	1.178,9	11,3	0,97	20,5	1,77
55 and over	1.548,4	24,6	1,61	68,1	4,60
FEMALES	8.565,8	87,4	1,03	206,1	2,47
16 to 19 years	118,4	-8,8	-6,93	-19,8	-14,31
20 to 24 years	682,1	17,8	2,68	-8,8	-1,28
25 to 29 years	1.262,1	-0,5	-0,04	-21,6	-1,68
30 to 34 years	1.393,8	8,6	0,62	35,7	2,63
35 to 39 years	1.253,2	-3,5	-0,28	37,1	3,05
40 to 44 years	1.176,5	20,5	1,77	15,1	1,30
45 to 49 years	1.056,4	14,5	1,39	56,1	5,61
50 to 54 years	785,0	14,6	1,90	58,9	8,11
55 and over	838,2	24,3	2,98	53,5	6,82
TOTAL EMPLOYED	20.425,1	22,9	0,11	57,8	0,28
Agriculture NACE rev1	880,9	-41,8	-4,53	-40,1	-4,35
Industry NACE rev1	3.273,2	-68,4	-2,05	29,4	0,91
Construction NACE rev1	2.498,0	-122,4	-4,67	-215,7	-7,95
Services NACE rev1	13.773,0	255,5	1,89	284,2	2,11
TOTAL EMPLOYED	20.425,1	22,9	0,11	57,8	0,28
Agriculture NACE rev2	820,8	-42,9	-4,97		
Industry NACE rev2	3.244,3	-69,1	-2,09		
Construction NACE rev2	2.549,5	-120,8	-4,53		
Services NACE rev2	13.810,6	255,7	1,89		

## National results

(Continuation)

	Current quarter	Variation on previous quarter		Variation on same quarter, previous year	
		Difference	Percentage	Difference	Percentage

### 5. Employed by professional status, type of contract and working hours

TOTAL EMPLOYED	20.425,1	22,9	0,11	57,8	0,28
Self-employed workers	3.562,0	-12,7	-0,36	-16,7	-0,47
- Employers	1.175,4	35,9	3,15	65,7	5,92
- Independent workers	2.124,5	-22,3	-1,04	-36,9	-1,71
- Cooperatives members	63,9	-7,6	-10,67	-20,9	-24,68
- Family workers	198,2	-18,7	-8,63	-24,6	-11,04
Employees	16.853,0	35,6	0,21	73,7	0,44
- With a permanent job	11.900,5	153,4	1,31	465,0	4,07
- With a temporary job	4.952,5	-117,8	-2,32	-391,4	-7,32
Others	10,1	0,0	0,22	0,8	9,16
FULL-TIME EMPLOYED	17.975,9	23,5	0,13	48,7	0,27
Males	11.365,1	-65,0	-0,57	-127,5	-1,11
Females	6.610,8	88,5	1,36	176,3	2,74
PART-TIME EMPLOYED	2.449,2	-0,6	-0,03	9,1	0,37
Males	494,3	0,4	0,09	-20,8	-4,03
Females	1.954,9	-1,1	-0,06	29,9	1,55

### 6. Unemployed by sex, age group, and economic sector

BOTH SEXES	2.381,5	207,4	9,54	621,6	35,32
16 to 19 years	222,5	52,0	30,53	59,7	36,64
20 to 24 years	351,5	21,9	6,64	72,1	25,79
25 to 54 years	1.643,0	126,0	8,31	454,5	38,24
55 and over	164,6	7,4	4,70	35,3	27,35
MALES	1.182,9	164,3	16,13	402,3	51,53
16 to 19 years	109,5	20,5	23,06	26,8	32,38
20 to 24 years	184,5	17,7	10,61	59,4	47,52
25 to 54 years	792,7	114,4	16,86	290,9	57,99
55 and over	96,2	11,7	13,81	25,1	35,29
FEMALES	1.198,6	43,1	3,73	219,3	22,39
16 to 19 years	113,0	31,5	38,69	32,9	41,04
20 to 24 years	166,9	4,2	2,57	12,6	8,18
25 to 54 years	850,4	11,6	1,39	163,6	23,82
55 and over	68,4	-4,3	-5,91	10,2	17,64
TOTAL UNEMPLOYED	2.381,5	207,4	9,54	621,6	35,32
Agriculture NACE rev1	125,0	7,0	5,93	37,0	42,09
Industry NACE rev1	185,0	19,5	11,78	62,9	51,49
Construction NACE rev1	375,7	87,1	30,17	211,6	128,98
Services NACE rev1	886,8	39,7	4,68	208,7	30,79
Lost their job more than 1 year ago	586,6	29,4	5,28	90,1	18,15
First job seekers	222,5	24,7	12,48	11,2	5,29
TOTAL UNEMPLOYED	2.381,5	207,4	9,54	621,6	35,32
Agriculture NACE rev2	120,9	6,7	5,86		
Industry NACE rev2	183,4	16,8	10,06		
Construction NACE rev2	378,9	84,8	28,82		
Services NACE rev2	889,3	45,1	5,34		
Lost their job more than 1 year ago	586,6	29,4	5,28	90,1	18,15
First job seekers	222,5	24,7	12,48	11,2	5,29

## National results

(Conclusion)

	Current quarter	Variation on previous quarter		Variation on same quarter, previous year	
		Difference	Percentage	Difference	Percentage
<b>7. Unemployment rate by relationship with the reference person</b>					
TOTAL	10,44	0,81	-	2,49	-
Reference person	7,86	0,41	-	2,01	-
Spouse or partner	9,06	0,68	-	1,97	-
Child	16,69	1,51	-	4,17	-
Other relatives	16,19	2,26	-	4,83	-
Unrelated persons	11,63	2,02	-	1,85	-

## 8. Household data

TOTAL HOUSEHOLDS	16.694,7	122,4	0,74	464,1	2,86
Households with at least one active member	12.640,3	125,3	1,00	409,3	3,35
- All member employed	10.554,1	-49,5	-0,47	-98,8	-0,93
- All member unemployed	553,9	41,3	8,07	174,2	45,89
Households without any active population	4.054,4	-2,9	-0,07	54,9	1,37

## Mobility according to activity in current and previous quarter

Classification in previous quarter	Classification in current quarter			
	Total	Employed	Unemployed	Inactive
<b>BOTH SEXES</b>				
Total	100,00	100,00	100,00	100,00
Employed	53,40	93,81	29,01	4,00
Unemployed	5,43	3,24	43,54	2,77
Inactive	41,17	2,95	27,45	93,23
<b>MALES</b>				
Total	100,00	100,00	100,00	100,00
Employed	63,78	95,20	36,28	4,39
Unemployed	5,13	2,80	43,42	2,62
Inactive	31,09	2,00	20,30	92,99
<b>FEMALES</b>				
Total	100,00	100,00	100,00	100,00
Employed	43,52	91,90	22,21	3,77
Unemployed	5,72	3,84	43,65	2,85
Inactive	50,76	4,26	34,13	93,38

Grossing up factors of current quarter (forward analysis)

## Results by Autonomous Communities

(Continues)

	Current quarter	Variation on previous quarter		Variation on same quarter, previous year	
		Difference	Percentage	Difference	Percentage
<b>1. Population aged 16 years and over</b>					
TOTAL	38.161,5	118,8	0,31	569,6	1,52
Andalucía	6.649,8	24,5	0,37	100,2	1,53
Aragón	1.109,5	3,4	0,31	15,5	1,41
Asturias (Principado de)	936,4	-0,3	-0,04	-0,7	-0,08
Balears (Illes)	873,9	5,8	0,67	24,3	2,86
Canarias	1.707,9	9,2	0,54	37,6	2,25
Cantabria	492,7	1,1	0,23	4,6	0,94
Castilla y León	2.163,8	1,6	0,08	11,1	0,51
Castilla-La Mancha	1.665,7	10,0	0,60	42,0	2,59
Cataluña	6.075,6	8,2	0,13	75,1	1,25
Comunitat Valenciana	4.135,8	22,9	0,56	100,4	2,49
Extremadura	902,0	0,7	0,08	4,9	0,54
Galicia	2.387,4	1,0	0,04	7,7	0,33
Madrid (Comunidad de)	5.186,9	22,1	0,43	100,4	1,97
Murcia (Región de)	1.160,1	7,7	0,67	31,3	2,77
Navarra (Comunidad Foral de)	506,5	1,5	0,30	7,1	1,43
País Vasco	1.833,3	-1,3	-0,07	3,4	0,19
Rioja (La)	265,2	0,7	0,26	3,2	1,23
Ceuta	56,7	0,2	0,34	0,5	0,87
Melilla	52,3	-0,2	-0,34	1,0	2,03

## 2. Active population

TOTAL	22.806,7	230,2	1,02	679,4	3,07
Andalucía	3.798,4	12,8	0,34	123,4	3,36
Aragón	659,8	8,5	1,30	12,0	1,85
Asturias (Principado de)	494,1	8,4	1,72	22,6	4,78
Balears (Illes)	573,5	30,4	5,59	17,8	3,20
Canarias	1.038,1	5,9	0,57	13,5	1,31
Cantabria	279,7	0,0	-0,01	6,0	2,21
Castilla y León	1.173,7	2,3	0,20	23,8	2,07
Castilla-La Mancha	955,0	18,7	2,00	48,9	5,39
Cataluña	3.842,6	17,3	0,45	106,2	2,84
Comunitat Valenciana	2.530,8	23,4	0,93	105,6	4,35
Extremadura	483,7	7,4	1,56	13,9	2,97
Galicia	1.309,9	11,6	0,89	15,7	1,22
Madrid (Comunidad de)	3.355,3	58,5	1,77	116,3	3,59
Murcia (Región de)	719,1	11,0	1,56	35,1	5,13
Navarra (Comunidad Foral de)	309,4	-0,7	-0,21	3,3	1,09
País Vasco	1.064,8	11,9	1,13	6,5	0,61
Rioja (La)	158,8	1,7	1,07	4,8	3,09
Ceuta	31,7	1,3	4,40	3,4	11,98
Melilla	28,4	-0,2	-0,81	0,8	2,84

\* Data below 5000 are subject to strong variations, due to sampling error

## Results by Autonomous Communities

(Conclusion)

	Current quarter	Variation on previous quarter		Variation on same quarter, previous year	
		Difference	Percentage	Difference	Percentage
<b>3. Employed</b>					
TOTAL	20.425,1	22,9	0,11	57,8	0,28
Andalucía	3.180,4	-43,6	-1,35	-55,2	-1,70
Aragón	615,1	2,8	0,45	1,6	0,26
Asturias (Principado de)	455,3	10,9	2,44	26,6	6,20
Balears (Illes)	525,4	40,6	8,38	0,3	0,05
Canarias	872,0	-8,5	-0,96	-52,4	-5,67
Cantabria	260,0	-1,8	-0,70	3,7	1,45
Castilla y León	1.064,7	-11,1	-1,03	-1,5	-0,14
Castilla-La Mancha	854,9	8,2	0,97	19,8	2,38
Cataluña	3.549,7	15,2	0,43	41,0	1,17
Comunitat Valenciana	2.237,6	-28,8	-1,27	23,9	1,08
Extremadura	416,7	8,9	2,19	4,0	0,97
Galicia	1.200,8	10,8	0,91	4,6	0,38
Madrid (Comunidad de)	3.060,8	7,8	0,25	24,2	0,80
Murcia (Región de)	637,6	-3,1	-0,48	-1,4	-0,22
Navarra (Comunidad Foral de)	292,0	0,7	0,24	2,1	0,71
País Vasco	1.005,5	11,8	1,19	11,0	1,11
Rioja (La)	148,0	0,7	0,47	1,6	1,06
Ceuta	25,7	0,5	2,03	2,8	12,44
Melilla	23,0	0,9	3,94	1,2	5,42

## 4. Unemployed

TOTAL	2.381,5	207,4	9,54	621,6	35,32
Andalucía	618,0	56,4	10,05	178,5	40,61
Aragón	44,7	5,7	14,69	10,4	30,18
Asturias (Principado de)	38,7	-2,5	-6,08	-4,0	-9,45
Balears (Illes)	48,1	-10,3	-17,58	17,5	57,27
Canarias	166,1	14,4	9,47	65,9	65,79
Cantabria	19,7	1,8	10,14	2,3	13,36
Castilla y León	109,0	13,4	14,05	25,3	30,18
Castilla-La Mancha	100,1	10,4	11,66	29,0	40,83
Cataluña	292,9	2,1	0,72	65,3	28,66
Comunitat Valenciana	293,2	52,2	21,66	81,6	38,58
Extremadura	67,0	-1,5	-2,20	9,9	17,43
Galicia	109,1	0,7	0,69	11,2	11,41
Madrid (Comunidad de)	294,5	50,8	20,82	92,1	45,52
Murcia (Región de)	81,5	14,1	20,99	36,5	81,22
Navarra (Comunidad Foral de)	17,4	-1,4	-7,24	1,3	8,00
País Vasco	59,3	0,1	0,17	-4,6	-7,15
Rioja (La)	10,8	1,0	10,12	3,2	42,04
Ceuta	5,9	0,8	16,11	0,5	10,05
Melilla	5,4	-1,1	-16,97	-0,4	-6,85

\* Data below 5,000 are subject to strong variations, due to sampling error

(: ) The variation percentages calculated from low figures with high sampling errors are not significant

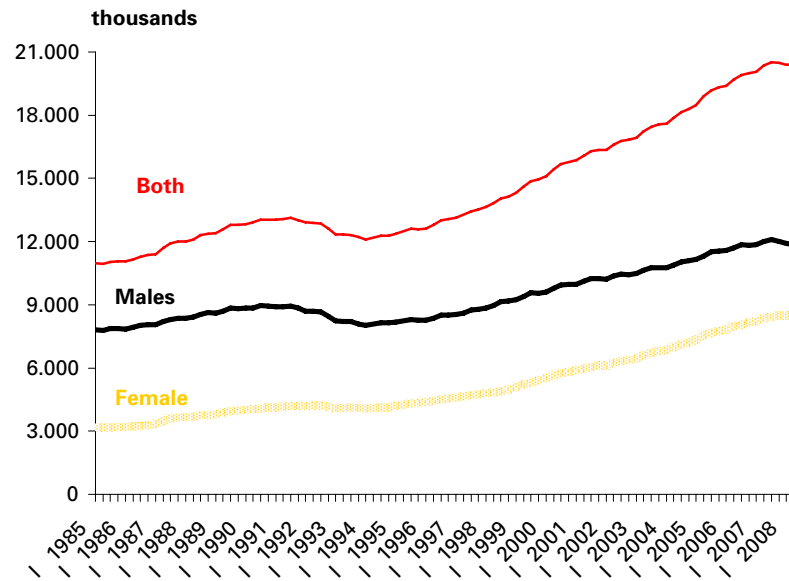




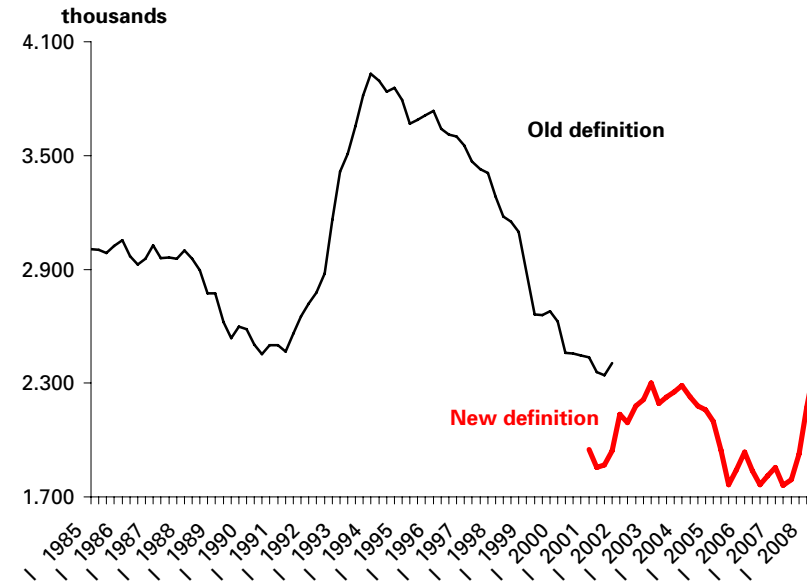
# Employed and unemployed by sex

APS Second Quarter 2008

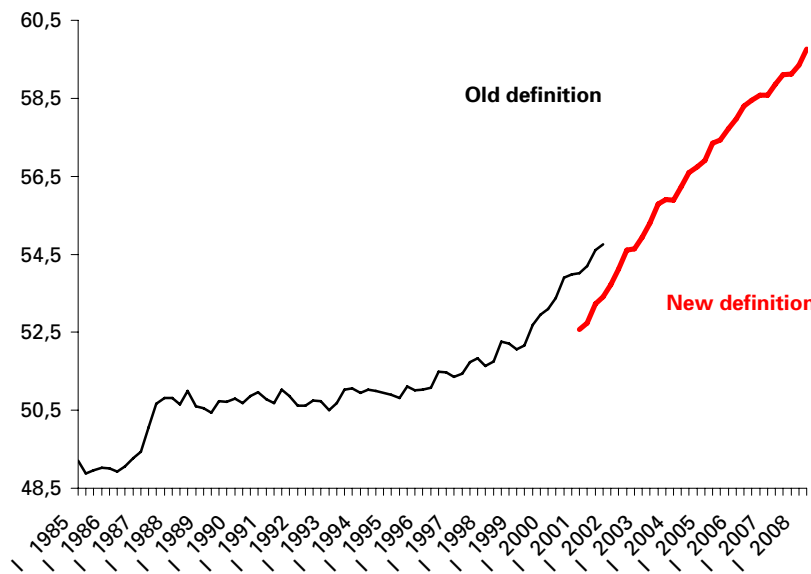
## Employed



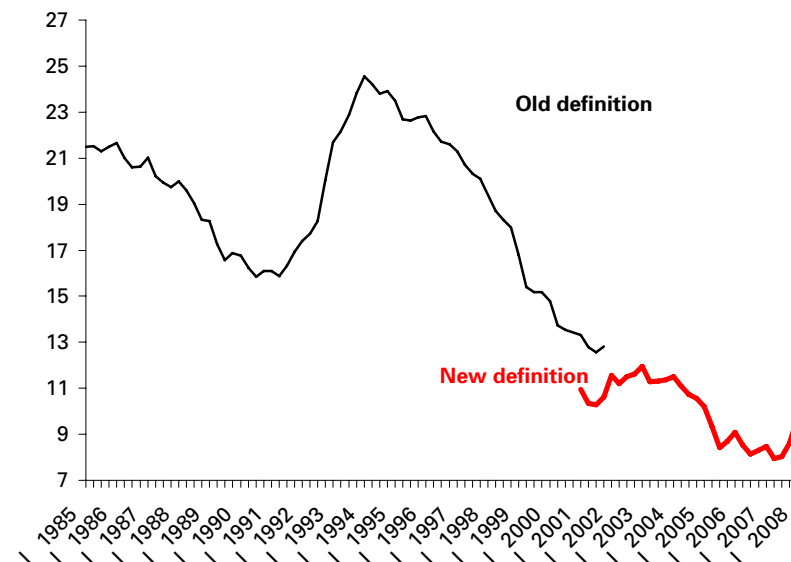
## Unemployed



## Activity rate



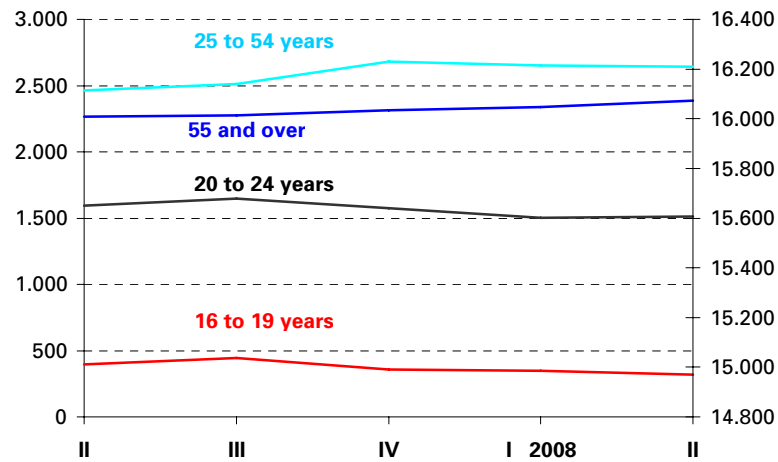
## Unemployment rate



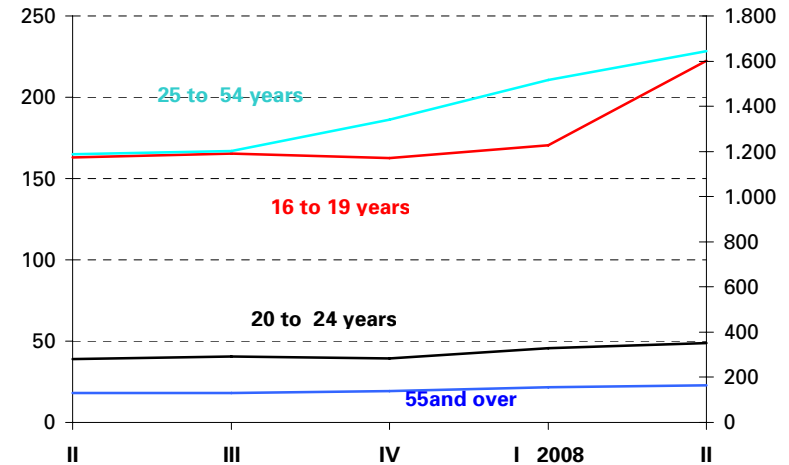
# Employed and Unemployed by age

APS Second Quarter 2008

## Employed

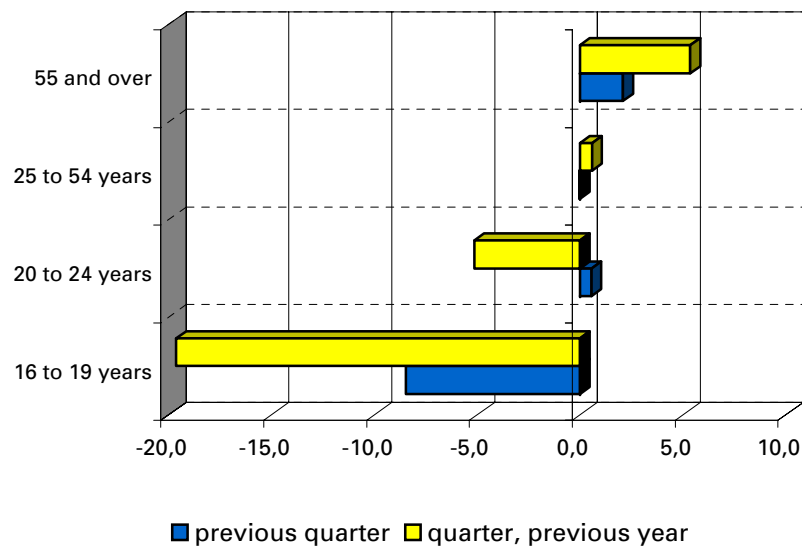


## Unemployment



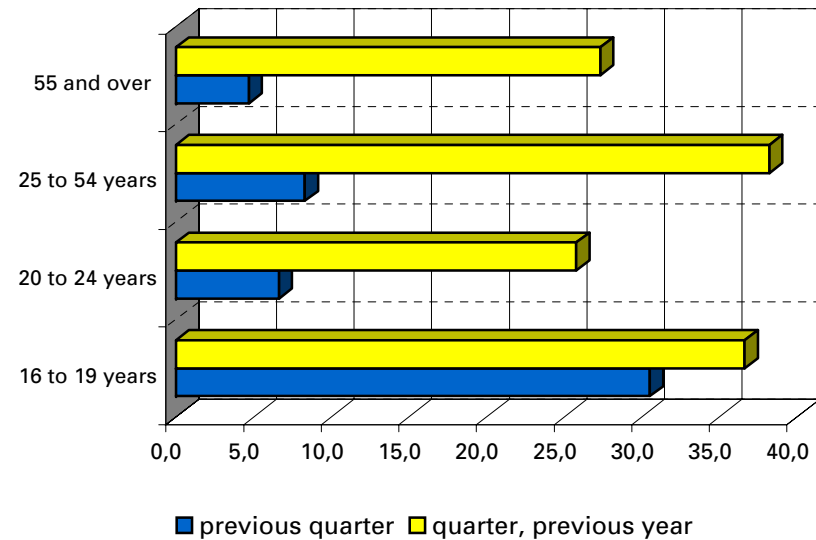
## Job variation percentages over the previous quarter and on the same quarter the previous year

### Employed



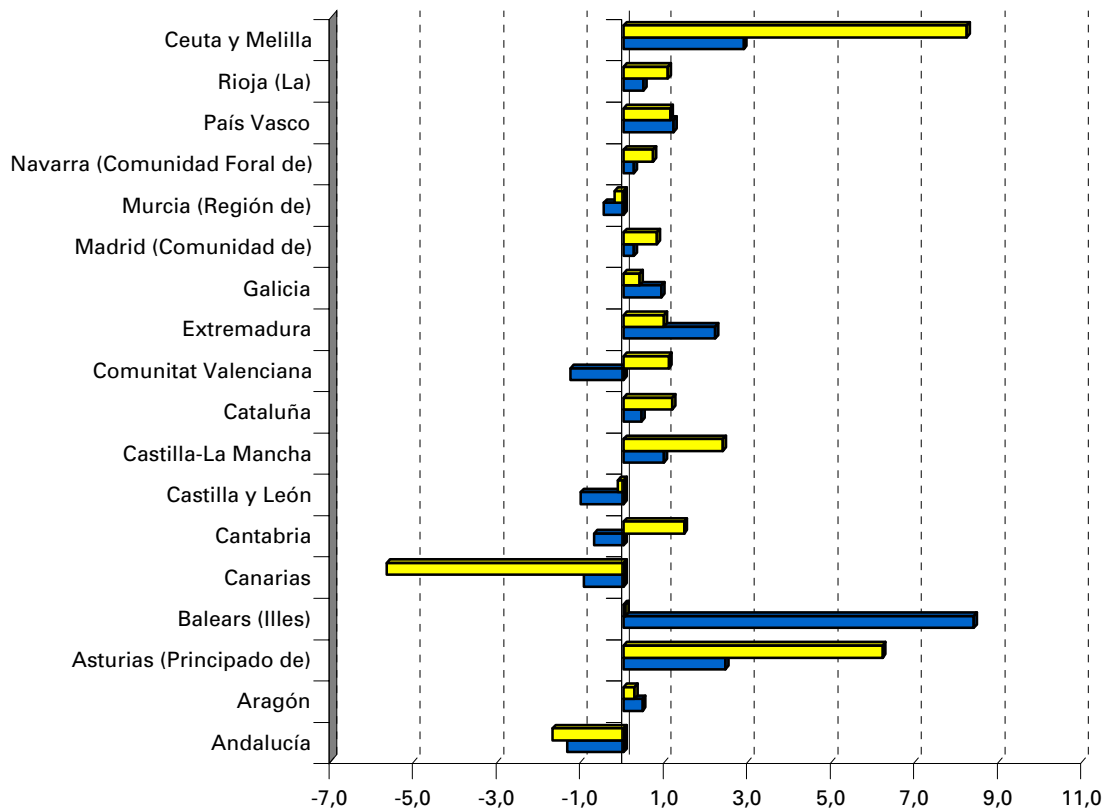
## Job variation percentages over the previous quarter and on the same quarter the previous year

### Unemployment



# Employment variation percentages over the previous quarter and on the same quarter the previous year

Second Quarter 2008



■ Previous quarter ■ Previous year

## Unemployment rate (Spain = 10,44 )

