

30 July 2010

Economically Active Population Survey (EAPS) Second quarter of 2010

Main Results

- The number of employed persons increases by 82,700 in the second quarter of 2010, as compared with the previous quarter, standing at 18,476,900. In the last year, employment has decreased by 468,100 persons. The interannual employment variation rate stands at -2.47% .
- The activity rate is 60.11%, which is 27 hundredths more than in the first quarter of the year. For males, the rate is 68.37% (42 hundredths above that of the previous quarter) and for females, 52.19% (14 hundredths higher).
- The increase in employment has not been able to absorb all the new active persons, therefore unemployment increased by 32,800 persons as compared with the previous quarter, standing at 4,645,500. The salary rate rose four hundredths, standing at 20.09%. The number of unemployed persons has increased by 508,000 during the last 12 months.
- The total number of wage earners increases by 110,200 as compared with the previous quarter, standing at 15,363,400. The number of wage earners with a temporary contract increases by 101,600, accounting for 24.88% of the total number of workers employed by others, whereas wage earners with a permanent contract increase by 8,600. The number of wage earners has decreased by 373,400 persons in the last year. Of these, 149,400 have a temporary contract.
- The number of employed persons increases as compared with the previous quarter in Illes Balears (43,600 more), Cataluña (42,700) and País Vasco (17,000). The greatest decreases in employment in the second quarter are in Canarias (27,900 fewer), Comunitat Valenciana (24,400) and Andalucía (21,000).
- The greatest reduction in unemployment this quarter is in Región de Murcia (13,900 fewer unemployed persons), Aragón (8,000) and Illes Balears (6,700). The greatest increases in unemployment were observed in Andalucía (23,200 more unemployed), Comunitat Valenciana (18,600) and Canarias (16,100).

The number of economically active persons increases by 115,500, standing at 23,122,300

The increase in the number of active persons that commenced in the first three months of 2010 continued in the second quarter, with an increase of 115,500 persons, reaching a total of 23,122,300. Similar quarterly increases had not been seen since the end of 2008. The rate of activity was 60.11%, that is, 27 hundredths more than in the previous quarter.

The number of economically active women increased by 37,200 persons this quarter, standing at 10,250,500. The female activity rate increased 14 hundredths, reaching 52.19%. On the other hand, the number of active men stood at 12,871,900, with an increase of 78,300. The male activity rate increased 42 hundredths this quarter, standing at 68.37%.

In the last 12 months, the number of active persons has increased by 39,900. There was an increase of 158,000 among women, whereas economically active men decreased by 118,100.

The rate of activity of the foreign population (76.91%) fell 37 hundredths during the quarter, whereas that of the Spanish population rose by the same amount, reaching 57.74%. The difference between the two rates was more than 19 points. To a large extent, the age structure of the foreign nationals explained this difference.

Employment increased by 82,700 persons this quarter, reaching 18,476,900

The number of occupied persons stood at 18,476,900, that is, 82,700 more than in the their first quarter of 2010. In the last 12 months, the number of employed persons decreased by 468,100.

The interannual employment variation rate stood at -2.47%, implying an improvement of 1.18 points as compared with the first quarter (-3.65%).

The number of employed women decreased by 11,300 this quarter, whereas employment of men increased by 94,000.

In the last 12 months, the number of employed women decreased by 101,200, and the number of men decreased by 366,900.

The number of employed Spaniards increased by 75,500 in the last three months, whereas the number of employed foreign nationals increased by 7,200. In the second quarter of 2010, 13.80% of the total number of employed persons were foreign nationals.

Employment increased this quarter among persons aged 35 to 39 years old (by 46,100) and among those aged over 44 years old (61,700 more). In contrast, it decreased among those aged less than 29 years old (23,700 fewer), and in the group aged 40 to 44 years old (12,000).

By sex, appreciable differences in employment were observed among women in the age groups 35 to 39 and 45 to 49 years old. In contrast, the number of employed persons decreased in those aged 40 to 44 years old (23,500 fewer) and 20 to 29 years old (37,900). Among men, unemployment increased in all practically all age groups, in particular from the age of 35 years old and among young persons aged 20 to 24 years old.

With regard to the quarter-on-quarter evolution by activity sector, the number of those employed in *Agriculture* decreased by 57,000, standing at 778,200. Those employed in *Industry* increased by 19,000 persons, reaching a total of 2,618,900. In the *Construction*

sector, there was an increase in the number of employed persons of 36,700 in the second quarter, with total employment for the sector standing at 1,699,700 persons. Lastly, the number of those employed in *Services* stood at 13,380,100, with an increase of 84,000.

In interannual variation, employment decreased by 56,800 in *Services* (−0.42%), by 222,400 in *Construction* (−11.57%), by 180,500 in *Industry* (−6.45%) and by 8,500 in *Agriculture* (−1.08%).

The total number of wage earners increased by 110,200, and that of wage earners with temporary contract increased by 101,600

The total number of wage earners in the second quarter of 2010 was 15,363,400, with an increase of 110,200 as compared with the previous quarter. The number of employees with a permanent contract increased 8,600, reaching 11,541,300, whereas employees with a temporary contract increased by 101,600, reaching a total of 3,822,100.

The temporary employment rate stood at 24.88%, which was 49 hundredths above the rate from the previous quarter.

In the last 12 months, the total number of wage earners decreased by 373,400 persons. Wage earners with a permanent contract decreased by 224,000 persons, and those with a temporary contract decreased by 149,400.

The salary rate increased 23 hundredths, standing at 83.15%.

The number of freelance workers decreased by 26,900 in the last three months and by 92,100 in one year. The group with the greatest decreases in employment was *Family aid* (18,100 fewer in the quarter).

Regarding the working day, in this quarter 2,498,600 part-time employed persons were registered, 46,900 more than in the previous quarter. Of these, 1,930,700 were women (12,600 more than three months ago) and 567,900 were men (34,400 more).

Full-time employed persons increased 35,800 as compared with the first quarter. The number of men employed full-time increased by 59,600, whereas the number of women decreased by 23,800.

The percentage of part-time employees was 13.52%, that is, 19 hundredths more than the previous quarter.

The number of unemployed persons increased 32,800, reaching 4,645,500

The increase in employment has not been able to absorb that experienced by the number of active persons, therefore unemployment increased by 32,800 persons this quarter. The total number of unemployed persons stood at 4,645,500, with an increase of 508,000 during the last 12 months.

The rate of unemployment increased four hundredths in the second quarter, now accounting for 20.09% of the economically active population.

Unemployment decreased among men (15,700 fewer unemployed persons), whereas it increased among women (48,500 more).

The unemployment rate for men was 19.72%, which was 24 hundredths less than in the first quarter of 2010. The rate for women increased four tenths, standing at 20.56%.

Unemployment grew by 58,800 persons among Spaniards, and decreased by 26,000 among foreign nationals. The unemployment rate for Spaniards was 18.19% (18 hundredths higher than the previous quarter), while the rate for foreign nationals was 30.24% (55 hundredths less than three months ago).

By sex and age, unemployment decreased among men aged 25 to 54 years old (47,900 fewer unemployed persons) and among women aged 55 years old and over (9,100). In contrast, it increased by 33,900 in women aged 25 to 54 years old, and by 20,300 in men aged 55 years old and over.

Regarding quarter-on-quarter evolution by sector, unemployment decreased in *Construction* (73,900 fewer), in *Services* (61,500) and in *Industry* (35,700). Conversely, it increased in *Agriculture* (36,800 more).

Unemployment increased by 129,100 persons among those who lost their job over a year ago, and by 38,000 among those seeking their first job.

Making an interannual comparison, unemployment decreased in *Construction* (174,200 fewer) in *Industry* (127,500) and in *Services* (22,800). Conversely, there was an increase of 41,100 more unemployed persons in *Agriculture* in the last 12 months.

Internally, unemployment also increased among those who lost their job over a year ago (by 716,200) and in those seeking their first job (by 75,200).

The unemployment rate for the household reference person rose three hundredths and stood at 16.59%. The rate for the spouse or partner increased six hundredths to 16.81%, and the rate for sons or daughters increased 17 hundredths, reaching 32.11%.

The number of households with all active members unemployed was 1,308,300

The number of households in which all active members were unemployed increased 9,800 as compared with the previous quarter, and 190,000 in the last 12 months. The total number of households in this situation was 1,308,300.

In the second quarter of 2010, the number of households with all active members working decreased 19,600, reaching 9,175,500. In the last 12 months, there were 344,000 fewer households in this category.

Mobility as related to activity

Regarding quarter-on-quarter mobility as related to activity, the proportion of unemployed persons who had been employed three months prior was 16.35%, indicating a decrease of 3.81 points on the rate registered in the first quarter of 2010.

The percentage of employed persons who had also been employed three months prior was 92.72%, that is, 76 hundredths less than the first quarter.

The percentage of persons employed the current quarter, and who had been unemployed in the first quarter, was 4.87%, that is, 69 hundredths more than three months ago. The percentage of employed persons who had been inactive before was 2.4%, which was 31 hundredths more than in the first quarter.

The percentage of inactive persons who had been employed during the previous quarter decreased 43 hundredths, to 3.16%.

65.19% of the unemployed persons this quarter had also been unemployed the previous quarter, indicating a 4.67 point increase.

92.88% of inactive persons had also been inactive three months prior. This percentage was four hundredths higher than that recorded the previous quarter.

Results by Autonomous Community

The greatest increases in the number of **active persons** this quarter were observed in Cataluña (42,600 more) and Illes Balears (36,900). The most pronounced drops were recorded in Canarias (11,800) and Aragón (10,200).

Regarding **employment**, the Communities in which it increased in the second quarter of 2010 were Illes Balears (43,600 more employed persons), Cataluña (42,700), País Vasco (17,000), Extremadura (16,400) and Región de Murcia (14,300). Conversely, the greatest decreases occurred in Canarias (27,900 fewer employed persons), Comunitat Valenciana (24,400) and Andalucía (21,000).

In the last 12 months, only País Vasco (9,500 more) and Comunidad Foral de Navarra (2,100) presented increases in the number of employed persons. The greatest drops were produced in Comunitat Valenciana (114,000 fewer employed persons), Comunidad de Madrid (73,700), Andalucía (61,200), Galicia (53,700) and Cataluña (48,000).

With regard to **unemployment**, the greatest decreases in unemployment this quarter were observed in Región de Murcia (13,900 fewer unemployed persons), Aragón (8,000) and Illes Balears (6,700). In turn, the greatest increases in the number of unemployed persons were recorded in Andalucía (23,200 more unemployed persons), Comunitat Valenciana (18,600), Canarias (16,100) and Comunidad de Madrid (11,200).

In interannual variation, only Comunidad Foral de Navarra registered an appreciable decrease in unemployment (4,200 fewer unemployed persons). The greatest increases corresponded to Andalucía (105,300 more unemployed persons in the last 12 months), Comunidad de Madrid (100,300), Cataluña (74,200) and Comunitat Valenciana (53,000).

País Vasco (10.40%), Comunidad Foral de Navarra (10.96%), La Rioja (12.19%) and Cantabria (13.89%) were the Autonomous Communities with the lowest **unemployment rates** in the second quarter of 2010. The highest rates were recorded in Canarias (29.48%), Andalucía (27.78%) and Comunitat Valenciana (23.83%).

The lowest female unemployment rates this quarter were found in País Vasco (11.20%), Comunidad Foral de Navarra (11.52%) and La Rioja (14.32%).

In Región de Murcia, Canarias, Cataluña, Illes Balears and Comunitat Valenciana, the female unemployment rate was lower than the male rate this quarter.

Among the Communities in which the female unemployment rate was higher than the male rate, worth noting were Extremadura (6.45 points higher), Castilla y León (5.52) and Castilla-La Mancha (4.35 points more).

The Autonomous Communities with the highest **activity rates** in the second quarter of 2010 were Illes Balears (67.83%), Comunidad de Madrid (65.22%) and Cataluña (62.86%).

The lowest activity rates this quarter were observed in Principado de Asturias (51.54%) and Galicia (54.36%).

Results by province

The provincial results summary of the EAPS may be accessed via the following link:

http://www.ine.es/en/daco/daco42/daco4211/epapro0210_en.pdf

All of the provincial information from this survey may be accessed via the following links:

- In the INEbase database
<http://www.ine.es/jaxiBD/menu.do?L=1&divi=EPA&his=0&type=db>
- In the TEMPUS database
<http://www.ine.es/menu/redir/GSTConsul.shtml?divi=EPA>

For further information see [INEbase-www.ine.es/en/welcome_en.htm](http://www.ine.es/en/welcome_en.htm) All press releases at: www.ine.es/en/prensa/prensa_en.htm

Press Office: Telephone numbers: 91 583 93 63 / 94 08 – Fax: 91 583 90 87 - gprensa@ine.es

Information Area: Telephone number: 91 583 91 00 – Fax: 91 583 91 58 – www.ine.es/infoinees/infoine

Methodological note

General features

The Economically Active Population Survey (EAPS) is a continuous, sample-based study aimed at family dwellings, and which has been conducted since 1964.

The additional sample collected by the *Galician Statistics Institute* (IGE) has been incorporated as of the third quarter of 2009, using the same fieldwork system and identical methodology to that of the INE. Therefore, apart from the 3,588 census sections that have made up the sample for the whole of Spain since 2005, we must take into account the 234 additional sections in the Autonomous Community of Galicia. Since the third quarter of 2009, the EAPS sample is made up of 3,822 census sections from the more than 30,000 census sections into which Spain is divided. An average of 18 households are surveyed in each one, except in the provinces of Barcelona, Madrid, Sevilla, Valencia and Zaragoza, where the number of households surveyed is 22. Thus, the sample size is approximately 65,000 dwellings, providing information on some 180,000 persons. The data is collected via personal and telephone interviews. The information is carefully filtered and computer-processed. Results are obtained within the month following the end of the reference quarter for the data.

Main definitions

Active persons: persons aged 16 and over who, during the reference week (the week prior to that when the interview is held), supplied labour for the production of economic goods and services or were available to do so, and carried out actions to incorporate themselves into said production. They are divided into employed and unemployed persons.

Employed persons: persons aged 16 and over who, during the reference week, worked for at least one hour in exchange for payment (salary, wage, business benefit, etc.) in cash or in kind. Persons who, being employed, had been temporarily absent from their job due to illness, holidays, etc., are also considered employed persons.

Employed persons are classified, considering their professional status, as non-wage earners (employers, businesspersons without wage earners and independent workers, cooperative members, family assistance) and wage earners (public or private).

Considering the length of the working day, employed persons are classified as full-time and part-time employed persons. The usual working week may not be shorter than 30 hours in the first case, nor exceed 35 hours in the second.

Wage earners are classified as permanent and temporary. For the latter, the end of their contract or work relationship is set by means of objective conditions, such as the expiry of a certain period of time, the completion of a specific task, etc.

A significant category within employment is that of **time-related underemployment**, defined in the 16th International Labour Statisticians Conference (Geneva, 1998). The EAPS considers persons suffering time-related underemployment as employed persons who would like to work more hours, who are available to work more hours and whose effective working hours in the reference week are less than the number of hours usually worked by employed persons working full-time in the same branch of activity as that in which the underemployed person develops his/her main job.

Unemployed persons: persons aged 16 and over who, during the reference week, were jobless, available for work, and actively looking for a job. Persons who might have already found a job and are waiting to start are also considered to be unemployed, provided that they meet the first two conditions.

According to European Commission Regulation 1897/2000, the following are considered as active search methods in the four weeks prior to the interview:

- Being in contact with a public employment office for the purpose of finding work, whatever part they play in the initiative (the renewal of registration due to purely administrative reasons does not constitute active planning).
- Being in contact with a private office (temporary employment office, specialised hiring agency, etc.) with the objective of finding work.
- Having sent an application directly to employers.
- Having searched via personal relations and trade unions, etc.
- Having advertised oneself or responded to newspaper advertisements.
- Having studied employment offers.
- Having taken part in a test, public exam or interview in the framework of a contracting procedure.
- Having looked for land, premises or material.
- Having taken steps to obtain permits, licences or financial resources.

Inactive persons: persons aged 16 years old and over not included in any of the above categories.

Economically Active Population Survey Second Quarter 2010

National results

(Continues)

	Current quarter	Variation on previous quarter		Variation on same quarter, previous year	
		Difference	Percentage	Difference	Percentage
1. Population aged 16 years and over by sex and labour status					
BOTH SEXES					
Population aged 16 years and over	38,467.8	17.0	0.04	35.7	0.09
Active population	23,122.3	115.5	0.50	39.9	0.17
- Employed	18,476.9	82.7	0.45	-468.1	-2.47
- Unemployed	4,645.5	32.8	0.71	508.0	12.28
Inactive	15,345.4	-98.5	-0.64	-4.2	-0.03
Activity rate	60.11	0.27	-	0.05	-
Unemployment rate	20.09	0.04	-	2.17	-
Population aged 16 to 64 years	30,832.8	-16.8	-0.05	-88.4	-0.29
Activity rate (16-64)	74.47	0.39	-	0.31	-
Unemployment rate (16-64)	20.21	0.04	-	2.18	-
Employment rate (16-64)	59.42	0.28	-	-1.37	-
MALES					
Population aged 16 years and over	18,827.5	-0.6	0.00	-28.1	-0.15
Active population	12,871.9	78.3	0.61	-118.1	-0.91
- Employed	10,333.9	94.0	0.92	-366.9	-3.43
- Unemployed	2,538.0	-15.7	-0.62	248.8	10.87
Inactive	5,955.6	-78.8	-1.31	90.0	1.53
Activity rate	68.37	0.42	-	-0.52	-
Unemployment rate	19.72	-0.24	-	2.09	-
Population aged 16 to 64 years	15,555.4	-16.4	-0.11	-85.1	-0.54
Activity rate (16-64)	82.16	0.57	-	-0.33	-
Unemployment rate (16-64)	19.82	-0.26	-	2.09	-
Employment rate (16-64)	65.87	0.66	-	-1.99	-
FEMALES					
Population aged 16 years and over	19,640.3	17.5	0.09	63.8	0.33
Active population	10,250.5	37.2	0.36	158.0	1.57
- Employed	8,142.9	-11.3	-0.14	-101.2	-1.23
- Unemployed	2,107.5	48.5	2.36	259.2	14.02
Inactive	9,389.8	-19.7	-0.21	-94.2	-0.99
Activity rate	52.19	0.14	-	0.64	-
Unemployment rate	20.56	0.40	-	2.25	-
Population aged 16 to 64 years	15,277.4	-0.4	0.00	-3.3	-0.02
Activity rate (16-64)	66.64	0.21	-	0.99	-
Unemployment rate (16-64)	20.69	0.41	-	2.28	-
Employment rate (16-64)	52.86	-0.10	-	-0.71	-

2. Spanish population¹ aged 16 years and over by labour status

SPANISH POPULATION AGED 16 YEARS AND OVER	33,714.3	18.5	0.05	69.4	0.21
Active population	19,466.4	134.3	0.69	94.6	0.49
- Employed	15,926.3	75.5	0.48	-346.9	-2.13
- Unemployed	3,540.1	58.8	1.69	441.5	14.25
Inactive	14,247.9	-115.8	-0.81	-25.2	-0.18
Activity rate	57.74	0.37	-	0.16	-
Unemployment rate	18.19	0.18	-	2.19	-

¹ including dual nationality

2010 July 30 th

National results

(Continuation)

	Current quarter	Variation on previous quarter		Variation on same quarter, previous year	
		Difference	Percentage	Difference	Percentage

3. Foreign population aged 16 years and over by labour status

FOREIGN POPULATION AGED 16 YEARS AND OVER	4,753.5	-1.5	-0.03	-33.6	-0.70
Active population	3,655.9	-18.8	-0.51	-54.7	-1.47
- Employed	2,550.5	7.2	0.29	-121.2	-4.54
- Unemployed	1,105.4	-26.0	-2.30	66.6	6.41
Inactive	1,097.6	17.2	1.60	21.0	1.95
Activity rate	76.91	-0.37	-	-0.60	-
Unemployment rate	30.24	-0.55	-	2.24	-

4. Employed by sex, age group and economic sector

BOTH SEXES	18,476.9	82.7	0.45	-468.1	-2.47
16 to 19 years	154.8	-0.8	-0.53	-49.1	-24.09
20 to 24 years	1,045.1	-5.2	-0.50	-137.5	-11.63
25 to 29 years	2,156.1	-17.7	-0.81	-208.4	-8.81
30 to 34 years	2,862.2	10.6	0.37	-94.0	-3.18
35 to 39 years	2,847.4	46.1	1.64	-19.5	-0.68
40 to 44 years	2,653.1	-12.0	-0.45	-8.0	-0.30
45 to 49 years	2,425.3	30.5	1.27	5.7	0.24
50 to 54 years	2,001.0	19.6	0.99	59.3	3.06
55 and over	2,331.9	11.6	0.50	-16.7	-0.71
MALES	10,333.9	94.0	0.92	-366.9	-3.43
16 to 19 years	93.8	-1.0	-1.01	-28.5	-23.30
20 to 24 years	547.0	13.7	2.57	-75.3	-12.10
25 to 29 years	1,109.7	1.3	0.12	-127.2	-10.29
30 to 34 years	1,568.0	5.0	0.32	-70.5	-4.30
35 to 39 years	1,606.1	18.5	1.17	-0.4	-0.03
40 to 44 years	1,487.4	11.5	0.78	-12.2	-0.82
45 to 49 years	1,359.7	17.9	1.33	-2.2	-0.16
50 to 54 years	1,138.4	17.1	1.52	-11.2	-0.98
55 and over	1,423.7	10.0	0.71	-39.3	-2.69
FEMALES	8,142.9	-11.3	-0.14	-101.2	-1.23
16 to 19 years	61.0	0.1	0.23	-20.6	-25.27
20 to 24 years	498.1	-18.9	-3.66	-62.2	-11.10
25 to 29 years	1,046.4	-19.0	-1.78	-81.2	-7.20
30 to 34 years	1,294.2	5.6	0.44	-23.5	-1.78
35 to 39 years	1,241.3	27.6	2.27	-19.0	-1.51
40 to 44 years	1,165.6	-23.5	-1.98	4.3	0.37
45 to 49 years	1,065.5	12.6	1.20	7.9	0.75
50 to 54 years	862.7	2.5	0.30	70.6	8.91
55 and over	908.2	1.6	0.17	22.6	2.55
TOTAL EMPLOYED	18,476.9	82.7	0.45	-468.1	-2.47
Agriculture	778.2	-57.0	-6.83	-8.5	-1.08
Industry	2,618.9	19.0	0.73	-180.5	-6.45
Construction	1,699.7	36.7	2.21	-222.4	-11.57
Services	13,380.1	84.0	0.63	-56.8	-0.42

National results

(Continuation)

	Current quarter	Variation on previous quarter		Variation on same quarter, previous year	
		Difference	Percentage	Difference	Percentage

5. Employed by professional status, type of contract and working hours

TOTAL EMPLOYED	18,476.9	82.7	0.45	-468.1	-2.47
Self-employed workers	3,103.9	-26.9	-0.86	-92.1	-2.88
- Employers	1,036.7	-11.3	-1.08	-43.4	-4.02
- Independent workers	1,885.1	5.2	0.28	-33.7	-1.75
- Cooperatives members	29.9	-2.7	-8.32	-0.2	-0.51
- Family workers	152.2	-18.1	-10.65	-14.9	-8.91
Employees	15,363.4	110.2	0.72	-373.4	-2.37
- With a permanent job	11,541.3	8.6	0.07	-224.0	-1.90
- With a temporary job	3,822.1	101.6	2.73	-149.4	-3.76
Others	9.5	-0.6	-5.48	-2.6	-21.63
FULL-TIME EMPLOYED	15,978.2	35.8	0.22	-516.2	-3.13
Males	9,766.0	59.6	0.61	-422.5	-4.15
Females	6,212.2	-23.8	-0.38	-93.6	-1.49
PART-TIME EMPLOYED	2,498.6	46.9	1.91	48.1	1.96
Males	567.9	34.4	6.44	55.6	10.85
Females	1,930.7	12.6	0.65	-7.5	-0.39

6. Unemployed by sex, age group, and economic sector

BOTH SEXES	4,645.5	32.8	0.71	508.0	12.28
16 to 19 years	255.8	24.4	10.57	-7.0	-2.65
20 to 24 years	615.3	11.1	1.84	22.9	3.86
25 to 54 years	3,413.3	-14.0	-0.41	440.1	14.80
55 and over	361.1	11.2	3.20	52.0	16.81
MALES	2,538.0	-15.7	-0.62	248.8	10.87
16 to 19 years	146.2	7.6	5.52	-14.6	-9.07
20 to 24 years	346.3	4.2	1.22	12.2	3.65
25 to 54 years	1,817.1	-47.9	-2.57	200.0	12.37
55 and over	228.3	20.3	9.77	51.2	28.93
FEMALES	2,107.5	48.5	2.36	259.2	14.02
16 to 19 years	109.6	16.8	18.10	7.6	7.46
20 to 24 years	268.9	6.9	2.64	10.7	4.13
25 to 54 years	1,596.2	33.9	2.17	240.2	17.71
55 and over	132.8	-9.1	-6.44	0.7	0.56
TOTAL UNEMPLOYED	4,645.5	32.8	0.71	508.0	12.28
Agriculture	235.6	36.8	18.52	41.1	21.13
Industry	266.9	-35.7	-11.81	-127.5	-32.33
Construction	527.6	-73.9	-12.28	-174.2	-24.82
Services	1,442.8	-61.5	-4.09	-22.8	-1.55
Lost their job more than 1 year ago	1,810.8	129.1	7.68	716.2	65.44
First job seekers	361.8	38.0	11.73	75.2	26.25

National results (Conclusion)

	Current quarter	Variation on previous quarter		Variation on same quarter, previous year	
		Difference	Percentage	Difference	Percentage

7. Unemployment rate by relationship with the reference person

TOTAL	20.09	0.04	-	2.17	-
Reference person	16.59	0.03	-	1.69	-
Spouse or partner	16.81	0.06	-	1.89	-
Child	32.11	0.17	-	3.89	-
Other relatives	27.81	-1.27	-	2.52	-
Unrelated persons	19.87	0.29	-	3.54	-

8. Household data

TOTAL HOUSEHOLDS	17,127.8	12.4	0.07	76.0	0.45
Households with at least one active memt	12,903.6	36.5	0.28	14.3	0.11
- All member employed	9,175.5	-19.6	-0.21	-344.0	-3.61
- All member unemployed	1,308.3	9.8	0.75	190.0	16.99
Households without any active populator	4,224.2	-24.1	-0.57	61.6	1.48

Mobility according to activity in current and previous quarter

Classification in previous quarter	Classification in current quarter			
	Total	Employed	Unemployed	Inactive
BOTH SEXES				
Total	100.00	100.00	100.00	100.00
Employed	47.66	92.72	16.35	3.16
Unemployed	11.53	4.87	65.19	4.01
Inactive	40.81	2.40	18.46	92.83
MALES				
Total	100.00	100.00	100.00	100.00
Employed	54.38	93.00	17.25	3.29
Unemployed	12.96	5.15	69.13	3.95
Inactive	32.66	1.85	13.62	92.76
FEMALES				
Total	100.00	100.00	100.00	100.00
Employed	41.26	92.37	15.30	3.07
Unemployed	10.16	4.53	60.57	4.05
Inactive	48.58	3.10	24.12	92.88

Grossing up factors of current quarter (forward analysis)

Results by Autonomous Communities

(Continues)

	Current quarter	Variation on previous quarter		Variation on same quarter, previous year	
		Difference	Percentage	Difference	Percentage
1. Population aged 16 years and over					
TOTAL	38,467.8	17.0	0.04	35.7	0.09
Andalucía	6,756.7	13.0	0.19	44.5	0.66
Aragón	1,111.0	-0.8	-0.07	-7.5	-0.67
Asturias (Principado de)	931.6	-1.1	-0.12	-2.0	-0.22
Balears (Illes)	892.4	0.2	0.03	2.9	0.33
Canarias	1,741.8	1.8	0.10	8.7	0.50
Cantabria	495.2	0.1	0.02	-0.3	-0.06
Castilla y León	2,149.8	-2.5	-0.11	-16.1	-0.75
Castilla-La Mancha	1,698.1	1.0	0.06	1.4	0.08
Cataluña	6,072.9	8.4	0.14	-4.3	-0.07
Comunitat Valenciana	4,165.5	-6.1	-0.15	-27.5	-0.66
Extremadura	906.3	-0.3	-0.03	2.1	0.23
Galicia	2,383.2	-1.8	-0.07	-3.0	-0.12
Madrid (Comunidad de)	5,262.6	4.4	0.08	27.1	0.52
Murcia (Región de)	1,187.0	1.3	0.11	9.5	0.80
Navarra (Comunidad Foral de)	512.8	0.3	0.06	1.6	0.31
País Vasco	1,822.3	-2.1	-0.11	-3.4	-0.18
Rioja (La)	264.3	0.2	0.06	-2.4	-0.91
Ceuta	59.0	0.4	0.65	2.1	3.65
Melilla	55.4	0.6	1.03	2.5	4.69

2. Active population

TOTAL	23,122.3	115.5	0.50	39.9	0.17
Andalucía	3,974.2	2.1	0.05	44.2	1.12
Aragón	645.4	-10.2	-1.56	-12.8	-1.95
Asturias (Principado de)	480.1	-3.4	-0.71	-7.0	-1.45
Balears (Illes)	605.3	36.9	6.49	11.4	1.91
Canarias	1,076.3	-11.8	-1.08	15.1	1.43
Cantabria	280.1	2.8	1.02	-1.8	-0.65
Castilla y León	1,189.0	16.8	1.43	2.5	0.21
Castilla-La Mancha	981.5	-1.8	-0.18	1.4	0.14
Cataluña	3,817.7	42.6	1.13	26.2	0.69
Comunitat Valenciana	2,524.7	-5.8	-0.23	-61.0	-2.36
Extremadura	500.8	14.7	3.03	13.0	2.68
Galicia	1,295.4	-2.3	-0.17	-22.3	-1.69
Madrid (Comunidad de)	3,432.2	16.7	0.49	26.7	0.78
Murcia (Región de)	734.7	0.4	0.06	1.7	0.23
Navarra (Comunidad Foral de)	311.4	5.0	1.62	-2.1	-0.66
País Vasco	1,055.6	13.2	1.26	9.3	0.88
Rioja (La)	156.9	0.7	0.47	-4.0	-2.52
Ceuta	32.8	-0.4	-1.14	0.4	1.30
Melilla	28.3	-0.8	-2.74	-0.7	-2.52

* Data below 5000 are subject to strong variations, due to sampling error

Results by Autonomous Communities

(Conclusion)

	Current quarter	Variation on previous quarter		Variation on same quarter, previous year	
		Difference	Percentage	Difference	Percentage
3. Employed					
TOTAL	18,476.9	82.7	0.45	-468.1	-2.47
Andalucía	2,870.1	-21.0	-0.73	-61.2	-2.09
Aragón	553.7	-2.2	-0.40	-18.9	-3.29
Asturias (Principado de)	401.5	-2.0	-0.49	-17.3	-4.13
Balears (Illes)	484.6	43.6	9.89	-1.5	-0.31
Canarias	759.0	-27.9	-3.54	-29.1	-3.69
Cantabria	241.2	4.1	1.72	-7.7	-3.11
Castilla y León	995.0	8.7	0.88	-23.7	-2.33
Castilla-La Mancha	771.9	0.9	0.12	-16.9	-2.14
Cataluña	3,141.6	42.7	1.38	-48.0	-1.51
Comunitat Valenciana	1,922.9	-24.4	-1.25	-114.0	-5.60
Extremadura	388.5	16.4	4.40	-1.3	-0.34
Galicia	1,093.7	-3.4	-0.31	-53.7	-4.68
Madrid (Comunidad de)	2,868.5	5.4	0.19	-73.7	-2.50
Murcia (Región de)	578.4	14.3	2.53	-6.8	-1.16
Navarra (Comunidad Foral de)	277.3	8.6	3.20	2.1	0.77
País Vasco	945.7	17.0	1.83	9.5	1.01
Rioja (La)	137.7	5.4	4.06	-2.7	-1.90
Ceuta	24.0	-1.7	-6.70	-3.3	-11.93
Melilla	21.3	-1.6	-7.07	-0.1	-0.29

4. Unemployed

TOTAL	4,645.5	32.8	0.71	508.0	12.28
Andalucía	1,104.1	23.2	2.14	105.3	10.55
Aragón	91.6	-8.0	-8.03	6.0	7.04
Asturias (Principado de)	78.6	-1.4	-1.80	10.3	15.00
Balears (Illes)	120.7	-6.7	-5.28	12.9	11.93
Canarias	317.3	16.1	5.35	44.2	16.19
Cantabria	38.9	-1.3	-3.14	5.9	17.92
Castilla y León	194.0	8.1	4.37	26.2	15.60
Castilla-La Mancha	209.6	-2.6	-1.25	18.2	9.52
Cataluña	676.1	-0.1	-0.02	74.2	12.33
Comunitat Valenciana	601.7	18.6	3.19	53.0	9.67
Extremadura	112.3	-1.6	-1.43	14.4	14.66
Galicia	201.8	1.2	0.58	31.4	18.42
Madrid (Comunidad de)	563.7	11.2	2.03	100.3	21.66
Murcia (Región de)	156.3	-13.9	-8.15	8.5	5.73
Navarra (Comunidad Foral de)	34.1	-3.6	-9.59	-4.2	-10.94
País Vasco	109.8	-3.9	-3.41	-0.2	-0.20
Rioja (La)	19.1	-4.6	-19.55	-1.4	-6.73
Ceuta	8.8	1.3	18.09	3.7	(:)
Melilla	6.9	0.8	13.51	-0.7	-8.77

* Data below 5,000 are subject to strong variations, due to sampling error

(:) The variation percentages calculated from low figures with high sampling errors are not significant

Results by Autonomous Communities

(Absolute figures in thousands and rates in percentage)

5. Employed and unemployed by sex. Activity and unemployment rates

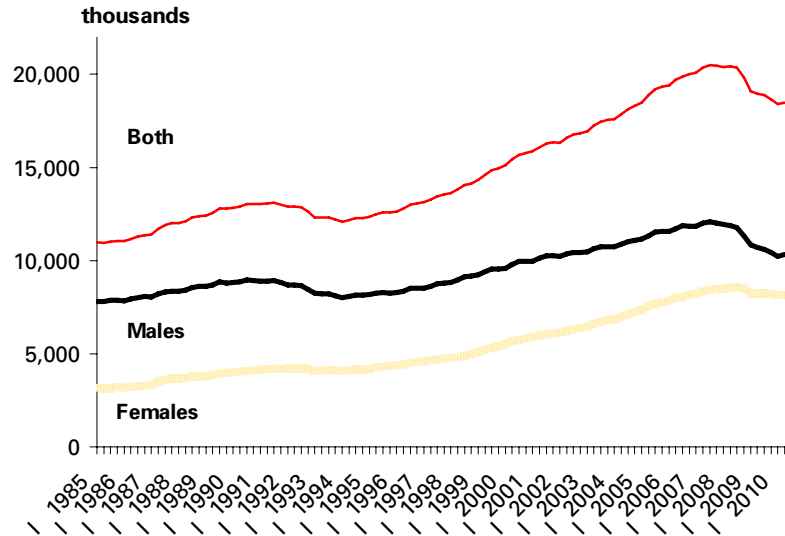
	Both sexes				Males				Females			
	Employed	Unemployed	Activity rate	Unem. rate	Employed	Unemployed	Activity rate	Unem. Rate	Employed	Unemployed	Activity rate	Unem. Rate
TOTAL	18,476.9	4,645.5	60.11	20.09	10,333.9	2,538.0	68.37	19.72	8,142.9	2,107.5	52.19	20.56
Andalucía	2,870.1	1,104.1	58.82	27.78	1,647.6	606.6	67.85	26.91	1,222.5	497.4	50.08	28.92
Aragón	553.7	91.6	58.09	14.20	316.5	47.2	66.12	12.97	237.2	44.4	50.21	15.78
Asturias	401.5	78.6	51.54	16.38	219.5	40.4	58.86	15.55	182.0	38.2	44.94	17.35
Balears (Illes)	484.6	120.7	67.83	19.94	263.9	66.3	74.20	20.07	220.7	54.4	61.49	19.78
Canarias	759.0	317.3	61.79	29.48	422.4	181.2	69.82	30.02	336.6	136.1	53.89	28.79
Cantabria	241.2	38.9	56.57	13.89	137.1	19.8	65.31	12.64	104.1	19.1	48.34	15.49
Castilla y Leon	995.0	194.0	55.31	16.32	579.3	93.7	63.55	13.92	415.7	100.3	47.31	19.44
Castilla-La Mancha	771.9	209.6	57.80	21.35	471.4	114.9	68.78	19.60	300.5	94.7	46.73	23.95
Cataluña	3,141.6	676.1	62.86	17.71	1,709.5	381.5	70.46	18.25	1,432.1	294.6	55.60	17.06
Comunitat Valenciana	1,923.0	601.7	60.61	23.83	1,079.5	339.4	69.01	23.92	843.4	262.3	52.42	23.72
Extremadura	388.5	112.3	55.26	22.43	235.3	57.9	65.55	19.76	153.2	54.4	45.24	26.21
Galicia	1,093.7	201.8	54.36	15.58	597.7	103.1	61.57	14.71	496.0	98.7	47.77	16.60
Madrid (Comunid.de)	2,868.5	563.7	65.22	16.42	1,537.1	300.4	72.87	16.35	1,331.4	263.3	58.18	16.51
Murcia (Región de)	578.4	156.3	61.89	21.27	331.8	92.7	70.87	21.84	246.6	63.6	52.74	20.49
Navarra (C. Foral de)	277.3	34.1	60.73	10.96	153.4	18.0	67.45	10.50	123.9	16.1	54.12	11.52
País Vasco	945.7	109.8	57.93	10.40	523.4	56.6	65.89	9.75	422.4	53.2	50.49	11.20
Rioja (La)	137.7	19.1	59.35	12.19	79.3	9.4	67.56	10.56	58.4	9.8	51.24	14.32
Ceuta	24.0	8.8	55.61	26.78	15.6	5.4	69.46	25.59	8.4	3.4	41.07	28.89
Melilla	21.3	6.9	51.05	24.53	13.6	3.5	64.51	20.55	7.7	3.4	38.64	30.68

* Data below 5,000 are subject to strong variations, due to sampling errors

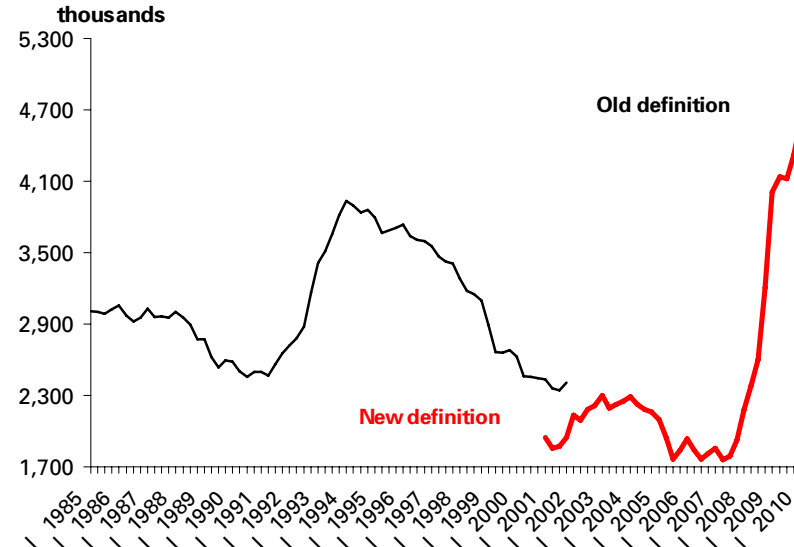
Employed and unemployed by sex

APS Second Quarter 2010

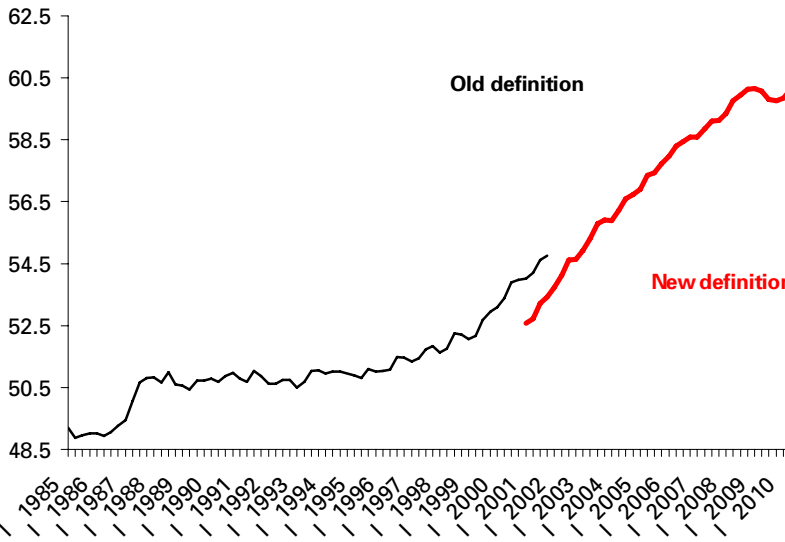
Employment



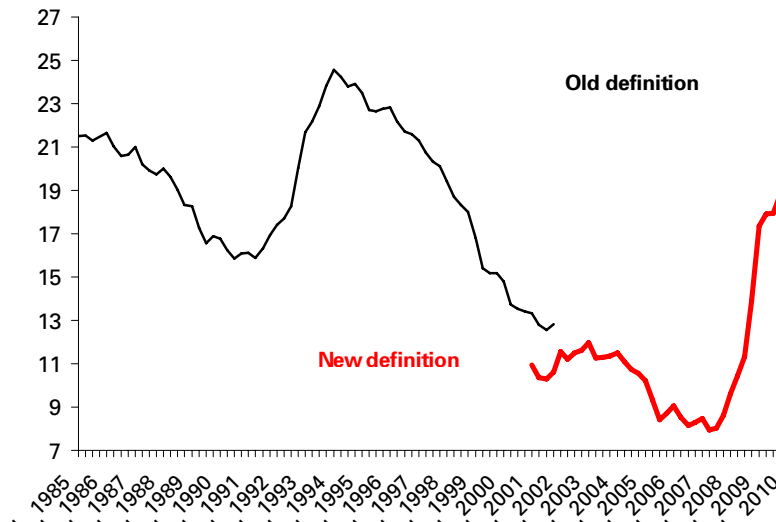
Unemployment



Activity rate



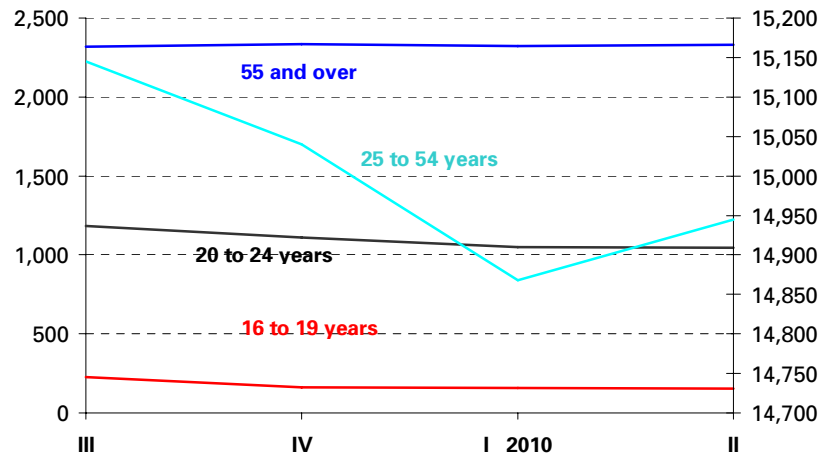
Unemployment rate



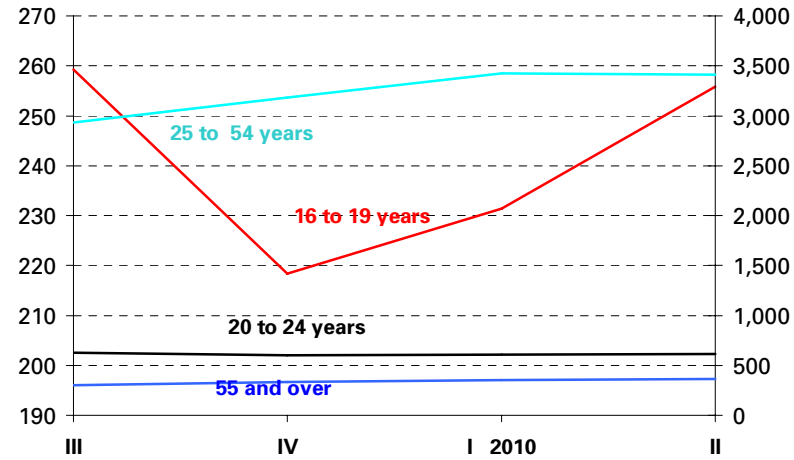
Employed and Unemployed by age

APS Second Quarter 2010

Employment

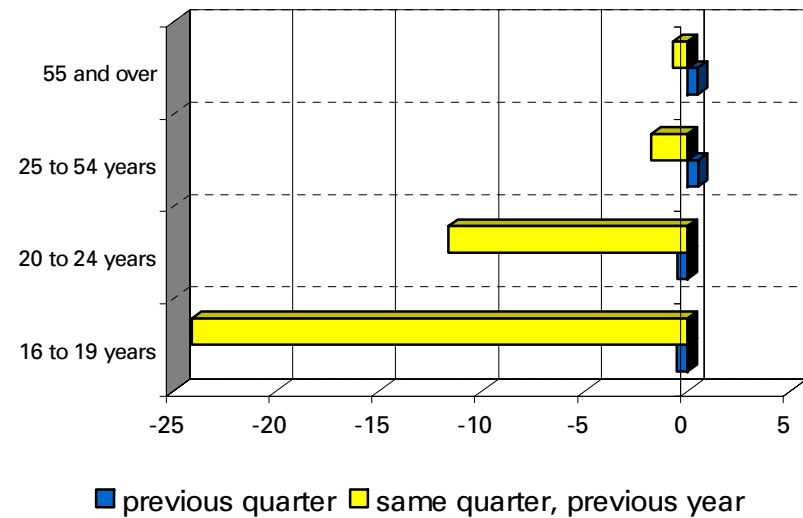


Unemployment

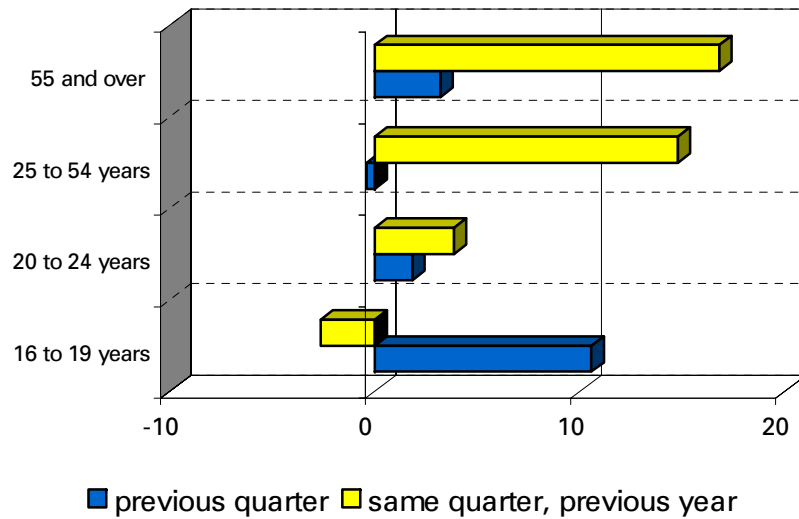


Variation percentages over the previous quarter and over the same quarter of the previous year

Employment

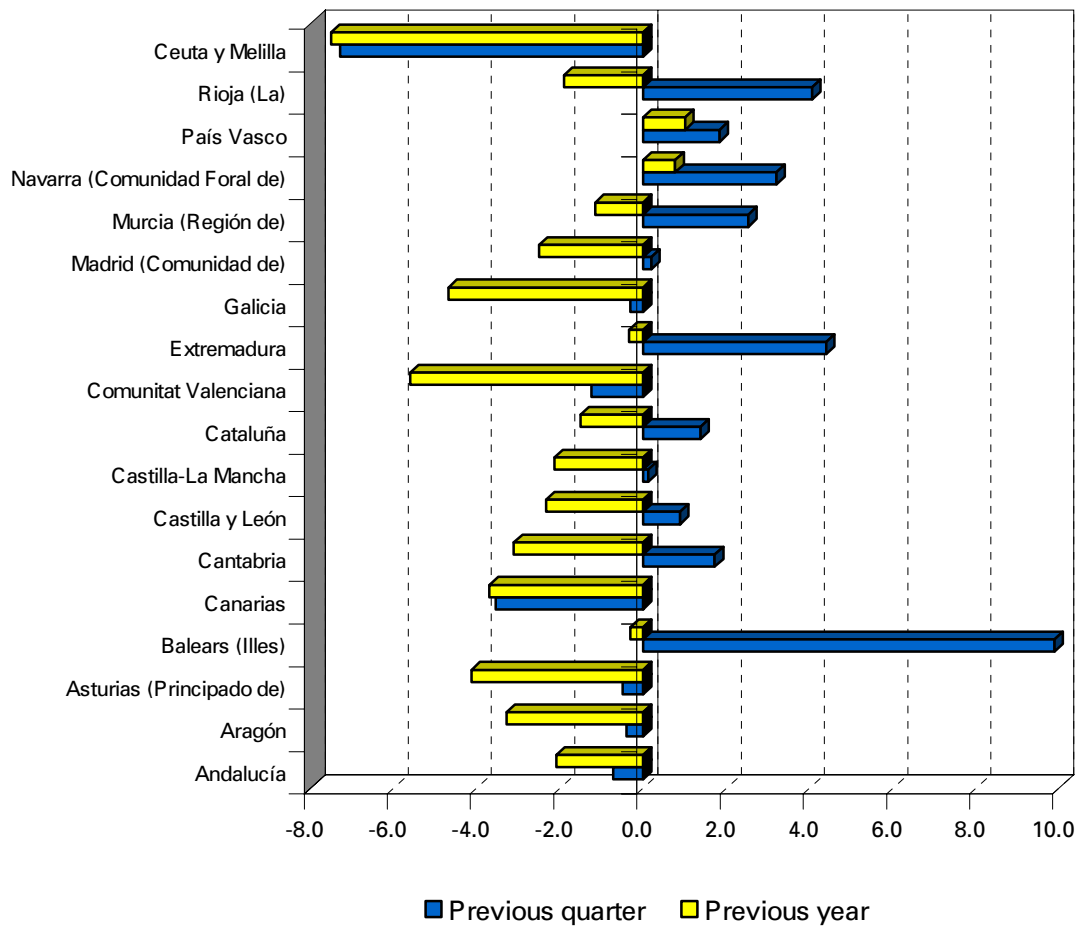


Unemployment



Employment variation percentages over the previous quarter and over the same quarter of the previous year

Second Quarter 2010



Unemployment rate (Spain = 20.09)

