

Economically Active Population Survey (EAPS)

Second quarter of 2011

Main results

- Employment in the second quarter of 2011 registers an increase of 151,400 persons, reaching a total of 18,303,000 employed persons. The interannual employment variation rate stands at -0.94%.
- The economically active population rises by 74,900 persons this quarter. The number of unemployed persons decreases by 76,500 persons, the total number thus standing at 4,833,700.
- The unemployment rate decreases four tenths, now standing at 20.89%. In turn, the activity rate once again exceeds 60%.
- The increase in employment is largely among women (143,500 more employed women, compared with 7,900 for men). Regarding unemployment, the decrease is also more pronounced in women (49,600, compared with 26,900 for men).
- *Services* and *Industry* increase their number of employed persons by 220,200 and 36,900, respectively. In contrast, in *Construction* there are 63,700 fewer employed persons, and in *Agriculture* there are 42,000 fewer employed persons.
- The total number of wage earners with a permanent contract grows by 14,800, and that of wage earners with a temporary contract does so by 156,800.
- The number of households with all of their active members unemployed decreases by 18,500 this quarter, standing at 1,367,500.
- By Autonomous Community, the unemployment rate fluctuates between 11.63% in País Vasco and 29.76% in Canarias. The activity rate fluctuates between the 52.22% recorded in Principado de Asturias, and the 65.75% in Illes Balears.
- Employment registers its greatest increase this quarter in Illes Balears, Cataluña and Comunitat Valenciana; it presents its greatest decreases Andalucía and País Vasco. In turn, unemployment experiences its greatest decrease in Cataluña and Illes Balears, while it registers the greatest increases in Comunidad de Madrid, Canarias and Castilla-La Mancha.

Economically active population and activity rate

The economically active population experienced an increase of 74,900 persons in the second quarter of 2011. The number of economically active persons stood at 23,136,700 persons.

In interannual terms, the variation of activity was very weak, since an increase of only 14,400 active persons was recorded, in line with that experienced by the population.

The general activity rate rose 24 hundredths in the second quarter, standing at 60.12%. The female activity rate reached a new maximum (53.14%), with a rise of 47 hundredths, as compared with the first quarter of the year.

The distance between the activity rates of Spaniards and foreign nationals was almost 19 points, in favour of the latter, this circumstance being largely explained by the different age structures of both populations.

Employment

The number of employed persons increased by 151,400 persons in the second quarter of 2011, standing at 18,303,000.

Growth in employment affected women (143,500 more employed women) much more than men (7,900). The number of employed foreign nationals increased by 5,700, and that of Spaniards did so by 145,700.

By age, employment grew among persons aged 45 years old and over, as well as in the age groups 16-19, 25-29 and 35-39 years. In contrast, young persons aged 20-24 years registered the greatest decrease in employment for this quarter.

The number of employed persons increased in *Services*, by 220,200, and in *Industry*, by 36,900. In contrast, it decreased in *Construction*, the sector that now had 63,700 fewer employed persons, and in *Agriculture* by 42,000.

The number of wage earners increased by 171,600, of whom 14,800 had a permanent contract, and 156,800 a temporary contract. The temporary employment rate stood at 25.52%, that is, 75 hundredths above the rate from the previous quarter.

Part-time employment increased by 21,600 persons this quarter, whilst full-time employed persons increased by 129,800. The percentage of persons working part-time remained unchanged at 14.14%.

The interannual variation of employment was -0.94% , that is, with an improvement of 38 hundredths, as compared with the previous quarter. Employment experienced a decrease of 173,800 persons in one year, 71,000 of whom were wage earners, and 101,700 of whom were self-employed workers.

The interannual decrease in employment among men (267,100 fewer employed men) was partly compensated for by an increase in employment among women (93,300 more employed women).

Unemployment and unemployment rate

Unemployment decreases by 76,500 persons this quarter, standing at 4,833,700. In the last 12 months, the total figure for unemployed persons increased by 188,200.

The unemployment rate fell four tenths, as compared with the first quarter of the year, reaching 20.89%.

The decrease in unemployment was reflected to a greater extent in women (49,600 fewer unemployed women) than in men (26,900).

The male unemployment rate was 20.58%, and the female rate was 21.27%. The female unemployment rate decreased 67 hundredths, while that of men did so by 18. The composition of unemployment observed since the year 2008 remained, with relatively little distance between the male and female rates, and a greater number of unemployed men than unemployed women.

By nationality, the decrease in unemployment was concentrated in Spaniards (72,500 fewer unemployed persons, against a decrease of 4,000 in foreign nationals). The unemployment rate for the foreign population almost reached 32%, and was more 13 points higher than that of persons with Spanish nationality.

Unemployment decreased in *Services* (73,800 fewer unemployed persons), in *Construction* (12,900) and in *Industry* (11,900). Unemployment also decreased among persons who lost their jobs more than one year ago (by 32,700). In contrast, unemployment rose in *Agriculture* (by 18,300 persons) and among those seeking their first job (by 36,400).

Mobility as related to economic activity

The probabilities of labour transition (mobility from one quarter to the next) showed an increase in the percentages of persons who were unemployed or inactive in the previous quarter.

The proportion of unemployed persons who were employed in the previous quarter decreased 2.5 points. The percentage of unemployed persons for the second quarter of the year who were already unemployed three months prior increased 1.67 points, reaching 66.55%.

Households

The number of households in which all active members were unemployed experienced a decrease of 18,500 in the second quarter of 2011, standing at 1,367,500. In parallel, the number of households in which all of the active members were employed increased by 95,000, reaching 9,161,100.

In an interannual comparison, the variation in both cases was unfavourable, though to a lesser extent than three months ago. The number of households in which all active persons were unemployed increased by 59,200, and the number of those in which all active members were employed decreased by 14,400.

Results by Autonomous Community

The incorporation of economically active persons in the labour market was especially significant this quarter in Comunidad de Madrid (28,000 more), Illes Balears (24,900) and Canarias (19,400). In contrast, the greatest decreases in the number of active persons was in Andalucía (33,600 fewer) and País Vasco (10,700).

In the last 12 months, the number of active persons has grown by 38,400 persons in Canarias, and by 21,400 in Castilla-La Mancha, whereas it decreased by more than 20,000 in Comunitat Valenciana and in Comunidad de Madrid.

The greatest increases in employment for this quarter were in Illes Balears (53,500 more), Cataluña (36,000) and Comunitat Valenciana (22,000). The most pronounced drops were recorded in Andalucía (24,900) and País Vasco (9,600).

Canarias presented the greatest positive variation in employment in the last 12 months (23,900 more employed persons). The most significant drops occurred in Andalucía (81,300 fewer jobs) and Región de Murcia (24,000).

Regarding unemployment, the Autonomous Communities that presented the largest quarterly decreases were Cataluña (with 36,800 fewer unemployed persons) and Illes Balears (28,500). The largest increases in unemployment this quarter were in Comunidad de Madrid (22,900 more unemployed persons) and Canarias (19,400).

In the last 12 months, unemployment has fallen significantly in Comunidad de Madrid, Comunitat Valenciana and Illes Balears.

País Vasco and Comunidad Foral de Navarra had unemployment rates under 13%. At the opposite extreme, Canarias and Andalucía presented rates above 29%. Activity rates fluctuated this quarter between the 65.75% recorded in Illes Balears, and the 52.22% registered in Principado de Asturias.

Results by province

The provincial results summary of the EAPS may be accessed via the following link:

http://www.ine.es/en/daco/daco42/daco4211/epapro0211_en.pdf

All of the provincial information from this survey may be accessed via the following links:

- In the INEbase database
<http://www.ine.es/jaxiBD/menu.do?L=1&divi=EPA&his=0&type=db>
- In the TEMPUS database
<http://www.ine.es/GSTConsul/arbolAction.do?divi=EPA>

For further information see [INEbase-www.ine.es/en/welcome_en.htm](http://www.ine.es/en/welcome_en.htm) All press releases at: www.ine.es/en/prensa/prensa_en.htm

Press Office: Telephone numbers: 91 583 93 63 / 94 08 – Fax: 91 583 90 87 - gprensa@ine.es

Information Area: Telephone number: 91 583 91 00 – Fax: 91 583 91 58 – www.ine.es/infoine/?L=1

Methodological note

General features

The Economically Active Population Survey (EAPS) is a continuous sample-based study aimed at family dwellings, and which has been conducted since 1964.

The additional sample collected by the *Galician Statistics Institute* (IGE) has been incorporated as of the third quarter of 2009, using the same fieldwork system and identical methodology to that of the INE. Therefore, apart from the 3,588 census sections that have made up the sample for the whole of Spain since 2005, we must take into account the 234 additional sections in the Autonomous Community of Galicia. Since the third quarter of 2009, the EAPS sample is made up of 3,822 census sections from the more than 30,000 census sections into which Spain is divided. An average of 18 households are surveyed in each one, except in the provinces of Barcelona, Madrid, Sevilla, Valencia and Zaragoza, where the number of households surveyed is 22. Thus, the sample size is approximately 65,000 dwellings, providing information on some 180,000 persons. The data is collected via personal and telephone interviews. The information is carefully filtered and computer-processed. Results are obtained within the month following the end of the reference quarter for the data.

As of the first quarter of 2011, occupation is encoded following the new 2011 National Classification of Occupations. A dual encoding of said variable has been carried out during the four quarters of 2010, with the old and the new classifications, from which, dual results have been published for that year (see the Detailed Results of the EAPS section, <http://www.ine.es/jaxiBD/menu.do?L=1&divi=EPA&his=1&type=db>). An equivalence matrix has also been calculated between the two classifications (http://www.ine.es/jaxi/menu.do?type=pcaxis&path=/t22/e308_mnu&file=inebase&N=&L=1, apartado Análisis y estudios), for the purpose of enabling the link in the employment series.

Main definitions

Active persons: persons aged 16 years old and over who, during the reference week (the week prior to that when the interview is held), supplied labour for the production of goods and services, or were available to do so and in conditions to incorporate themselves into said production. They are divided into employed and unemployed persons.

Employed persons: persons aged 16 years old and over who, during the reference week, worked for at least one hour in exchange for payment (salary, wage, business benefit, etc.) in cash or in kind. Persons who, being employed, had been temporarily absent from their job due to illness, holidays, etc., are also considered employed persons.

Employed persons are classified, considering their professional status, as non-wage earners (employers, businesspersons without wage earners and independent workers, cooperative members, family assistance) and wage earners (public or private).

Considering the length of the working day, employed persons are classified as full-time and part-time employed persons. The usual working week may not be shorter than 30 hours in the first case, nor exceed 35 hours in the second.

Wage earners are classified as permanent and temporary. For the latter, the end of their contract or work relationship is set by means of objective conditions, such as the expiry of a certain period of time, the completion of a specific task, etc.

A significant category within employment is that of **time-related underemployment**, defined in the 16th International Labour Statisticians Conference (Geneva, 1998). The EAPS considers persons suffering time-related underemployment as employed persons who would like to work more hours, who are available to work more hours and whose effective working hours in the reference week are less than the number of hours usually worked by employed persons working full-time in the same branch of activity as that in which the underemployed person develops his/her main job.

Unemployed persons: persons aged 16 years old and over who, during the reference week, were jobless, available for work, and actively looking for a job. Persons who might have already found a job and are waiting to start are also considered to be unemployed, provided that they meet the first two conditions.

According to European Commission Regulation 1897/2000, the following are considered to be active search methods, in the four weeks prior to the interview:

- Being in contact with a public employment office for the purpose of finding work, whatever part they play in the initiative (the renewal of registration due to purely administrative reasons does not constitute active planning).
- Being in contact with a private office (temporary employment agency, specialised hiring agency, etc.) with the objective of finding work.
- Having sent an application directly to employers.
- Having searched via personal relations and trade unions, etc.
- Having advertised oneself or responded to newspaper advertisements.
- Having studied job vacancies.
- Having taken part in a test, public exam or interview in the framework of a contracting procedure.
- Having looked for land, premises or material.
- Having taken steps to obtain permits, licences or financial resources.

Inactive population: persons aged 16 years old and over not included in any of the above categories.

Economically Active Population Survey Second Quarter 2011

National results

(Continues)

	Current quarter	Variation on previous quarter		Variation on same quarter, previous year	
		Difference	Percentage	Difference	Percentage
1. Population aged 16 years and over by sex and labour status					
BOTH SEXES					
Population aged 16 years and over	38,481.2	-30.8	-0.08	13.4	0.03
Active population	23,136.7	74.9	0.32	14.4	0.06
- Employed	18,303.0	151.4	0.83	-173.8	-0.94
- Unemployed	4,833.7	-76.5	-1.56	188.2	4.05
Inactive	15,344.5	-105.7	-0.68	-1.0	-0.01
Activity rate	60.12	0.24	-	0.02	-
Unemployment rate	20.89	-0.40	-	0.80	-
Population aged 16 to 64 years	30,710.0	-67.5	-0.22	-122.8	-0.40
Activity rate (16-64)	74.85	0.42	-	0.38	-
Unemployment rate (16-64)	21.02	-0.40	-	0.81	-
Employment rate (16-64)	59.12	0.63	-	-0.30	-
MALES					
Population aged 16 years and over	18,794.7	-31.9	-0.17	-32.7	-0.17
Active population	12,675.0	-19.0	-0.15	-196.9	-1.53
- Employed	10,066.8	7.9	0.08	-267.1	-2.58
- Unemployed	2,608.1	-26.9	-1.02	70.2	2.76
Inactive	6,119.8	-12.9	-0.21	164.2	2.76
Activity rate	67.44	0.01	-	-0.93	-
Unemployment rate	20.58	-0.18	-	0.86	-
Population aged 16 to 64 years	15,459.4	-48.9	-0.32	-96.0	-0.62
Activity rate (16-64)	81.45	0.12	-	-0.71	-
Unemployment rate (16-64)	20.71	-0.16	-	0.88	-
Employment rate (16-64)	64.59	0.23	-	-1.29	-
FEMALES					
Population aged 16 years and over	19,686.5	1.0	0.01	46.2	0.24
Active population	10,461.8	93.9	0.91	211.3	2.06
- Employed	8,236.2	143.5	1.77	93.3	1.15
- Unemployed	2,225.6	-49.6	-2.18	118.0	5.60
Inactive	9,224.7	-92.9	-1.00	-165.1	-1.76
Activity rate	53.14	0.47	-	0.95	-
Unemployment rate	21.27	-0.67	-	0.71	-
Population aged 16 to 64 years	15,250.6	-18.5	-0.12	-26.8	-0.18
Activity rate (16-64)	68.16	0.73	-	1.52	-
Unemployment rate (16-64)	21.39	-0.69	-	0.70	-
Employment rate (16-64)	53.58	1.04	-	0.72	-

2. Spanish population¹ aged 16 years and over by labour status

SPANISH POPULATION AGED 16 YEARS AND OVER					
	33,820.4	17.8	0.05	106.1	0.31
Active population	19,561.8	73.2	0.38	95.4	0.49
- Employed	15,867.3	145.7	0.93	-59.0	-0.37
- Unemployed	3,694.5	-72.5	-1.92	154.4	4.36
Inactive	14,258.6	-55.4	-0.39	10.7	0.08
Activity rate	57.84	0.19	-	0.10	-
Unemployment rate	18.89	-0.44	-	0.70	-

¹ including dual nationality

National results

(Continuation)

	Current quarter	Variation on previous quarter		Variation on same quarter, previous year	
		Difference	Percentage	Difference	Percentage
3. Foreign population aged 16 years and over by labour status					
FOREIGN POPULATION AGED 16 YEARS AND OVER	4,660.8	-48.6	-1.03	-92.7	-1.95
Active population	3,574.9	1.7	0.05	-81.0	-2.22
- Employed	2,435.7	5.7	0.23	-114.8	-4.50
- Unemployed	1,139.2	-4.0	-0.35	33.8	3.06
Inactive	1,085.8	-50.3	-4.43	-11.7	-1.07
Activity rate	76.70	0.83	-	-0.21	-
Unemployment rate	31.87	-0.13	-	1.63	-

4. Employed by sex, age group and economic sector

BOTH SEXES	18,303.0	151.4	0.83	-173.8	-0.94
16 to 19 years	131.0	16.0	13.91	-23.8	-15.39
20 to 24 years	904.8	-23.7	-2.55	-140.3	-13.42
25 to 29 years	2,008.3	22.9	1.15	-147.9	-6.86
30 to 34 years	2,755.7	0.4	0.01	-106.5	-3.72
35 to 39 years	2,909.9	30.4	1.06	62.5	2.19
40 to 44 years	2,646.7	-3.9	-0.15	-6.4	-0.24
45 to 49 years	2,448.6	34.2	1.42	23.4	0.96
50 to 54 years	2,065.7	28.3	1.39	64.7	3.23
55 and over	2,432.4	46.8	1.96	100.5	4.31
MALES	10,066.8	7.9	0.08	-267.1	-2.58
16 to 19 years	69.5	0.3	0.41	-24.3	-25.89
20 to 24 years	455.7	-11.9	-2.55	-91.3	-16.69
25 to 29 years	1,040.6	17.4	1.70	-69.1	-6.23
30 to 34 years	1,484.5	-18.8	-1.25	-83.5	-5.33
35 to 39 years	1,606.9	4.9	0.31	0.7	0.05
40 to 44 years	1,481.6	-0.4	-0.02	-5.9	-0.39
45 to 49 years	1,350.7	6.0	0.45	-9.0	-0.66
50 to 54 years	1,154.0	5.7	0.50	15.7	1.38
55 and over	1,423.3	4.7	0.33	-0.4	-0.03
FEMALES	8,236.2	143.5	1.77	93.3	1.15
16 to 19 years	61.4	15.7	34.36	0.5	0.77
20 to 24 years	449.1	-11.8	-2.55	-49.0	-9.84
25 to 29 years	967.7	5.5	0.57	-78.7	-7.52
30 to 34 years	1,271.2	19.2	1.53	-22.9	-1.77
35 to 39 years	1,303.0	25.5	1.99	61.7	4.97
40 to 44 years	1,165.2	-3.5	-0.30	-0.5	-0.04
45 to 49 years	1,097.9	28.2	2.64	32.4	3.04
50 to 54 years	911.6	22.6	2.54	49.0	5.68
55 and over	1,009.1	42.1	4.35	100.9	11.11
TOTAL EMPLOYED	18,303.0	151.4	0.83	-173.8	-0.94
Agriculture	741.2	-42.0	-5.36	-36.9	-4.74
Industry	2,577.7	36.9	1.45	-41.2	-1.57
Construction	1,430.2	-63.7	-4.27	-269.5	-15.85
Services	13,553.9	220.2	1.65	173.7	1.30

National results

(Continuation)

	Current quarter	Variation on previous quarter		Variation on same quarter, previous year	
		Difference	Percentage	Difference	Percentage
5. Employed by professional status, type of contract and working hours					
TOTAL EMPLOYED	18,303.0	151.4	0.83	-173.8	-0.94
Self-employed workers	3,002.2	-22.7	-0.75	-101.7	-3.28
- Employers	952.7	-21.7	-2.23	-84.0	-8.10
- Independent workers	1,870.9	7.2	0.38	-14.2	-0.75
- Cooperatives members	34.8	1.8	5.35	4.8	16.13
- Family workers	143.8	-9.9	-6.43	-8.4	-5.52
Employees	15,292.4	171.6	1.13	-71.0	-0.46
- With a permanent job	11,389.6	14.8	0.13	-151.8	-1.31
- With a temporary job	3,902.9	156.8	4.19	80.8	2.11
Others	8.4	2.4	40.26	-1.1	-11.73
FULL-TIME EMPLOYED	15,715.0	129.8	0.83	-263.2	-1.65
Males	9,450.8	6.6	0.07	-315.2	-3.23
Females	6,264.2	123.2	2.01	52.0	0.84
PART-TIME EMPLOYED	2,588.0	21.6	0.84	89.4	3.58
Males	616.0	1.3	0.21	48.1	8.48
Females	1,972.0	20.3	1.04	41.3	2.14

6. Unemployed by sex, age group, and economic sector

BOTH SEXES	4,833.7	-76.5	-1.56	188.2	4.05
16 to 19 years	219.0	4.4	2.04	-36.9	-14.40
20 to 24 years	667.6	15.0	2.30	52.3	8.51
25 to 54 years	3,567.4	-94.9	-2.59	154.1	4.51
55 and over	379.7	-0.9	-0.25	18.6	5.15
MALES	2,608.1	-26.9	-1.02	70.2	2.76
16 to 19 years	123.9	1.1	0.93	-22.3	-15.27
20 to 24 years	364.5	5.3	1.47	18.1	5.23
25 to 54 years	1,888.5	-34.8	-1.81	71.4	3.93
55 and over	231.3	1.5	0.66	3.0	1.31
FEMALES	2,225.6	-49.6	-2.18	118.0	5.60
16 to 19 years	95.1	3.2	3.51	-14.5	-13.25
20 to 24 years	303.1	9.8	3.32	34.2	12.73
25 to 54 years	1,678.9	-60.1	-3.46	82.7	5.18
55 and over	148.4	-2.5	-1.63	15.6	11.76
TOTAL UNEMPLOYED	4,833.7	-76.5	-1.56	188.2	4.05
Agriculture	244.6	18.3	8.10	9.0	3.81
Industry	241.2	-11.9	-4.68	-25.7	-9.63
Construction	429.5	-12.9	-2.91	-98.1	-18.60
Services	1,431.7	-73.8	-4.90	-11.1	-0.77
Lost their job more than 1 year ago	2,076.6	-32.7	-1.55	265.8	14.68
First job seekers	410.1	36.4	9.74	48.3	13.35

National results

(Conclusion)

	Current quarter	Variation on previous quarter		Variation on same quarter, previous year	
		Difference	Percentage	Difference	Percentage

7. Unemployment rate by relationship with the reference person

	Current quarter	Difference	Percentage	Difference	Percentage
TOTAL	20.89	-0.40	-	0.80	-
Reference person	17.02	-0.53	-	0.42	-
Spouse or partner	17.40	-0.54	-	0.59	-
Child	34.87	-0.15	-	2.76	-
Other relatives	31.00	0.53	-	3.19	-
Unrelated persons	14.11	-0.53	-	-5.76	-

8. Household data

	Current quarter	Difference	Percentage	Difference	Percentage
TOTAL HOUSEHOLDS	17,329.5	48.3	0.28	201.7	1.18
Households with at least one active membr	12,990.8	39.8	0.31	87.2	0.68
- All member employed	9,161.1	95.0	1.05	-14.4	-0.16
- All member unemployed	1,367.5	-18.5	-1.34	59.2	4.52
Households without any active population	4,338.7	8.5	0.20	114.5	2.71

Mobility according to activity in current and previous quarter

Classification in previous quarter	Classification in current quarter			
	Total	Employed	Unemployed	Inactive
BOTH SEXES				
Total	100.00	100.00	100.00	100.00
Employed	46.99	92.49	15.83	2.90
Unemployed	12.12	5.14	66.55	4.26
Inactive	40.89	2.37	17.62	92.84
MALES				
Total	100.00	100.00	100.00	100.00
Employed	53.56	93.28	18.18	3.07
Unemployed	13.15	5.07	68.50	4.25
Inactive	33.30	1.65	13.32	92.68
FEMALES				
Total	100.00	100.00	100.00	100.00
Employed	40.76	91.52	13.12	2.79
Unemployed	11.15	5.23	64.29	4.26
Inactive	48.10	3.25	22.59	92.94

Grossing up factors of current quarter (forward analysis)

Results by Autonomous Communities

(Continues)

	Current quarter	Variation on previous quarter		Variation on same quarter, previous year	
		Difference	Percentage	Difference	Percentage
1. Population aged 16 years and over					
TOTAL	38,481.2	-30.8	-0.08	13.4	0.03
Andalucía	6,781.8	2.4	0.04	25.2	0.37
Aragón	1,110.3	-0.5	-0.04	-0.7	-0.06
Asturias, Principado de	927.5	-0.9	-0.10	-4.1	-0.44
Balears, Illes	902.0	2.7	0.30	9.5	1.07
Canarias	1,756.3	3.4	0.19	14.5	0.83
Cantabria	493.7	-0.5	-0.09	-1.5	-0.30
Castilla y León	2,139.3	-4.6	-0.21	-10.5	-0.49
Castilla-La Mancha	1,702.9	-2.2	-0.13	4.9	0.29
Cataluña	6,052.3	-15.9	-0.26	-20.6	-0.34
Comunitat Valenciana	4,169.2	-5.3	-0.13	3.7	0.09
Extremadura	907.8	0.0	0.00	1.5	0.17
Galicia	2,377.5	-3.0	-0.13	-5.7	-0.24
Madrid, Comunidad de	5,267.4	0.5	0.01	4.8	0.09
Murcia, Región de	1,190.1	1.3	0.11	3.1	0.26
Navarra, Comunidad Foral de	513.6	0.2	0.04	0.8	0.16
País Vasco	1,811.2	-9.1	-0.50	-11.0	-0.60
Rioja, La	262.1	-0.4	-0.16	-2.3	-0.86
Ceuta	60.0	0.4	0.66	0.9	1.58
Melilla	56.3	0.4	0.75	0.9	1.69

2. Active population

TOTAL	23,136.7	74.9	0.32	14.4	0.06
Andalucía	3,967.7	-33.6	-0.84	-6.5	-0.16
Aragón	651.8	8.2	1.28	6.5	1.00
Asturias, Principado de	484.4	6.9	1.45	4.2	0.88
Balears, Illes	593.0	24.9	4.39	-12.3	-2.03
Canarias	1,114.7	19.4	1.77	38.4	3.56
Cantabria	276.9	3.2	1.15	-3.2	-1.15
Castilla y León	1,184.0	6.6	0.56	-5.1	-0.43
Castilla-La Mancha	1,002.8	11.2	1.13	21.4	2.18
Cataluña	3,826.3	-0.8	-0.02	8.6	0.23
Comunitat Valenciana	2,500.7	13.4	0.54	-24.0	-0.95
Extremadura	496.2	-2.4	-0.48	-4.7	-0.93
Galicia	1,310.9	3.8	0.29	15.5	1.20
Madrid, Comunidad de	3,411.6	28.0	0.83	-20.6	-0.60
Murcia, Región de	734.3	0.1	0.01	-0.4	-0.05
Navarra, Comunidad Foral de	310.1	-1.2	-0.39	-1.3	-0.42
País Vasco	1,052.3	-10.7	-1.00	-3.2	-0.31
Rioja, La	155.3	-0.8	-0.54	-1.6	-1.00
Ceuta	33.2	0.2	0.71	0.4	1.11
Melilla	30.5	-1.5	-4.58	2.3	8.07

* Data below 5000 are subject to strong variations, due to sampling error

Results by Autonomous Communities

(Conclusion)

	Current quarter	Variation on previous quarter		Variation on same quarter, previous year	
		Difference	Percentage	Difference	Percentage
3. Employed					
TOTAL	18,303.0	151.4	0.83	-173.8	-0.94
Andalucía	2,788.9	-24.9	-0.89	-81.3	-2.83
Aragón	538.2	10.2	1.93	-15.5	-2.80
Asturias, Principado de	401.3	10.7	2.75	-0.2	-0.05
Balears, Illes	477.5	53.5	12.61	-7.1	-1.47
Canarias	782.9	0.0	0.00	23.9	3.15
Cantabria	236.0	7.1	3.09	-5.2	-2.16
Castilla y León	990.7	17.8	1.82	-4.4	-0.44
Castilla-La Mancha	772.0	-3.5	-0.45	0.1	0.02
Cataluña	3,135.4	36.0	1.16	-6.1	-0.19
Comunitat Valenciana	1,909.4	22.0	1.16	-13.6	-0.71
Extremadura	381.4	7.7	2.07	-7.1	-1.83
Galicia	1,091.4	10.7	0.99	-2.3	-0.21
Madrid, Comunidad de	2,866.7	5.1	0.18	-1.8	-0.06
Murcia, Región de	554.4	12.3	2.27	-24.0	-4.14
Navarra, Comunidad Foral de	270.3	0.6	0.24	-7.0	-2.53
País Vasco	929.9	-9.6	-1.02	-15.8	-1.67
Rioja, La	129.7	-2.4	-1.78	-8.1	-5.85
Ceuta	23.7	-0.6	-2.45	-0.4	-1.58
Melilla	23.4	-1.4	-5.73	2.1	9.68

4. Unemployed

TOTAL	4,833.7	-76.5	-1.56	188.2	4.05
Andalucía	1,178.9	-8.7	-0.73	74.8	6.78
Aragón	113.6	-1.9	-1.69	22.0	23.96
Asturias, Principado de	83.1	-3.8	-4.37	4.4	5.63
Balears, Illes	115.5	-28.5	-19.81	-5.1	-4.26
Canarias	331.8	19.4	6.20	14.5	4.56
Cantabria	40.9	-3.9	-8.75	2.0	5.10
Castilla y León	193.3	-11.2	-5.48	-0.7	-0.36
Castilla-La Mancha	230.8	14.7	6.81	21.2	10.13
Cataluña	690.9	-36.8	-5.05	14.8	2.18
Comunitat Valenciana	591.3	-8.6	-1.43	-10.4	-1.73
Extremadura	114.8	-10.2	-8.13	2.5	2.19
Galicia	219.6	-6.9	-3.07	17.8	8.82
Madrid, Comunidad de	544.9	22.9	4.38	-18.8	-3.33
Murcia, Región de	179.8	-12.3	-6.38	23.6	15.09
Navarra, Comunidad Foral de	39.8	-1.9	-4.48	5.7	16.72
País Vasco	122.4	-1.1	-0.86	12.6	11.46
Rioja, La	25.6	1.5	6.24	6.5	33.89
Ceuta	9.5	0.8	9.48	0.7	8.49
Melilla	7.2	0.0	-0.60	0.2	3.15

* Data below 5,000 are subject to strong variations, due to sampling error

Results by Autonomous Communities

(Absolute figures in thousands and rates in percentage)

5. Employed and unemployed by sex. Activity and unemployment rates

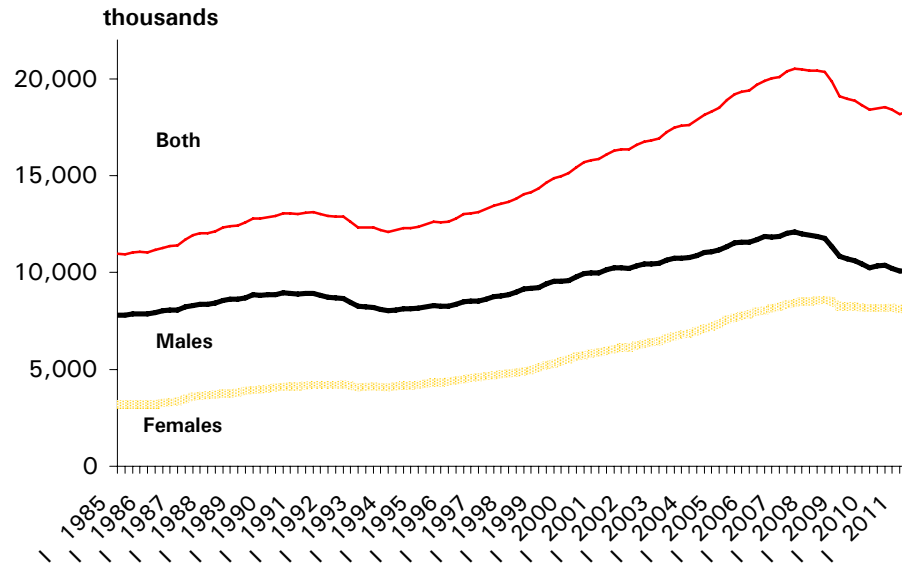
	Both sexes				Males				Females			
	Employed	Unemployed	Activity rate	Unem. rate	Employed	Unemployed	Activity rate	Unem. Rate	Employed	Unemployed	Activity rate	Unem. Rate
TOTAL	18,303.0	4,833.7	60.12	20.89	10,066.8	2,608.1	67.44	20.58	8,236.2	2,225.6	53.14	21.27
Andalucía	2,788.9	1,178.9	58.51	29.71	1,602.1	633.0	67.09	28.32	1,186.7	545.9	50.22	31.51
Aragón	538.2	113.6	58.70	17.42	302.4	61.1	66.31	16.81	235.8	52.5	51.29	18.20
Asturias, Principado de	401.3	83.1	52.22	17.15	212.4	45.8	58.77	17.75	188.9	37.2	46.33	16.47
Balears, Illes	477.5	115.5	65.75	19.48	257.8	65.3	71.95	20.22	219.7	50.2	59.60	18.60
Canarias	782.9	331.8	63.47	29.76	425.0	181.6	69.72	29.94	357.9	150.2	57.33	29.56
Cantabria	236.0	40.9	56.10	14.77	128.0	24.8	63.93	16.21	108.0	16.2	48.75	13.00
Castilla y León	990.7	193.3	55.34	16.33	564.9	100.1	63.15	15.06	425.7	93.2	47.77	17.96
Castilla-La Mancha	772.0	230.8	58.89	23.01	459.3	118.2	67.66	20.46	312.7	112.6	50.08	26.48
Cataluña	3,135.4	690.9	63.22	18.06	1,670.6	380.6	69.66	18.56	1,464.8	310.3	57.12	17.48
Comunitat Valenciana	1,909.4	591.3	59.98	23.65	1,060.0	321.1	67.19	23.25	849.4	270.2	52.97	24.14
Extremadura	381.4	114.8	54.66	23.14	228.3	59.4	64.24	20.65	153.1	55.4	45.33	26.56
Galicia	1,091.4	219.6	55.14	16.75	588.4	111.7	61.65	15.95	503.0	107.9	49.19	17.66
Madrid, Comunidad de	2,866.7	544.9	64.77	15.97	1,502.2	298.4	71.56	16.57	1,364.5	246.5	58.56	15.30
Murcia, Región de	554.4	179.8	61.70	24.49	317.5	102.8	70.14	24.47	236.9	77.0	53.13	24.53
Navarra, Comunidad Foral de	270.3	39.8	60.38	12.85	148.6	21.2	66.90	12.48	121.7	18.6	54.00	13.29
País Vasco	929.9	122.4	58.10	11.63	497.8	60.5	64.09	10.84	432.1	61.9	52.55	12.53
Rioja, La	129.7	25.6	59.26	16.49	72.0	14.0	66.45	16.30	57.7	11.6	52.25	16.73
Ceuta	23.7	9.5	55.36	28.73	15.5	4.7	66.50	23.24	8.1	4.8	43.90	37.29
Melilla	23.4	7.2	54.26	23.42	14.1	3.8	65.37	21.18	9.3	3.4	43.76	26.57

* Data below 5,000 are subject to strong variations, due to sampling errors

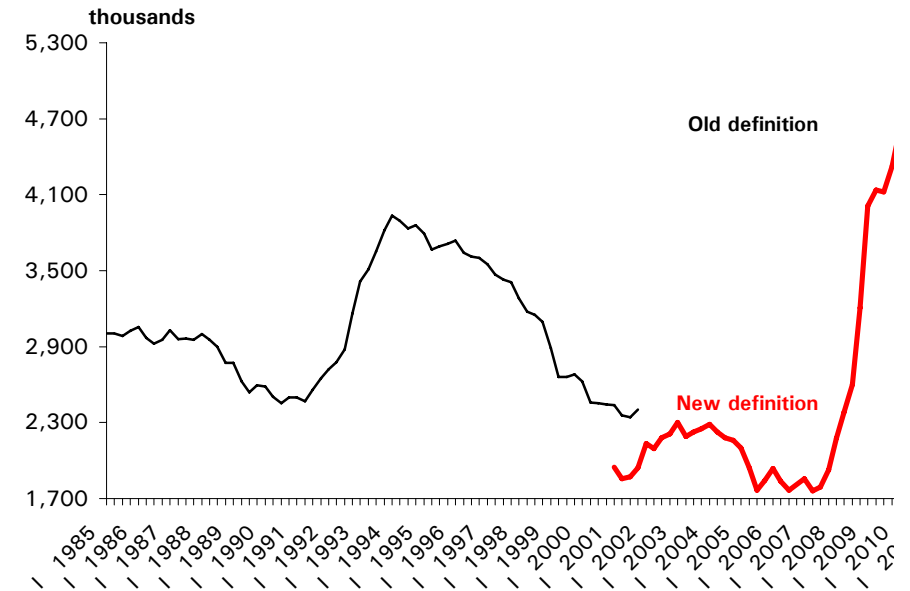
Employed and unemployed by sex

APS Second Quarter 2011

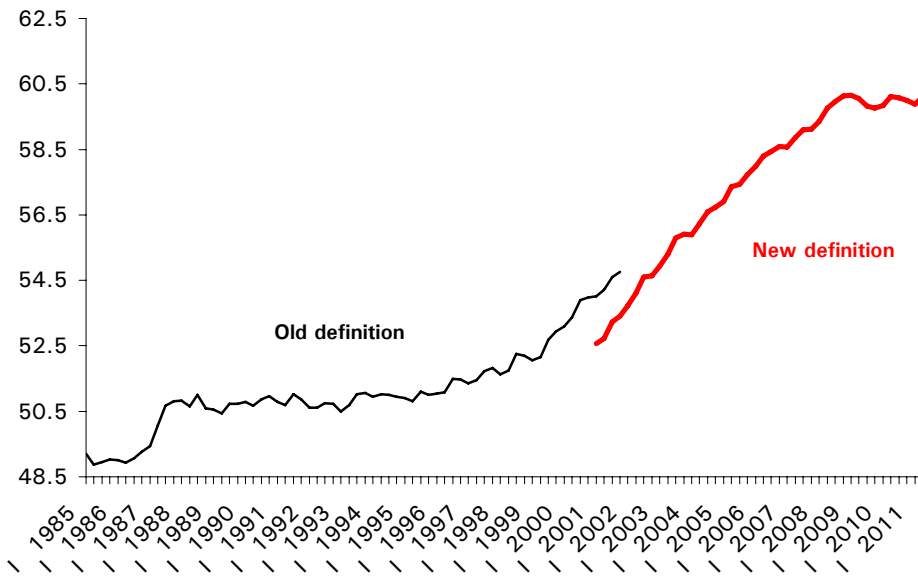
Employment



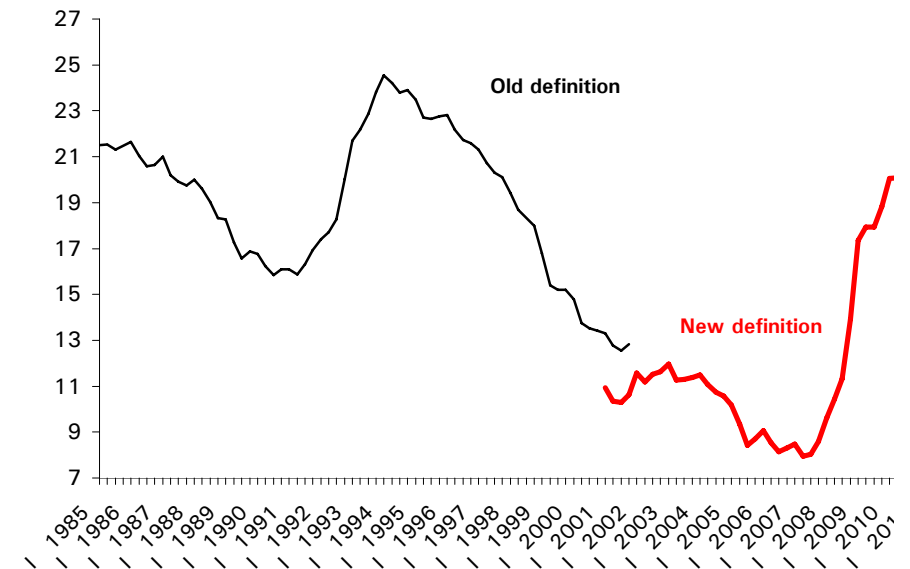
Unemployment



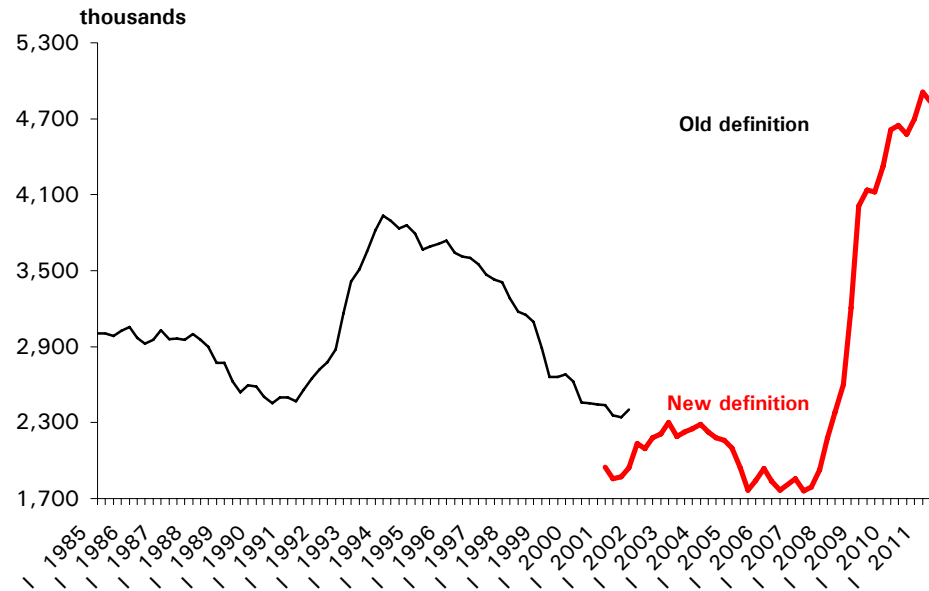
Activity rate



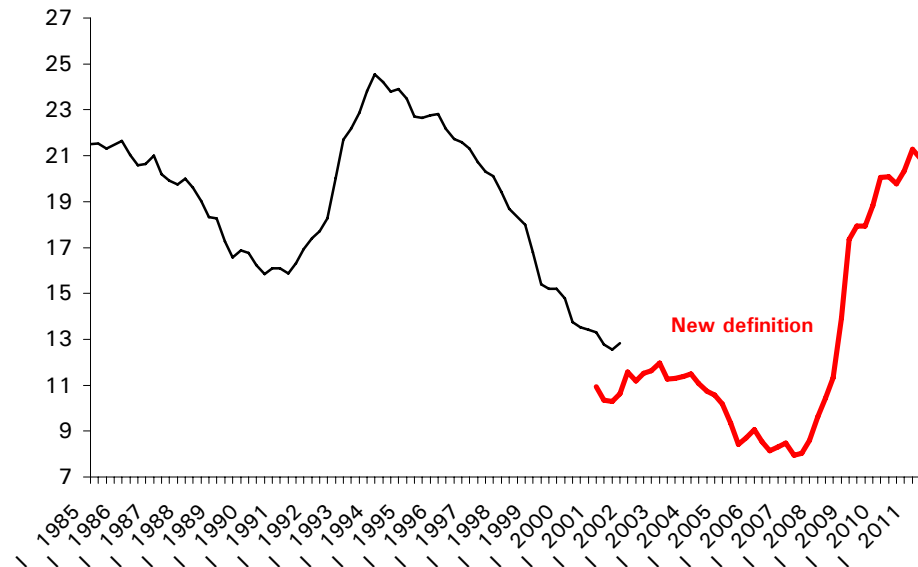
Unemployment rate



Unemployment



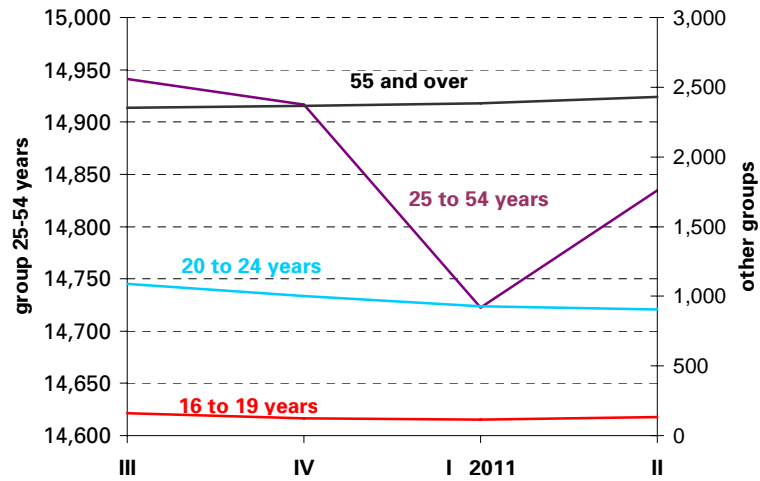
Unemployment rate



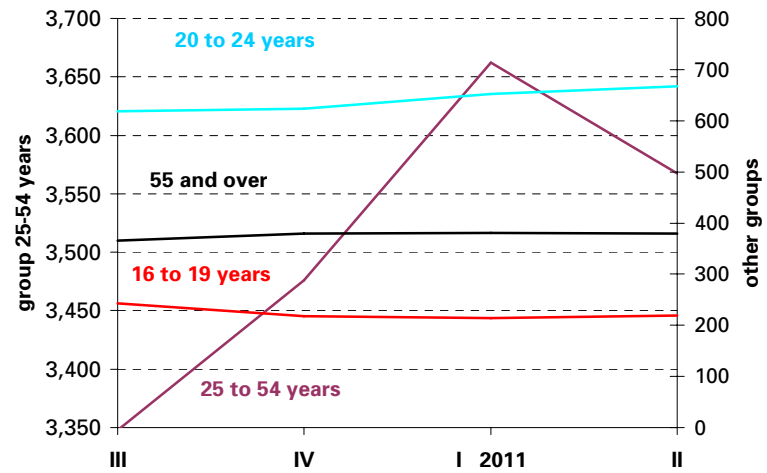
Employed and Unemployed by age

APS Second Quarter 2011

Employment (thousands)

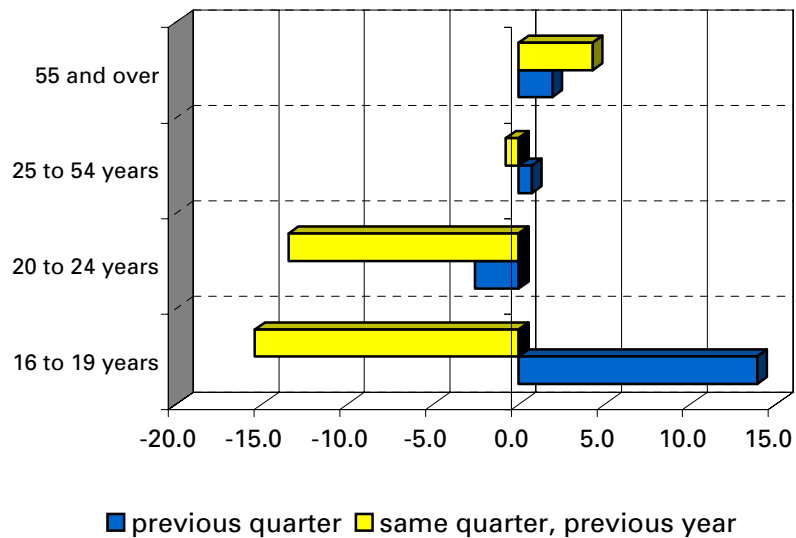


Unemployment (thousands)

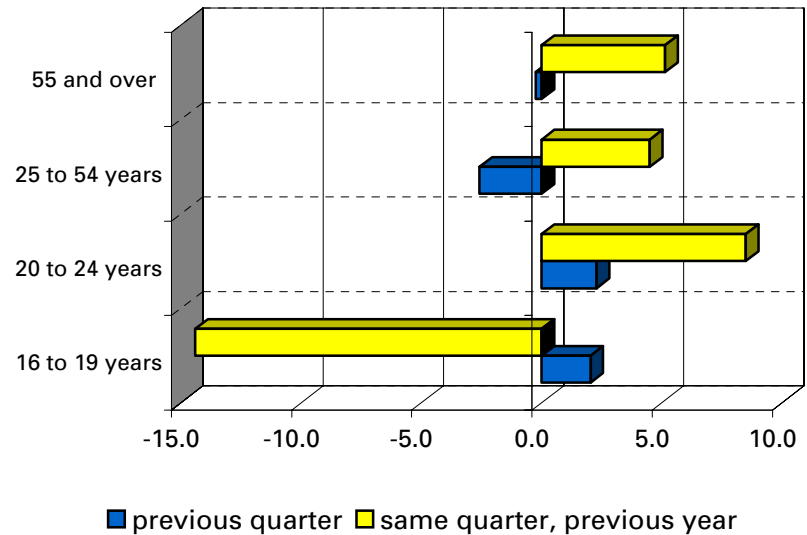


Variation percentages over the previous quarter and over the same quarter of the previous year

Employment

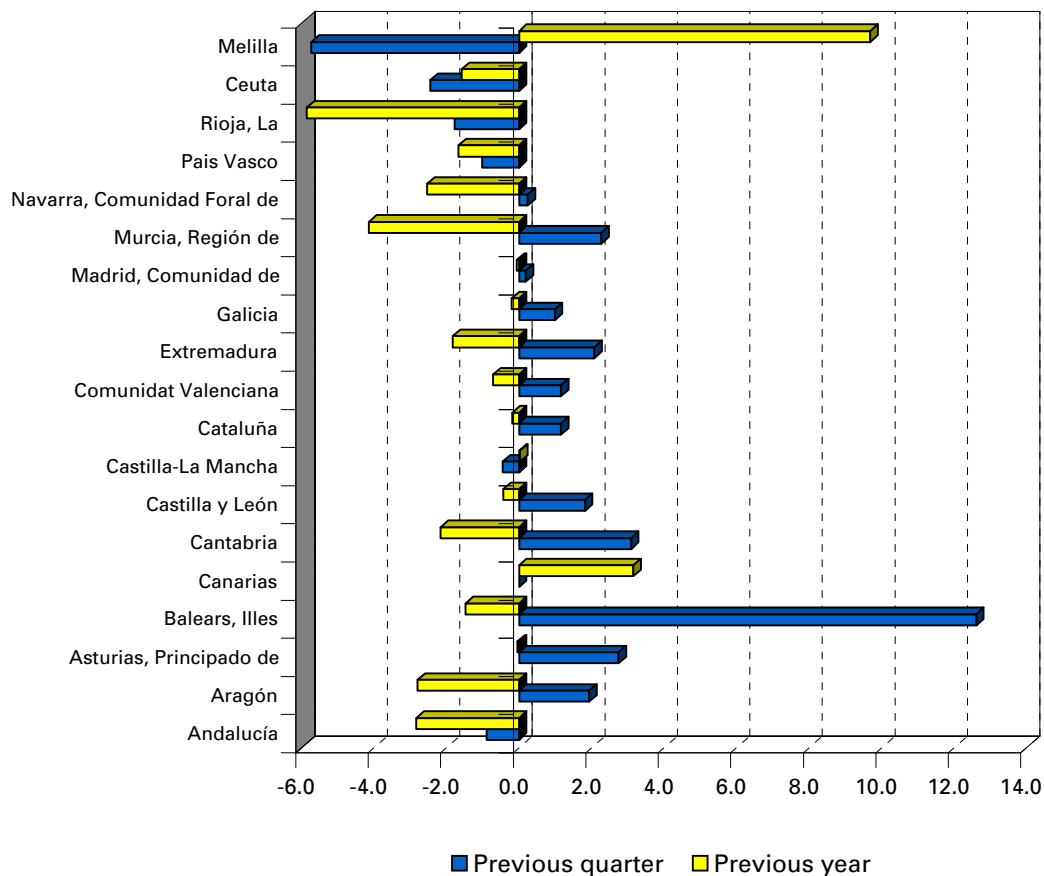


Unemployment



Employment variation percentages over the previous quarter and over the same quarter of the previous year

Second Quarter 2011



Unemployment rate (Spain = 20.89)

