

25 July 2013

Economically Active Population Survey (EAPS)

Second quarter of 2013

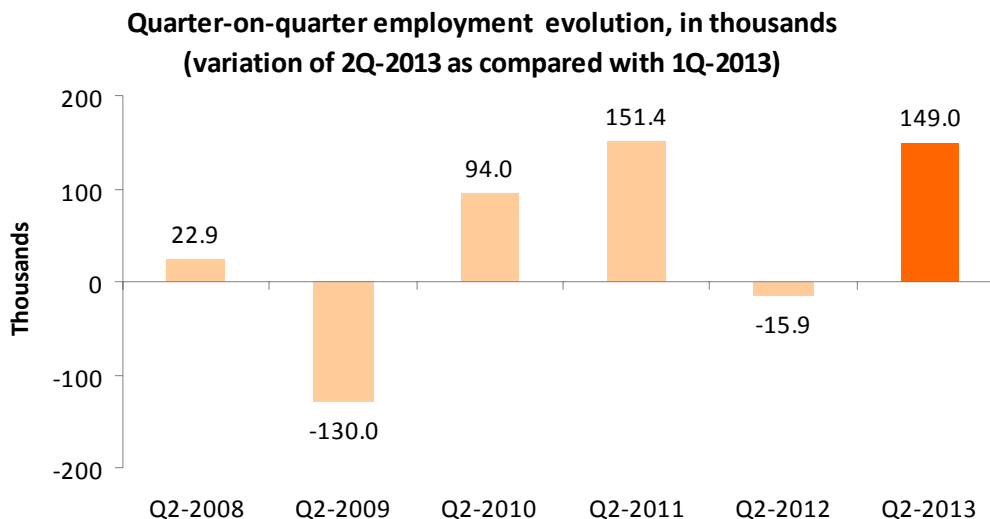
Main results

- Employment in the second quarter of 2013 registers an increase of 149,000 persons, reaching a total of 16,783,800 employed persons. The quarterly employment variation rate stands at 0.90% and the annual rate stands at -3.64%. Employment increases mainly in the private employment and it remains the same in public employment.
- The number of self-employed workers increases by 37,300 and that of wage earners by 111,900. The number of employers increases by 14,400 and that of the independent workers or businesspersons without wage earners increases by 13,900 this quarter. The total number of wage earners with a permanent contract decreases by 50,400, and wage earners with a temporary contract increase by 162,200.
- Employment increases by 154,800 persons in *Services*, by 37,500 in *Agriculture*. In turn, it decreases in *Construction* by 26,500 and in *Industry* by 16,800.
- The Autonomous Communities with the greatest increases in employment, as compared with the previous quarter, are: Illes Balears (68,100 more employed persons), Andalucía (61,700). The greatest decreases are registered in Comunidad de Madrid (19,400 less) and Canarias (9,000).
- Extremadura and Illes Balears register an increase in the interannual variation rate for employment (2.99% and 1.92%, respectively). In turn, the greatest decreases are registered in Cantabria (-8.06%), Principado de Asturias (-6.66%) and Aragón (-6.65%).
- The number of unemployed persons decreases by 225,200 and reaches the figure of 5,977,500. The unemployment rate decreases 0.9 points, standing at 26,26%. Among the foreign nationals, the number of unemployed persons decreases by 145,400.
- The decreases in unemployment affect nearly all the Autonomous Communities. The greatest decreases are registered in Comunidad de Madrid (39,400 less unemployed persons), Illes Balears (38,300), Andalucía (33,300) and Cataluña (29,300).
- The number of economically active persons decreases by 76,100, indicating a total of 22,761,300 active persons and an activity rate of 59.54%. . Over the last year, the activity rate decreased more than one point.
- The greatest increase in the number of economically active persons is registered in Illes Balears (29,700 more) and Andalucía (28,400). The greatest decrease is registered in Comunidad de Madrid (58,800) and Canarias (23,200).

Employment

The number of employed persons increased by 149,000 persons in the second quarter of 2013, standing at 16,783,800. The quarterly variation rate of employment stood at 0.90%.

The quarterly increase of the employment rate was similar to the one registered in the second quarter of 2011.

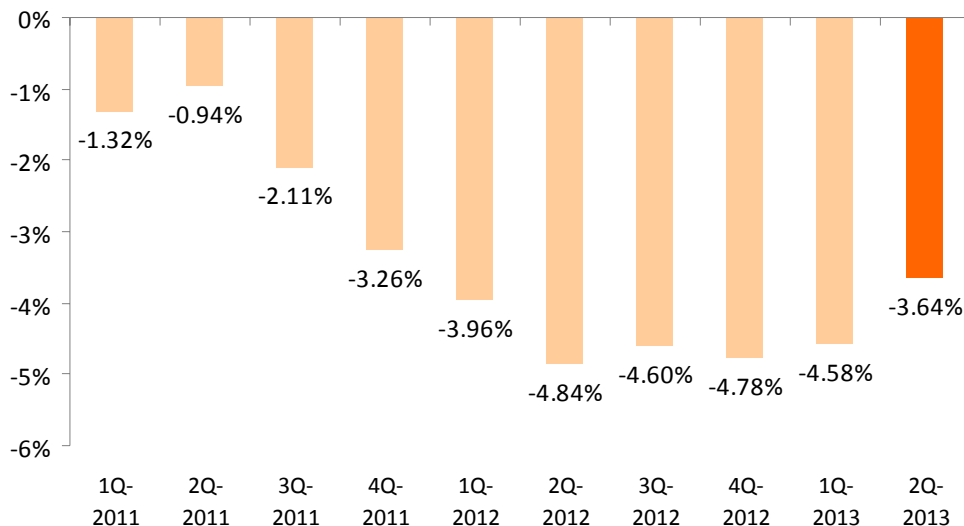


By sex, the increase in employment was greater among men (107,400) than among women (41,600). By nationality, employment increased by 86,100 among the Spaniards and by 63,900 among the foreign nationals.

The increase in employment affected practically every age group, especially that aged over 39 years old (119,300 more employed persons).

In the last 12 months, employment has dropped by 633,500 persons, (352,200 men and 281,300 women). The annual variation rate of employment was -3.64% , 94 hundredths higher, as compared with the previous quarter.

Total evolution of employed persons, as an annual rate



This quarter, the number of employed persons increased in *Services* by 154,800 and in *Agriculture* by 37,500. In turn, it decreased in *Construction* by 26,500 and in *Industry* by 16,800.

Full-time employment increased by 56,400 persons this quarter, whilst part-time employed persons increased by 92,600. The percentage of persons working part time increased 41 hundredths, reaching 16.41%.

The number of self-employed workers increased by 37,300 persons the second quarter of 2013. Employers increased by 14,400 and businesspersons without wage earners or independent workers or independent workers increased by 13,900.

The number of wage earners increased by 111,900. Those with a permanent contract decreased by 50,400, and those wage earners with temporary contracts did so by 162,200. The temporary employment rate increased one point, standing at 23.12%.

The number of wage earners dropped by 672,800 over the last 12 months, whereas the number of self-employed workers increased by 37,100.

Private employment¹ increased by 151,600 persons this quarter, and stood at 13,940,500. In turn, public employment remained practically unaltered, with a decreased of 2,600 persons.

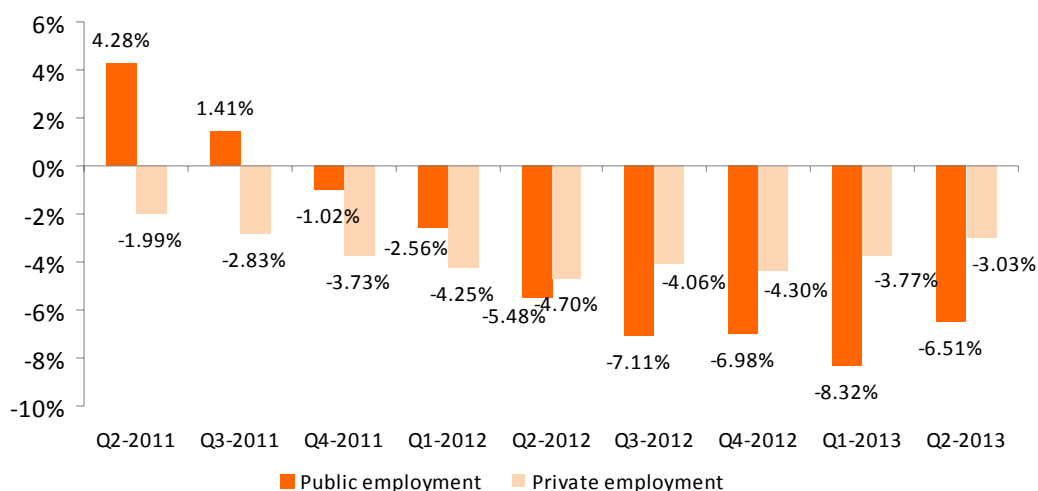
¹ Employment in the private sector includes: wage earners from the private sector, employers, independent workers and businesspersons without wage earners, members of a cooperative, family assistance and other professional situations. Employment in the public sector includes all the wage earners of public enterprises and of the National and Regional Administrations, including both workers contributing to the SS and those attached to an Insurance society.

Quarter-on-quarter employment evolution by nature of the employer, in thousands (variation of 2Q-2013, as compared with 1Q-2013)



Both public and private employment showed negative annual variations. Public employment registered a -6.51% rate, while employment decreased at a rate of 3.03% in the private sector.

Employment evolution by nature of the employer, as an annual rate

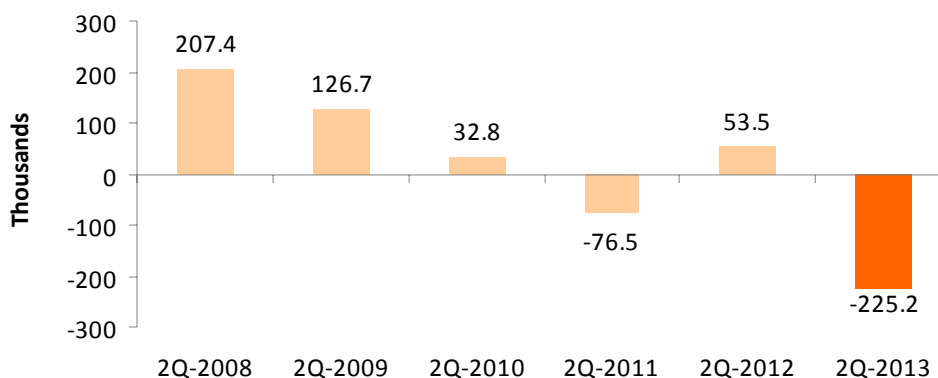


Unemployment and unemployment rate

Unemployment decreased by 225,200 persons this quarter, standing at 5,977,500. Over the last year, the total figure of unemployed persons increased by 284,500 persons.

Comparing the evolution of unemployment this quarter to the same period in previous years, it is worth noting that the quarterly decrease of unemployment was the highest since 2008.

**Quarter-on-quarter unemployment evolution, in thousands
(variation of the 2Q-2013, as compared with 1Q-2013)**



The unemployment rate dropped nine tenths, as compared with the first quarter, standing at 26.26%.

By sex, unemployment decreased by 161,900 among men and by 63,300 among women. The male unemployment rate decreased 1.2 points, reaching 25.58%, whilst the female rate decreased more than half a point, and stood at 27.06%. The composition of unemployment observed since the year 2008 remained practically unaltered, with relatively little distance between the male and female rates, and a greater number of unemployed men than unemployed women.

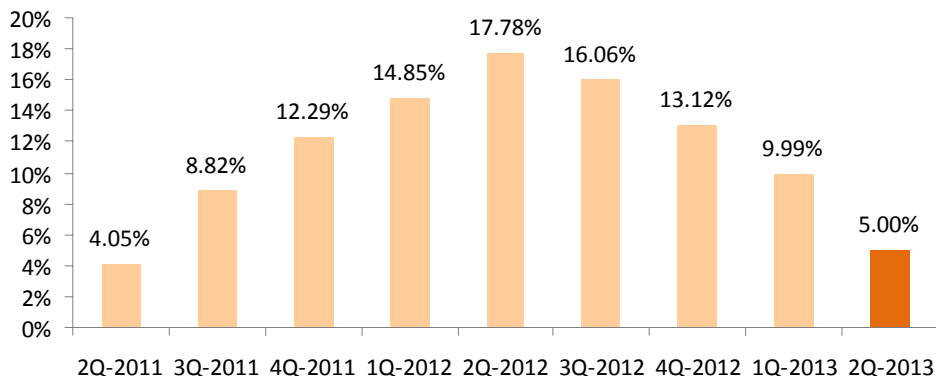
By nationality, unemployment decreased by 79,800 among the Spaniards and by 145,400 among the foreign nationals. The unemployment rate for the foreign population was 35.72%, 11 points higher than that of persons with Spanish nationality (24.69%).

Unemployment decreased in all sectors. In *Services* (157,900 fewer unemployed persons), *Industry* decreased by 37,500, *Construction* by 25,500 and *Agriculture* by 24,200. Unemployment increased among those persons seeking their first job (23,500 more) and it decreased among those who lost their job over a year ago (3,500).

The number of unemployed persons decreased in *Construction* (90,300 less), in *Industry* (40,100) and in *Agriculture* (8,700) in the last 12 months. In *Services*, this number remained practically unaltered. The unemployed persons who lost their job over a year ago increased by 404,800 and by 18,300 among those persons seeking their first job.

Regarding the annual evolution, the increasing unemployment rate (5.0%) registered a decrease of one-half, as compared with the previous quarter.

Total evolution of unemployed persons, as an annual rate

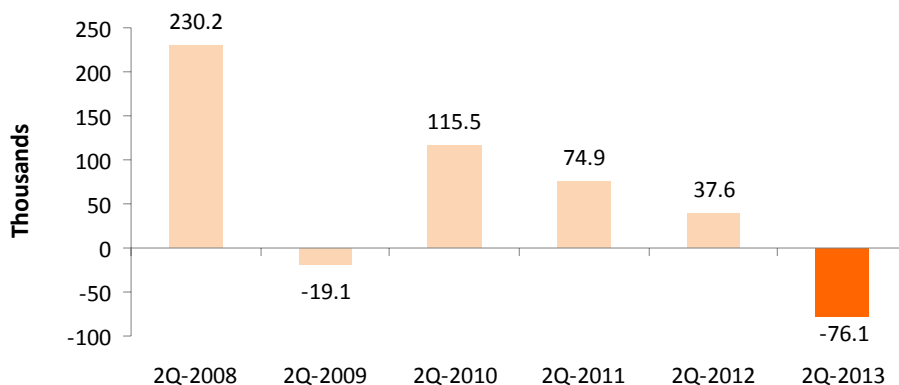


Economically active population and activity rate

The economically active population experienced a decrease of 76,100 persons in the second quarter of 2013, standing at 22,761,300 persons. In annual terms, the number of economically active persons was reduced by 349,10.

The decrease in the number of economically active persons in the second quarter of 2013 highlighted the downward trend observed in the second quarters since 2008.

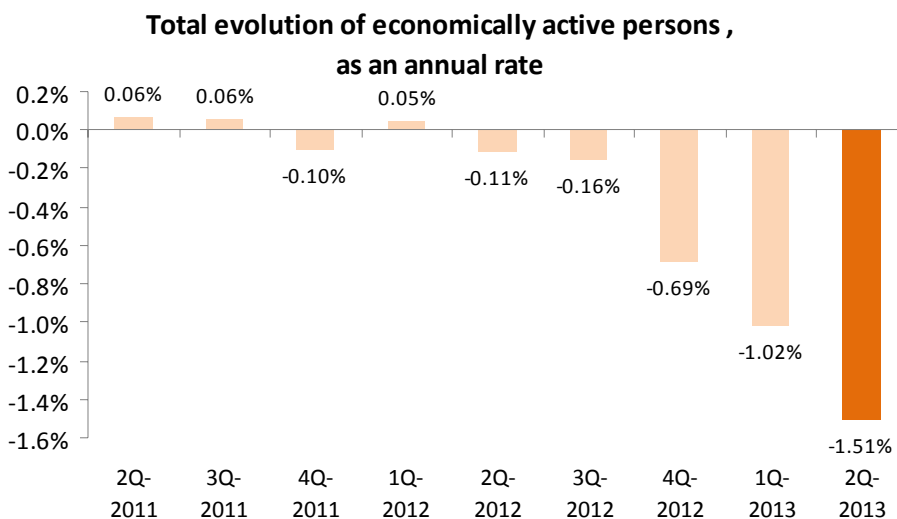
**Quarter-on-quarter activity evolution, in thousands
(variation of 2Q-2013, as compared with 1Q-2013)**



The economic activity rate decreased 13 hundredths, reaching 59.54%. The female activity rate decreased 7 tenths (53.32%), while the male rate decreased by 19 hundredths and stood at 66.12%.

The activity rate of Spaniards increased six tenths this quarter, reaching 57.71%. That of foreign nationals decreased by 1.5 points, standing at 73.68%. The distance between both rates is nearly 16 points in favour of foreign nationals, this circumstance being explained by the different age structures of the two population groups.

The annual variation rate of economically active persons stressed the downward trend of the last quarter.



Mobility as related to economic activity

The percentage of employed persons who were unemployed in the previous quarter was now 5.37%, 1.15 points more than that recorded in the first quarter of 2013.

The proportion of unemployed persons who were employed three months ago decreased by nearly 3 points, reaching 10.98%. The percentage of unemployed persons who were already unemployed three months ago increased 2.79 points, standing at 74.22%. The percentage of unemployed persons who were unemployed three months ago increased 17 hundredths, reaching 14.81%.

Households

In the second quarter, there were 17,440,800 households in Spain, experiencing an increase of 49,300, as compared with the first quarter 2012.

The number of households in which all economically active members were unemployed, decreased by 84,900, standing at 1,821,100.

The number of households in which all of the economically active members were employed increased by 122,500, reaching 8,266,400.

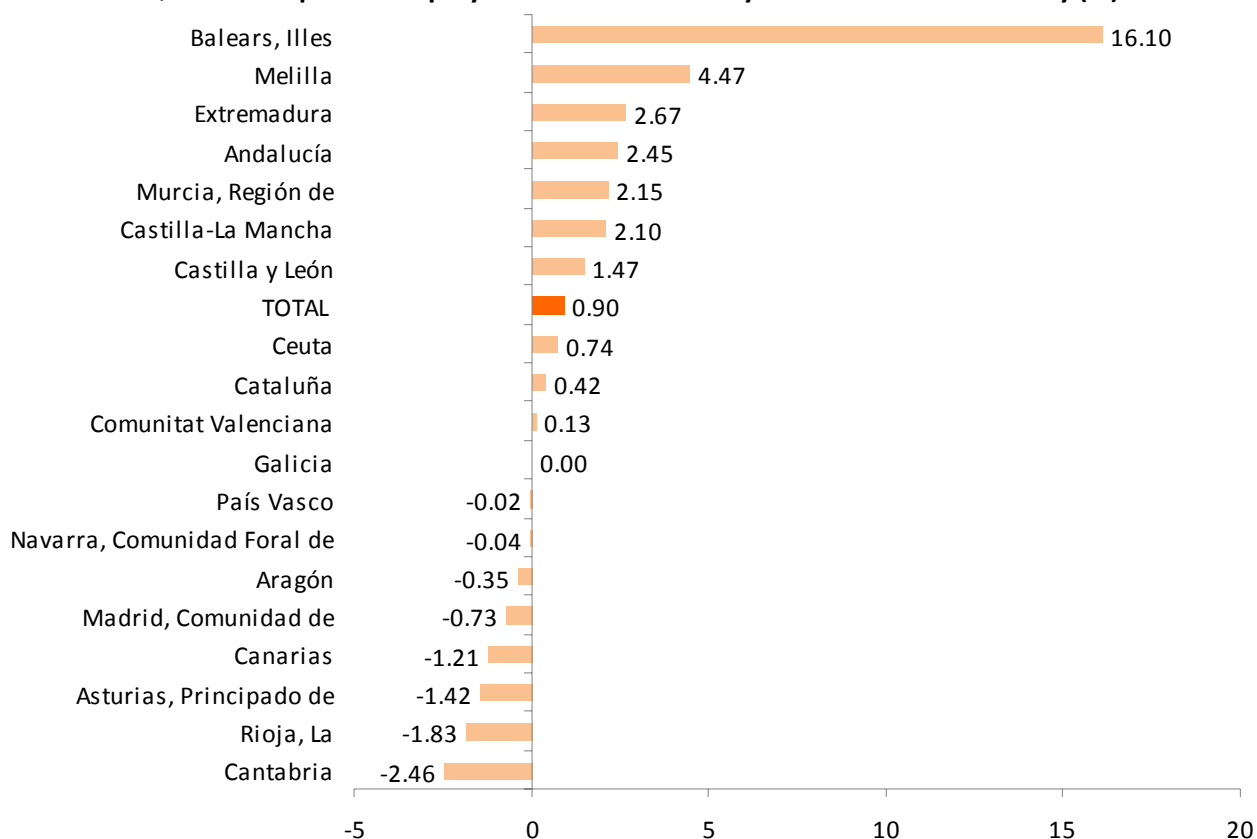
In an interannual comparison, the number of households in which all economically active persons were unemployed increased by 83,500, and the number of those in which all economically active members were employed decreased by 314,100.

Results by Autonomous Community

Most part of the Autonomous Communities registered increases in employment this quarter. Those registering the greatest increases were Illes Balears (68,100 more employed persons) and Andalucía (61,700). The greatest decreases were registered in Comunidad de Madrid (19,400 less) and Canarias (9,000).

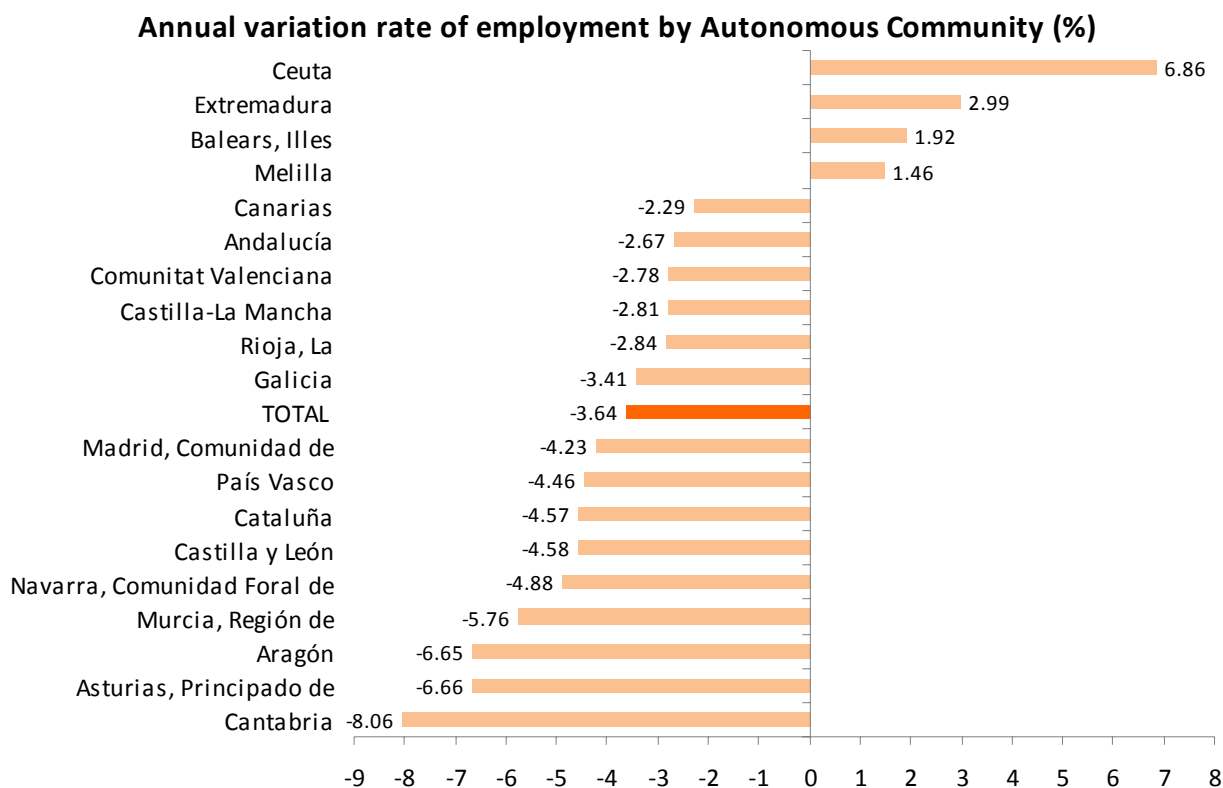
In relative terms, the Autonomous Communities with a favourable quarterly employment evolution were Illes Balears (16.10% more), Extremadura (2.67%) and Andalucía (2.45%). Those registering a greater decrease in employment were Cantabria (-2.46%), La Rioja (-1.83%) and Principado de Asturias (-1.42%).

Quarter-on-quarter employment variation rate by Autonomous Community (%)



During the last year, the Autonomous Communities registering an increase in employment were Extremadura (9,800 more) and Illes Balears (9,200). In turn, the greatest decreases in employment during the last 12 months were registered in Cataluña (133,400 fewer employed persons), Comunidad de Madrid (117,000) and Andalucía (70,800).

Extremadura (2.99%) and Illes Balears (1.92%) are the only Autonomous Communities with a positive employment interannual variation rate. In turn, Cantabria (-8.06%), Principado de Asturias (-6.66%) and Aragón (-6.65%) registered the greatest decreases in the interannual rate drops in employment.



Practically all Autonomous Communities registered decreases in the number of unemployed persons this quarter. The greatest decreases of unemployment were registered in Comunidad de Madrid (39,400 less), Illes Balears (38,300), Andalucía (33,300) and Cataluña (29,300).

As for the annual variation rate, unemployment decreases in La Rioja by 4,800. The greatest increases of unemployment were registered in Andalucía (77,500 unemployed persons more), Cataluña (51,400) and Comunitat Valenciana (48,300).

País Vasco maintained the lowest unemployment rate in Spain (15.46%). At the other end of the spectrum, Andalucía registered a 35.79% rate.

The greatest increases of economically active persons in the second quarter were registered in Illes Balears (29,700 more) and Andalucía (28,400). In turn, the greatest decreases were registered in Comunidad de Madrid (58,800 less) and Canarias (23,200).

In the last 12 months, the number of economically active persons decreased by 117,700 persons in Comunidad de Madrid, by 81,900 in Cataluña, by 35,700 in País Vasco and by 32,700 in Castilla y León. During this period, the greatest increases in the number of economically active persons were registered in Extremadura (17,100 more) and in Illes Balears (9,800).

The economic activity rates this quarter ranged between the 67,78% recorded in Illes Balears, and the 51,69% registered in Principado de Asturias.

Results by province

The provincial results summary of the EAPS may be accessed via the following link:

http://www.ine.es/en/daco/daco42/daco4211/epapro0213_en.pdf

All of the provincial information from this survey may be accessed via the following links:

- In the INEbase database
<http://www.ine.es/jaxiBD/menu.do?L=1&divi=EPA&his=0&type=db>
- In the TEMPUS database
<http://www.ine.es/GSTConsul/loginAction.do?U=S0&language=1&divi=EPA>

Seasonally adjusted series

In order to contribute to a better interpretation of the EAPS results from a short-term point of view, in line with the rest of short-term statistics, it is available for the labour market analysts the quarterly evolution of the main seasonally adjusted variables.

http://www.ine.es/en/daco/daco42/daco4211/epadesestacional0213_en.pdf

Methodological note

General features

The Economically Active Population Survey (EAPS) is a continuous sample-based study aimed at family dwellings, and which has been conducted since 1964.

The additional sample collected by the *Galician Statistics Institute* (IGE) has been incorporated as of the third quarter of 2009, using the same fieldwork system and identical methodology to that of the INE. Therefore, apart from the 3,588 census sections that have made up the sample for the whole of Spain since 2005, we must take into account the 234 additional sections in the Autonomous Community of Galicia. Since the third quarter of 2009, the EAPS sample is made up of 3,822 census sections from the more than 30,000 census sections into which Spain is divided. An average of 18 households are surveyed in each one, except in the provinces of Barcelona, Madrid, Sevilla, Valencia and Zaragoza, where the number of households surveyed is 22. Thus, the sample size is approximately 65,000 dwellings, providing information on some 180,000 persons. The data is collected via personal and telephone interviews. The information is carefully filtered and computer-processed. Results are obtained within the month following the end of the reference quarter for the data.

Main definitions

(Economically) Active persons: persons aged 16 years old and over who, during the reference week (the week prior to that when the interview is held), supplied labour for the production of goods and services, or were available to do so and in conditions to incorporate themselves into said production. They are divided into employed and unemployed persons.

Employed persons: persons aged 16 years old and over who, during the reference week, worked for at least one hour in exchange for payment (salary, wage, business benefit, etc.) in cash or in kind. Persons who, being employed, had been temporarily absent from their job due to illness, holidays, etc., are also considered employed persons.

Employed persons are classified, considering their professional status, as non-wage earners (employers, businesspersons without wage earners and independent workers, cooperative members, family assistance) and wage earners (public or private).

Considering the length of the working day, employed persons are classified as full-time and part-time employed persons. The usual working week may not be shorter than 30 hours in the first case, nor exceed 35 hours in the second.

Wage earners are classified as permanent and temporary. For the latter, the end of their contract or work relationship is set by means of objective conditions, such as the expiry of a certain period of time, the completion of a specific task, etc.

A significant category within employment is that of **time-related underemployment**, defined in the 16th International Labour Statisticians Conference (Geneva, 1998). The EAPS considers persons suffering time-related underemployment as employed persons who would like to work more hours, who are available to work more hours and whose effective working hours in the reference week are less than the number of hours usually worked by employed

persons working full-time in the same branch of activity as that in which the underemployed person develops his/her main job.

Unemployed persons: persons aged 16 years old and over who, during the reference week, were jobless, available for work, and actively looking for a job. Persons who might have already found a job and are waiting to start are also considered to be unemployed, provided that they meet the first two conditions.

According to European Commission Regulation 1897/2000, the following are considered to be active search methods, in the four weeks prior to the interview:

- Being in contact with a public employment office for the purpose of finding work, whatever part they play in the initiative (the renewal of registration due to purely administrative reasons does not constitute active planning).
- Being in contact with a private office (temporary employment agency, specialised hiring agency, etc.) with the objective of finding work.
- Having sent an application directly to employers.
- Having searched via personal relations and trade unions, etc.
- Having advertised oneself or responded to newspaper advertisements.
- Having studied job vacancies.
- Having taken part in a test, public exam or interview in the framework of a contracting procedure.
- Having looked for land, premises or material.
- Having taken steps to obtain permits, licences or financial resources.

(Economically) Inactive persons: persons aged 16 years old and over not included in any of the above categories.

Economically Active Population Survey Second Quarter 2013

National results

(Continues)

| | Current quarter | Variation on previous quarter | | Variation on same quarter, previous year | |
|--|--------------------|----------------------------------|------------|---|------------|
| | | Difference | Percentage | Difference | Percentage |
| | | | | | |
| 1. Population aged 16 years and over by sex and labour status | | | | | |
| BOTH SEXES | | | | | |
| Population aged 16 years and over | 38,226.3 | -43.2 | -0.11 | -241.0 | -0.63 |
| Active population | 22,761.3 | -76.1 | -0.33 | -349.1 | -1.51 |
| - Employed | 16,783.8 | 149.0 | 0.90 | -633.5 | -3.64 |
| - Unemployed | 5,977.5 | -225.2 | -3.63 | 284.5 | 5.00 |
| Inactive | 15,465.0 | 32.9 | 0.21 | 108.0 | 0.70 |
| Activity rate | 59.54 | -0.13 | - | -0.53 | - |
| Unemployment rate | 26.26 | -0.90 | - | 1.63 | - |
| Population aged 16 to 64 years | 30,169.3 | -73.9 | -0.24 | -372.0 | -1.22 |
| Activity rate (16-64) | 74.94 | -0.06 | - | -0.19 | - |
| Unemployment rate (16-64) | 26.41 | -0.90 | - | 1.62 | - |
| Employment rate (16-64) | 55.15 | 0.63 | - | -1.36 | - |
| MALES | | | | | |
| Population aged 16 years and over | 18,584.4 | -27.9 | -0.15 | -165.5 | -0.88 |
| Active population | 12,287.4 | -54.5 | -0.44 | -303.2 | -2.41 |
| - Employed | 9,144.5 | 107.4 | 1.19 | -352.2 | -3.71 |
| - Unemployed | 3,142.9 | -161.9 | -4.90 | 49.1 | 1.59 |
| Inactive | 6,297.0 | 26.6 | 0.42 | 137.6 | 2.23 |
| Activity rate | 66.12 | -0.19 | - | -1.03 | - |
| Unemployment rate | 25.58 | -1.20 | - | 1.01 | - |
| Population aged 16 to 64 years | 15,114.8 | -42.4 | -0.28 | -228.3 | -1.49 |
| Activity rate (16-64) | 80.73 | -0.11 | - | -0.72 | - |
| Unemployment rate (16-64) | 25.72 | -1.20 | - | 1.00 | - |
| Employment rate (16-64) | 59.97 | 0.89 | - | -1.35 | - |
| FEMALES | | | | | |
| Population aged 16 years and over | 19,641.9 | -15.4 | -0.08 | -75.5 | -0.38 |
| Active population | 10,473.9 | -21.7 | -0.21 | -45.9 | -0.44 |
| - Employed | 7,639.2 | 41.6 | 0.55 | -281.3 | -3.55 |
| - Unemployed | 2,834.7 | -63.3 | -2.18 | 235.4 | 9.06 |
| Inactive | 9,167.9 | 6.3 | 0.07 | -29.6 | -0.32 |
| Activity rate | 53.32 | -0.07 | - | -0.03 | - |
| Unemployment rate | 27.06 | -0.55 | - | 2.36 | - |
| Population aged 16 to 64 years | 15,054.4 | -31.5 | -0.21 | -143.7 | -0.95 |
| Activity rate (16-64) | 69.13 | -0.02 | - | 0.39 | - |
| Unemployment rate (16-64) | 27.22 | -0.55 | - | 2.36 | - |
| Employment rate (16-64) | 50.31 | 0.36 | - | -1.34 | - |

2. Spanish population⁽¹⁾ aged 16 years and over by labour status

| | | | | | |
|--|----------|-------|-------|--------|-------|
| SPANISH POPULATION AGED 16 YEARS AND OVER | 33,830.7 | -21.5 | -0.06 | -43.7 | -0.13 |
| Active population | 19,522.6 | 6.3 | 0.03 | -138.5 | -0.70 |
| - Employed | 14,702.0 | 86.1 | 0.59 | -499.4 | -3.29 |
| - Unemployed | 4,820.6 | -79.8 | -1.63 | 360.9 | 8.09 |
| Inactive | 14,308.2 | -27.8 | -0.19 | 94.7 | 0.67 |
| Activity rate | 57.71 | 0.06 | - | -0.33 | - |
| Unemployment rate | 24.69 | -0.42 | - | 2.01 | - |

⁽¹⁾ including dual nationality

July 25th 2013

National results

(Continuation)

| | Current quarter | Variation on previous quarter | | Variation on same quarter, previous year | |
|--|-----------------|-------------------------------|------------|--|------------|
| | | Difference | Percentage | Difference | Percentage |
| 3. Foreign population aged 16 years and over by labour status | | | | | |
| FOREIGN POPULATION AGED 16 YEARS AND OVER | 4,395.6 | -21.7 | -0.49 | -197.3 | -4.30 |
| Active population | 3,238.7 | -82.4 | -2.48 | -210.6 | -6.11 |
| - Employed | 2,081.8 | 62.9 | 3.12 | -134.2 | -6.05 |
| - Unemployed | 1,157.0 | -145.4 | -11.16 | -76.4 | -6.20 |
| Inactive | 1,156.8 | 60.8 | 5.54 | 13.3 | 1.16 |
| Activity rate | 73.68 | -1.50 | - | -1.42 | - |
| Unemployment rate | 35.72 | -3.49 | - | -0.04 | - |

4. Employed by sex, age group and economic sector

| | | | | | |
|----------------|----------|-------|-------|--------|--------|
| BOTH SEXES | 16,783.8 | 149.0 | 0.90 | -633.5 | -3.64 |
| 16 to 19 years | 74.5 | 9.3 | 14.31 | -11.3 | -13.13 |
| 20 to 24 years | 654.6 | 1.9 | 0.29 | -99.4 | -13.18 |
| 25 to 29 years | 1,574.0 | 2.6 | 0.16 | -206.0 | -11.58 |
| 30 to 34 years | 2,358.1 | 11.4 | 0.48 | -189.5 | -7.44 |
| 35 to 39 years | 2,728.2 | 4.6 | 0.17 | -72.4 | -2.58 |
| 40 to 44 years | 2,568.8 | 48.7 | 1.93 | -6.4 | -0.25 |
| 45 to 49 years | 2,355.2 | 20.7 | 0.89 | -32.6 | -1.36 |
| 50 to 54 years | 2,053.6 | 10.5 | 0.52 | 18.6 | 0.92 |
| 55 and over | 2,416.8 | 39.4 | 1.66 | -34.7 | -1.41 |
| MALES | 9,144.5 | 107.4 | 1.19 | -352.2 | -3.71 |
| 16 to 19 years | 50.8 | 11.0 | 27.77 | 1.4 | 2.87 |
| 20 to 24 years | 341.5 | 16.1 | 4.94 | -39.7 | -10.42 |
| 25 to 29 years | 808.7 | 8.9 | 1.11 | -81.4 | -9.14 |
| 30 to 34 years | 1,242.7 | 10.4 | 0.85 | -110.2 | -8.14 |
| 35 to 39 years | 1,498.2 | 7.3 | 0.49 | -35.4 | -2.31 |
| 40 to 44 years | 1,408.1 | 19.4 | 1.40 | -23.3 | -1.63 |
| 45 to 49 years | 1,282.5 | 6.3 | 0.50 | -27.4 | -2.09 |
| 50 to 54 years | 1,136.3 | 17.4 | 1.55 | 6.8 | 0.61 |
| 55 and over | 1,375.7 | 10.6 | 0.78 | -43.1 | -3.04 |
| FEMALES | 7,639.2 | 41.6 | 0.55 | -281.3 | -3.55 |
| 16 to 19 years | 23.7 | -1.7 | -6.72 | -12.7 | -34.82 |
| 20 to 24 years | 313.1 | -14.2 | -4.34 | -59.6 | -15.99 |
| 25 to 29 years | 765.3 | -6.3 | -0.82 | -124.7 | -14.01 |
| 30 to 34 years | 1,115.4 | 0.9 | 0.08 | -79.3 | -6.64 |
| 35 to 39 years | 1,230.0 | -2.7 | -0.22 | -36.9 | -2.92 |
| 40 to 44 years | 1,160.7 | 29.3 | 2.59 | 16.9 | 1.48 |
| 45 to 49 years | 1,072.7 | 14.3 | 1.35 | -5.1 | -0.48 |
| 50 to 54 years | 917.2 | -6.9 | -0.74 | 11.8 | 1.30 |
| 55 and over | 1,041.1 | 28.8 | 2.85 | 8.4 | 0.81 |
| TOTAL EMPLOYED | 16,783.8 | 149.0 | 0.90 | -633.5 | -3.64 |
| Agriculture | 760.7 | 37.5 | 5.19 | 28.4 | 3.88 |
| Industry | 2,299.9 | -16.8 | -0.73 | -138.4 | -5.67 |
| Construction | 1,023.3 | -26.5 | -2.52 | -169.6 | -14.22 |
| Services | 12,699.9 | 154.8 | 1.23 | -353.9 | -2.71 |

National results (Continuation)

| | Current quarter | Variation on previous quarter | | Variation on same quarter, previous year | |
|---|-----------------|-------------------------------|------------|--|------------|
| | | Difference | Percentage | Difference | Percentage |
| 5. Employed by professional status, type of contract, public / private sectors and working hours | | | | | |
| TOTAL EMPLOYED | 16,783.8 | 149.0 | 0.90 | -633.5 | -3.64 |
| BY PROFESSIONAL STATUS | | | | | |
| Self-employed workers | 3,049.4 | 37.3 | 1.24 | 37.1 | 1.23 |
| - Employers | 865.2 | 14.4 | 1.69 | -59.6 | -6.45 |
| - Independent workers | 2,037.5 | 13.9 | 0.69 | 107.4 | 5.56 |
| - Cooperatives members | 20.2 | -1.4 | -6.35 | -9.5 | -32.00 |
| - Family workers | 126.5 | 10.4 | 9.00 | -1.1 | -0.87 |
| Employees | 13,724.5 | 111.9 | 0.82 | -672.8 | -4.67 |
| - With a permanent job | 10,551.5 | -50.4 | -0.48 | -439.3 | -4.00 |
| - With a temporary job | 3,173.0 | 162.2 | 5.39 | -233.5 | -6.85 |
| Others | 9.8 | -0.2 | -2.01 | 2.1 | 27.57 |
| BY PUBLIC / PRIVATE SECTORS | | | | | |
| Employed by public sector | 2,843.2 | -2.6 | -0.09 | -197.9 | -6.51 |
| Employed by private sector | 13,940.5 | 151.6 | 1.10 | -435.6 | -3.03 |
| BY WORKING HOURS | | | | | |
| Full-time employed | 14,029.5 | 56.4 | 0.40 | -787.4 | -5.31 |
| Males | 8,385.9 | 20.7 | 0.25 | -469.2 | -5.30 |
| Females | 5,643.6 | 35.7 | 0.64 | -318.2 | -5.34 |
| Part-time employed | 2,754.2 | 92.6 | 3.48 | 153.9 | 5.92 |
| Males | 758.6 | 86.7 | 12.91 | 117.0 | 18.24 |
| Females | 1,995.6 | 5.8 | 0.29 | 36.9 | 1.88 |

*) Private employment are all persons in employment other than public employees. Namely: private employees, employers, independent workers, cooperative members, family workers and other professional status.

6. Unemployed by sex, age group, and economic sector

| | | | | | |
|-------------------------------------|---------|--------|--------|-------|--------|
| BOTH SEXES | 5,977.5 | -225.2 | -3.63 | 284.5 | 5.00 |
| 16 to 19 years | 203.9 | -0.9 | -0.42 | -31.3 | -13.30 |
| 20 to 24 years | 729.4 | -26.2 | -3.47 | 7.1 | 0.98 |
| 25 to 54 years | 4,476.9 | -188.0 | -4.03 | 237.0 | 5.59 |
| 55 and over | 567.3 | -10.1 | -1.75 | 71.6 | 14.45 |
| MALES | 3,142.9 | -161.9 | -4.90 | 49.1 | 1.59 |
| 16 to 19 years | 112.1 | -7.9 | -6.55 | -19.7 | -14.95 |
| 20 to 24 years | 393.5 | -16.7 | -4.07 | 10.5 | 2.74 |
| 25 to 54 years | 2,310.8 | -135.9 | -5.56 | 15.7 | 0.69 |
| 55 and over | 326.6 | -1.4 | -0.42 | 42.5 | 14.96 |
| FEMALES | 2,834.7 | -63.3 | -2.18 | 235.4 | 9.06 |
| 16 to 19 years | 91.9 | 7.0 | 8.25 | -11.6 | -11.19 |
| 20 to 24 years | 335.9 | -9.5 | -2.76 | -3.4 | -1.01 |
| 25 to 54 years | 2,166.1 | -52.0 | -2.35 | 221.3 | 11.38 |
| 55 and over | 240.7 | -8.7 | -3.49 | 29.1 | 13.76 |
| TOTAL UNEMPLOYED | 5,977.5 | -225.2 | -3.63 | 284.5 | 5.00 |
| Agriculture | 272.1 | -24.2 | -8.18 | -8.7 | -3.09 |
| Industry | 280.1 | -37.5 | -11.81 | -40.1 | -12.52 |
| Construction | 351.4 | -25.5 | -6.76 | -90.3 | -20.44 |
| Services | 1,665.9 | -157.9 | -8.66 | 0.4 | 0.02 |
| Lost their job more than 1 year ago | 2,897.6 | -3.5 | -0.12 | 404.8 | 16.24 |
| First job seekers | 510.5 | 23.5 | 4.82 | 18.3 | 3.73 |

National results

(Conclusion)

| | Current quarter | Variation on previous quarter | | Variation on same quarter, previous year | |
|--|-----------------|-------------------------------|------------|--|------------|
| | | Difference | Percentage | Difference | Percentage |

7. Unemployment rate by relationship with the reference person

| | | | | | |
|-------------------|-------|-------|---|------|---|
| TOTAL | 26.26 | -0.90 | - | 1.63 | - |
| Reference person | 21.83 | -0.68 | - | 1.30 | - |
| Spouse or partner | 21.78 | -0.86 | - | 1.58 | - |
| Child | 43.37 | -1.16 | - | 2.36 | - |
| Other relatives | 37.39 | -1.76 | - | 4.50 | - |
| Unrelated persons | 24.74 | 0.65 | - | 2.22 | - |

8. Household data

| | | | | | |
|--|----------|-------|-------|--------|-------|
| TOTAL HOUSEHOLDS | 17,440.8 | 49.3 | 0.28 | -10.9 | -0.06 |
| Households with at least one active member | 12,902.8 | -14.3 | -0.11 | -125.6 | -0.96 |
| - All member employed | 8,266.4 | 122.5 | 1.50 | -314.1 | -3.66 |
| - All member unemployed | 1,821.1 | -84.9 | -4.46 | 83.5 | 4.81 |
| Households without any active population | 4,537.9 | 63.6 | 1.42 | 114.7 | 2.59 |

Mobility according to activity in current and previous quarter

| Classification in previous quarter | Classification in current quarter | | | |
|------------------------------------|-----------------------------------|----------|------------|----------|
| | Total | Employed | Unemployed | Inactive |
| BOTH SEXES | | | | |
| Total | 100.00 | 100.00 | 100.00 | 100.00 |
| Employed | 43.39 | 92.69 | 10.98 | 2.43 |
| Unemployed | 15.59 | 5.37 | 74.22 | 5.08 |
| Inactive | 41.02 | 1.94 | 14.81 | 92.50 |
| MALES | | | | |
| Total | 100.00 | 100.00 | 100.00 | 100.00 |
| Employed | 48.51 | 92.85 | 11.16 | 2.69 |
| Unemployed | 17.04 | 5.65 | 77.73 | 4.98 |
| Inactive | 34.45 | 1.50 | 11.11 | 92.34 |
| FEMALES | | | | |
| Total | 100.00 | 100.00 | 100.00 | 100.00 |
| Employed | 38.56 | 92.50 | 10.78 | 2.25 |
| Unemployed | 14.23 | 5.04 | 70.40 | 5.14 |
| Inactive | 47.21 | 2.46 | 18.82 | 92.61 |

Grossing up factors of current quarter (forward analysis)

Results by Autonomous Communities and Cities

(Continues)

| | Current quarter | Variation on previous quarter | | Variation on same quarter, previous year | | |
|---|-----------------|-------------------------------|------------|--|------------|--|
| | | Difference | Percentage | Difference | Percentage | |
| 1. Population aged 16 years and over | | | | | | |
| TOTAL | 38,226.3 | -43.2 | -0.11 | -241.0 | -0.63 | |
| Andalucía | 6,799.0 | -0.2 | 0.00 | -2.8 | -0.04 | |
| Aragón | 1,097.3 | -2.0 | -0.18 | -8.5 | -0.77 | |
| Asturias, Principado de | 912.5 | -2.5 | -0.28 | -9.1 | -0.99 | |
| Balears, Illes | 917.0 | 4.3 | 0.47 | 11.2 | 1.24 | |
| Canarias | 1,788.2 | 2.6 | 0.14 | 16.6 | 0.94 | |
| Cantabria | 488.6 | -0.8 | -0.16 | -3.9 | -0.78 | |
| Castilla y León | 2,102.5 | -5.6 | -0.27 | -22.3 | -1.05 | |
| Castilla-La Mancha | 1,683.5 | -5.3 | -0.32 | -17.2 | -1.01 | |
| Cataluña | 5,952.3 | -5.7 | -0.10 | -73.7 | -1.22 | |
| Comunitat Valenciana | 4,156.9 | -1.8 | -0.04 | -18.0 | -0.43 | |
| Extremadura | 905.3 | -0.7 | -0.07 | -2.2 | -0.24 | |
| Galicia | 2,351.3 | -5.4 | -0.23 | -14.3 | -0.60 | |
| Madrid, Comunidad de | 5,224.1 | -15.7 | -0.30 | -60.0 | -1.14 | |
| Murcia, Región de | 1,188.4 | 1.6 | 0.13 | -6.4 | -0.53 | |
| Navarra, Comunidad Foral de | 509.6 | -1.2 | -0.24 | -4.2 | -0.82 | |
| País Vasco | 1,773.8 | -4.0 | -0.22 | -23.1 | -1.28 | |
| Rioja, La | 256.8 | -0.7 | -0.26 | -3.8 | -1.47 | |
| Ceuta | 60.4 | 0.1 | 0.14 | -0.1 | -0.13 | |
| Melilla | 58.8 | -0.1 | -0.24 | 0.6 | 1.05 | |

2. Active population

| | | | | | |
|-----------------------------|----------|-------|-------|--------|-------|
| TOTAL | 22,761.3 | -76.1 | -0.33 | -349.1 | -1.51 |
| Andalucía | 4,025.0 | 28.4 | 0.71 | 6.7 | 0.17 |
| Aragón | 638.5 | -5.9 | -0.91 | -17.9 | -2.73 |
| Asturias, Principado de | 471.7 | -12.7 | -2.63 | -12.1 | -2.51 |
| Balears, Illes | 621.6 | 29.7 | 5.02 | 9.8 | 1.60 |
| Canarias | 1,102.1 | -23.2 | -2.06 | -16.5 | -1.48 |
| Cantabria | 270.7 | -1.7 | -0.64 | -6.0 | -2.17 |
| Castilla y León | 1,151.5 | -4.5 | -0.39 | -32.7 | -2.76 |
| Castilla-La Mancha | 990.3 | 3.1 | 0.31 | -6.2 | -0.63 |
| Cataluña | 3,660.4 | -17.5 | -0.48 | -81.9 | -2.19 |
| Comunitat Valenciana | 2,490.7 | -1.4 | -0.06 | -2.2 | -0.09 |
| Extremadura | 509.4 | -1.1 | -0.22 | 17.1 | 3.47 |
| Galicia | 1,286.7 | 0.7 | 0.06 | -22.9 | -1.75 |
| Madrid, Comunidad de | 3,292.5 | -58.8 | -1.76 | -117.7 | -3.45 |
| Murcia, Región de | 730.9 | 2.7 | 0.37 | -13.7 | -1.85 |
| Navarra, Comunidad Foral de | 302.4 | -2.7 | -0.89 | -8.3 | -2.66 |
| País Vasco | 1,001.7 | -9.9 | -0.98 | -35.7 | -3.45 |
| Rioja, La | 147.5 | 0.5 | 0.33 | -8.2 | -5.27 |
| Ceuta | 34.8 | -1.7 | -4.63 | -0.2 | -0.55 |
| Melilla | 33.0 | 0.0 | 0.04 | -0.2 | -0.72 |

* Data below 5000 are subject to strong variations, due to sampling error

Results by Autonomous Communities and Cities (Conclusion)

| | Current quarter | Variation on previous quarter | | Variation on same quarter, previous year | |
|-----------------------------|-----------------|-------------------------------|------------|--|------------|
| | | Difference | Percentage | Difference | Percentage |
| 3. Employed | | | | | |
| TOTAL | 16,783.8 | 149.0 | 0.90 | -633.5 | -3.64 |
| Andalucía | 2,584.6 | 61.7 | 2.45 | -70.8 | -2.67 |
| Aragón | 498.6 | -1.7 | -0.35 | -35.5 | -6.65 |
| Asturias, Principado de | 356.6 | -5.1 | -1.42 | -25.5 | -6.66 |
| Balears, Illes | 490.9 | 68.1 | 16.10 | 9.2 | 1.92 |
| Canarias | 730.7 | -9.0 | -1.21 | -17.1 | -2.29 |
| Cantabria | 210.2 | -5.3 | -2.46 | -18.4 | -8.06 |
| Castilla y León | 906.6 | 13.2 | 1.47 | -43.6 | -4.58 |
| Castilla-La Mancha | 690.4 | 14.2 | 2.10 | -20.0 | -2.81 |
| Cataluña | 2,787.5 | 11.8 | 0.42 | -133.4 | -4.57 |
| Comunitat Valenciana | 1,766.8 | 2.2 | 0.13 | -50.5 | -2.78 |
| Extremadura | 337.8 | 8.8 | 2.67 | 9.8 | 2.99 |
| Galicia | 998.5 | 0.0 | 0.00 | -35.2 | -3.41 |
| Madrid, Comunidad de | 2,649.8 | -19.4 | -0.73 | -117.0 | -4.23 |
| Murcia, Región de | 518.0 | 10.9 | 2.15 | -31.7 | -5.76 |
| Navarra, Comunidad Foral de | 247.0 | -0.1 | -0.04 | -12.7 | -4.88 |
| País Vasco | 846.8 | -0.1 | -0.02 | -39.5 | -4.46 |
| Rioja, La | 116.9 | -2.2 | -1.83 | -3.4 | -2.84 |
| Ceuta | 22.6 | 0.2 | 0.74 | 1.5 | 6.86 |
| Melilla | 23.5 | 1.0 | 4.47 | 0.3 | 1.46 |

4. Unemployed

| | | | | | |
|-----------------------------|---------|--------|--------|-------|--------|
| TOTAL | 5,977.5 | -225.2 | -3.63 | 284.5 | 5.00 |
| Andalucía | 1,440.4 | -33.3 | -2.26 | 77.5 | 5.69 |
| Aragón | 139.9 | -4.1 | -2.87 | 17.6 | 14.37 |
| Asturias, Principado de | 115.1 | -7.6 | -6.18 | 13.3 | 13.10 |
| Balears, Illes | 130.7 | -38.3 | -22.68 | 0.6 | 0.43 |
| Canarias | 371.3 | -14.3 | -3.70 | 0.6 | 0.16 |
| Cantabria | 60.5 | 3.6 | 6.27 | 12.4 | 25.81 |
| Castilla y León | 244.9 | -17.7 | -6.73 | 10.9 | 4.64 |
| Castilla-La Mancha | 299.9 | -11.2 | -3.59 | 13.7 | 4.80 |
| Cataluña | 873.0 | -29.3 | -3.25 | 51.4 | 6.26 |
| Comunitat Valenciana | 723.9 | -3.6 | -0.50 | 48.3 | 7.16 |
| Extremadura | 171.6 | -9.9 | -5.46 | 7.3 | 4.44 |
| Galicia | 288.2 | 0.8 | 0.26 | 12.3 | 4.45 |
| Madrid, Comunidad de | 642.6 | -39.4 | -5.78 | -0.6 | -0.10 |
| Murcia, Región de | 212.9 | -8.2 | -3.71 | 17.9 | 9.20 |
| Navarra, Comunidad Foral de | 55.4 | -2.6 | -4.54 | 4.4 | 8.64 |
| País Vasco | 154.9 | -9.8 | -5.93 | 3.8 | 2.51 |
| Rioja, La | 30.6 | 2.7 | 9.53 | -4.8 | -13.55 |
| Ceuta | 12.1 | -1.9 | -13.23 | -1.6 | (:) |
| Melilla | 9.5 | -1.0 | -9.48 | -0.6 | (:) |

* Data below 5,000 are subject to strong variations, due to sampling error

(:) The variation percentages calculated from low figures with high sampling errors are not significant

Results by Autonomous Communities and Cities

(Absolute figures in thousands and rates in percentage)

5. Employed and unemployed by sex. Activity and unemployment rates

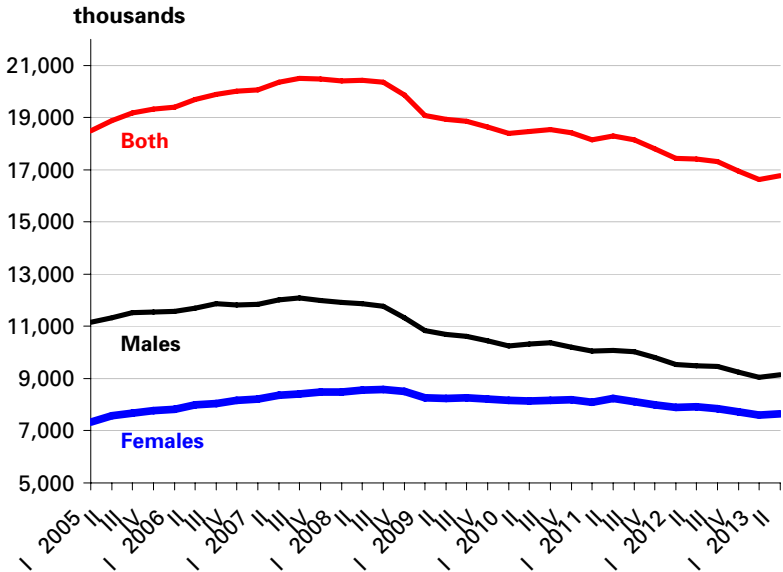
| | Both sexes | | | | Males | | | | Females | | | |
|---------------------------------|------------|------------|---------------|------------|----------|------------|---------------|------------|----------|------------|---------------|------------|
| | Employed | Unemployed | Activity rate | Unem. rate | Employed | Unemployed | Activity rate | Unem. Rate | Employed | Unemployed | Activity rate | Unem. Rate |
| TOTAL | 16,783.8 | 5,977.5 | 59.54 | 26.26 | 9,144.5 | 3,142.9 | 66.12 | 25.58 | 7,639.2 | 2,834.7 | 53.32 | 27.06 |
| Andalucía | 2,584.6 | 1,440.4 | 59.20 | 35.79 | 1,441.6 | 763.0 | 66.17 | 34.61 | 1,143.0 | 677.4 | 52.50 | 37.21 |
| Aragón | 498.6 | 139.9 | 58.19 | 21.92 | 279.5 | 67.4 | 64.31 | 19.43 | 219.0 | 72.5 | 52.26 | 24.87 |
| Asturias, Principado de | 356.6 | 115.1 | 51.69 | 24.40 | 185.4 | 62.6 | 57.52 | 25.24 | 171.2 | 52.5 | 46.47 | 23.47 |
| Balears, Illes | 490.9 | 130.7 | 67.78 | 21.03 | 267.1 | 67.9 | 73.59 | 20.26 | 223.8 | 62.8 | 62.06 | 21.92 |
| Canarias | 730.7 | 371.3 | 61.63 | 33.69 | 394.0 | 199.1 | 67.15 | 33.57 | 336.7 | 172.2 | 56.24 | 33.84 |
| Cantabria | 210.2 | 60.5 | 55.41 | 22.35 | 115.1 | 31.7 | 62.18 | 21.59 | 95.2 | 28.8 | 49.08 | 23.25 |
| Castilla y León | 906.6 | 244.9 | 54.77 | 21.27 | 510.6 | 122.1 | 61.25 | 19.30 | 396.0 | 122.8 | 48.51 | 23.67 |
| Castilla-La Mancha | 690.4 | 299.9 | 58.83 | 30.29 | 410.9 | 157.3 | 67.50 | 27.69 | 279.5 | 142.6 | 50.15 | 33.78 |
| Cataluña | 2,787.5 | 873.0 | 61.50 | 23.85 | 1,466.1 | 467.9 | 67.51 | 24.19 | 1,321.4 | 405.1 | 55.92 | 23.46 |
| Comunitat Valenciana | 1,766.8 | 723.9 | 59.92 | 29.06 | 989.6 | 376.4 | 66.89 | 27.55 | 777.3 | 347.5 | 53.19 | 30.90 |
| Extremadura | 337.8 | 171.6 | 56.27 | 33.69 | 193.6 | 90.2 | 63.53 | 31.78 | 144.2 | 81.4 | 49.20 | 36.09 |
| Galicia | 998.5 | 288.2 | 54.72 | 22.40 | 530.4 | 151.3 | 60.74 | 22.19 | 468.1 | 136.9 | 49.22 | 22.62 |
| Madrid, Comunidad de | 2,649.8 | 642.6 | 63.02 | 19.52 | 1,392.3 | 326.2 | 69.23 | 18.98 | 1,257.5 | 316.4 | 57.40 | 20.10 |
| Murcia, Región de | 518.0 | 212.9 | 61.51 | 29.13 | 297.9 | 117.1 | 69.77 | 28.23 | 220.1 | 95.8 | 53.22 | 30.33 |
| Navarra, Comunidad Foral | 247.0 | 55.4 | 59.34 | 18.32 | 135.3 | 30.1 | 66.11 | 18.19 | 111.6 | 25.3 | 52.80 | 18.48 |
| País Vasco | 846.8 | 154.9 | 56.47 | 15.46 | 443.8 | 84.4 | 62.51 | 15.98 | 403.0 | 70.5 | 50.98 | 14.88 |
| Rioja, La | 116.9 | 30.6 | 57.44 | 20.73 | 63.7 | 16.6 | 63.98 | 20.64 | 53.2 | 14.0 | 51.18 | 20.83 |
| Ceuta | 22.6 | 12.1 | 57.52 | 34.96 | 14.7 | 6.2 | 68.14 | 29.55 | 7.9 | 6.0 | 46.60 | 43.09 |
| Melilla | 23.5 | 9.5 | 56.08 | 28.74 | 13.0 | 5.3 | 64.21 | 29.13 | 10.5 | 4.1 | 48.39 | 28.25 |

* Data below 5,000 are subject to strong variations, due to sampling errors

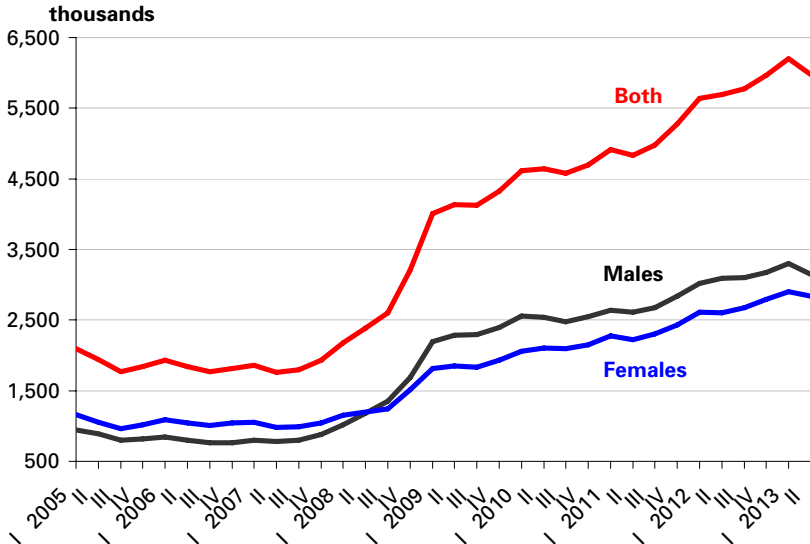
Employed and unemployed by sex

APS Second Quarter 2013

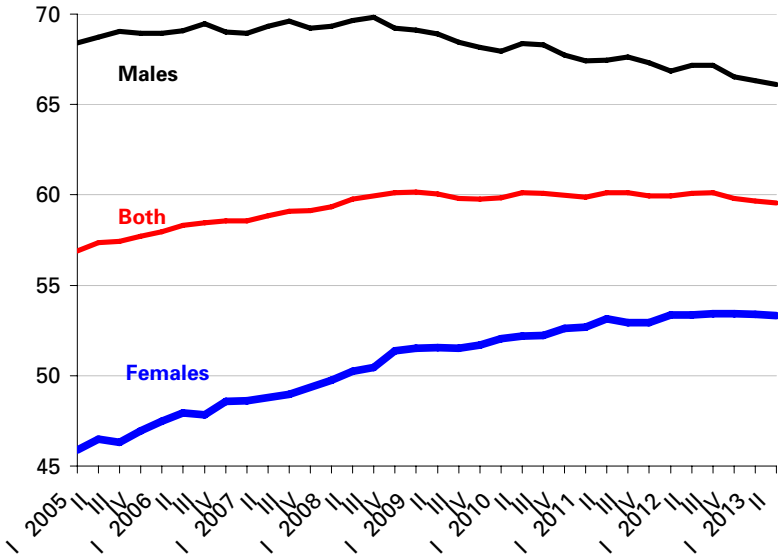
Employment



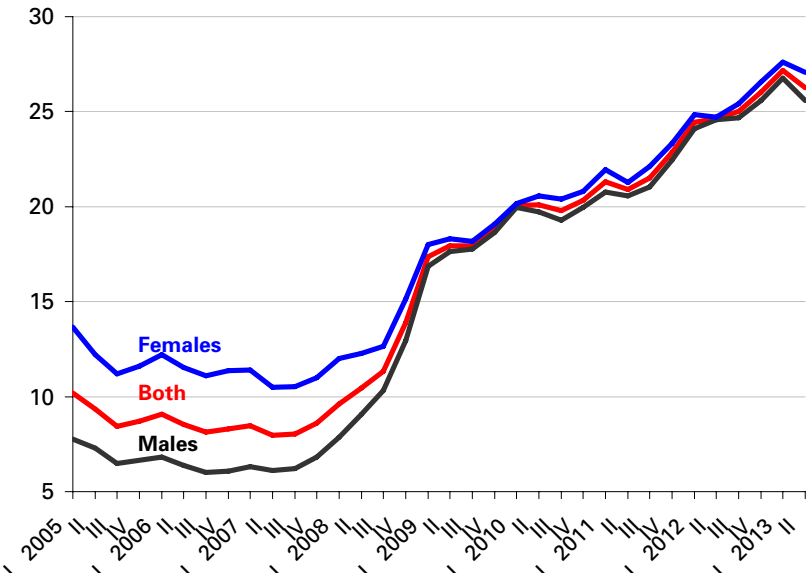
Unemployment



Activity rate



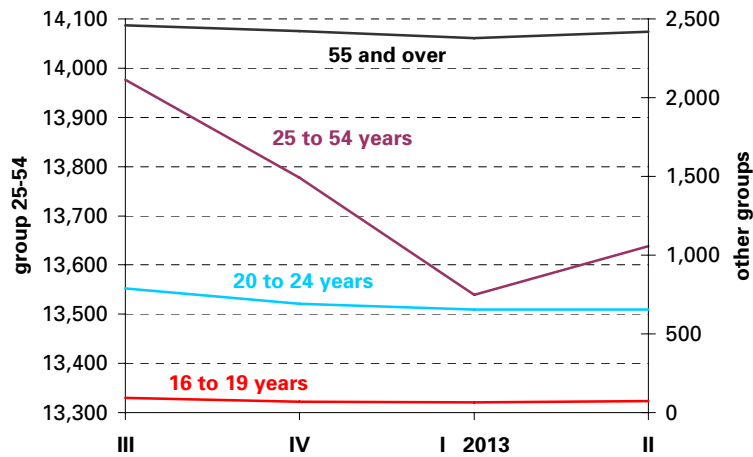
Unemployment rate



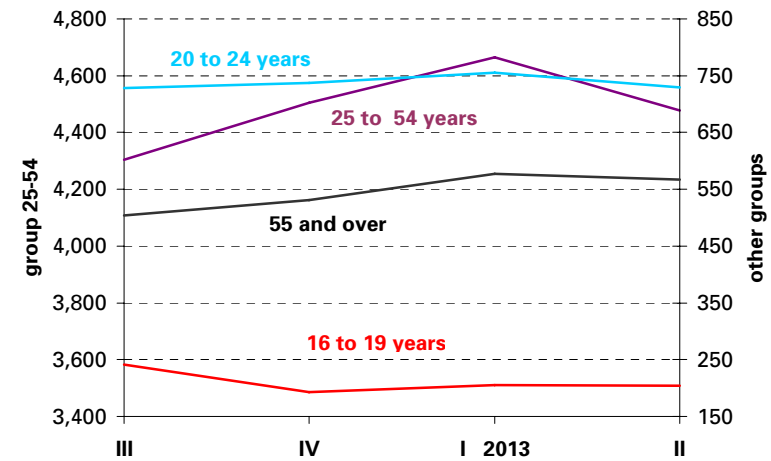
Employed and Unemployed by age

APS Second Quarter 2013

Employment (thousands)

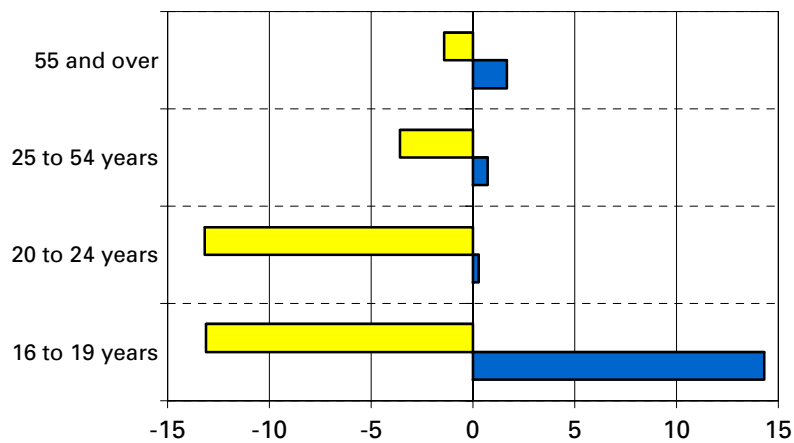


Unemployment (thousands)



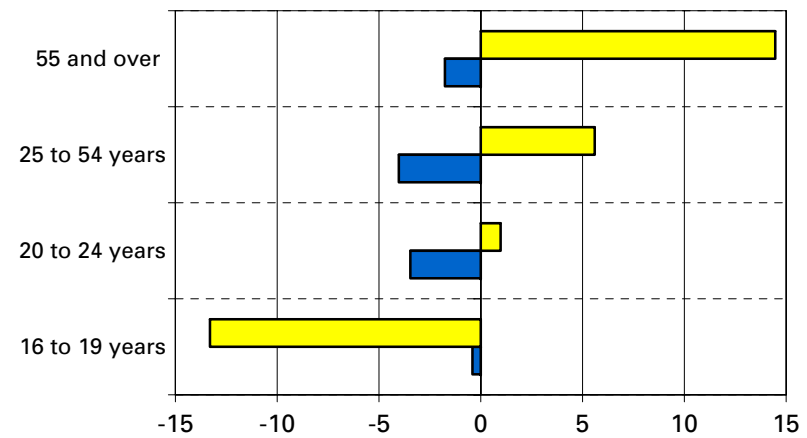
Variation percentages over the previous quarter and over the same quarter of the previous year

Employment



■ previous quarter ■ same quarter, previous year

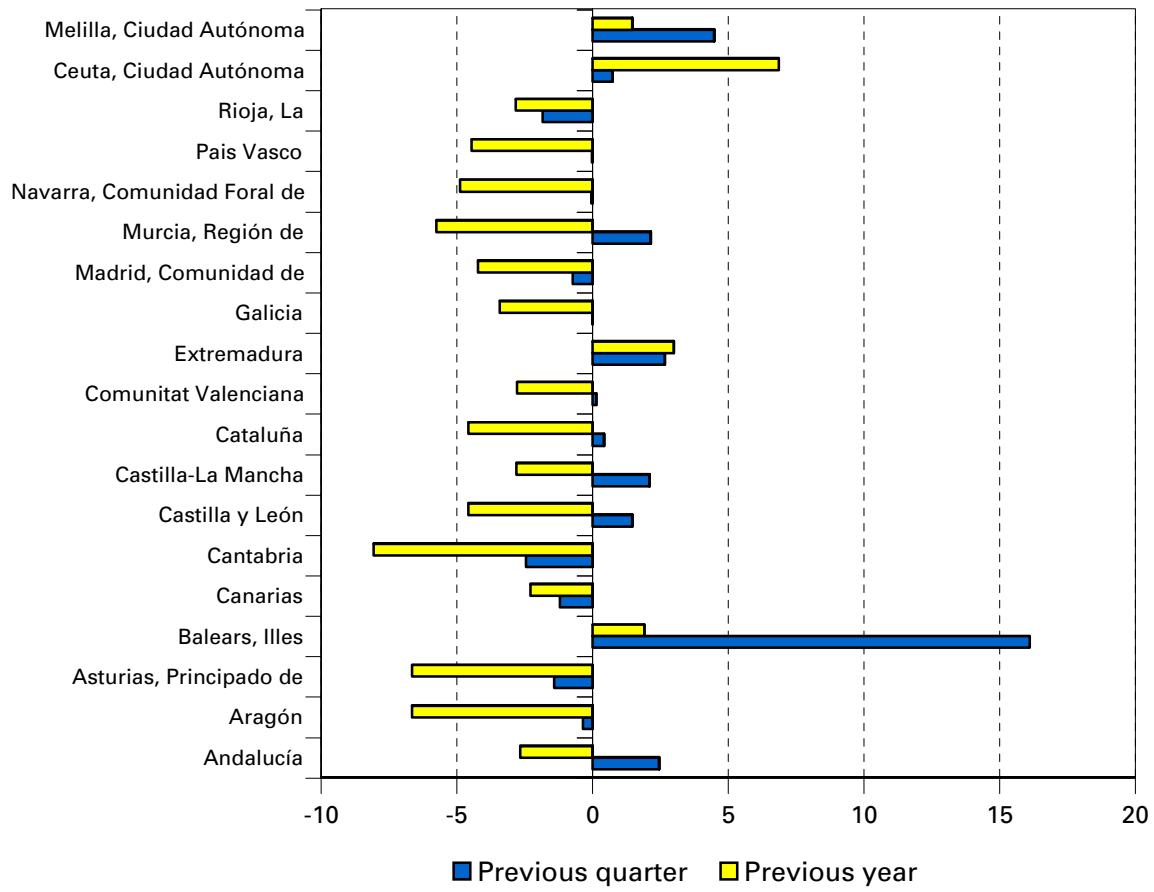
Unemployment



■ previous quarter ■ same quarter, previous year

Employment variation percentages over the previous quarter and over the same quarter of the previous year

Second Quarter 2013



Unemployment rate (Spain = 26.26)

