

27 July 2017

**Economically Active Population Survey (EAPS)
Second quarter of 2017**

Main results

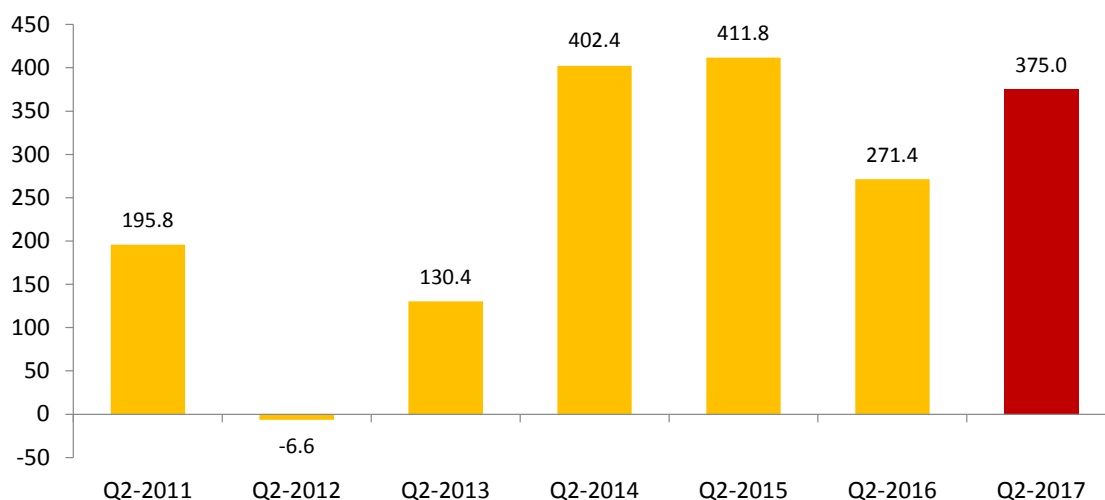
- Employment registers an increase of 375,000 persons in the second quarter of 2017 as compared with the previous quarter (2.03%), standing at 18,813,300 employed persons. The quarterly variation rate stands at 0.85% in non-seasonal terms. Employment has increased by 512,300 persons in the last 12 months. The annual variation rate is 2.80%.
- In this quarter, public employment registers an increase of 29,900 persons and of 345,100 persons in the private sector. In the last twelve months, employment has increased by 503,600 persons in the private sector and 8,700 in the public sector.
- This quarter, the total number of waged employees increases by 349,500. Those with permanent contract increase by 93,600, while those with a temporary contract increases by 255,900. The number of waged employees increases by 502,500 in annual rate (permanent employment increases by 202,800 persons and temporary employment by 299,700). The number of independent workers increases by 23,800 this quarter, while in the previous 12 months it has increased by 9,200.
- This quarter, the employment increases in *Services* (272,400 more), in *Industry* (65,700) and in *Construction* (52,100) and decreases in *Agriculture* (15,200 less). In the last year, employment increases in all sectors. In *Services* there are 244,100 more employed persons, in *Industry* 139,500, in *Agriculture* 72,400 and in *Construction* 56,300.
- The largest increases in employment this quarter were in Cataluña (72,600 more), Illes Balears (65,000) and Andalucía (53,500). In Castilla-La Mancha the number of employed persons decreases by 4,100 persons. In the last year the number of employed persons increases in all the Autonomous Communities. The greatest increases were observed in Andalucía (129,200), Cataluña (89,200) and Community of Madrid (71,200).
- The number of unemployed persons decreases by 340,700 this quarter (-8.01%), standing at 3,914,300. The quarterly variation rate stands at -5.08% in non-seasonal terms. In the last 12 months, unemployment decreased by 660,400 persons (-14.44%).
- The unemployment rate stands at 17.22%, 1.53 points below the rate of the previous quarter. Within the last year, this rate has decreased by 2.78 points.
- By Autonomous Community, the greatest unemployment decreases this quarter are recorded in Cataluña (79,200 less unemployed persons) and Comunidad de Madrid (38,900). In annual terms, the greatest decreases are recorded in Andalucía (160,800 less unemployed persons), Comunidad de Madrid (114,100) and Cataluña (106,200).
- This quarter, the number of economically active persons increases by 34,300, up to 22,727,600. The activity rate increases six hundredths standing at 58.84%. Over the last year, the economically active population has decreased by 148,000 persons.

Occupation

The number of employed persons increased by 375,000 persons in the second quarter of 2017, standing at 18,813,300, the highest figure since the third quarter of 2010. The quarterly variation rate of employment stood at 2.03%.

The employment rate (percentage of employed persons relative to the population aged 16 and over) stood at 48.70%, which is an increase of 0,94 points compared to the previous quarter. In annual variation, the rate rose by 1.17 points.

**Quarter-on-quarter employment evolution in thousands
(variation of 2nd Q as compared with 1st Q of the same year)**



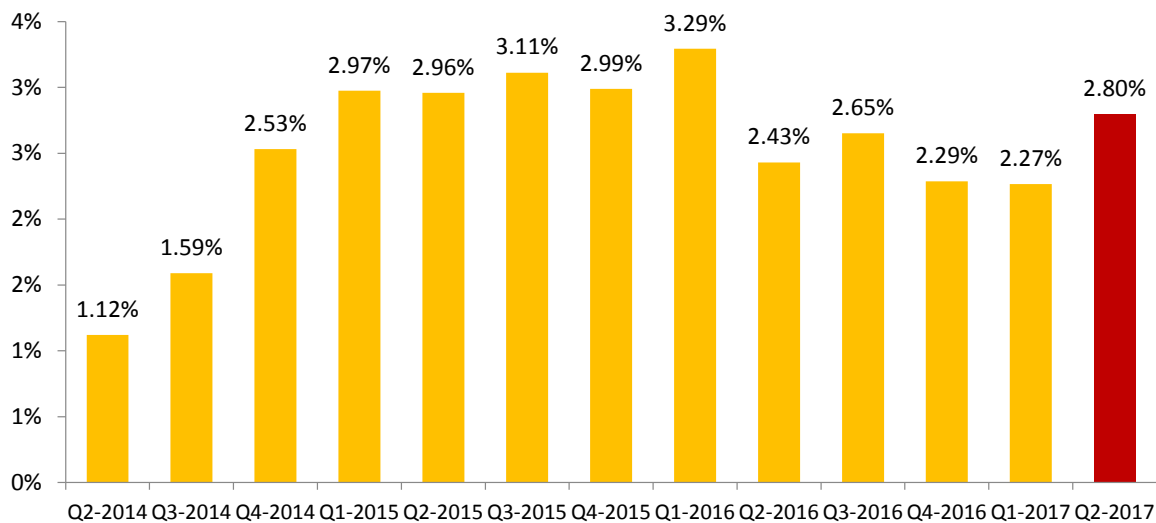
By gender, this quarter employment increased by 208,400 persons in men and by 166,700 in women.

By nationality, employment increased by 311,600 persons among Spaniards and by 63,400 persons among foreign nationals.

By age, the increase of employed persons is general, except in the group between 30 to 34 years old, that maintains practically the same employment level as in the previous quarter. The largest increases of employment occurred among persons aged between 40 to 44 years old (74,000) and in the group aged 55 years old and over (69,700).

In the past twelve months, employment has increased by 512,300 people (285,800 men and 226,600 women). The annual variation rate of employment was 2.80%, which is an increase of 0.53 points with respect to the previous quarter.

Evolution of the total number of employed persons, annual rate



This quarter, the number of employed persons increased in *Services* (272,400 more), in *Industry* (65,700) and in *Construction* (52,100) and decreased in *Agriculture* (15,200 less).

In the last year, employment increased in all sectors: *Services* registered 244,100 more employed persons, *Industry* 139,500, *Agriculture* 72,400 and *Construction* 56,300.

Full-time employment increased by 379,200 persons this quarter, while part-time employed persons decreased by 4,200. The percentage of persons working part-time decreased by 0.33 points up to 15.26%.

In the last 12 months, full-time employment has increased by 443,300 persons and the number of part-time employees did so by 69,000.

This quarter, the number of waged employees increased by 349,500. Those with permanent contract increased by 93,600, while those with a temporary contract did so by 255,900. The temporary employment rate has increased more than one point to 26.81%.

Over the last 12 months, the number of waged employees has increased by 502,500. Permanent employment increased by 202,800 persons and temporary employment did so by 299,700.

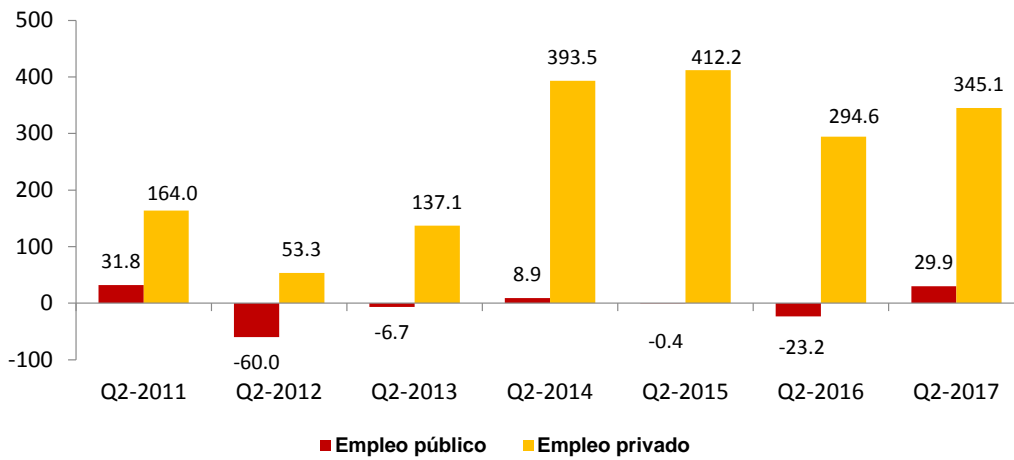
The number of self-employed persons increased by 23,800 persons this quarter. The number of employers increased by 48,600, while that of independent workers and businesspersons without employees decreased by 19,600.

This quarter, private employment¹ increased by 345,100 persons, standing at 15,809,500. Public employment² did so by 29,900 reaching 3,003,800.

¹ Employment in the private sector includes: waged employees from the private sector, employers, independent workers and businesspersons without employees, members of cooperatives, family assistance and other professional situations.

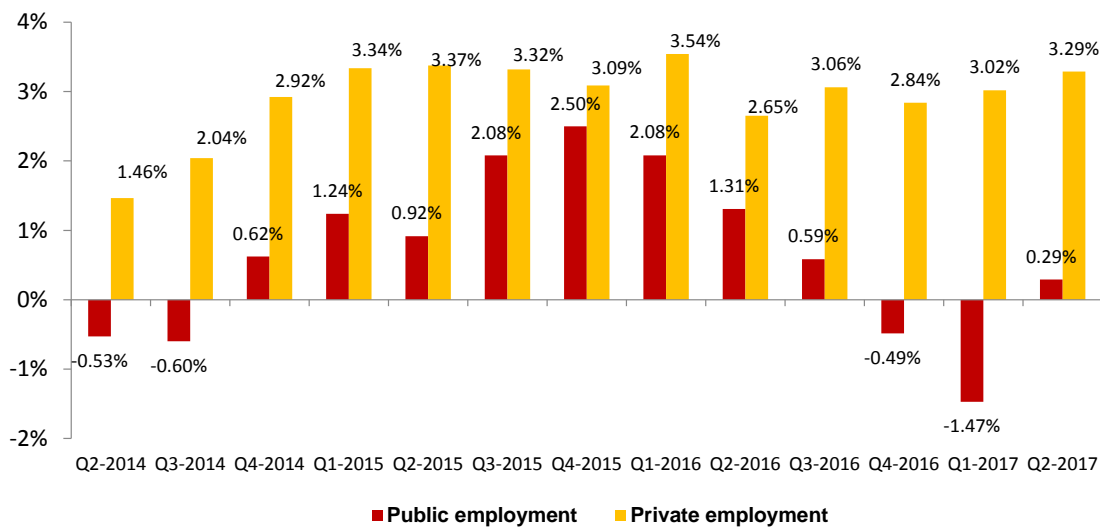
² Employment in the public sector includes all waged employees of public enterprises and of the National and Regional Administrations, including both workers contributing to the Social Security and those attached to the Special Civil Service System.

Quarter-on-quarter employment evolution by nature of the employer, in thousands (variation of 2nd Q as compared with 1st Q of the same year)



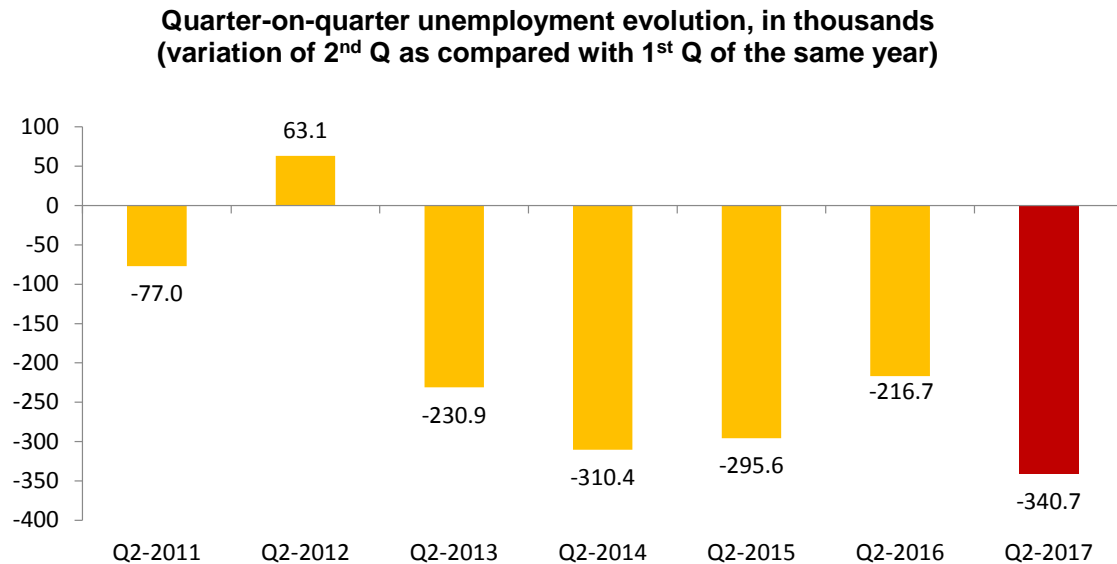
Employment in the private sector showed an annual variation of 3.29%, while public employment of 0.29%. In the past twelve months, employment has increased by 503,600 persons in the private sector and by 8,700 in the public sector.

Employment evolution by nature of employer, annual rate



Unemployment and unemployment rate

Unemployment increased by 340,700 persons this quarter. The total number of unemployed persons stood at 3,914,300. In relative terms, the quarterly decrease in unemployment was 8.01%.



The unemployment rate decreased 1.53 points and stood at 17.22%. In the last 12 months it has decreased by 2.78 points. The total number of unemployed persons and the unemployment rate are the lowest since the fourth quarter of 2008.

By sex, the number of unemployed men decreased by 189,200 this quarter, standing at 1,901,400. Among women, unemployment decreased by 151,500 reaching 2,012,900.

Female unemployment rate fell by 1.46 points and stood at 19.04%, while male unemployment fell by 1.58 points to 15.64%.

By age group, the unemployment decrease this quarter was concentrated in the 25-54 age bracket (314,800 less unemployed persons). On the other hand, the number of unemployed persons increased by 6,600 between persons from 16 to 19 years old.

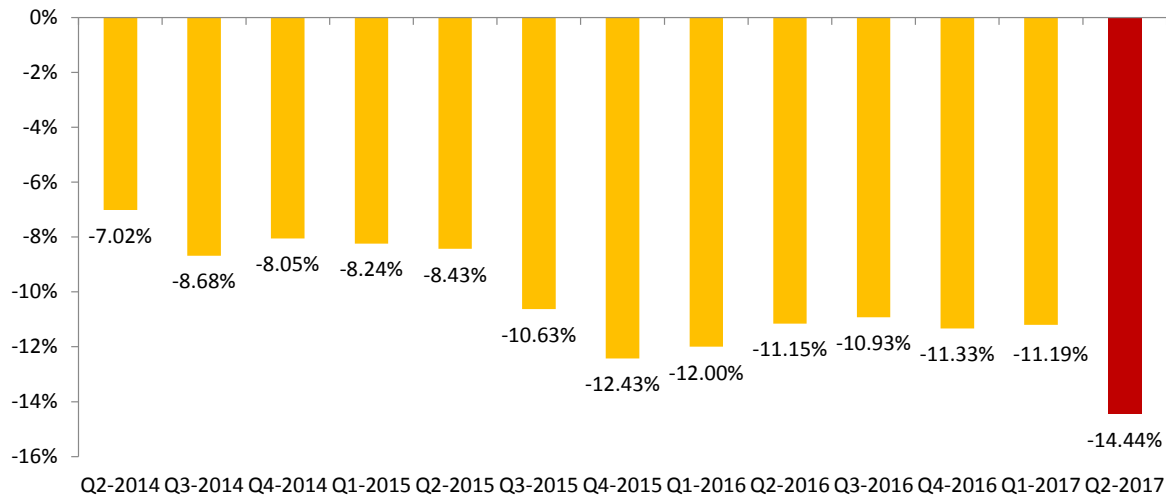
By nationality, unemployment fell by 296,500 persons among Spaniards and by 44,200 persons among foreign nationals. The unemployment rate of the Spanish population was 16.35%, while among the foreign population it was 23.65%.

This quarter, unemployment decreased in all sectors, mainly in the *Services* sector (144,000 less unemployed persons).

Unemployment decreased by 142,900 persons among those who lost their job over a year ago. However, it increased by 9,100 among those looking for their first employment.

The evolution of unemployment in annual rate was -14.44%. The total number of unemployed persons has decreased by 660,400 persons in a year, with a decrease of 348,300 in men and 312,100 in women.

Evolution of the total number of unemployed persons, annual rate



By age, the annual decrease of unemployment took place in all groups. The most significant drop was observed in the group aged 25-54 years old, (516,900 less unemployed persons).

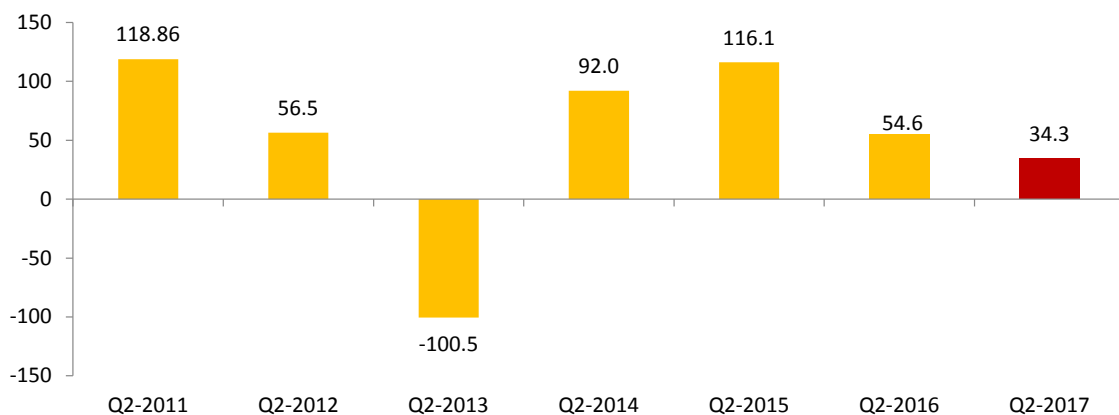
In the last 12 months, unemployment has fallen in all sectors. Mainly in *Services* (78,100 less unemployed persons), in *Agriculture* (45,700) and in *Construction* (41,500). Meanwhile, the number of unemployed people who lost their jobs over a year ago has fallen by 426,100 and the number of unemployed persons looking for their first job fell by 59,000.

Economically active population and activity rate

The economically active population experienced an increase by 34,300 persons in the second quarter of 2017 standing at 22,727,600. The number of economically active men increased by 19,200, whereas the number of active women did so by 15,100.

By nationality, in this quarter the number of economically active persons increased by 15,100 among Spaniards and by 19,200 among foreign nationals.

**Quarter-on-quarter activity evolution, in thousands
variation of 2nd Q as compared with 1st Q of the same year)**

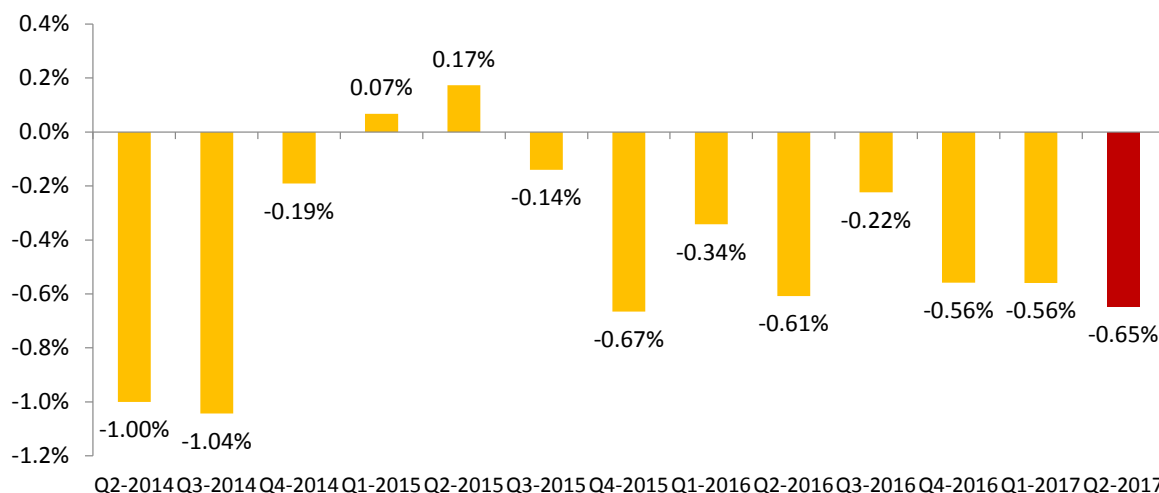


This quarter, the activity rate increased by 0,06 points to 58.84%. The male activity rate increases eight hundredths standing at 64.70%. That in women increased four hundredths, up to 53.28%.

The activity rate of Spaniards increased four hundredths as compared with the previous quarter, standing at 57.36%. Foreign national activity rate increased by one tenth, up to 72.60%. The difference between both activity rates is mainly explained by the different age structures of both populations.

In annual terms, the economically active population has been reduced by 148,000 people, while the working-age population (16-64 years) has decreased by 32,100. Annual variation of the economically active population was -0.65%, nine hundredths less than the previous quarter.

Total evolution of economically active persons, annual rate



Households

The number of households increased by 5,200 this quarter, standing at 18,505,200. Of these, 4,731,600 are single-person households.

Households in which all economically active members are unemployed decreased by 117,100 this quarter, up to a total of 1,277,600, the lowest figure since the fourth quarter of 2009. Of these, 318,700 are single-person households.

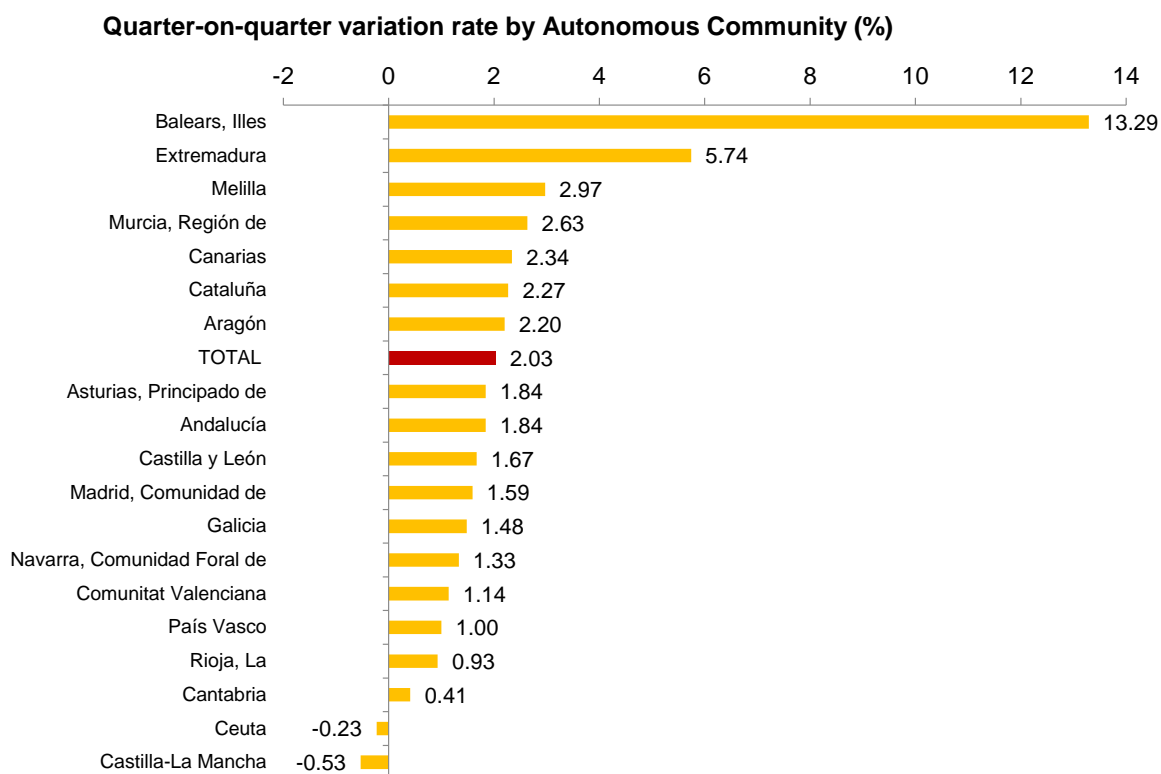
On the other hand, the number of households in which all of the economically active members were employed increased by 269,200, reaching 10,101,200. Of these, 1,903,900 are single-person households.

In annual comparison, the number of households with at least one economically active member in which everyone is unemployed has fallen by 216,200, while those who have all their active members in employment have grown by 439,000.

Results by Autonomous Communities³

Cataluña (72,000 more employed workers), Illes Balears (65,000) and Andalucía (53,500) presented the largest increases in employment this quarter. Castilla-La Mancha was the only Autonomous Community that decreased its number of employed persons (by 4,100).

In relative terms, the Autonomous Communities with the highest quarterly employment increase were Illes Balears (13.29%) and the Extremadura (5.74%). In Castilla-La Mancha employment dropped 0.53%.

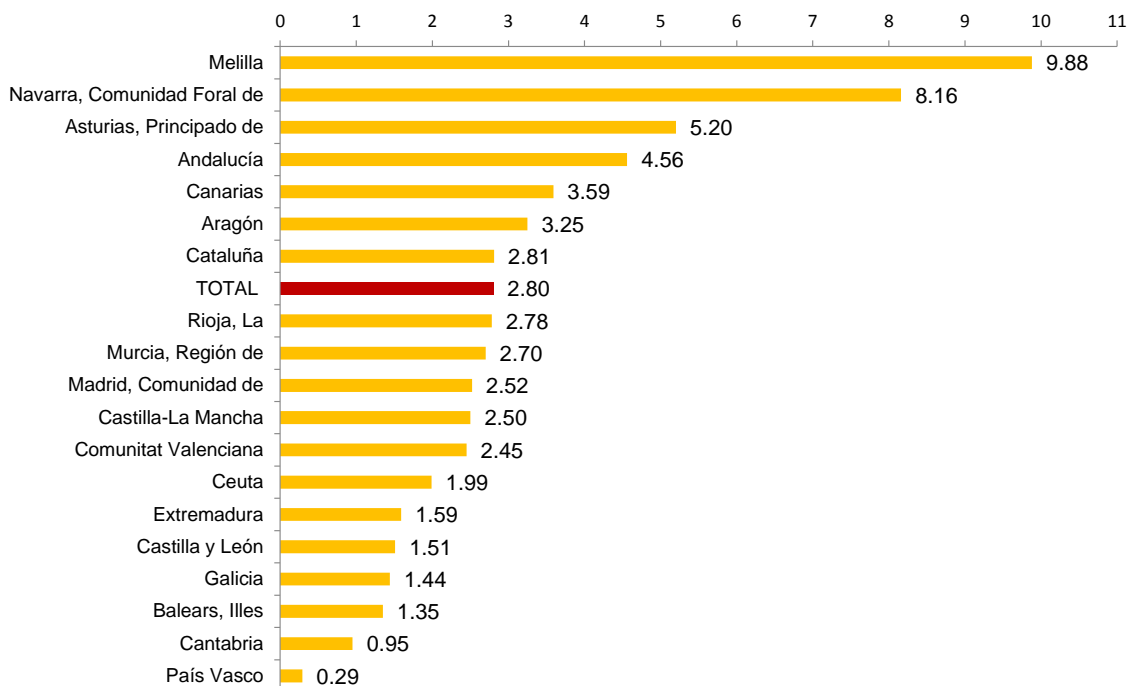


In annual variation, all the Autonomous Communities showed employment increases. The highest increases were recorded in Andalucía (129,200 more), Cataluña (89,200) and Comunidad de Madrid (71,200).

In relative terms, the Autonomous Communities with the highest annual employment variations were Comunidad Foral de Navarra (8.16%), Principado de Asturias (5.20%) and Andalucía (4.56%).

³ As with the rest of the EAPS data, employment results in this section are presented according to the Autonomous Community of residence of those persons interviewed in the survey, and not according to where their workplace is.

Annual variation rate of employment by Autonomous Community (%)



The greatest unemployment decreases this quarter were recorded in Cataluña (-79,200 unemployed persons), Andalucía (-72,200) and Comunidad de Madrid (-38,900).

In annual rate, unemployment fell in all Autonomous Communities. The greatest decreases were observed in Andalucía (-160,800 unemployed persons), Comunidad de Madrid (-114,100) and Cataluña (-106,200).

Comunidad Foral de Navarra (10.55%), La Rioja (10.92%) and País Vasco (11.23%) recorded the lowest unemployment rates this quarter. At the other extreme, Extremadura (25.76%), Andalucía (25.24%) and Canarias (24.30%) showed the highest rates.

The highest activity rates in this quarter were registered in Illes Balears (38,500 more economically active persons), Castilla y León (9,700) and Comunidad de Madrid (6,600). The greatest decreases were observed in Andalucía (-18,700 economically active persons), Castilla-La Mancha (-8,300) and Cataluña (-6,700).

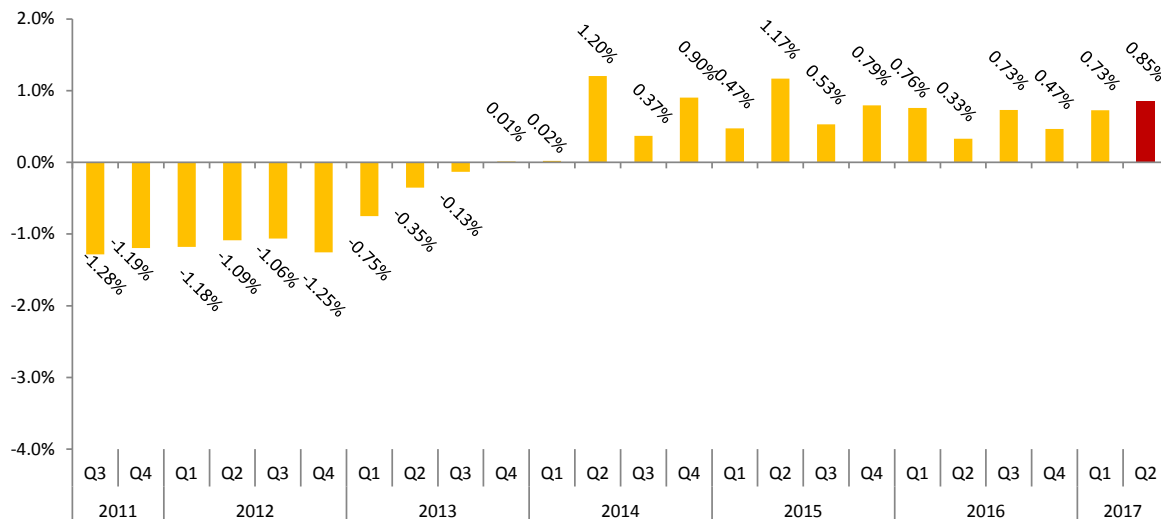
In the last 12 months, Comunidad Foral de Navarra and Región de Murcia presented the highest increases in the number of economically active persons (14,500 and 8,300 more, respectively). In turn, the greatest decreases were registered in Comunidad de Madrid (-42,800 economically active persons), Andalucía (-31,600) and Comunitat Valenciana (-20,900).

This quarter, the activity rates fluctuated between 65.68% for Illes Balears and 51.15% for Principado de Asturias.

Seasonally adjusted series

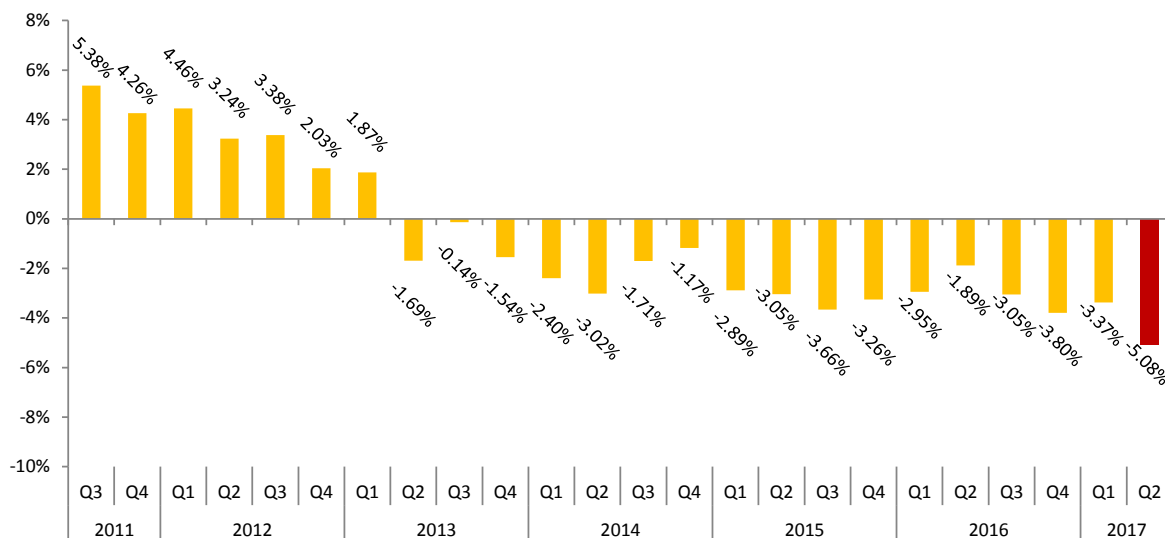
In the second quarter of 2017, the quarterly variation rate of employment adjusted for seasonal effects was 0.85%.

Deseasonalised evolution of employment, as a quarterly variation rate



As to the results for employment adjusted for seasonal effects, it observed a decrease of 5.08%.

Deseasonalised evolution of employment, as a quarterly variation rate



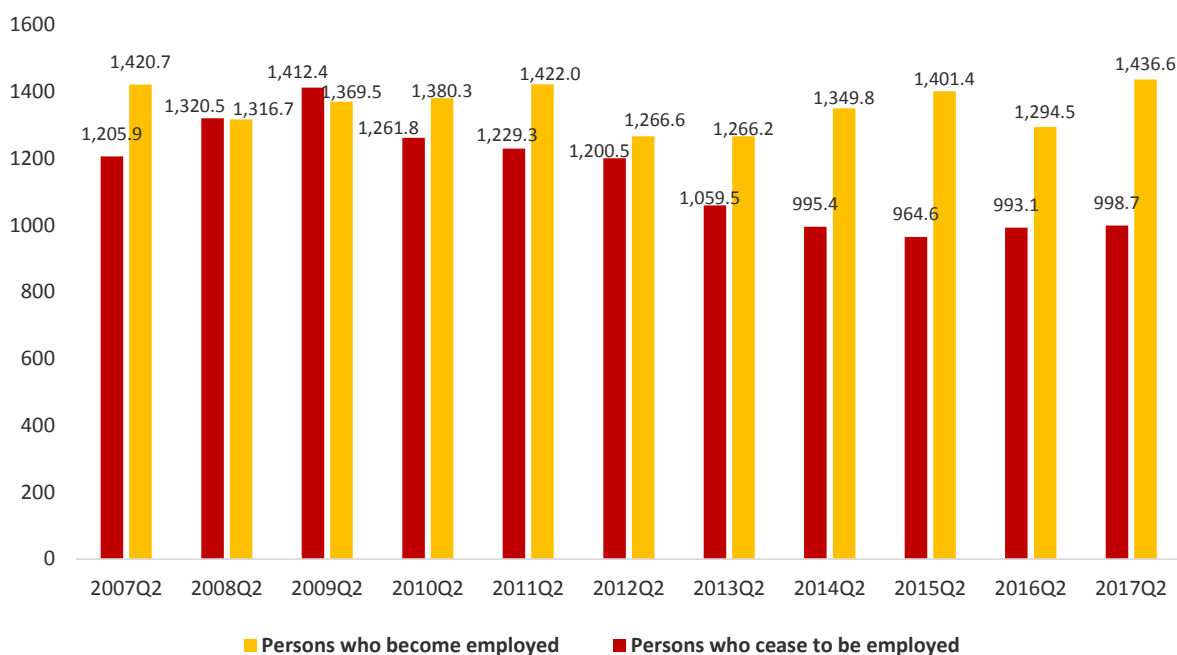
As discussed in the methodology used for seasonal adjustment, the seasonal adjustment model is maintained for a year. The re-identification of the model corresponds to the first quarters, but the coefficients are recalculated quarterly; this means that the previous results are reviewed each quarter (either by re-identification or revision of coefficients) and therefore the the latest series available must always be used. The results of the seasonally adjusted series of employment and unemployment since 1990 and the description of the method used are found at http://www.ine.es/en/daco/daco42/daco4211/epa_desestacional_en.xls

Flows in absolute values as compared with the previous quarter⁴

The total inflow to employment in the second quarter of 2017 was 1,436,600 people, a figure higher by 142,100 than that registered in the same quarter of the previous year.

However, the outflow from employment was 998,700 people, which is 5,600 more than in the same quarter of 2016.

Flows (in thousands) who become employed and who cease to be employed each quarter

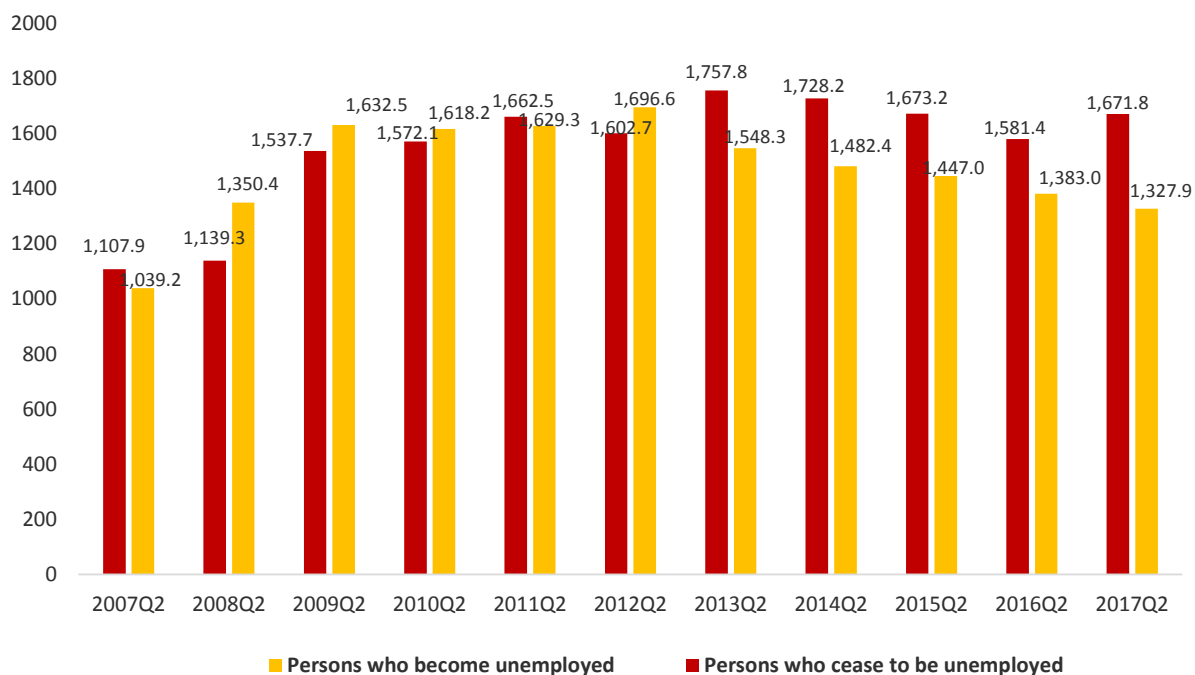


The number of people who were unemployed three months ago and now they are not stood at 1,671,800. This amount is 90,400 persons higher than in the same period of the previous year.

However, the total inflow to unemployment reached 1,327,900 people, which is 55,100 fewer persons than in the second quarter of 2016.

⁴ This section compiles the results of the *Economically Active Population Flow Statistics*. Due to the methodology used when preparing it, the results might not match the net balances of quarterly EAPS. The differences are caused by the “no data recorded” groups (persons turning 16 years old in the change between one quarter and the next who did not live in Spain in the previous quarter).

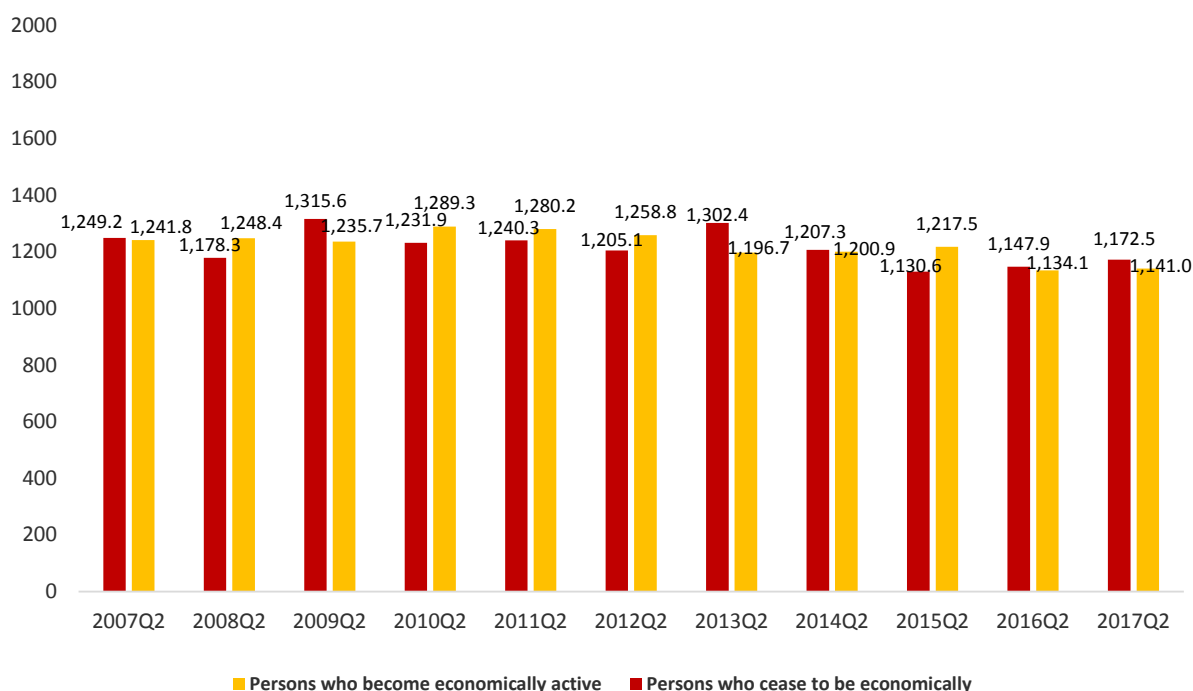
Flows (in thousands) who become unemployed and who cease to be unemployed



The inflow to activity this quarter was 1,141,000, a figure higher by 6,900 than that registered in the second quarter of 2016.

Meanwhile, a total of 1,172,500 people have left the activity this second quarter, compared to 1,147,900 who did so during the same period of 2016 (that is, 24,600 more).

Flows of persons (in thousands) who become economically active each quarter



The outflow from employment to inactivity of people over 60 years was 79,700 people this quarter. This figure is similar to that observed in the second quarter of 2016 (81,400).

People under the age of 25 years that were employed directly from being economically inactive this quarter were 124,900. This figure is higher by 9,600 than that registered in the second quarter of 2016. The opposite flow, the outflow from employment to inactivity was 74,700 people under 25 years, higher by 19,700 than that of the previous year.

The flow data on which these comments are based can be found in the annex to this press release http://www.ine.es/en/daco/daco42/daco4211/epafluj0217_en.xls

EAPS results by province

The provincial results summary of the EAPS may be accessed via the following link:

http://www.ine.es/en/daco/daco42/daco4211/epapro0217_en.pdf

All the provincial information from this survey may be accessed from the INEbase database:

<http://www.ine.es/dynt3/inebase/en/index.html?padre=996>

Methodological note

General features

The Economically Active Population Survey (EAPS) is a continuous sample-based study aimed at family dwellings, and which has been conducted since 1964. Its main objective is to obtain data on the labour force and on its different categories (employed, unemployed), as well as on the population outside of the labour force (inactive).

A stratified two stage sample has been used, in which first stage units are census sections. There are 3,588 sections in the sample, to which 234 sections in the Autonomous Community of Galicia are added starting the third quarter of 2009. The additional sample is collected by the Gallician Statistics Institute (IGE) using the same fieldwork system and identical methodology to that of the INE. Therefore, the EAPS sample is made up of 3,822 census sections from the more than 36,000 census sections into which Spain is divided. Taking a minimum theoretical sample of 20 households by section, which implies a theoretical size of 76,000 households, an effective sample size of approximately 63,000 dwellings is reached, providing information on some 163,000 persons.

The data is collected via personal and telephone interviews. Interviews are evenly distributed throughout the 13 weeks of the quarter. Following Eurostat's guidelines⁵, the first week of the year is that which has the first Thursday of said year. The first quarter has 13 consecutive weeks which start in the first week of the year. The following 13 weeks are attributed to the second quarter, and so on.

The information is carefully filtered and computer-processed. Results are obtained in the month following the end of the reference quarter for data and are published on the appointed date, as set out in INE's Short-term Statistics Availability Calendar.

Main definitions

(Economically) Active persons: persons aged 16 years old and over who, during the reference week (the week prior to that when the interview is held), supplied labour for the production of goods and services, or were available to do so and in conditions to incorporate themselves into said production. They are divided into employed and unemployed persons.

Employed persons: persons aged 16 years old and over who, during the reference week, worked for at least one hour in exchange for payment (salary, wage, business benefit, etc.) in cash or in kind. Persons who, being employed, had been temporarily absent from their job due to illness, holidays, etc., are also considered employed persons.

Employed persons are classified, considering their professional status, as non-wage earners (employers, businesspersons without wage earners and independent workers, cooperative members, family assistance) and wage earners (public or private).

Considering the length of the working day, employed persons are classified as full-time and part-time employed persons. The usual working week may not be shorter than 30 hours in

⁵ See Regulation (CE) No 377/2008 from the Commission.

the first case, nor exceed 35 hours in the second. Part-time employment rate is calculated as the proportion of part-time employed persons compared with the total of employed persons.

Wage earners are classified as permanent and temporary. For the latter, the end of their contract or work relationship is set by means of objective conditions, such as the expiry of a certain period of time, the completion of a specific task, etc. Temporary employment rate is calculated as the proportion of employed persons with a temporary contract compared with the total of employed persons.

A significant category within employment is that of time-related underemployment, defined in the 16th International Labour Statisticians Conference (Geneva, 1998). In the EAPS, time-related underemployed persons are persons who wish to work more hours, who are available to do so and whose actual working hours during the reference week are less than the weekly working hours of full-time employees in the branch of activity in which the unemployed person has their main job.

Unemployed persons: persons aged 16 years old and over who, during the reference week, were unemployed, available for work, and actively looking for a job. Persons who might have already found a job and are waiting to start are also considered to be unemployed, provided that they meet the first two conditions.

According to European Commission Regulation 1897/2000, the following are considered to be active search methods, in the four weeks prior to the interview:

- Being in contact with a public employment office for the purpose of finding work, whatever part they play in the initiative (the renewal of registration due to purely administrative reasons does not constitute active planning).
- Being in contact with a private office (temporary employment agency, specialised hiring agency, etc.) with the objective of finding work.
- Having sent an application directly to employers.
- Having searched via personal relations and trade unions, etc.
- Having advertised oneself or responded to newspaper advertisements.
- Having studied job vacancies.
- Having taken part in a test, public exam or interview in the framework of a contracting procedure.
- Having looked for land, premises or material.
- Having taken steps to obtain permits, licences or financial resources.

(Economically) Inactive persons: persons aged 16 years old and over not included in any of the above categories.

Economically Active Population Flow Statistics: Quarterly changes in the labour situation

The Flows Statistics estimates the magnitude of all the movements that have taken place regarding employment, unemployment and economically inactive situations between the current and the previous quarter. In order to do so, a longitudinal monitoring of the persons interviewed in the EAPS over time is conducted.

Therefore, results are calculated from the common sample interviewed effectively in both periods, adding the sample of the persons who have turned 16 years of age during the current quarter and the sample of the persons who have arrived in Spain from abroad during that same period.

The rotation established for the EAPS, which consists in renovating one-sixth of the households in the sample each quarter, implies that the maximum available sample to calculate the estimates based on the common sample is 5/6. Nevertheless, incidences regarding information collection in one quarter or the next cause a greater decrease in the proportion of the sample used to estimate flows. Therefore, if the complete sample of persons aged 16 and over of a quarter is around 140,000 persons, the sample that holds flow estimates is a bit more than 100,000.

Elevation factors are calculated in the same way as they are calculated for the quarterly EAPS, but adding an additional measure to the total amount of employed, unemployed and economically inactive persons by Autonomous Community, with the intention that both samples (flow and complete EAPS samples) offer the same results for the main magnitudes in the current quarter.

This procedure, however, does not allow adjusting EAPS flow estimates with the results of previous quarters. This information must always be used in relation with the results of the current quarter. Any accounting exercise involving the addition or subtraction of flow figures to/from the current quarter figures will have discrepancies with the results of the previous quarter, due to the weighting of the used results and the presence in the current quarter of population that was not considered in the previous one (persons arrived from abroad and persons who have turned 16 years of age in the last three months).

A full overview of the results regarding flows may be accessed via the following link:

http://www.ine.es/en/inebaseDYN/flujos30310/docs/metoflujos_valores_absolutos_en.pdf

Economically Active Population Survey Second Quarter 2017

National results

(Continues)

	Current quarter	Variation on previous quarter		Variation on same quarter, previous year	
		Difference	Percentage	Difference	Percentage
1. Population aged 16 years and over by sex and labour status					
BOTH SEXES					
Population aged 16 years and over	38,629.1	21.1	0.05	123.4	0.32
Active population	22,727.6	34.3	0.15	-148.0	-0.65
- Employed	18,813.3	375.0	2.03	512.3	2.80
- Unemployed	3,914.3	-340.7	-8.01	-660.4	-14.44
Inactive	15,901.5	-13.2	-0.08	271.5	1.74
Activity rate	58.84	0.06	-	-0.57	-
Unemployment rate	17.22	-1.53	-	-2.78	-
Population aged 16 to 64 years	30,036.0	-4.2	-0.01	-32.1	-0.11
Activity rate (16-64)	75.06	0.10	-	-0.46	-
Unemployment rate (16-64)	17.34	-1.53	-	-2.78	-
Employment rate (16-64)	62.04	1.23	-	1.72	-
MALES					
Population aged 16 years and over	18,791.1	6.9	0.04	49.4	0.26
Active population	12,158.3	19.2	0.16	-62.5	-0.51
- Employed	10,256.9	208.4	2.07	285.8	2.87
- Unemployed	1,901.4	-189.2	-9.05	-348.3	-15.48
Inactive	6,632.9	-12.3	-0.18	111.9	1.72
Activity rate	64.70	0.08	-	-0.50	-
Unemployment rate	15.64	-1.58	-	-2.77	-
Population aged 16 to 64 years	15,029.9	-6.1	-0.04	-27.9	-0.19
Activity rate (16-64)	80.18	0.14	-	-0.36	-
Unemployment rate (16-64)	15.76	-1.58	-	-2.77	-
Employment rate (16-64)	67.55	1.39	-	1.92	-
FEMALES					
Population aged 16 years and over	19,837.9	14.2	0.07	74.0	0.37
Active population	10,569.4	15.1	0.14	-85.6	-0.80
- Employed	8,556.4	166.7	1.99	226.6	2.72
- Unemployed	2,012.9	-151.5	-7.00	-312.1	-13.42
Inactive	9,268.6	-0.9	-0.01	159.6	1.75
Activity rate	53.28	0.04	-	-0.63	-
Unemployment rate	19.04	-1.46	-	-2.78	-
Population aged 16 to 64 years	15,006.1	2.0	0.01	-4.2	-0.03
Activity rate (16-64)	69.93	0.06	-	-0.55	-
Unemployment rate (16-64)	19.16	-1.46	-	-2.79	-
Employment rate (16-64)	56.53	1.07	-	1.52	-

2. Spanish population⁽¹⁾ aged 16 years and over by labour status

SPANISH POPULATION AGED 16 YEARS AND OVER	34,891.5	-0.4	0.00	94.3	0.27
Active population	20,014.2	15.1	0.08	-134.2	-0.67
- Employed	16,741.6	311.6	1.90	423.2	2.59
- Unemployed	3,272.6	-296.5	-8.31	-557.4	-14.55
Inactive	14,877.3	-15.5	-0.10	228.5	1.56
Activity rate	57.36	0.04	-	-0.54	-
Unemployment rate	16.35	-1.49	-	-2.66	-

⁽¹⁾ including dual nationality

27th of July 2017

National results

(Continuation)

	Current quarter	Variation on previous quarter		Variation on same quarter, previous year	
		Difference	Percentage	Difference	Percentage
3. Foreign population aged 16 years and over by labour status					
FOREIGN POPULATION AGED 16 YEARS AND OVER	3,737.6	21.5	0.58	29.1	0.78
Active population	2,713.4	19.2	0.71	-13.8	-0.51
- Employed	2,071.7	63.4	3.16	89.2	4.50
- Unemployed	641.7	-44.2	-6.45	-103.0	-13.83
Inactive	1,024.2	2.3	0.22	43.0	4.38
Activity rate	72.60	0.10	-	-0.94	-
Unemployment rate	23.65	-1.81	-	-3.66	-
4. Employed by sex, age group and economic sector					
BOTH SEXES	18,813.3	375.0	2.03	512.3	2.80
16 to 19 years	111.0	16.5	17.48	26.1	30.80
20 to 24 years	782.0	47.6	6.48	69.2	9.71
25 to 29 years	1,635.8	54.2	3.43	50.9	3.21
30 to 34 years	2,142.3	-0.6	-0.03	-43.7	-2.00
35 to 39 years	2,814.4	13.3	0.48	-66.2	-2.30
40 to 44 years	3,051.7	74.0	2.49	138.3	4.75
45 to 49 years	2,723.0	53.0	1.98	40.4	1.51
50 to 54 years	2,444.3	47.3	1.97	116.0	4.98
55 and over	3,108.8	69.7	2.29	181.4	6.20
MALES	10,256.9	208.4	2.07	285.8	2.87
16 to 19 years	66.8	6.6	11.04	14.8	28.47
20 to 24 years	404.1	21.7	5.68	19.4	5.06
25 to 29 years	844.9	27.9	3.41	28.9	3.54
30 to 34 years	1,128.3	-9.2	-0.81	-37.2	-3.19
35 to 39 years	1,521.6	2.4	0.16	-36.4	-2.34
40 to 44 years	1,671.1	36.1	2.21	75.9	4.76
45 to 49 years	1,509.4	34.7	2.35	26.6	1.79
50 to 54 years	1,366.3	35.7	2.69	74.4	5.76
55 and over	1,744.4	52.4	3.09	119.4	7.35
FEMALES	8,556.4	166.7	1.99	226.6	2.72
16 to 19 years	44.2	9.9	28.74	11.3	34.47
20 to 24 years	377.9	25.9	7.35	49.8	15.17
25 to 29 years	790.9	26.3	3.44	22.0	2.86
30 to 34 years	1,014.0	8.7	0.86	-6.5	-0.64
35 to 39 years	1,292.8	10.9	0.85	-29.8	-2.25
40 to 44 years	1,380.6	37.9	2.82	62.3	4.73
45 to 49 years	1,213.6	18.3	1.53	13.8	1.15
50 to 54 years	1,078.0	11.6	1.08	41.6	4.01
55 and over	1,364.4	17.3	1.29	62.0	4.76
TOTAL EMPLOYED	18,813.3	375.0	2.03	512.3	2.80
Agriculture	832.6	-15.2	-1.79	72.4	9.52
Industry	2,636.6	65.7	2.56	139.5	5.59
Construction	1,133.6	52.1	4.82	56.3	5.23
Services	14,210.6	272.4	1.95	244.1	1.75

National results

(Continuation)

	Current quarter	Variation on previous quarter		Variation on same quarter, previous year	
		Difference	Percentage	Difference	Percentage
5. Employed by professional status, type of contract, public / private sectors and working hours					
TOTAL EMPLOYED	18,813.3	375.0	2.03	512.3	2.80
BY PROFESSIONAL STATUS					
Self-employed workers	3,115.2	23.8	0.77	9.2	0.30
- Employers	977.0	48.6	5.24	62.3	6.80
- Independent workers	2,032.9	-19.6	-0.95	-53.7	-2.57
- Cooperatives members	25.9	4.9	23.41	1.5	6.30
- Family workers	79.4	-10.2	-11.37	-0.9	-1.12
Employees	15,690.3	349.5	2.28	502.5	3.31
- With a permanent job	11,484.1	93.6	0.82	202.8	1.80
- With a temporary job	4,206.1	255.9	6.48	299.7	7.67
Others	7.9	1.8	29.59	0.7	9.83
BY PUBLIC / PRIVATE SECTORS					
Employed by public sector	3,003.8	29.9	1.01	8.7	0.29
Employed by private sector	15,809.5	345.1	2.23	503.6	3.29
BY WORKING HOURS					
Full-time employed	15,943.2	379.2	2.44	443.3	2.86
Males	9,499.3	245.0	2.65	305.1	3.32
Females	6,443.9	134.3	2.13	138.2	2.19
Part-time employed	2,870.1	-4.2	-0.15	69.0	2.46
Males	757.5	-36.6	-4.61	-19.3	-2.48
Females	2,112.6	32.4	1.56	88.3	4.36

*) Private employment are all persons in employment other than public employees. Namely: private employees, employers, independent workers, cooperative members, family workers and other professional status.

6. Unemployed by sex, age group, and economic sector

BOTH SEXES	3,914.3	-340.7	-8.01	-660.4	-14.44
16 to 19 years	141.1	6.6	4.93	-6.6	-4.50
20 to 24 years	442.7	-14.6	-3.19	-102.3	-18.78
25 to 54 years	2,788.4	-314.8	-10.14	-516.9	-15.64
55 and over	542.1	-17.9	-3.20	-34.5	-5.99
MALES	1,901.4	-189.2	-9.05	-348.3	-15.48
16 to 19 years	80.5	1.5	1.94	-3.5	-4.18
20 to 24 years	242.0	-7.3	-2.92	-43.4	-15.22
25 to 54 years	1,291.5	-157.2	-10.85	-273.2	-17.46
55 and over	287.4	-26.3	-8.38	-28.2	-8.92
FEMALES	2,012.9	-151.5	-7.00	-312.1	-13.42
16 to 19 years	60.6	5.1	9.19	-3.1	-4.91
20 to 24 years	200.7	-7.3	-3.52	-58.9	-22.69
25 to 54 years	1,496.9	-157.6	-9.53	-243.7	-14.00
55 and over	254.7	8.3	3.39	-6.4	-2.45
TOTAL UNEMPLOYED	3,914.3	-340.7	-8.01	-660.4	-14.44
Agriculture	206.0	-11.8	-5.44	-45.7	-18.17
Industry	171.5	-11.8	-6.45	-9.9	-5.47
Construction	136.4	-39.3	-22.36	-41.5	-23.32
Services	1,258.7	-144.0	-10.27	-78.1	-5.84
Lost their job more than 1 year ago	1,728.0	-142.9	-7.64	-426.1	-19.78
First job seekers	413.8	9.1	2.26	-59.0	-12.47

National results

(Conclusion)

	Current quarter	Variation on previous quarter		Variation on same quarter, previous year	
		Difference	Percentage	Difference	Percentage

7. Unemployment rate by relationship with the reference person

	Current quarter	Variation on previous quarter	Percentage	Variation on same quarter, previous year	Percentage
TOTAL	17.22	-1.53	-	-2.78	-
Reference person	13.87	-1.54	-	-2.37	-
Spouse or partner	14.55	-1.08	-	-2.41	-
Child	30.64	-2.57	-	-4.90	-
Other relatives	25.59	-1.68	-	-2.13	-
Unrelated persons	12.86	-1.03	-	-4.03	-

8. Household data

	Current quarter	Variation on previous quarter	Percentage	Variation on same quarter, previous year	Percentage
TOTAL HOUSEHOLDS	18,505.2	5.2	0.03	79.0	0.43
Households with at least one active member	13,381.7	23.8	0.18	-22.7	-0.17
- All member employed	10,101.2	269.2	2.74	439.0	4.54
- All member unemployed	1,277.6	-117.1	-8.39	-216.2	-14.47
Households without any active population	5,123.5	-18.6	-0.36	101.6	2.02

Mobility according to activity in current and previous quarter

Classification in previous quarter	Classification in current quarter			
	Total	Employed	Unemployed	Inactive
BOTH SEXES				
Total	38,629.1	18,813.3	3,914.3	15,901.5
Employed	18,375.4	17,376.7	588.0	410.7
Unemployed	4,258.2	1,030.2	2,586.4	641.6
Inactive	15,870.0	403.7	737.3	14,729.0
Not classifiable	125.5	2.8	2.6	120.1
MALES				
Total	18,791.1	10,249.7	1,885.8	6,655.6
Employed	10,021.9	9,525.5	319.2	177.2
Unemployed	2,067.5	542.7	1,272.4	252.5
Inactive	6,641.5	180.7	291.6	6,169.2
Not classifiable	60.2	0.9	2.6	56.7
FEMALES				
Total	19,837.9	8,563.6	2,028.5	9,245.9
Employed	8,353.5	7,851.2	268.8	233.5
Unemployed	2,190.7	487.5	1,314.1	389.1
Inactive	9,228.4	223.0	445.7	8,559.8
Not classifiable	65.3	1.9	0.0	63.4

Grossing up factors of current quarter (forward analysis)

Results by Autonomous Communities and Cities

(Continues)

	Current quarter	Variation on previous quarter		Variation on same quarter, previous year	
		Difference	Percentage	Difference	Percentage
1. Population aged 16 years and over					
TOTAL	38,629.1	21.1	0.05	123.4	0.32
Andalucía	6,899.8	-0.4	-0.01	13.5	0.20
Aragón	1,093.9	-0.8	-0.07	-0.4	-0.04
Asturias, Principado de	902.2	-1.9	-0.21	-4.8	-0.53
Balears, Illes	953.9	2.0	0.22	11.1	1.17
Canarias	1,816.6	5.3	0.29	19.5	1.08
Cantabria	491.5	-0.3	-0.05	-0.2	-0.03
Castilla y León	2,067.5	-4.9	-0.24	-13.0	-0.63
Castilla-La Mancha	1,677.9	-1.8	-0.11	-3.4	-0.20
Cataluña	6,119.4	9.0	0.15	30.6	0.50
Comunitat Valenciana	4,111.1	4.8	0.12	15.1	0.37
Extremadura	905.3	-2.0	-0.22	-4.3	-0.48
Galicia	2,343.9	-3.4	-0.14	-5.5	-0.23
Madrid, Comunidad de	5,328.0	13.5	0.25	48.9	0.93
Murcia, Región de	1,191.1	1.1	0.09	7.4	0.63
Navarra, Comunidad Foral de	524.7	0.7	0.13	3.1	0.59
País Vasco	1,815.9	0.2	0.01	5.5	0.30
Rioja, La	258.9	-0.2	-0.07	0.0	-0.01
Ceuta	65.2	0.1	0.14	0.4	0.64
Melilla	62.1	0.0	0.05	0.0	0.07

2. Active population

TOTAL	22,727.6	34.3	0.15	-148.0	-0.65
Andalucía	3,962.1	-18.7	-0.47	-31.6	-0.79
Aragón	643.1	-0.2	-0.03	-8.3	-1.28
Asturias, Principado de	461.5	2.0	0.43	-11.2	-2.37
Balears, Illes	626.5	38.5	6.54	-2.5	-0.40
Canarias	1,094.6	5.2	0.48	-6.1	-0.56
Cantabria	274.6	1.0	0.36	-1.5	-0.54
Castilla y León	1,139.8	9.7	0.86	-7.3	-0.64
Castilla-La Mancha	986.0	-8.3	-0.83	2.7	0.27
Cataluña	3,767.9	-6.7	-0.18	-17.0	-0.45
Comunitat Valenciana	2,418.3	-5.4	-0.22	-20.9	-0.86
Extremadura	500.5	3.9	0.79	-0.6	-0.11
Galicia	1,250.3	-0.4	-0.03	-6.6	-0.52
Madrid, Comunidad de	3,337.4	6.6	0.20	-42.8	-1.27
Murcia, Región de	709.9	2.2	0.31	8.3	1.18
Navarra, Comunidad Foral de	312.7	5.2	1.68	14.5	4.87
País Vasco	1,017.6	2.8	0.28	-11.8	-1.15
Rioja, La	152.2	-2.1	-1.34	-3.5	-2.25
Ceuta	34.9	-2.6	-6.91	-3.3	(:)
Melilla	37.4	1.5	4.08	1.5	(:)

* Data below 5000 are subject to strong variations, due to sampling error

(:) The variation percentages calculated from low figures with high sampling errors are not significant

Results by Autonomous Communities and Cities (Conclusion)

	Current quarter	Variation on previous quarter		Variation on same quarter, previous year	
		Difference	Percentage	Difference	Percentage
3. Employed					
TOTAL	18,813.3	375.0	2.03	512.3	2.80
Andalucía	2,961.9	53.5	1.84	129.2	4.56
Aragón	569.8	12.2	2.20	17.9	3.25
Asturias, Principado de	401.4	7.2	1.84	19.8	5.20
Balears, Illes	554.5	65.0	13.29	7.4	1.35
Canarias	828.6	19.0	2.34	28.7	3.59
Cantabria	236.1	1.0	0.41	2.2	0.95
Castilla y León	975.1	16.0	1.67	14.5	1.51
Castilla-La Mancha	766.8	-4.1	-0.53	18.7	2.50
Cataluña	3,270.5	72.6	2.27	89.2	2.81
Comunitat Valenciana	1,966.6	22.1	1.14	47.0	2.45
Extremadura	371.6	20.2	5.74	5.8	1.59
Galicia	1,048.9	15.3	1.48	14.9	1.44
Madrid, Comunidad de	2,902.2	45.5	1.59	71.2	2.52
Murcia, Región de	585.8	15.0	2.63	15.4	2.70
Navarra, Comunidad Foral de	279.7	3.7	1.33	21.1	8.16
País Vasco	903.4	8.9	1.00	2.6	0.29
Rioja, La	135.6	1.2	0.93	3.7	2.78
Ceuta	28.7	-0.1	-0.23	0.6	1.99
Melilla	26.1	0.8	2.97	2.3	9.88

4. Unemployed

TOTAL	3,914.3	-340.7	-8.01	-660.4	-14.44
Andalucía	1,000.2	-72.2	-6.73	-160.8	-13.85
Aragón	73.2	-12.4	-14.51	-26.2	-26.37
Asturias, Principado de	60.2	-5.3	-8.04	-31.0	-34.03
Balears, Illes	72.0	-26.6	-26.95	-9.9	-12.12
Canarias	266.0	-13.8	-4.92	-34.8	-11.57
Cantabria	38.5	0.0	0.11	-3.7	-8.82
Castilla y León	164.7	-6.3	-3.69	-21.8	-11.67
Castilla-La Mancha	219.3	-4.2	-1.88	-16.0	-6.81
Cataluña	497.4	-79.2	-13.74	-106.2	-17.59
Comunitat Valenciana	451.7	-27.5	-5.74	-67.9	-13.07
Extremadura	128.9	-16.2	-11.18	-6.4	-4.71
Galicia	201.5	-15.7	-7.22	-21.5	-9.63
Madrid, Comunidad de	435.2	-38.9	-8.21	-114.1	-20.77
Murcia, Región de	124.1	-12.8	-9.36	-7.2	-5.46
Navarra, Comunidad Foral de	33.0	1.5	4.72	-6.6	-16.60
País Vasco	114.3	-6.1	-5.06	-14.4	-11.19
Rioja, La	16.6	-3.3	-16.64	-7.2	(:)
Ceuta	6.2	-2.5	-28.93	-3.8	(:)
Melilla	11.3	0.7	6.75	-0.9	(:)

* Data below 5,000 are subject to strong variations, due to sampling error

(:) The variation percentages calculated from low figures with high sampling errors are not significant

Results by Autonomous Communities and Cities

(Absolute figures in thousands and rates in percentage)

5. Employed and unemployed by sex. Activity and unemployment rates

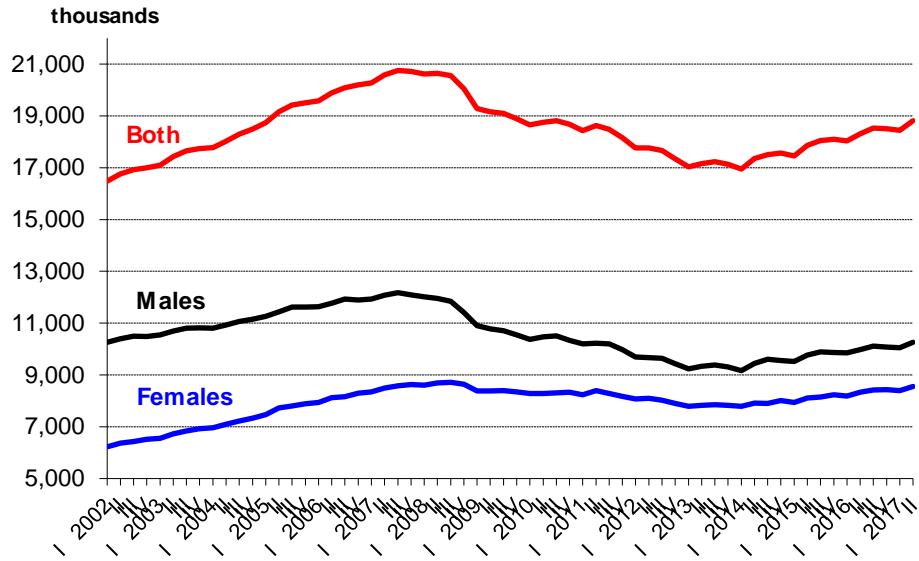
	Both sexes				Males				Females			
	Employed	Unemployed	Activity rate	Unem. rate	Employed	Unemployed	Activity rate	Unem. Rate	Employed	Unemployed	Activity rate	Unem. Rate
TOTAL	18,813.3	3,914.3	58.84	17.22	10,256.9	1,901.4	64.70	15.64	8,556.4	2,012.9	53.28	19.04
Andalucía	2,961.9	1,000.2	57.42	25.24	1,669.6	506.9	64.41	23.29	1,292.3	493.3	50.72	27.63
Aragón	569.8	73.2	58.79	11.39	319.4	28.7	64.75	8.25	250.5	44.5	53.03	15.09
Asturias, Principado de	401.4	60.2	51.15	13.03	210.0	29.4	55.94	12.30	191.4	30.7	46.84	13.83
Balears, Illes	554.5	72.0	65.68	11.49	301.5	37.1	71.66	10.97	253.1	34.9	59.81	12.10
Canarias	828.6	266.0	60.26	24.30	452.2	128.5	64.86	22.12	376.4	137.5	55.78	26.76
Cantabria	236.1	38.5	55.87	14.03	125.9	19.9	61.25	13.66	110.2	18.6	50.83	14.45
Castilla y León	975.1	164.7	55.13	14.45	543.9	78.6	61.13	12.62	431.2	86.1	49.31	16.65
Castilla-La Mancha	766.8	219.3	58.77	22.24	455.3	103.1	66.44	18.47	311.5	116.1	51.07	27.16
Cataluña	3,270.5	497.4	61.57	13.20	1,729.0	243.1	66.52	12.33	1,541.5	254.4	56.93	14.16
Comunitat Valenciana	1,966.6	451.7	58.82	18.68	1,100.4	211.7	65.26	16.13	866.2	240.0	52.66	21.70
Extremadura	371.6	128.9	55.28	25.76	216.8	60.8	61.98	21.90	154.7	68.1	48.73	30.57
Galicia	1,048.9	201.5	53.34	16.11	550.0	99.6	57.91	15.33	498.9	101.9	49.15	16.96
Madrid, Comunidad de	2,902.2	435.2	62.64	13.04	1,498.3	219.5	68.04	12.78	1,403.9	215.7	57.77	13.32
Murcia, Región de	585.8	124.1	59.60	17.47	337.7	54.7	66.27	13.94	248.2	69.3	53.01	21.84
Navarra, Comunidad Foral	279.7	33.0	59.60	10.55	155.6	12.1	64.88	7.20	124.1	20.9	54.47	14.43
País Vasco	903.4	114.3	56.04	11.23	481.3	53.8	61.41	10.05	422.1	60.5	51.09	12.54
Rioja, La	135.6	16.6	58.78	10.92	75.2	6.2	64.21	7.60	60.3	10.4	53.58	14.73
Ceuta	28.7	6.2	53.53	17.79	17.6	2.6	62.29	13.03	11.1	3.6	44.83	24.36
Melilla	26.1	11.3	60.25	30.22	17.2	5.1	71.52	22.79	8.9	6.2	48.88	41.19

* Data below 5,000 are subject to strong variations, due to sampling errors

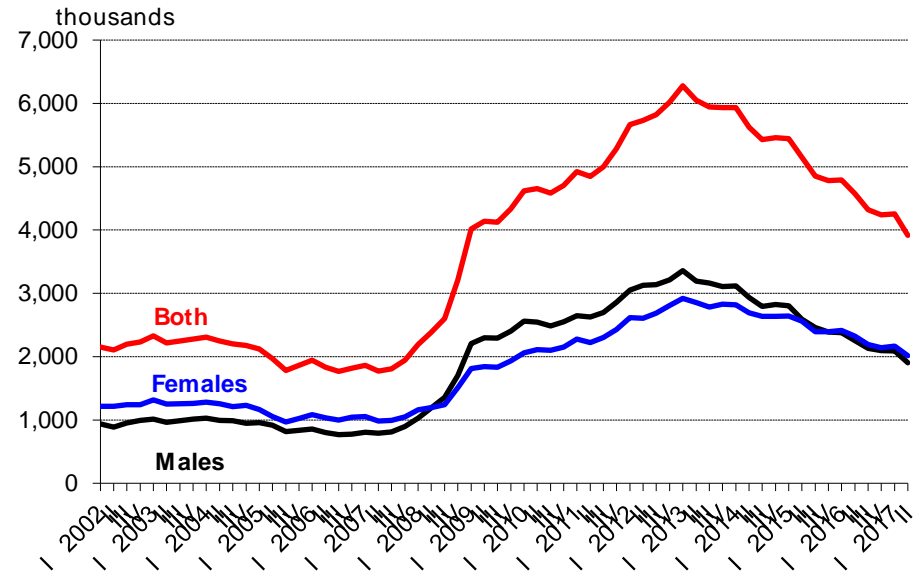
Employed and unemployed by sex

APS Second Quarter 2017

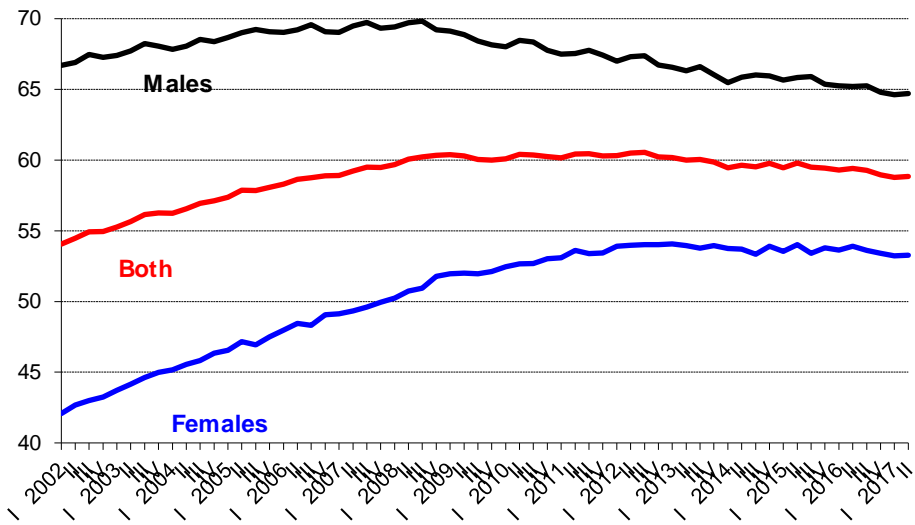
Employment



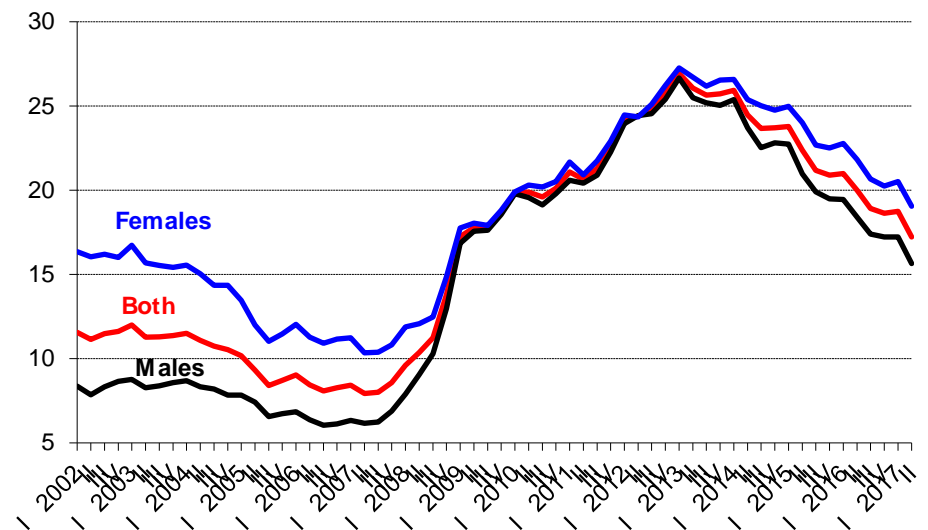
Unemployment



Activity rate



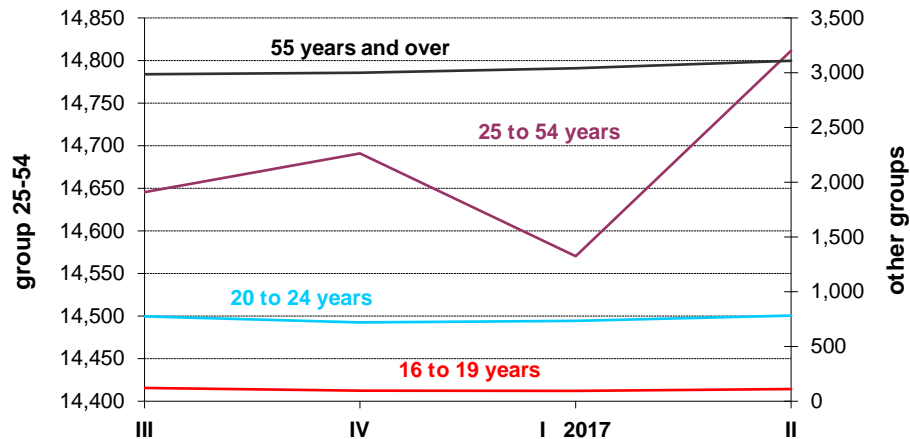
Unemployment rate



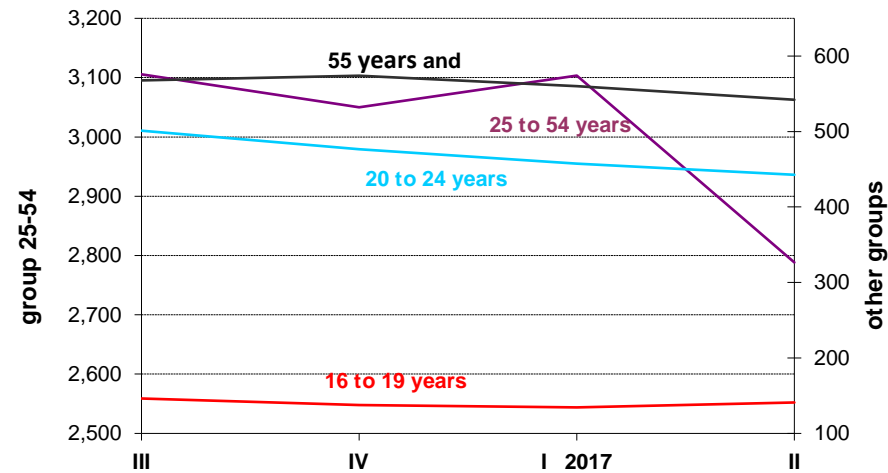
Employed and Unemployed by age

APS Second Quarter 2017

Employment (thousands)

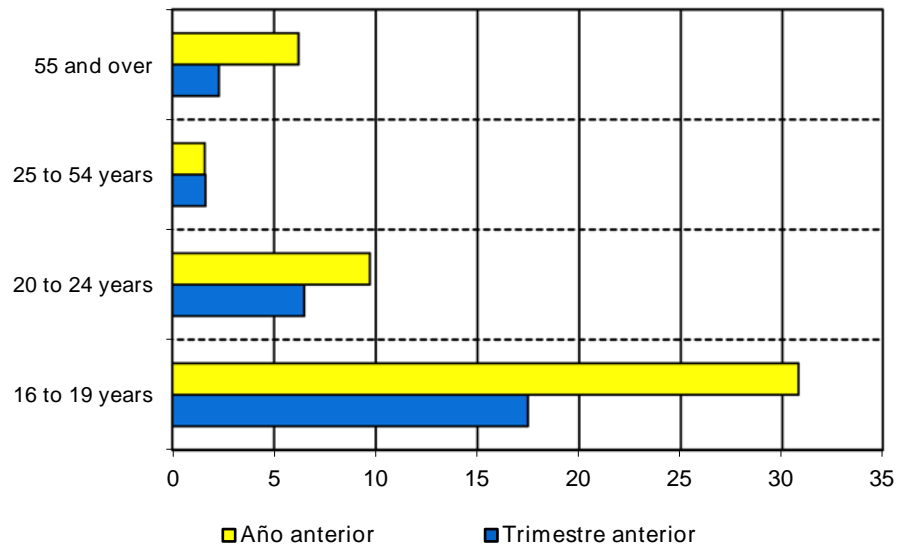


Unemployment (thousands)

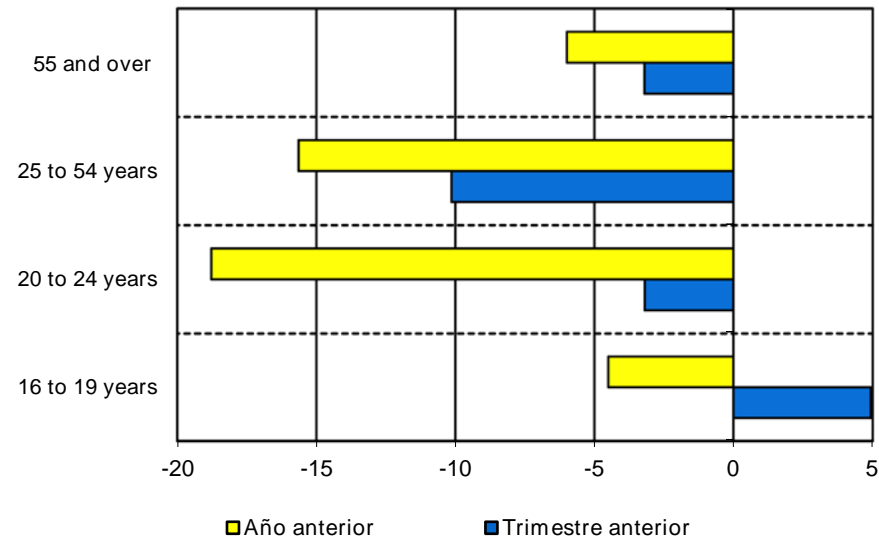


Variation percentages over the previous quarter and over the same quarter of the previous year

Employment

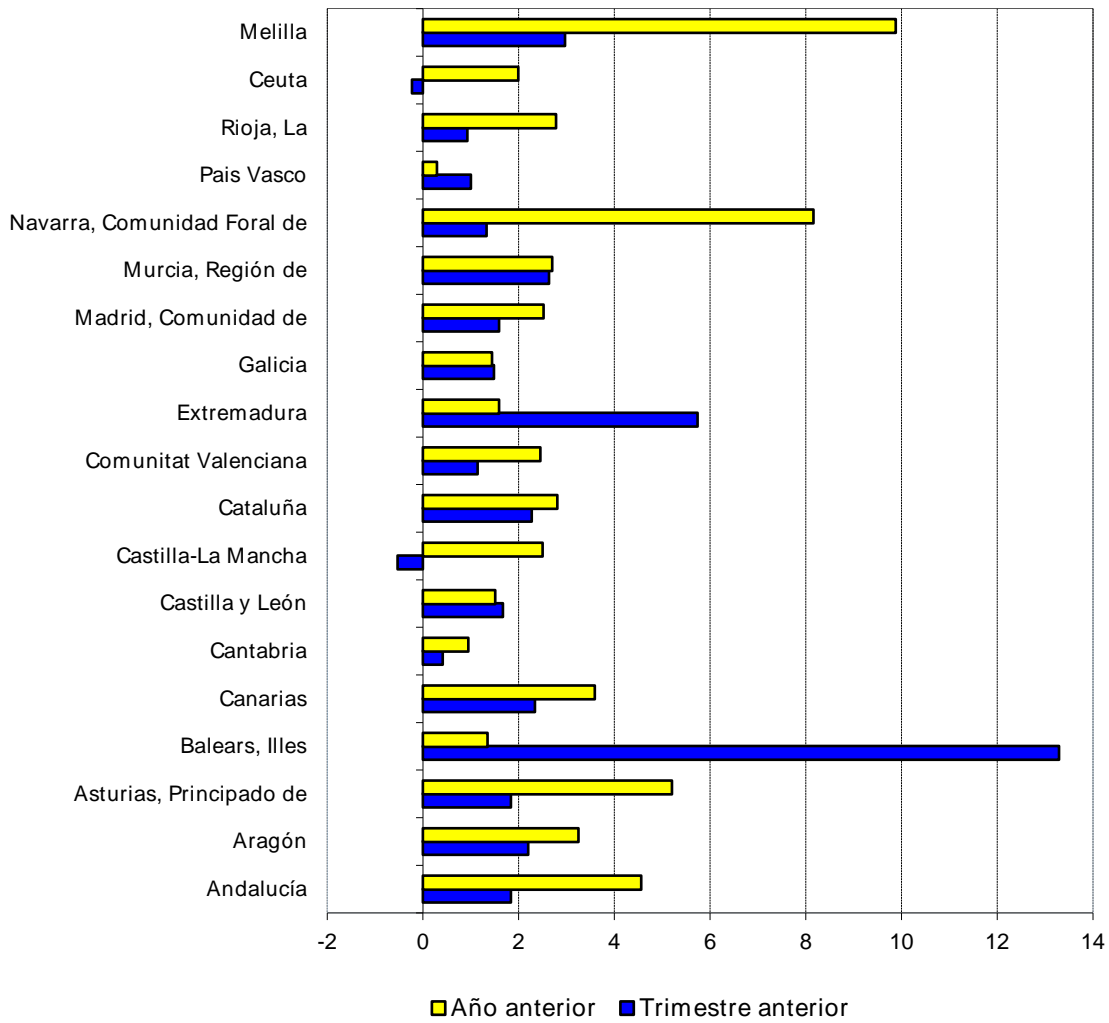


Unemployment



Employment variation percentages over the previous quarter and over the same quarter of the previous year

Second Quarter 2017



Unemployment rate (Spain = 17.22)

