

## Economically Active Population Survey (EAPS) Third quarter of 2008

### Main results

- The number of employed persons in the third quarter of 2008 stands at 20,346,300 (78,800 fewer than in the previous quarter). In the last year, employment has decreased by 164,300 persons. The interannual employment growth rate stands at -0.80%.
- The activity rate is 59.95%, 19 hundredths more than in the second quarter of the year. For men, the rate is 69.81% (17 hundredths higher than the previous quarter), while the rate for women is 50.46% (21 hundredths higher).
- The number of unemployed persons increases by 217,200 persons as compared with the previous quarter, standing at 2,598,800. The unemployment rate increases 88 hundredths, reaching 11.33%. The number of unemployed persons has increased by 806,900 persons during the last 12 months.
- The total number of wage earners decreases by 106,800 persons as compared with the previous quarter, and stands at 16,746,200. In the past year, the number of wage earners has decreased by 123,600 persons. Wage earners with a permanent contract decrease by 99,100 persons this quarter, while temporary wage earners decrease by 7,700 persons. The temporary employment rate stands at 29.53%, with an increase of 14 hundredths as compared with the previous quarter.
- The Autonomous Communities with the greatest increases in employment this quarter are Comunidad de Madrid (26,100), Castilla y León and Galicia (13,700 each). The greatest decreases are recorded in Cataluña (54,400 fewer employed persons), Andalucía (40,400) and Comunitat Valenciana (25,000).
- The greatest increases in unemployment are produced in Andalucía (86,600), Cataluña (50,700), Región de Murcia (20,100), Comunitat Valenciana (19,600) and Canarias (16,900). The only appreciable decrease in the number of unemployed persons this quarter is registered in Comunidad de Madrid (11,800 fewer unemployed persons).
- **Since 2008, the EAPS has coded economic activity with the new NACE-2009 Activities Classification. During the four quarters of 2008, a double coding will be done of the activity, also incorporating the NACE-1993 code used in the survey up until the fourth quarter 2007, in order to enable comparisons with previous quarters. In the annex to this press release, additional information can be consulted regarding the new classification.**

## **The number of active persons in Spain stands at 22,945,100 persons**

The total number of active persons reached 22,945,100 in the third quarter of 2008, with an increase of 138,400 persons as compared with the previous quarter. The activity rate was 59.95%, that is, 19 hundredths more than in the previous quarter.

The number of active women increased by 68,200 persons this quarter, standing at 9,832,600. The female activity rate increased 21 hundredths, reaching 50.46%. On the other hand, the number of active men stood at 13,112,500, with an increase of 70,200 persons. The male activity rate increased 17 hundredths this quarter, standing at 69.81%.

During the past 12 months, the number of active persons increased by 642,600 persons, of whom 420,700 were women.

The activity rate for the foreign population (76.36%) decreased 36 hundredths this quarter, while that of the Spanish population rose 23 hundredths to 57.67%. The difference between the two activities rates remained at more than 18 points. To a large extent, the age structure of the foreign nationals explained this difference.

## **Employment decreases by 78,800 persons this quarter, to 20,346,300**

The number of employed persons stood at 20,346,300 persons, 78,800 fewer than in the second quarter of the year. In the last 12 months, the number of employed persons decreased by 164,300 persons.

The interannual employment rate was -0.80%, that is, 1.08 points lower than the previous quarter (0.28%). This was the first decrease in the number of employed persons, in interannual terms, since the year 1994.

Employment increased for women (21,700 more employed women than in the previous quarter), but decreased for men (by 100,500 men). In the past 12 months, employment also grew for women (166,500 more) and decreased for men (330,700 fewer).

The number of employed Spaniards decreased by 83,600 persons in the last three months, while the number of employed foreign nationals rose by 4,800 persons. In the third quarter of 2008, 14.49% of the total employed persons were foreign nationals.

Increases in employment this quarter were recorded in the youngest age groups (48,200 more employed persons among youths aged 16 to 19 years old, and 40,100 more among youths aged 20 to 24). In contrast, the most significant decrease in unemployment was recorded among persons aged 25 to 29 years old (83,300 fewer employed persons).

Regarding quarter-on-quarter evolution by sector<sup>1</sup>, the number of persons employed in agriculture decreased by 31,900 persons, to stand at 849,000. Those employed in industry decreased by 45,600 persons, to a total of 3,227,700. In the construction sector, this third quarter of the year recorded a decrease of 134,800 persons in the number of employed persons, with employment in the sector standing at 2,363,300. Lastly, the number of those employed in services stood at 13,906,400, with an increase of 133,400 employed persons as compared with the previous quarter.

By interannual variation, employment decreased by 354,200 persons in construction (-13.03%), by 36,300 in agriculture (-4.10%), and by 31,200 in industry (-0.96%). In turn, the number of employed persons increased by 257,600 persons in services (1.89%).

---

<sup>1</sup> According to the NACE-1993 classification of activities

## **The number of wage earners with permanent contracts decreases by 99,100 persons**

The total number of wage earners in the third quarter was 16,746,200 persons, with a decrease of 106,800 persons as compared with the previous quarter. The number of wage earners with permanent contracts dropped by 99,100 persons, to stand at 11,801,400. Wage earners with temporary contracts decreased by 7,700 persons, to a total of 4,944,700.

The temporary employment rate stood at 29.54%, with an increase of 14 hundredths as compared with the previous quarter.

In the past 12 months, the total wage earners decreased by 123,600 persons. Wage earners with a permanent contract increased by 320,200 persons, while wage earners with a temporary contract decreased by 443,800 persons.

The salary rate rose two tenths, standing at 82.31%.

Regarding the **working day**, during this quarter, 2,323,900 part-time employed persons were registered, of whom 1,842,700 were women. Part-time employment decreased for both women (112,300 fewer) and men (13,000 fewer).

Full-time employed persons increased by 46,500 as compared with the previous quarter. The number of women increased by 134,500, while the number of men decreased by 87,400.

The percentage of part-time employed persons was 11.42%, more than one half of a point lower than the previous quarter (which was 11.99%).

## **Unemployment increases by 217,200 persons, and the unemployment rate stands at 11.33%**

Unemployment grew by 217,200 persons in the third quarter of 2008. The total number of unemployed persons stood at 2,598,800, with an increase of 806,900 in the last 12 months.

The unemployment rate increased 88 hundredths and reached 11.33% of the active population.

Unemployment increased more for men (170,700) than for women (46,600). The male unemployment rate was 10.32%, that is, 1.25 points higher than in the second quarter of 2008. The female rate increased 39 hundredths, standing at 12.66%. In recent quarters, the two rates have progressively converged. The number of unemployed men surpassed that of women for the first time since 1994.

Unemployment grew by 174,100 persons among Spaniards and by 43,100 persons among foreign nationals. The unemployment rate for Spaniards was 10.20% (86 hundredths higher than the previous quarter), and that for foreign nationals was 17.45% (0.99 points higher).

Unemployment increased for all age groups this quarter. The greatest increase in absolute value was among persons aged 25 to 54 years old, with 169,300 more unemployed persons.

Regarding quarter-on-quarter evolution by sector<sup>2</sup>, unemployment rose in all of them. Construction registered 57,600 more unemployed persons, the services sector registered 47,700, industry 27,200 and agriculture 26,900. The number of unemployed persons also

---

<sup>2</sup> According to the NACE-1993 classification of activities

grew, among those who lost their jobs more than one year ago (by 22,900 persons), and among those seeking their first job (by 34,900).

The interannual comparison also showed growth in unemployment in all sectors, with increases of 256,100 unemployed persons in construction, 232,200 in services, 76,800 in industry and 46,800 in agriculture. Unemployment rose as well among those seeking their first job (by 47,200 persons), and among long-term unemployed persons (by 147,800).

The unemployment rate for the household reference person rose 86 hundredths and stood at 8.72%. That of the spouse or partner increased 66 hundredths to 9.72%, and that of children increased 1.22 points, to 17.92%.

### **The number of households in which all active members are unemployed increases by 84,300 households**

In the third quarter of 2008, the number of households with all active members working stood at 10,483,800, that is, 70,300 fewer than the previous quarter and 213,900 fewer than one year prior.

The number of households with all active members unemployed increased by 84,300 as compared with the previous quarter. In the past 12 months, this number increased by 258,800 households.

### **Mobility as related to activity**

In terms of inter-quarterly mobility in relation to activity, it could be seen that the proportion of unemployed persons who were employed three months ago was 29.88%, that is, 87 hundredths greater than in the second quarter of 2008.

The percentage of employed persons who were also employed in the previous quarter stood at 93.11%, in other words eight tenths lower than three months ago.

The percentage of employed persons who were unemployed in the second quarter was 3.45%, that is, 21 hundredths greater than that recorded in the previous quarter. The percentage of employed persons who were previously inactive was 3.45%, half a point higher than for the second quarter.

The percentage of inactive persons who were employed in the previous quarter rose 86 hundredths, to 4.86%.

The likelihood of remaining unemployed was 44.60%, representing an increase of more than one point as compared with the second quarter of the year, while the likelihood of remaining inactive was 91.93%, with a decrease of 1.3 points as compared with three months ago.

### **Results by Autonomous Community**

The greatest increases in the number of **active persons** this quarter were in Andalucía (46,100), Galicia (17,000), Illes Balears (16,000), Castilla y León (15,900) and Comunidad de Madrid (14,300).

There were slight decreases in the number of active persons in Comunitat Valenciana (5,400 fewer active persons) and Cataluña (3,700).

In terms of **employment**, the greatest increases as compared with the previous quarter in absolute values were in Comunidad de Madrid (26,100 more employed persons) and in Galicia and Castilla y León (13,700 more each).

The greatest decreases in employed persons in the third quarter of 2008 were in Cataluña (54,400 fewer employed persons), Andalucía (40,400) and Comunitat Valenciana (25,000).

In the last year, the greatest increases in employment were in Principado de Asturias (21,300), País Vasco (17,800) and Comunidad de Madrid (15,100). The greatest decreases were in Andalucía (88,400 fewer employed persons), Canarias (48,500) and Cataluña (30,100).

In terms of **unemployment**, the greatest rises this quarter were in Andalucía (86,600), Cataluña (50,700) and Región de Murcia (20,100). The only appreciable decrease in unemployment was in Comunidad de Madrid (11,800 fewer unemployed persons).

In the last 12 months, unemployment has increased in all Autonomous Communities. The greatest increases were in Andalucía (240,400 more), Comunitat Valenciana (99,400) and Cataluña (88,000).

Aragón (6.23%), País Vasco (6.27%) and Cantabria (6.34%) were the Autonomous Communities with the lowest **unemployment rates** in the third quarter of 2008. The highest unemployment rates were recorded in Andalucía (18.33%), Canarias (17.50%) and Extremadura (14.60%).

The lowest female employment rates were in País Vasco (7.04%), Aragón (7.27%) and Cantabria (7.42%).

This quarter, Cataluña showed an unemployment rate 1.23 points below that of males, and that of Comunidad de Madrid was only 38 hundredths higher. These were the two Communities with the most similar rates by sex. Conversely, the female unemployment rate in Extremadura was almost twice that of men (20.71% as compared with 10.47%) and that of Andalucía and Castilla – La Mancha were 6.85 and 6.01 points higher, respectively.

The Autonomous Communities with the highest **activity rates** in the third quarter of 2008 were Illes Balears (67.03%), Comunidad de Madrid (64.70%) and Cataluña (63.12%).

The lowest activity rates this quarter were in Principado de Asturias (53.53%), Extremadura (54.00%) and Castilla y León (54.94%).

## Results by province

As of this quarter<sup>3</sup> the provincial results provided in this Press Release appear on the INE website, along with the results tables which are usually published.

This information is available from the EAPS (Provincial Results Summary), at the following link:

<http://www.ine.es/daco/daco42/daco4211/epapro0308.pdf>

---

<sup>3</sup> By virtue of the *Multilateral Employment Agreement between the Spanish National Statistics Institute (INE) and the central statistical bodies of the Autonomous Communities for bringing about partnership on the subject of statistics*

All the provincial information from this survey is also available at the following links:

In the INEbase database:

<http://www.ine.es/jaxiBD/menu.do?L=0&divi=EPA&his=0&type=db>

In the TEMPUS database:

<http://www.ine.es/menu/redir/GSTConsul.shtml?divi=EPA>

---

For further information see **INEbase-[www.ine.es](http://www.ine.es)** All press releases at: **[www.ine.es/prensa/prensa.htm](http://www.ine.es/prensa/prensa.htm)**

**Press office:** Telephone numbers: 91 583 93 63 / 94 08 – Fax: 91 583 90 87 - **[gprensa@ine.es](mailto:gprensa@ine.es)**

**Information area:** Telephone: 91 583 91 00 – Fax: 91 583 91 58 – **[www.ine.es/infoine](http://www.ine.es/infoine)**

---



## Methodological note

### General characteristics

The Economically Active Population Survey is a continuous, sample-based study, aimed at family dwellings, and which has been conducted since 1964.

3,588 census sections are chosen for this survey, among the more than 30,000 into which Spain is divided. On average, 18 households are surveyed in each of them, except in Barcelona, Madrid, Sevilla, Valencia and Zaragoza, where the number of interviews is 22. Thus, the sample size is approximately 65,000 dwellings, providing information on some 180,000 persons. This data is collected through personal and telephone interviews, conducted by National Statistics Institute interviewers, attached to the provincial delegations thereof. The information is carefully filtered and processed using computer means. Results are obtained within the month after the end of the reference quarter for the data.

### Main definitions

**Active persons:** persons aged 16 or over who, during the reference week (the week prior to that in which the interview is held), supplied labour for the production of economic goods and services, or were available to do so and carried out actions to incorporate themselves into said production. They are divided into employed and unemployed persons.

**Employed persons:** persons aged 16 or over who, during the reference week, worked for at least one hour, in exchange for payment (salary, wage, business benefit, etc.) in cash or in kind. Persons who, having a job, had been temporarily absent from it due to illnesses, vacation, etc. are also employed persons.

Employed persons are classified, considering their professional status, as non-wage earners (employers, businessmen without wage earners, and independent workers, cooperative members, family assistance) and wage earners (public or private).

Considering the length of the working day, employed persons are classified as full-time and part-time employed persons. The usual working week cannot be shorter than 30 hours in the first case, nor exceed 35 hours in the second.

Wage earners are classified into permanent and temporary. For the latter, the end of their contract or work relationship is set by means of objective conditions, such as the expiry of a certain period of time, the completion of a specific task, etc.

A significant category within employment is that of **time-related underemployment**, defined in the 16th International Labour Statisticians Conference (Geneva, 1998). The EAPS considers persons suffering time-related underemployment as employed persons who would like to work more hours, who are available to work more hours and whose effective working hours in the reference week are less than the number of hours usually worked by employed persons working full-time in the same branch of activity as that in which the underemployed person performs his or her main job.

**Unemployed persons:** Individuals, aged 16 or over who, during the reference week, were jobless, available for work, and actively looking for a job. Persons who might have already found a job and are waiting to start, are also considered as unemployed, provided that they fulfil the first two conditions.

According to European Commission Regulation 1897/2000, the following are considered as active search methods in the four weeks prior to the interview:

- Being in contact with a public employment office for the purpose of finding work, whatever part they play in the initiative (the renewal of registration due to purely administrative reasons does not constitute active planning).
- Being in contact with a private office (temporary employment office, specialised contracting company, ...) with the objective of finding work.
- Having sent an application directly to employers.
- Having searched via personal relations and trade unions, ....
- Having advertised oneself or responded to newspaper advertisements.
- Having studied employment offers.
- Having taken part in a test, public exam or interview in the framework of a contracting procedure.
- Having looked for land, premises or material.
- Having taken steps to obtain permits, licences or financial resources.

**Inactive persons:** Individuals aged 16 or over not included in any of the above categories.



## Annex

### **Note on the use of the new National Classification of Economic Activities NACE-2009 in the coding of the Economically Active Population Survey (EAPS) since the first quarter of 2008**

Adaptation to the European Union new classification of economic activities has led to a new coding of the variables for the Economically Active Population Survey relating to the branch of activity as of the first quarter of 2008.

The variables affected by this new coding are as follows:

- Activity of the main job of employed persons
- Activity of the second job (employed persons with more than one job)
- Activity in the last job (unemployed and inactive persons who left their last job less than one year ago)

This implies that several branches of activity have come to form part of different sectors. Thus, to quote a few examples, the "Maintenance of gardens" branch of activity, which was until now classified as part of the agricultural sector, has now become a part of the services sector. The "Development and selling of real estate" branch has gone from the services sector to the construction sector. "Collection and treatment of waste water" has gone from the services sector to industry, and conversely, "Publishing" has gone from industry to services.

At the following link on the INE website, complete information is available regarding all the changes arising from the new coding of branches of activity:

[http://www.ine.es/daco/daco42/clasificaciones/rev.1/correspondencia\\_cnae.pdf](http://www.ine.es/daco/daco42/clasificaciones/rev.1/correspondencia_cnae.pdf)

### **Origin of the new coding**

The current classification of economic activities for statistical purposes within the European Union, known as NACE Rev.2, was approved by Council and Parliament Regulation No.1893/2006, of 20 December. In order to ensure harmonised implementation of the classification in all Member States, **European Commission Regulation No.973/2007 of 20 August was approved; this stipulated the use of the aforementioned Classification in the Community Labour Force Survey (taken in Spain from the Economically Active Population Survey) beginning in the year 2008.**

The Member States, in order to be able to adapt the European classification to their reality, have compiled national versions which must be compatible with NACE Rev.2. The National Classification of Economic Activities NACE-2009, approved in Royal Decree 475/2007 of 13 April 2007 (Official Spanish Gazette of 28 April 2007), is the national version of NACE Rev. 2 in Spain.

Therefore, the variables for the Economically Active Population Survey relating to the branch of activity are now coded in accordance with the new NACE-2009.

### **Information link**

In order to provide sufficient information to link the old classification to the new one, the INE will carry out double activity coding over the four quarters of 2008, in order to be able to continue as of 2009 solely with the new classification.

In this way, tables by economic activity may only be calculated in accordance with both classifications and have a link year between the two. On the INE website (specifically, in the INEbase database) results will be published from the old and new classifications for the four quarters of 2008.

Similarly, in the EAPS press releases in which information appears by economic sector, both classifications will also be used throughout this year.

## Economically Active Population Survey Third Quarter 2008

### National results

(Continues)

	Current quarter	Variation on previous quarter		Variation on same quarter, previous year	
		Difference	Percentage	Difference	Percentage
<b>1. Population aged 16 years and over by sex and labour status</b>					
BOTH SEXES					
<b>Population aged 16 years and over</b>	38,270.7	109.2	0.29	536.8	1.42
Active population	22,945.1	138.4	0.61	642.6	2.88
- Employed	20,346.3	-78.8	-0.39	-164.3	-0.80
- Unemployed	2,598.8	217.2	9.12	806.9	45.03
Inactive	15,325.6	-29.2	-0.19	-105.8	-0.69
Activity rate	59.95	0.19	-	0.85	-
Unemployment rate	11.33	0.88	-	3.29	-
<b>Population aged 16 to 64 years</b>	30,841.9	81.5	0.26	425.7	1.40
Activity rate (16-64)	73.87	0.24	-	1.04	-
Unemployment rate (16-64)	11.39	0.90	-	3.31	-
Employment rate (16-64)	65.46	-0.44	-	-1.49	-
MALES					
<b>Population aged 16 years and over</b>	18,783.5	54.0	0.29	264.7	1.43
Active population	13,112.5	70.2	0.54	221.9	1.72
- Employed	11,758.9	-100.5	-0.85	-330.7	-2.74
- Unemployed	1,353.6	170.7	14.43	552.6	69.00
Inactive	5,671.0	-16.2	-0.28	42.8	0.76
Activity rate	69.81	0.17	-	0.20	-
Unemployment rate	10.32	1.25	-	4.11	-
<b>Population aged 16 to 64 years</b>	15,606.6	41.1	0.26	212.8	1.38
Activity rate (16-64)	83.38	0.25	-	0.30	-
Unemployment rate (16-64)	10.40	1.28	-	4.14	-
Employment rate (16-64)	74.71	-0.83	-	-3.17	-
FEMALES					
<b>Population aged 16 years and over</b>	19,487.2	55.2	0.28	272.1	1.42
Active population	9,832.6	68.2	0.70	420.7	4.47
- Employed	8,587.4	21.7	0.25	166.5	1.98
- Unemployed	1,245.2	46.6	3.88	254.2	25.66
Inactive	9,654.6	-13.0	-0.13	-148.6	-1.52
Activity rate	50.46	0.21	-	1.47	-
Unemployment rate	12.66	0.39	-	2.14	-
<b>Population aged 16 to 64 years</b>	15,235.3	40.4	0.27	212.9	1.42
Activity rate (16-64)	64.12	0.23	-	1.79	-
Unemployment rate (16-64)	12.71	0.39	-	2.14	-
Employment rate (16-64)	55.97	-0.05	-	0.23	-

### 2. Spanish population<sup>1</sup> aged 16 years and over by labour status

SPANISH POPULATION AGED 16 YEARS AND OVER	33,593.8	24.8	0.07	95.5	0.29
Active population	19,374.1	90.5	0.47	298.0	1.56
- Employed	17,398.4	-83.6	-0.48	-265.8	-1.50
- Unemployed	1,975.6	174.1	9.66	563.8	39.93
Inactive	14,219.7	-65.7	-0.46	-202.5	-1.40
Activity rate	57.67	0.23	-	0.73	-
Unemployment rate	10.20	0.86	-	2.80	-

<sup>1</sup> including dual nationality

## National results

(Continuation)

	Current quarter	Variation on previous quarter		Variation on same quarter, previous year	
		Difference	Percentage	Difference	Percentage
<b>3. Foreign population aged 16 years and over by labour status</b>					
FOREIGN POPULATION AGED 16 YEARS AND OVER	4,676.8	84.4	1.84	441.3	10.42
Active population	3,571.0	47.9	1.36	344.6	10.68
- Employed	2,947.9	4.8	0.16	101.5	3.57
- Unemployed	623.1	43.1	7.43	243.1	63.98
Inactive	1,105.8	36.5	3.41	96.7	9.58
Activity rate	76.36	-0.36	-	0.18	-
Unemployment rate	17.45	0.99	-	5.67	-
<b>4. Employed by sex, age group and economic sector</b>					
BOTH SEXES	20,346.3	-78.8	-0.39	-164.3	-0.80
16 to 19 years	366.6	48.2	15.13	-77.5	-17.44
20 to 24 years	1,550.5	40.1	2.65	-98.8	-5.99
25 to 29 years	2,657.6	-83.3	-3.04	-201.6	-7.05
30 to 34 years	3,190.8	-31.8	-0.99	-17.4	-0.54
35 to 39 years	2,986.7	-13.6	-0.45	24.6	0.83
40 to 44 years	2,763.9	-29.3	-1.05	-2.1	-0.08
45 to 49 years	2,485.4	-3.4	-0.13	66.9	2.77
50 to 54 years	1,960.0	-4.0	-0.20	33.6	1.74
55 and over	2,384.7	-1.8	-0.07	108.0	4.74
MALES	11,758.9	-100.5	-0.85	-330.7	-2.74
16 to 19 years	221.5	21.4	10.69	-54.2	-19.66
20 to 24 years	847.6	19.3	2.33	-75.3	-8.16
25 to 29 years	1,424.9	-53.9	-3.65	-162.4	-10.23
30 to 34 years	1,809.5	-19.3	-1.05	-37.7	-2.04
35 to 39 years	1,724.6	-22.6	-1.29	-34.0	-1.93
40 to 44 years	1,591.0	-25.6	-1.59	-24.8	-1.53
45 to 49 years	1,418.9	-13.5	-0.94	4.3	0.30
50 to 54 years	1,175.0	-3.9	-0.33	10.4	0.90
55 and over	1,546.0	-2.4	-0.15	43.0	2.86
FEMALES	8,587.4	21.7	0.25	166.5	1.98
16 to 19 years	145.2	26.8	22.64	-23.3	-13.82
20 to 24 years	702.9	20.8	3.05	-23.5	-3.23
25 to 29 years	1,232.8	-29.3	-2.33	-39.2	-3.08
30 to 34 years	1,381.3	-12.5	-0.90	20.3	1.49
35 to 39 years	1,262.1	9.0	0.72	58.6	4.87
40 to 44 years	1,172.9	-3.6	-0.31	22.7	1.97
45 to 49 years	1,066.5	10.1	0.96	62.6	6.24
50 to 54 years	785.0	-0.1	-0.01	23.2	3.04
55 and over	838.8	0.6	0.07	64.9	8.39
TOTAL EMPLOYED	20,346.3	-78.8	-0.39	-164.3	-0.80
Agriculture NACE rev1	849.0	-31.9	-3.62	-36.3	-4.10
Industry NACE rev1	3,227.7	-45.6	-1.39	-31.2	-0.96
Construction NACE rev1	2,363.3	-134.8	-5.39	-354.2	-13.03
Services NACE rev1	13,906.4	133.4	0.97	257.6	1.89
TOTAL EMPLOYED	20,346.3	-78.8	-0.39	-164.3	-0.80
Agriculture NACE rev2	787.3	-33.4	-4.07		
Industry NACE rev2	3,195.2	-49.2	-1.52		
Construction NACE rev2	2,413.2	-136.3	-5.35		
Services NACE rev2	13,950.7	140.1	1.01		

**National results**

(Continuation)

	Current quarter	Variation on previous quarter		Variation on same quarter, previous year	
		Difference	Percentage	Difference	Percentage

**5. Employed by professional status, type of contract and working hours**

<b>TOTAL EMPLOYED</b>	20,346.3	-78.8	-0.39	-164.3	-0.80
Self-employed workers	3,584.8	22.8	0.64	-48.2	-1.33
- Employers	1,181.5	6.0	0.51	39.8	3.48
- Independent workers	2,118.9	-5.6	-0.26	-94.1	-4.25
- Cooperatives members	64.3	0.4	0.63	-8.9	-12.11
- Family workers	220.2	22.0	11.08	15.0	7.32
Employees	16,746.2	-106.8	-0.63	-123.6	-0.73
- With a permanent job	11,801.4	-99.1	-0.83	320.2	2.79
- With a temporary job	4,944.7	-7.7	-0.16	-443.8	-8.24
Others	15.3	5.2	51.47	7.6	98.51
<b>FULL-TIME EMPLOYED</b>	18,022.5	46.5	0.26	-211.4	-1.16
Males	11,277.7	-87.4	-0.77	-358.9	-3.08
Females	6,744.8	134.0	2.03	147.5	2.24
<b>PART-TIME EMPLOYED</b>	2,323.9	-125.3	-5.12	47.1	2.07
Males	481.2	-13.0	-2.64	28.2	6.22
Females	1,842.7	-112.3	-5.74	18.9	1.04

**6. Unemployed by sex, age group, and economic sector**

<b>BOTH SEXES</b>	2,598.8	217.2	9.12	806.9	45.03
16 to 19 years	227.6	5.1	2.27	62.2	37.59
20 to 24 years	385.5	34.0	9.67	92.8	31.72
25 to 54 years	1,812.3	169.3	10.30	610.2	50.76
55 and over	173.4	8.9	5.39	41.7	31.68
<b>MALES</b>	1,353.6	170.7	14.43	552.6	69.00
16 to 19 years	120.4	10.9	9.96	39.4	48.56
20 to 24 years	210.5	26.0	14.07	76.1	56.63
25 to 54 years	923.0	130.4	16.45	408.9	79.52
55 and over	99.6	3.4	3.57	28.3	39.72
<b>FEMALES</b>	1,245.2	46.6	3.88	254.2	25.66
16 to 19 years	107.1	-5.8	-5.18	22.8	27.05
20 to 24 years	175.0	8.0	4.82	16.7	10.57
25 to 54 years	889.3	38.9	4.58	201.3	29.26
55 and over	73.8	5.4	7.95	13.4	22.19
<b>TOTAL UNEMPLOYED</b>	2,598.8	217.2	9.12	806.9	45.03
Agriculture NACE rev1	151.9	26.9	21.51	46.8	44.53
Industry NACE rev1	212.2	27.2	14.73	76.8	56.74
Construction NACE rev1	433.3	57.6	15.33	256.1	144.50
Services NACE rev1	934.5	47.7	5.38	232.2	33.06
Lost their job more than 1 year ago	609.5	22.9	3.91	147.8	32.00
First job seekers	257.3	34.9	15.67	47.2	22.49
<b>TOTAL UNEMPLOYED</b>	2,598.8	217.2	9.12	806.9	45.03
Agriculture NACE rev2	145.1	24.2	20.06		
Industry NACE rev2	208.2	24.8	13.50		
Construction NACE rev2	439.7	60.9	16.07		
Services NACE rev2	938.9	49.5	5.57		
Lost their job more than 1 year ago	609.5	22.9	3.91	147.8	32.00
First job seekers	257.3	34.9	15.67	47.2	22.49

## National results

(Conclusion)

	Current quarter	Variation on previous quarter		Variation on same quarter, previous year	
		Difference	Percentage	Difference	Percentage

### 7. Unemployment rate by relationship with the reference person

TOTAL	11.33	0.88	-	3.29	-
Reference person	8.72	0.86	-	2.70	-
Spouse or partner	9.72	0.66	-	2.48	-
Child	17.92	1.22	-	5.05	-
Other relatives	16.73	0.55	-	7.99	-
Unrelated persons	12.70	1.07	-	4.28	-

### 8. Household data

TOTAL HOUSEHOLDS	16,804.9	110.2	0.66	476.3	2.92
Households with at least one active member	12,703.4	63.1	0.50	413.3	3.36
- All member employed	10,483.8	-70.3	-0.67	-213.9	-2.00
- All member unemployed	638.1	84.3	15.21	258.8	68.23
Households without any active population	4,101.5	47.1	1.16	63.0	1.56

### Mobility according to activity in current and previous quarter

Classification in previous quarter	Classification in current quarter			
	Total	Employed	Unemployed	Inactive
<b>BOTH SEXES</b>				
Total	100.00	100.00	100.00	100.00
Employed	53.22	93.11	29.88	4.86
Unemployed	5.97	3.45	44.60	3.21
Inactive	40.81	3.45	25.51	91.93
<b>MALES</b>				
Total	100.00	100.00	100.00	100.00
Employed	63.24	94.39	34.98	5.41
Unemployed	5.82	3.12	45.46	2.81
Inactive	30.94	2.49	19.56	91.78
<b>FEMALES</b>				
Total	100.00	100.00	100.00	100.00
Employed	43.60	91.33	24.64	4.54
Unemployed	6.12	3.89	43.72	3.45
Inactive	50.29	4.77	31.64	92.01

Grossing up factors of current quarter (forward analysis)

## Results by Autonomous Communities

(Continues)

	Current quarter	Variation on previous quarter		Variation on same quarter, previous year	
		Difference	Percentage	Difference	Percentage
<b>1. Population aged 16 years and over</b>					
TOTAL	38,270.7	109.2	0.29	536.8	1.42
Andalucía	6,672.4	22.5	0.34	96.9	1.47
Aragón	1,112.6	3.1	0.28	14.9	1.36
Asturias (Principado de)	936.0	-0.3	-0.04	-1.0	-0.10
Balears (Illes)	879.4	5.5	0.63	24.6	2.87
Canarias	1,716.4	8.5	0.50	37.3	2.22
Cantabria	493.7	1.0	0.21	4.6	0.93
Castilla y León	2,165.3	1.4	0.07	9.9	0.46
Castilla-La Mancha	1,675.3	9.6	0.57	41.8	2.56
Cataluña	6,082.3	6.8	0.11	59.0	0.98
Comunitat Valenciana	4,156.6	20.8	0.50	97.1	2.39
Extremadura	902.6	0.6	0.07	4.0	0.44
Galicia	2,388.3	0.9	0.04	6.4	0.27
Madrid (Comunidad de)	5,208.3	21.4	0.41	100.1	1.96
Murcia (Región de)	1,166.8	6.7	0.58	30.1	2.65
Navarra (Comunidad Foral de)	508.0	1.5	0.29	6.9	1.38
País Vasco	1,831.8	-1.5	-0.08	0.3	0.02
Rioja (La)	265.8	0.6	0.24	3.0	1.13
Ceuta	56.8	0.1	0.21	0.5	0.89
Melilla	52.2	-0.1	-0.11	0.5	0.97

## 2. Active population

TOTAL	22,945.1	138.4	0.61	642.6	2.88
Andalucía	3,844.6	46.1	1.21	152.0	4.12
Aragón	659.3	-0.5	-0.07	6.7	1.02
Asturias (Principado de)	501.1	7.0	1.41	24.8	5.21
Balears (Illes)	589.5	16.0	2.80	27.5	4.89
Canarias	1,045.5	7.4	0.71	24.9	2.44
Cantabria	282.0	2.4	0.84	5.3	1.92
Castilla y León	1,189.6	15.9	1.35	18.8	1.60
Castilla-La Mancha	957.1	2.2	0.23	34.2	3.70
Cataluña	3,838.9	-3.7	-0.10	57.9	1.53
Comunitat Valenciana	2,525.4	-5.4	-0.21	81.2	3.32
Extremadura	487.4	3.7	0.77	10.6	2.21
Galicia	1,326.9	17.0	1.30	24.3	1.87
Madrid (Comunidad de)	3,369.6	14.3	0.42	101.6	3.11
Murcia (Región de)	721.2	2.2	0.30	31.9	4.62
Navarra (Comunidad Foral de)	312.4	3.0	0.97	9.3	3.09
País Vasco	1,074.2	9.4	0.88	21.5	2.04
Rioja (La)	160.3	1.5	0.94	7.8	5.10
Ceuta	31.3	-0.4	-1.26	2.3	7.77
Melilla	28.9	0.5	1.58	0.1	0.47

\* Data below 5000 are subject to strong variations, due to sampling error



## Results by Autonomous Communities

(Conclusion)

	Current quarter	Variation on previous quarter		Variation on same quarter, previous year	
		Difference	Percentage	Difference	Percentage
<b>3. Employed</b>					
TOTAL	20,346.3	-78.8	-0.39	-164.3	-0.80
Andalucía	3,140.0	-40.4	-1.27	-88.4	-2.74
Aragón	618.2	3.2	0.51	-2.7	-0.43
Asturias (Principado de)	463.3	8.0	1.75	21.3	4.83
Balears (Illes)	534.3	8.9	1.69	-2.8	-0.52
Canarias	862.5	-9.6	-1.10	-48.5	-5.32
Cantabria	264.1	4.1	1.59	2.8	1.08
Castilla y León	1,078.4	13.7	1.28	-10.2	-0.93
Castilla-La Mancha	848.6	-6.3	-0.74	-9.9	-1.15
Cataluña	3,495.3	-54.4	-1.53	-30.1	-0.85
Comunitat Valenciana	2,212.6	-25.0	-1.12	-18.1	-0.81
Extremadura	416.2	-0.4	-0.10	-1.6	-0.39
Galicia	1,214.5	13.7	1.14	-0.6	-0.05
Madrid (Comunidad de)	3,086.8	26.1	0.85	15.1	0.49
Murcia (Región de)	619.6	-18.0	-2.82	-12.9	-2.04
Navarra (Comunidad Foral de)	290.3	-1.7	-0.60	0.5	0.17
País Vasco	1,006.8	1.4	0.14	17.8	1.80
Rioja (La)	147.0	-1.0	-0.69	2.5	1.74
Ceuta	25.9	0.1	0.53	2.9	12.66
Melilla	22.0	-1.0	-4.36	-1.5	-6.28

## 4. Unemployed

TOTAL	2,598.8	217.2	9.12	806.9	45.03
Andalucía	704.6	86.6	14.01	240.4	51.79
Aragón	41.1	-3.6	-8.12	9.3	29.44
Asturias (Principado de)	37.7	-1.0	-2.60	3.5	10.17
Balears (Illes)	55.3	7.2	14.93	30.3	120.99
Canarias	183.0	16.9	10.19	73.4	66.99
Cantabria	17.9	-1.8	-9.05	2.5	16.12
Castilla y León	111.2	2.2	2.04	29.0	35.19
Castilla-La Mancha	108.5	8.4	8.44	44.0	68.34
Cataluña	343.7	50.7	17.32	88.0	34.41
Comunitat Valenciana	312.8	19.6	6.67	99.4	46.56
Extremadura	71.2	4.1	6.18	12.2	20.67
Galicia	112.4	3.3	3.04	24.9	28.47
Madrid (Comunidad de)	282.7	-11.8	-4.01	86.5	44.09
Murcia (Región de)	101.6	20.1	24.69	44.8	78.85
Navarra (Comunidad Foral de)	22.1	4.8	27.32	8.9	66.83
País Vasco	67.3	8.0	13.54	3.7	5.78
Rioja (La)	13.3	2.5	23.27	5.3	65.10
Ceuta	5.4	-0.5	-9.00	-0.7	-10.75
Melilla	6.9	1.5	26.84	1.6	30.58

\* Data below 5,000 are subject to strong variations, due to sampling error

## Results by Autonomous Communities

(Absolute figures in thousands and rates in percentage)

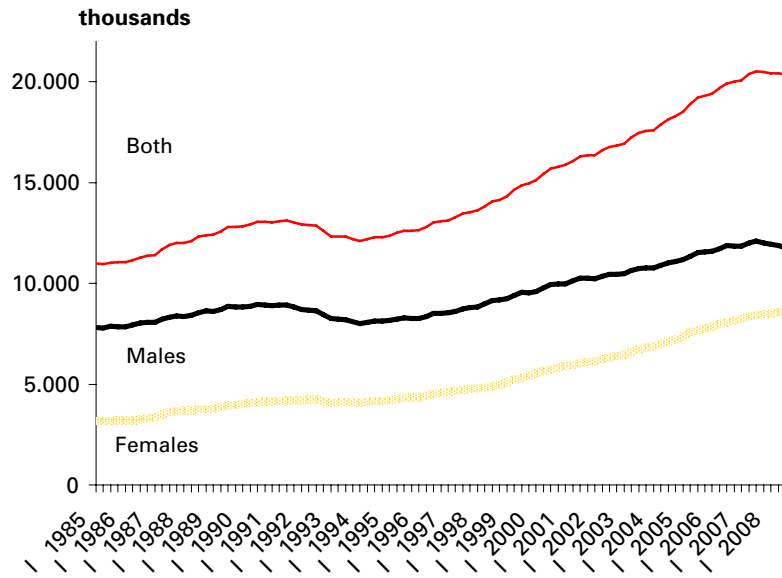
	Both sexes				Males				Females			
	Employed	Unemployed	Activity rate	Unem. rate	Employed	Unemployed	Activity rate	Unem. Rate	Employed	Unemployed	Activity rate	Unem. Rate
TOTAL	20,346.3	2,598.8	59.95	11.33	11,758.9	1,353.6	69.81	10.32	8,587.4	1,245.2	50.46	12.66
Andalucía	3,140.0	704.6	57.62	18.33	1,911.9	350.9	68.91	15.51	1,228.1	353.7	46.68	22.36
Aragón	618.2	41.1	59.26	6.23	355.1	20.4	67.87	5.44	263.2	20.6	50.74	7.27
Asturias	463.3	37.7	53.53	7.53	259.9	15.4	61.97	5.58	203.4	22.4	45.90	9.91
Balears (Illes)	534.3	55.3	67.03	9.38	299.9	32.3	75.64	9.73	234.3	22.9	58.45	8.92
Canarias	862.5	183.0	60.91	17.50	499.1	102.1	70.37	16.99	363.4	80.8	51.54	18.20
Cantabria	264.1	17.9	57.13	6.34	152.1	8.9	67.11	5.53	112.0	9.0	47.69	7.42
Castilla y Leon	1,078.4	111.2	54.94	9.35	641.0	48.1	64.49	6.98	437.4	63.1	45.64	12.61
Castilla-La Mancha	848.6	108.5	57.13	11.34	528.2	52.0	68.89	8.97	320.4	56.5	45.24	14.98
Cataluña	3,495.3	343.7	63.12	8.95	1,953.4	204.8	72.19	9.49	1,541.8	138.9	54.35	8.26
Comunitat Valenciana	2,212.6	312.8	60.76	12.39	1,292.5	171.7	71.10	11.73	920.1	141.1	50.60	13.30
Extremadura	416.2	71.2	54.00	14.60	260.5	30.5	65.31	10.47	155.8	40.7	42.97	20.71
Galicia	1,214.5	112.4	55.56	8.47	677.5	50.9	63.84	6.98	537.0	61.6	47.98	10.29
Madrid (Comunid.de)	3,086.8	282.7	64.70	8.39	1,704.0	152.6	74.11	8.22	1,382.8	130.1	55.97	8.60
Murcia (Región de)	619.6	101.6	61.81	14.09	369.4	58.0	72.48	13.58	250.2	43.6	50.91	14.82
Navarra (C. Foral de)	290.3	22.1	61.49	7.09	168.8	9.1	70.48	5.10	121.5	13.1	52.62	9.72
País Vasco	1,006.8	67.3	58.64	6.27	565.2	33.9	67.45	5.66	441.6	33.4	50.35	7.04
Rioja (La)	147.0	13.3	60.31	8.32	88.3	6.3	70.92	6.68	58.7	7.0	49.61	10.69
Ceuta	25.9	5.4	55.01	17.29	17.2	2.3	69.41	11.99	8.6	3.1	40.82	26.16
Melilla	22.0	6.9	55.31	23.77	15.0	3.3	72.19	17.95	7.1	3.6	39.51	33.74

\* Data below 5,000 are subject to strong variations, due to sampling errors

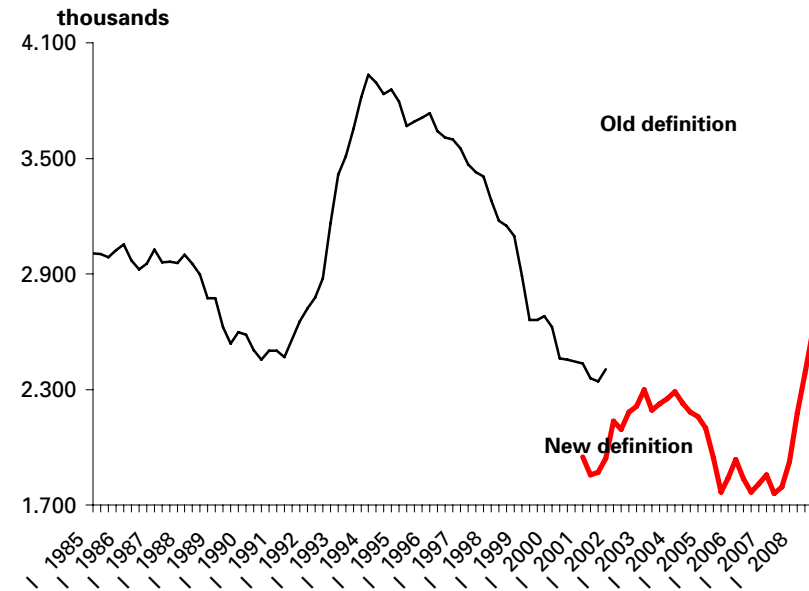
# Employed and unemployed by sex

APS Third Quarter 2008

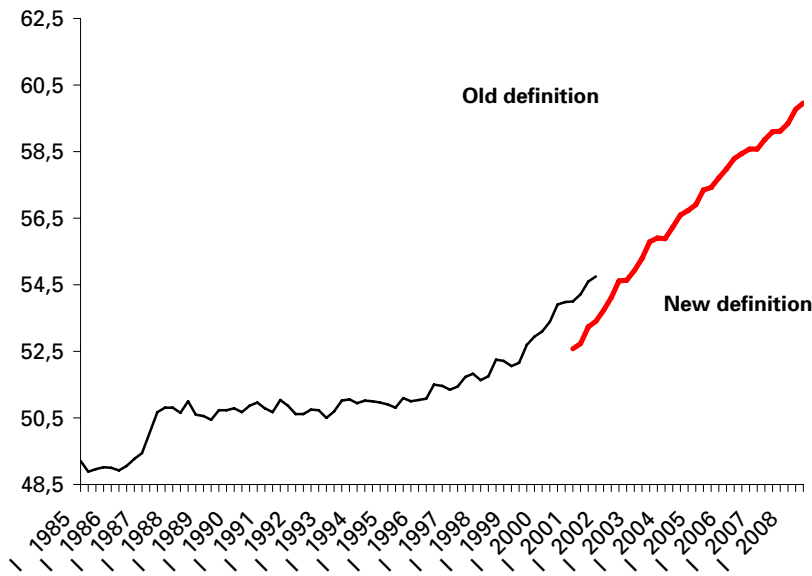
## Employment



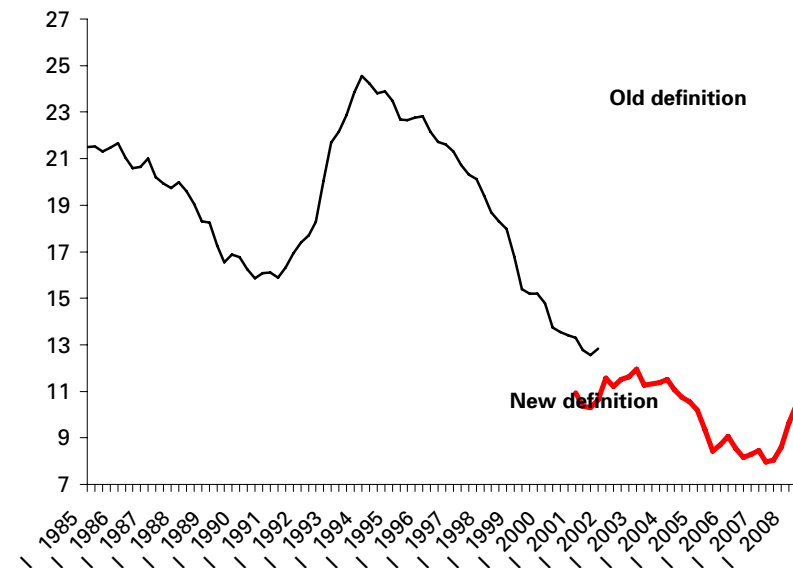
## Unemployment



## Activity rate



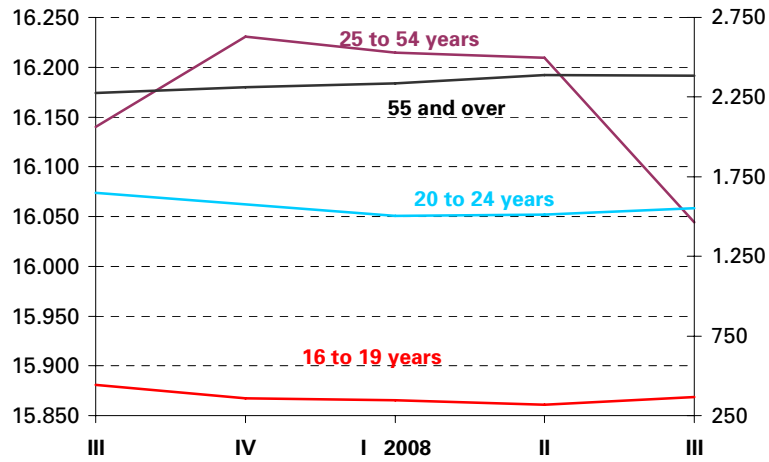
## Unemployment rate



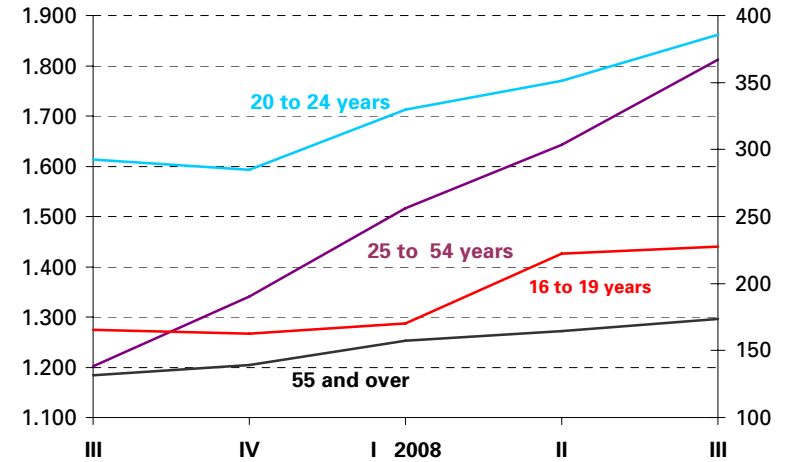
# Employed and Unemployed by age

APS Third Quarter 2008

## Employment

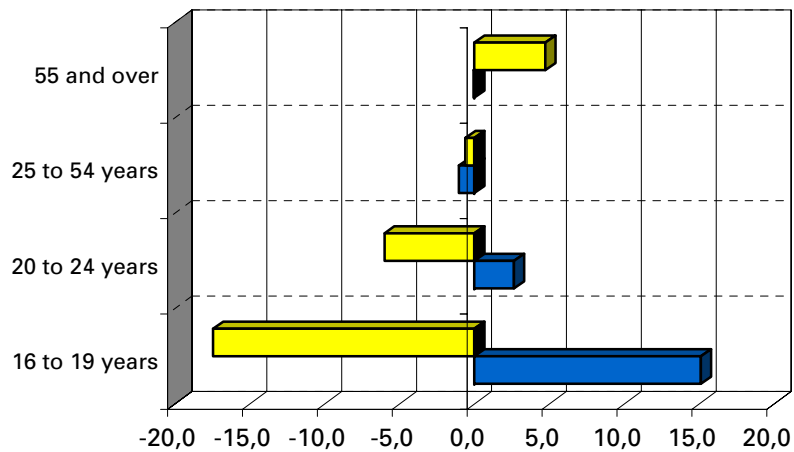


## Unemployment



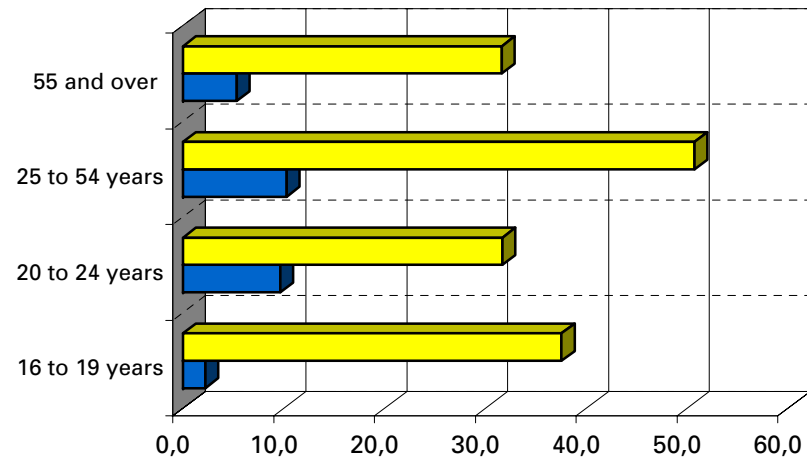
## Variation percentages over the previous quarter and over the same quarter of the previous year

### Employment



■ previous quarter ■ same quarter, previous year

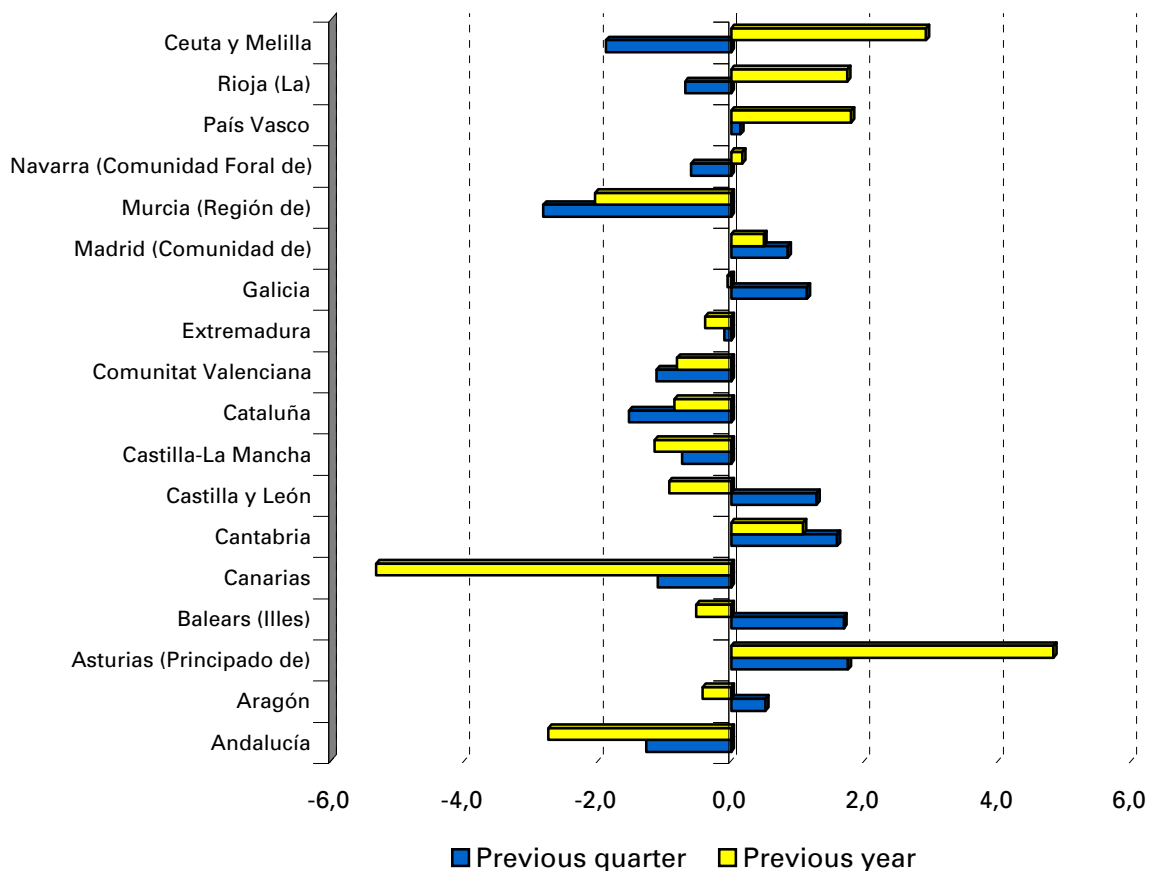
### Unemployment



■ previous quarter ■ same quarter, previous year

# Employment variation percentages over the previous quarter and over the same quarter of the previous year

Third Quarter 2008



## Unemployment rate (Spain = 11,33 )

