

Economically Active Population Survey (EAPS) Third quarter of 2009

Main results

- The number of employed persons decreases by 74,800 persons in the third quarter of 2009, as compared with the previous quarter, standing at 18,870,200. In the last year, employment has decreased by 1,476,200 persons. The interannual employment variation rate stands at -7.26% .
- The activity rate stands at 59.81% , a quarter of a point less than in the second quarter. For men, the rate is 68.44% (45 hundredths lower than that of the previous quarter) and for women, 51.51% (four hundredths lower).
- The number of unemployed persons decreases by 14,100 as compared with the previous quarter, standing at 4,123,300. The unemployment rate remains practically unchanged (one hundredth more), reaching 17.93% . The number of unemployed persons had increased by 1,524,600 during the last 12 months.
- The total number of wage earners decreases by 86,700 persons as compared with the previous quarter, and stands at 15,650,100. The number of wage earners had decreased by 1,096,000 persons in the last year. Wage earners with a permanent contract decrease by 161,200, and temporary wage earners increase by 74,500 this quarter. The temporary employment rate therefore stands at 25.85% , with an increase of 62 hundredths as compared with the previous quarter.
- The number of employed persons increases in Illes Balears (31,000 more employed persons), Canarias (13,000) and Castilla – La Mancha (12,700). The greatest decreases are observed in Comunidad de Madrid (60,500 fewer employed persons), Andalucía (47,000) and Comunitat Valenciana (31,500).
- The greatest decreases in unemployment this quarter are in Illes Balears (17,800 fewer unemployed persons), Castilla y León (14,300) and Castilla – La Mancha (11,300). The greatest increases in unemployment are observed in Comunidad de Madrid (20,300 more unemployed persons than the previous quarter), Comunitat Valenciana (15,500) and País Vasco (10,700).

The number of active persons decreases by 89,000, standing at 22,993,500

The total number of active persons reached 22,993,500 in the third quarter of 2009, with a decrease of 89,000 persons as compared with the previous quarter. The activity rate was 59.81%, that is, a quarter of point less than in the previous quarter.

The number of active women decreased by 3,100 persons this quarter, standing at 10,089,400. The female activity rate decreased four hundredths, reaching 51.51%. On the other hand, the number of active men stood at 12,904,100, with a decrease of 85,800 persons. The male activity rate decreased 45 hundredths this third quarter, standing at 68.44%.

In the last 12 months, the number of active persons increased by 48,400, a figure lower than the increase registered by the population aged 16 years old and over. There was an increase of 256,700 in women, whereas active men decreased by 208,400.

The activity rate of the foreign population (76.60%) decreased 92 hundredths during the quarter, whereas of the Spanish population decreased 15 hundredths to 57.43%. The difference between the two rates is greater than 19 points. To a large extent, the age structure of the foreign nationals explained this difference.

Employment decreases by 74,800 persons this quarter, to 18,870,200

The number of employed persons stood at 18,870,200 persons, 74,800 fewer than in the second quarter of the year. In the last 12 months, the number of employed persons decreased by 1,476,200.

The interannual employment variation rate was -7.26% in the third quarter of 2009, that is, one hundredth less than in the second quarter (-7.25%).

The number of employed women increased by 12,800 this quarter, whereas employment of men decreased by 87,600.

In the last 12 months, the number of employed women decreased by 330,500, and the number of men decreased by 1,145,700.

The number of employed Spaniards decreased by 55,200 in the last three months, whereas the number of employed foreign nationals decreased by 19,600. In the third quarter of 2009, 14.05% of the total number of employed persons were foreign nationals.

The number of employed persons increased in the group aged 16 to 19 years old (22,600 employed more) and in those aged 40 to 54 years old (44,600 more). Conversely, unemployment decreased in the group aged 25 to 39 years old (109,000 fewer this quarter) and 55 and over (32,000 fewer).

Distinguishing by sex, of note was the increase in employment among females between the ages of 40 and 44 years old and between the ages of 50 and 54 years old (23,300 and 23,600 more employed women, respectively). The greatest decreases this quarter were among males between the ages of 25 and 29 years old (40,000 fewer employed men than the previous quarter) and among females of the same aged group (29,000 fewer).

Regarding quarter-on-quarter evolution by sector¹ of activity, the number of those employed in Agriculture decreased by 49,500, standing at 737,200. Those employed in Industry decreased by 79,800 persons, to a total of 2,719,600. In the Construction sector, there was a decrease of 71,700 in the number of employed persons in the third quarter, with total employment for the sector standing at 1,850,300 persons. Lastly, the number of those employed in Services stood at 13,563,100, with an increase of 126,200 employed persons as compared with the previous quarter.

The interannual variation rate for employment decreased 562,800 in Construction (-23.32%), 475,600 in Industry (-14.89%), 50,200 in Agriculture (-6.37%) and 387,600 in Services (-2.78%).

The number of wage earners with a temporary contract increases by 74,500, and that of wage earners with a permanent contract decreases by 161,200

The total number of wage earners in the third quarter of 2009 was 15,650,100, with a decrease of 86,700 persons as compared with the previous quarter. The number of wage earners with a permanent contract decreased by 161,200, standing at 11,604,100 persons. Wage earners with a temporary contract increased by 74,500 persons, to a total of 4,046,000.

The temporary employment rate stood at 25.85%, that is, 62 hundredths over the rate from the previous quarter.

In the last 12 months, the total number of wage earners decreased by 1,096,000 persons. Wage earners with a permanent contract decreased by 197,300 persons, and those with a temporary contract decreased by 898,800.

The salary rate decreased 13 hundredths, standing at 82.94%.

Regarding the **working day**, in this quarter, 2,316,100 part-time employed persons were registered, 134,400 fewer than in the previous quarter. Of these, 1,816,000 were women (122,300 less than three months ago), and 500,100 were men (12,200 less).

Those employed full-time increased by 59,600 as compared with the previous quarter. The number of men employed full-time decreased by 75,400, whereas the number of women increased by 135,100.

The percentage of part-time employed persons was 12.27%, that is, 66 hundredths less than the previous quarter.

Unemployment decreases by 14,100 persons, reaching a total of 4,123,300.

Unemployment decreased by 14,100 persons this quarter. The total number of unemployed persons was 4,123,300, with an increase of 1,524,600 persons during the last 12 months.

The unemployment rate increased one hundredth in the third quarter of the year, standing at 17.93% of the active population.

¹ By CNAE-2009 classification

The decrease in unemployment mostly affected females (15,900 fewer unemployed women, reaching a total of 1,832,500), whereas among males the number of unemployed persons remained practically the same as in the second quarter (2,290,900 unemployed persons).

The unemployment rate for men was 17.75%, that is, 13 hundredths more than in the second quarter. Conversely, the rate for women decreased 15 hundredths, standing at 18.16%. In the last three quarters, there has been a gradual approximation between the two rates.

Unemployment grew by 18,000 persons among Spaniards, and decreased by 32,200 persons among foreign nationals. The unemployment rate for Spaniards was 16,12% (12 hundredths higher than the previous quarter), while the rate for foreign nationals was 27,51% (four tenths lower).

Unemployment decreased among persons aged 25 years old or over (44,700 fewer unemployed persons) and among young persons between the ages of 16 and 19 years old (3,600).

Considering age structure and sex, the greatest decrease in the number of unemployed persons was among females between the ages of 25 and 54 years old (45,200 fewer than in the previous quarter), whereas the greatest increase is to be found among females between the ages of 20 and 24 years of age (27,700 more unemployed women).

Regarding quarter-on-quarter evolution by sector², unemployment decreased this quarter in Construction (79,800 fewer unemployed persons), in Services (60,800) and in Industry (34,600). Conversely, it increased in Agriculture (20,600 more unemployed persons).

The number of unemployed persons who lost their jobs over one year ago increased by (by 112,700) and decreased among those seeking their first job (by 27,800).

By interannual comparison, unemployment increased in all sectors. Thus, there were increases of 465,900 unemployed persons in Services, 182,300 in Construction, 151,600 in Industry and 70,000 in Agriculture.

Interannually, unemployment also increased in those seeking their first job (by 57,100) and in those who lost their job over a year ago (by 597,700).

The unemployment rate for the household reference person fell 23 hundredths, and stood at 14.67%. The rate for the spouse or partner decreased 18 hundredths to 14.74%, and the rate for sons or daughters increased 0.92 points to 29.14%.

The number of households with all active members unemployed was 1,136,500.

In the third quarter of 2009, the number of households with all active members working increased by 17,900 to stand at 9,537,400. Over the last 12 months, the number households in this category decreased in 946,400.

The number of households in which all active members were unemployed increased by 18,200 as compared with the previous quarter, and by 498,400 in the last 12 months. The total number of households in this situation was 1,136,500.

² According to the CNAE-2009 classification of activities

Mobility as related to activity

Regarding quarter-on-quarter mobility as related to activity, the proportion of unemployed persons who had been employed three months prior was 20.66%, practically the same as the second quarter of the year.

The percentage of employed persons who had also been employed three months ago was 92.50%, that is, half point lower than that recorded the previous quarter.

The percentage of employed persons the current quarter, and who had been unemployed in the second quarter of 2009, was 4.66%, or 13 hundredths more than three months ago. The percentage of employed persons who had been inactive before was 2.84%, which was 39 hundredths more than in the second quarter.

The percentage of inactive persons who had been employed during the previous quarter increased 85 hundredths to 4.40%.

59.39% of the unemployed persons this quarter had also been unemployed the previous quarter, indicating a 91 hundredths decrease.

91.19% of inactive persons had also been inactive three months prior. This percentage was 1.32 points lower than that from the previous quarter.

Results by Autonomous Community

The greatest increases in the number of **active persons** this quarter were observed in Canarias (21,300), Cataluña (14,900) and Illes Balears (13,100),

The sharpest decreases in the number of active persons were recorded in Andalucía (51,300), Comunitat Valenciana (16,000) and Region de Murcia (10,900).

Regarding **employment**, the largest increases in the number of employers in the third quarter of 2009 were observed in Illes Balears (31,000 more employed persons), Canarias (13,000) and Castilla - La Mancha (12,700). The largest decreases in the number of employed persons were observed in Comunidad de Madrid (60,500 fewer employed persons), Andalucía (47,000), Comunitat Valenciana (31,500), Región de Murcia (14,500) and País Vasco (11,900).

In the last 12 months, no Autonomous Community presented an increase in the number of employed persons. The greatest decreases were in Cataluña (296,000 fewer employed persons), Andalucía (255,700), Comunitat Valenciana (207,100) and Comunidad de Madrid (205,100).

Regarding **unemployment**, the greatest decreases this quarter were registered in Illes Balears (17,800), Castilla y León (14,300), and Castilla-La Mancha (11,300). In turn, the greatest increases in the number of unemployed persons this third quarter were in Comunidad de Madrid (20,300 more unemployed persons), Comunitat Valenciana (15,500) and País Vasco (10,700).

In terms of interannual variation, all of the Autonomous Communities experienced increases in the number of unemployed persons. The greatest increases corresponded to Andalucía (289,800 more unemployed persons in the last 12 months), Cataluña (263,500), Comunitat Valenciana (251,500) and Comunidad de Madrid (200,900).

Comunidad Foral de Navarra (10.39%), Cantabria (11.20%) and País Vasco (11.55%) were the Autonomous Communities with the lowest **unemployment rates** in the third quarter of

2009. The highest rates were recorded in Canarias (25.99%), Andalucía (25.64%) and Comunitat Valenciana (21.96%), Región de Murcia (20.97%).

The lowest female unemployment rates were observed in Illes Balears (11.27%), Comunidad Foral de Navarra (11.37%) and País Vasco (11.74%).

In Illes Balears, Región de Murcia, Comunitat Valenciana, Cataluña and Comunidad de Madrid, the female unemployment rate was lower than the male rate this quarter.

Among the Autonomous Communities in which the female rate was higher than the male rate, worth noting were Extremadura (almost 10 points higher), Castilla y León (5.63), Castilla-La Mancha (4.17 points higher).

The Autonomous Communities with the highest **activity rates** in the third quarter of 2009 were Illes Balears (68.05%), Comunidad de Madrid (64.31%) Cataluña (62.72%), and Canarias (62.33%).

The lowest activity rates this quarter were recorded in Principado de Asturias (51.97%), Extremadura (53.84%) and Castilla y León (54.52%).

Results by province

As of third quarter³ of 2008, the provincial results that were previously published in this Press Release henceforth appear on the INE website, together with the results tables customarily published.

This EAPS information (Summary of provincial results) may be accessed via the following link:

<http://www.ine.es/daco/daco42/daco4211/epapro0309.pdf>

All of the provincial information from this survey may be accessed via the following links:

- In the INEbase database

<http://www.ine.es/jaxiBD/menu.do?L=1&divi=EPA&his=0&type=db>

- In the TEMPUS database

<http://www.ine.es/GSTConsul/arboliAction.do?divi=EPA&language=1>

For further information see **INEbase-www.ine.es** All press releases at: www.ine.es/prensa/prensa_en.htm

Press office: Telephone numbers: 91 583 93 63 / 94 08 – Fax: 91 583 90 87 - gprensa@ine.es

Information Area: Telephone number: 91 583 91 00 – Fax: 91 583 91 58 – www.ine.es/infoine

³ By virtue of the *Multilateral Labour Agreement between the National Statistics Institute (INE) and the central statistics bodies of the Autonomous Communities towards the development of cooperation in statistics issues*

Methodological note

General characteristics

The Economically Active Population Survey (EAPS) is a continuous sample-based study aimed at family dwellings, and which has been conducted since 1964.

The additional sample collected by the *Galician Statistics Institute* (IGE) has been incorporated as of the third quarter of 2009, using the same fieldwork system and identical methodology to that of the INE. Therefore, apart from the 3,588 census sections that have made up the sample for the whole of Spain since 2005, we must take into account the 234 additional sections in the Autonomous Community of Galicia. Since the third quarter of 2009, the EAPS sample is made up of a total of 3,822 census sections from the more than 30,000 census sections Spain is divided into. An average of 18 households are surveyed in each one, except in the provinces of Barcelona, Madrid, Sevilla, Valencia and Zaragoza, where the number of households surveyed is 22. Thus, the sample size is approximately 65,000 dwellings, providing information on some 180,000 persons. The data is collected via personal and telephone interviews. The information is carefully filtered and computer-processed. Results are obtained within the month following the end of the reference quarter for the data.

Main definitions

Active population: persons aged 16 and over who, during the reference week (the week prior to that when the interview is held), supplied labour for the production of economic goods and services or were available to do so and carried out actions to incorporate themselves into said production. They are divided into employed and unemployed persons.

Employed persons: persons aged 16 and over who, during the reference week, worked for at least one hour in exchange for payment (salary, wage, business benefit, etcetera) in cash or in kind. Persons who, being employed, had been temporarily absent from their job due to illness, vacation, etc., are also employed persons.

Employed persons are classified, considering their professional status, as non-wage earners (employers, businesspersons without employees and independent workers, cooperative members, family assistance) and wage earners (public or private).

Considering the length of the working day, employed persons are classified as full-time and part-time employed persons. The usual working week may not be shorter than 30 hours in the first case, nor exceed 35 hours in the second.

Wage earners are classified as permanent and temporary. For the latter, the end of their contract or work relationship is set by means of objective conditions, such as the expiry of a certain period of time, the completion of a specific task, etc.

A significant category within employment is that of **time-related underemployment**, defined in the 16th International Labour Statisticians Conference (Geneva, 1998). The EAPS considers persons suffering time-related underemployment as employed persons who would like to work more hours, who are available to work more hours and whose effective working hours in the reference week are less than the number of hours usually worked by employed persons working full-time in the same branch of activity as that in which the underemployed person develops his/her main job.

Unemployed persons: persons aged 16 and over who, during the reference week, were jobless, available for work, and actively looking for a job. Persons who might have already found a job and are waiting to start are also considered as unemployed, provided that they meet the first two conditions.

According to European Commission Regulation 1897/2000, the following are considered as active search methods in the four weeks prior to the interview:

- Being in contact with a public employment office for the purpose of finding work, whatever part they play in the initiative (the renewal of registration due to purely administrative reasons does not constitute active planning).
- Being in contact with a private office (temporary employment office, specialised hiring agency...) with the objective of finding work.
- Having sent an application directly to employers.
- Having searched via personal relations and trade unions...
- Having advertised oneself or responded to newspaper advertisements.
- Having studied employment offers.
- Having taken part in a test, public exam or interview in the framework of a contracting procedure.
- Having looked for land, premises or material.
- Having taken steps to obtain permits, licences or financial resources.

Inactive population: persons aged 16 and over not included in any of the above categories.

Economically Active Population Survey Third Quarter 2009

National results

(Continues)

	Current quarter	Variation on previous quarter		Variation on same quarter, previous year	
		Difference	Percentage	Difference	Percentage
1. Population aged 16 years and over by sex and labour status					
BOTH SEXES					
Population aged 16 years and over	38.442,5	10,4	0,03	171,8	0,45
Active population	22.993,5	-89,0	-0,39	48,4	0,21
- Employed	18.870,2	-74,8	-0,39	-1.476,2	-7,26
- Unemployed	4.123,3	-14,1	-0,34	1.524,6	58,67
Inactive	15.449,0	99,4	0,65	123,4	0,81
Activity rate	59,81	-0,25	-	-0,14	-
Unemployment rate	17,93	0,01	-	6,61	-
Population aged 16 to 64 years	30.903,6	-17,6	-0,06	61,7	0,20
Activity rate (16-64)	73,91	-0,25	-	0,04	-
Unemployment rate (16-64)	18,04	0,01	-	6,65	-
Employment rate (16-64)	60,58	-0,21	-	-4,88	-
MALES					
Population aged 16 years and over	18.855,3	-0,3	0,00	71,8	0,38
Active population	12.904,1	-85,8	-0,66	-208,4	-1,59
- Employed	10.613,3	-87,6	-0,82	-1.145,7	-9,74
- Unemployed	2.290,9	1,8	0,08	937,3	69,25
Inactive	5.951,2	85,6	1,46	280,2	4,94
Activity rate	68,44	-0,45	-	-1,37	-
Unemployment rate	17,75	0,13	-	7,43	-
Population aged 16 to 64 years	15.627,2	-13,2	-0,08	20,6	0,13
Activity rate (16-64)	81,98	-0,51	-	-1,41	-
Unemployment rate (16-64)	17,87	0,14	-	7,47	-
Employment rate (16-64)	67,33	-0,53	-	-7,39	-
FEMALES					
Population aged 16 years and over	19.587,2	10,7	0,05	100,0	0,51
Active population	10.089,4	-3,1	-0,03	256,7	2,61
- Employed	8.256,9	12,8	0,16	-330,5	-3,85
- Unemployed	1.832,5	-15,9	-0,86	587,3	47,16
Inactive	9.497,8	13,8	0,15	-156,8	-1,62
Activity rate	51,51	-0,04	-	1,05	-
Unemployment rate	18,16	-0,15	-	5,50	-
Population aged 16 to 64 years	15.276,4	-4,3	-0,03	41,1	0,27
Activity rate (16-64)	65,67	0,02	-	1,54	-
Unemployment rate (16-64)	18,25	-0,16	-	5,54	-
Employment rate (16-64)	53,68	0,12	-	-2,29	-

2. Spanish population¹ aged 16 years and over by labour status

SPANISH POPULATION AGED 16 YEARS AND OVER	33.665,7	20,8	0,06	71,8	0,21
Active population	19.334,7	-37,2	-0,19	-39,4	-0,20
- Employed	16.218,0	-55,2	-0,34	-1.180,5	-6,78
- Unemployed	3.116,7	18,0	0,58	1.141,0	57,75
Inactive	14.331,0	57,9	0,41	111,3	0,78
Activity rate	57,43	-0,15	-	-0,24	-
Unemployment rate	16,12	0,12	-	5,92	-

¹ including dual nationality

October 23rd 2009

National results

(Continuation)

	Current quarter	Variation on previous quarter		Variation on same quarter, previous year	
		Difference	Percentage	Difference	Percentage
3. Foreign population aged 16 years and over by labour status					
FOREIGN POPULATION AGED 16 YEARS AND OVER	4.776,8	-10,3	-0,22	100,0	2,14
Active population	3.658,8	-51,8	-1,40	87,8	2,46
- Employed	2.652,2	-19,6	-0,73	-295,7	-10,03
- Unemployed	1.006,7	-32,2	-3,10	383,6	61,56
Inactive	1.118,0	41,4	3,85	12,1	1,10
Activity rate	76,60	-0,92	-	0,24	-
Unemployment rate	27,51	-0,48	-	10,06	-

4. Employed by sex, age group and economic sector

BOTH SEXES	18.870,2	-74,8	-0,39	-1.476,2	-7,26
16 to 19 years	226,5	22,6	11,07	-140,2	-38,23
20 to 24 years	1.181,7	-0,9	-0,08	-368,8	-23,79
25 to 29 years	2.295,5	-69,0	-2,92	-362,1	-13,63
30 to 34 years	2.937,2	-19,0	-0,64	-253,7	-7,95
35 to 39 years	2.845,9	-21,0	-0,73	-140,9	-4,72
40 to 44 years	2.683,0	21,9	0,82	-80,9	-2,93
45 to 49 years	2.426,7	7,1	0,29	-58,7	-2,36
50 to 54 years	1.957,2	15,6	0,80	-2,7	-0,14
55 and over	2.316,6	-32,0	-1,36	-68,2	-2,86
MALES	10.613,3	-87,6	-0,82	-1.145,7	-9,74
16 to 19 years	133,4	11,1	9,05	-88,0	-39,76
20 to 24 years	624,2	2,0	0,32	-223,4	-26,36
25 to 29 years	1.196,9	-40,0	-3,23	-228,0	-16,00
30 to 34 years	1.619,2	-19,3	-1,18	-190,3	-10,52
35 to 39 years	1.589,6	-16,9	-1,05	-134,9	-7,82
40 to 44 years	1.498,4	-1,3	-0,09	-92,6	-5,82
45 to 49 years	1.372,2	10,3	0,75	-46,7	-3,29
50 to 54 years	1.141,6	-8,0	-0,70	-33,4	-2,84
55 and over	1.437,7	-25,3	-1,73	-108,3	-7,00
FEMALES	8.256,9	12,8	0,16	-330,5	-3,85
16 to 19 years	93,1	11,5	14,11	-52,1	-35,90
20 to 24 years	557,5	-2,9	-0,51	-145,4	-20,69
25 to 29 years	1.098,6	-29,0	-2,57	-134,2	-10,89
30 to 34 years	1.317,9	0,3	0,02	-63,4	-4,59
35 to 39 years	1.256,2	-4,1	-0,32	-5,9	-0,47
40 to 44 years	1.184,6	23,3	2,00	11,7	1,00
45 to 49 years	1.054,5	-3,1	-0,30	-12,0	-1,13
50 to 54 years	815,7	23,6	2,98	30,7	3,91
55 and over	878,9	-6,7	-0,76	40,1	4,78
TOTAL EMPLOYED	18.870,2	-74,8	-0,39	-1.476,2	-7,26
Agriculture	737,2	-49,5	-6,29	-50,2	-6,37
Industry	2.719,6	-79,8	-2,85	-475,6	-14,89
Construction	1.850,3	-71,7	-3,73	-562,8	-23,32
Services	13.563,1	126,2	0,94	-387,6	-2,78

National results

(Continuation)

	Current quarter	Variation on previous quarter		Variation on same quarter, previous year	
		Difference	Percentage	Difference	Percentage

5. Employed by professional status, type of contract and working hours

TOTAL EMPLOYED	18.870,2	-74,8	-0,39	-1.476,2	-7,26
Self-employed workers	3.209,5	13,6	0,42	-375,3	-10,47
- Employers	1.061,7	-18,4	-1,70	-119,8	-10,14
- Independent workers	1.933,8	15,0	0,78	-185,2	-8,74
- Cooperatives members	34,1	4,0	13,28	-30,2	-46,97
- Family workers	180,0	12,9	7,74	-40,2	-18,24
Employees	15.650,1	-86,7	-0,55	-1.096,0	-6,54
- With a permanent job	11.604,1	-161,2	-1,37	-197,3	-1,67
- With a temporary job	4.046,0	74,5	1,88	-898,8	-18,18
Others	10,5	-1,7	-13,85	-4,9	-31,62
FULL-TIME EMPLOYED	16.554,0	59,6	0,36	-1.468,4	-8,15
Males	10.113,1	-75,4	-0,74	-1.164,6	-10,33
Females	6.440,9	135,1	2,14	-303,9	-4,50
PART-TIME EMPLOYED	2.316,1	-134,4	-5,49	-7,8	-0,33
Males	500,1	-12,2	-2,38	18,9	3,93
Females	1.816,0	-122,3	-6,31	-26,7	-1,45

6. Unemployed by sex, age group, and economic sector

BOTH SEXES	4.123,3	-14,1	-0,34	1.524,6	58,67
16 to 19 years	259,2	-3,6	-1,35	31,7	13,93
20 to 24 years	626,5	34,1	5,76	241,0	62,54
25 to 54 years	2.934,4	-38,8	-1,30	1.122,1	61,91
55 and over	303,2	-5,9	-1,92	129,8	74,82
MALES	2.290,9	1,8	0,08	937,3	69,25
16 to 19 years	151,7	-9,1	-5,66	31,3	25,95
20 to 24 years	340,5	6,4	1,91	130,1	61,80
25 to 54 years	1.623,5	6,4	0,40	700,5	75,89
55 and over	175,2	-1,9	-1,09	75,5	75,78
FEMALES	1.832,5	-15,9	-0,86	587,3	47,16
16 to 19 years	107,6	5,5	5,42	0,4	0,41
20 to 24 years	286,0	27,7	10,73	111,0	63,42
25 to 54 years	1.310,9	-45,2	-3,33	421,6	47,41
55 and over	128,0	-4,0	-3,03	54,2	73,53
TOTAL UNEMPLOYED	4.123,3	-14,1	-0,34	1.524,6	58,67
Agriculture	215,1	20,6	10,58	70,0	48,22
Industry	359,8	-34,6	-8,78	151,6	72,80
Construction	622,1	-79,8	-11,37	182,3	41,47
Services	1.404,7	-60,8	-4,15	465,9	49,62
Lost their job more than 1 year ago	1.207,2	112,7	10,29	597,7	98,06
First job seekers	314,4	27,8	9,71	57,1	22,19

National results

(Conclusion)

	Current quarter	Variation on previous quarter		Variation on same quarter, previous year	
		Difference	Percentage	Difference	Percentage

7. Unemployment rate by relationship with the reference person

TOTAL	17,93	0,01	-	6,61	-
Reference person	14,67	-0,23	-	5,95	-
Spouse or partner	14,74	-0,18	-	5,02	-
Child	29,14	0,92	-	11,23	-
Other relatives	22,90	-2,39	-	6,17	-
Unrelated persons	18,64	2,31	-	5,94	-

8. Household data

TOTAL HOUSEHOLDS	17.115,9	64,1	0,38	311,0	1,85
Households with at least one active member	12.866,7	-22,6	-0,18	163,3	1,29
- All member employed	9.537,4	17,9	0,19	-946,4	-9,03
- All member unemployed	1.136,5	18,2	1,63	498,4	78,11
Households without any active population	4.249,2	86,6	2,08	147,7	3,60

Mobility according to activity in current and previous quarter

Classification in previous quarter	Classification in current quarter			
	Total	Employed	Unemployed	Inactive
BOTH SEXES				
Total	100,00	100,00	100,00	100,00
Employed	49,51	92,50	20,66	4,40
Unemployed	10,18	4,66	59,39	4,41
Inactive	40,32	2,84	19,95	91,19
MALES				
Total	100,00	100,00	100,00	100,00
Employed	57,20	93,48	22,21	4,98
Unemployed	11,27	4,60	63,40	4,42
Inactive	31,53	1,92	14,38	90,59
FEMALES				
Total	100,00	100,00	100,00	100,00
Employed	42,13	91,23	18,79	4,04
Unemployed	9,13	4,73	54,58	4,40
Inactive	48,74	4,03	26,63	91,56

Grossing up factors of current quarter (forward analysis)

Results by Autonomous Communities

(Continues)

	Current quarter	Variation on previous quarter		Variation on same quarter, previous year	
		Difference	Percentage	Difference	Percentage
1. Population aged 16 years and over					
TOTAL	38.442,5	10,4	0,03	171,8	0,45
Andalucía	6.721,0	8,9	0,13	48,6	0,73
Aragón	1.119,3	0,8	0,07	6,7	0,60
Asturias (Principado de)	933,0	-0,6	-0,07	-3,1	-0,33
Balears (Illes)	892,0	2,6	0,29	12,6	1,43
Canarias	1.736,8	3,7	0,21	20,4	1,19
Cantabria	495,8	0,3	0,07	2,1	0,43
Castilla y León	2.164,2	-1,8	-0,08	-1,1	-0,05
Castilla-La Mancha	1.701,2	4,6	0,27	26,0	1,55
Cataluña	6.068,9	-8,3	-0,14	-13,4	-0,22
Comunitat Valenciana	4.195,4	2,3	0,06	38,8	0,93
Extremadura	904,3	0,1	0,01	1,7	0,18
Galicia	2.385,3	-0,9	-0,04	-3,1	-0,13
Madrid (Comunidad de)	5.233,3	-2,2	-0,04	25,0	0,48
Murcia (Región de)	1.179,3	1,7	0,14	12,5	1,07
Navarra (Comunidad Foral de)	511,7	0,5	0,10	3,7	0,73
País Vasco	1.823,8	-1,8	-0,10	-8,0	-0,44
Rioja (La)	266,9	0,1	0,04	1,1	0,41
Ceuta	57,1	0,2	0,36	0,3	0,56
Melilla	53,2	0,3	0,54	1,0	1,85

2. Active population

TOTAL	22.993,5	-89,0	-0,39	48,4	0,21
Andalucía	3.878,7	-51,3	-1,31	34,1	0,89
Aragón	660,4	2,2	0,34	1,1	0,17
Asturias (Principado de)	484,9	-2,3	-0,48	-16,2	-3,23
Balears (Illes)	607,1	13,1	2,21	17,5	2,97
Canarias	1.082,5	21,3	2,01	37,0	3,54
Cantabria	282,3	0,4	0,13	0,3	0,11
Castilla y León	1.179,9	-6,7	-0,56	-9,7	-0,82
Castilla-La Mancha	981,5	1,4	0,14	24,4	2,55
Cataluña	3.806,5	14,9	0,39	-32,5	-0,85
Comunitat Valenciana	2.569,7	-16,0	-0,62	44,3	1,75
Extremadura	486,8	-1,0	-0,20	-0,6	-0,12
Galicia	1.313,3	-4,5	-0,34	-13,6	-1,03
Madrid (Comunidad de)	3.365,4	-40,1	-1,18	-4,2	-0,12
Murcia (Región de)	722,1	-10,9	-1,48	0,9	0,12
Navarra (Comunidad Foral de)	308,4	-5,1	-1,62	-4,0	-1,28
País Vasco	1.045,2	-1,2	-0,11	-29,0	-2,70
Rioja (La)	159,0	-2,0	-1,22	-1,3	-0,83
Ceuta	32,3	-0,1	-0,31	1,0	3,34
Melilla	27,7	-1,3	-4,44	-1,2	-4,06

* Data below 5000 are subject to strong variations, due to sampling error

Results by Autonomous Communities

(Conclusion)

	Current quarter	Variation on previous quarter		Variation on same quarter, previous year	
		Difference	Percentage	Difference	Percentage
3. Employed					
TOTAL	18.870,2	-74,8	-0,39	-1.476,2	-7,26
Andalucía	2.884,3	-47,0	-1,60	-255,7	-8,14
Aragón	581,1	8,5	1,48	-37,2	-6,01
Asturias (Principado de)	419,8	1,0	0,23	-43,5	-9,40
Balears (Illes)	517,1	31,0	6,37	-17,2	-3,22
Canarias	801,1	13,0	1,65	-61,4	-7,11
Cantabria	250,7	1,8	0,70	-13,4	-5,08
Castilla y León	1.026,4	7,7	0,75	-52,0	-4,82
Castilla-La Mancha	801,5	12,7	1,61	-47,1	-5,55
Cataluña	3.199,2	9,6	0,30	-296,0	-8,47
Comunitat Valenciana	2.005,5	-31,5	-1,55	-207,1	-9,36
Extremadura	393,9	4,1	1,05	-22,3	-5,37
Galicia	1.151,1	3,7	0,33	-63,4	-5,22
Madrid (Comunidad de)	2.881,7	-60,5	-2,05	-205,1	-6,65
Murcia (Región de)	570,7	-14,5	-2,48	-48,9	-7,90
Navarra (Comunidad Foral de)	276,4	1,2	0,44	-13,9	-4,79
País Vasco	924,4	-11,9	-1,27	-82,4	-8,19
Rioja (La)	138,1	-2,3	-1,64	-8,8	-6,02
Ceuta	26,0	-1,3	-4,66	0,2	0,63
Melilla	21,2	-0,2	-0,78	-0,8	-3,58

4. Unemployed

TOTAL	4.123,3	-14,1	-0,34	1.524,6	58,67
Andalucía	994,4	-4,3	-0,43	289,8	41,13
Aragón	79,4	-6,2	-7,29	38,3	93,22
Asturias (Principado de)	65,1	-3,3	-4,84	27,3	72,45
Balears (Illes)	90,0	-17,8	-16,54	34,7	62,82
Canarias	281,4	8,3	3,04	98,4	53,77
Cantabria	31,6	-1,4	-4,21	13,7	76,76
Castilla y León	153,5	-14,3	-8,55	42,3	37,99
Castilla-La Mancha	180,0	-11,3	-5,93	71,5	65,89
Cataluña	607,2	5,3	0,88	263,5	76,68
Comunitat Valenciana	564,2	15,5	2,83	251,4	80,38
Extremadura	92,9	-5,1	-5,16	21,8	30,60
Galicia	162,2	-8,2	-4,81	49,7	44,24
Madrid (Comunidad de)	483,7	20,3	4,39	200,9	71,07
Murcia (Región de)	151,4	3,6	2,44	49,8	49,03
Navarra (Comunidad Foral de)	32,0	-6,3	-16,42	9,9	44,68
País Vasco	120,7	10,7	9,74	53,4	79,33
Rioja (La)	20,9	0,3	1,71	7,5	56,38
Ceuta	6,3	1,2	22,89	0,9	16,29
Melilla	6,5	-1,1	-14,74	-0,4	-5,60

* Data below 5,000 are subject to strong variations, due to sampling error

Results by Autonomous Communities

(Absolute figures in thousands and rates in percentage)

5. Employed and unemployed by sex. Activity and unemployment rates

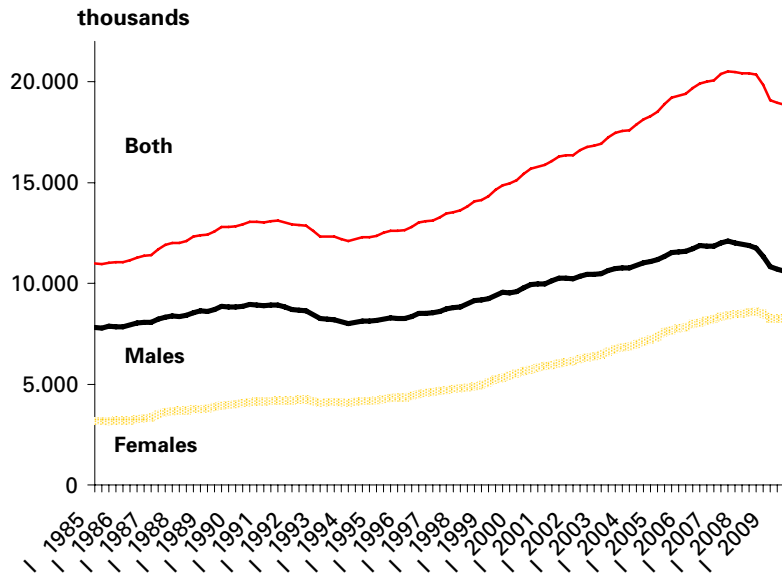
	Both sexes				Males				Females			
	Employed	Unemployed	Activity rate	Unem. rate	Employed	Unemployed	Activity rate	Unem. Rate	Employed	Unemployed	Activity rate	Unem. Rate
TOTAL	18.870,2	4.123,3	59,81	17,93	10.613,3	2.290,9	68,44	17,75	8.256,9	1.832,5	51,51	18,16
Andalucía	2.884,3	994,4	57,71	25,64	1.691,3	552,7	67,90	24,63	1.193,0	441,7	47,85	27,02
Aragón	581,1	79,4	59,00	12,02	328,7	43,8	66,86	11,76	252,4	35,5	51,21	12,35
Asturias	419,8	65,1	51,97	13,42	229,0	33,6	59,31	12,81	190,8	31,4	45,34	14,15
Balears (Illes)	517,1	90,0	68,05	14,82	276,2	59,4	75,23	17,70	240,9	30,6	60,87	11,27
Canarias	801,1	281,4	62,33	25,99	457,9	152,7	70,70	25,00	343,2	128,7	54,05	27,28
Cantabria	250,7	31,6	56,94	11,20	141,6	16,2	65,46	10,27	109,1	15,4	48,88	12,38
Castilla y Leon	1.026,4	153,5	54,52	13,01	605,5	71,9	63,37	10,61	420,9	81,6	45,88	16,24
Castilla-La Mancha	801,5	180,0	57,69	18,34	490,1	98,0	68,64	16,67	311,4	82,0	46,59	20,84
Cataluña	3.199,2	607,2	62,72	15,95	1.747,0	345,2	70,31	16,50	1.452,3	262,0	55,42	15,28
Comunitat Valenciana	2.005,5	564,2	61,25	21,96	1.126,3	332,7	70,23	22,81	879,2	231,5	52,44	20,84
Extremadura	393,9	92,9	53,84	19,09	242,6	43,2	64,06	15,13	151,3	49,7	43,88	24,72
Galicia	1.151,1	162,2	55,06	12,35	630,6	82,1	62,53	11,52	520,5	80,1	48,22	13,34
Madrid (Comunid.de)	2.881,7	483,7	64,31	14,37	1.550,5	263,3	72,10	14,52	1.331,2	220,4	57,09	14,20
Murcia (Región de)	570,7	151,4	61,23	20,97	320,0	97,6	70,21	23,37	250,7	53,8	52,10	17,67
Navarra (C. Foral de)	276,4	32,0	60,27	10,39	157,7	16,8	68,59	9,63	118,7	15,2	52,04	11,37
País Vasco	924,4	120,7	57,31	11,55	507,6	65,3	64,89	11,40	416,8	55,4	50,19	11,74
Rioja (La)	138,1	20,9	59,56	13,12	80,0	11,5	68,40	12,54	58,1	9,4	50,69	13,91
Ceuta	26,0	6,3	56,53	19,45	17,2	2,3	66,99	12,03	8,9	3,9	45,65	30,77
Melilla	21,2	6,5	52,10	23,39	13,7	2,5	64,54	15,37	7,5	4,0	41,04	34,62

* Data below 5,000 are subject to strong variations, due to sampling errors

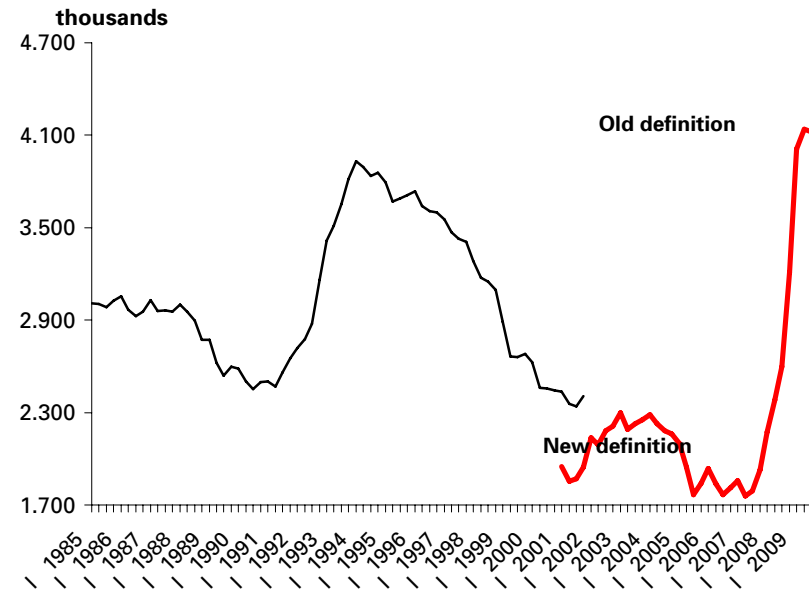
Employed and unemployed by sex

APS Third Quarter 2009

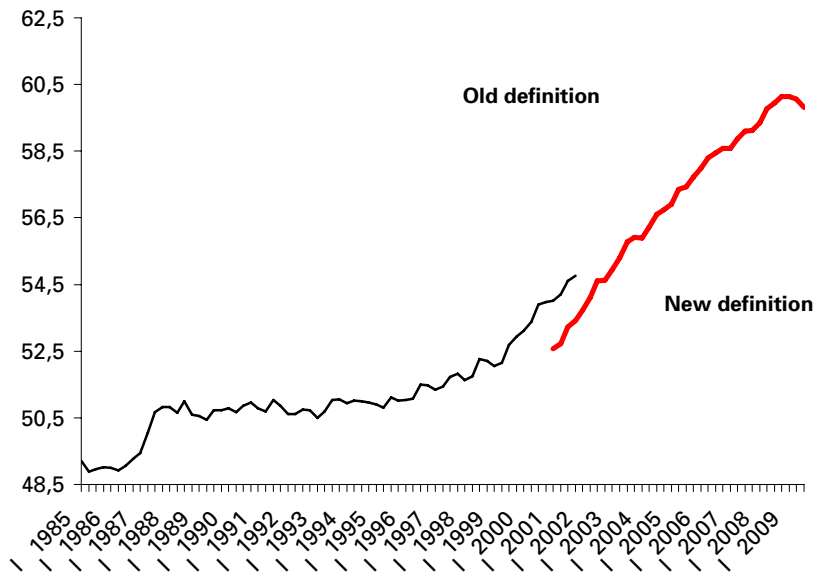
Employment



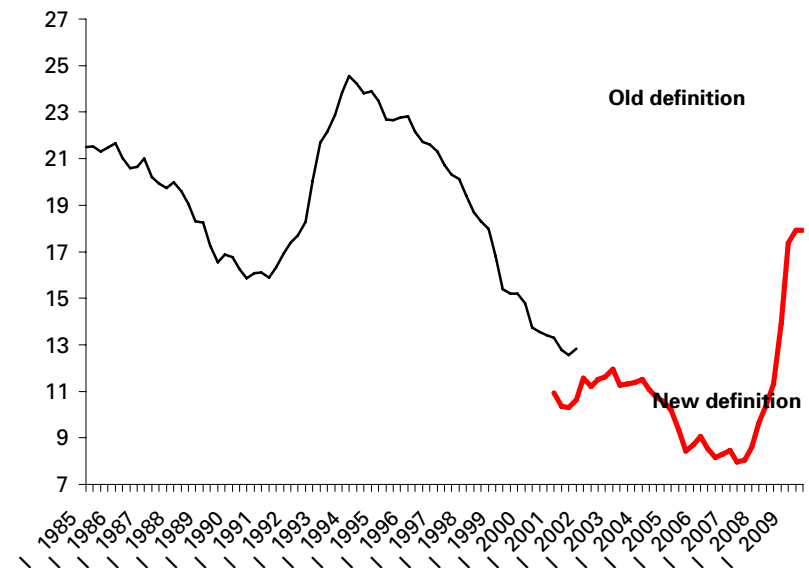
Unemployment



Activity rate



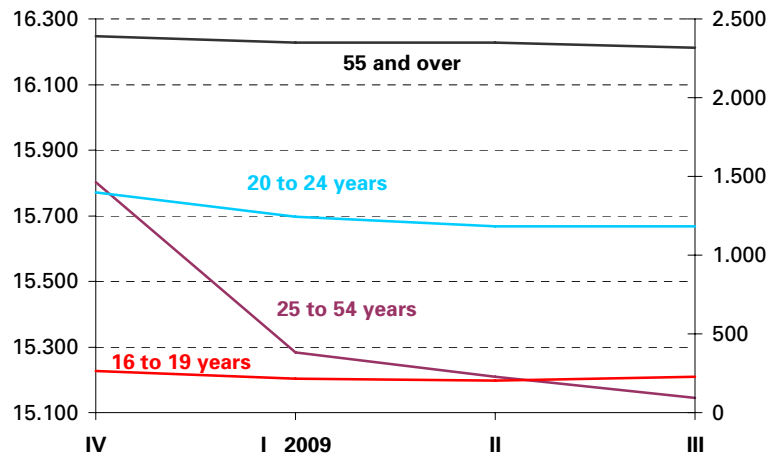
Unemployment rate



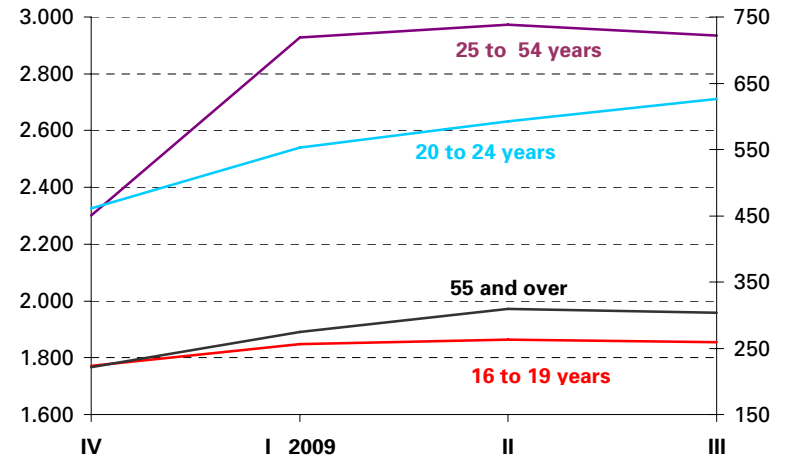
Employed and Unemployed by age

APS Third Quarter 2009

Employment

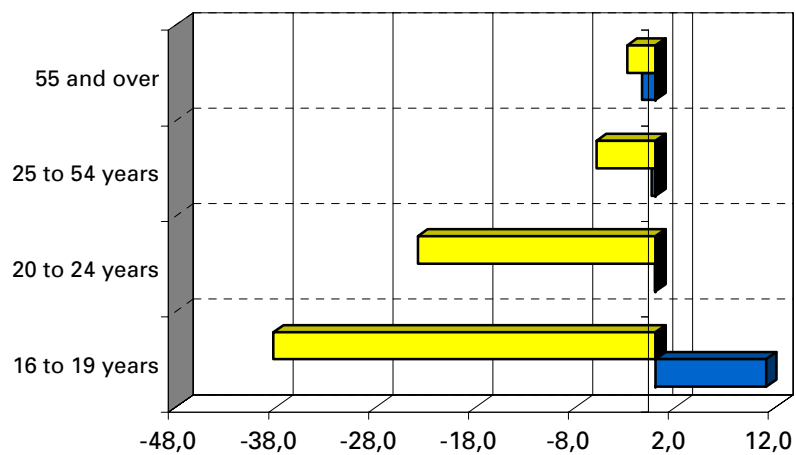


Unemployment



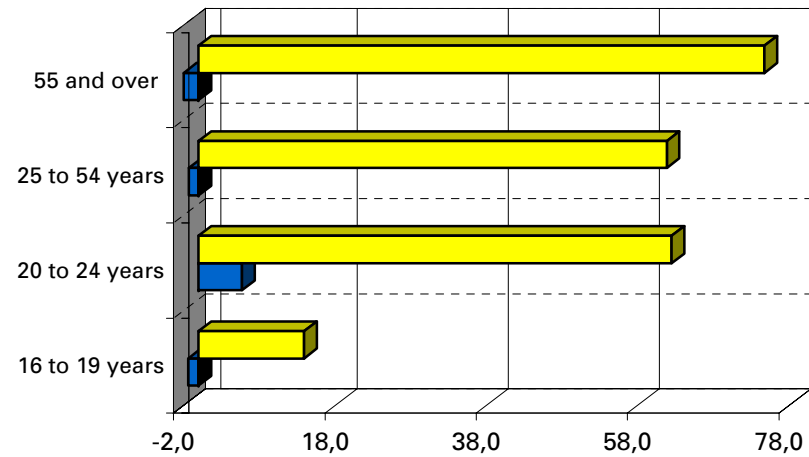
Variation percentages over the previous quarter and over the same quarter of the previous year

Employment



■ previous quarter ■ same quarter, previous year

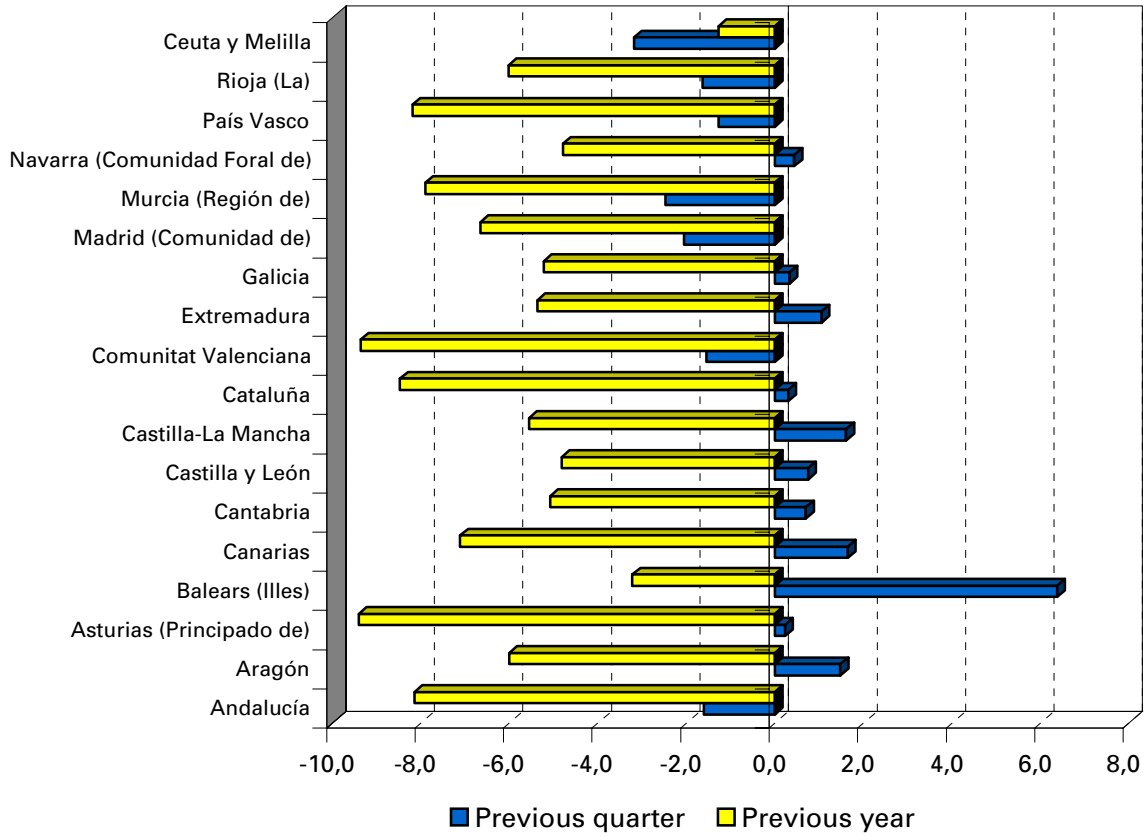
Unemployment



■ previous quarter ■ same quarter, previous year

Employment variation percentages over the previous quarter and over the same quarter of the previous year

Third Quarter 2009



Unemployment rate (Spain = 17,93)

