

29 October 2010

Economically Active Population Survey (EAPS) Third quarter of 2010

Main results

- The third quarter of 2010 registers a new increase in employment, of 69,900 persons, reaching 18,546,800 employed persons. The interannual employment variation rate stands at -1.71%.
- Given that the economically active population remains practically unaltered this quarter, the increase in the number of employed persons translates as a very similar decrease in unemployment, which drops by 70,800 persons, with the total number of unemployed persons standing at 4,574,700.
- The unemployment rate drops more than three tenths, standing at 19.79%. In turn, the activity rate continues above 60%, almost the same as the previous quarter.
- The evolution of the labour market has been more favourable for men than for women this quarter, in both employment and unemployment. By age, employment increases in persons under 25 years of age and over 44 years old.
- The Services sector presents 144,000 more employed persons. The rest of the sectors lose employment.
- Wage-earners with a temporary contract increase by 127,800 persons this quarter, whereas wage-earners with a permanent contract drop by 34,900.
- The number of households with all of their active members unemployed drops by 15,900 during this quarter, standing at 1,292,300. This is the first drop observed in this indicator since 2007.
- By Autonomous Community, the unemployment rate fluctuates between 9.98% in País Vasco, and 28.67% in Canarias. The activity rate fluctuates between the 51.83% recorded in Principado de Asturias and the 68.13% recorded in Illes Balears. This quarter, major differences are observed in the evolution of employment and unemployment. Thus, employment grows by 34,500 persons in Cataluña, but drops by 43,400 in Andalucía. Unemployment decreases by 18,000 persons in Comunidad de Madrid, but increases by 25,500 in Andalucía.

Economically active population and activity rate

The growth of the active population observed in the second quarter did not continue in the third quarter. The number of active persons stood at 23,121,500 persons, practically the same figure as that recorded the previous quarter.

The activity rate continued to be above 60%. The female rate, continuing to rise, reached a new maximum (52.22%), even if it only rose three hundredths, as compared with the second quarter.

The distance between the activity rates of Spaniards and foreign nationals remained at nearly 20 points, in favour of the latter, this circumstance being explained by the different age structures of both populations.

Employment

Employment increased by 69,900 persons in the third quarter of the year, reaching 18,546,800. This was the second consecutive quarter recording an increase in employment since the year 2007.

The increase took place to a greater extent among men (42,200 more employed men) and the foreign population (45,500 more).

By age, the growth in employment was observed in persons under 25 years of age, on the one hand, and in persons 45 years old and over, on the other.

The *Services* sector was responsible for creating employment this quarter, with an increase of 144,000 employed persons. This increase compensated for the drop in the other three activity sectors (31,600 fewer persons employed in *Construction*, 18,300 in *Industry* and 24,100 in *Agriculture*).

By professional status, the decrease in self-employed work continued (18,500 fewer self-employed persons), whereas the number of wage earners increased by 92,900. This last figure was the balance, with an increase of 127,800 wage earners with a temporary contract, and a drop of 34,900 with a permanent contract. The temporary employment rate rose, as a result, standing at 25.56%, which was 68 hundredths higher than the previous quarter.

Part-time employment dropped by 126,700 persons this quarter, whilst full-time employed persons increased by 196,600. The percentage of persons working part-time stood at 12.79%.

In interannual terms, the variation of employment was -1.71, this rate being 76 hundredths higher than that registered the previous quarter. In one year, employment dropped by 323,400 persons, 193,800 of whom were wage earners and 96,100 of whom had a temporary contract.

In contrast to what occurred during the quarter, a greater interannual destruction of employment was observed among men (237,100) than among women (86,300).

Unemployment and unemployment rate

Given that the economically active population remained stable, the increase in employment this quarter translated as an equivalent decrease in unemployment. The number of

unemployed persons decreased by 70,800, standing at 4,574,700. In the last 12 months, the total figure of unemployed persons increased by 451,400 persons.

The unemployment rate decreased more than three tenths, as compared with the second quarter, reaching 19.79%.

The decrease in unemployment affected men (57,800 fewer) to a greater extent than women (13,000). The male unemployment rate was 19.29% and the female rate was 20.40%. The composition of unemployment observed since the year 2008 thus remained, with relatively little distance between the male and female rates, and a greater number of unemployed men than unemployed women.

The decrease in unemployment affected both Spaniards and foreign nationals. The former with greater amounts in absolute terms (43,800 fewer unemployed Spaniards), though in relative terms, the quarterly evolution of foreign nationals was more favourable. Although the unemployment rate of the foreign population returned to below 30%, it was still 11 points higher than that of persons with Spanish nationality.

Unemployment was reduced in all of the sectors, and especially in *Construction* (66,500 fewer unemployed persons) and *Services* (57,100). However, the number of long-term unemployed persons - those who have been seeking employment for more than one year - increased by 61,200 persons. Unemployment also increased among those persons looking for their first job. In the last 12 months, long-term unemployed persons presented the greatest rise (664,800 more), followed at a great distance by the remaining categories.

Mobility as related to economic activity

The probabilities of labour transition (mobility from one quarter to the next) showed a greater propensity towards changes with regard to economic activity. The probabilities that an employed or unemployed person this quarter was in the same situation the previous quarter were lower than those registered three months ago.

Households

The number of households in which all of the active members were unemployed experienced a drop for the first time in three years. Specifically, it decreased by 15,900 households this quarter, now standing at 1,292,300. In parallel, the number of households in which all of the active members were employed increased by 84,600 households, in such a way that now there are 9,260,100.

In an interannual comparison, the evolution in both cases was unfavourable. Those households with all of the active members unemployed grew by 155,800 households, while those with all of the active members employed decreased by 277,300.

Results by Autonomous Community

The incorporation of new active persons in the labour market was especially significant in Cataluña and Galicia. These two Communities, together with Illes Balears, also registered the greatest increases in employment (more than 20,000 in all cases).

The greatest quarter-on-quarter drops in the number of active persons were recorded in Andalucía, Comunidad de Madrid and País Vasco.

País Vasco was the only Community that presented a positive variation in employment in the last twelve months, whereas during the same period, decreases in employment of more than 50,000 persons were registered in Comunitat Valenciana and Andalucía.

Andalucía and Región de Murcia presented the most noteworthy quarterly increases in unemployment (more than 20,000 each). The most significant decreases took place in Comunidad de Madrid, Castilla-La Mancha and Illes Balears, all with more than 16,000 persons. In the last 12 months, all of the Autonomous Communities, except País Vasco, presented rises in unemployment.

País Vasco, Cantabria and Comunidad Foral de Navarra had unemployment rates under 13%. At the opposite end of the spectrum, Canarias and Andalucía presented unemployment rates that exceeded 28%. Activity rates fluctuated between the 68.13% recorded in Illes Balears and the 51.83% registered in Principado de Asturias.

Results by province

The provincial results summary of the EAPS may be accessed via the following link:

http://www.ine.es/daco/daco42/daco4211/epapro0310_en.pdf

All of the provincial information from this survey may be accessed via the following links:

- In the INEbase database
<http://www.ine.es/jaxiBD/menu.do?L=1&divi=EPA&his=0&type=db>
- In the TEMPUS database
<http://www.ine.es/menu/redir/GSTConsul.shtml?divi=EPA&language=1>

For further information see [INEbase-www.ine.es/en/welcome_en.htm](http://www.ine.es/en/welcome_en.htm) All press releases at: www.ine.es/en/prensa/prensa_en.htm

Press Office: Telephone numbers: 91 583 93 63 / 94 08 – Fax: 91 583 90 87 - gprensa@ine.es

Information Area: Telephone number: 91 583 91 00 – Fax: 91 583 91 58 – www.ine.es/infoinees/infoine

Methodological note

General features

The Economically Active Population Survey (EAPS) is a continuous, sample-based study aimed at family dwellings, and which has been conducted since 1964.

The additional sample collected by the *Galician Statistics Institute* (IGE) has been incorporated as of the third quarter of 2009, using the same fieldwork system and identical methodology to that of the INE. Therefore, apart from the 3,588 census sections that have made up the sample for the whole of Spain since 2005, we must take into account the 234 additional sections in the Autonomous Community of Galicia. Since the third quarter of 2009, the EAPS sample is made up of 3,822 census sections from the more than 30,000 census sections into which Spain is divided. An average of 18 households are surveyed in each one, except in the provinces of Barcelona, Madrid, Sevilla, Valencia and Zaragoza, where the number of households surveyed is 22. Thus, the sample size is approximately 65,000 dwellings, providing information on some 180,000 persons. The data is collected via personal and telephone interviews. The information is carefully filtered and computer-processed. Results are obtained within the month following the end of the reference quarter for the data.

Main definitions

Active persons: persons aged 16 and over who, during the reference week (the week prior to that when the interview is held), supplied labour for the production of economic goods and services, or were available to do so and carried out actions to incorporate themselves into said production. They are subdivided into employed and unemployed persons.

Employed persons: persons aged 16 and over who, during the reference week, worked for at least one hour in exchange for payment (salary, wage, business benefit, etc.) in cash or in kind. Persons who, being employed, had been temporarily absent from their job due to illness, holidays, etc., are also considered employed persons.

Employed persons are classified, considering their professional status, as non-wage earners (employers, businesspersons without wage earners and independent workers, cooperative members, family assistance) and wage earners (public or private).

Considering the length of the working day, employed persons are classified as full-time and part-time employed persons. The usual working week may not be shorter than 30 hours in the first case, nor exceed 35 hours in the second.

Wage earners are classified as permanent and temporary. For the latter, the end of their contract or work relationship is set by means of objective conditions, such as the expiry of a certain period of time, the completion of a specific task, etc.

A significant category within employment is that of **time-related underemployment**, defined in the 16th International Labour Statisticians Conference (Geneva, 1998). The EAPS considers persons suffering time-related underemployment as employed persons who would like to work more hours, who are available to work more hours and whose effective working hours in the reference week are less than the number of hours usually worked by employed persons working full-time in the same branch of activity as that in which the underemployed person develops his/her main job.

Unemployed persons: persons aged 16 and over who, during the reference week, were jobless, available for work, and actively looking for a job. Persons who might have already found a job and are waiting to start are also considered to be unemployed, provided that they meet the first two conditions.

According to European Commission Regulation 1897/2000, the following are considered as active search methods in the four weeks prior to the interview:

- Being in contact with a public employment office for the purpose of finding work, whatever part they play in the initiative (the renewal of registration due to purely administrative reasons does not constitute active planning).
- Being in contact with a private office (temporary employment agency, specialised hiring agency, etc.) with the objective of finding work.
- Having sent an application directly to employers.
- Having searched via personal relations and trade unions, etc.
- Having advertised oneself or responded to newspaper advertisements.
- Having studied job vacancies.
- Having taken part in a test, public exam or interview in the framework of a contracting procedure.
- Having looked for land, premises or material.
- Having taken steps to obtain permits, licences or financial resources.

Inactive persons: persons aged 16 years old and over not included in any of the above categories.

Economically Active Population Survey Third Quarter 2010

National results

(Continues)

	Current quarter	Variation on previous quarter		Variation on same quarter, previous year	
		Difference	Percentage	Difference	Percentage
1. Population aged 16 years and over by sex and labour status					
BOTH SEXES					
Population aged 16 years and over	38,485.4	17.7	0.05	43.0	0.11
Active population	23,121.5	-0.8	0.00	128.0	0.56
- Employed	18,546.8	69.9	0.38	-323.4	-1.71
- Unemployed	4,574.7	-70.8	-1.52	451.4	10.95
Inactive	15,363.9	18.5	0.12	-85.0	-0.55
Activity rate	60.08	-0.03	-	0.27	-
Unemployment rate	19.79	-0.31	-	1.85	-
Population aged 16 to 64 years	30,817.8	-15.0	-0.05	-85.8	-0.28
Activity rate (16-64)	74.53	0.05	-	0.61	-
Unemployment rate (16-64)	19.90	-0.30	-	1.86	-
Employment rate (16-64)	59.69	0.27	-	-0.89	-
MALES					
Population aged 16 years and over	18,827.9	0.4	0.00	-27.5	-0.15
Active population	12,856.3	-15.6	-0.12	-47.8	-0.37
- Employed	10,376.2	42.2	0.41	-237.1	-2.23
- Unemployed	2,480.2	-57.8	-2.28	189.3	8.26
Inactive	5,971.5	15.9	0.27	20.4	0.34
Activity rate	68.28	-0.08	-	-0.15	-
Unemployment rate	19.29	-0.43	-	1.54	-
Population aged 16 to 64 years	15,540.6	-14.8	-0.10	-86.6	-0.55
Activity rate (16-64)	82.15	-0.01	-	0.17	-
Unemployment rate (16-64)	19.40	-0.42	-	1.53	-
Employment rate (16-64)	66.21	0.34	-	-1.12	-
FEMALES					
Population aged 16 years and over	19,657.6	17.3	0.09	70.4	0.36
Active population	10,265.2	14.7	0.14	175.8	1.74
- Employed	8,170.6	27.7	0.34	-86.3	-1.05
- Unemployed	2,094.6	-13.0	-0.62	262.1	14.30
Inactive	9,392.4	2.6	0.03	-105.4	-1.11
Activity rate	52.22	0.03	-	0.71	-
Unemployment rate	20.40	-0.16	-	2.24	-
Population aged 16 to 64 years	15,277.2	-0.2	0.00	0.8	0.01
Activity rate (16-64)	66.77	0.13	-	1.11	-
Unemployment rate (16-64)	20.53	-0.16	-	2.27	-
Employment rate (16-64)	53.07	0.21	-	-0.61	-

2. Spanish population¹ aged 16 years and over by labour status

SPANISH POPULATION AGED 16 YEARS AND OVER	33,728.4	14.1	0.04	62.8	0.19
Active population	19,447.1	-19.3	-0.10	112.4	0.58
- Employed	15,950.8	24.4	0.15	-267.2	-1.65
- Unemployed	3,496.3	-43.8	-1.24	379.6	12.18
Inactive	14,281.4	33.5	0.24	-49.7	-0.35
Activity rate	57.66	-0.08	-	0.23	-
Unemployment rate	17.98	-0.21	-	1.86	-

¹ including dual nationality

National results

(Continuation)

	Current quarter	Variation on previous quarter		Variation on same quarter, previous year	
		Difference	Percentage	Difference	Percentage
3. Foreign population aged 16 years and over by labour status					
FOREIGN POPULATION AGED 16 YEARS AND OVER	4,757.0	3.5	0.07	-19.8	-0.41
Active population	3,674.4	18.5	0.51	15.6	0.43
- Employed	2,596.0	45.5	1.78	-56.2	-2.12
- Unemployed	1,078.4	-27.0	-2.44	71.8	7.13
Inactive	1,082.6	-15.0	-1.37	-35.4	-3.16
Activity rate	77.24	0.33	-	0.65	-
Unemployment rate	29.35	-0.89	-	1.84	-
4. Employed by sex, age group and economic sector					
BOTH SEXES	18,546.8	69.9	0.38	-323.4	-1.71
16 to 19 years	162.0	7.2	4.67	-64.5	-28.46
20 to 24 years	1,090.8	45.7	4.38	-90.9	-7.69
25 to 29 years	2,131.1	-25.0	-1.16	-164.4	-7.16
30 to 34 years	2,854.8	-7.4	-0.26	-82.4	-2.80
35 to 39 years	2,843.1	-4.4	-0.15	-2.8	-0.10
40 to 44 years	2,633.2	-19.9	-0.75	-49.8	-1.86
45 to 49 years	2,445.5	20.3	0.84	18.9	0.78
50 to 54 years	2,033.6	32.6	1.63	76.3	3.90
55 and over	2,352.6	20.7	0.89	36.0	1.56
MALES	10,376.2	42.2	0.41	-237.1	-2.23
16 to 19 years	96.1	2.2	2.38	-37.3	-27.99
20 to 24 years	567.4	20.4	3.73	-56.9	-9.11
25 to 29 years	1,106.9	-2.8	-0.25	-90.0	-7.52
30 to 34 years	1,564.9	-3.1	-0.20	-54.3	-3.35
35 to 39 years	1,605.6	-0.5	-0.03	16.0	1.00
40 to 44 years	1,483.6	-3.9	-0.26	-14.8	-0.99
45 to 49 years	1,370.6	10.8	0.79	-1.6	-0.12
50 to 54 years	1,153.0	14.6	1.28	11.4	1.00
55 and over	1,428.2	4.5	0.32	-9.5	-0.66
FEMALES	8,170.6	27.7	0.34	-86.3	-1.05
16 to 19 years	66.0	5.0	8.21	-27.1	-29.13
20 to 24 years	523.5	25.4	5.09	-34.0	-6.10
25 to 29 years	1,024.2	-22.2	-2.12	-74.4	-6.77
30 to 34 years	1,289.9	-4.3	-0.33	-28.1	-2.13
35 to 39 years	1,237.5	-3.8	-0.31	-18.8	-1.49
40 to 44 years	1,149.6	-16.0	-1.37	-35.0	-2.95
45 to 49 years	1,075.0	9.5	0.89	20.5	1.94
50 to 54 years	880.6	18.0	2.08	65.0	7.97
55 and over	924.4	16.2	1.78	45.5	5.18
TOTAL EMPLOYED	18,546.8	69.9	0.38	-323.4	-1.71
Agriculture	754.0	-24.1	-3.10	16.9	2.29
Industry	2,600.6	-18.3	-0.70	-119.0	-4.38
Construction	1,668.1	-31.6	-1.86	-182.3	-9.85
Services	13,524.1	144.0	1.08	-39.0	-0.29

National results

(Continuation)

	Current quarter	Variation on previous quarter		Variation on same quarter, previous year	
		Difference	Percentage	Difference	Percentage
5. Employed by professional status, type of contract and working hours					
TOTAL EMPLOYED	18,546.8	69.9	0.38	-323.4	-1.71
Self-employed workers	3,085.4	-18.5	-0.60	-124.1	-3.87
- Employers	1,008.0	-28.6	-2.76	-53.6	-5.05
- Independent workers	1,896.8	11.7	0.62	-37.0	-1.91
- Cooperatives members	30.8	0.9	2.90	-3.3	-9.63
- Family workers	149.8	-2.4	-1.58	-30.2	-16.79
Employees	15,456.3	92.9	0.60	-193.8	-1.24
- With a permanent job	11,506.5	-34.9	-0.30	-97.7	-0.84
- With a temporary job	3,949.9	127.8	3.34	-96.1	-2.38
Others	5.0	-4.5	-47.14	-5.4	-51.91
FULL-TIME EMPLOYED	16,174.8	196.6	1.23	-379.2	-2.29
Males	9,831.9	65.9	0.67	-281.2	-2.78
Females	6,342.9	130.7	2.10	-98.0	-1.52
PART-TIME EMPLOYED	2,371.9	-126.7	-5.07	55.8	2.41
Males	544.2	-23.7	-4.17	44.1	8.82
Females	1,827.7	-103.0	-5.34	11.7	0.64

6. Unemployed by sex, age group, and economic sector

BOTH SEXES	4,574.7	-70.8	-1.52	451.4	10.95
16 to 19 years	242.3	-13.5	-5.27	-16.9	-6.52
20 to 24 years	618.5	3.2	0.52	-8.0	-1.28
25 to 54 years	3,348.1	-65.2	-1.91	413.7	14.10
55 and over	365.8	4.8	1.32	62.7	20.67
MALES	2,480.2	-57.8	-2.28	189.3	8.26
16 to 19 years	137.1	-9.1	-6.22	-14.6	-9.62
20 to 24 years	333.6	-12.7	-3.67	-6.9	-2.03
25 to 54 years	1,780.3	-36.8	-2.02	156.8	9.66
55 and over	229.1	0.8	0.35	54.0	30.81
FEMALES	2,094.6	-13.0	-0.62	262.1	14.30
16 to 19 years	105.2	-4.4	-4.01	-2.3	-2.15
20 to 24 years	284.8	15.9	5.92	-1.1	-0.40
25 to 54 years	1,567.8	-28.4	-1.78	256.9	19.60
55 and over	136.7	4.0	2.98	8.7	6.79
TOTAL UNEMPLOYED	4,574.7	-70.8	-1.52	451.4	10.95
Agriculture	232.2	-3.4	-1.43	17.1	7.97
Industry	245.2	-21.6	-8.11	-114.5	-31.84
Construction	461.1	-66.5	-12.60	-160.9	-25.87
Services	1,385.7	-57.1	-3.96	-19.0	-1.35
Lost their job more than 1 year ago	1,872.0	61.2	3.38	664.8	55.06
First job seekers	378.4	16.6	4.59	64.0	20.35

National results

(Conclusion)

	Current quarter	Variation on previous quarter		Variation on same quarter, previous year	
		Difference	Percentage	Difference	Percentage

7. Unemployment rate by relationship with the reference person

	Current quarter	Variation on previous quarter Difference	Percentage	Variation on same quarter, previous year Difference	Percentage
TOTAL	19.79	-0.31	-	1.85	-
Reference person	16.11	-0.48	-	1.44	-
Spouse or partner	16.78	-0.03	-	2.04	-
Child	31.67	-0.44	-	2.53	-
Other relatives	27.38	-0.43	-	4.48	-
Unrelated persons	19.27	-0.59	-	0.63	-

8. Household data

	Current quarter	Variation on previous quarter Difference	Percentage	Variation on same quarter, previous year Difference	Percentage
TOTAL HOUSEHOLDS	17,199.6	71.8	0.42	83.7	0.49
Households with at least one active member	12,924.9	21.3	0.17	58.2	0.45
- All member employed	9,260.1	84.6	0.92	-277.3	-2.91
- All member unemployed	1,292.3	-15.9	-1.22	155.8	13.71
Households without any active population	4,274.7	50.5	1.20	25.5	0.60

Mobility according to activity in current and previous quarter

Classification in previous quarter	Classification in current quarter			
	Total	Employed	Unemployed	Inactive
BOTH SEXES				
Total	100.00	100.00	100.00	100.00
Employed	48.01	92.23	18.28	3.83
Unemployed	11.53	5.02	62.68	4.70
Inactive	40.46	2.75	19.04	91.48
MALES				
Total	100.00	100.00	100.00	100.00
Employed	55.16	93.12	19.01	3.88
Unemployed	12.72	5.00	67.19	4.51
Inactive	32.11	1.88	13.80	91.61
FEMALES				
Total	100.00	100.00	100.00	100.00
Employed	41.20	91.10	17.44	3.79
Unemployed	10.39	5.04	57.44	4.82
Inactive	48.42	3.86	25.12	91.39

Grossing up factors of current quarter (forward analysis)

Results by Autonomous Communities

(Continues)

	Current quarter	Variation on previous quarter		Variation on same quarter, previous year	
		Difference	Percentage	Difference	Percentage
1. Population aged 16 years and over					
TOTAL	38,485.4	17.7	0.05	43.0	0.11
Andalucía	6,764.9	8.2	0.12	43.9	0.65
Aragón	1,110.3	-0.7	-0.07	-9.1	-0.81
Asturias (Principado de)	930.6	-1.0	-0.10	-2.4	-0.25
Balears (Illes)	896.2	3.8	0.42	4.1	0.46
Canarias	1,745.2	3.5	0.20	8.4	0.49
Cantabria	495.2	0.0	0.01	-0.6	-0.12
Castilla y León	2,147.9	-1.9	-0.09	-16.2	-0.75
Castilla-La Mancha	1,700.7	2.6	0.16	-0.5	-0.03
Cataluña	6,078.1	5.1	0.08	9.2	0.15
Comunitat Valenciana	4,165.8	0.2	0.01	-29.6	-0.71
Extremadura	906.5	0.2	0.02	2.2	0.24
Galicia	2,383.2	0.0	0.00	-2.1	-0.09
Madrid (Comunidad de)	5,260.9	-1.7	-0.03	27.6	0.53
Murcia (Región de)	1,187.4	0.4	0.03	8.2	0.69
Navarra (Comunidad Foral de)	513.1	0.3	0.06	1.4	0.27
País Vasco	1,820.6	-1.6	-0.09	-3.2	-0.17
Rioja (La)	263.8	-0.5	-0.20	-3.1	-1.15
Ceuta	59.3	0.3	0.45	2.1	3.75
Melilla	55.8	0.5	0.85	2.7	5.01

2. Active population

TOTAL	23,121.5	-0.8	0.00	128.0	0.56
Andalucía	3,956.3	-17.9	-0.45	77.6	2.00
Aragón	640.1	-5.2	-0.81	-20.3	-3.07
Asturias (Principado de)	482.3	2.2	0.46	-2.5	-0.52
Balears (Illes)	610.5	5.3	0.87	3.5	0.57
Canarias	1,082.1	5.8	0.54	-0.4	-0.04
Cantabria	274.7	-5.5	-1.95	-7.7	-2.71
Castilla y León	1,195.0	6.0	0.51	15.2	1.29
Castilla-La Mancha	977.9	-3.6	-0.37	-3.6	-0.37
Cataluña	3,845.5	27.8	0.73	39.1	1.03
Comunitat Valenciana	2,516.0	-8.7	-0.34	-53.7	-2.09
Extremadura	496.6	-4.2	-0.84	9.8	2.01
Galicia	1,314.0	18.6	1.43	0.7	0.06
Madrid (Comunidad de)	3,416.0	-16.1	-0.47	50.7	1.51
Murcia (Región de)	740.2	5.6	0.76	18.1	2.51
Navarra (Comunidad Foral de)	308.7	-2.7	-0.87	0.3	0.10
País Vasco	1,045.3	-10.3	-0.97	0.2	0.01
Rioja (La)	159.1	2.2	1.39	0.1	0.06
Ceuta	31.9	-0.9	-2.74	-0.4	-1.17
Melilla	29.1	0.8	2.95	1.4	5.02

* Data below 5000 are subject to strong variations, due to sampling error

Results by Autonomous Communities

(Conclusion)

	Current quarter	Variation on previous quarter		Variation on same quarter, previous year	
		Difference	Percentage	Difference	Percentage
3. Employed					
TOTAL	18,546.8	69.9	0.38	-323.4	-1.71
Andalucía	2,826.8	-43.4	-1.51	-57.5	-1.99
Aragón	553.0	-0.8	-0.14	-28.1	-4.84
Asturias (Principado de)	413.4	11.9	2.97	-6.4	-1.52
Balears (Illes)	506.0	21.4	4.41	-11.1	-2.14
Canarias	771.9	12.8	1.69	-29.3	-3.65
Cantabria	241.2	0.0	0.00	-9.5	-3.78
Castilla y León	1,013.7	18.7	1.88	-12.7	-1.24
Castilla-La Mancha	785.2	13.3	1.73	-16.3	-2.03
Cataluña	3,176.1	34.5	1.10	-23.2	-0.72
Comunitat Valenciana	1,927.1	4.1	0.21	-78.4	-3.91
Extremadura	385.3	-3.2	-0.81	-8.6	-2.18
Galicia	1,118.7	25.1	2.29	-32.4	-2.81
Madrid (Comunidad de)	2,870.4	1.9	0.07	-11.3	-0.39
Murcia (Región de)	562.9	-15.5	-2.67	-7.8	-1.36
Navarra (Comunidad Foral de)	270.2	-7.1	-2.55	-6.2	-2.23
País Vasco	941.0	-4.7	-0.50	16.6	1.80
Rioja (La)	136.8	-0.9	-0.68	-1.3	-0.94
Ceuta	24.8	0.7	3.02	-1.3	-4.83
Melilla	22.3	1.0	4.54	1.1	5.06

4. Unemployed

TOTAL	4,574.7	-70.8	-1.52	451.4	10.95
Andalucía	1,129.5	25.5	2.31	135.1	13.59
Aragón	87.2	-4.4	-4.84	7.8	9.86
Asturias (Principado de)	68.9	-9.7	-12.35	3.9	5.93
Balears (Illes)	104.5	-16.1	-13.37	14.6	16.17
Canarias	310.2	-7.1	-2.23	28.8	10.25
Cantabria	33.4	-5.5	-14.07	1.8	5.79
Castilla y León	181.4	-12.6	-6.52	27.9	18.17
Castilla-La Mancha	192.6	-16.9	-8.08	12.6	7.02
Cataluña	669.4	-6.7	-0.99	62.2	10.25
Comunitat Valenciana	588.9	-12.8	-2.13	24.7	4.37
Extremadura	111.3	-1.1	-0.94	18.4	19.76
Galicia	195.3	-6.5	-3.22	33.1	20.40
Madrid (Comunidad de)	545.6	-18.0	-3.20	62.0	12.81
Murcia (Región de)	177.3	21.0	13.47	25.9	17.11
Navarra (Comunidad Foral de)	38.5	4.4	12.81	6.5	20.20
País Vasco	104.3	-5.5	-5.05	-16.5	-13.65
Rioja (La)	22.3	3.1	16.32	1.4	6.68
Ceuta	7.2	-1.6	-18.50	0.9	13.99
Melilla	6.8	-0.1	-1.94	0.3	4.92

* Data below 5,000 are subject to strong variations, due to sampling error

Results by Autonomous Communities

(Absolute figures in thousands and rates in percentage)

5. Employed and unemployed by sex. Activity and unemployment rates

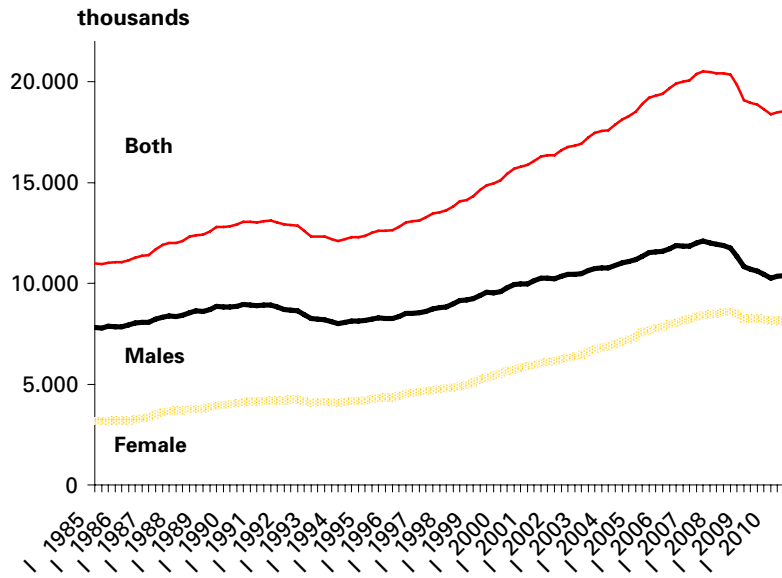
	Both sexes				Males				Females			
	Employed	Unemployed	Activity rate	Unem. rate	Employed	Unemployed	Activity rate	Unem. Rate	Employed	Unemployed	Activity rate	Unem. Rate
TOTAL	18,546.8	4,574.7	60.08	19.79	10,376.2	2,480.2	68.28	19.29	8,170.6	2,094.6	52.22	20.40
Andalucía	2,826.8	1,129.5	58.48	28.55	1,644.5	606.5	67.68	26.94	1,182.2	523.1	49.59	30.67
Aragón	553.0	87.2	57.66	13.62	312.7	48.1	65.70	13.32	240.2	39.1	49.78	14.00
Asturias	413.4	68.9	51.83	14.29	225.9	35.8	59.32	13.68	187.5	33.1	45.08	15.01
Baleares (Illes)	506.0	104.5	68.13	17.12	271.0	61.7	74.51	18.54	235.0	42.9	61.79	15.43
Canarias	771.9	310.2	62.00	28.67	429.0	177.0	69.99	29.20	342.8	133.3	54.14	27.99
Cantabria	241.2	33.4	55.47	12.18	134.3	18.0	63.43	11.84	106.9	15.4	47.97	12.59
Castilla y Leon	1,013.7	181.4	55.64	15.18	585.4	89.5	63.80	13.26	428.3	91.9	47.72	17.66
Castilla-La Mancha	785.2	192.6	57.50	19.70	481.7	100.0	68.16	17.19	303.5	92.6	46.76	23.38
Cataluña	3,176.1	669.4	63.27	17.41	1,731.3	383.2	71.23	18.12	1,444.8	286.2	55.67	16.53
Comunitat Valenciana	1,927.1	588.9	60.40	23.41	1,077.0	328.6	68.41	23.38	850.1	260.3	52.60	23.44
Extremadura	385.3	111.3	54.79	22.41	233.5	57.1	64.98	19.66	151.9	54.1	44.86	26.28
Galicia	1,118.7	195.3	55.14	14.86	612.4	99.7	62.57	14.00	506.3	95.6	48.34	15.88
Madrid (Comunid.de)	2,870.4	545.6	64.93	15.97	1,534.1	276.9	71.89	15.29	1,336.3	268.7	58.54	16.74
Murcia (Región de)	562.9	177.3	62.34	23.95	326.3	104.2	71.89	24.21	236.7	73.1	52.62	23.60
Navarra (C. Foral de)	270.2	38.5	60.16	12.47	153.8	18.2	67.70	10.56	116.4	20.3	52.77	14.88
País Vasco	941.0	104.3	57.41	9.98	515.1	56.4	65.03	9.87	425.9	47.9	50.31	10.10
Rioja (La)	136.8	22.3	60.29	13.99	78.3	11.8	68.84	13.04	58.5	10.5	51.88	15.22
Ceuta	24.8	7.2	53.85	22.44	16.0	4.5	67.00	22.11	8.8	2.6	39.84	23.02
Melilla	22.3	6.8	52.11	23.37	13.9	3.0	63.38	17.62	8.4	3.8	41.81	31.34

* Data below 5,000 are subject to strong variations, due to sampling errors

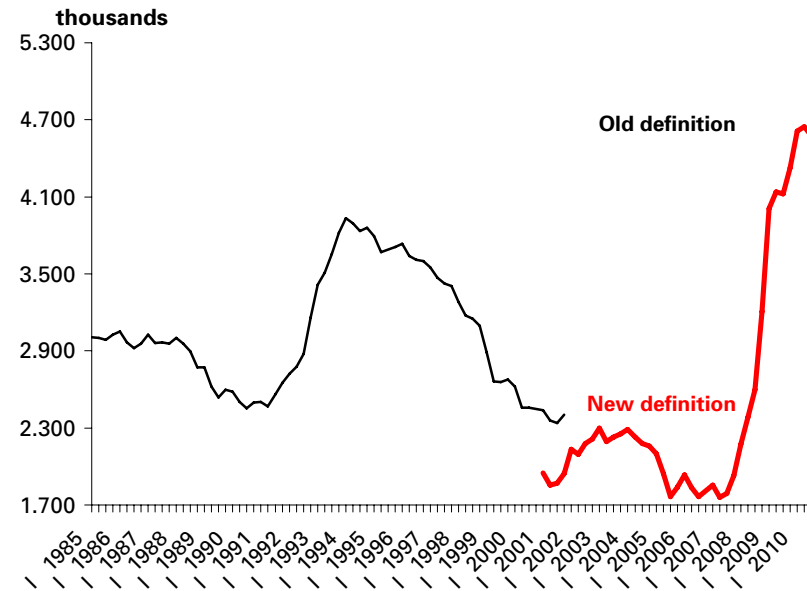
Employed and unemployed by sex

APS Third Quarter 2010

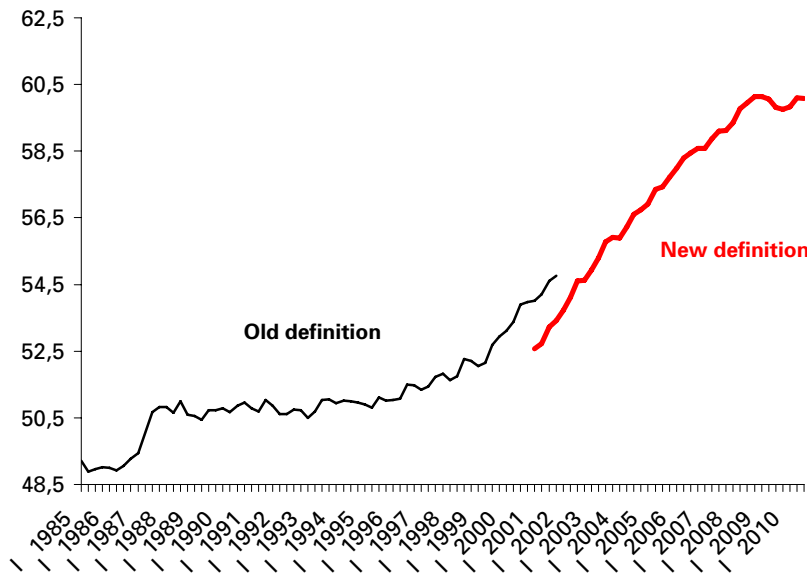
Employment



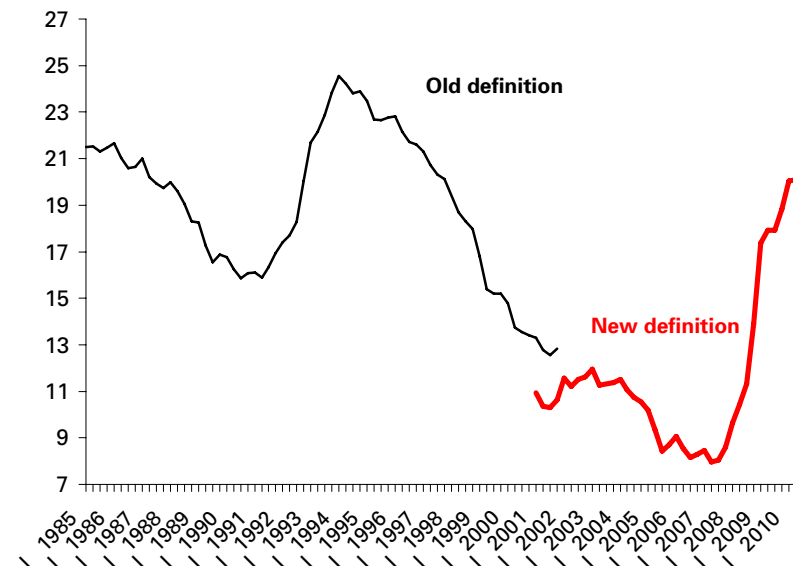
Unemployment



Activity rate



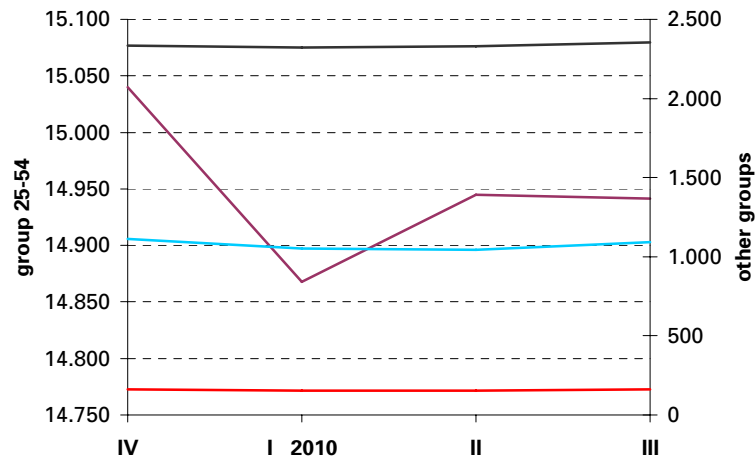
Unemployment rate



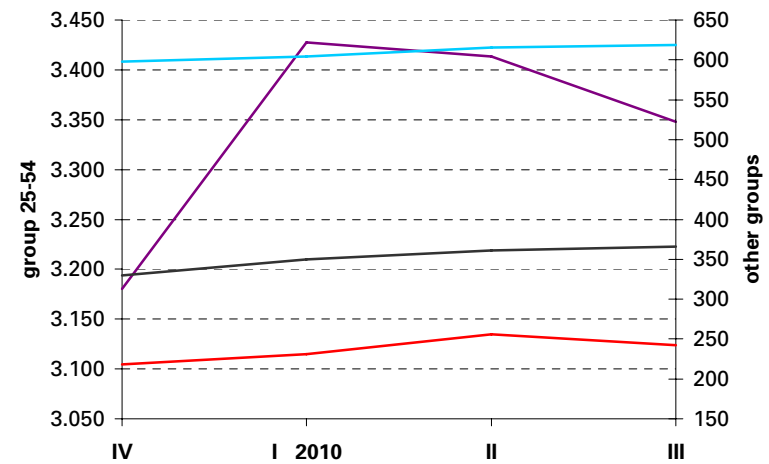
Employed and Unemployed by age

APS Third Quarter 2010

Employment (thousands)

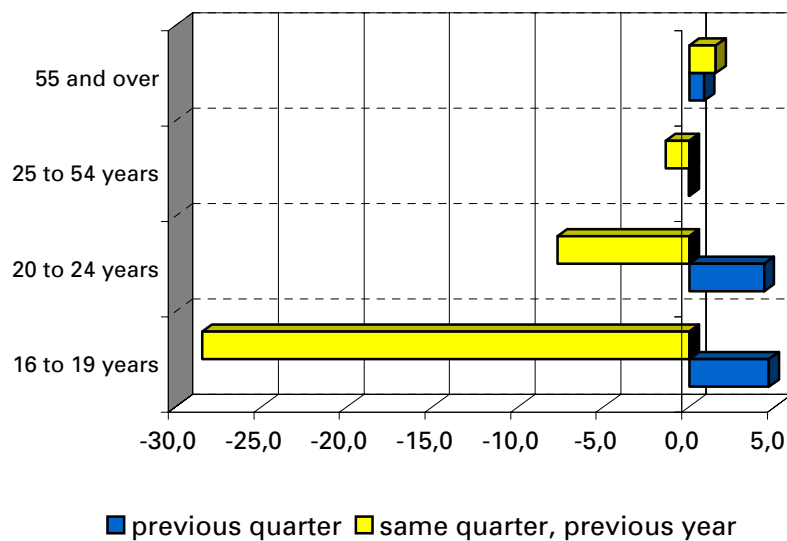


Unemployment (thousands)

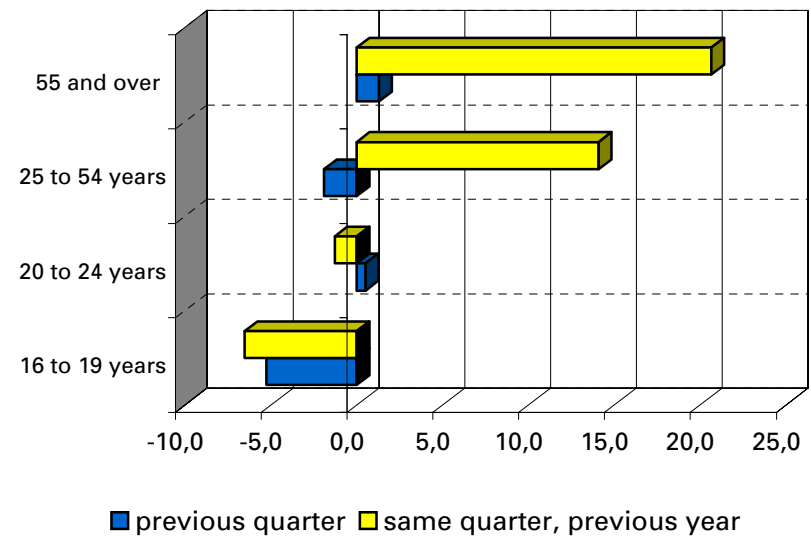


Variation percentages over the previous quarter and over the same quarter of the previous year

Employment

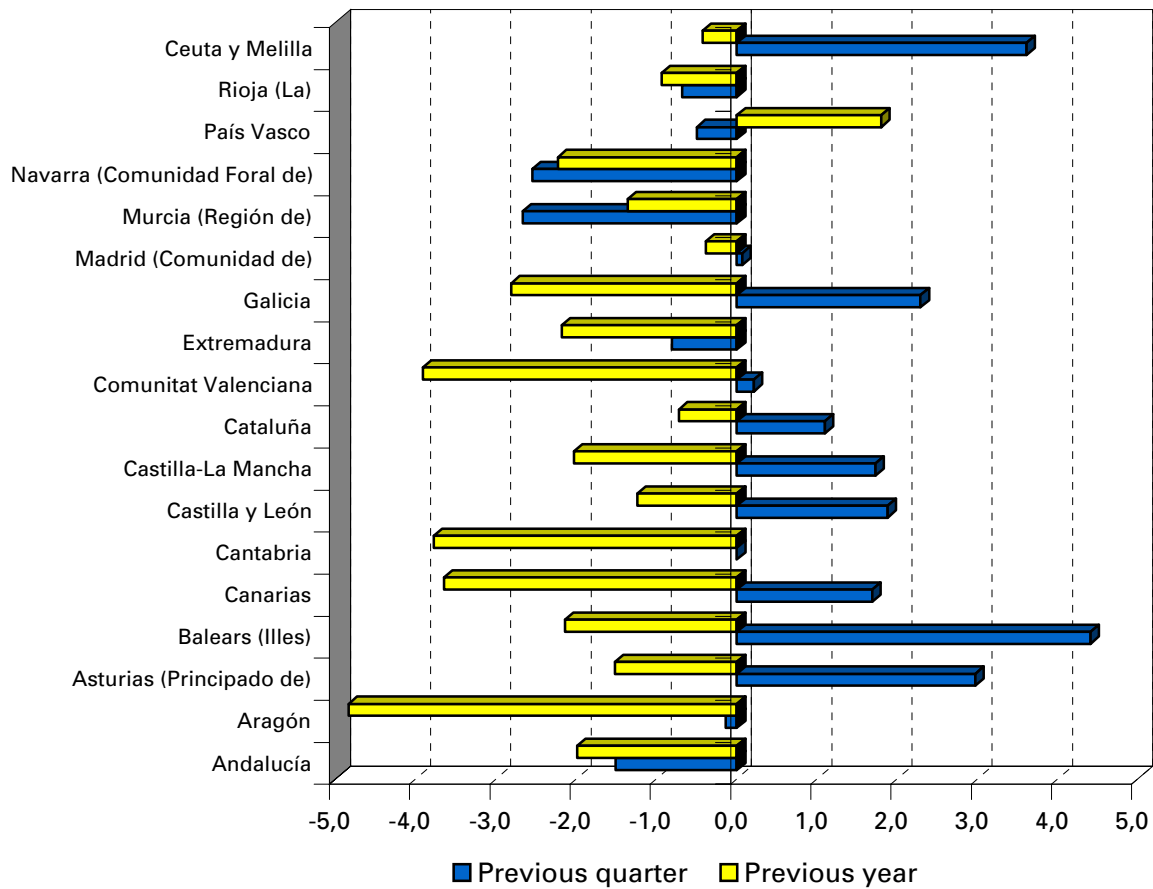


Unemployment



Employment variation percentages over the previous quarter and over the same quarter of the previous year

Third Quarter 2010



Unemployment rate (Spain = 19,79)

