

## **Economically Active Population Survey (EAPS)**

Third quarter of 2011

### **Main results**

- Employment in the third quarter of 2011 registers a decrease of 146,800 persons, reaching a total of 18,156,300 employed persons. The interannual employment variation rate stands at -2.11%.
- The economically active population drops by 2,100 persons. The number of unemployed persons increases by 144,700 persons, the figure thus standing at 4,978,300.
- The unemployment rate increases somewhat more than six tenths, now standing at 21.52%. In turn, the activity rate remains above 60%.
- By sex, both the decrease in employment and the increase in unemployment are more substantial for women than for men.
- Employment decreased in *Construction*, *Services* and *Agriculture*, and remained unchanged in *Industry*.
- The total number of wage earners with a permanent contract drops by 160,600, while that of wage earners with temporary contract grows by 47,600.
- The number of households with all of their active members unemployed increases by 57,700 this quarter, standing at 1,425,200.
- By Autonomous Community, the unemployment rate fluctuates between 11.68% in Comunidad Foral de Navarra and 30.93% in Andalucía. The activity rate fluctuates between the 51.72% recorded in Principado de Asturias, and 67.95% in Illes Balears.
- Employment registers its greatest increase this quarter in Illes Balears and Castilla y León. In contrast, the greatest decreases are recorded in Comunidad de Madrid, Cataluña, and Andalucía. In turn, unemployment experiences its greatest decrease in Aragón and Castilla-La Mancha, while it registers the greatest increases in Andalucía, Cataluña and Comunidad de Madrid.

## **Economically active population and activity rate**

The economically active population experienced a decrease of 2,100 persons in the third quarter of 2011. The number of economically active persons stood at 23,134,600 persons.

In interannual terms, the number of economically active persons increased by 13,100 persons, this figure being greater than the growth of the population.

The activity rate remains practically unaltered regarding the second quarter, standing at 60.11%. The female activity rate decreased 21 hundredths, reaching 52.93%, while the male rate increased 20 hundredths, reaching 67.64%.

The distance between the activity rates of Spaniards and foreign nationals was almost 18 points, in favour of the latter, this circumstance being largely explained by the different age structures of both populations.

## **Employment**

The number of employed persons decreased by 146,800 persons in the third quarter of 2011, standing at 18,156,300.

The drop in employment affected women (114,000 fewer unemployed women) more than men (32,800 less). The number of employed foreign nationals decreased by 62,200, and that of Spaniards did so by 84,600.

By age, employment grew among young persons under 25 years old. In contrast, persons aged 25 years old and over registered the greatest decreases in employment for this quarter.

The number of employed persons decreased slightly in *Industry* (1,400 fewer). In the rest of the sectors the drops were more pronounced. There were 59,500 fewer employed persons in *Construction* this quarter, 52,300 fewer in *Services* and 33,500 fewer in *Agriculture*.

The number of wage earners decreased by 113,100. Those with a permanent contract decreased by 160,600, while the number of wage earners with temporary contracts increased 47,600. The temporary employment rate stood at 26.03%, that is, half-a-point more than the rate from the previous quarter.

Part-time employment decreased by 189,500 persons this quarter, whilst full-time employed persons increased by 42,700. The percentage of persons working part-time decreased 93 hundredths, reaching 13.21%.

The interannual variation of employment was -2.11%, that is, more than one point below that recorded the previous quarter. Employment experienced a decrease of 390,500 persons in one year, 277,000 of whom were wage earners, and 116,400 of whom were self-employed workers.

The interannual decrease in employment among men (342,100 fewer employed men) was much greater than the decrease in employment among women (48,400).

## **Unemployment and unemployment rate**

Unemployment increased by 144,700 persons this quarter, standing at 4,978,300. In the last 12 months, the total figure for unemployed persons increased by 403,600.

The unemployment rate rose six tenths, as compared with the second quarter of the year, reaching 21.52%.

The increase in unemployment was reflected to a greater extent in women (78,800 more unemployed women) than in men (65,800 more).

The male unemployment rate increased 46 hundredths, reaching 21.04%, whilst the female rate increased 83 hundredths, reaching 22.10%. Despite the fact that the difference between the two rates increased this quarter, the composition of unemployment observed since the year 2008 remained, with relatively little distance between the male and female rates, and a greater number of unemployed men than unemployed women.

By nationality, the increase in unemployment was concentrated in Spaniards (129,600 more unemployed Spaniards, against 15,000 more unemployed foreign nationals). The unemployment rate for the foreign population reached 32.72%, and was more than 13 points higher than that of persons with Spanish nationality.

Unemployment decreased in *Industry* (23,400 fewer unemployed persons). In contrast, unemployment rose in *Services* (45,900 more), *Construction* (26,000) and *Agriculture* (7,400). Unemployment also increased among persons who lost their jobs more than one year ago (by 40,700) and among those seeking their first job (by 48,000).

### **Mobility as related to economic activity**

The percentage of employed persons who were inactive in the previous quarter is now 2.71, bigger than that recorded in the second quarter.

The proportion of unemployed persons who were employed three months ago increased 1.84 points. The percentage of unemployed persons for the third quarter of the year who were already unemployed three months prior decreased 3.14 points, reaching 63.41%. The percentage of unemployed persons who were inactive three months ago increased 1.31 points.

### **Households**

The number of households in which all active members were unemployed experienced an increase of 57,700 in the third quarter of 2011, standing at 1,425,200. In parallel, the number of households in which all of the active members were employed decreased by 102,700, reaching 9,058,300.

In an interannual comparison, the number of households in which all active persons were unemployed increased by 132,900, and the number of those in which all active members were employed decreased by 201,700.

### **Results by Autonomous Community**

The incorporation of economically active persons in the labour market was especially significant this quarter in Illes Balears (22,600) and Andalucía (18,000). In contrast, in Comunidad de Madrid a decrease of 42,900 was observed in the number of active persons.

In the last 12 months, the number of active persons has grown by 30,200 persons in Canarias, by 29,400 in Andalucía and by 22,400 in Castilla-La Mancha, while it decreased by 25,000 in Comunidad de Madrid and Cataluña.

The greatest increases in employment for this quarter were in Illes Balears (28,500 more) and Castilla y León (11,200). The most pronounced drops were recorded in Comunidad de Madrid (71,000 fewer employed persons), Cataluña (58,900), Andalucía (36,100) and Comunitat Valenciana (30,100).

Canarias presented the greatest positive variation in employment in the last 12 months (11,800 more employed persons). The most pronounced drops were produced in Cataluña (99,500 fewer), Comunidad de Madrid (74,700) and Andalucía (74,000 fewer employments).

Regarding unemployment, the Autonomous Communities that presented the greatest quarterly decreases were Aragón (with 8,500 fewer unemployed persons), Castilla-La Mancha (6,300) and Illes Balears (5,900). The greatest increases in unemployment this quarter were in Andalucía (54,100 more unemployed persons), Cataluña (51,100), Comunidad de Madrid (28,100) and Comunitat Valenciana (26,100).

In the last 12 months, unemployment increased in all Autonomous Communities except Comunidad Foral de Navarra. The greatest interannual increases in unemployment were observed in Andalucía (103,400 more unemployed persons) and Cataluña (72,600).

País Vasco and Comunidad Foral de Navarra had unemployment rates under 13%. At the opposite end of the spectrum, Canarias and Andalucía presented rates above 29%.

The economic activity rates fluctuated this quarter between the 67.95% recorded in Illes Balears, and the 51.72% registered in Principado de Asturias.

## Results by province

The provincial results summary of the EAPS may be accessed via the following link:

[http://www.ine.es/en/daco/daco42/daco4211/epapro0311\\_en.pdf](http://www.ine.es/en/daco/daco42/daco4211/epapro0311_en.pdf)

All of the provincial information from this survey may be accessed via the following links:

- In the INEbase database  
<http://www.ine.es/jaxiBD/menu.do?L=1&divi=EPA&his=0&type=db>
- In the TEMPUS database  
<http://www.ine.es/GSTConsul/arbolAction.do?divi=EPA>

---

For further information see [INEbase-www.ine.es/en/welcome\\_en.htm](http://www.ine.es/en/welcome_en.htm) All press releases at: [www.ine.es/en/prensa/prensa\\_en.htm](http://www.ine.es/en/prensa/prensa_en.htm)

**Press Office:** Telephone numbers: 91 583 93 63 / 94 08 – Fax: 91 583 90 87 - [gprensa@ine.es](mailto:gprensa@ine.es)

**Information Area:** Telephone number: 91 583 91 00 – Fax: 91 583 91 58 – [www.ine.es/infoine/?L=1](http://www.ine.es/infoine/?L=1)

---

## Methodological note

### General features

The Economically Active Population Survey (EAPS) is a continuous sample-based study aimed at family dwellings, and which has been conducted since 1964.

The additional sample collected by the *Galician Statistics Institute* (IGE) has been incorporated as of the third quarter of 2009, using the same fieldwork system and identical methodology to that of the INE. Therefore, apart from the 3,588 census sections that have made up the sample for the whole of Spain since 2005, we must take into account the 234 additional sections in the Autonomous Community of Galicia. Since the third quarter of 2009, the EAPS sample is made up of 3,822 census sections from the more than 30,000 census sections into which Spain is divided. An average of 18 households are surveyed in each one, except in the provinces of Barcelona, Madrid, Sevilla, Valencia and Zaragoza, where the number of households surveyed is 22. Thus, the sample size is approximately 65,000 dwellings, providing information on some 180,000 persons. The data is collected via personal and telephone interviews. The information is carefully filtered and computer-processed. Results are obtained within the month following the end of the reference quarter for the data.

As of the first quarter of 2011, occupation is encoded following the new 2011 National Classification of Occupations. A dual encoding of said variable has been carried out during the four quarters of 2010, with the old and the new classifications, from which, dual results have been published for that year (see the Detailed Results of the EAPS section, <http://www.ine.es/jaxiBD/menu.do?L=1&divi=EPA&his=1&type=db>). An equivalence matrix has also been calculated between the two classifications ([http://www.ine.es/jaxi/menu.do?type=pcaxis&path=/t22/e308\\_mnu&file=inebase&N=&L=1](http://www.ine.es/jaxi/menu.do?type=pcaxis&path=/t22/e308_mnu&file=inebase&N=&L=1), apartado Análisis y estudios), for the purpose of enabling the link in the employment series.

### Main definitions

**Active persons:** persons aged 16 years old and over who, during the reference week (the week prior to that when the interview is held), supplied labour for the production of goods and services, or were available to do so and in conditions to incorporate themselves into said production. They are divided into employed and unemployed persons.

**Employed persons:** persons aged 16 years old and over who, during the reference week, worked for at least one hour in exchange for payment (salary, wage, business benefit, etc.) in cash or in kind. Persons who, being employed, had been temporarily absent from their job due to illness, holidays, etc., are also considered employed persons.

Employed persons are classified, considering their professional status, as non-wage earners (employers, businesspersons without wage earners and independent workers, cooperative members, family assistance) and wage earners (public or private).

Considering the length of the working day, employed persons are classified as full-time and part-time employed persons. The usual working week may not be shorter than 30 hours in the first case, nor exceed 35 hours in the second.

Wage earners are classified as permanent and temporary. For the latter, the end of their contract or work relationship is set by means of objective conditions, such as the expiry of a certain period of time, the completion of a specific task, etc.

A significant category within employment is that of **time-related underemployment**, defined in the 16th International Labour Statisticians Conference (Geneva, 1998). The EAPS considers persons suffering time-related underemployment as employed persons who would like to work more hours, who are available to work more hours and whose effective working hours in the reference week are less than the number of hours usually worked by employed persons working full-time in the same branch of activity as that in which the underemployed person develops his/her main job.

**Unemployed persons:** persons aged 16 years old and over who, during the reference week, were jobless, available for work, and actively looking for a job. Persons who might have already found a job and are waiting to start are also considered to be unemployed, provided that they meet the first two conditions.

According to European Commission Regulation 1897/2000, the following are considered to be active search methods, in the four weeks prior to the interview:

- Being in contact with a public employment office for the purpose of finding work, whatever part they play in the initiative (the renewal of registration due to purely administrative reasons does not constitute active planning).
- Being in contact with a private office (temporary employment agency, specialised hiring agency, etc.) with the objective of finding work.
- Having sent an application directly to employers.
- Having searched via personal relations and trade unions, etc.
- Having advertised oneself or responded to newspaper advertisements.
- Having studied job vacancies.
- Having taken part in a test, public exam or interview in the framework of a contracting procedure.
- Having looked for land, premises or material.
- Having taken steps to obtain permits, licences or financial resources.

**Inactive population:** persons aged 16 years old and over not included in any of the above categories.

## Economically Active Population Survey Third Quarter 2011

### National results

(Continues)

|  | Current quarter | Variation on previous quarter |            | Variation on same quarter, previous year |            |  |
|--|-----------------|-------------------------------|------------|--|------------|--|
|  |                 | Difference                    | Percentage | Difference                               | Percentage |  |
| <b>1. Population aged 16 years and over by sex and labour status</b> |                 |                               |            |  |            |  |
| <b>BOTH SEXES</b>  |                 |                               |            |  |            |  |
| <b>Population aged 16 years and over</b>                             | 38,487.8        | 6.6                           | 0.02       | 2.3                                      | 0.01       |  |
| Active population  | 23,134.6        | -2.1                          | -0.01      | 13.1                                     | 0.06       |  |
| - Employed   | 18,156.3        | -146.8                        | -0.80      | -390.5                                   | -2.11      |  |
| - Unemployed   | 4,978.3         | 144.7                         | 2.99       | 403.6                                    | 8.82       |  |
| Inactive   | 15,353.2        | 8.7                           | 0.06       | -10.8                                    | -0.07      |  |
| Activity rate  | 60.11           | -0.02                         | -          | 0.03                                     | -          |  |
| Unemployment rate  | 21.52           | 0.63                          | -          | 1.73                                     | -          |  |
| <b>Population aged 16 to 64 years</b>                                | 30,679.3        | -30.7                         | -0.10      | -138.6                                   | -0.45      |  |
| Activity rate (16-64)  | 74.92           | 0.07                          | -          | 0.40                                     | -          |  |
| Unemployment rate (16-64)  | 21.65           | 0.63                          | -          | 1.75                                     | -          |  |
| Employment rate (16-64)  | 58.70           | -0.42                         | -          | -0.99                                    | -          |  |
| <b>MALES</b>   |                 |                               |            |  |            |  |
| <b>Population aged 16 years and over</b>                             | 18,788.3        | -6.4                          | -0.03      | -39.5                                    | -0.21      |  |
| Active population  | 12,708.0        | 33.0                          | 0.26       | -148.3                                   | -1.15      |  |
| - Employed   | 10,034.0        | -32.8                         | -0.33      | -342.1                                   | -3.30      |  |
| - Unemployed   | 2,674.0         | 65.8                          | 2.52       | 193.8                                    | 7.81       |  |
| Inactive   | 6,080.3         | -39.5                         | -0.64      | 108.8                                    | 1.82       |  |
| Activity rate  | 67.64           | 0.20                          | -          | -0.65                                    | -          |  |
| Unemployment rate  | 21.04           | 0.46                          | -          | 1.75                                     | -          |  |
| <b>Population aged 16 to 64 years</b>                                | 15,435.5        | -23.9                         | -0.15      | -105.1                                   | -0.68      |  |
| Activity rate (16-64)  | 81.79           | 0.34                          | -          | -0.36                                    | -          |  |
| Unemployment rate (16-64)  | 21.17           | 0.47                          | -          | 1.77                                     | -          |  |
| Employment rate (16-64)  | 64.47           | -0.11                         | -          | -1.73                                    | -          |  |
| <b>FEMALES</b>   |                 |                               |            |  |            |  |
| <b>Population aged 16 years and over</b>                             | 19,699.4        | 13.0                          | 0.07       | 41.8                                     | 0.21       |  |
| Active population  | 10,426.6        | -35.2                         | -0.34      | 161.4                                    | 1.57       |  |
| - Employed   | 8,122.2         | -114.0                        | -1.38      | -48.4                                    | -0.59      |  |
| - Unemployed   | 2,304.4         | 78.8                          | 3.54       | 209.8                                    | 10.02      |  |
| Inactive   | 9,272.8         | 48.2                          | 0.52       | -119.6                                   | -1.27      |  |
| Activity rate  | 52.93           | -0.21                         | -          | 0.71                                     | -          |  |
| Unemployment rate  | 22.10           | 0.83                          | -          | 1.70                                     | -          |  |
| <b>Population aged 16 to 64 years</b>                                | 15,243.7        | -6.9                          | -0.05      | -33.5                                    | -0.22      |  |
| Activity rate (16-64)  | 67.97           | -0.19                         | -          | 1.20                                     | -          |  |
| Unemployment rate (16-64)  | 22.23           | 0.84                          | -          | 1.71                                     | -          |  |
| Employment rate (16-64)  | 52.86           | -0.72                         | -          | -0.21                                    | -          |  |

### 2. Spanish population<sup>1</sup> aged 16 years and over by labour status

|  |          |       |       |        |       |
|--|----------|-------|-------|--------|-------|
| <b>SPANISH POPULATION AGED 16 YEARS AND OVER</b> | 33,838.0 | 17.6  | 0.05  | 109.5  | 0.32  |
| Active population                                | 19,606.8 | 45.0  | 0.23  | 159.8  | 0.82  |
| - Employed                                       | 15,782.7 | -84.6 | -0.53 | -168.1 | -1.05 |
| - Unemployed                                     | 3,824.1  | 129.6 | 3.51  | 327.8  | 9.38  |
| Inactive   | 14,231.2 | -27.5 | -0.19 | -50.2  | -0.35 |
| Activity rate                                    | 57.94    | 0.10  | -     | 0.29   | -     |
| Unemployment rate                                | 19.50    | 0.62  | -     | 1.53   | -     |

<sup>1</sup> including dual nationality

## National results

(Continuation)

|  | Current quarter | Variation on previous quarter |            | Variation on same quarter, previous year |            |
|--|-----------------|-------------------------------|------------|--|------------|
|  |                 | Difference                    | Percentage | Difference                               | Percentage |
| <b>3. Foreign population aged 16 years and over by labour status</b> |                 |                               |            |  |            |
| FOREIGN POPULATION AGED 16 YEARS AND OVER                            | 4,649.8         | -11.0                         | -0.24      | -107.2                                   | -2.25      |
| Active population  | 3,527.8         | -47.2                         | -1.32      | -146.7                                   | -3.99      |
| - Employed   | 2,373.5         | -62.2                         | -2.55      | -222.5                                   | -8.57      |
| - Unemployed   | 1,154.2         | 15.0                          | 1.32       | 75.8                                     | 7.03       |
| Inactive   | 1,122.0         | 36.2                          | 3.33       | 39.4                                     | 3.64       |
| Activity rate  | 75.87           | -0.83                         | -          | -1.37                                    | -          |
| Unemployment rate  | 32.72           | 0.85                          | -          | 3.37                                     | -          |

## 4. Employed by sex, age group and economic sector

|                       |          |        |       |        |        |
|-----------------------|----------|--------|-------|--------|--------|
| <b>BOTH SEXES</b>     | 18,156.3 | -146.8 | -0.80 | -390.5 | -2.11  |
| 16 to 19 years        | 154.2    | 23.2   | 17.75 | -7.8   | -4.83  |
| 20 to 24 years        | 930.2    | 25.4   | 2.80  | -160.6 | -14.73 |
| 25 to 29 years        | 1,968.2  | -40.1  | -1.99 | -162.9 | -7.64  |
| 30 to 34 years        | 2,708.2  | -47.5  | -1.72 | -146.6 | -5.14  |
| 35 to 39 years        | 2,860.5  | -49.4  | -1.70 | 17.4   | 0.61   |
| 40 to 44 years        | 2,637.7  | -9.0   | -0.34 | 4.5    | 0.17   |
| 45 to 49 years        | 2,411.1  | -37.5  | -1.53 | -34.4  | -1.41  |
| 50 to 54 years        | 2,057.0  | -8.7   | -0.42 | 23.4   | 1.15   |
| 55 and over           | 2,429.2  | -3.2   | -0.13 | 76.6   | 3.26   |
| <b>MALES</b>          | 10,034.0 | -32.8  | -0.33 | -342.1 | -3.30  |
| 16 to 19 years        | 85.7     | 16.2   | 23.28 | -10.3  | -10.76 |
| 20 to 24 years        | 474.1    | 18.4   | 4.03  | -93.3  | -16.44 |
| 25 to 29 years        | 1,021.5  | -19.1  | -1.83 | -85.4  | -7.72  |
| 30 to 34 years        | 1,463.2  | -21.3  | -1.44 | -101.8 | -6.50  |
| 35 to 39 years        | 1,595.0  | -11.9  | -0.74 | -10.6  | -0.66  |
| 40 to 44 years        | 1,477.4  | -4.2   | -0.28 | -6.2   | -0.42  |
| 45 to 49 years        | 1,345.3  | -5.5   | -0.40 | -25.3  | -1.84  |
| 50 to 54 years        | 1,160.6  | 6.5    | 0.57  | 7.6    | 0.66   |
| 55 and over           | 1,411.3  | -12.0  | -0.84 | -16.9  | -1.18  |
| <b>FEMALES</b>        | 8,122.2  | -114.0 | -1.38 | -48.4  | -0.59  |
| 16 to 19 years        | 68.5     | 7.1    | 11.48 | 2.5    | 3.82   |
| 20 to 24 years        | 456.1    | 7.0    | 1.56  | -67.4  | -12.87 |
| 25 to 29 years        | 946.7    | -21.0  | -2.17 | -77.5  | -7.57  |
| 30 to 34 years        | 1,245.1  | -26.2  | -2.06 | -44.8  | -3.48  |
| 35 to 39 years        | 1,265.4  | -37.6  | -2.88 | 28.0   | 2.26   |
| 40 to 44 years        | 1,160.3  | -4.8   | -0.42 | 10.7   | 0.93   |
| 45 to 49 years        | 1,065.8  | -32.1  | -2.92 | -9.2   | -0.85  |
| 50 to 54 years        | 896.4    | -15.2  | -1.67 | 15.8   | 1.79   |
| 55 and over           | 1,017.9  | 8.8    | 0.88  | 93.5   | 10.12  |
| <b>TOTAL EMPLOYED</b> | 18,156.3 | -146.8 | -0.80 | -390.5 | -2.11  |
| Agriculture           | 707.7    | -33.5  | -4.53 | -46.3  | -6.14  |
| Industry              | 2,576.3  | -1.4   | -0.05 | -24.3  | -0.93  |
| Construction          | 1,370.7  | -59.5  | -4.16 | -297.3 | -17.83 |
| Services              | 13,501.5 | -52.3  | -0.39 | -22.6  | -0.17  |



**National results**

(Continuation)

|   | Current quarter | Variation on previous quarter |            | Variation on same quarter, previous year |            |
|---|-----------------|-------------------------------|------------|--|------------|
|   |                 | Difference                    | Percentage | Difference                               | Percentage |
| <b>5. Employed by professional status, type of contract and working hours</b> |                 |                               |            |  |            |
| TOTAL EMPLOYED  | 18,156.3        | -146.8                        | -0.80      | -390.5                                   | -2.11      |
| Self-employed workers   | 2,969.0         | -33.2                         | -1.11      | -116.4                                   | -3.77      |
| - Employers   | 935.5           | -17.2                         | -1.80      | -72.5                                    | -7.19      |
| - Independent workers   | 1,878.4         | 7.5                           | 0.40       | -18.3                                    | -0.97      |
| - Cooperatives members  | 31.3            | -3.4                          | -9.87      | 0.5                                      | 1.72       |
| - Family workers  | 123.7           | -20.1                         | -14.00     | -26.1                                    | -17.45     |
| Employees   | 15,179.4        | -113.1                        | -0.74      | -277.0                                   | -1.79      |
| - With a permanent job  | 11,228.9        | -160.6                        | -1.41      | -277.5                                   | -2.41      |
| - With a temporary job  | 3,950.4         | 47.6                          | 1.22       | 0.6                                      | 0.01       |
| Others  | 7.9             | -0.5                          | -6.24      | 2.9                                      | 56.57      |
| FULL-TIME EMPLOYED  | 15,757.7        | 42.7                          | 0.27       | -417.1                                   | -2.58      |
| Males   | 9,454.4         | 3.6                           | 0.04       | -377.5                                   | -3.84      |
| Females   | 6,303.3         | 39.1                          | 0.62       | -39.6                                    | -0.62      |
| PART-TIME EMPLOYED  | 2,398.5         | -189.5                        | -7.32      | 26.6                                     | 1.12       |
| Males   | 579.6           | -36.4                         | -5.91      | 35.4                                     | 6.50       |
| Females   | 1,818.9         | -153.1                        | -7.76      | -8.8                                     | -0.48      |

**6. Unemployed by sex, age group, and economic sector**

|                                     |         |       |       |       |        |
|-------------------------------------|---------|-------|-------|-------|--------|
| BOTH SEXES                          | 4,978.3 | 144.7 | 2.99  | 403.6 | 8.82   |
| 16 to 19 years                      | 236.1   | 17.1  | 7.81  | -6.2  | -2.58  |
| 20 to 24 years                      | 681.8   | 14.2  | 2.13  | 63.4  | 10.25  |
| 25 to 54 years                      | 3,655.3 | 87.9  | 2.46  | 307.2 | 9.18   |
| 55 and over                         | 405.1   | 25.4  | 6.70  | 39.3  | 10.73  |
| MALES                               | 2,674.0 | 65.8  | 2.52  | 193.8 | 7.81   |
| 16 to 19 years                      | 135.4   | 11.5  | 9.26  | -1.7  | -1.27  |
| 20 to 24 years                      | 362.9   | -1.6  | -0.43 | 29.3  | 8.77   |
| 25 to 54 years                      | 1,937.3 | 48.8  | 2.58  | 157.0 | 8.82   |
| 55 and over                         | 238.4   | 7.1   | 3.09  | 9.3   | 4.07   |
| FEMALES                             | 2,304.4 | 78.8  | 3.54  | 209.8 | 10.02  |
| 16 to 19 years                      | 100.7   | 5.6   | 5.92  | -4.5  | -4.28  |
| 20 to 24 years                      | 318.9   | 15.8  | 5.21  | 34.1  | 11.98  |
| 25 to 54 years                      | 1,718.0 | 39.1  | 2.33  | 150.3 | 9.58   |
| 55 and over                         | 166.7   | 18.3  | 12.32 | 29.9  | 21.90  |
| TOTAL UNEMPLOYED                    | 4,978.3 | 144.7 | 2.99  | 403.6 | 8.82   |
| Agriculture                         | 252.0   | 7.4   | 3.02  | 19.7  | 8.50   |
| Industry                            | 217.8   | -23.4 | -9.70 | -27.4 | -11.19 |
| Construction                        | 455.5   | 26.0  | 6.06  | -5.6  | -1.22  |
| Services                            | 1,477.6 | 45.9  | 3.21  | 91.9  | 6.63   |
| Lost their job more than 1 year ago | 2,117.3 | 40.7  | 1.96  | 245.3 | 13.11  |
| First job seekers                   | 458.2   | 48.0  | 11.71 | 79.7  | 21.07  |

## National results

(Conclusion)

|  | Current quarter | Variation on previous quarter |            | Variation on same quarter, previous year |            |
|--|-----------------|-------------------------------|------------|--|------------|
|  |                 | Difference                    | Percentage | Difference                               | Percentage |

### 7. Unemployment rate by relationship with the reference person

|                   |       |       |   |       |   |
|-------------------|-------|-------|---|-------|---|
| TOTAL             | 21.52 | 0.63  | - | 1.73  | - |
| Reference person  | 17.92 | 0.91  | - | 1.81  | - |
| Spouse or partner | 17.55 | 0.15  | - | 0.77  | - |
| Child             | 35.41 | 0.53  | - | 3.74  | - |
| Other relatives   | 30.29 | -0.71 | - | 2.91  | - |
| Unrelated persons | 16.84 | 2.73  | - | -2.43 | - |

### 8. Household data

|  |          |        |       |        |       |
|--|----------|--------|-------|--------|-------|
| TOTAL HOUSEHOLDS                           | 17,371.5 | 42.0   | 0.24  | 171.8  | 1.00  |
| Households with at least one active member | 12,982.6 | -8.2   | -0.06 | 57.6   | 0.45  |
| - All member employed                      | 9,058.3  | -102.7 | -1.12 | -201.7 | -2.18 |
| - All member unemployed                    | 1,425.2  | 57.7   | 4.22  | 132.9  | 10.28 |
| Households without any active population   | 4,388.9  | 50.2   | 1.16  | 114.2  | 2.67  |

### Mobility according to activity in current and previous quarter

| Classification in previous quarter | Total  | Classification in current quarter |            |          |
|------------------------------------|--------|-----------------------------------|------------|----------|
|                                    |        | Employed                          | Unemployed | Inactive |
| <b>BOTH SEXES</b>                  |        |                                   |            |          |
| Total                              | 100.00 | 100.00                            | 100.00     | 100.00   |
| Employed                           | 47.21  | 92.23                             | 17.67      | 3.93     |
| Unemployed                         | 12.16  | 5.06                              | 63.41      | 4.56     |
| Inactive                           | 40.64  | 2.71                              | 18.93      | 91.51    |
| <b>MALES</b>                       |        |                                   |            |          |
| Total                              | 100.00 | 100.00                            | 100.00     | 100.00   |
| Employed                           | 53.50  | 92.94                             | 18.37      | 3.93     |
| Unemployed                         | 13.21  | 5.12                              | 66.97      | 4.35     |
| Inactive                           | 33.29  | 1.95                              | 14.66      | 91.72    |
| <b>FEMALES</b>                     |        |                                   |            |          |
| Total                              | 100.00 | 100.00                            | 100.00     | 100.00   |
| Employed                           | 41.23  | 91.35                             | 16.89      | 3.93     |
| Unemployed                         | 11.16  | 4.99                              | 59.47      | 4.70     |
| Inactive                           | 47.61  | 3.66                              | 23.64      | 91.37    |

Grossing up factors of current quarter (forward analysis)

## Results by Autonomous Communities

(Continues)

|   | Current quarter | Variation on previous quarter |            | Variation on same quarter, previous year |            |
|---|-----------------|-------------------------------|------------|--|------------|
|   |                 | Difference                    | Percentage | Difference                               | Percentage |
| <b>1. Population aged 16 years and over</b> |                 |                               |            |  |            |
| TOTAL                                       | 38,487.8        | 6.6                           | 0.02       | 2.3                                      | 0.01       |
| Andalucía                                   | 6,788.0         | 6.2                           | 0.09       | 23.2                                     | 0.34       |
| Aragón                                      | 1,110.6         | 0.3                           | 0.03       | 0.4                                      | 0.03       |
| Asturias, Principado de                     | 926.1           | -1.4                          | -0.15      | -4.5                                     | -0.48      |
| Balears, Illes                              | 905.9           | 3.9                           | 0.43       | 9.7                                      | 1.08       |
| Canarias                                    | 1,759.9         | 3.7                           | 0.21       | 14.7                                     | 0.84       |
| Cantabria                                   | 493.9           | 0.3                           | 0.06       | -1.3                                     | -0.25      |
| Castilla y León                             | 2,137.1         | -2.2                          | -0.10      | -10.9                                    | -0.51      |
| Castilla-La Mancha                          | 1,704.1         | 1.1                           | 0.07       | 3.4                                      | 0.20       |
| Cataluña                                    | 6,034.9         | -17.4                         | -0.29      | -43.2                                    | -0.71      |
| Comunitat Valenciana                        | 4,168.3         | -1.0                          | -0.02      | 2.5                                      | 0.06       |
| Extremadura                                 | 908.1           | 0.3                           | 0.04       | 1.6                                      | 0.18       |
| Galicia                                     | 2,376.6         | -0.9                          | -0.04      | -6.6                                     | -0.28      |
| Madrid, Comunidad de                        | 5,278.0         | 10.6                          | 0.20       | 17.1                                     | 0.33       |
| Murcia, Región de                           | 1,192.7         | 2.6                           | 0.22       | 5.3                                      | 0.45       |
| Navarra, Comunidad Foral de                 | 513.8           | 0.2                           | 0.05       | 0.7                                      | 0.15       |
| País Vasco                                  | 1,811.6         | 0.4                           | 0.02       | -9.0                                     | -0.50      |
| Rioja, La                                   | 261.1           | -0.9                          | -0.34      | -2.7                                     | -1.01      |
| Ceuta                                       | 60.2            | 0.2                           | 0.34       | 0.9                                      | 1.47       |
| Melilla                                     | 56.7            | 0.4                           | 0.75       | 0.9                                      | 1.58       |

## 2. Active population

|                             |          |       |       |       |       |
|-----------------------------|----------|-------|-------|-------|-------|
| TOTAL                       | 23,134.6 | -2.1  | -0.01 | 13.1  | 0.06  |
| Andalucía                   | 3,985.7  | 18.0  | 0.45  | 29.4  | 0.74  |
| Aragón                      | 650.2    | -1.6  | -0.25 | 10.0  | 1.56  |
| Asturias, Principado de     | 479.0    | -5.4  | -1.11 | -3.3  | -0.69 |
| Balears, Illes              | 615.6    | 22.6  | 3.81  | 5.0   | 0.82  |
| Canarias                    | 1,112.3  | -2.4  | -0.22 | 30.2  | 2.79  |
| Cantabria                   | 281.6    | 4.7   | 1.70  | 6.9   | 2.53  |
| Castilla y León             | 1,193.8  | 9.8   | 0.83  | -1.3  | -0.11 |
| Castilla-La Mancha          | 1,000.3  | -2.6  | -0.26 | 22.4  | 2.29  |
| Cataluña                    | 3,818.6  | -7.8  | -0.20 | -27.0 | -0.70 |
| Comunitat Valenciana        | 2,496.6  | -4.0  | -0.16 | -19.4 | -0.77 |
| Extremadura                 | 487.6    | -8.6  | -1.73 | -9.0  | -1.81 |
| Galicia                     | 1,313.5  | 2.6   | 0.20  | -0.5  | -0.04 |
| Madrid, Comunidad de        | 3,368.8  | -42.9 | -1.26 | -47.3 | -1.38 |
| Murcia, Región de           | 737.5    | 3.2   | 0.44  | -2.7  | -0.37 |
| Navarra, Comunidad Foral de | 310.1    | 0.0   | 0.00  | 1.4   | 0.45  |
| País Vasco                  | 1,060.7  | 8.4   | 0.80  | 15.4  | 1.48  |
| Rioja, La                   | 159.1    | 3.8   | 2.42  | 0.0   | 0.00  |
| Ceuta                       | 32.2     | -1.0  | -2.96 | 0.3   | 0.89  |
| Melilla                     | 31.6     | 1.1   | 3.52  | 2.5   | 8.68  |

\* Data below 5000 are subject to strong variations, due to sampling error

## Results by Autonomous Communities

(Conclusion)

|                             | Current quarter | Variation on previous quarter |            | Variation on same quarter, previous year |            |
|-----------------------------|-----------------|-------------------------------|------------|--|------------|
|                             |                 | Difference                    | Percentage | Difference                               | Percentage |
| <b>3. Employed</b>          |                 |                               |            |  |            |
| TOTAL                       | 18,156.3        | -146.8                        | -0.80      | -390.5                                   | -2.11      |
| Andalucía                   | 2,752.7         | -36.1                         | -1.29      | -74.0                                    | -2.62      |
| Aragón                      | 545.1           | 6.8                           | 1.27       | -7.9                                     | -1.43      |
| Asturias, Principado de     | 396.8           | -4.5                          | -1.13      | -16.6                                    | -4.03      |
| Balears, Illes              | 505.9           | 28.5                          | 5.96       | -0.1                                     | -0.01      |
| Canarias                    | 783.6           | 0.7                           | 0.09       | 11.8                                     | 1.52       |
| Cantabria                   | 241.9           | 5.9                           | 2.50       | 0.7                                      | 0.29       |
| Castilla y León             | 1,001.8         | 11.2                          | 1.13       | -11.8                                    | -1.17      |
| Castilla-La Mancha          | 775.8           | 3.7                           | 0.48       | -9.5                                     | -1.21      |
| Cataluña                    | 3,076.6         | -58.9                         | -1.88      | -99.5                                    | -3.13      |
| Comunitat Valenciana        | 1,879.3         | -30.1                         | -1.58      | -47.8                                    | -2.48      |
| Extremadura                 | 372.5           | -8.9                          | -2.32      | -12.8                                    | -3.33      |
| Galicia                     | 1,087.0         | -4.4                          | -0.40      | -31.8                                    | -2.84      |
| Madrid, Comunidad de        | 2,795.7         | -71.0                         | -2.48      | -74.7                                    | -2.60      |
| Murcia, Región de           | 559.1           | 4.7                           | 0.85       | -3.8                                     | -0.68      |
| Navarra, Comunidad Foral de | 273.9           | 3.6                           | 1.33       | 3.7                                      | 1.36       |
| País Vasco                  | 931.6           | 1.7                           | 0.18       | -9.4                                     | -1.00      |
| Rioja, La                   | 131.4           | 1.7                           | 1.32       | -5.4                                     | -3.95      |
| Ceuta                       | 21.5            | -2.1                          | -9.04      | -3.2                                     | -13.10     |
| Melilla                     | 24.1            | 0.7                           | 2.99       | 1.8                                      | 8.05       |

## 4. Unemployed

|                             |         |       |       |       |       |
|-----------------------------|---------|-------|-------|-------|-------|
| TOTAL                       | 4,978.3 | 144.7 | 2.99  | 403.6 | 8.82  |
| Andalucía                   | 1,232.9 | 54.1  | 4.59  | 103.4 | 9.15  |
| Aragón                      | 105.1   | -8.5  | -7.47 | 17.9  | 20.54 |
| Asturias, Principado de     | 82.2    | -0.8  | -1.02 | 13.3  | 19.29 |
| Balears, Illes              | 109.6   | -5.9  | -5.11 | 5.1   | 4.87  |
| Canarias                    | 328.7   | -3.1  | -0.94 | 18.4  | 5.94  |
| Cantabria                   | 39.7    | -1.2  | -2.95 | 6.3   | 18.69 |
| Castilla y León             | 192.0   | -1.4  | -0.70 | 10.6  | 5.84  |
| Castilla-La Mancha          | 224.5   | -6.3  | -2.73 | 31.9  | 16.54 |
| Cataluña                    | 742.0   | 51.1  | 7.40  | 72.6  | 10.84 |
| Comunitat Valenciana        | 617.3   | 26.1  | 4.41  | 28.4  | 4.83  |
| Extremadura                 | 115.1   | 0.3   | 0.26  | 3.8   | 3.43  |
| Galicia                     | 226.5   | 7.0   | 3.18  | 31.3  | 16.01 |
| Madrid, Comunidad de        | 573.1   | 28.1  | 5.17  | 27.4  | 5.02  |
| Murcia, Región de           | 178.4   | -1.5  | -0.82 | 1.1   | 0.60  |
| Navarra, Comunidad Foral de | 36.2    | -3.6  | -9.05 | -2.3  | -5.90 |
| País Vasco                  | 129.1   | 6.7   | 5.51  | 24.9  | 23.85 |
| Rioja, La                   | 27.7    | 2.0   | 7.97  | 5.4   | 24.27 |
| Ceuta                       | 10.7    | 1.2   | 12.13 | 3.5   | (:)   |
| Melilla                     | 7.5     | 0.4   | 5.27  | 0.7   | 10.74 |

\* Data below 5,000 are subject to strong variations, due to sampling error

(:) The variation percentages calculated from low figures with high sampling errors are not significant

## Results by Autonomous Communities

(Absolute figures in thousands and rates in percentage)

### 5. Employed and unemployed by sex. Activity and unemployment rates

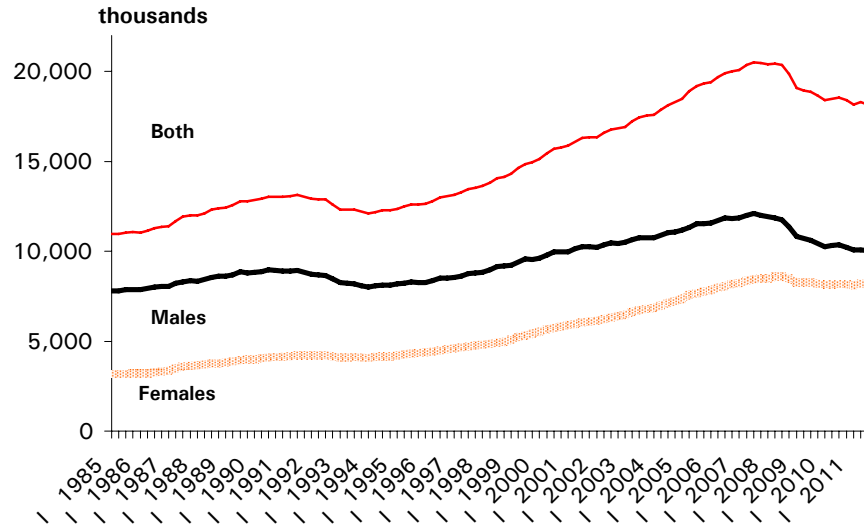
|                                 | Both sexes |            |               |            | Males    |            |               |            | Females  |            |               |            |
|---------------------------------|------------|------------|---------------|------------|----------|------------|---------------|------------|----------|------------|---------------|------------|
|                                 | Employed   | Unemployed | Activity rate | Unem. rate | Employed | Unemployed | Activity rate | Unem. Rate | Employed | Unemployed | Activity rate | Unem. Rate |
| <b>TOTAL</b>                    | 18,156.3   | 4,978.3    | 60.11         | 21.52      | 10,034.0 | 2,674.0    | 67.64         | 21.04      | 8,122.2  | 2,304.4    | 52.93         | 22.10      |
| <b>Andalucía</b>                | 2,752.7    | 1,232.9    | 58.72         | 30.93      | 1,584.6  | 658.5      | 67.29         | 29.36      | 1,168.2  | 574.4      | 50.45         | 32.96      |
| <b>Aragón</b>                   | 545.1      | 105.1      | 58.54         | 16.16      | 306.0    | 56.4       | 66.09         | 15.56      | 239.1    | 48.7       | 51.18         | 16.93      |
| <b>Asturias, Principado de</b>  | 396.8      | 82.2       | 51.72         | 17.17      | 210.9    | 45.8       | 58.51         | 17.83      | 185.9    | 36.5       | 45.61         | 16.40      |
| <b>Balears, Illes</b>           | 505.9      | 109.6      | 67.95         | 17.81      | 268.5    | 65.5       | 74.06         | 19.61      | 237.5    | 44.2       | 61.90         | 15.68      |
| <b>Canarias</b>                 | 783.6      | 328.7      | 63.20         | 29.55      | 433.7    | 178.6      | 70.25         | 29.16      | 349.9    | 150.1      | 56.28         | 30.02      |
| <b>Cantabria</b>                | 241.9      | 39.7       | 57.01         | 14.10      | 132.3    | 23.0       | 64.98         | 14.80      | 109.6    | 16.7       | 49.54         | 13.23      |
| <b>Castilla y León</b>          | 1,001.8    | 192.0      | 55.86         | 16.08      | 571.1    | 100.3      | 63.83         | 14.93      | 430.7    | 91.7       | 48.14         | 17.55      |
| <b>Castilla-La Mancha</b>       | 775.8      | 224.5      | 58.70         | 22.44      | 460.1    | 118.3      | 67.74         | 20.45      | 315.6    | 106.2      | 49.62         | 25.18      |
| <b>Cataluña</b>                 | 3,076.6    | 742.0      | 63.27         | 19.43      | 1,633.0  | 416.4      | 69.93         | 20.32      | 1,443.6  | 325.6      | 56.99         | 18.40      |
| <b>Comunitat Valenciana</b>     | 1,879.3    | 617.3      | 59.90         | 24.73      | 1,046.6  | 333.7      | 67.20         | 24.17      | 832.7    | 283.7      | 52.80         | 25.41      |
| <b>Extremadura</b>              | 372.5      | 115.1      | 53.69         | 23.60      | 221.0    | 61.6       | 63.11         | 21.80      | 151.5    | 53.5       | 44.53         | 26.09      |
| <b>Galicia</b>                  | 1,087.0    | 226.5      | 55.27         | 17.25      | 587.4    | 114.5      | 61.85         | 16.32      | 499.6    | 112.0      | 49.26         | 18.31      |
| <b>Madrid, Comunidad de</b>     | 2,795.7    | 573.1      | 63.83         | 17.01      | 1,498.3  | 291.7      | 71.02         | 16.29      | 1,297.4  | 281.4      | 57.26         | 17.82      |
| <b>Murcia, Región de</b>        | 559.1      | 178.4      | 61.83         | 24.19      | 325.4    | 101.6      | 71.12         | 23.79      | 233.7    | 76.8       | 52.42         | 24.74      |
| <b>Navarra, Comunidad Foral</b> | 273.9      | 36.2       | 60.35         | 11.68      | 150.5    | 19.1       | 66.88         | 11.25      | 123.3    | 17.2       | 53.98         | 12.22      |
| <b>País Vasco</b>               | 931.6      | 129.1      | 58.55         | 12.17      | 502.2    | 65.8       | 65.16         | 11.59      | 429.4    | 63.3       | 52.42         | 12.85      |
| <b>Rioja, La</b>                | 131.4      | 27.7       | 60.90         | 17.39      | 72.9     | 14.3       | 67.77         | 16.39      | 58.5     | 13.4       | 54.23         | 18.59      |
| <b>Ceuta</b>                    | 21.5       | 10.7       | 53.54         | 33.20      | 14.3     | 5.1        | 64.37         | 26.41      | 7.2      | 5.5        | 42.57         | 43.59      |
| <b>Melilla</b>                  | 24.1       | 7.5        | 55.75         | 23.81      | 15.1     | 3.9        | 68.35         | 20.55      | 9.0      | 3.6        | 43.60         | 28.74      |

\* Data below 5,000 are subject to strong variations, due to sampling errors

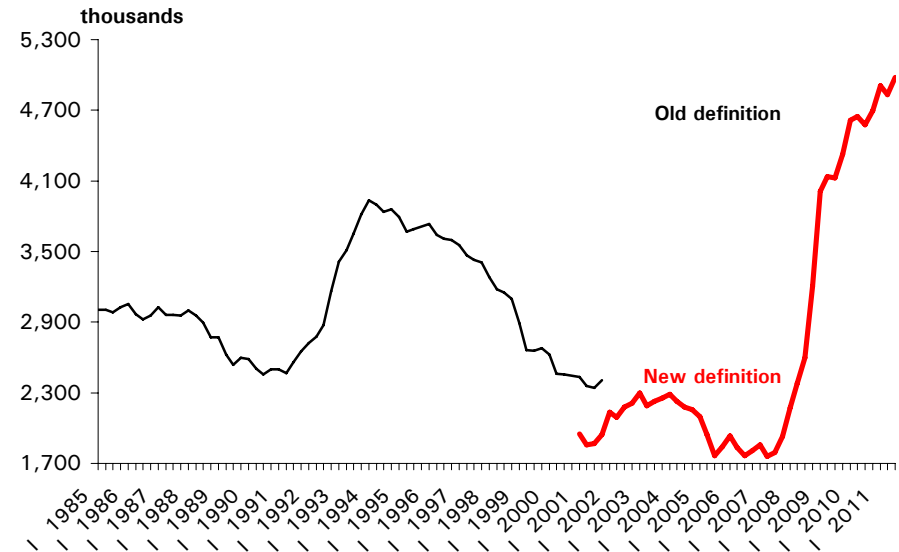
# Employed and unemployed by sex

APS Third Quarter 2011

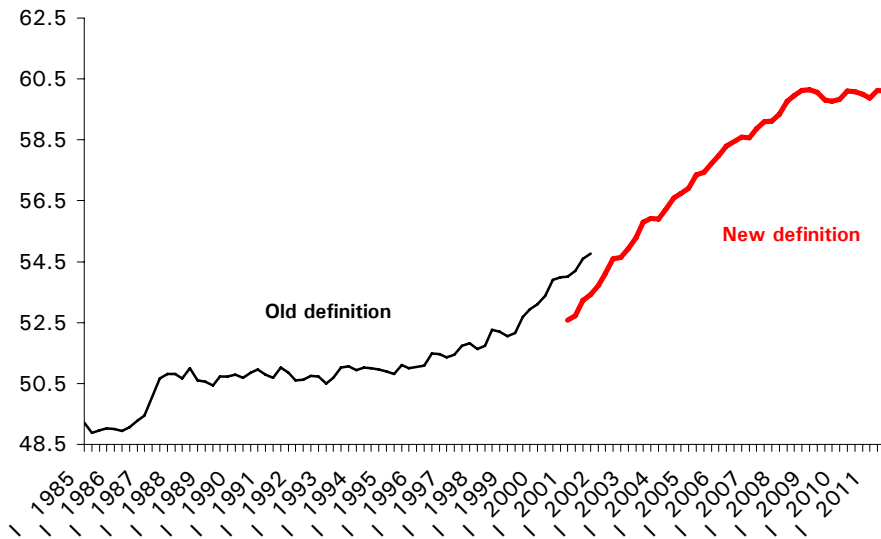
## Employment



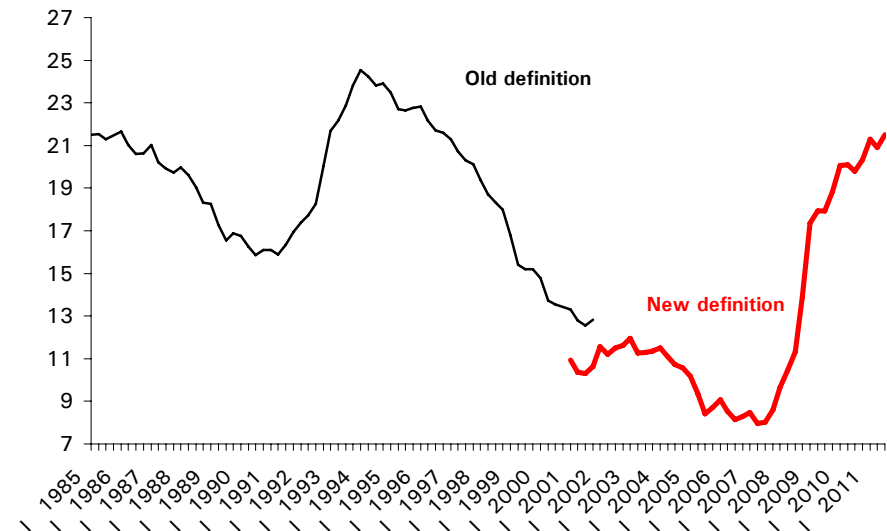
## Unemployment



## Activity rate



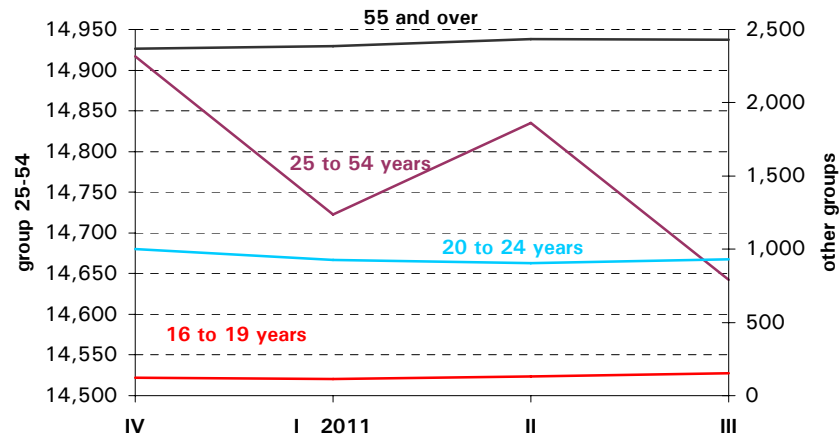
## Unemployment rate



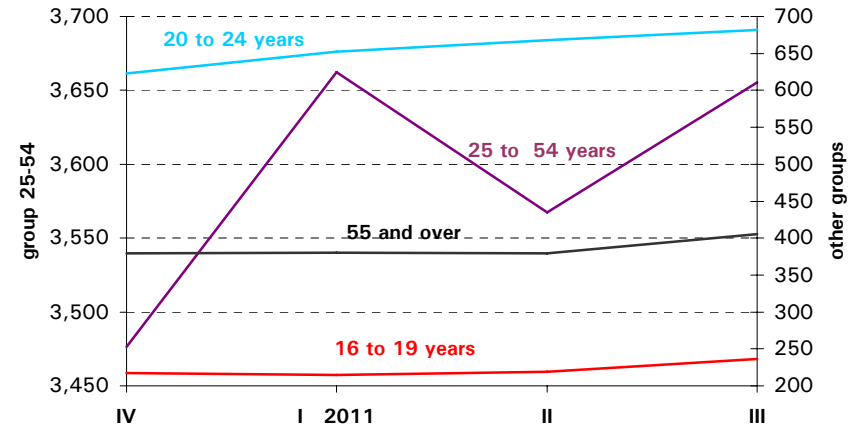
# Employed and Unemployed by age

APS Third Quarter 2011

Employment (thousands)

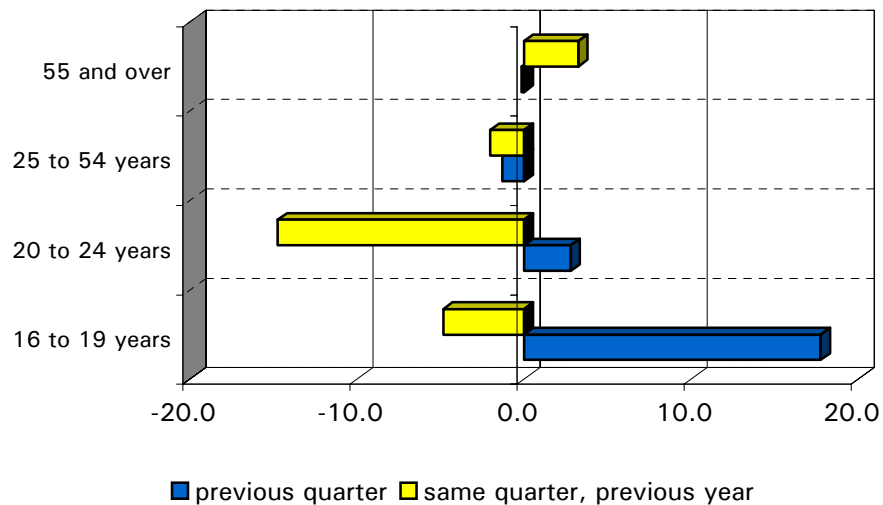


Unemployment (thousands)

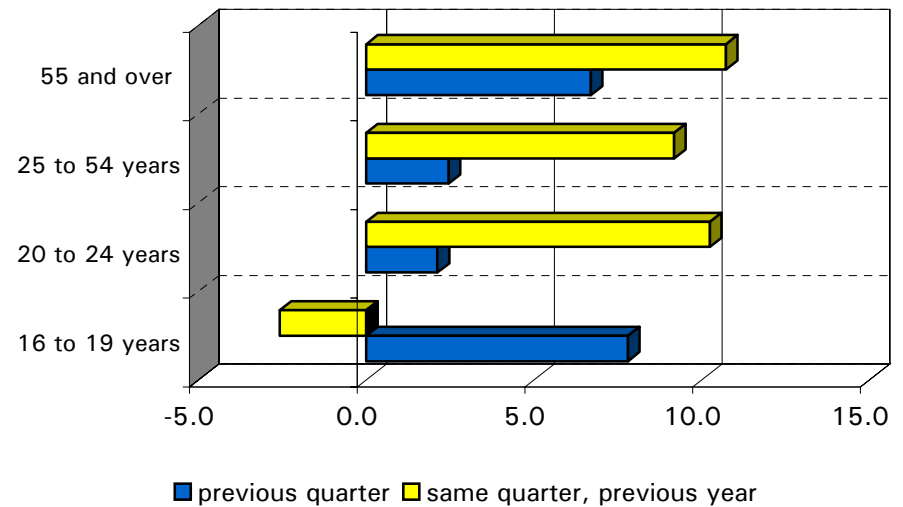


Variation percentages over the previous quarter and over the same quarter of the previous year

Employment

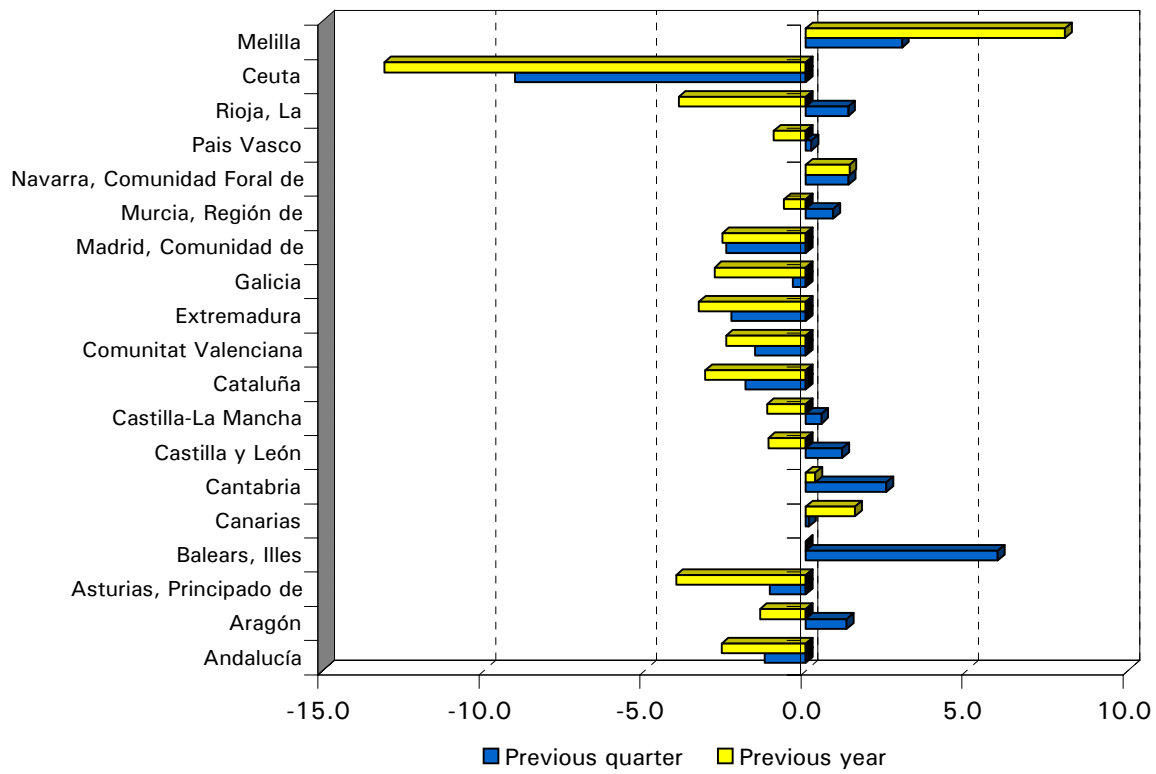


Unemployment



# Employment variation percentages over the previous quarter and over the same quarter of the previous year

Third Quarter 2011



## Unemployment rate (Spain = 21.52 )

