

25 October 2018

Economically Active Population Survey (EAPS) Third Quarter 2018

Main results

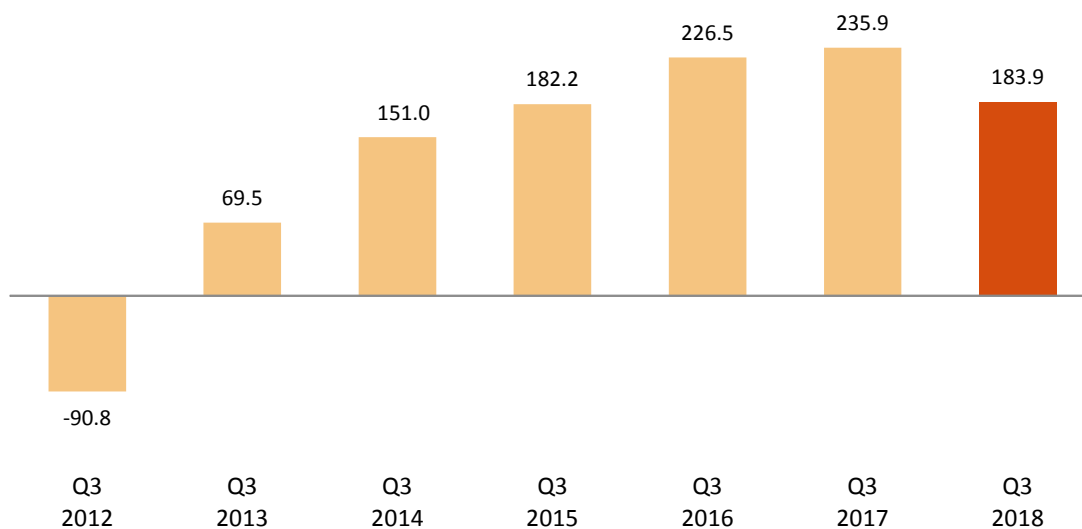
- Employment registered an increase of 183,900 persons in the third quarter of 2018 as compared with the previous quarter (0.95%), standing at 19,528,000 employed persons. The quarterly variation rate stood at 0.48% in non-seasonal terms. Employment has grown by 478,800 persons (2.51%) in the last 12 months.
- Employment increased this quarter by 49,700 people in the public sector and 134,200 in the private sector. In the last twelve months, employment has increased by 373,300 persons in the private sector and 105,500 in the public sector.
- Salaried employees increased this quarter by 176,300. Those with a temporary contracts increased by 151,000, while those with a permanent contract did so by 25,300. The number of salaried employees increased by 526,900 in the annual rate (permanent employment increased by 374,100 persons and temporary employment by 152,900). The number of self-employed workers increased by 7,200 this quarter and decreased by 49,700 in the last 12 months.
- Employment increased this quarter in *Services* (210,200 more), *Construction* (24,900) and *Industry* (2,800), and fell in *Agriculture* (54,000 less). In the last year in *Services* there were 346,800 more employed persons, in *Construction* 85,600 and in *Industry* 55,000. In turn, in *Agriculture* there were 8,600 fewer.
- The greatest increases in employment this quarter occurred in Illes Balears (47,500 more), Cataluña (33,500 more) and Canarias and Castilla-La Mancha (22,700 more each). In País Vasco, employment decreased by 7,200 people. Within the last year, the highest increases in the number of employed persons were observed in Andalucía (80,400 more), Cataluña (77,300) and Canarias (54,100). On the other hand, in Principado de Asturias, employment has dropped by 3,500 in the last 12 months.
- The number of unemployed persons decreased by 164,100 this quarter (-4.70%), standing at 3,326,000. In seasonally adjusted terms, the quarterly variation was -2.29%. Over the last 12 months, unemployment has decreased by 405,800 persons (-10.87%).
- The unemployment rate stood at 14.55%, which is 73 hundredths less than the previous quarter. Within the last year, this rate has decreased by 1.83 points.
- By Autonomous Community, the greatest quarterly drops in unemployment occurred in Cataluña (28,300 less unemployed persons), Illes Balears (-24,600) and Castilla-La Mancha (-23,800). In annual terms, the greatest decreases in the number of unemployed persons occurred in Andalucía (107,400 fewer), Cataluña (-72,000) and Comunitat Valenciana (-55,300).
- This quarter, the number of economically active persons increased by 19,800, up to 22,854,000. The activity rate decreased by seven hundredths standing at 58.73%. Over the last year, the economically active population has increased by 73,000 persons.

Employment

The number of employed persons increased by 183,900 persons in the third quarter of 2018 and stood at 19,528,000. The quarterly employment variation rate stood at 0.95%.

The employment rate (percentage of employed persons with respect to the population aged 16 and over) was 50.18%, representing an increase of 37 hundredths as compared to the previous quarter. In annual variation terms, this rate has risen by 91 hundredths.

Quarterly variation of employment. Thousands (Q3 compared with Q2 of the same year)



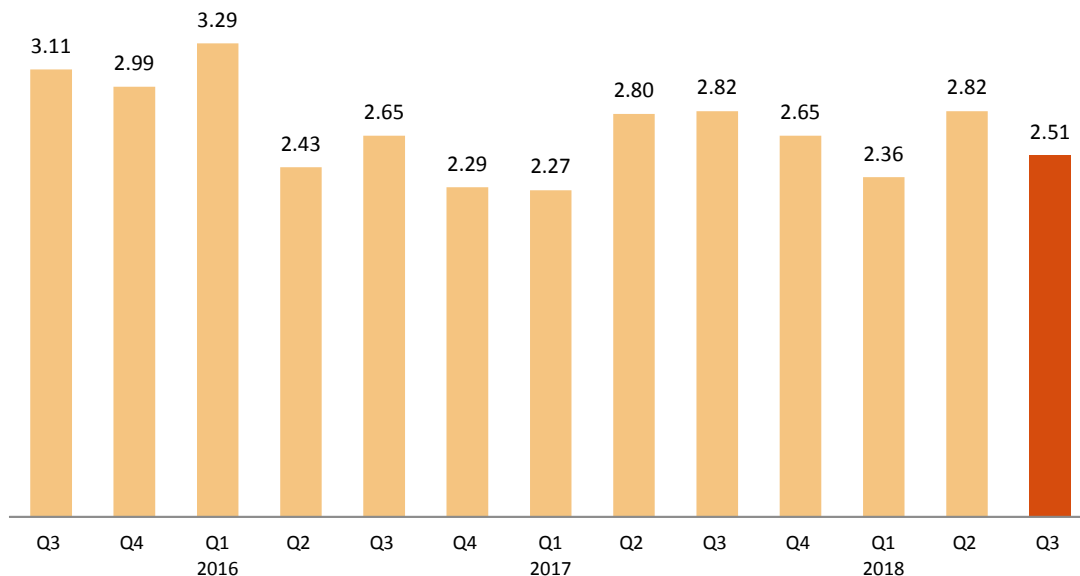
By sex, employment increased this quarter by 134,000 men and 49,900 women.

By nationality, employment increased by 154,300 persons among Spaniards and by 29,600 among foreign nationals.

By age, employment grew this quarter among those aged under 30 and those aged 40 and over (the greatest increase occurred in the age group 55 and over, with 70,200 more employed persons). In turn, employment dropped in the 35-39 age group (44,800 less) and in the 30-34 age group (-18,800).

In the past 12 months, employment has increased by 478,800 persons (241,900 men and 236,900 women). The annual variation rate of employment was 2.51%, representing a decrease of 31 hundredths compared to the previous quarter.

Annual variation rate of employment. Percentage.



Employment increased this quarter in *Services* (210,200 more employed persons), *Construction* (24,900) and *Industry* (2,800 more). In turn, it decreased in *Agriculture* (-54,000).

In the last year employment has risen in *Services* (346,800 more employed persons), *Construction* (85,600) and in *Industry* (55,000). In turn, in *Agriculture* there were 8,600 fewer employed persons than a year ago.

Full-time employment increased by 369,800 persons this quarter, whilst part-time employment decreased by 185,900. The percentage of persons employed part-time decreased by 1.09 percentage points, to 13.90%.

Over the last 12 months, full-time employment has increased by 490,800 persons and part-time employment has fallen by 12,000.

The number of salaried employees increased this quarter by 176,300. Those with a temporary contract increased by 151,000, while those with a permanent contract did so by 25,300. The temporary employment rate increased 63 hundredths, up to 27.43%.

Over the last 12 months, the number of salaried employees has increased by 526,900. Permanent employment increased by 374,100 persons and temporary employment did so by 152,900.

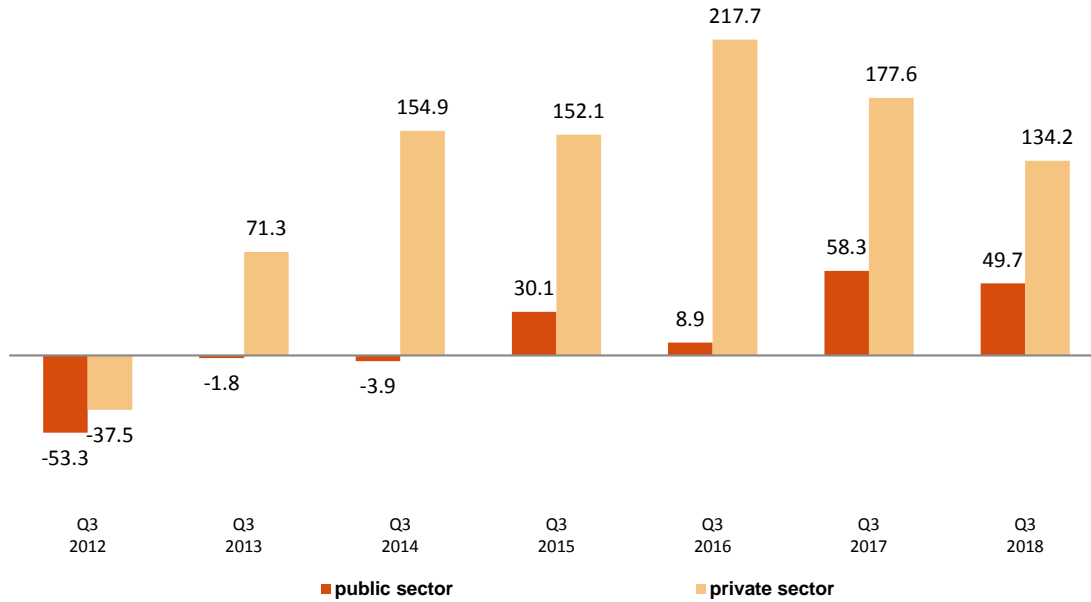
The number of self-employed persons increased by 7,200 persons in quarterly variation. However, it has dropped by 49,700 in the last year.

This quarter, private employment¹ increased by 134,200 persons, standing at 16,360,400. Public employment² increased by 49,700, up to 3,167,500.

¹ Employment in the private sector includes: private sector salaried employees, employers, self-employed workers and self-employed without employees, members of cooperatives, contributing family workers and other professional situations.

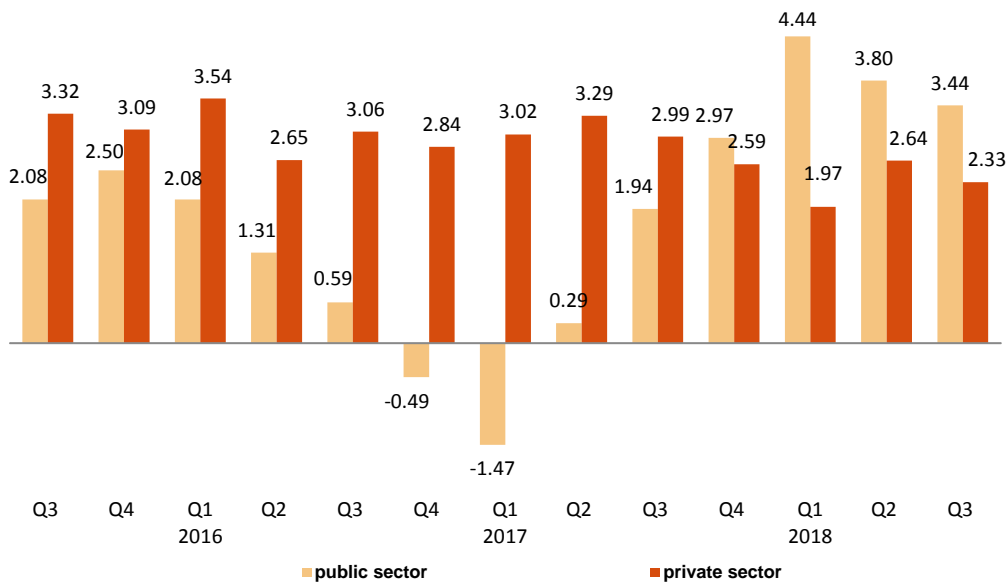
² Employment in the public sector includes all salaried employees of public companies and of the National and Regional Administrations, including both workers contributing to the General Social Security System and those affiliated to the Special Civil Service System.

Quarterly variation of employment by nature of employer. Thousands
(Q3 compared with Q2 of the same year)



Employment in the private sector showed an annual variation of 2.33%, while public employment of 3.44%. In the past twelve months, employment has increased by 373,300 persons in the private sector and by 105,500 in the public sector.

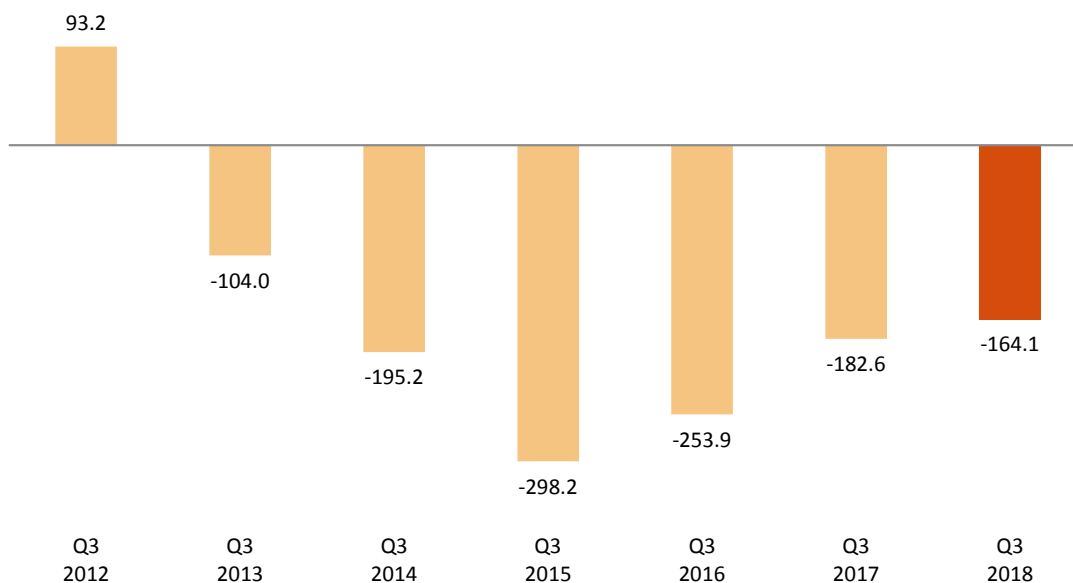
Annual variation rate of employment by nature of employer. Percentage.



Unemployment and unemployment rate

Unemployment decreased by 164,100 persons this quarter. The total number of unemployed persons stood at 3,326,000. In relative terms, the quarterly variation of unemployment was -4.70%.

Quarterly variation of unemployment. Thousands (Q3 compared with Q2 of the same year)



The unemployment rate decreased by 73 hundredths and stood at 14.55%. In the last 12 months, this rate has decreased by 1.83 points.

By sex, the number of unemployed men decreased by 64,300 this quarter, standing at 1,609,600. Among women, unemployment decreased by 99,800, reaching 1,716,400.

Female unemployment rate decreased by 86 hundredths and stood at 16.22%. The male rate did so by 60 hundredths and stood at 13.12%.

By age group, unemployment fell this quarter among those aged 25 to 54 (121,600 fewer unemployed persons), among those aged 55 and over (-48,600) and among young people aged 16 to 19 (-1,900). In turn, the number of unemployed persons increased by 8,000 among young people aged 20 to 24 years old.

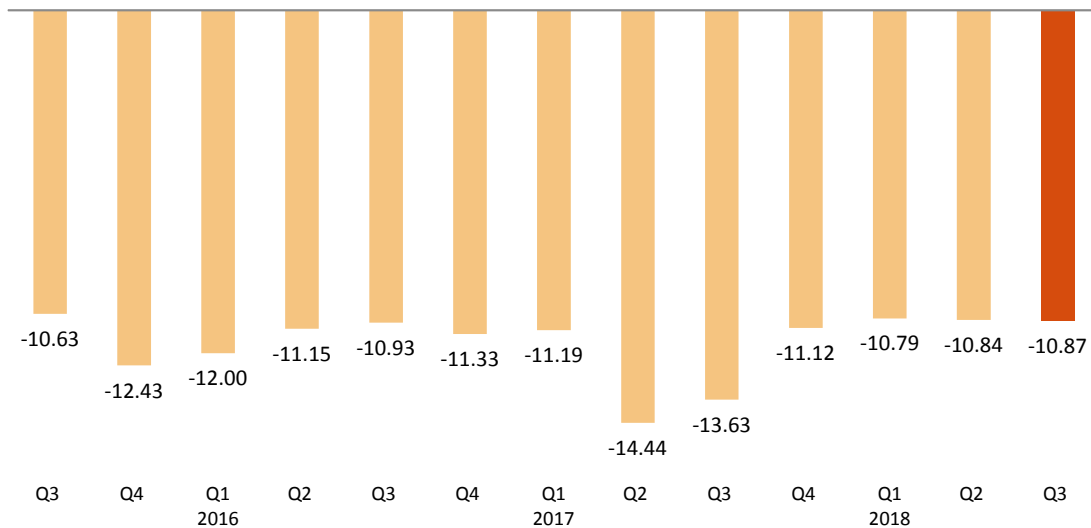
By nationality, unemployment decreased this quarter among Spaniards by 126,400 and among foreigners by 37,700. The unemployment rate of the Spanish population was 13.70%, while that of the foreign population was 20.64%.

This quarter, unemployment decreased in *Services* (58,600 less unemployed people) and *Industry* (-2,000). In turn, it increased in *Construction* by 9,300 and in *Agriculture* by 7,800.

Unemployment decreased by 129,300 persons among those who lost their job over a year ago and by 8,500 among those who are seeking their first job.

The evolution of unemployment in the annual rate was -10.87%. The total number of unemployed persons has decreased by 405,800 persons in one year, with a decrease of 201,100 for men and 204,700 for women.

Annual variation rate of unemployment. Percentage.



By age, the annual decrease of unemployment took place in all groups. The largest decrease was in the 25-54 age group (294,400 fewer unemployed persons).

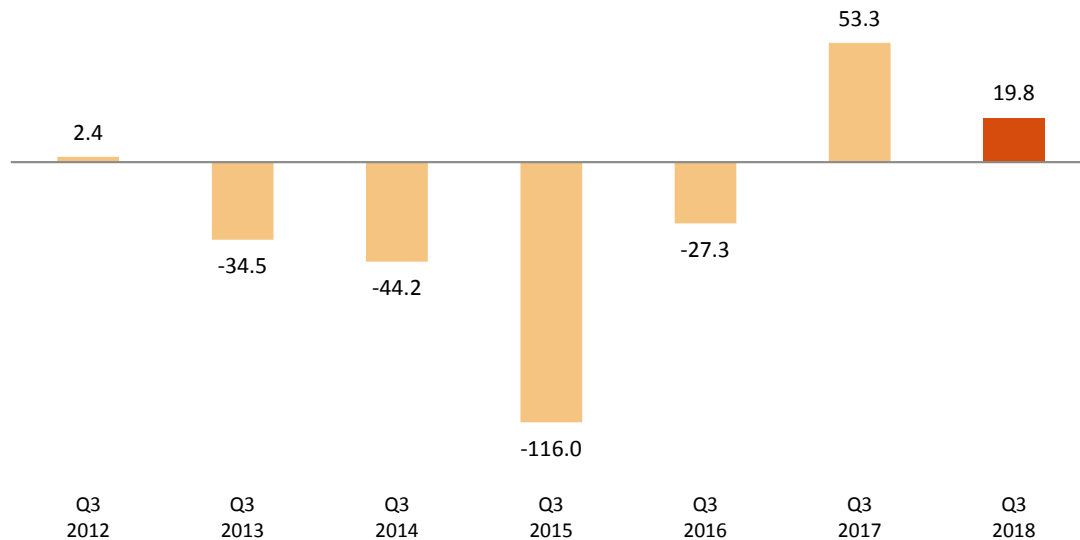
In the last 12 months unemployment has fallen in *Services* (76,600 fewer unemployed persons), *Agriculture* (-40,800) and *Construction* (-8,100). In turn, it has risen in *Industry* (5,800 more unemployed people in the last year). On the other hand, the number of unemployed persons who lost their jobs over a year ago has decreased by 230,100 and the number of unemployed persons looking for their first job by 56,000.

Economically active population and activity rate

The economically active population increased by 19,800 in the third quarter standing at 22,854,000. The number of economically active women decreased by 49,900, while that of men rose by 69,700.

By nationality, the number of economically active persons increased this quarter by 27,900 among Spaniards and decreased by 8,100 among foreign nationals.

Quarterly variation of activity. Thousands (Q3 compared with Q2 of the same year)



The activity rate fell by seven hundredths, to 58.73%. That of men rose 25 hundredths and stood at 64.86%. In turn, the female rate decreased 36 hundredths, to 52.93%.

The economic activity rate of Spaniards increased by five hundredths as compared with the previous quarter, standing at 57.34%. For foreigners it fell by 1.28 points to 71.02%. The difference of more than 13 points between both activity rates is mainly explained by the different age structures for both populations.

In annual terms, the economically active population has increased by 73,000 persons. The annual variation rate of economically active persons was 0.32%.

Annual variation rate of activity. Percentage.



Households

The number of households increased by 27,300 this quarter, standing at 18,589,500. Of these, 4,754,600 were single-person households.

Households in which all economically active members were unemployed decreased by 29,500 this quarter, reaching a total of 1,083,700. Of these, 271,400 were single-person households.

On the other hand, the number of households in which all of the economically active members were employed increased by 139,300, standing at 10,551,000. Of these, 1,906,700 were single-person households.

In annual comparison, the number of households with at least one economically active member in which those members were unemployed has decreased by 110,200, while those where all active members were employed has increased by 315,800.

Results by Autonomous Communities³

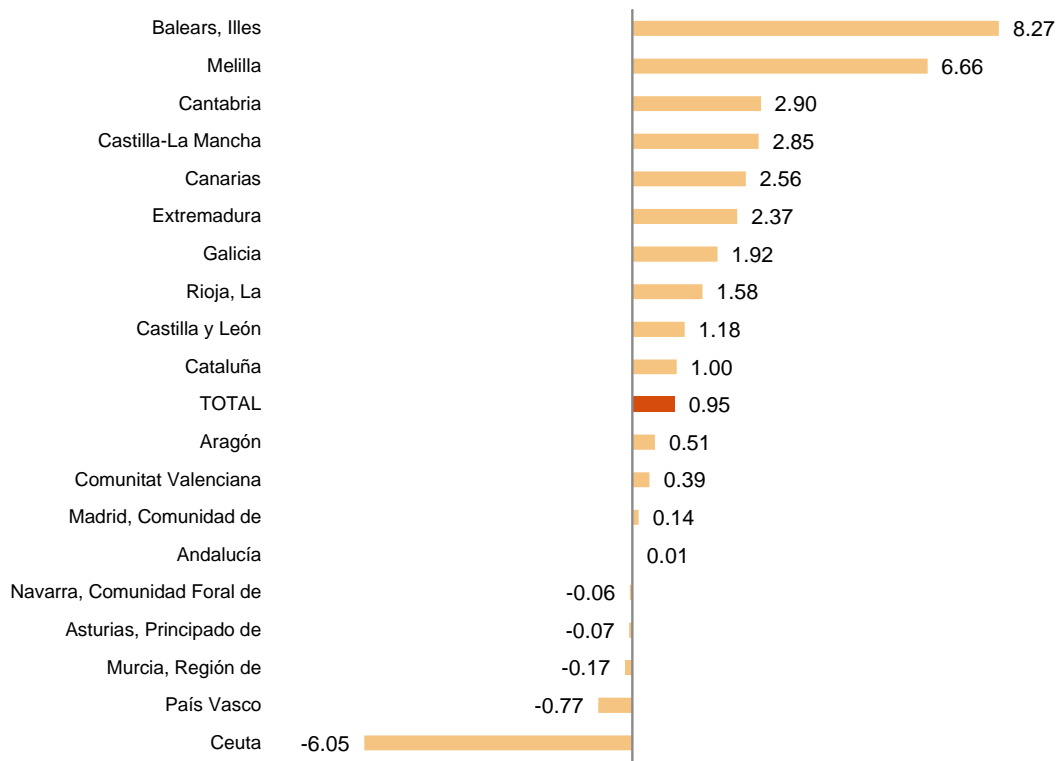
The greatest increases in employment this quarter occurred in Illes Balears (47,500 more), Cataluña (33,500 more) and Canarias and Castilla-La Mancha (22,700 more each).

In turn, the greatest decrease was recorded in País Vasco, (-7,200 people)

In relative terms, the Autonomous Communities with the highest quarterly employment increase were Illes Balears (8.27%), Cantabria (2.90%) and Castilla-La Mancha (2.85%).

³ As with the rest of the EAPS data, employment results in this section are presented according to the Autonomous Community of residence of those persons interviewed in the survey, and not according to where their work centre is.

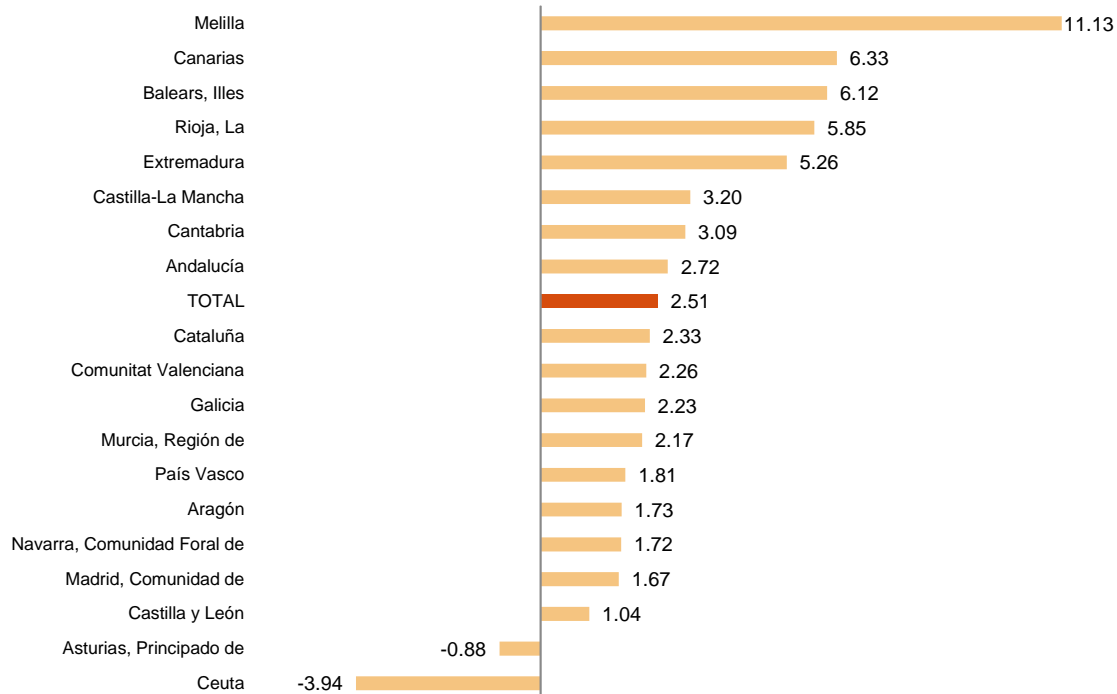
Quarterly variation rate of employment by autonomous community. Percentage.



Within the last year, the highest increases in the number of employed persons were observed in Andalucía (80,400 more), Cataluña (77,300) and Canarias (54,100). On the other hand, in Principado de Asturias, employment has dropped by 3,500 in the last 12 months.

In relative terms, the Autonomous Communities with the greatest annual employment increases were Canarias (6.33%), Illes Balears (6.12%) and La Rioja (5.85%). In turn, Principado de Asturias presented an annual variation in employment of -0.88%.

Annual variation rate of employment by autonomous community. Percentage.



The greatest quarterly unemployment decreases occurred in Cataluña (28,300 fewer unemployed people), Illes Balears (-24,600) and Castilla-La Mancha (-23,800).

In annual terms, the greatest decreases in the number of unemployed persons occurred in Andalucía (107,400 fewer), Cataluña (-72,000) and Comunitat Valenciana (-55,300).

Illes Balears (7.16%), Cantabria (8.99%) and País Vasco (9.42%) registered the lowest unemployment rates this quarter. At the other end of the scale, Andalucía (22.85%), Extremadura (21.68%) and Canarias (19.64%) showed the highest rates.

The greatest increases in the activity rate this quarter occurred in Illes Balears (22,900 more active), Canarias (22,500) and Cataluña (5,200). The greatest decreases were observed in País Vasco (15,900 fewer economically active people), Andalucía (-11,800) and Comunidad de Madrid (-3,600).

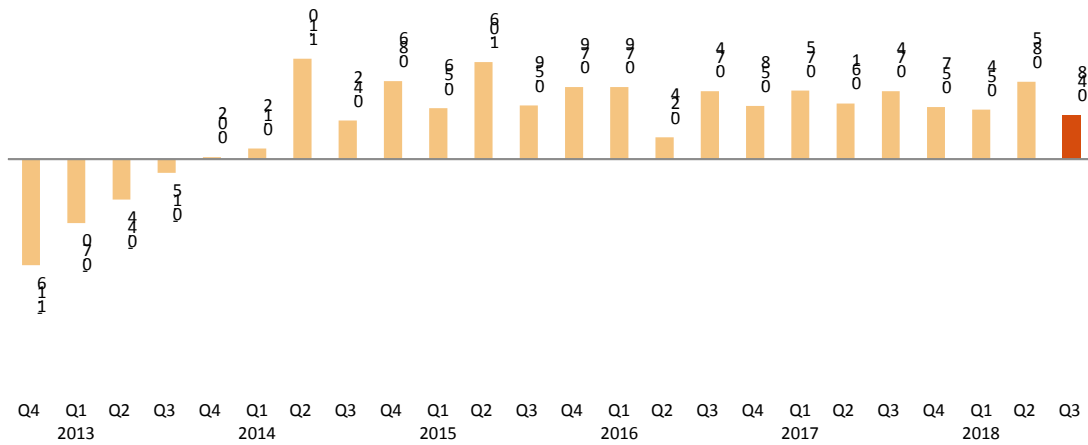
In the last 12 months, Canarias (37,100 more economically active people), Comunidad de Madrid (37,000) and Illes Balears (24,100) registered the greatest increases in the number of economically active persons. In turn, the greatest decreases occurred in Andalucía (-27,000), Castilla y León (-10,400) Comunitat Valenciana (-9,700).

This quarter, the activity rates fluctuated between 67.93% for Illes Balears and 51.06% for Principado de Asturias.

Seasonally adjusted series

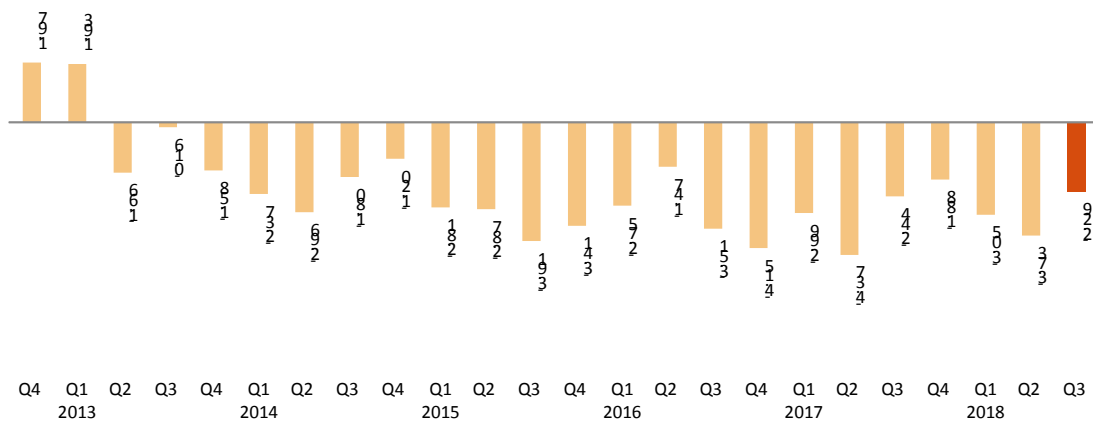
In the third quarter of 2018, the quarterly employment variation rate, adjusted for seasonal effects, was 0.48%.

Quarterly variation rate of seasonally adjusted employment. Percentage.



As regards seasonally-adjusted unemployment results, there was a decrease of 2.29%.

Quarterly variation rate of seasonally adjusted unemployment. Percentage.



The series adjusted for seasonal and calendar effects are obtained with the JDemetra+ software (version 2.2.0), as from the publication of data referring to 2018. The change of software from TRAMO/SEATS to JDemetra+ does not affect the seasonal adjustment methodology in the INE series, as the TRAMO/SEATS seasonal adjustment method is still used.

As explained in the methodology used for seasonal adjustment, the seasonal adjustment model is maintained for a year, with the first quarters corresponding to the time of the model's re-identification, but the coefficients are recalculated quarterly, so that each quarter the previous results are reviewed (either by re-identification or by revision of coefficients) and therefore the latest series available must always be consulted. The series of the quarterly variation rates of the seasonally adjusted results of employment and unemployment since 2005 and the description of the method used can be found in:

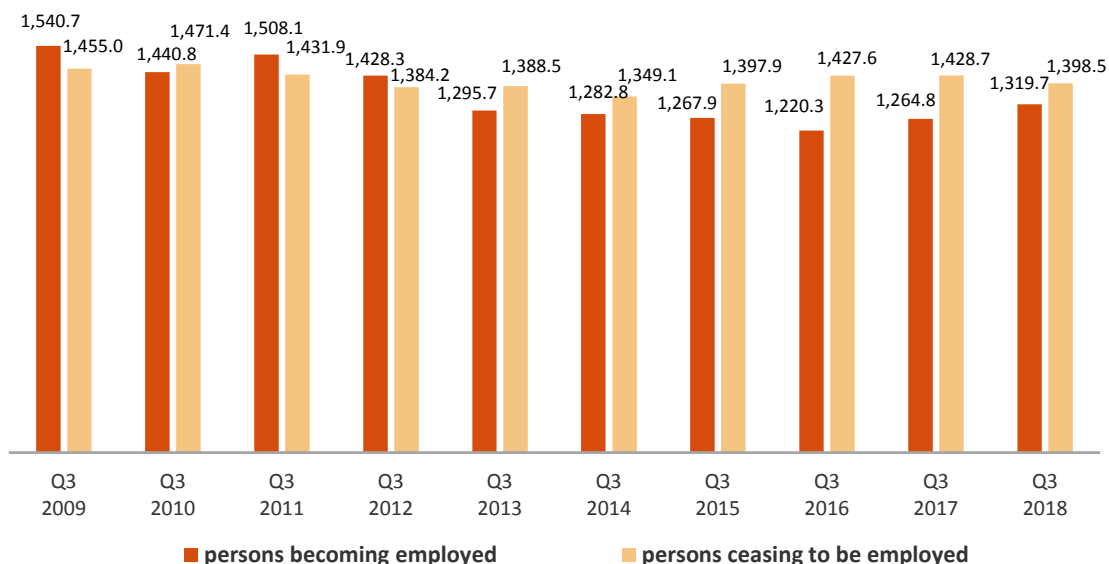
http://www.ine.es/daco/daco42/daco4211/epa_desestacional.xlsx

Flows in absolute values with respect to the previous quarter⁴

The total inflow into employment in the third quarter of 2018 was 1,398,500 people, 30,200 less than in the same quarter of the previous year.

However, the outflow from employment was 1,319,700 people, which is 54,900 more than in the same quarter of 2017.

Flows of persons becoming and ceasing to be employed each quarter. Thousands.

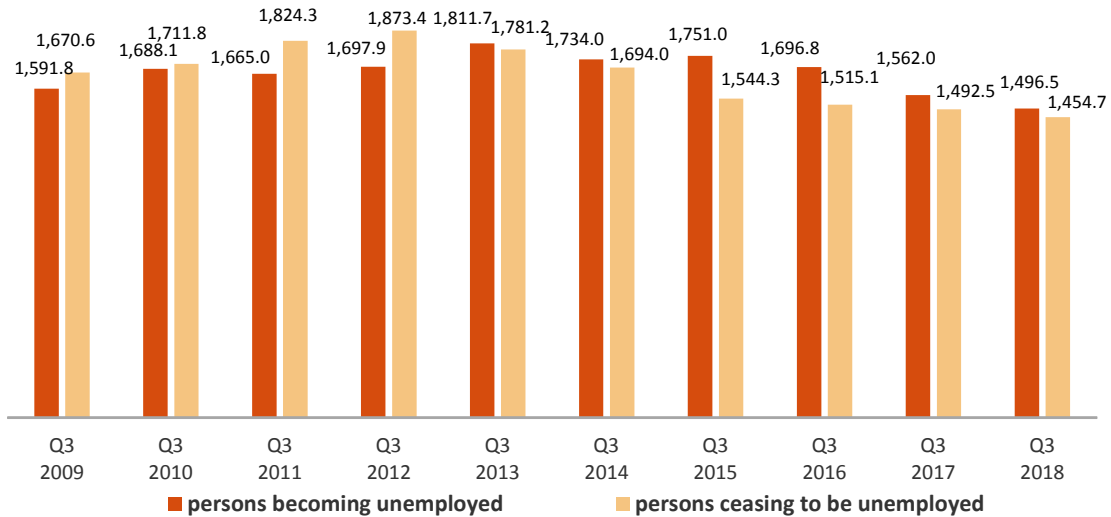


The number of persons who were unemployed three months ago but are not currently unemployed stood at 1,496,500, which is 65,500 fewer persons than in the same period in 2017.

⁴ This section compiles the results of the Economically Active Population Flow Statistics. Due to the methodology used when preparing it, the results might not match the net balances of quarterly EAPS. The differences are caused by the "no data recorded" groups (persons turning 16 years old in the change between one quarter and the next who did not live in Spain in the previous quarter).

However, the total inflow to unemployment reached 1,454,700 people, which is 37,800 fewer persons than in the same quarter of 2017.

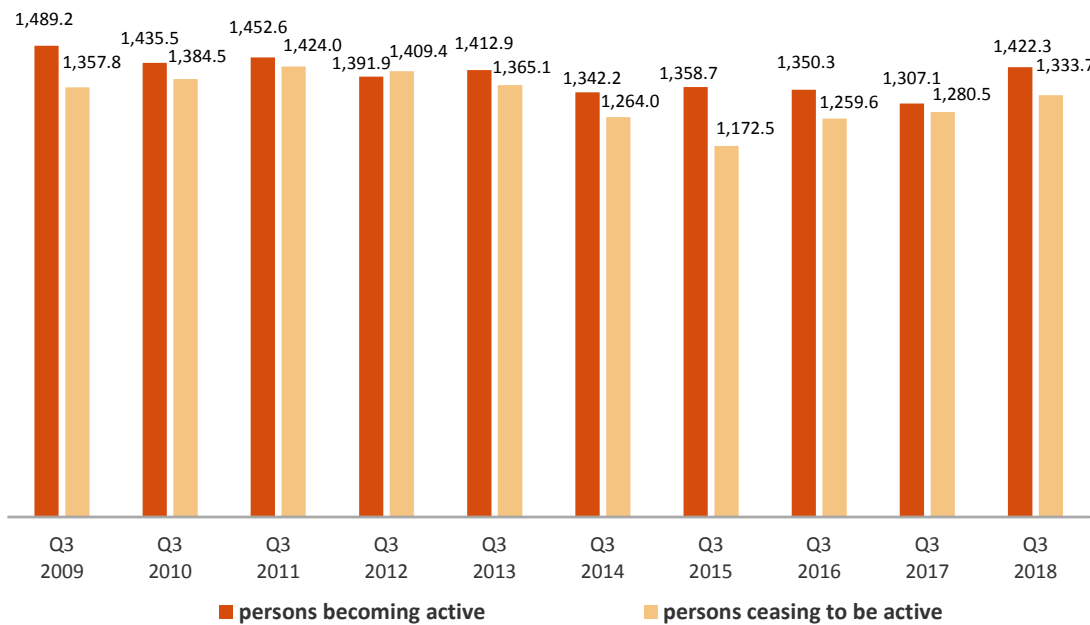
Flows of persons becoming and ceasing to be unemployed each quarter.
Thousands.



The inflow into activity in this third quarter was 1,333,700, a figure 74,300 higher than that of the same period in 2017.

Meanwhile, a total of 1,422,300 people have left the activity this quarter, compared to 1,307,100 who did so during the same quarter in the previous year (that is, 115,200 more).

Flows of persons becoming and ceasing to be active each quarter. Thousands.



The outflow from employment to inactivity of people aged 60 and over was 110,500 this quarter. This figure is 21,300 higher than the one observed in the third quarter of 2017.

The number of people under 25 who have been entering employment directly from inactivity this quarter stood at 243,200, a figure 10,300 higher than that observed in the third quarter of 2017.

The flow data on which these comments are based can be found in the annex to this press release <http://www.ine.es/daco/daco42/daco4211/epafluj0318.xls>

EAPS results by province

The provincial results summary of the EAPS may be accessed via the following link:

http://www.ine.es/en/daco/daco42/daco4211/epapro0318_en.pdf

All the provincial information can also be accessed from the INEbase database:

<http://www.ine.es/dynt3/inebase/en/index.html?padre=996>

Review and update of data

The data published today are final. All results are available on INEBase.

Methodological note

The Economically Active Population Survey (EAPS) has been carried out since 1964 and the methodology currently in force is that of 2005.

It is a continuous, quarterly research addressed to families, whose main purpose is to obtain data on the labour force and its various categories (employed, unemployed), as well as on the population outside the labour market (inactive).

As of the third quarter of 2009, the survey includes an additional sample in Galicia that is collected by the Galician Statistics Institute (IGE) using the same fieldwork system and methodology as the INE.

Type of survey: quarterly continuous survey.

Population scope: population residing in family dwellings.

Geographical scope: the entire national territory.

Reference period of the results: the quarter.

Reference period of the information: the week before the interview.

Sample size: 3,822 census tracts, around 65,000 dwellings and 160,000 people. Of the 3,822 tracts, 234 correspond to the additional sample of Galicia.

Type of sampling: two-stage sampling with stratification in the first stage units. The first stage units are the census tracts and the second stage units are the inhabited family dwellings.

Collection method: personal and telephone interview.

For more information you can access the methodology at:

https://www.ine.es/en/inebaseDYN/epa30308/docs/resumetepa_en.pdf

To the technical details of the survey design and evaluation of the quality of the data in:

http://www.ine.es/en/inebaseDYN/epa30308/docs/epa05_disenc_en.pdf

And the standardised methodological report at:

<https://www.ine.es/dynt3/metadatos/en/RespuestaDatos.html?oe=30308>

The Statistics on Economically Active Population Flows (EAPFS) collect information regarding the follow-up of population, or specific groups thereof, between one quarter and the previous one in absolute values, regarding its relation with labour market. This information links the interviewee's situations in two moments of time on the basis of the EAPS in order to study its evolution.

Given that in the EAPS sample one sixth is renewed each quarter and the remaining 5/6 parts are kept fixed between two consecutive quarters, the common part of the sample between the two conducts of the same survey is used to obtain flow statistics from the questions relating to the situation in which the interviewee was in the current and previous quarters.

Type of survey: quarterly exploitation of the common EAPS sample between consecutive quarters that provides estimates in absolute values of the situation in the current quarter compared with the relation with the activity of the previous quarter.

Population scope: population residing in family dwellings.

Geographical scope: the entire national territory.

Reference period of the results: the quarter.

Reference period of the information: the week before the interview.

Sample size: 3,822 census tracts. The common EPA sample between consecutive quarters is approximately 100,000 people aged 16 and older.

Type of sampling: two-stage sampling with stratification in the first stage units. The first stage units are the census tracts and the second stage units are the inhabited family dwellings.

Collection method: personal and telephone interview.

For more information you can access the methodology at:

https://www.ine.es/en/inebaseDYN/flujos30310/docs/metoflujos_valores_absolutos_en.pdf

And the standardised methodological report at:

<https://www.ine.es/dynt3/metadatos/en/RespuestaDatos.html?oe=30310>

For further information see **INEbase:** www.ine.es/en/ Twitter: [@es_ine](https://twitter.com/es_ine)

All press releases at: www.ine.es/en/prensa/prensa_en.htm

Press office: Telephone numbers: (+34) 91 583 93 63 /94 08 – gprensa@ine.es

Information Area: Telephone number: (+34) 91 583 91 00 – www.ine.es/infoine/?L=1

Economically Active Population Survey Third Quarter 2018

National results

(Continues)

	Current quarter	Variation on previous quarter		Variation on same quarter, previous year	
		Difference	Percentage	Difference	Percentage
1. Population aged 16 years and over by sex and labour status					
BOTH SEXES					
Population aged 16 years and over	38,912.4	77.0	0.20	249.7	0.65
Active population	22,854.0	19.8	0.09	73.0	0.32
- Employed persons	19,528.0	183.9	0.95	478.8	2.51
- Unemployed persons	3,326.0	-164.1	-4.70	-405.8	-10.87
Inactive population	16,058.4	57.2	0.36	176.6	1.11
Activity rate	58.73	-0.07	-	-0.19	-
Unemployment rate	14.55	-0.73	-	-1.83	-
Population aged 16 to 64 years	30,197.4	46.2	0.15	150.2	0.50
Activity rate (16-64)	75.00	-0.08	-	-0.19	-
Unemployment rate (16-64)	14.65	-0.73	-	-1.83	-
Employment rate (16-64)	64.01	0.48	-	1.22	-
MALES					
Population aged 16 years and over	18,920.1	36.1	0.19	114.1	0.61
Active population	12,272.0	69.7	0.57	40.8	0.33
- Employed persons	10,662.4	134.0	1.27	241.9	2.32
- Unemployed persons	1,609.6	-64.3	-3.84	-201.1	-11.11
Inactive population	6,648.1	-33.7	-0.50	73.3	1.12
Activity rate	64.86	0.25	-	-0.18	-
Unemployment rate	13.12	-0.60	-	-1.69	-
Population aged 16 to 64 years	15,098.5	21.1	0.14	65.6	0.44
Activity rate (16-64)	80.48	0.32	-	-0.13	-
Unemployment rate (16-64)	13.20	-0.60	-	-1.69	-
Employment rate (16-64)	69.85	0.76	-	1.25	-
FEMALES					
Population aged 16 years and over	19,992.3	41.0	0.21	135.5	0.68
Active population	10,582.0	-49.9	-0.47	32.2	0.31
- Employed persons	8,865.6	49.9	0.57	236.9	2.75
- Unemployed persons	1,716.4	-99.8	-5.50	-204.7	-10.65
Inactive population	9,410.3	90.9	0.98	103.3	1.11
Activity rate	52.93	-0.36	-	-0.20	-
Unemployment rate	16.22	-0.86	-	-1.99	-
Population aged 16 to 64 years	15,098.9	25.1	0.17	84.7	0.56
Activity rate (16-64)	69.52	-0.48	-	-0.23	-
Unemployment rate (16-64)	16.32	-0.87	-	-2.00	-
Employment rate (16-64)	58.17	0.21	-	1.20	-

2. Spanish population⁽¹⁾ aged 16 years and over by labour status

SPANISH POPULATION AGED 16 YEARS AND OVER	34,951.6	18.1	0.05	54.4	0.16
Active population	20,041.0	27.9	0.14	-9.0	-0.04
- Employed persons	17,295.7	154.3	0.90	357.4	2.11
- Unemployed persons	2,745.3	-126.4	-4.40	-366.4	-11.78
Inactive population	14,910.7	-9.9	-0.07	63.3	0.43
Activity rate	57.34	0.05	-	-0.12	-
Unemployment rate	13.70	-0.65	-	-1.82	-

⁽¹⁾ including dual nationality

25th October 2018

National results

(Continuation)

	Current quarter	Variation on previous quarter		Variation on same quarter, previous year	
		Difference	Percentage	Difference	Percentage
3. Foreign population aged 16 years and over by labour status					
FOREIGN POPULATION AGED 16 YEARS AND OVER	3,960.8	59.0	1.51	195.3	5.19
Active population	2,813.0	-8.1	-0.29	82.0	3.00
- Employed persons	2,232.3	29.6	1.34	121.3	5.75
- Unemployed persons	580.7	-37.7	-6.10	-39.3	-6.35
Inactive population	1,147.8	67.1	6.21	113.3	10.95
Activity rate	71.02	-1.28	-	-1.51	-
Unemployment rate	20.64	-1.28	-	-2.06	-
4. Employed persons by sex, age group and economic sector					
BOTH SEXES	19,528.0	183.9	0.95	478.8	2.51
16 to 19 years	165.5	34.7	26.50	17.6	11.91
20 to 24 years	908.0	54.5	6.38	25.0	2.83
25 to 29 years	1,695.0	22.5	1.35	53.7	3.27
30 to 34 years	2,120.6	-18.8	-0.88	-9.3	-0.44
35 to 39 years	2,707.0	-44.8	-1.63	-108.1	-3.84
40 to 44 years	3,143.0	15.8	0.51	89.3	2.92
45 to 49 years	2,862.7	26.7	0.94	106.3	3.86
50 to 54 years	2,572.4	23.2	0.91	99.0	4.00
55 and over	3,353.9	70.2	2.14	205.3	6.52
MALES	10,662.4	134.0	1.27	241.9	2.32
16 to 19 years	93.8	18.5	24.64	9.6	11.43
20 to 24 years	484.0	30.7	6.78	20.0	4.30
25 to 29 years	893.5	29.4	3.40	37.9	4.42
30 to 34 years	1,128.3	-15.1	-1.32	-4.9	-0.43
35 to 39 years	1,466.2	-12.2	-0.83	-56.5	-3.71
40 to 44 years	1,708.5	-6.2	-0.36	24.3	1.45
45 to 49 years	1,579.2	25.5	1.64	63.7	4.20
50 to 54 years	1,421.1	12.1	0.86	42.5	3.08
55 and over	1,887.8	51.1	2.78	105.4	5.91
FEMALES	8,865.6	49.9	0.57	236.9	2.75
16 to 19 years	71.6	16.1	29.01	8.0	12.55
20 to 24 years	424.0	23.7	5.93	5.0	1.19
25 to 29 years	801.5	-6.9	-0.85	15.8	2.02
30 to 34 years	992.3	-3.8	-0.38	-4.4	-0.44
35 to 39 years	1,240.8	-32.6	-2.56	-51.6	-3.99
40 to 44 years	1,434.4	22.0	1.56	65.0	4.74
45 to 49 years	1,283.5	1.2	0.09	42.6	3.43
50 to 54 years	1,151.4	11.1	0.97	56.5	5.16
55 and over	1,466.2	19.1	1.32	99.9	7.31
TOTAL EMPLOYED PERSONS	19,528.0	183.9	0.95	478.8	2.51
Agriculture	768.4	-54.0	-6.57	-8.6	-1.11
Industry	2,725.7	2.8	0.10	55.0	2.06
Construction	1,240.2	24.9	2.05	85.6	7.41
Services	14,793.8	210.2	1.44	346.8	2.40

National results

(Continuation)

	Current quarter	Variation on previous quarter		Variation on same quarter, previous year	
		Difference	Percentage	Difference	Percentage
5. Employed persons by professional status, type of contract, public / private sectors and working hours					
TOTAL EMPLOYED PERSONS	19,528.0	183.9	0.95	478.8	2.51
BY PROFESSIONAL STATUS					
Self-employed persons	3,086.5	7.2	0.23	-49.7	-1.58
- Employers	981.4	32.2	3.39	11.7	1.21
- Independent workers	2,001.0	-25.8	-1.27	-45.7	-2.23
- Cooperative members	27.4	1.0	3.79	1.2	4.56
- Family workers	76.6	-0.2	-0.30	-16.9	-18.08
Employees	16,433.6	176.3	1.08	526.9	3.31
- With a permanent job	11,925.7	25.3	0.21	374.1	3.24
- With a temporary job	4,507.9	151.0	3.46	152.9	3.51
Others	7.9	0.4	5.80	1.5	23.74
BY PUBLIC / PRIVATE SECTORS					
Public sector employed persons	3,167.5	49.7	1.59	105.5	3.44
Private sector employed persons	16,360.4	134.2	0.83	373.3	2.33
BY WORKING HOURS					
Full-time employed persons	16,814.2	369.8	2.25	490.8	3.01
Males	9,963.8	175.6	1.79	266.2	2.74
Females	6,850.4	194.3	2.92	224.6	3.39
Part-time employed persons	2,713.8	-185.9	-6.41	-12.0	-0.44
Males	698.6	-41.5	-5.61	-24.3	-3.36
Females	2,015.2	-144.4	-6.69	12.3	0.61

(*) Private employment includes all persons in employment other than public employees. Namely: private employees, employers, independent workers, cooperative members, family workers and other professional status.

6. Unemployed persons by sex, age group, and economic sector

BOTH SEXES	3,326.0	-164.1	-4.70	-405.8	-10.87
16 to 19 years	137.8	-1.9	-1.36	-12.5	-8.34
20 to 24 years	391.0	8.0	2.09	-37.8	-8.83
25 to 54 years	2,334.2	-121.6	-4.95	-294.4	-11.20
55 and over	463.0	-48.6	-9.50	-61.0	-11.64
MALES	1,609.6	-64.3	-3.84	-201.1	-11.11
16 to 19 years	78.0	-0.8	-1.07	-12.8	-14.07
20 to 24 years	219.9	7.3	3.45	-17.4	-7.34
25 to 54 years	1,076.9	-35.4	-3.18	-130.4	-10.80
55 and over	234.8	-35.4	-13.11	-40.5	-14.71
FEMALES	1,716.4	-99.8	-5.50	-204.7	-10.65
16 to 19 years	59.8	-1.1	-1.74	0.2	0.38
20 to 24 years	171.1	0.7	0.40	-20.4	-10.67
25 to 54 years	1,257.3	-86.3	-6.42	-164.0	-11.54
55 and over	228.3	-13.2	-5.45	-20.5	-8.24
TOTAL UNEMPLOYED PERSONS	3,326.0	-164.1	-4.70	-405.8	-10.87
Agriculture	194.3	7.8	4.20	-40.8	-17.35
Industry	161.6	-2.0	-1.20	5.8	3.70
Construction	132.4	9.3	7.58	-8.1	-5.78
Services	1,085.3	-58.6	-5.12	-76.6	-6.59
Lost their job more than 1 year ago	1,383.0	-129.3	-8.55	-230.1	-14.26
First job seekers	369.2	8.5	2.36	-56.0	-13.16

National results

(Conclusion)

	Current quarter	Variation on previous quarter		Variation on same quarter, previous year	
		Difference	Percentage	Difference	Percentage

7. Unemployment rate by relationship with the reference person

	Current quarter	Variation on previous quarter	Percentage	Variation on same quarter, previous year	Percentage
TOTAL	14.55	-0.73	-	-1.83	-
Reference person	11.62	-0.67	-	-1.40	-
Spouse or partner	11.85	-1.03	-	-1.99	-
Child	26.52	-0.61	-	-2.27	-
Other relatives	21.14	-1.40	-	-4.29	-
Unrelated persons	12.42	-1.85	-	-1.02	-

8. Household data

	Current quarter	Variation on previous quarter	Percentage	Variation on same quarter, previous year	Percentage
TOTAL HOUSEHOLDS	18,589.5	27.3	0.15	74.2	0.40
Households with at least one active member	13,366.2	-6.8	-0.05	4.8	0.04
- All members employed	10,551.0	139.3	1.34	315.8	3.08
- All members unemployed	1,083.7	-29.5	-2.65	-110.2	-9.23
Households without any active population	5,223.2	34.1	0.66	69.4	1.35

Mobility according to activity in current and previous quarter

Classification in previous quarter	Classification in current quarter			
	Total	Employed	Unemployed persons	Inactive
BOTH SEXES				
Total	38,912.4	19,528.0	3,326.0	16,058.4
Employed persons	19,449.1	18,129.4	688.9	630.8
Unemployed persons	3,367.7	827.4	1,871.3	669.0
Inactive	15,969.8	570.4	763.3	14,636.1
Not classifiable	125.7	0.7	2.6	122.5
MALES				
Total	18,920.1	10,713.6	1,588.6	6,618.0
Employed persons	10,610.4	10,012.4	358.7	239.4
Unemployed persons	1,591.9	424.2	914.0	253.7
Inactive	6,655.4	277.0	313.4	6,065.0
Not classifiable	62.4	0.0	2.6	59.9
FEMALES				
Total	19,992.3	8,814.4	1,737.4	9,440.5
Employed persons	8,838.7	8,117.1	330.1	391.5
Unemployed persons	1,775.8	403.2	957.3	415.3
Inactive	9,314.5	293.5	449.9	8,571.1
Not classifiable	63.3	0.7	0.0	62.6

Weighting factors of current quarter (backward analysis)

Results by autonomous community and autonomous city

(Continues)

	Current quarter	Variation on previous quarter		Variation on same quarter, previous year	
		Difference	Percentage	Difference	Percentage
1. Population aged 16 years and over					
TOTAL	38,912.4	77.0	0.20	249.7	0.65
Andalucía	6,920.0	9.0	0.13	17.7	0.26
Aragón	1,094.7	1.9	0.18	1.7	0.15
Asturias, Principado de	892.4	-1.4	-0.16	-7.6	-0.84
Balears, Illes	985.7	7.0	0.72	27.2	2.84
Canarias	1,862.2	9.1	0.49	38.0	2.08
Cantabria	492.2	0.4	0.08	0.8	0.16
Castilla y León	2,048.1	-2.1	-0.10	-14.2	-0.69
Castilla-La Mancha	1,673.7	1.1	0.07	-1.8	-0.11
Cataluña	6,208.2	20.0	0.32	76.6	1.25
Comunitat Valenciana	4,133.0	3.5	0.09	14.3	0.35
Extremadura	896.5	-0.8	-0.08	-6.5	-0.72
Galicia	2,333.4	-0.1	0.00	-6.5	-0.28
Madrid, Comunidad de	5,428.3	21.5	0.40	87.0	1.63
Murcia, Región de	1,200.5	3.8	0.32	8.3	0.70
Navarra, Comunidad Foral de	531.3	1.5	0.29	5.9	1.12
País Vasco	1,823.3	2.0	0.11	6.6	0.36
Rioja, La	260.5	0.2	0.09	1.5	0.60
Ceuta	65.7	0.0	0.01	0.3	0.51
Melilla	62.7	0.1	0.20	0.3	0.56

2. Active population

TOTAL	22,854.0	19.8	0.09	73.0	0.32
Andalucía	3,930.9	-11.8	-0.30	-27.0	-0.68
Aragón	643.6	2.6	0.41	6.5	1.02
Asturias, Principado de	455.7	1.5	0.33	-1.4	-0.31
Balears, Illes	669.6	22.9	3.54	24.1	3.73
Canarias	1,131.5	22.5	2.03	37.1	3.39
Cantabria	271.2	-0.1	-0.02	-2.9	-1.07
Castilla y León	1,124.0	4.3	0.38	-10.4	-0.92
Castilla-La Mancha	981.6	-1.1	-0.12	8.3	0.86
Cataluña	3,797.6	5.2	0.14	5.3	0.14
Comunitat Valenciana	2,431.4	-0.5	-0.02	-9.7	-0.40
Extremadura	495.9	-2.3	-0.47	5.5	1.11
Galicia	1,249.4	-1.4	-0.11	-4.8	-0.38
Madrid, Comunidad de	3,394.1	-3.6	-0.11	37.0	1.10
Murcia, Región de	711.3	-0.9	-0.12	0.0	0.00
Navarra, Comunidad Foral de	314.1	-1.2	-0.38	2.3	0.73
País Vasco	1,017.4	-15.9	-1.54	-6.1	-0.59
Rioja, La	155.2	0.6	0.36	3.5	2.31
Ceuta	38.8	-1.7	-4.24	2.8	7.76
Melilla	40.4	0.4	1.12	3.0	8.00

* Data below 5000 are subject to strong variations, due to sampling error

(:) The variation percentages calculated from low figures with high sampling errors are not significant

Results by autonomous community and autonomous city

(Conclusion)

	Current quarter	Variation on previous quarter		Variation on same quarter, previous year	
		Difference	Percentage	Difference	Percentage
3. Employed persons					
TOTAL	19,528.0	183.9	0.95	478.8	2.51
Andalucía	3,032.7	0.3	0.01	80.4	2.72
Aragón	580.1	3.0	0.51	9.8	1.73
Asturias, Principado de	394.4	-0.3	-0.07	-3.5	-0.88
Balears, Illes	621.7	47.5	8.27	35.8	6.12
Canarias	909.3	22.7	2.56	54.1	6.33
Cantabria	246.8	6.9	2.90	7.4	3.09
Castilla y León	997.0	11.7	1.18	10.3	1.04
Castilla-La Mancha	817.6	22.7	2.85	25.3	3.20
Cataluña	3,393.9	33.5	1.00	77.3	2.33
Comunitat Valenciana	2,059.6	8.0	0.39	45.6	2.26
Extremadura	388.4	9.0	2.37	19.4	5.26
Galicia	1,096.5	20.7	1.92	24.0	2.23
Madrid, Comunidad de	2,991.7	4.3	0.14	49.3	1.67
Murcia, Región de	595.1	-1.0	-0.17	12.6	2.17
Navarra, Comunidad Foral de	283.8	-0.2	-0.06	4.8	1.72
País Vasco	921.5	-7.2	-0.77	16.4	1.81
Rioja, La	140.3	2.2	1.58	7.8	5.85
Ceuta	26.8	-1.7	-6.05	-1.1	-3.94
Melilla	30.7	1.9	6.66	3.1	11.13

4. Unemployed persons

TOTAL	3,326.0	-164.1	-4.70	-405.8	-10.87
Andalucía	898.2	-12.1	-1.33	-107.4	-10.68
Aragón	63.6	-0.4	-0.56	-3.4	-5.03
Asturias, Principado de	61.3	1.8	3.02	2.1	3.56
Balears, Illes	48.0	-24.6	-33.88	-11.7	-19.68
Canarias	222.3	-0.1	-0.07	-17.0	-7.12
Cantabria	24.4	-7.0	-22.30	-10.3	-29.78
Castilla y León	127.0	-7.4	-5.48	-20.7	-14.02
Castilla-La Mancha	164.0	-23.8	-12.67	-17.0	-9.40
Cataluña	403.7	-28.3	-6.55	-72.0	-15.13
Comunitat Valenciana	371.9	-8.5	-2.23	-55.3	-12.94
Extremadura	107.5	-11.3	-9.53	-13.9	-11.49
Galicia	153.0	-22.1	-12.60	-28.7	-15.82
Madrid, Comunidad de	402.5	-7.9	-1.92	-12.3	-2.97
Murcia, Región de	116.2	0.2	0.13	-12.6	-9.79
Navarra, Comunidad Foral de	30.3	-1.0	-3.21	-2.5	-7.64
País Vasco	95.8	-8.7	-8.30	-22.5	-18.99
Rioja, La	14.9	-1.6	-9.78	-4.3	-22.21
Ceuta	11.9	0.0	0.09	3.9	(:)
Melilla	9.7	-1.5	-13.16	-0.1	-0.86

* Data below 5,000 are subject to strong variations, due to sampling error

(:) The variation percentages calculated from low figures with high sampling errors are not significant

Results by autonomous community and autonomous city

(Absolute figures in thousands and rates in percentage)

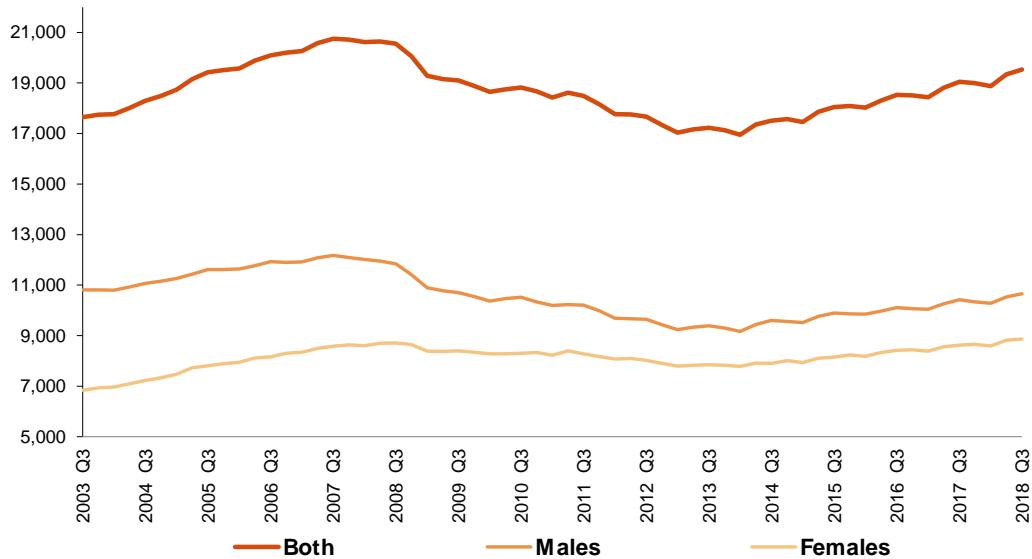
5. Employed and unemployed persons by sex. Activity and unemployment rates

	Both sexes				Males				Females			
	Employed persons	Unemployed persons	Activity rate	Unem. rate	Employed persons	Unemployed persons	Activity rate	Unem. Rate	Employed persons	Unemployed persons	Activity rate	Unem. Rate
TOTAL	19,528.0	3,326.0	58.73	14.55	10,662.4	1,609.6	64.86	13.12	8,865.6	1,716.4	52.93	16.22
Andalucía	3,032.7	898.2	56.81	22.85	1,746.6	420.7	64.00	19.41	1,286.1	477.6	49.91	27.08
Aragón	580.1	63.6	58.79	9.87	319.7	27.2	64.55	7.85	260.4	36.3	53.24	12.24
Asturias, Principado de	394.4	61.3	51.06	13.45	206.0	30.9	55.96	13.03	188.4	30.4	46.64	13.90
Baleares, Illes	621.7	48.0	67.93	7.16	326.3	26.5	72.13	7.52	295.3	21.4	63.79	6.76
Canarias	909.3	222.3	60.76	19.64	488.5	115.8	65.87	19.16	420.8	106.5	55.80	20.20
Cantabria	246.8	24.4	55.10	8.99	135.2	11.6	61.60	7.89	111.7	12.8	49.00	10.29
Castilla y León	997.0	127.0	54.88	11.30	556.7	62.1	61.38	10.04	440.4	64.9	48.58	12.84
Castilla-La Mancha	817.6	164.0	58.65	16.71	485.2	72.2	66.52	12.96	332.4	91.8	50.76	21.63
Cataluña	3,393.9	403.7	61.17	10.63	1,803.4	211.2	66.97	10.48	1,590.6	192.5	55.72	10.79
Comunitat Valenciana	2,059.6	371.9	58.83	15.29	1,140.6	177.8	65.28	13.49	918.9	194.0	52.67	17.43
Extremadura	388.4	107.5	55.32	21.68	228.1	49.5	62.64	17.84	160.4	58.0	48.17	26.55
Galicia	1,096.5	153.0	53.55	12.24	574.7	72.0	57.95	11.14	521.8	81.0	49.51	13.43
Madrid, Comunidad de	2,991.7	402.5	62.53	11.86	1,558.7	196.6	68.29	11.20	1,433.0	205.9	57.34	12.56
Murcia, Región de	595.1	116.2	59.25	16.33	342.3	54.0	66.49	13.63	252.8	62.2	52.12	19.73
Navarra, Comunidad Foral de	283.8	30.3	59.12	9.65	154.3	13.5	64.16	8.05	129.6	16.8	54.24	11.48
País Vasco	921.5	95.8	55.80	9.42	485.1	52.1	61.38	9.69	436.5	43.8	50.65	9.12
Rioja, La	140.3	14.9	59.58	9.60	76.0	6.9	64.85	8.28	64.3	8.0	54.50	11.11
Ceuta	26.8	11.9	59.05	30.79	16.0	4.8	64.47	22.99	10.8	7.2	53.83	39.79
Melilla	30.7	9.7	64.46	24.01	19.2	4.2	72.81	18.12	11.5	5.5	55.68	32.12

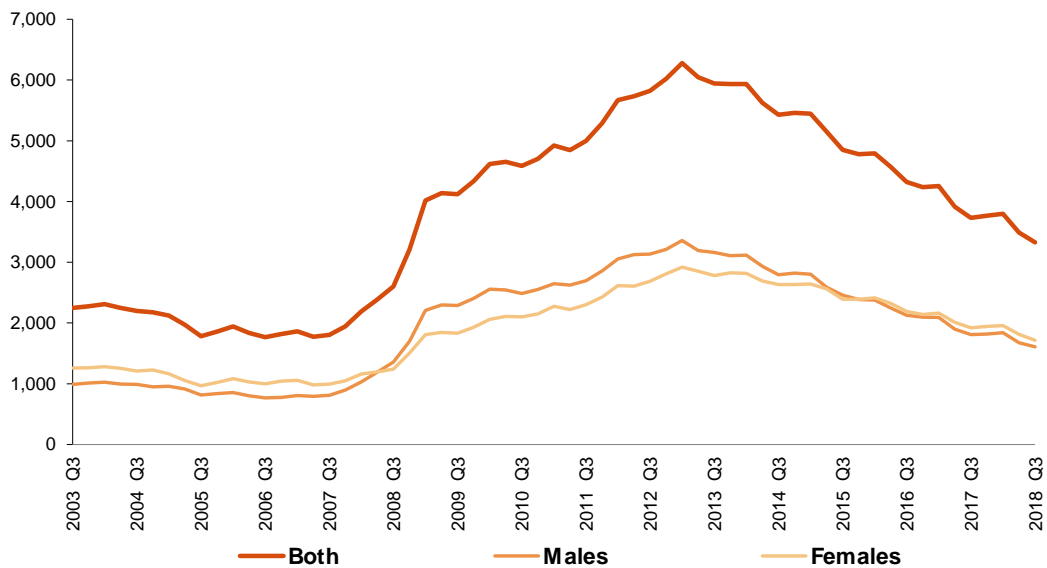
* Data below 5,000 are subject to strong variations, due to sampling errors

Employed and Unemployed by sex APS
Third Quarter 2018

Employed. Thousands



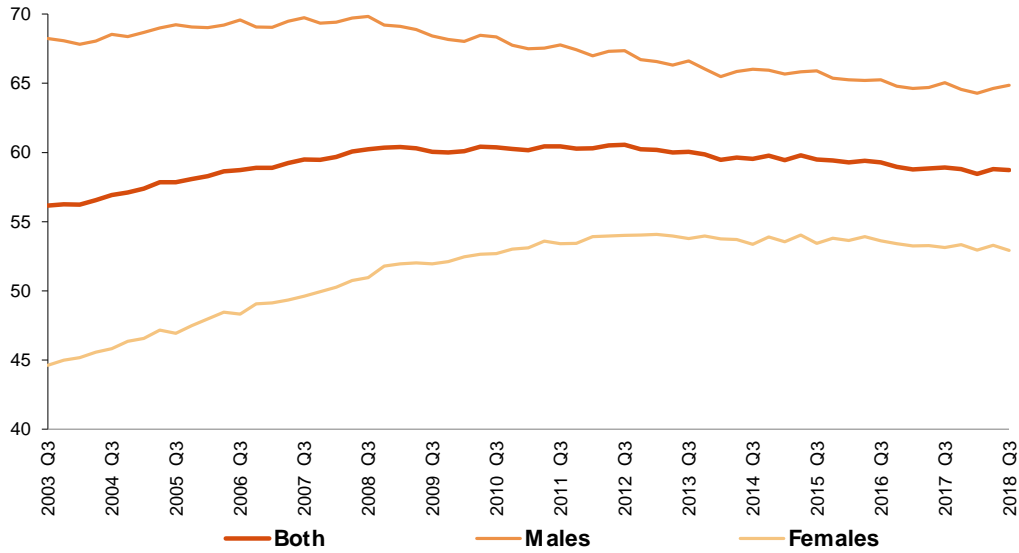
Unemployed. Thousands



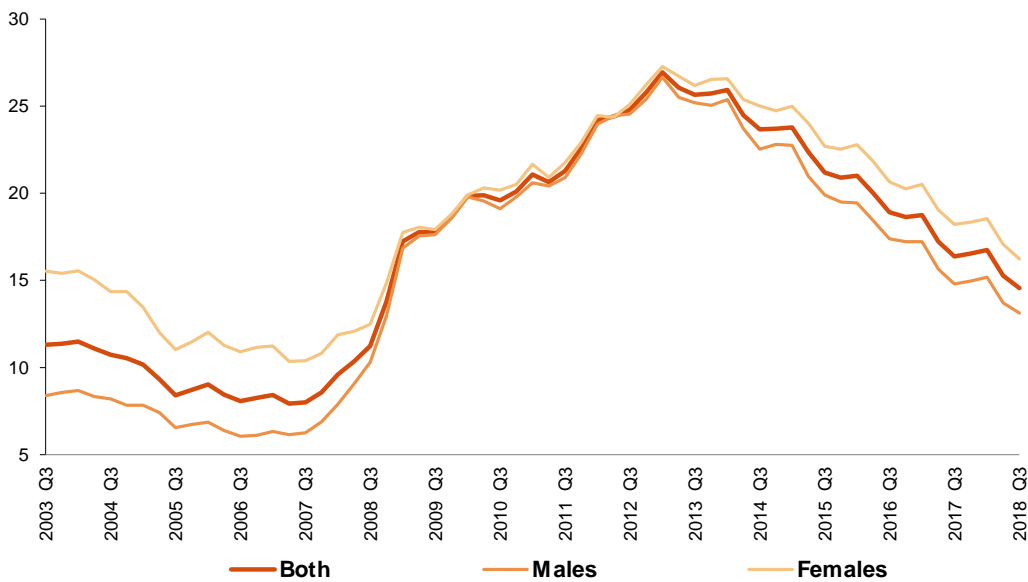
Activity and unemployment rates by sex
Third Quarter 2018

APS

Activity rate. Percentage



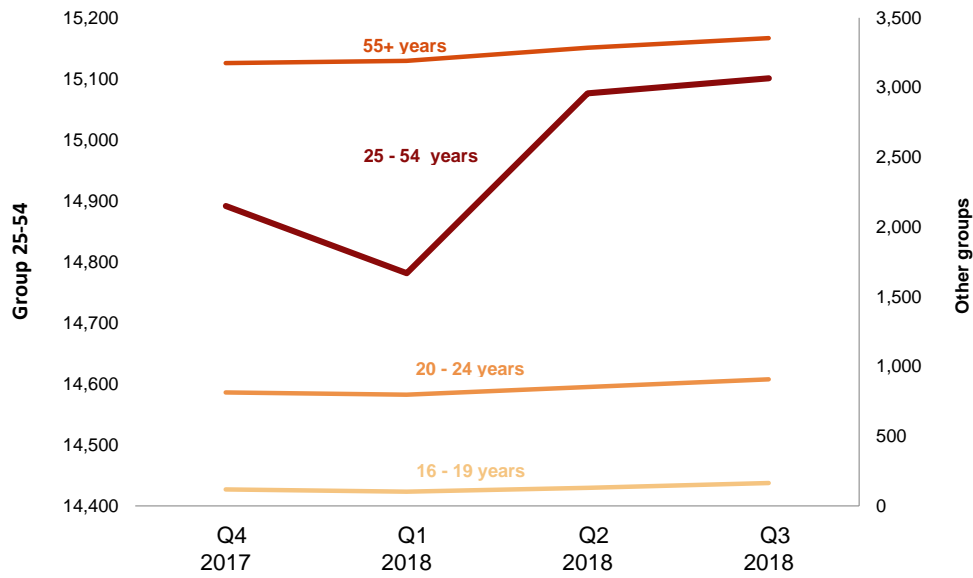
Unemployment rate. Percentage



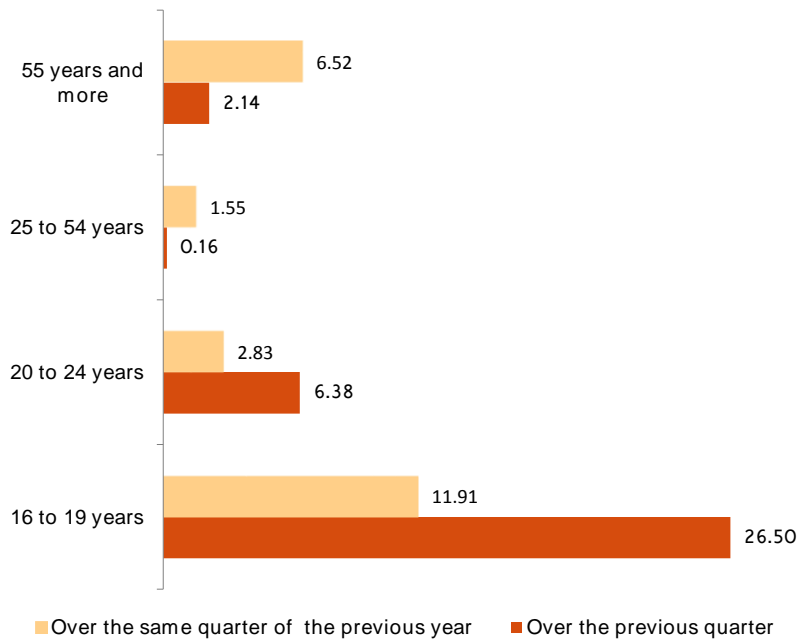
Employment by age
Third Quarter 2018

APS

Employment. Thousands



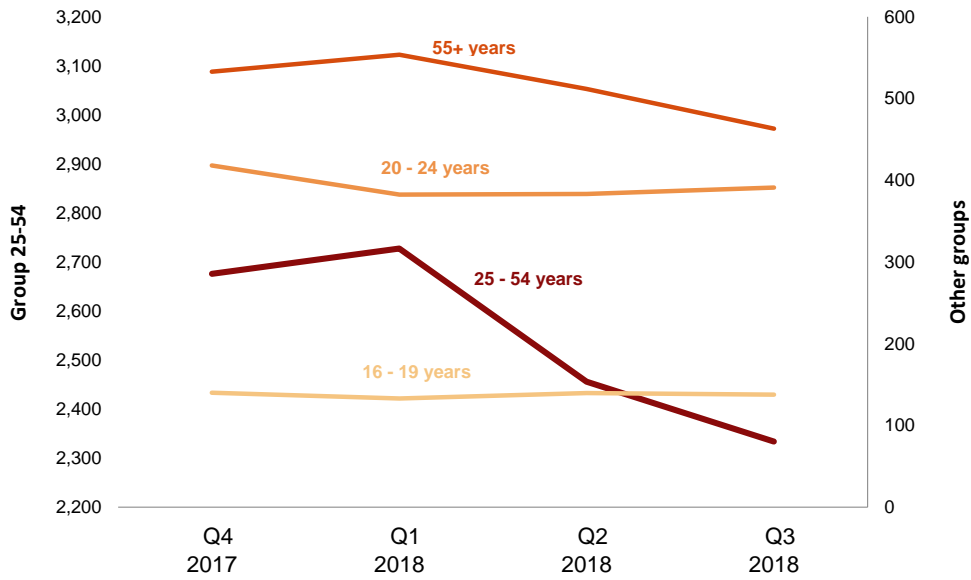
Variation of employment. Thousands



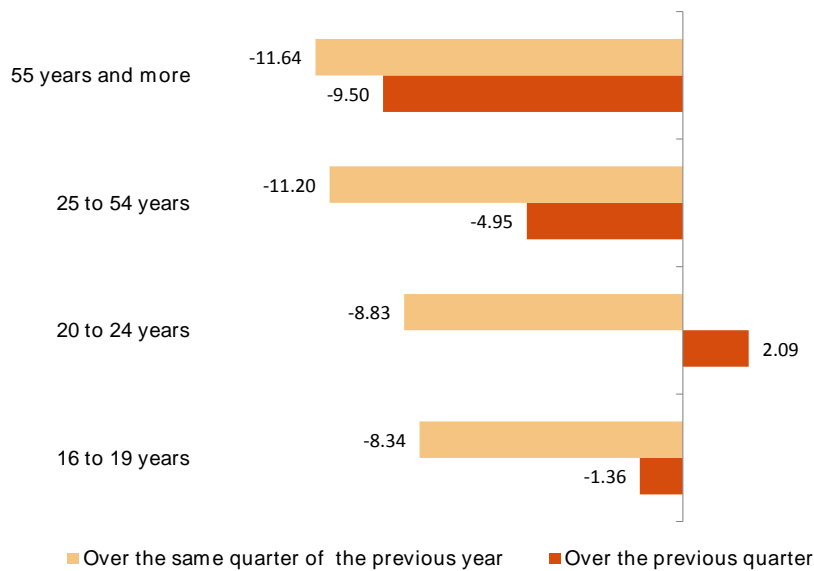
Unemployment by age
Third Quarter 2018

APS

Unemployment. Thousands



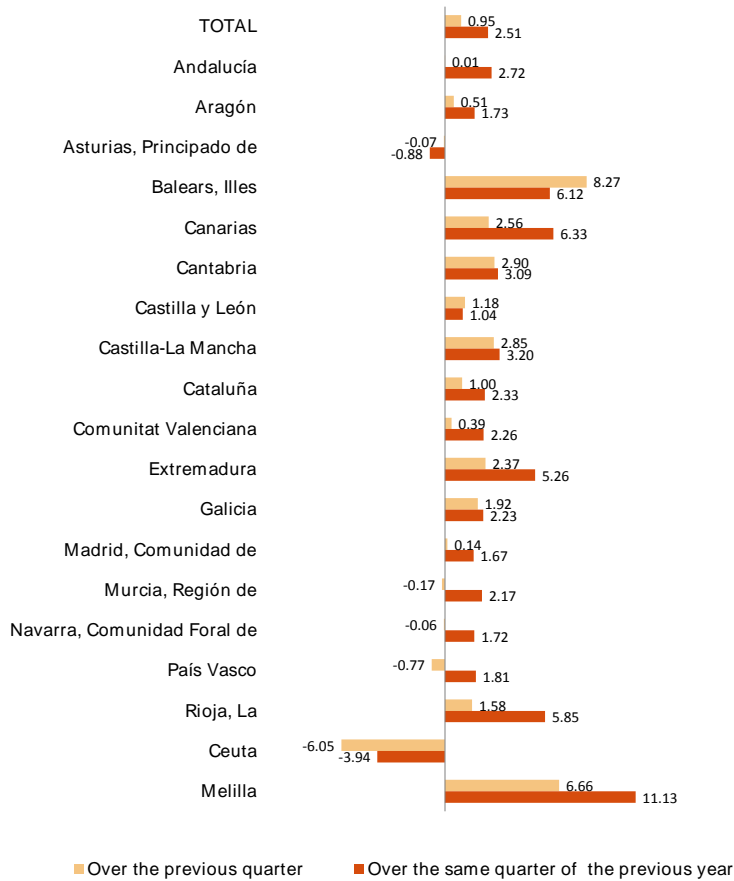
Variation of unemployment. Thousands



Third Quarter 2018

APS

Variation of employment. Percentage



Unemployment rate
(Spain= 14.55)

