

Economically Active Population Survey (EAPS) Fourth quarter of 2008

Main results

- The number of employed persons in the fourth quarter of 2008 stands at 19,856,800 (489,600 fewer than in the third quarter). In the last year, employment has decreased by 620,100 persons. The interannual employment rate stands at -3.03%.
- The activity rate stands at 60.13%, 18 hundredths more than in the third quarter of the year. For men, the rate is 69.21% (six tenths lower than the previous quarter), while the rate for women is 51.38% (92 hundredths higher).
- The number of unemployed persons increases by 609,100 persons as compared with the previous quarter, standing at 3,207,900. The unemployment rate increases 2.58 points, reaching 13.91%. The number of unemployed persons has increased by 1,280,300 persons during the year 2008.
- The total number of wage earners decreases by 438,000 persons as compared with the previous quarter, and stands at 16,308,200. In the past year, the number of wage earners has decreased by 568,400 persons. Wage earners with a permanent contract decrease by 47,500 persons this quarter (over the entire year, they increase by 95,700 persons), while temporary wage earners decrease by 390,500 persons (there is a decrease of 664,100 persons over the year 2008). The temporary employment rate stands at 27.93%, with a decrease of 1.6 points as compared with the previous quarter.
- The number of employed persons decreases in all Autonomous Communities as compared with the previous quarter. The greatest decreases are recorded in Cataluña (96,200 fewer employed persons), Andalucía (85,600) and Illes Balears (39,700).
- Unemployment increases in all Autonomous Communities as compared with the previous quarter. The greatest increases in unemployment are in Andalucía (145,700 more unemployed persons than in the previous quarter), Cataluña (112,100), Comunitat Valenciana (68,900) and Comunidad de Madrid (62,500).
- **Since 2008, the EAPS has encoded economic activity with the new NACE-2009 Activities Classification. During the four quarters of 2008, a double encoding has been performed for the activity, also incorporating the NACE-1993 code used in the survey up until the fourth quarter of 2007, in order to enable comparisons with previous quarters. In the annex to this press release, additional information may be consulted regarding the new classification.**

The number of active persons in Spain stands at 23,064,700 persons

The total number of active persons reached 23,064,700 in the fourth quarter of 2008, with an increase of 119,600 persons as compared with the previous quarter. The activity rate was 60.13%, that is, 18 hundredths more than in the previous quarter.

The number of active women increased by 202,600 persons this quarter, standing for the first time over 10 million (10,035,200). The female activity rate increased 92 hundredths, reaching 51.38%. On the other hand, the number of active men stood at 13,029,500, with a decrease of 83,000 persons. The male activity rate decreased six tenths this last quarter, standing at 69.21%.

During the past 12 months, the number of active persons increased by 660,200 persons, of whom 507,100 were women.

The activity rate for the foreign population (77.31%) increased almost one point this quarter, while that of the Spanish population remained practically the same (it rose four hundredths to 57.71%). The difference between the two activity rates was nearly 20 points. To a large extent, the age structure of the foreign nationals explained this difference.

Employment decreases by 489,600 persons this quarter, to 19,856,800

The number of employed persons stood at 19,856,800, that is, 489,600 fewer than in the third quarter of the year. In the last 12 months, the number of employed persons decreased by 620,100 persons.

The interannual employment rate was -3.03% in the fourth quarter of 2008, that is, 2.23 points lower than the previous quarter (-0.80%).

Employment decreased for women (71,300 fewer employed women than in the previous quarter), and decreased for men (418,300 fewer employed men). In the past 12 months, employment grew for women (36,400 more employed women), but decreased for men (656,500 fewer).

The number of employed Spaniards decreased by 428,200 persons in the last three months, and the number of employed foreign nationals decreased by 61,400 persons. In the fourth quarter of 2008, 14.54% of the total employed persons were foreign nationals.

Only small increases in employment are observed in the groups aged 50 years old and over. In the rest of the age groups up to 49 years old, the number of employed persons decreases, with the drop being of particular note for the group aged 20 to 24 years old, with 151,600 employed persons fewer than in the previous quarter.

By sex, employment among men decreased for all age groups. In the case of women, the number of employed persons decreased among women under 35 years, and increased for women aged 35 years and over.

Regarding the quarter-on-quarter evolution by activity sector¹, the number of persons employed in agriculture increased by 14,400 persons, to stand at 863,400. Those employed in industry decreased by 168,100 persons, to a total of 3,059,600. In the construction sector, this fourth quarter of the year, a decrease of 228,200 persons was recorded in the number of employed persons, with employment in the sector standing at 2,135,000. Lastly, the number

¹ According to the NACE-1993 classification of activities

of those employed in services stood at 13,798,700, with a decrease of 107,700 employed persons as compared with the previous quarter.

By interannual variation, employment decreased by 558,500 persons in construction (-20.73%), by 219,500 in industry (-6.69%), and by 42,400 in agriculture (-4.68%). In turn, the number of employed persons increased by 200,200 persons in services (1.47%).

The number of wage earners with permanent contracts decreases by 390,500 persons

The total number of wage earners in the fourth quarter of 2008 was 16,308,200 persons, with a decrease of 438,000 persons as compared with the previous quarter. The number of wage earners with permanent contracts dropped by 47,500 persons, to stand at 11,753,900. Wage earners with temporary contracts decreased by 390,500 persons, to a total of 4,554,300.

The temporary employment rate stood at 27.93%, with a decrease of 1.6 points as compared with the previous quarter.

In the past 12 months, the total number of wage earners decreased by 568,400 persons. Wage earners with a permanent contract increased by 95,700 persons, while wage earners with a temporary contract decreased by 664,100 persons.

The salary rate decreased 18 hundredths, to stand at 82.13%.

Regarding the **working day**, during this quarter, 2,479,000 part-time employed persons were registered, of whom 1,983,800 were women. Part-time employment increased for both women (141,100 more) and men (14,000 more).

Full-time employed persons decreased by 644,700 as compared with the previous quarter. The number of full-time employed men decreased by 432,300, while the number of women decreased by 212,400.

The percentage of part-time employed persons was 12.48%, more than one point higher than the previous quarter (which was 11.42%).

Unemployment increases by 609,100 persons, and the unemployment rate stands at 13.91%

Unemployment grew by 609,100 persons in the last quarter of 2008. The total number of unemployed persons stood at 3,207,900, with an increase of 1,280,300 in the last 12 months.

The unemployment rate increased 2.58 points this quarter, and reached 13.91% of the active population.

Unemployment increased more for men (335,300) than for women (273,800) this quarter. The total number of unemployed men (1,688,800) surpassed that of women by 169,800 persons.

The male unemployment rate was 12.96%, that is, 2.64 points higher than in the third quarter of 2008. The female rate increased 2.47 points, standing at 15.14%. In recent quarters, the two rates have progressively converged.

Unemployment grew by 452,800 persons among Spaniards and by 156,300 persons among foreign nationals. The unemployment rate for Spaniards was 12.52% (2.32 points higher than the previous quarter), and that for foreign nationals was 21.26% (3.81 points higher).

Unemployment increased for all age groups this quarter, except that aged 16 to 19 years, which registered a decrease of 3,700 unemployed persons, due to the evolution of women (7,600 fewer unemployed women, as compared with the previous quarter, for said age group). The greatest increase in absolute value was among persons aged 25 to 54 years old, with 488,800 more unemployed persons, of whom 264,800 were men.

Regarding quarter-on-quarter evolution by sector², unemployment rose in all of them. The services sector registered 210,700 more unemployed persons, construction registered 143,400, industry 80,200 and agriculture 3,400.

The number of unemployed persons also grew among those who had lost their jobs more than one year ago (by 179,600 persons), while it decreased among those seeking their first job (8,100 fewer unemployed persons).

The interannual comparison also showed growth in unemployment in all sectors, with increases of 393,900 unemployed persons in services, 359,900 in construction, 155,500 in industry and 35,000 in agriculture.

Unemployment rose as well among those seeking their first job (by 63,600 persons), and among persons who had lost their jobs more than one year ago (by 273,300).

The unemployment rate for the household reference person rose 2.47 points and stood at 11.18%. That of the spouse or partner increased 2.17 points to 11.90%, and that of children increased 3.90 points, to 21.81%.

The number of households in which all active members are unemployed increases by 189,100 households

In the fourth quarter of 2008, the number of households with all active members working stood at 10,099,100, that is, 384,700 fewer than the previous quarter, and 596,300 fewer than one year prior.

The number of households with all active members unemployed increased by 189,100 as compared with the previous quarter. In the past 12 months, this number increased by 385,500 households.

Mobility as related to activity

In terms of quarter-on-quarter mobility as related to activity, it could be seen that the proportion of unemployed persons who were employed three months ago was 32.01%, that is, 2.13 points higher than in the third quarter of 2008.

The percentage of employed persons who were also employed in the previous quarter stood at 93.14%, practically the same as three months ago.

The percentage of employed persons who were unemployed in the third quarter was 3.57%, that is, 12 hundredths greater than that recorded in the previous quarter. The percentage of employed persons who were previously inactive was 3.30%, 15 hundredths lower than for the third quarter.

The percentage of inactive persons who were employed in the previous quarter rose 60 hundredths, to 5.46%.

² According to the NACE-1993 classification of activities

The likelihood of remaining unemployed was 44.19%, representing a decrease of 41 hundredths as compared with the third quarter of the year, while the likelihood of remaining inactive was 91.52%, with a decrease of 41 hundredths as compared with three months ago.

Results by Autonomous Community

The greatest increases in the number of **active persons** this quarter were in Andalucía (60,200), Comunitat Valenciana (44,400) and Comunidad de Madrid (32,600).

The most significant decreases in the number of active persons were in Illes Balears (25,400), País Vasco (10,200) and Principado de Asturias (9,300).

In terms of **employment**, in the fourth quarter of 2008, there were no increases in any Autonomous Community as compared with the previous quarter. The greatest decreases in the number of employed persons were in Cataluña (96,200 more employed persons), Andalucía (85,600) and Illes Balears (39,700).

In the last year, Principado de Asturias was the only Autonomous Community that presented an increase in the number of employed persons (5,200 more). The greatest decreases were in Andalucía (166,500 fewer employed persons), Cataluña (148,300) and Canarias (79,500).

In terms of **unemployment**, the greatest rises this quarter were in Andalucía (145,700), Cataluña (112,100), Comunitat Valenciana (68,900) and Comunidad de Madrid (62,500).

In 2008, the number of unemployed persons increased in all Autonomous Communities. The greatest increases were in Andalucía (326,300 more unemployed persons in the last 12 months), Cataluña (204,000), Comunitat Valenciana (158,500) and Comunidad de Madrid (135,900).

Comunidad Foral de Navarra (8.12%), País Vasco (8.32%) and Cantabria (8.90%) were the Autonomous Communities with the lowest **unemployment rates** in the fourth quarter of 2008. The highest unemployment rates were recorded in Andalucía (21.78%), Canarias (21.18%) and Extremadura (17.96%).

The lowest female unemployment rates were in País Vasco (9.17%), Aragón (9.38%), Comunidad Foral de Navarra (9.53%) and Cantabria (9.54%).

This quarter, Región de Murcia, Cataluña, Illes Balears and Aragón showed an unemployment rate below that of males. These were the Communities with the most similar rates by sex. Conversely, the Autonomous Communities with the most noteworthy differences by sex in the unemployment rate were Extremadura (the female rate was 8.45 points higher than the male rate), Castilla y León (6.24 points higher) and Andalucía (4.94 points).

The Autonomous Communities with the highest **activity rates** in the fourth quarter of 2008 were Comunidad de Madrid (65.09%), Illes Balears (63.79%) and Cataluña (63.34%).

The lowest activity rates this quarter were in Principado de Asturias (52.56%), Extremadura (53.50%) and Castilla y León (54.76%).

Results by province

As of the third quarter³ of 2008, the provincial results that had been provided in this Press Release, appear on the INE website, along with the results tables which are usually published.

This information is available from the EAPS (Provincial Results Summary), at the following link:

<http://www.ine.es/daco/daco42/daco4211/epapro0408.pdf>

All the provincial information from this survey is also available at the following links:

In the INEbase database:

<http://www.ine.es/jaxiBD/menu.do?L=1&divi=EPA&his=0&type=db>

In the TEMPUS database:

<http://www.ine.es/menu/redirect/GSTConsul.shtml?divi=EPA>

For further information see [INEbase-www.ine.es/en/welcome_en.htm](http://www.ine.es/en/welcome_en.htm) All press releases at: www.ine.es/en/prensa/prensa_en.htm

Press office: Telephone: 91 583 93 63 / 94 08 – Fax: 91 583 90 87 - gprensa@ine.es

Information area: Telephone: 91 583 91 00 – Fax: 91 583 91 58 – www.ine.es/infoine

³ By virtue of the *Multilateral Employment Agreement between the Spanish National Statistics Institute (INE) and the central statistical bodies of the Autonomous Communities for bringing about partnership on the subject of statistics*

Methodological note

General characteristics

The Economically Active Population Survey is a continuous, sample-based study, aimed at family dwellings, and which has been conducted since 1964.

3,588 census sections are chosen for this survey, among the more than 30,000 into which Spain is divided. On average, 18 households are surveyed in each of them, except in Barcelona, Madrid, Sevilla, Valencia and Zaragoza, where the number of interviews is 22. Thus, the sample size is approximately 65,000 dwellings, providing information on some 180,000 persons. This data is collected through personal and telephone interviews, conducted by National Statistics Institute interviewers, attached to the provincial delegations thereof. The information is carefully filtered and processed using computer means. Results are obtained within the month after the end of the reference quarter for the data.

Main definitions

Active persons: persons aged 16 or over who, during the reference week (the week prior to that in which the interview is held), supplied labour for the production of economic goods and services, or were available to do so and carried out actions to incorporate themselves into said production. They are divided into employed and unemployed persons.

Employed persons: persons aged 16 or over who, during the reference week, worked for at least one hour, in exchange for payment (salary, wage, business benefit, etc.) in cash or in kind. Persons who, having a job, had been temporarily absent from it due to illnesses, vacation, etc. are also employed persons.

Employed persons are classified, considering their professional status, as non-wage earners (employers, businessmen without wage earners, and independent workers, cooperative members, family assistance) and wage earners (public or private).

Considering the length of the working day, employed persons are classified as full-time and part-time employed persons. The usual working week cannot be shorter than 30 hours in the first case, nor exceed 35 hours in the second.

Wage earners are classified into permanent and temporary. For the latter, the end of their contract or work relationship is set by means of objective conditions, such as the expiry of a certain period of time, the completion of a specific task, etc.

A significant category within employment is that of **time-related underemployment**, defined in the 16th International Labour Statisticians Conference (Geneva, 1998). The EAPS considers persons suffering time-related underemployment as employed persons who would like to work more hours, who are available to work more hours and whose effective working hours in the reference week are less than the number of hours usually worked by employed persons working full-time in the same branch of activity as that in which the underemployed person performs his or her main job.

Unemployed persons: Individuals, aged 16 or over who, during the reference week, were jobless, available for work, and actively looking for a job. Persons who might have already found a job and are waiting to start, are also considered as unemployed, provided that they fulfil the first two conditions.

According to European Commission Regulation 1897/2000, the following are considered as active search methods in the four weeks prior to the interview:

- Being in contact with a public employment office for the purpose of finding work, whatever part they play in the initiative (the renewal of registration due to purely administrative reasons does not constitute active planning).
- Being in contact with a private office (temporary employment office, specialised contracting company, ...) with the objective of finding work.
- Having sent an application directly to employers.
- Having searched via personal relations and trade unions,
- Having advertised oneself or responded to newspaper advertisements.
- Having studied employment offers.
- Having taken part in a test, public exam or interview in the framework of a contracting procedure.
- Having looked for land, premises or material.
- Having taken steps to obtain permits, licences or financial resources.

Inactive persons: Individuals aged 16 or over not included in any of the above categories.

Annex

Note on the use of the new National Classification of Economic Activities NACE-2009 in the encoding of the Economically Active Population Survey (EAPS) since the first quarter of 2008

Adaptation to the European Union new classification of economic activities has led to a new encoding of the variables for the Economically Active Population Survey relating to the branch of activity as of the first quarter of 2008.

The variables affected by this new encoding are as follows:

- Activity of the main job of employed persons
- Activity of the second job (employed persons with more than one job)
- Activity in the last job (unemployed and inactive persons who left their last job less than one year ago)

This implies that several branches of activity have come to form part of different sectors. Thus, to quote a few examples, the "Upkeep of gardens" branch of activity, which was until now classified as part of the agricultural sector, has now become a part of the services sector. The "Development and selling of real estate" branch has gone from the services sector to the construction sector. "Collection and treatment of waste water" has gone from the services sector to industry, and conversely, "Publishing" has gone from industry to services.

At the following link on the INE website, complete information is available regarding all the changes arising from the new encoding of branches of activity:

http://www.ine.es/daco/daco42/clasificaciones/rev.1/correspondencia_cnae.pdf

Origin of the new encoding

The current classification of economic activities for statistical purposes within the European Union, known as NACE Rev.2, was approved by Council and Parliament Regulation No.1893/2006, of 20 December. In order to ensure harmonised implementation of the classification in all Member States, **European Commission Regulation No.973/2007 of 20 August was approved; this stipulated the use of the aforementioned Classification in the Community Labour Force Survey (taken in Spain from the Economically Active Population Survey) beginning in the year 2008.**

The Member States, in order to be able to adapt the European classification to their reality, have compiled national versions which must be compatible with NACE Rev.2. The National Classification of Economic Activities CNAE-2009, approved in Royal Decree 475/2007 of 13 April 2007 (Official Spanish Gazette of 28 April 2007), is the national version of NACE Rev. 2 in Spain.

Therefore, the variables for the Economically Active Population Survey relating to the branch of activity are now encoded in accordance with the new NACE-2009.

Information link

In order to provide sufficient information to link the old classification to the new one, the INE has carried out double-activity encoding over the four quarters of 2008, in order to be able to continue as of 2009 solely with the new classification.

In this way, tables by economic activity may be calculated in accordance with both classifications and have a link year between the two. On the INE website (specifically, in the INEbase database) results have been published from the old and new classifications for the four quarters of 2008.

Similarly, in the EAPS press releases in which information appears by economic sector, both classifications will also be used throughout this year.

Economically Active Population Survey Fourth Quarter 2008

National results

(Continues)

	Current quarter	Variation on previous quarter		Variation on same quarter, previous year	
		Difference	Percentage	Difference	Percentage
1. Population aged 16 years and over by sex and labour status					
BOTH SEXES					
Population aged 16 years and over	38,356.5	85.8	0.22	459.6	1.21
Active population	23,064.7	119.6	0.52	660.2	2.95
- Employed	19,856.8	-489.6	-2.41	-620.1	-3.03
- Unemployed	3,207.9	609.1	23.44	1,280.3	66.42
Inactive	15,291.8	-33.8	-0.22	-200.6	-1.29
Activity rate	60.13	0.18	-	1.01	-
Unemployment rate	13.91	2.58	-	5.30	-
Population aged 16 to 64 years	30,901.4	59.5	0.19	349.8	1.14
Activity rate (16-64)	74.11	0.24	-	1.28	-
Unemployment rate (16-64)	13.99	2.60	-	5.33	-
Employment rate (16-64)	63.75	-1.71	-	-2.78	-
MALES					
Population aged 16 years and over	18,825.3	41.8	0.22	226.9	1.22
Active population	13,029.5	-83.0	-0.63	153.1	1.19
- Employed	11,340.6	-418.3	-3.56	-656.5	-5.47
- Unemployed	1,688.8	335.3	24.77	809.6	92.08
Inactive	5,795.8	124.8	2.20	73.8	1.29
Activity rate	69.21	-0.60	-	-0.02	-
Unemployment rate	12.96	2.64	-	6.13	-
Population aged 16 to 64 years	15,636.2	29.6	0.19	175.7	1.14
Activity rate (16-64)	82.72	-0.66	-	0.11	-
Unemployment rate (16-64)	13.04	2.65	-	6.16	-
Employment rate (16-64)	71.93	-2.78	-	-5.00	-
FEMALES					
Population aged 16 years and over	19,531.2	44.0	0.23	232.7	1.21
Active population	10,035.2	202.6	2.06	507.1	5.32
- Employed	8,516.2	-71.3	-0.83	36.4	0.43
- Unemployed	1,519.0	273.8	21.99	470.7	44.90
Inactive	9,496.0	-158.6	-1.64	-274.4	-2.81
Activity rate	51.38	0.92	-	2.01	-
Unemployment rate	15.14	2.47	-	4.13	-
Population aged 16 to 64 years	15,265.2	29.9	0.20	174.1	1.15
Activity rate (16-64)	65.29	1.17	-	2.47	-
Unemployment rate (16-64)	15.21	2.50	-	4.16	-
Employment rate (16-64)	55.36	-0.61	-	-0.52	-
2. Spanish population¹ aged 16 years and over by labour status					
SPANISH POPULATION AGED 16 YEARS AND OVER					
	33,614.4	20.6	0.06	91.4	0.27
Active population	19,398.7	24.6	0.13	289.0	1.51
- Employed	16,970.3	-428.2	-2.46	-619.6	-3.52
- Unemployed	2,428.4	452.8	22.92	908.6	59.78
Inactive	14,215.7	-4.1	-0.03	-197.7	-1.37
Activity rate	57.71	0.04	-	0.70	-
Unemployment rate	12.52	2.32	-	4.57	-

¹ including dual nationality

National results

(Continuation)

	Current quarter	Variation on previous quarter		Variation on same quarter, previous year	
		Difference	Percentage	Difference	Percentage
3. Foreign population aged 16 years and over by labour status					
FOREIGN POPULATION AGED 16 YEARS AND OVER	4,742.1	65.2	1.39	368.3	8.42
Active population	3,665.9	94.9	2.66	371.2	11.27
- Employed	2,886.5	-61.4	-2.08	-0.6	-0.02
- Unemployed	779.4	156.3	25.09	371.7	91.18
Inactive	1,076.1	-29.7	-2.69	-2.9	-0.27
Activity rate	77.31	0.95	-	1.98	-
Unemployment rate	21.26	3.81	-	8.89	-
4. Employed by sex, age group and economic sector					
BOTH SEXES	19,856.8	-489.6	-2.41	-620.1	-3.03
16 to 19 years	265.1	-101.6	-27.70	-91.6	-25.69
20 to 24 years	1,398.9	-151.6	-9.78	-178.3	-11.30
25 to 29 years	2,570.7	-86.9	-3.27	-247.5	-8.78
30 to 34 years	3,109.0	-81.9	-2.57	-136.9	-4.22
35 to 39 years	2,949.2	-37.5	-1.26	-72.3	-2.39
40 to 44 years	2,743.9	-19.9	-0.72	-30.1	-1.09
45 to 49 years	2,460.5	-24.9	-1.00	24.7	1.02
50 to 54 years	1,968.1	8.2	0.42	32.9	1.70
55 and over	2,391.3	6.6	0.28	78.9	3.41
MALES	11,340.6	-418.3	-3.56	-656.5	-5.47
16 to 19 years	154.6	-66.8	-30.17	-72.2	-31.84
20 to 24 years	750.4	-97.2	-11.47	-130.8	-14.84
25 to 29 years	1,353.0	-71.9	-5.04	-205.8	-13.20
30 to 34 years	1,754.3	-55.3	-3.05	-106.8	-5.74
35 to 39 years	1,681.4	-43.2	-2.50	-77.0	-4.38
40 to 44 years	1,562.7	-28.3	-1.78	-57.4	-3.54
45 to 49 years	1,392.8	-26.1	-1.84	-21.8	-1.54
50 to 54 years	1,160.3	-14.7	-1.25	-4.9	-0.42
55 and over	1,531.0	-14.9	-0.97	20.1	1.33
FEMALES	8,516.2	-71.3	-0.83	36.4	0.43
16 to 19 years	110.4	-34.8	-23.94	-19.4	-14.94
20 to 24 years	648.5	-54.4	-7.74	-47.5	-6.82
25 to 29 years	1,217.7	-15.0	-1.22	-41.7	-3.31
30 to 34 years	1,354.7	-26.6	-1.93	-30.1	-2.18
35 to 39 years	1,267.8	5.7	0.45	4.7	0.37
40 to 44 years	1,181.3	8.4	0.71	27.2	2.36
45 to 49 years	1,067.7	1.2	0.11	46.5	4.55
50 to 54 years	807.8	22.9	2.91	37.8	4.91
55 and over	860.3	21.5	2.56	58.8	7.34
TOTAL EMPLOYED	19,856.8	-489.6	-2.41	-620.1	-3.03
Agriculture NACE rev1	863.4	14.4	1.70	-42.4	-4.68
Industry NACE rev1	3,059.6	-168.1	-5.21	-219.5	-6.69
Construction NACE rev1	2,135.0	-228.2	-9.66	-558.5	-20.73
Services NACE rev1	13,798.7	-107.7	-0.77	200.2	1.47
TOTAL EMPLOYED	19,856.8	-489.6	-2.41	-620.1	-3.03
Agriculture NACE rev2	803.8	16.5	2.09		
Industry NACE rev2	3,042.7	-152.5	-4.77		
Construction NACE rev2	2,180.7	-232.5	-9.63		
Services NACE rev2	13,829.6	-121.1	-0.87		

National results

(Continuation)

	Current quarter	Variation on previous quarter		Variation on same quarter, previous year	
		Difference	Percentage	Difference	Percentage

5. Employed by professional status, type of contract and working hours

TOTAL EMPLOYED	19,856.8	-489.6	-2.41	-620.1	-3.03
Self-employed workers	3,535.0	-49.8	-1.39	-58.2	-1.62
- Employers	1,165.3	-16.1	-1.37	29.0	2.55
- Independent workers	2,110.3	-8.7	-0.41	-75.7	-3.46
- Cooperatives members	62.4	-1.9	-2.92	-6.2	-9.07
- Family workers	197.0	-23.1	-10.51	-5.2	-2.59
Employees	16,308.2	-438.0	-2.62	-568.4	-3.37
- With a permanent job	11,753.9	-47.5	-0.40	95.7	0.82
- With a temporary job	4,554.3	-390.5	-7.90	-664.1	-12.73
Others	13.6	-1.8	-11.60	6.4	90.14
FULL-TIME EMPLOYED	17,377.8	-644.7	-3.58	-716.0	-3.96
Males	10,845.4	-432.3	-3.83	-685.4	-5.94
Females	6,532.4	-212.4	-3.15	-30.6	-0.47
PART-TIME EMPLOYED	2,479.0	155.1	6.68	95.9	4.02
Males	495.2	14.0	2.91	28.9	6.21
Females	1,983.8	141.1	7.66	66.9	3.49

6. Unemployed by sex, age group, and economic sector

BOTH SEXES	3,207.9	609.1	23.44	1,280.3	66.42
16 to 19 years	223.9	-3.7	-1.63	61.1	37.52
20 to 24 years	461.0	75.6	19.61	176.2	61.87
25 to 54 years	2,301.1	488.8	26.97	960.5	71.65
55 and over	221.9	48.4	27.93	82.5	59.19
MALES	1,688.8	335.3	24.77	809.6	92.08
16 to 19 years	124.4	3.9	3.27	40.9	49.03
20 to 24 years	256.7	46.2	21.95	121.8	90.30
25 to 54 years	1,187.8	264.8	28.69	604.6	103.68
55 and over	120.0	20.4	20.43	42.2	54.34
FEMALES	1,519.0	273.8	21.99	470.7	44.90
16 to 19 years	99.5	-7.6	-7.14	20.2	25.41
20 to 24 years	204.4	29.4	16.80	54.4	36.29
25 to 54 years	1,113.3	224.0	25.19	355.9	46.99
55 and over	101.9	28.1	38.05	40.2	65.31
TOTAL UNEMPLOYED	3,207.9	609.1	23.44	1,280.3	66.42
Agriculture NACE rev1	155.3	3.4	2.22	35.0	29.07
Industry NACE rev1	292.4	80.2	37.77	155.5	113.58
Construction NACE rev1	576.6	143.4	33.09	358.9	164.87
Services NACE rev1	1,145.2	210.7	22.55	393.9	52.43
Lost their job more than 1 year ago	789.1	179.6	29.46	273.3	52.98
First job seekers	249.3	-8.1	-3.13	63.6	34.29
TOTAL UNEMPLOYED	3,207.9	609.1	23.44	1,280.3	66.42
Agriculture NACE rev2	149.1	4.0	2.76		
Industry NACE rev2	288.0	79.8	38.35		
Construction NACE rev2	584.9	145.2	33.01		
Services NACE rev2	1,147.5	208.6	22.22		
Lost their job more than 1 year ago	789.1	179.6	29.46	273.3	52.98
First job seekers	249.3	-8.1	-3.13	63.6	34.29

National results

(Conclusion)

	Current quarter	Variation on previous quarter		Variation on same quarter, previous year	
		Difference	Percentage	Difference	Percentage

7. Unemployment rate by relationship with the reference person

TOTAL	13.91	2.58	-	5.30	-
Reference person	11.18	2.47	-	4.73	-
Spouse or partner	11.90	2.17	-	4.28	-
Child	21.81	3.90	-	7.94	-
Other relatives	19.45	2.71	-	7.73	-
Unrelated persons	14.26	1.56	-	6.86	-

8. Household data

TOTAL HOUSEHOLDS	16,895.9	91.0	0.54	447.5	2.72
Households with at least one active member	12,790.6	87.2	0.69	387.3	3.12
- All member employed	10,099.1	-384.7	-3.67	-596.3	-5.58
- All member unemployed	827.2	189.1	29.63	385.5	87.28
Households without any active population	4,105.4	3.8	0.09	60.2	1.49

Mobility according to activity in current and previous quarter

Classification in previous quarter	Classification in current quarter			
	Total	Employed	Unemployed	Inactive
BOTH SEXES				
Total	100.00	100.00	100.00	100.00
Employed	52.91	93.14	32.01	5.46
Unemployed	6.65	3.57	44.19	3.02
Inactive	40.44	3.30	23.80	91.52
MALES				
Total	100.00	100.00	100.00	100.00
Employed	62.64	94.99	37.57	6.67
Unemployed	7.01	3.23	47.52	3.19
Inactive	30.35	1.78	14.91	90.14
FEMALES				
Total	100.00	100.00	100.00	100.00
Employed	43.61	90.66	26.10	4.73
Unemployed	6.30	4.01	40.66	2.91
Inactive	50.09	5.32	33.24	92.36

Grossing up factors of current quarter (forward analysis)

Results by Autonomous Communities

(Continues)

	Current quarter	Variation on previous quarter		Variation on same quarter, previous year	
		Difference	Percentage	Difference	Percentage
1. Population aged 16 years and over					
TOTAL	38,356.5	85.8	0.22	459.6	1.21
Andalucía	6,690.4	18.1	0.27	90.4	1.37
Aragón	1,115.2	2.5	0.23	13.1	1.18
Asturias (Principado de)	935.6	-0.4	-0.04	-1.3	-0.14
Balears (Illes)	884.3	4.8	0.55	22.7	2.63
Canarias	1,723.2	6.9	0.40	34.3	2.03
Cantabria	494.5	0.9	0.18	4.2	0.85
Castilla y León	2,166.5	1.3	0.06	7.2	0.33
Castilla-La Mancha	1,684.0	8.7	0.52	39.2	2.38
Cataluña	6,085.4	3.1	0.05	36.3	0.60
Comunitat Valenciana	4,172.2	15.6	0.38	85.3	2.09
Extremadura	903.3	0.6	0.07	3.1	0.34
Galicia	2,388.4	0.1	0.00	3.8	0.16
Madrid (Comunidad de)	5,227.2	18.9	0.36	89.5	1.74
Murcia (Región de)	1,171.4	4.6	0.39	26.9	2.35
Navarra (Comunidad Foral de)	509.5	1.5	0.29	6.3	1.25
País Vasco	1,829.6	-2.2	-0.12	-4.5	-0.25
Rioja (La)	266.4	0.6	0.24	2.7	1.03
Ceuta	56.9	0.1	0.16	0.5	0.87
Melilla	52.5	0.3	0.54	0.2	0.38

2. Active population

TOTAL	23,064.7	119.6	0.52	660.2	2.95
Andalucía	3,904.7	60.2	1.56	159.8	4.27
Aragón	664.5	5.2	0.79	15.0	2.31
Asturias (Principado de)	491.8	-9.3	-1.85	15.4	3.24
Balears (Illes)	564.1	-25.4	-4.32	20.1	3.69
Canarias	1,055.5	10.0	0.96	31.2	3.04
Cantabria	281.5	-0.5	-0.18	5.1	1.86
Castilla y León	1,186.3	-3.3	-0.28	23.9	2.06
Castilla-La Mancha	965.5	8.4	0.88	40.1	4.34
Cataluña	3,854.8	15.9	0.41	55.7	1.47
Comunitat Valenciana	2,569.8	44.4	1.76	97.5	3.94
Extremadura	483.3	-4.1	-0.85	2.4	0.49
Galicia	1,324.1	-2.9	-0.22	31.4	2.43
Madrid (Comunidad de)	3,402.2	32.6	0.97	119.1	3.63
Murcia (Región de)	725.2	4.0	0.55	32.1	4.64
Navarra (Comunidad Foral de)	309.0	-3.4	-1.08	5.5	1.81
País Vasco	1,063.9	-10.2	-0.95	4.6	0.44
Rioja (La)	160.1	-0.2	-0.12	2.4	1.50
Ceuta	32.6	1.4	4.37	2.2	7.33
Melilla	25.7	-3.1	-10.89	-3.4	-11.77

* Data below 5000 are subject to strong variations, due to sampling error

Results by Autonomous Communities

(Conclusion)

	Current quarter	Variation on previous quarter		Variation on same quarter, previous year	
		Difference	Percentage	Difference	Percentage
3. Employed					
TOTAL	19,856.8	-489.6	-2.41	-620.1	-3.03
Andalucía	3,054.4	-85.6	-2.73	-166.5	-5.17
Aragón	601.0	-17.3	-2.79	-15.5	-2.51
Asturias (Principado de)	442.8	-20.5	-4.42	5.2	1.19
Balears (Illes)	494.6	-39.7	-7.43	-0.4	-0.09
Canarias	832.0	-30.5	-3.54	-79.5	-8.73
Cantabria	256.4	-7.7	-2.91	-7.1	-2.70
Castilla y León	1,053.3	-25.1	-2.33	-27.8	-2.58
Castilla-La Mancha	821.6	-27.0	-3.18	-30.2	-3.54
Cataluña	3,399.0	-96.2	-2.75	-148.3	-4.18
Comunitat Valenciana	2,188.1	-24.5	-1.11	-61.0	-2.71
Extremadura	396.5	-19.8	-4.75	-13.9	-3.40
Galicia	1,195.1	-19.4	-1.60	-1.0	-0.09
Madrid (Comunidad de)	3,057.0	-29.9	-0.97	-16.8	-0.55
Murcia (Región de)	612.6	-7.0	-1.13	-23.1	-3.64
Navarra (Comunidad Foral de)	283.9	-6.3	-2.18	-6.6	-2.28
País Vasco	975.4	-31.5	-3.12	-23.2	-2.32
Rioja (La)	144.5	-2.5	-1.68	-4.4	-2.93
Ceuta	27.3	1.4	5.59	2.7	11.09
Melilla	21.4	-0.6	-2.83	-2.7	-11.08

4. Unemployed

TOTAL	3,207.9	609.1	23.44	1,280.3	66.42
Andalucía	850.3	145.7	20.68	326.3	62.26
Aragón	63.6	22.5	54.76	30.5	92.15
Asturias (Principado de)	48.9	11.2	29.64	10.2	26.42
Balears (Illes)	69.5	14.2	25.75	20.5	41.84
Canarias	223.6	40.6	22.17	110.7	98.13
Cantabria	25.1	7.2	40.13	12.3	95.69
Castilla y León	133.1	21.8	19.63	51.8	63.68
Castilla-La Mancha	143.9	35.4	32.63	70.3	95.50
Cataluña	455.8	112.1	32.62	204.0	81.02
Comunitat Valenciana	381.7	68.9	22.02	158.5	70.99
Extremadura	86.8	15.6	21.96	16.3	23.15
Galicia	129.0	16.5	14.72	32.5	33.65
Madrid (Comunidad de)	345.3	62.5	22.11	135.9	64.90
Murcia (Región de)	112.6	11.0	10.83	55.3	96.38
Navarra (Comunidad Foral de)	25.1	2.9	13.28	12.1	93.63
País Vasco	88.6	21.2	31.52	27.8	45.81
Rioja (La)	15.6	2.3	17.06	6.7	75.74
Ceuta	5.3	-0.1	-1.48	-0.5	-8.52
Melilla	4.3	-2.5	-36.76	-0.8	-15.04

* Data below 5,000 are subject to strong variations, due to sampling error

(:) The variation percentages calculated from low figures with high sampling errors are not significant

Results by Autonomous Communities

5. Employed and unemployed by sex. Activity and unemployment rates.

(Absolute figures in thousands and rates in percentage)

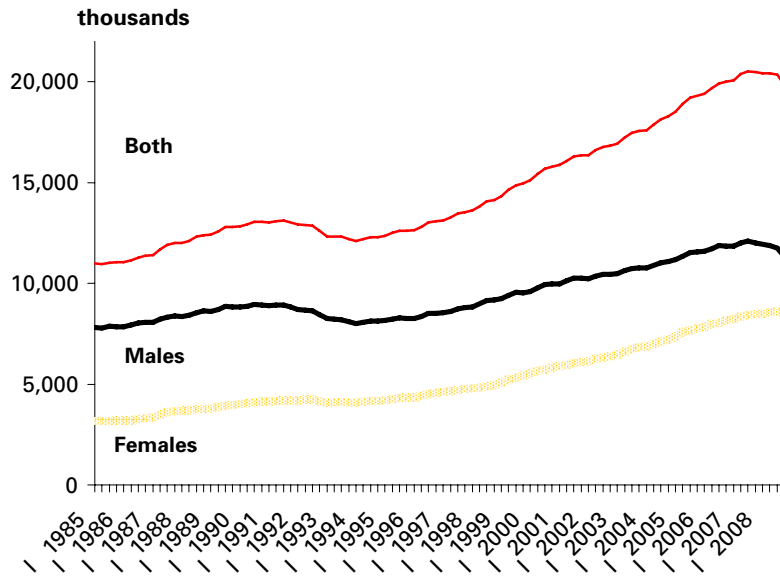
	Both sexes				Males				Females			
	Employed	Unemployed	Activity rate	Unem. rate	Employed	Unemployed	Activity rate	Unem. Rate	Employed	Unemployed	Activity rate	Unem. Rate
TOTAL	19,856.8	3,207.9	60.13	13.91	11,340.6	1,688.8	69.21	12.96	8,516.2	1,519.0	51.38	15.14
Andalucía	3,054.4	850.3	58.36	21.78	1,818.2	446.2	68.77	19.70	1,236.2	404.2	48.28	24.64
Aragón	601.0	63.6	59.59	9.57	342.3	36.8	68.34	9.71	258.6	26.8	50.93	9.38
Asturias	442.8	48.9	52.56	9.95	246.4	21.4	60.31	7.99	196.4	27.5	45.56	12.29
Balears (Illes)	494.6	69.5	63.79	12.32	277.9	40.0	71.93	12.57	216.7	29.5	55.66	12.00
Canarias	832.0	223.6	61.25	21.18	490.0	115.2	70.56	19.03	341.9	108.4	52.02	24.06
Cantabria	256.4	25.1	56.92	8.90	145.8	13.4	66.19	8.42	110.7	11.7	48.15	9.54
Castilla y Leon	1,053.3	133.1	54.76	11.22	624.5	58.5	63.86	8.57	428.8	74.5	45.88	14.81
Castilla-La Mancha	821.6	143.9	57.33	14.90	505.2	76.7	68.68	13.18	316.4	67.2	45.85	17.52
Cataluña	3,399.0	455.8	63.34	11.82	1,888.4	261.5	71.91	12.16	1,510.6	194.3	55.07	11.40
Comunitat Valenciana	2,188.1	381.7	61.59	14.85	1,249.5	202.7	70.26	13.96	938.6	179.0	53.09	16.02
Extremadura	396.5	86.8	53.50	17.96	245.6	41.8	64.47	14.53	150.9	45.0	42.82	22.98
Galicia	1,195.1	129.0	55.44	9.74	659.1	63.3	63.31	8.77	536.0	65.7	48.23	10.91
Madrid (Comunid.de)	3,057.0	345.3	65.09	10.15	1,662.4	173.6	73.01	9.46	1,394.5	171.7	57.74	10.96
Murcia (Región de)	612.6	112.6	61.91	15.53	361.1	68.3	72.54	15.90	251.5	44.3	51.05	14.98
Navarra (C. Foral de)	283.9	25.1	60.65	8.12	163.0	12.3	69.27	7.04	120.9	12.7	52.14	9.53
País Vasco	975.4	88.6	58.15	8.32	544.1	45.0	66.44	7.64	431.3	43.5	50.36	9.17
Rioja (La)	144.5	15.6	60.09	9.75	85.2	7.9	69.63	8.50	59.3	7.7	50.49	11.50
Ceuta	27.3	5.3	57.32	16.32	17.9	1.8	68.67	9.34	9.4	3.5	45.77	26.99
Melilla	21.4	4.3	49.02	16.87	14.0	2.4	66.03	14.85	7.4	1.9	33.64	20.46

* Data below 5,000 are subject to strong variations, due to sampling errors

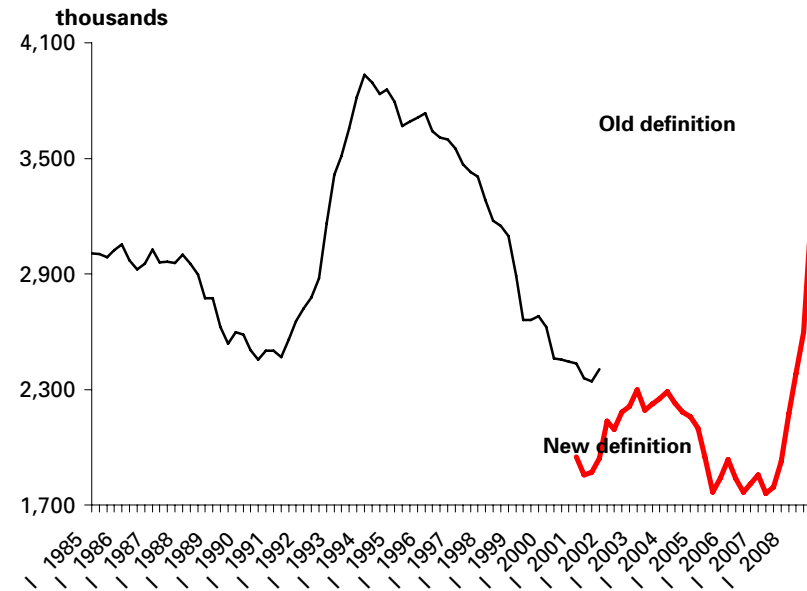
Employed and unemployed by sex

APS Fourth Quarter 2008

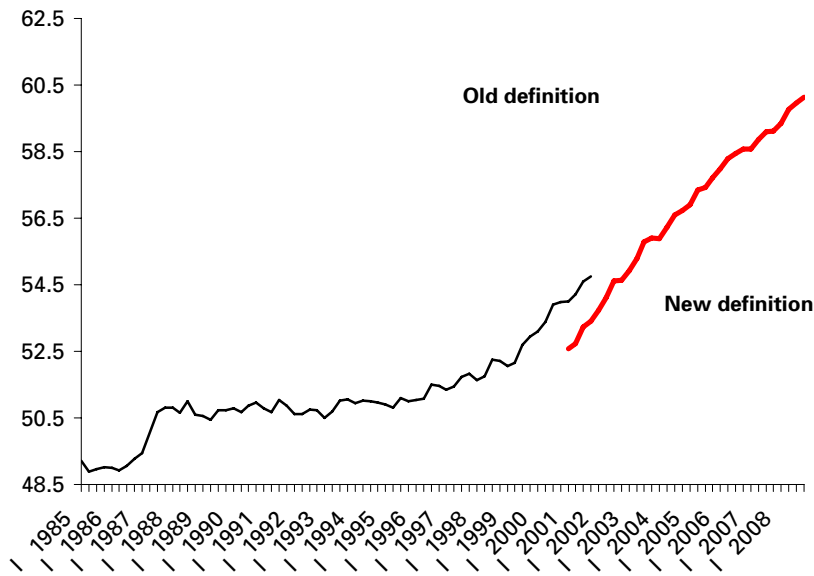
Employment



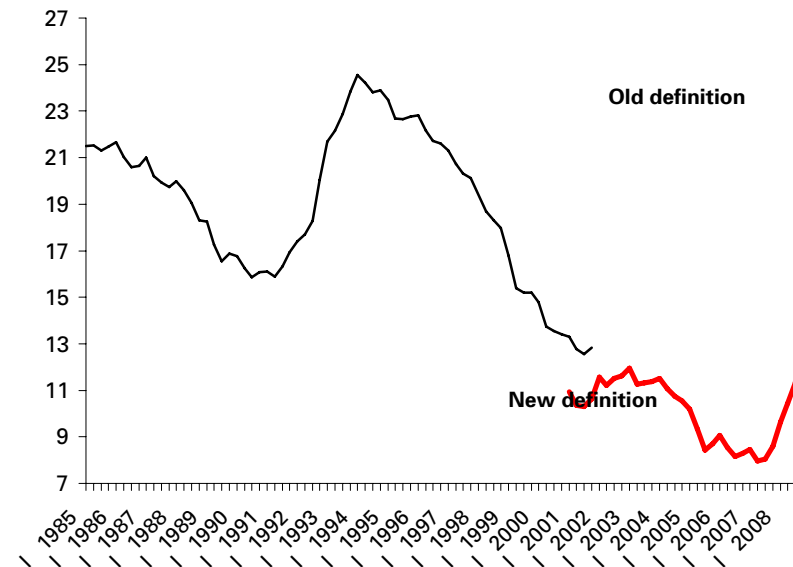
Unemployment



Activity rate



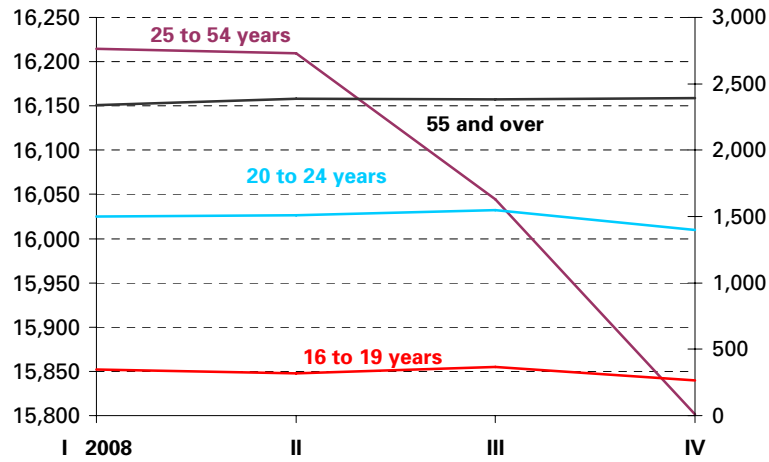
Unemployment rate



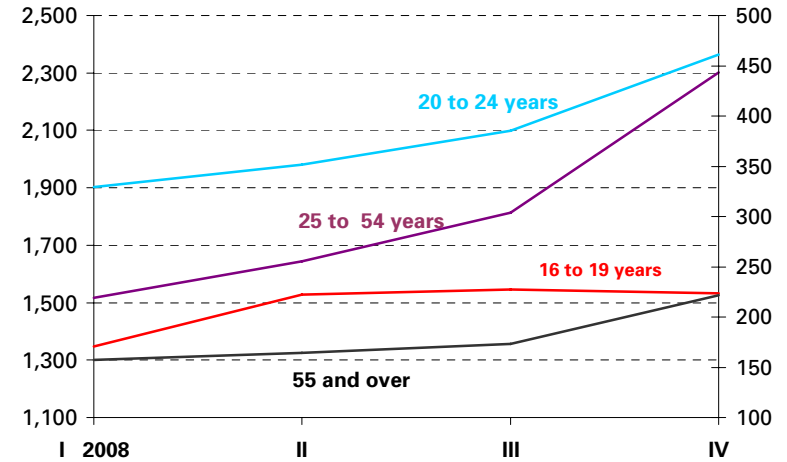
Employed and Unemployed by age

APS Fourth Quarter 2008

Employment

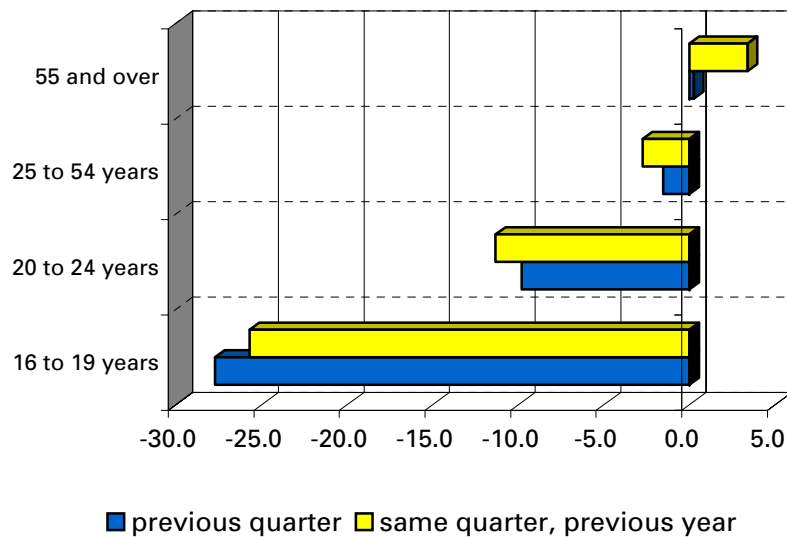


Unemployment

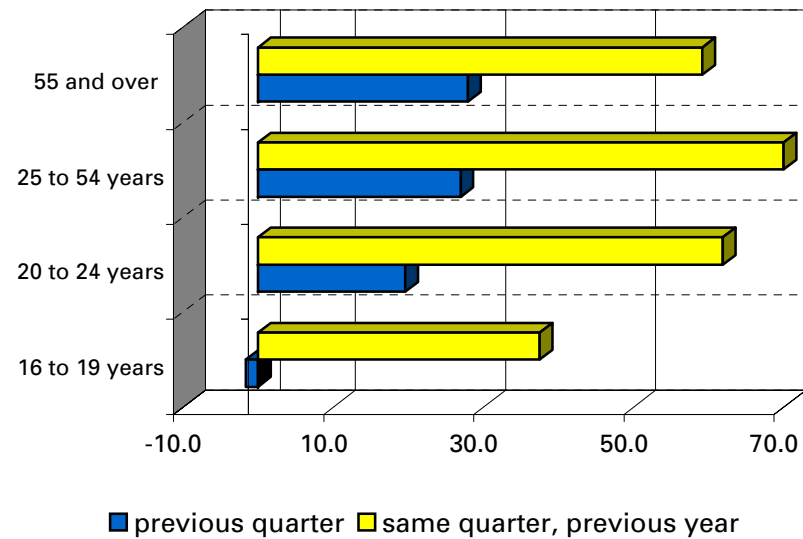


Variation percentages over the previous quarter and over the same quarter of the previous year

Employment

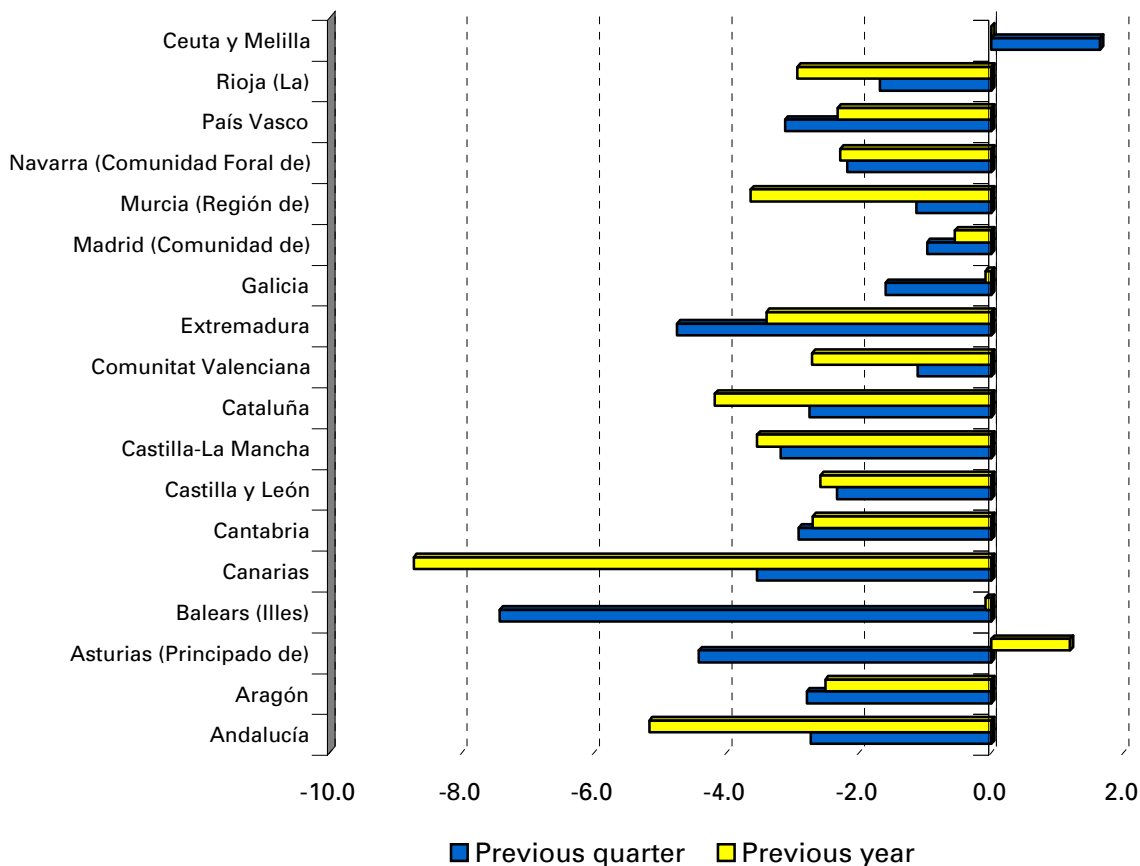


Unemployment



Employment variation percentages over the previous quarter and over the same quarter of the previous year

Fourth Quarter 2008



Unemployment rate (Spain = 13.91)

