

27 January 2012

## Economically Active Population Survey (EAPS)

Fourth quarter of 2011

### Main results

- Employment in the fourth quarter of 2011 registers a decrease of 348,700 persons, reaching a total of 17,807,500 employed persons. The interannual employment variation rate stands at -3.26%.
- The economically active population drops by 53,400 persons. The number of unemployed persons increases by 295,300 persons, the figure thus standing at 5,273,600.
- The unemployment rate increases in 1.33 points, now standing at 22.85%. In turn, the activity rate stands at 59.94%.
- By sex, both the decrease in employment and the increase in unemployment are more substantial for men than for women.
- Employment decreases in *Services, Construction and Industry*, and increases in *Agriculture*.
- The total number of wage earners with a permanent contract drops by 104,200, while that of wage earners with temporary contract drops by 246,000.
- The number of households with all of their active members unemployed increases by 149,800 this quarter, standing at 1,575,000.
- By Autonomous Community, the unemployment rate fluctuates between 12.61% in País Vasco and 31.23% in Andalucía. The activity rate fluctuates between the 51.74% recorded in Principado de Asturias, and 64.36% in Illes Balears.
- This quarter, employment registers its greatest decrease and unemployment experiences its greatest increase in Comunidad de Madrid, Cataluña, and Illes Balears.

## **Economically active population and activity rate**

The economically active population experienced a decrease of 53,400 persons in the fourth quarter of 2011. The number of economically active persons stood at 23,081,200 persons. In interannual terms, the number of economically active persons decreased by 23,600 persons.

The general activity rate fell 17 hundredths regarding the third quarter, standing at 59.94%. The female activity rate remained at 52.93%, while the male rate decreased 34 hundredths, up to 67.30%.

The distance between the activity rates of Spaniards and foreign nationals exceeded 18 points, in favour of the latter, this circumstance being largely explained by the different age structures of both populations.

## **Employment**

The number of employed persons decreased by 348,700 persons in the fourth quarter of 2011, standing at 17,807,500.

The drop in employment affected men (228,400 fewer unemployed men) more than women (120,300 less). The number of employed foreign nationals decreased by 79,400, and that of Spaniards did so by 269,300.

By age, employment grew among persons aged over 44 years old, mainly due to the increase in employment of women aged between 45 to 54 years old. In contrast, all groups of persons aged below 45 years old registered decreases in employment.

The number of employed persons increased in *Agriculture* (100,800 more) and drop in *Services* (305,700 employment less), in *Construction* (93,900) and in *Industry* (50,000 less).

The number of wage earners decreased by 350,200. Those with a permanent contract decreased by 104,200, while the number of wage earners with temporary contracts decreased 246,000. The temporary employment rate decreased more than one point, standing at 24.98%.

Part-time employment increased by 60,000 persons this quarter, whilst full-time employed persons decreased by 408,700. The percentage of persons working part-time increased 6 tenths, up to 13.81%.

The interannual variation of employment was -3.26%, that is, more than one point below that recorded the previous quarter. Employment experienced a decrease of 600,600 persons in one year, 485,000 of whom were wage earners, and 115,500 of whom were self-employed workers.

The interannual decrease in employment among men (404,000 fewer employed men) was much greater than the decrease in employment among women (196,600).

## **Unemployment and unemployment rate**

Unemployment increased by 295,300 persons this quarter, standing at 5,273,600. In the last 12 months, the total figure for unemployed persons increased by 577,000.

The unemployment rate rose 1.33 points, as compared with the third quarter of the year, reaching 22.85%.

The increase in unemployment was reflected to a greater extent in men (166,100 more unemployed men) than in women (129,200 more).

The male unemployment rate increased 1.42 points, up to 22.46%, whilst the female rate increased 1.22 points and stood at 23.32%. The composition of unemployment observed since the year 2008 remained, with relatively little distance between the male and female rates, and a greater number of unemployed men than unemployed women.

By nationality, the increase in unemployment was 223,800 more unemployed Spaniards, against 79,400 more unemployed foreign nationals. The unemployment rate for the foreign population reached 34.82%, and was more than 14 points higher than that of persons with Spanish nationality.

Unemployment decreased in *Agriculture* (42,300 fewer unemployed persons) and *Construction* (2,900). In contrast, unemployment grew in *Industry* (29,100 more) and *Service* (124,500 more). Unemployment also increased among persons who lost their jobs more than one year ago by 201,900 this quarter, and among those seeking their first job, by 15,000.

### **Mobility as related to economic activity**

The percentage of employed persons who were inactive in the previous quarter is now 4.75%, 31 hundredths less than that recorded in the third quarter.

The proportion of unemployed persons who were employed three months ago increased 1.54 points. The percentage of unemployed persons for the fourth quarter of the year who were already unemployed three months prior increased 81 hundredths, up to 64.22%. The percentage of unemployed persons who were inactive three months ago decreased 2.37 points.

### **Households**

The number of households in which all active members were unemployed experienced an increase of 149,800 in the fourth quarter of 2011, standing at 1,575,000. In parallel, the number of households in which all of the active members were employed decreased by 212,300, up to 8,846,100.

In an interannual comparison, the number of households in which all active persons were unemployed increased by 247,000, and the number of those in which all active members were employed decreased by 374,600.

### **Results by Autonomous Community**

The incorporation of economically active persons in the labour market was especially significant this quarter in Comunitat Valenciana (23,700) and Andalucía (12,400). In contrast, in Cataluña and Illes Balears was observed the greatest decreases (more than 34,000 in both cases) in the number of active persons.

In the last 12 months, the number of active persons has grown by 21,600 persons in Andalucía, by 19,900 in Canarias, by 16,700 in Galicia and by 14,000 in Castilla-La Mancha, while it decreased by 73,600 in Comunidad de Madrid and by 38,100 in Cataluña.

The greatest decreases in employment for this quarter were in Illes Balears (71,000 more) Cataluña (68,900) and Comunidad de Madrid (52,300).

The most pronounced drops in employment in the last 12 months, were recorded in Comunidad de Madrid (155,000 fewer employed persons), Cataluña (126,700) and Andalucía (99,500).

Regarding unemployment, the greatest increases this quarter were registered in Comunidad de Madrid (50,300 unemployment more), Illes Balears (36,900) and Cataluña (33,400).

In turn, the Autonomous Communities that presented the greatest interannual increases in unemployment were Andalucía (121,100 fewer unemployed persons), Cataluña (88,700) and Comunidad de Madrid (81,300).

País Vasco and Comunidad Foral de Navarra had unemployment rates under 14%. At the opposite end of the spectrum, Canarias and Andalucía presented rates above 30%.

The economic activity rates fluctuated this quarter between the 64.36% recorded in Illes Balears, and the 51.74% registered in Principado de Asturias.

## Results by province

The provincial results summary of the EAPS may be accessed via the following link:

[http://www.ine.es/en/daco/daco42/daco4211/epapro0411\\_en.pdf](http://www.ine.es/en/daco/daco42/daco4211/epapro0411_en.pdf)

All of the provincial information from this survey may be accessed via the following links:

- In the INEbase database  
<http://www.ine.es/jaxiBD/menu.do?L=1&divi=EPA&his=0&type=db>
- In the TEMPUS database  
<http://www.ine.es/GSTConsul/arbolAction.do?divi=EPA>

---

For further information see [INEbase-www.ine.es/en/welcome\\_en.htm](http://www.ine.es/en/welcome_en.htm) All press releases at: [www.ine.es/en/prensa/prensa\\_en.htm](http://www.ine.es/en/prensa/prensa_en.htm)

**Press Office:** Telephone numbers: 91 583 93 63 / 94 08 – Fax: 91 583 90 87 - [gprensa@ine.es](mailto:gprensa@ine.es)

**Information Area:** Telephone number: 91 583 91 00 – Fax: 91 583 91 58 – [www.ine.es/infoine/?L=1](http://www.ine.es/infoine/?L=1)

---

## Methodological note

### General features

The Economically Active Population Survey (EAPS) is a continuous sample-based study aimed at family dwellings, and which has been conducted since 1964.

The additional sample collected by the *Galician Statistics Institute* (IGE) has been incorporated as of the third quarter of 2009, using the same fieldwork system and identical methodology to that of the INE. Therefore, apart from the 3,588 census sections that have made up the sample for the whole of Spain since 2005, we must take into account the 234 additional sections in the Autonomous Community of Galicia. Since the third quarter of 2009, the EAPS sample is made up of 3,822 census sections from the more than 30,000 census sections into which Spain is divided. An average of 18 households are surveyed in each one, except in the provinces of Barcelona, Madrid, Sevilla, Valencia and Zaragoza, where the number of households surveyed is 22. Thus, the sample size is approximately 65,000 dwellings, providing information on some 180,000 persons. The data is collected via personal and telephone interviews. The information is carefully filtered and computer-processed. Results are obtained within the month following the end of the reference quarter for the data.

As of the first quarter of 2011, occupation is encoded following the new 2011 National Classification of Occupations. A dual encoding of said variable has been carried out during the four quarters of 2010, with the old and the new classifications, from which, dual results have been published for that year (see the Detailed Results of the EAPS section, <http://www.ine.es/jaxiBD/menu.do?L=1&divi=EPA&his=1&type=db>). An equivalence matrix has also been calculated between the two classifications ([http://www.ine.es/jaxi/menu.do?type=pcaxis&path=/t22/e308\\_mnu&file=inebase&N=&L=1](http://www.ine.es/jaxi/menu.do?type=pcaxis&path=/t22/e308_mnu&file=inebase&N=&L=1), apartado Análisis y estudios), for the purpose of enabling the link in the employment series.

### Main definitions

**Active persons:** persons aged 16 years old and over who, during the reference week (the week prior to that when the interview is held), supplied labour for the production of goods and services, or were available to do so and in conditions to incorporate themselves into said production. They are divided into employed and unemployed persons.

**Employed persons:** persons aged 16 years old and over who, during the reference week, worked for at least one hour in exchange for payment (salary, wage, business benefit, etc.) in cash or in kind. Persons who, being employed, had been temporarily absent from their job due to illness, holidays, etc., are also considered employed persons.

Employed persons are classified, considering their professional status, as non-wage earners (employers, businesspersons without wage earners and independent workers, cooperative members, family assistance) and wage earners (public or private).

Considering the length of the working day, employed persons are classified as full-time and part-time employed persons. The usual working week may not be shorter than 30 hours in the first case, nor exceed 35 hours in the second.

Wage earners are classified as permanent and temporary. For the latter, the end of their contract or work relationship is set by means of objective conditions, such as the expiry of a certain period of time, the completion of a specific task, etc.

A significant category within employment is that of **time-related underemployment**, defined in the 16th International Labour Statisticians Conference (Geneva, 1998). The EAPS considers persons suffering time-related underemployment as employed persons who would like to work more hours, who are available to work more hours and whose effective working hours in the reference week are less than the number of hours usually worked by employed persons working full-time in the same branch of activity as that in which the underemployed person develops his/her main job.

**Unemployed persons:** persons aged 16 years old and over who, during the reference week, were jobless, available for work, and actively looking for a job. Persons who might have already found a job and are waiting to start are also considered to be unemployed, provided that they meet the first two conditions.

According to European Commission Regulation 1897/2000, the following are considered to be active search methods, in the four weeks prior to the interview:

- Being in contact with a public employment office for the purpose of finding work, whatever part they play in the initiative (the renewal of registration due to purely administrative reasons does not constitute active planning).
- Being in contact with a private office (temporary employment agency, specialised hiring agency, etc.) with the objective of finding work.
- Having sent an application directly to employers.
- Having searched via personal relations and trade unions, etc.
- Having advertised oneself or responded to newspaper advertisements.
- Having studied job vacancies.
- Having taken part in a test, public exam or interview in the framework of a contracting procedure.
- Having looked for land, premises or material.
- Having taken steps to obtain permits, licences or financial resources.

**Inactive population:** persons aged 16 years old and over not included in any of the above categories.

## Economically Active Population Survey Fourth Quarter 2011

### National results

(Continues<sup>1</sup>)

	Current quarter	Variation on previous quarter		Variation on same quarter, previous year	
		Difference	Percentage	Difference	Percentage
<b>1. Population aged 16 years and over by sex and labour status</b>					
BOTH SEXES					
<b>Population aged 16 years and over</b>	38,508.2	20.4	0.05	-4.3	-0.01
Active population	23,081.2	-53.4	-0.23	-23.6	-0.10
- Employed	17,807.5	-348.7	-1.92	-600.6	-3.26
- Unemployed	5,273.6	295.3	5.93	577.0	12.29
Inactive	15,427.0	73.8	0.48	19.4	0.13
Activity rate	59.94	-0.17	-	-0.05	-
Unemployment rate	22.85	1.33	-	2.52	-
<b>Population aged 16 to 64 years</b>	30,658.5	-20.8	-0.07	-153.8	-0.50
Activity rate (16-64)	74.75	-0.18	-	0.27	-
Unemployment rate (16-64)	23.00	1.35	-	2.54	-
Employment rate (16-64)	57.56	-1.15	-	-1.68	-
MALES					
<b>Population aged 16 years and over</b>	18,791.3	3.0	0.02	-43.6	-0.23
Active population	12,645.7	-62.3	-0.49	-109.2	-0.86
- Employed	9,805.6	-228.4	-2.28	-404.0	-3.96
- Unemployed	2,840.1	166.1	6.21	294.8	11.58
Inactive	6,145.6	65.3	1.07	65.6	1.08
Activity rate	67.30	-0.34	-	-0.42	-
Unemployment rate	22.46	1.42	-	2.50	-
<b>Population aged 16 to 64 years</b>	15,419.9	-15.7	-0.10	-112.9	-0.73
Activity rate (16-64)	81.40	-0.39	-	-0.15	-
Unemployment rate (16-64)	22.62	1.44	-	2.54	-
Employment rate (16-64)	62.99	-1.48	-	-2.18	-
FEMALES					
<b>Population aged 16 years and over</b>	19,716.8	17.4	0.09	39.4	0.20
Active population	10,435.5	8.9	0.08	85.6	0.83
- Employed	8,001.9	-120.3	-1.48	-196.6	-2.40
- Unemployed	2,433.6	129.2	5.61	282.2	13.12
Inactive	9,281.4	8.5	0.09	-46.2	-0.50
Activity rate	52.93	0.00	-	0.33	-
Unemployment rate	23.32	1.22	-	2.53	-
<b>Population aged 16 to 64 years</b>	15,238.6	-5.1	-0.03	-40.9	-0.27
Activity rate (16-64)	68.01	0.04	-	0.73	-
Unemployment rate (16-64)	23.46	1.22	-	2.54	-
Employment rate (16-64)	52.05	-0.80	-	-1.15	-

### 2. Spanish population<sup>1</sup> aged 16 years and over by labour status

SPANISH POPULATION AGED 16 YEARS AND OVER	33,867.4	29.4	0.09	84.0	0.25
Active population	19,561.3	-45.6	-0.23	59.9	0.31
- Employed	15,513.4	-269.3	-1.71	-386.7	-2.43
- Unemployed	4,047.9	223.8	5.85	446.6	12.40
Inactive	14,306.1	75.0	0.53	24.2	0.17
Activity rate	57.76	-0.18	-	0.03	-
Unemployment rate	20.69	1.19	-	2.23	-

<sup>1</sup> including dual nationality

**National results**

(Continuation)

	Current quarter	Variation on previous quarter		Variation on same quarter, previous year	
		Difference	Percentage	Difference	Percentage
<b>3. Foreign population aged 16 years and over by labour status</b>					
FOREIGN POPULATION AGED 16 YEARS AND OVER	4,640.8	-9.0	-0.19	-88.3	-1.87
Active population	3,519.9	-7.9	-0.22	-83.5	-2.32
- Employed	2,294.1	-79.4	-3.34	-213.9	-8.53
- Unemployed	1,225.8	71.5	6.20	130.4	11.91
Inactive	1,120.9	-1.1	-0.10	-4.8	-0.43
Activity rate	75.85	-0.02	-	-0.35	-
Unemployment rate	34.82	2.11	-	4.43	-

**4. Employed by sex, age group and economic sector**

<b>BOTH SEXES</b>	17,807.5	-348.7	-1.92	-600.6	-3.26
16 to 19 years	92.3	-61.9	-40.17	-31.1	-25.21
20 to 24 years	844.2	-86.0	-9.25	-156.0	-15.60
25 to 29 years	1,901.1	-67.1	-3.41	-169.5	-8.19
30 to 34 years	2,640.9	-67.3	-2.48	-185.2	-6.55
35 to 39 years	2,832.5	-27.9	-0.98	-51.0	-1.77
40 to 44 years	2,595.3	-42.4	-1.61	-66.5	-2.50
45 to 49 years	2,417.0	5.9	0.24	-26.8	-1.10
50 to 54 years	2,053.9	-3.0	-0.15	23.1	1.14
55 and over	2,430.3	1.0	0.04	62.4	2.64
<b>MALES</b>	9,805.6	-228.4	-2.28	-404.0	-3.96
16 to 19 years	52.8	-32.9	-38.40	-20.2	-27.67
20 to 24 years	425.0	-49.1	-10.36	-87.8	-17.12
25 to 29 years	982.1	-39.4	-3.86	-86.4	-8.09
30 to 34 years	1,416.6	-46.6	-3.18	-117.2	-7.64
35 to 39 years	1,571.6	-23.5	-1.47	-39.3	-2.44
40 to 44 years	1,450.0	-27.4	-1.86	-43.1	-2.89
45 to 49 years	1,344.8	-0.5	-0.04	-17.4	-1.28
50 to 54 years	1,147.1	-13.4	-1.16	3.0	0.26
55 and over	1,415.8	4.5	0.32	4.5	0.32
<b>FEMALES</b>	8,001.9	-120.3	-1.48	-196.6	-2.40
16 to 19 years	39.4	-29.0	-42.39	-10.9	-21.64
20 to 24 years	419.2	-36.9	-8.09	-68.2	-14.00
25 to 29 years	919.0	-27.7	-2.92	-83.1	-8.29
30 to 34 years	1,224.4	-20.7	-1.66	-68.0	-5.26
35 to 39 years	1,261.0	-4.5	-0.35	-11.7	-0.92
40 to 44 years	1,145.4	-15.0	-1.29	-23.4	-2.00
45 to 49 years	1,072.2	6.4	0.60	-9.4	-0.87
50 to 54 years	906.8	10.4	1.16	20.1	2.27
55 and over	1,014.5	-3.4	-0.34	58.0	6.06
<b>TOTAL EMPLOYED</b>	17,807.5	-348.7	-1.92	-600.6	-3.26
Agriculture	808.5	100.8	14.24	4.0	0.49
Industry	2,526.3	-50.0	-1.94	-96.5	-3.68
Construction	1,276.9	-93.9	-6.85	-295.6	-18.80
Services	13,195.9	-305.7	-2.26	-212.5	-1.58



**National results**

(Continuation)

	Current quarter	Variation on previous quarter		Variation on same quarter, previous year	
		Difference	Percentage	Difference	Percentage
<b>5. Employed by professional status, type of contract and working hours</b>					
TOTAL EMPLOYED	17,807.5	-348.7	-1.92	-600.6	-3.26
Self-employed workers	2,968.7	-0.3	-0.01	-115.5	-3.74
- Employers	903.6	-31.9	-3.41	-109.6	-10.82
- Independent workers	1,904.9	26.4	1.41	7.2	0.38
- Cooperatives members	30.3	-1.1	-3.43	-5.3	-14.97
- Family workers	129.9	6.3	5.06	-7.7	-5.60
Employees	14,829.2	-350.2	-2.31	-485.0	-3.17
- With a permanent job	11,124.7	-104.2	-0.93	-389.1	-3.38
- With a temporary job	3,704.4	-246.0	-6.23	-95.9	-2.52
Others	9.7	1.8	22.54	-0.2	-1.54
FULL-TIME EMPLOYED	15,349.0	-408.7	-2.59	-584.7	-3.67
Males	9,215.1	-239.3	-2.53	-430.3	-4.46
Females	6,133.9	-169.4	-2.69	-154.4	-2.45
PART-TIME EMPLOYED	2,458.5	60.0	2.50	-16.0	-0.65
Males	590.5	10.9	1.88	26.3	4.65
Females	1,868.0	49.1	2.70	-42.2	-2.21

**6. Unemployed by sex, age group, and economic sector**

BOTH SEXES	5,273.6	295.3	5.93	577.0	12.29
16 to 19 years	208.7	-27.4	-11.59	-8.9	-4.09
20 to 24 years	675.4	-6.4	-0.95	52.4	8.41
25 to 54 years	3,942.1	286.7	7.84	465.8	13.40
55 and over	447.5	42.4	10.46	67.7	17.82
MALES	2,840.1	166.1	6.21	294.8	11.58
16 to 19 years	119.0	-16.4	-12.12	-3.3	-2.70
20 to 24 years	369.6	6.7	1.84	23.1	6.67
25 to 54 years	2,082.9	145.7	7.52	245.3	13.35
55 and over	268.6	30.2	12.65	29.8	12.46
FEMALES	2,433.6	129.2	5.61	282.2	13.12
16 to 19 years	89.8	-11.0	-10.88	-5.6	-5.88
20 to 24 years	305.8	-13.1	-4.12	29.3	10.58
25 to 54 years	1,859.1	141.1	8.21	220.6	13.46
55 and over	178.9	12.2	7.32	37.9	26.91
TOTAL UNEMPLOYED	5,273.6	295.3	5.93	577.0	12.29
Agriculture	209.6	-42.3	-16.80	0.6	0.28
Industry	246.8	29.1	13.34	15.0	6.49
Construction	452.7	-2.9	-0.63	13.6	3.09
Services	1,602.1	124.5	8.43	191.4	13.57
Lost their job more than 1 year ago	2,319.2	201.9	9.53	270.0	13.18
First job seekers	443.2	-15.0	-3.27	86.4	24.22

## National results

(Conclusion)

	Current quarter	Variation on previous quarter		Variation on same quarter, previous year	
		Difference	Percentage	Difference	Percentage

### 7. Unemployment rate by relationship with the reference person

	Current quarter	Variation on previous quarter		Variation on same quarter, previous year	
TOTAL	22.85	1.33	-	2.52	-
Reference person	19.08	1.16	-	2.46	-
Spouse or partner	18.85	1.30	-	1.60	-
Child	37.35	1.94	-	4.03	-
Other relatives	32.07	1.78	-	5.09	-
Unrelated persons	22.09	5.25	-	3.20	-

### 8. Household data

	Current quarter	Variation on previous quarter		Variation on same quarter, previous year	
TOTAL HOUSEHOLDS	17,394.3	22.9	0.13	141.6	0.82
Households with at least one active member	13,009.9	27.3	0.21	50.0	0.39
- All member employed	8,846.1	-212.3	-2.34	-374.6	-4.06
- All member unemployed	1,575.0	149.8	10.51	247.0	18.60
Households without any active population	4,384.4	-4.5	-0.10	91.6	2.13

### Mobility according to activity in current and previous quarter

Classification in previous quarter	Classification in current quarter			
	Total	Employed	Unemployed	Inactive
<b>BOTH SEXES</b>				
Total	100.00	100.00	100.00	100.00
Employed	46.97	92.54	19.21	3.79
Unemployed	12.65	4.75	64.22	4.58
Inactive	40.38	2.71	16.56	91.63
<b>MALES</b>				
Total	100.00	100.00	100.00	100.00
Employed	53.58	93.88	21.02	4.17
Unemployed	13.68	4.55	67.01	4.67
Inactive	32.74	1.58	11.96	91.17
<b>FEMALES</b>				
Total	100.00	100.00	100.00	100.00
Employed	40.70	90.90	17.18	3.55
Unemployed	11.68	5.01	61.09	4.52
Inactive	47.62	4.09	21.72	91.93

Grossing up factors of current quarter (forward analysis)

**Results by Autonomous Communities and Cities** (Continues)

	Current quarter	Variation on previous quarter		Variation on same quarter, previous year	
		Difference	Percentage	Difference	Percentage
<b>1. Population aged 16 years and over</b>					
TOTAL	38,508.2	20.4	0.05	-4.3	-0.01
Andalucía	6,792.7	4.7	0.07	22.1	0.33
Aragón	1,108.9	-1.8	-0.16	-2.3	-0.20
Asturias, Principado de	925.1	-1.0	-0.11	-4.2	-0.46
Balears, Illes	903.5	-2.4	-0.26	4.7	0.52
Canarias	1,764.0	4.1	0.23	14.6	0.84
Cantabria	493.6	-0.4	-0.07	-0.8	-0.17
Castilla y León	2,134.0	-3.1	-0.15	-12.0	-0.56
Castilla-La Mancha	1,705.7	1.6	0.09	2.4	0.14
Cataluña	6,053.1	18.2	0.30	-24.0	-0.39
Comunitat Valenciana	4,175.4	7.1	0.17	2.0	0.05
Extremadura	908.1	0.0	0.00	0.6	0.07
Galicia	2,373.3	-3.3	-0.14	-8.7	-0.37
Madrid, Comunidad de	5,275.7	-2.3	-0.04	7.5	0.14
Murcia, Región de	1,193.7	0.9	0.08	5.5	0.46
Navarra, Comunidad Foral de	514.7	0.8	0.16	1.2	0.24
País Vasco	1,807.8	-3.8	-0.21	-14.0	-0.77
Rioja, La	261.4	0.3	0.11	-1.3	-0.50
Ceuta	60.3	0.1	0.19	0.9	1.51
Melilla	57.2	0.5	0.96	1.7	2.98

**2. Active population**

TOTAL	23,081.2	-53.4	-0.23	-23.6	-0.10
Andalucía	3,998.1	12.4	0.31	21.6	0.54
Aragón	649.8	-0.4	-0.06	6.2	0.96
Asturias, Principado de	478.7	-0.3	-0.06	1.2	0.24
Balears, Illes	581.5	-34.1	-5.54	2.9	0.51
Canarias	1,105.4	-6.9	-0.62	19.9	1.83
Cantabria	279.2	-2.4	-0.84	4.4	1.60
Castilla y León	1,174.4	-19.4	-1.63	-9.2	-0.78
Castilla-La Mancha	1,004.4	4.2	0.42	14.0	1.42
Cataluña	3,782.2	-36.3	-0.95	-38.1	-1.00
Comunitat Valenciana	2,520.3	23.7	0.95	6.5	0.26
Extremadura	494.1	6.5	1.32	-2.9	-0.59
Galicia	1,313.3	-0.3	-0.02	16.7	1.29
Madrid, Comunidad de	3,366.8	-2.0	-0.06	-73.6	-2.14
Murcia, Región de	743.9	6.4	0.87	-3.4	-0.46
Navarra, Comunidad Foral de	307.8	-2.3	-0.74	0.9	0.31
País Vasco	1,058.7	-2.0	-0.19	4.3	0.41
Rioja, La	156.0	-3.1	-1.93	0.1	0.07
Ceuta	36.2	4.0	12.46	4.0	12.56
Melilla	30.3	-1.3	-4.03	0.8	2.80

\* Data below 5000 are subject to strong variations, due to sampling error

**Results by Autonomous Communities and Cities** (Conclusion)

	Current quarter	Variation on previous quarter		Variation on same quarter, previous year	
		Difference	Percentage	Difference	Percentage
<b>3. Employed</b>					
TOTAL	17,807.5	-348.7	-1.92	-600.6	-3.26
Andalucía	2,749.6	-3.2	-0.12	-99.5	-3.49
Aragón	540.4	-4.7	-0.86	0.1	0.01
Asturias, Principado de	388.2	-8.6	-2.16	-9.7	-2.45
Balears, Illes	434.9	-71.0	-14.03	-15.0	-3.34
Canarias	763.5	-20.1	-2.56	-7.6	-0.99
Cantabria	234.7	-7.2	-2.96	0.9	0.40
Castilla y León	972.8	-29.0	-2.89	-24.0	-2.41
Castilla-La Mancha	758.8	-16.9	-2.18	-20.3	-2.61
Cataluña	3,006.8	-69.8	-2.27	-126.7	-4.04
Comunitat Valenciana	1,879.0	-0.3	-0.01	-58.9	-3.04
Extremadura	352.8	-19.7	-5.29	-25.4	-6.72
Galicia	1,072.9	-14.1	-1.30	-20.2	-1.85
Madrid, Comunidad de	2,743.4	-52.3	-1.87	-155.0	-5.35
Murcia, Región de	544.8	-14.3	-2.56	-15.9	-2.83
Navarra, Comunidad Foral de	265.3	-8.6	-3.14	-5.9	-2.16
País Vasco	925.3	-6.3	-0.68	-14.3	-1.52
Rioja, La	126.8	-4.6	-3.50	-4.6	-3.52
Ceuta	25.7	4.1	19.25	1.5	6.07
Melilla	21.8	-2.3	-9.47	0.0	-0.08

**4. Unemployed**

TOTAL	5,273.6	295.3	5.93	577.0	12.29
Andalucía	1,248.5	15.6	1.26	121.1	10.74
Aragón	109.4	4.3	4.13	6.1	5.89
Asturias, Principado de	90.5	8.3	10.06	10.9	13.71
Balears, Illes	146.5	36.9	33.67	17.9	13.95
Canarias	341.9	13.2	4.03	27.5	8.75
Cantabria	44.5	4.8	12.08	3.5	8.44
Castilla y León	201.5	9.6	4.98	14.8	7.91
Castilla-La Mancha	245.6	21.1	9.40	34.4	16.27
Cataluña	775.4	33.4	4.51	88.7	12.91
Comunitat Valenciana	641.3	24.0	3.88	65.4	11.36
Extremadura	141.3	26.2	22.73	22.5	18.94
Galicia	240.4	13.8	6.10	36.9	18.13
Madrid, Comunidad de	623.3	50.3	8.77	81.3	15.01
Murcia, Región de	199.1	20.8	11.65	12.4	6.66
Navarra, Comunidad Foral de	42.5	6.3	17.38	6.8	19.06
País Vasco	133.5	4.3	3.36	18.6	16.20
Rioja, La	29.2	1.5	5.48	4.7	19.38
Ceuta	10.6	-0.1	-1.22	2.6	(:)
Melilla	8.5	1.0	13.38	0.8	10.98

\* Data below 5,000 are subject to strong variations, due to sampling error

(:) The variation percentages calculated from low figures with high sampling errors are not significant

## Results by Autonomous Communities and Cities

(Absolute figures in thousands and rates in percentage)

### 5. Employed and unemployed by sex. Activity and unemployment rates

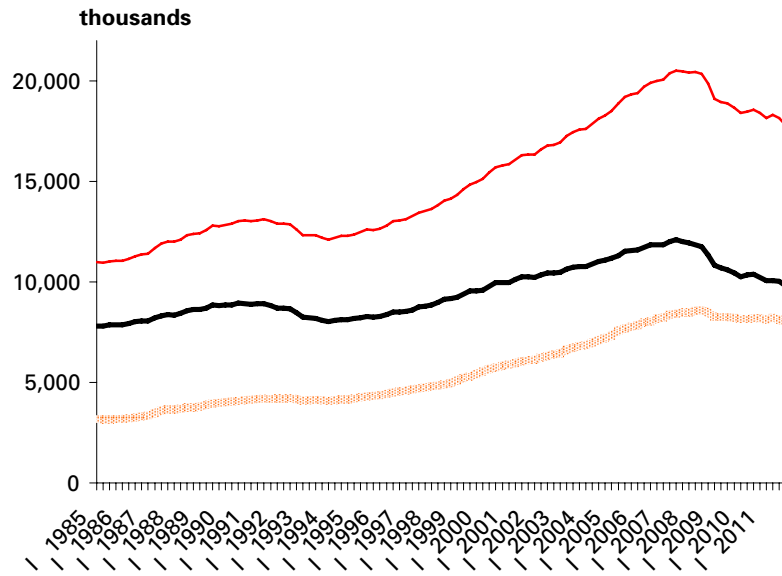
	Both sexes			Males			Females					
	Employed	Unemployed	Activity rate	Unem. rate	Employed	Unemployed	Activity rate	Unem. Rate	Employed	Unemployed	Activity rate	Unem. Rate
<b>TOTAL</b>	17,807.5	5,273.6	59.94	22.85	9,805.6	2,840.1	67.30	22.46	8,001.9	2,433.6	52.93	23.32
<b>Andalucía</b>	2,749.6	1,248.5	58.86	31.23	1,580.1	670.9	67.49	29.80	1,169.5	577.6	50.53	33.06
<b>Aragón</b>	540.4	109.4	58.60	16.84	298.2	60.4	65.57	16.85	242.1	49.0	51.81	16.83
<b>Asturias, Principado de</b>	388.2	90.5	51.74	18.90	206.3	51.1	58.77	19.85	181.9	39.4	45.43	17.81
<b>Balears, Illes</b>	434.9	146.5	64.36	25.20	238.4	82.4	71.38	25.67	196.5	64.2	57.41	24.62
<b>Canarias</b>	763.5	341.9	62.66	30.93	420.6	184.7	69.33	30.52	342.9	157.2	56.13	31.43
<b>Cantabria</b>	234.7	44.5	56.57	15.93	128.6	24.8	64.25	16.15	106.1	19.7	49.38	15.67
<b>Castilla y León</b>	972.8	201.5	55.03	17.16	557.1	103.0	62.85	15.60	415.7	98.5	47.46	19.16
<b>Castilla-La Mancha</b>	758.8	245.6	58.89	24.45	445.2	128.5	67.11	22.40	313.7	117.1	50.63	27.18
<b>Cataluña</b>	3,006.8	775.4	62.48	20.50	1,610.0	420.3	69.08	20.70	1,396.8	355.1	56.26	20.27
<b>Comunitat Valenciana</b>	1,879.0	641.3	60.36	25.45	1,033.7	358.1	67.67	25.73	845.3	283.2	53.27	25.10
<b>Extremadura</b>	352.8	141.3	54.41	28.59	210.9	72.3	63.22	25.52	141.9	69.0	45.83	32.72
<b>Galicia</b>	1,072.9	240.4	55.33	18.30	574.1	122.6	61.48	17.60	498.8	117.7	49.72	19.09
<b>Madrid, Comunidad de</b>	2,743.4	623.3	63.82	18.51	1,446.8	339.4	70.96	19.00	1,296.6	283.9	57.30	17.97
<b>Murcia, Región de</b>	544.8	199.1	62.32	26.77	312.4	111.1	70.49	26.23	232.4	88.1	54.05	27.48
<b>Navarra, Comunidad Foral de</b>	265.3	42.5	59.80	13.82	144.9	21.9	65.71	13.13	120.3	20.6	54.05	14.63
<b>País Vasco</b>	925.3	133.5	58.56	12.61	496.7	65.6	64.74	11.67	428.6	67.8	52.86	13.67
<b>Rioja, La</b>	126.8	29.2	59.66	18.70	70.4	15.1	66.39	17.62	56.4	14.1	53.13	20.02
<b>Ceuta</b>	25.7	10.6	60.09	29.16	16.9	4.5	68.23	21.03	8.7	6.1	51.25	40.92
<b>Melilla</b>	21.8	8.5	53.00	28.13	14.2	3.4	64.67	19.20	7.6	5.2	42.49	40.38

\* Data below 5,000 are subject to strong variations, due to sampling errors

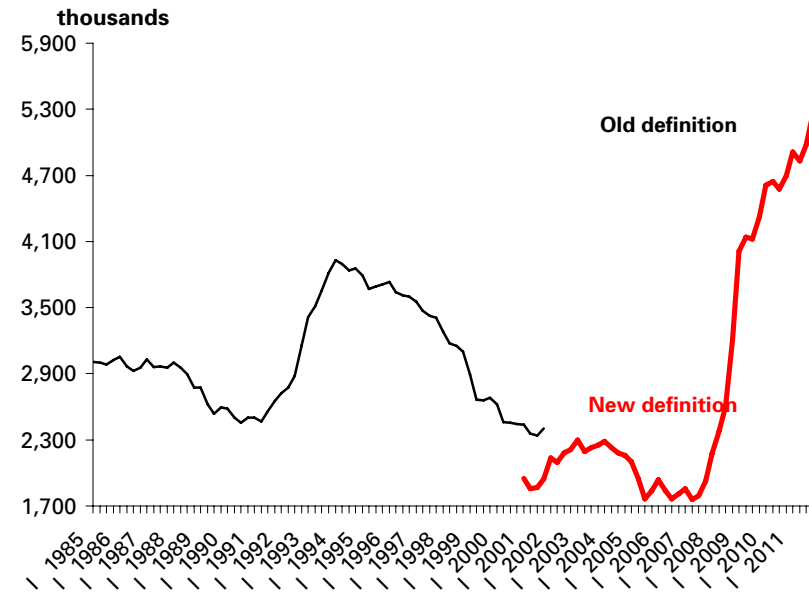
# Employed and unemployed by sex

APS Fourth Quarter 2011

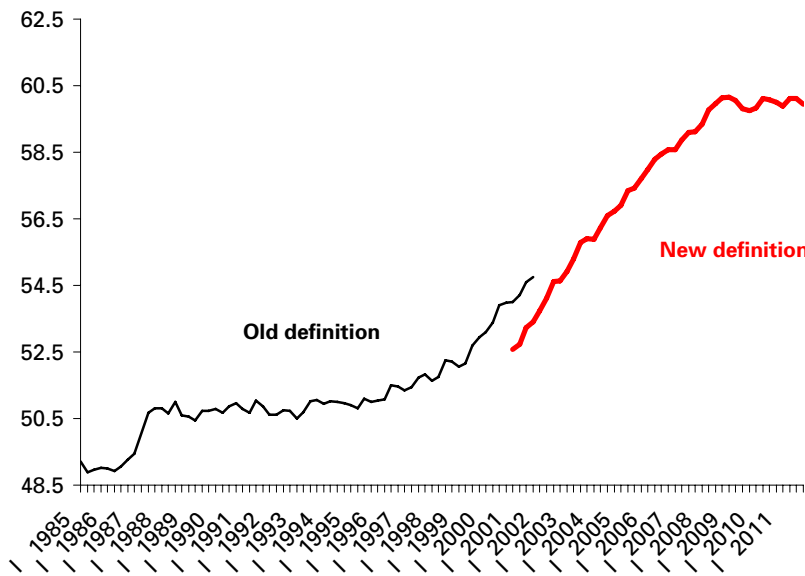
## Employment



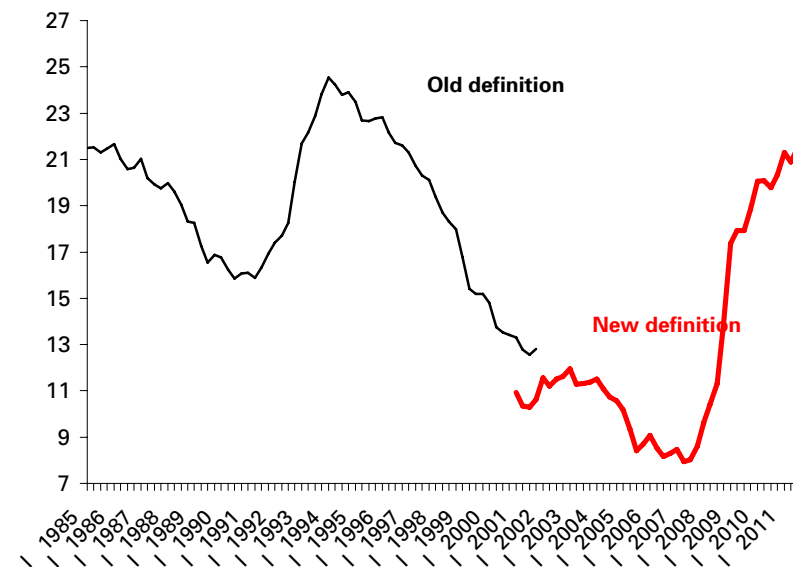
## Unemployment



## Activity rate



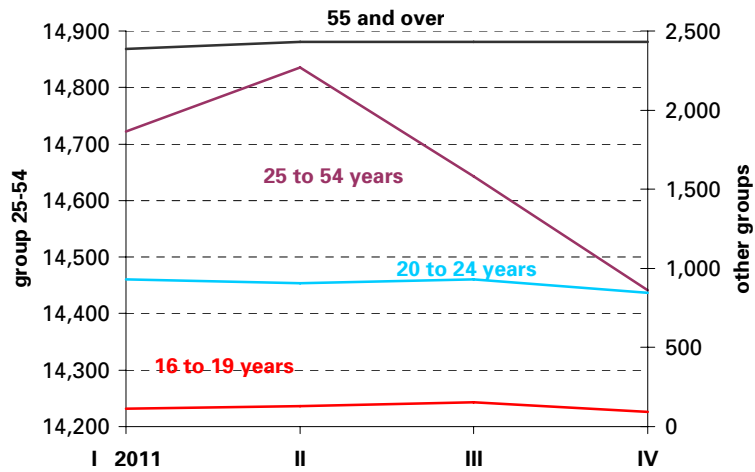
## Unemployment rate



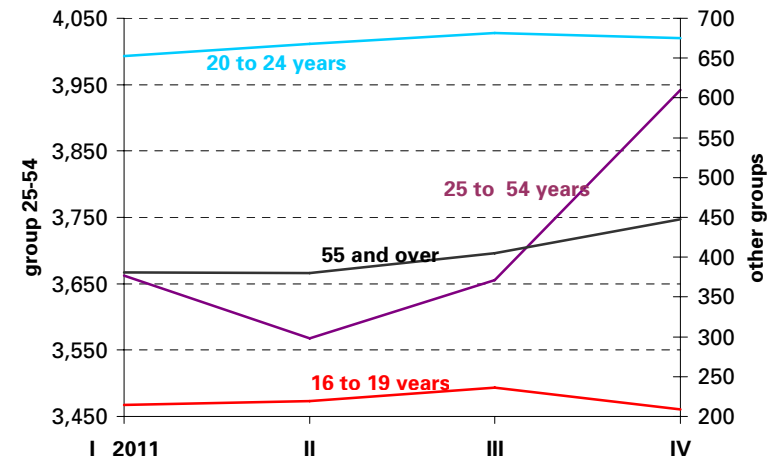
# Employed and Unemployed by age

APS Fourth Quarter 2011

## Employment (thousands)

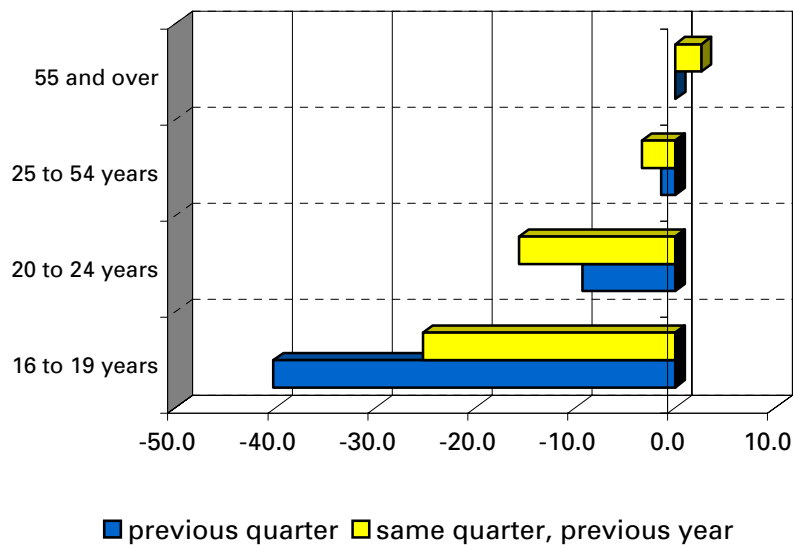


## Unemployment (thousands)

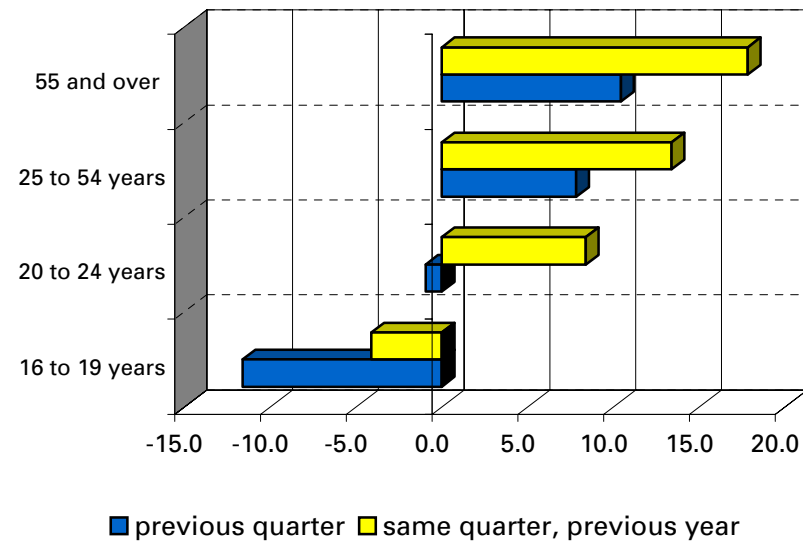


## Variation percentages over the previous quarter and over the same quarter of the previous year

### Employment

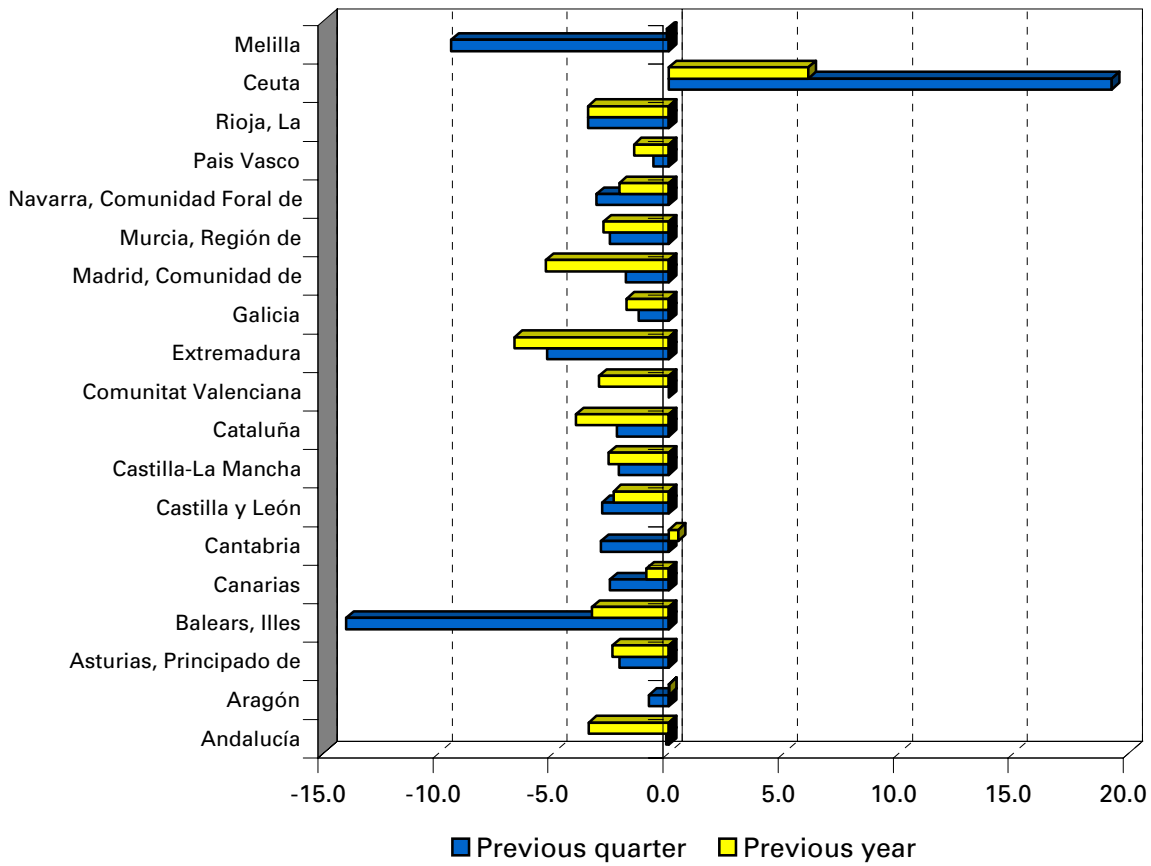


### Unemployment



# Employment variation percentages over the previous quarter and over the same quarter of the previous year

Fourth Quarter 2011



## Unemployment rate (Spain = 22.85 )

