

10 March 2015

Retail Trade Indices (RTI). Base 2010
January 2015. *Provisional data*

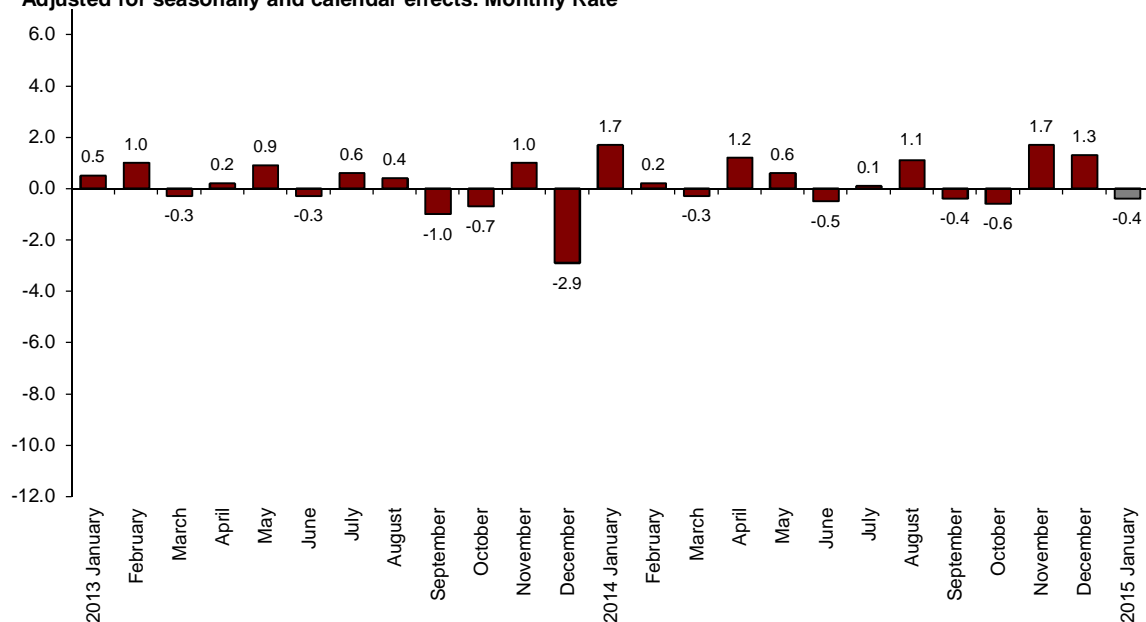
The monthly change of the Retail Trade Index at constant prices stands at -0.4% after adjusting for seasonal and calendar effects

The annual rate of the General Retail Trade Index at constant prices stands at 4.1% in the series adjusted for seasonal and calendar effects and at 4.2% in the original series

Monthly evolution of sales in Retail Trade

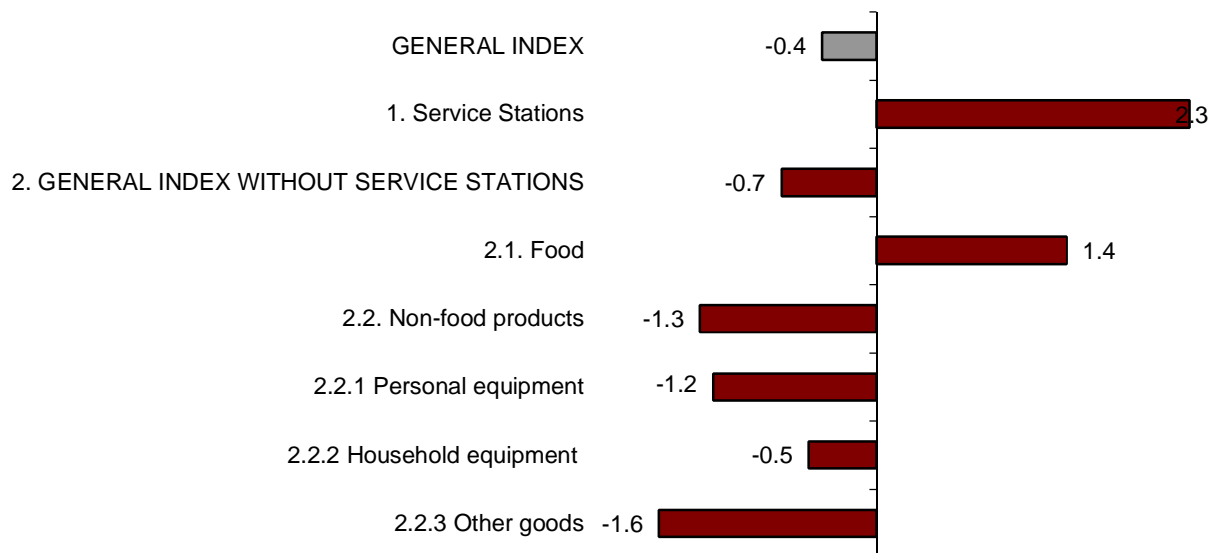
The monthly evolution of the General Retail Trade Index at constant prices between the months of January and December stood at -0.4% after adjusting for seasonal and calendar effects. This rate was 1.7 points lower than that registered in the previous month.

General Index of Retail Trade at constant prices
Adjusted for seasonally and calendar effects. Monthly Rate



The general index, not including service stations, registered a monthly rate of -0.7% . By products, *Food* increased by 1.4% and *Non-food products* decreased by 1.3% . By type of product, *Other goods* registered the greatest decrease (-1.6%).

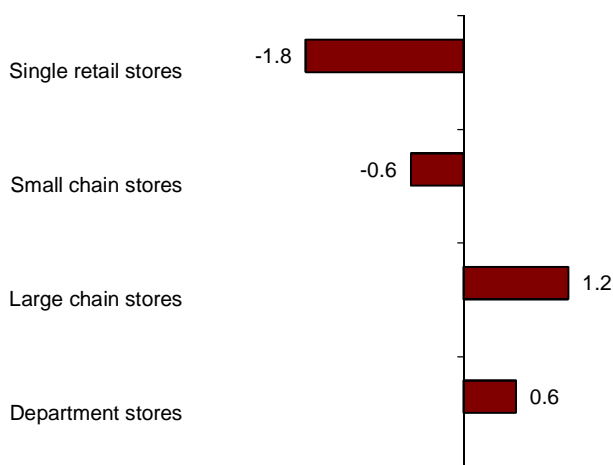
**Sales Indices at constant prices: General and by type of products.
Adjusted for seasonal and calendar effects. Monthly rate**



Large chain stores (1.2%) and *Department stores* (0.6%) registered positive rates as compared with the previous month.

In turn, *Single retail stores* (-1.8%) and *Small chain stores* (-0.6%) registered decreases as compared with December 2014.

**Sales indices at constant prices by distribution class
Adjusted for seasonal and calendar effects. Monthly rate**

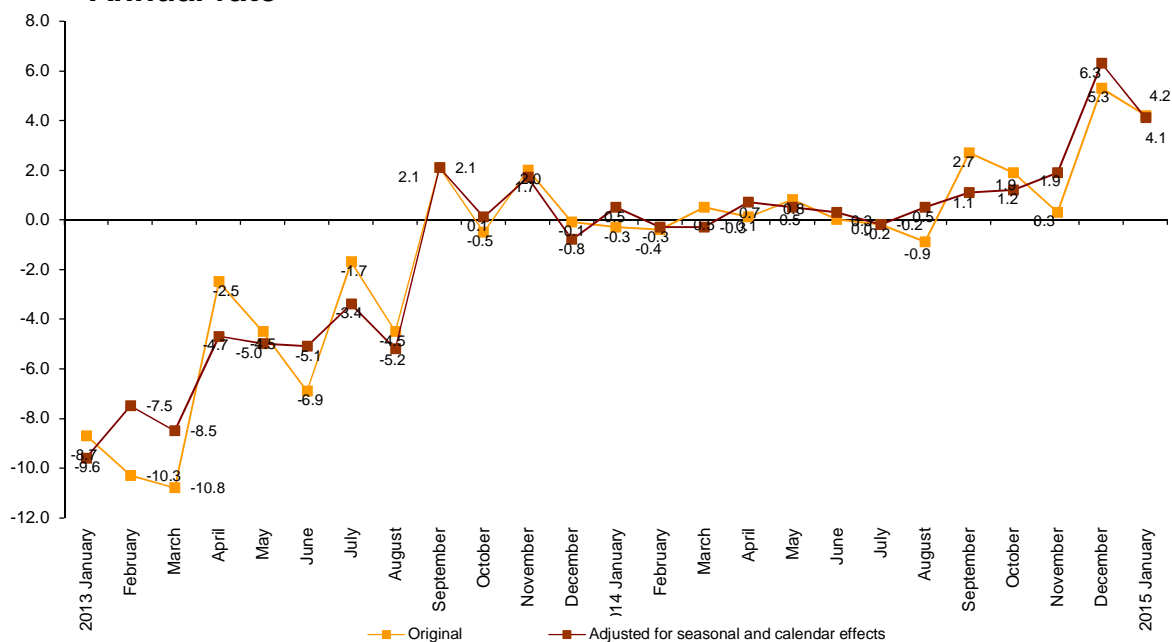


Annual evolution of sales in retail trade

In January, the General Retail Trade Index registered a variation of 4.1% as compared to the same month of 2014, after adjusting the seasonal and calendar effects. This annual rate was 2.2 points lower than that registered in December 2014.

The original series of the RTI at constant prices registered a 4.2% variation as compared to January 2014, standing 1.1 points below the rate of the previous month.

**Retail Trade General Index at constant prices
Annual rate**



The General Index, not including service stations, and after adjusting the seasonal and calendar effects, registered an annual change of 3.0% in January. By type of product, Food increased by 2.9% and Non-food products did so by 3.0%.

Retail trade sector sales. Annual rates at constant prices.

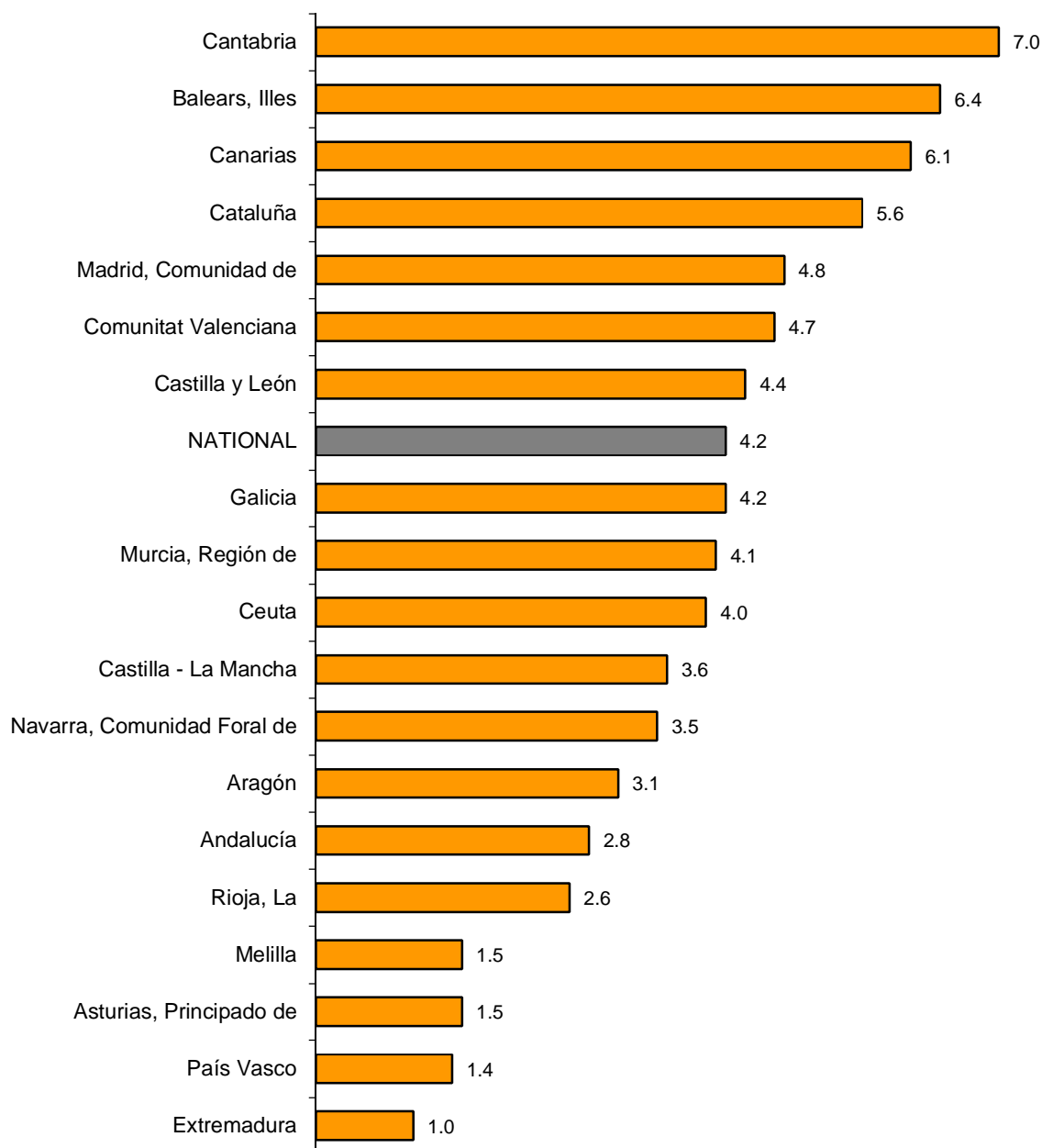
	Original Index	Seasonally adjusted index
	Annual rate (%)	Annual rate (%)
GENERAL INDEX	4.2	4.1
1. Service stations	8.9	8.6
2. GENERAL INDEX WITHOUT SERVICE STATIONS	3.0	3.0
2.1. Food	3.0	2.9
2.2. Non-food products	2.9	3.0
2.2.1 Personal equipment	2.3	2.5
2.2.2 Household equipment	3.4	3.2
2.2.3 Other goods	1.9	2.1
DISTRIBUTION CLASS		
3. Single retail stores	1.0	1.1
4. Small chain stores	1.2	1.5
5. Large chain stores	6.0	5.9
6. Department stores	4.9	4.8

Results by Autonomous Community. Annual variation rates in sales. Original series

In January, all Autonomous Communities increased their sales as compared to the same month of 2014. The greatest increases were recorded in Cantabria (7.0%), Illes Balears (6.4%) and Canarias (6.1%).

In turn, Extremadura (1.0%), País Vasco (1.4%) and Principado de Asturias (1.5%) registered the lowest increases.

General Indices : National and by Autonomous City and Community. Annual sales rate



Evolution of employment

In January, the employment index in the retail trade sector registered a variation of 0.6%, as compared to the same month of 2014. This rate was two tenths lower than that registered in December. In service stations, employment decreased by 0.4%..

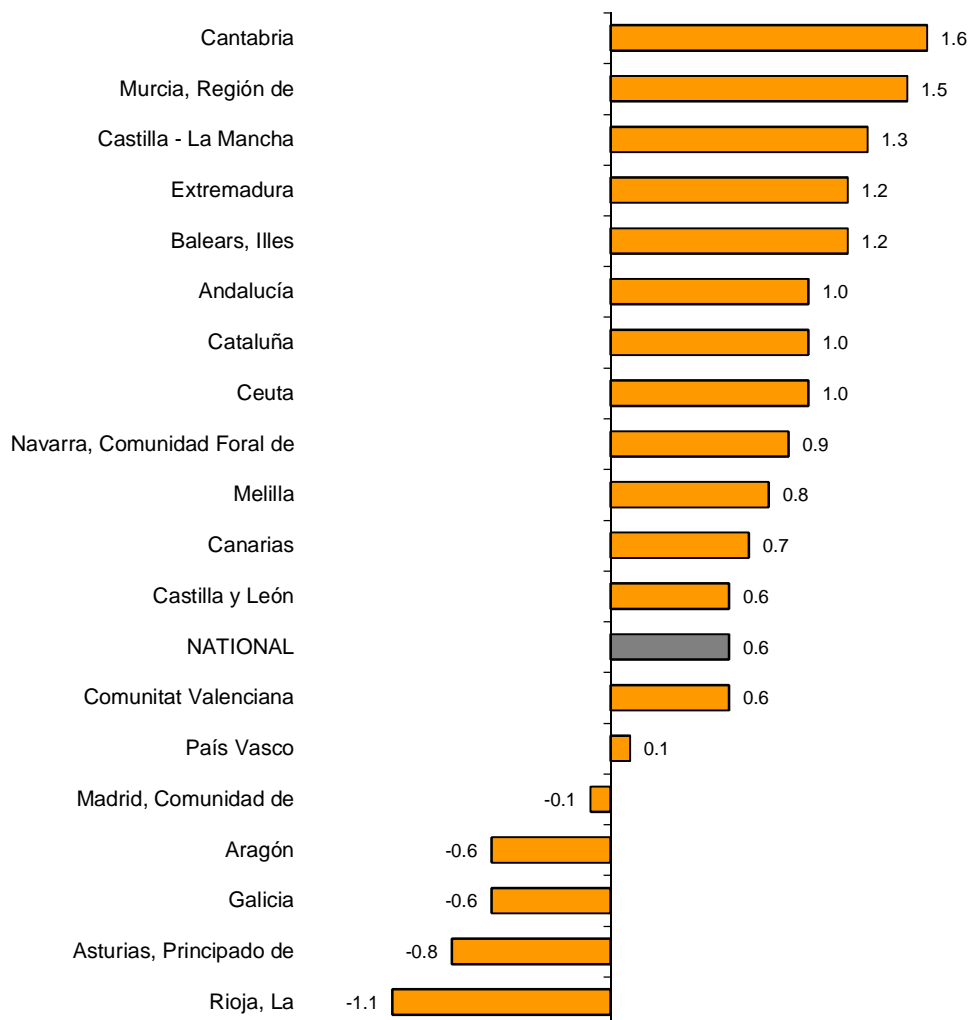
Employment Indices: General and by distribution class

	Index	Rate (%)		
		Monthly	Annual	Year-to-date average
GENERAL INDEX	95.4	-1.4	0.6	0.6
1. Service stations	91.5	-0.5	-0.4	-0.4
2. GENERAL INDEX WITHOUT SERVICE STATIONS	95.5	-1.4	0.6	0.6
2.1. Single retail stores	98.7	0.0	2.0	2.0
2.2. Small chain stores	85.3	-1.2	-1.2	-1.2
2.3. Large chain stores	100.2	-2.3	-0.5	-0.5
2.4. Department stores	90.8	-6.2	-0.2	-0.2

Results by Autonomous Community. Annual variation rates in employment

In January, employment in retail trade increased its annual rate in 12 Autonomous Communities. Cantabria (1.6%) was the one to register the greatest increase. In turn, La Rioja (-1.1%) registered the greatest decrease.

**General Indices : National and by Autonomous City and Community.
Employment Index. Annual Rate**



Retail Trade Indices. Base 2010 January 2015

Provisional data

1. Sales indices: General, by products and by distribution class Adjusted for seasonal and calendar effects

	Index	Rate (%)		Year-to-date average	Deflated index	Rate (%)		Year-to-date average
		Monthly	Annual			Monthly	Annual	
GENERAL INDEX	92.9	-0.9	1.1	1.1	87.0	-0.4	4.1	4.1
1. Service stations	91.7	-3.2	-11.2	-11.2	88.1	2.3	8.6	8.6
2. GENERAL INDEX WITHOUT SERVICE STATIONS	92.9	-0.6	2.3	2.3	86.7	-0.7	3.0	3.0
2.1. Food	103.8	1.5	2.7	2.7	94.8	1.4	2.9	2.9
2.2. Non-food products	86.1	-1.2	2.1	2.1	81.4	-1.3	3.0	3.0
2.2.1 Personal equipment	88.8	-1.6	2.5	2.5	88.7	-1.2	2.5	2.5
2.2.2 Household equipment	81.7	-0.4	2.7	2.7	79.9	-0.5	3.2	3.2
2.2.3 Other goods	87.2	-1.4	1.2	1.2	82.3	-1.6	2.1	2.1
DISTRIBUTION CLASS								
3. Single retail stores	85.9	-1.8	0.5	0.5	80.3	-1.8	1.1	1.1
4. Small chain stores	87.7	-0.6	0.9	0.9	81.9	-0.6	1.5	1.5
5. Large chain stores	108.8	1.4	5.2	5.2	101.6	1.2	5.9	5.9
6. Department stores	90.4	0.6	4.1	4.1	84.3	0.6	4.8	4.8

2. Sales indices: General, by products and by distribution class. Adjusted for calendar effects

	Index	Rate (%)		Deflated index	Rate (%)	
		Annual	Year-to-date average		Annual	Year-to-date average
GENERAL INDEX	95.0	1.0	1.0	90.3	4.2	4.2
1. Service stations	87.3	-11.6	-11.6	87.0	8.9	8.9
2. GENERAL INDEX WITHOUT SERVICE STATIONS	95.7	2.3	2.3	90.3	3.0	3.0
2.1. Food	96.7	2.7	2.7	88.0	3.0	3.0
2.2. Non-food products	95.0	2.0	2.0	91.6	2.9	2.9
2.2.1 Personal equipment	108.8	2.2	2.2	116.9	2.3	2.3
2.2.2 Household equipment	84.5	2.9	2.9	82.9	3.4	3.4
2.2.3 Other goods	92.4	0.9	0.9	89.2	1.9	1.9
DISTRIBUTION CLASS						
3. Single retail stores	86.0	0.3	0.3	81.1	1.0	1.0
4. Small chain stores	91.7	0.5	0.5	86.5	1.2	1.2
5. Large chain stores	108.6	5.3	5.3	102.5	6.0	6.0
6. Department stores	102.6	4.2	4.2	96.8	4.9	4.9

3. Sales indices: General, by products and by distribution class Original Series

	Index	Rate (%)		Deflated index	Rate (%)	
		Annual	Year-to-date average		Annual	Year-to-date average
GENERAL INDEX	95.3	1.0	1.0	90.6	4.2	4.2
1. Service stations	87.5	-11.6	-11.6	87.2	8.9	8.9
2. GENERAL INDEX WITHOUT SERVICE STATIONS	96.1	2.3	2.3	90.7	3.0	3.0
2.1. Food	97.0	2.7	2.7	88.3	3.0	3.0
2.2. Non-food products	95.4	2.0	2.0	92.1	2.9	2.9
2.2.1 Personal equipment	109.2	2.2	2.2	117.3	2.3	2.3
2.2.2 Household equipment	84.9	2.9	2.9	83.4	3.4	3.4
2.2.3 Other goods	92.8	0.9	0.9	89.6	1.9	1.9
DISTRIBUTION CLASS						
2.1. Single retail stores	86.4	0.3	0.3	81.5	1.0	1.0
2.2. Small chain stores	92.1	0.5	0.5	86.9	1.2	1.2
2.3. Large chain stores	109.1	5.3	5.3	102.9	6.0	6.0
2.4. Department stores	102.9	4.2	4.2	97.1	4.9	4.9
2.4.1. Food	90.6	0.4	0.4	82.4	0.6	0.6
2.4.2. Non-food products	108.4	5.2	5.2	104.6	6.2	6.2

4. Sales indices: National and by Autonomous City and Community Original Series

	Index	Rate (%)		Deflated index	Rate (%)	
		Annual	Year-to-date average		Annual	Year-to-date average
NATIONAL	95.3	1.0	1.0	90.6	4.2	4.2
Andalucía	90.7	-0.1	-0.1	86.3	2.8	2.8
Aragón	90.9	-0.1	-0.1	86.8	3.1	3.1
Asturias, Principado de	93.6	-1.7	-1.7	89.3	1.5	1.5
Balears, Illes	89.9	3.3	3.3	84.9	6.4	6.4
Canarias	110.5	2.9	2.9	107.5	6.1	6.1
Cantabria	96.4	3.4	3.4	90.5	7.0	7.0
Castilla y León	95.0	0.5	0.5	89.8	4.4	4.4
Castilla - La Mancha	90.5	-0.5	-0.5	86.3	3.6	3.6
Cataluña	97.4	2.6	2.6	91.4	5.6	5.6
Comunitat Valenciana	93.7	1.5	1.5	88.9	4.7	4.7
Extremadura	98.3	-2.0	-2.0	93.6	1.0	1.0
Galicia	97.3	1.1	1.1	92.6	4.2	4.2
Madrid, Comunidad de	96.4	1.4	1.4	92.2	4.8	4.8
Murcia, Región de	90.5	0.8	0.8	86.1	4.1	4.1
Navarra, Comunidad Foral de	96.9	-0.1	-0.1	93.4	3.5	3.5
País Vasco	96.8	-1.4	-1.4	92.3	1.4	1.4
Rioja, La	99.1	-0.3	-0.3	93.5	2.6	2.6
Ceuta	100.3	2.3	2.3	97.5	4.0	4.0
Melilla	98.9	0.2	0.2	97.1	1.5	1.5

5. Employment Indices: General and by distribution class

	Index	Rate (%)		
		Monthly	Annual	Year-to-date average
GENERAL INDEX	95.4	-1.4	0.6	0.6
1. Service stations	91.5	-0.5	-0.4	-0.4
2. GENERAL INDEX WITHOUT SERVICE STATIONS	95.5	-1.4	0.6	0.6
2.1. Single retail stores	98.7	0.0	2.0	2.0
2.2. Small chain stores	85.3	-1.2	-1.2	-1.2
2.3. Large chain stores	100.2	-2.3	-0.5	-0.5
2.4. Department stores	90.8	-6.2	-0.2	-0.2

6. Employment Indices: National and by Autonomous City and Community

	Index	Rate (%)		
		Monthly	Annual	Year-to-date average
NATIONAL	95.4	-1.4	0.6	0.6
Andalucía	91.8	-1.3	1.0	1.0
Aragón	94.2	-1.8	-0.6	-0.6
Asturias, Principado de	91.9	-1.0	-0.8	-0.8
Balears, Illes	96.3	-2.0	1.2	1.2
Canarias	101.5	-1.6	0.7	0.7
Cantabria	97.4	-1.9	1.6	1.6
Castilla y León	96.7	-0.8	0.6	0.6
Castilla - La Mancha	97.6	-0.1	1.3	1.3
Cataluña	97.6	-1.5	1.0	1.0
Comunitat Valenciana	96.6	-1.8	0.6	0.6
Extremadura	98.2	-2.1	1.2	1.2
Galicia	95.5	-1.8	-0.6	-0.6
Madrid, Comunidad de	93.1	-1.5	-0.1	-0.1
Murcia, Región de	92.6	-1.1	1.5	1.5
Navarra, Comunidad Foral de	94.8	-1.1	0.9	0.9
País Vasco	96.0	-1.2	0.1	0.1
Rioja, La	97.4	-0.9	-1.1	-1.1
Ceuta	100.5	-1.1	1.0	1.0
Melilla	102.3	0.8	0.8	0.8