

28 June 2017

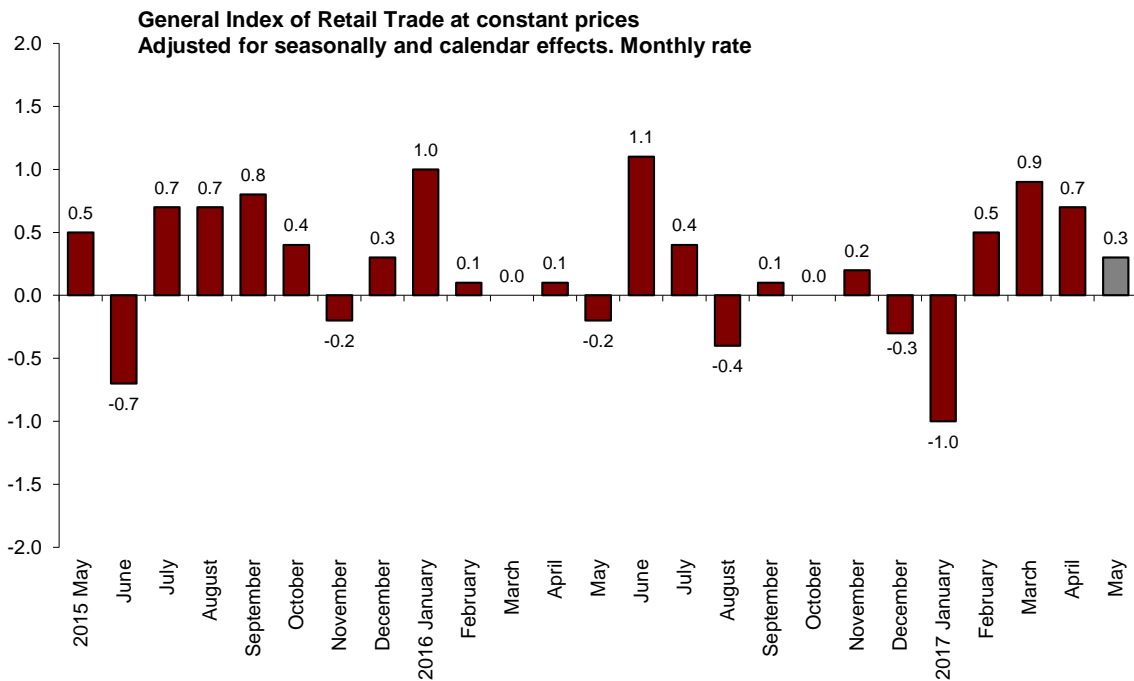
**Retail Trade Indices (RTI). Base 2010**  
*May 2017. Provisional data*

**The monthly variation of the Retail Trade Index at constant prices is 0.3% after adjusting for seasonal and calendar effects**

**The annual rate of the General Retail Trade Index at constant prices stands at 2.4% in the series adjusted for seasonal and calendar effects and at 3.8% in the original series**

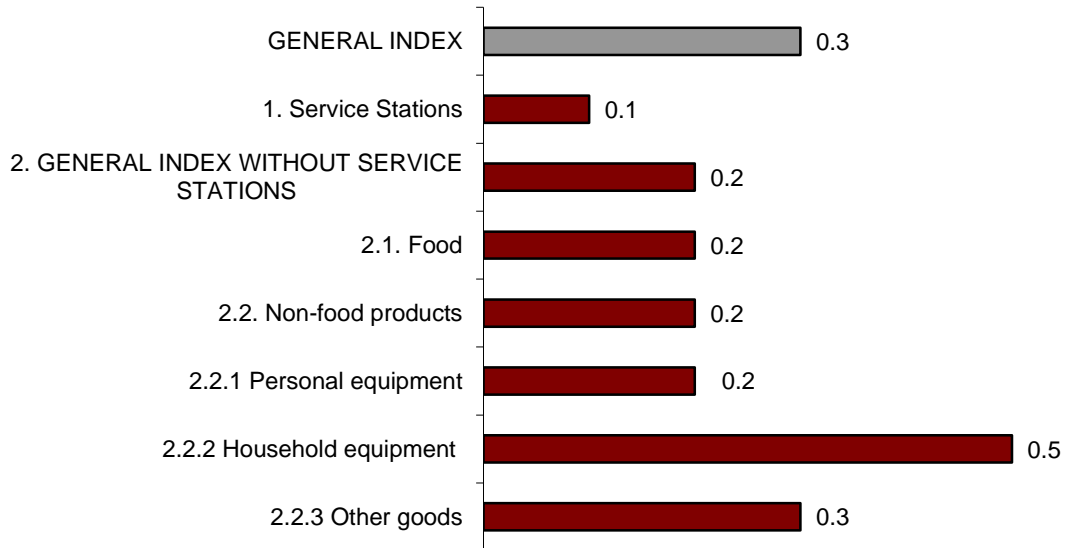
**Monthly evolution of sales in retail trade**

The monthly variation of the general Retail Trade Index (RTI) at constant prices between the months of May and April, after adjusting for seasonal and calendar effects was 0.3%. This rate is four tenths lower than that of the previous month.



The general index, excluding service stations, recorded a monthly rate of 0.2%. By products, both *Food* and *Non-food products* increased by 0.2%. If the latter is broken down by type of product, *Household equipment* presented the highest increase (0.5%).

**Sales Indices at constant prices: General and by type of products.  
Adjusted for seasonal and calendar effects. Monthly rate**



By distribution classes, *Department stores* registered the highest increase in monthly rate (0.6%). In turn, *Small chain stores* is the only one that showed a negative monthly rate (-0.4%).

**Sales indices at constant prices by distribution class  
Adjusted for seasonal and calendar effects. Monthly rate**

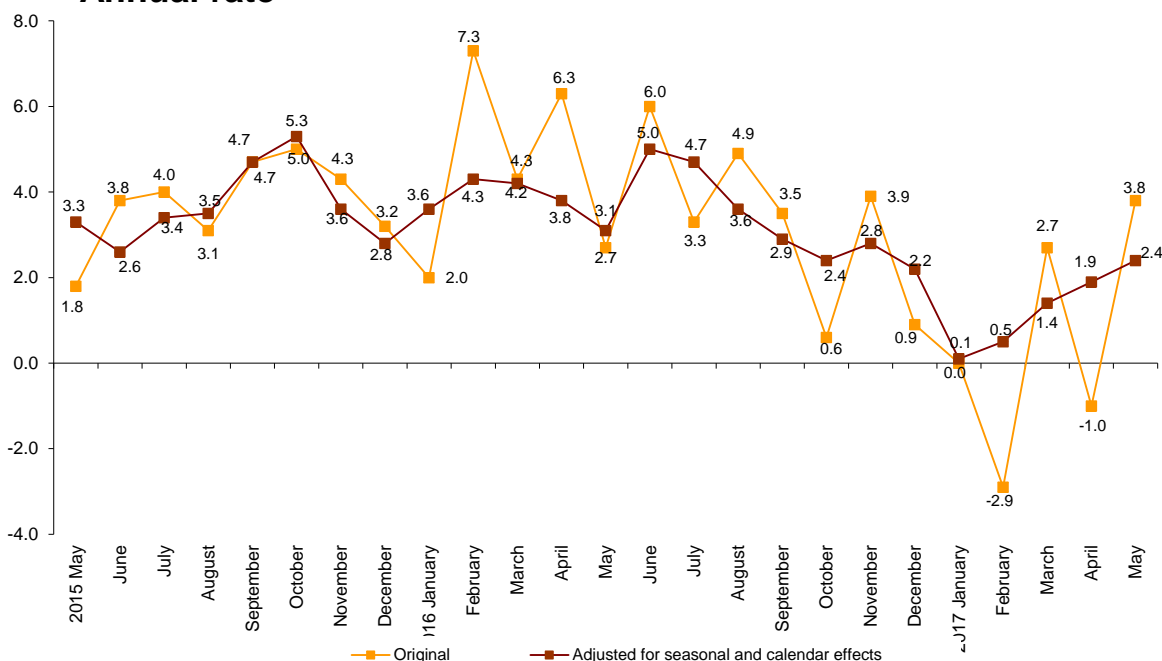


### Annual evolution of sales in retail trade

In May, the General Retail Trade Index registered a variation of 2.4% as compared with the same month of the previous year, after adjusting for seasonal and calendar effects. This rate is a half point higher than that registered in April.

The original series of the RTI at constant prices registered a 3.8% variation as compared to May 2016, which is 4.8 points above the rate of the previous month.

**Retail Trade General Index at constant prices**  
**Annual rate**



The general index excluding service stations and adjusted for seasonal and calendar effects registered an annual variation of 3.0% in May. If these sales are broken down by type of product, both *Food* and *Non-food products* increased by 3.2%.

### Retail trade sector sales. Annual rates at constant prices.

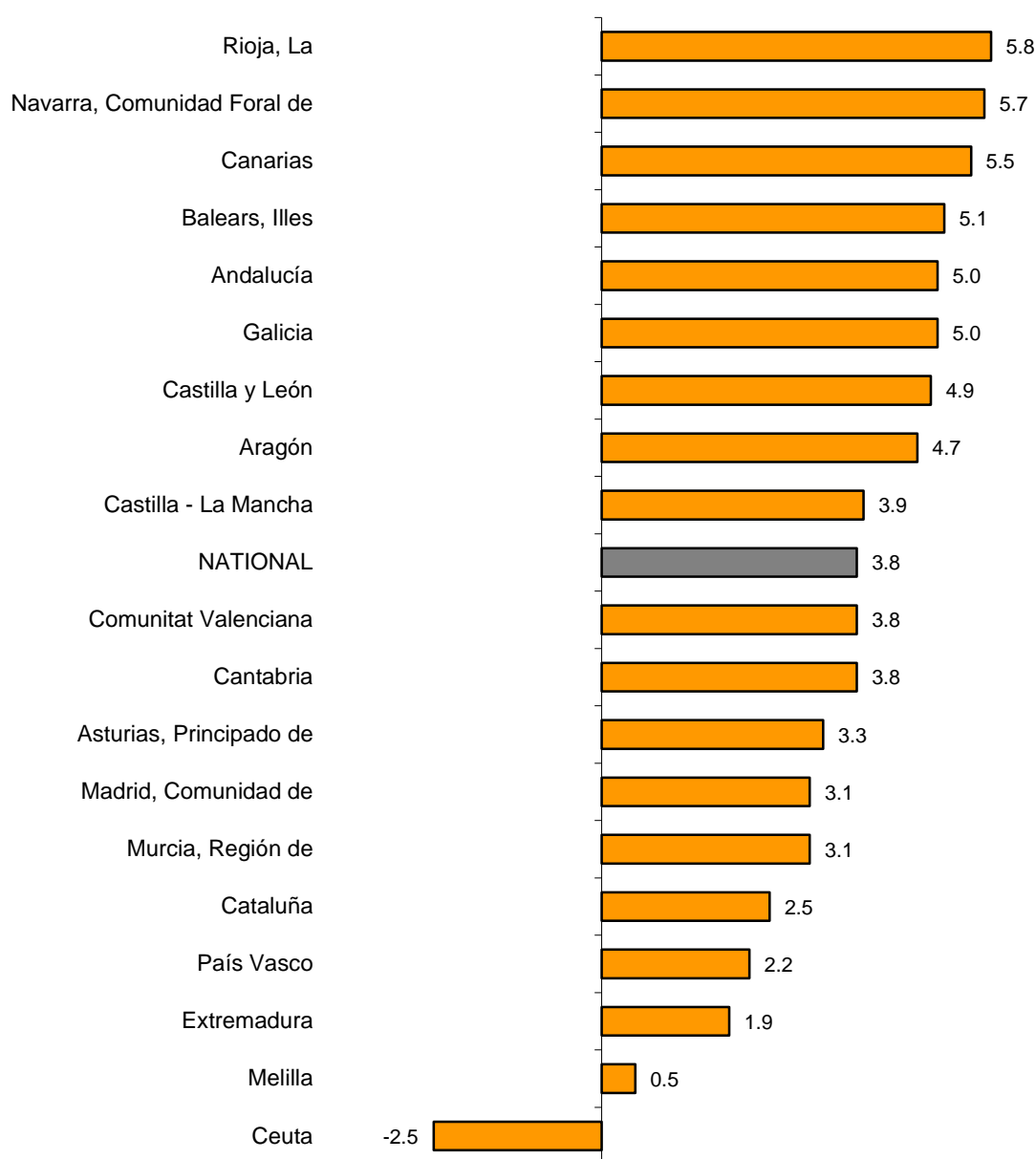
	Original Index	Seasonally adjusted index
	Annual rate (%)	Annual rate (%)
<b>GENERAL INDEX</b>	<b>3.8</b>	<b>2.4</b>
1. Service stations	2.0	1.4
2. GENERAL INDEX WITHOUT SERVICE STATIONS	3.9	3.0
2.1. Food	3.9	3.2
2.2. Non-food products	4.3	3.2
2.2.1 Personal equipment	8.4	7.4
2.2.2 Household equipment	6.5	4.9
2.2.3 Other goods	2.6	1.5
<b>DISTRIBUTION CLASS</b>		
3. Single retail stores	3.1	2.0
4. Small chain stores	1.6	0.7
5. Large chain stores	5.1	3.1
6. Department stores	4.3	2.9

**Results by autonomous communities. Annual variation rate in sales. Original series**

Retail sales increased in all Autonomous Communities as compared with May 2016. La Rioja (5.8%), Comunidad Foral de Navarra (5.7%) and Canarias (5.5%) presented the greatest increases.

In turn, Extremadura (1.9%), País Vasco (2.2%) and Cataluña (2.5%) registered the lowest increases.

**General Indices : National and by Autonomous City and Community  
Annual sales rate**



## Evolution of employment

In May, the employment index in the retail trade sector registered a variation of 2.0%, as compared to the same month of 2016. This rate is two tenths higher than that registered in April. Employment increased 2.1% in *Service stations*.

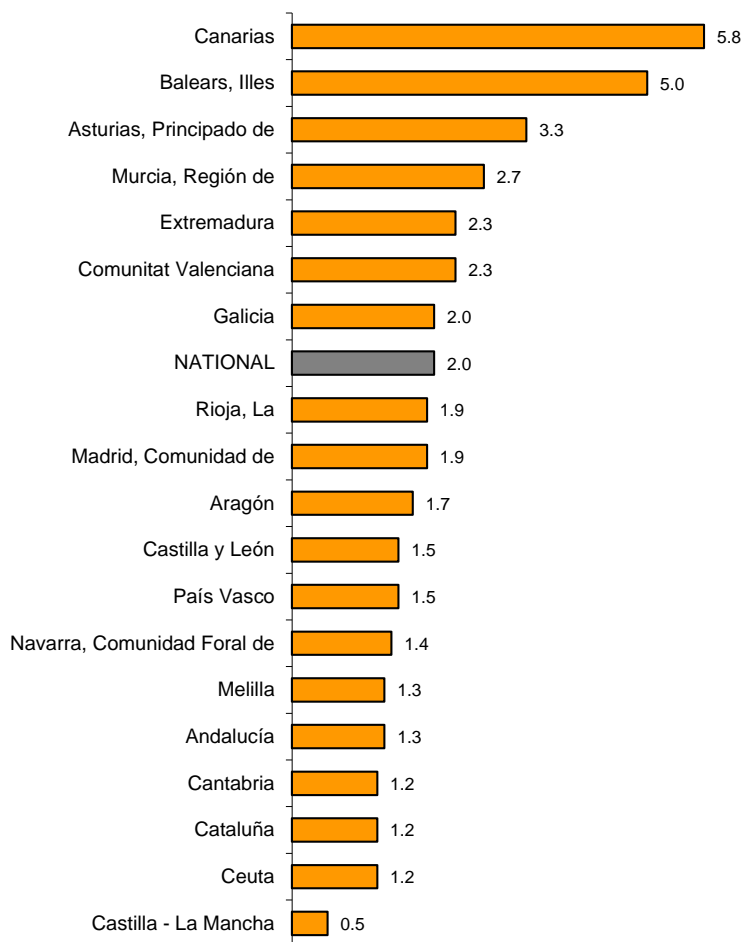
### Employment Indices: General and by distribution class

	Index	Rate (%)		
		Monthly	Annual	Year-to-date average
<b>GENERAL INDEX</b>	<b>99.3</b>	<b>0.4</b>	<b>2.0</b>	<b>1.9</b>
1. Service stations	95.2	0.8	2.1	1.9
2. GENERAL INDEX WITHOUT SERVICE STATIONS	99.4	0.4	1.9	1.8
2.1. Single retail stores	101.1	-0.2	0.8	1.1
2.2. Small chain stores	86.3	1.0	0.3	-0.1
2.3. Large chain stores	109.0	0.9	4.6	4.3
2.4. Department stores	96.6	0.8	4.1	2.9

### Results by Autonomous Community. Annual variation rates in employment

In May, employment in retail trade increased its annual rate in all Autonomous Communities. Canarias registered the greatest increase (5.8%).

**General Indices : National and by Autonomous City and Community. Employment Index. Annual Rate**



## Retail Trade Indices. Base 2010

May 2017

Provisional data

### 1. Sales indices: General, by products and by distribution class Adjusted for seasonal and calendar effects

	Index	Rate (%)		Year-to-date average	Deflated index	Rate (%)		
		Monthly	Annual			Monthly	Annual	Year-to-date average
<b>GENERAL INDEX</b>	<b>99.3</b>	<b>0.1</b>	<b>4.8</b>	<b>4.3</b>	<b>92.5</b>	<b>0.3</b>	<b>2.4</b>	<b>1.3</b>
1. Service stations	93.5	-2.2	6.6	13.8	90.1	0.1	1.4	1.6
2. GENERAL INDEX WITHOUT SERVICE STATIONS	99.6	0.3	4.2	3.4	92.4	0.2	3.0	1.4
2.1. Food	107.6	0.3	4.3	3.4	94.9	0.2	3.2	2.1
2.2. Non-food products	94.0	0.3	5.1	3.4	90.0	0.2	3.2	1.2
2.2.1 Personal equipment	98.6	0.2	7.8	4.9	97.0	0.2	7.4	4.3
2.2.2 Household equipment	90.9	0.5	4.6	3.1	89.1	0.5	4.9	3.5
2.2.3 Other goods	93.2	0.4	3.3	2.6	89.2	0.3	1.5	0.5
DISTRIBUTION CLASS								
3. Single retail stores	92.2	0.4	3.8	2.8	85.6	0.2	2.0	0.9
4. Small chain stores	91.7	-0.2	2.5	1.5	85.0	-0.4	0.7	-0.4
5. Large chain stores	116.6	0.5	4.8	3.8	108.5	0.6	3.1	1.8
6. Department stores	97.4	0.2	4.6	3.6	90.5	0.2	2.9	1.7

### 2. Sales indices: General, by products and by distribution class. Adjusted for calendar effects

	Index	Rate (%)		Deflated index	Rate (%)	
		Annual	Year-to-date average		Annual	Year-to-date average
<b>GENERAL INDEX</b>	<b>97.8</b>	<b>5.1</b>	<b>4.3</b>	<b>90.5</b>	<b>2.9</b>	<b>1.1</b>
1. Service stations	95.0	6.5	13.8	90.4	1.4	1.5
2. GENERAL INDEX WITHOUT SERVICE STATIONS	97.9	4.7	3.3	90.3	3.0	1.2
2.1. Food	106.3	4.3	3.4	93.8	3.1	2.1
2.2. Non-food products	92.3	5.1	3.2	87.3	3.2	0.8
2.2.1 Personal equipment	98.2	7.8	4.5	90.1	7.7	3.8
2.2.2 Household equipment	88.3	4.7	3.0	86.3	5.1	3.4
2.2.3 Other goods	91.0	3.3	2.4	86.2	1.5	0.1
DISTRIBUTION CLASS						
3. Single retail stores	93.6	3.8	2.7	86.3	2.0	0.7
4. Small chain stores	89.8	2.3	1.2	82.8	0.5	-0.8
5. Large chain stores	114.4	5.8	3.8	105.5	4.0	1.7
6. Department stores	89.3	5.5	3.4	82.3	3.8	1.3

### 3. Sales indices: General, by products and by distribution class Original Series

	Index	Rate (%)		Deflated index	Rate (%)	
		Annual	Year-to-date average		Annual	Year-to-date average
<b>GENERAL INDEX</b>	<b>98.3</b>	<b>6.0</b>	<b>3.8</b>	<b>91.0</b>	<b>3.8</b>	<b>0.6</b>
1. Service stations	95.3	7.1	13.4	90.7	2.0	0.8
<b>2. GENERAL INDEX WITHOUT SERVICE STATIONS</b>	<b>98.4</b>	<b>5.7</b>	<b>2.8</b>	<b>90.8</b>	<b>3.9</b>	<b>0.7</b>
2.1. Food	106.8	5.1	2.8	94.2	3.9	1.5
2.2. Non-food products	92.9	6.1	2.8	87.9	4.3	0.4
2.2.1 Personal equipment	98.6	8.5	4.1	90.5	8.4	3.4
2.2.2 Household equipment	89.0	6.1	2.5	87.0	6.5	2.8
2.2.3 Other goods	91.6	4.4	2.1	86.7	2.6	-0.3
<b>DISTRIBUTION CLASS</b>						
2.1. Single retail stores	94.2	4.9	2.3	86.8	3.1	0.2
2.2. Small chain stores	90.4	3.4	0.7	83.4	1.6	-1.3
2.3. Large chain stores	115.1	6.9	3.9	106.1	5.1	1.8
2.4. Department stores	89.6	6.1	3.0	82.6	4.3	0.9
2.4.1. Food	89.4	1.5	0.6	78.9	0.3	-0.7
2.4.2. Non-food products	89.5	8.4	4.1	84.7	6.6	1.6

### 4. Sales indices: National and by Autonomous City and Community Original Series

	Index	Rate (%)		Deflated index	Rate (%)	
		Annual	Year-to-date average		Annual	Year-to-date average
<b>NATIONAL</b>	<b>98.3</b>	<b>6.0</b>	<b>3.8</b>	<b>91.0</b>	<b>3.8</b>	<b>0.6</b>
Andalucía	94.0	7.2	3.5	87.0	5.0	0.3
Aragón	93.2	6.6	3.4	86.6	4.7	0.2
Asturias, Principado de	90.0	5.2	3.3	83.7	3.3	0.1
Balears, Illes	129.9	7.6	6.4	119.5	5.1	3.0
Canarias	104.7	7.7	5.6	100.2	5.5	3.0
Cantabria	97.3	6.0	3.1	89.5	3.8	-0.2
Castilla y León	95.5	7.4	3.9	88.3	4.9	0.2
Castilla - La Mancha	92.3	6.4	5.2	85.7	3.9	1.4
Cataluña	99.8	4.8	2.8	90.7	2.5	-0.7
Comunitat Valenciana	101.1	5.9	3.9	93.7	3.8	0.7
Extremadura	96.6	3.6	1.9	90.0	1.9	-0.9
Galicia	97.1	7.6	5.7	89.7	5.0	2.1
Madrid, Comunidad de	98.1	5.1	3.9	92.0	3.1	0.8
Murcia, Región de	91.9	5.0	3.7	84.6	3.1	0.6
Navarra, Comunidad Foral de	106.1	7.1	5.0	99.3	5.7	2.1
País Vasco	96.9	4.4	2.3	89.6	2.2	-0.9
Rioja, La	100.9	8.4	6.0	91.9	5.8	2.4
Ceuta	96.4	0.1	1.4	90.6	-2.5	-1.4
Melilla	97.3	2.7	1.3	92.7	0.5	-1.9

## 5. Employment Indices: General and by distribution class

	Index	Rate (%)		
		Monthly	Annual	Year-to-date average
<b>GENERAL INDEX</b>	<b>99.3</b>	<b>0.4</b>	<b>2.0</b>	<b>1.9</b>
1. Service stations	95.2	0.8	2.1	1.9
2. GENERAL INDEX WITHOUT SERVICE STATIONS	99.4	0.4	1.9	1.8
2.1. Single retail stores	101.1	-0.2	0.8	1.1
2.2. Small chain stores	86.3	1.0	0.3	-0.1
2.3. Large chain stores	109.0	0.9	4.6	4.3
2.4. Department stores	96.6	0.8	4.1	2.9

## 6. Employment Indices: National and by Autonomous City and Community

	Index	Rate (%)		
		Monthly	Annual	Year-to-date average
<b>NATIONAL</b>	<b>99.3</b>	<b>0.4</b>	<b>2.0</b>	<b>1.9</b>
Andalucía	94.5	0.5	1.3	1.3
Aragón	97.2	0.0	1.7	1.8
Asturias, Principado de	95.7	1.0	3.3	2.5
Balears, Illes	114.0	3.6	5.0	5.2
Canarias	107.3	0.3	5.8	5.5
Cantabria	100.9	0.9	1.2	1.2
Castilla y León	99.0	0.0	1.5	1.4
Castilla - La Mancha	99.1	0.0	0.5	0.5
Cataluña	101.7	0.4	1.2	1.4
Comunitat Valenciana	102.6	0.5	2.3	2.1
Extremadura	100.9	0.3	2.3	1.7
Galicia	99.1	0.7	2.0	1.6
Madrid, Comunidad de	96.2	-0.1	1.9	1.7
Murcia, Región de	95.9	0.3	2.7	2.3
Navarra, Comunidad Foral de	98.2	0.3	1.4	1.4
País Vasco	99.1	0.4	1.5	1.4
Rioja, La	100.7	0.2	1.9	1.6
Ceuta	101.2	0.0	1.2	0.5
Melilla	102.8	0.1	1.3	1.2