

29 July 2015

Retail Trade Indices (RTI). Base 2010
June 2015. *Provisional data*

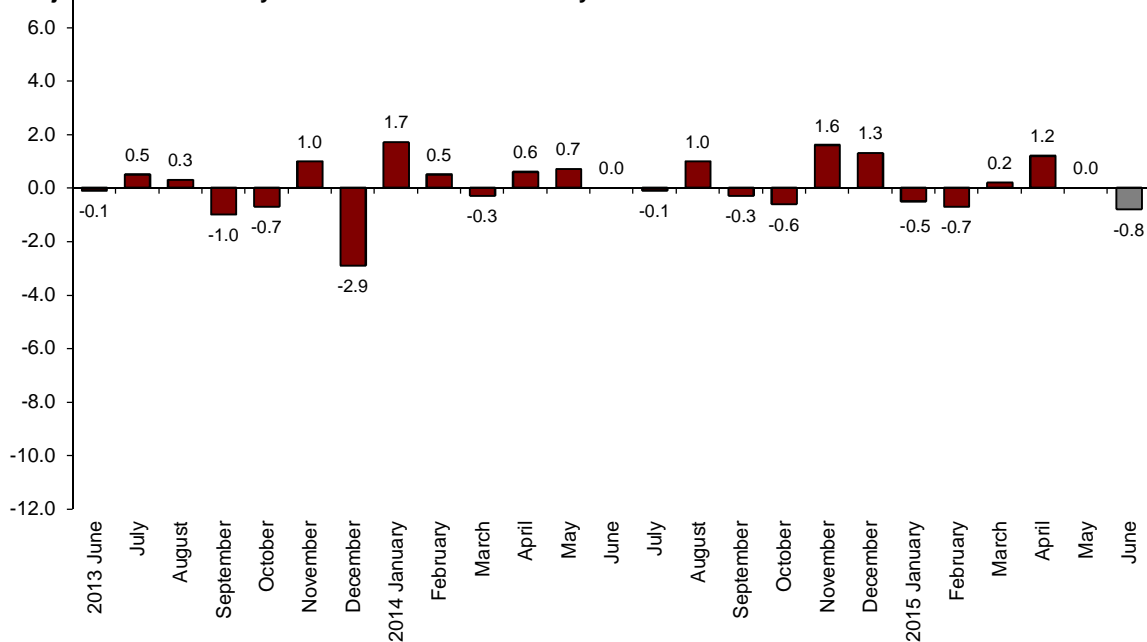
The monthly change of the Retail Trade Index at constant prices stands at -0.8% after adjusting for seasonal and calendar effects

The annual rate of the General Retail Trade Index at constant prices stands at 2.3% in the series adjusted for seasonal and calendar effects and at 3.8% in the original series

Monthly evolution of sales in Retail Trade

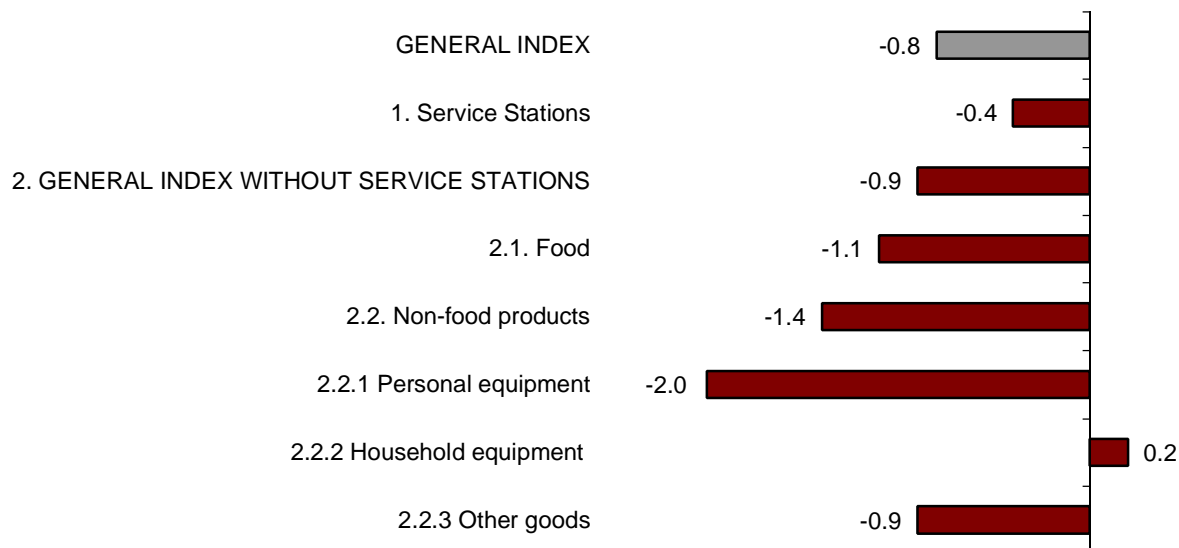
The monthly evolution of the General Retail Trade Index at constant prices between the months of June and May stood at -0.8% after adjusting for seasonal and calendar effects. This rate was eight tenths lower than that registered in the previous month.

General Index of Retail Trade at constant prices
Adjusted for seasonally and calendar effects. Monthly Rate



The general index, not including service stations, registered a monthly rate of -0.9% . By products, *Food* decreased by 1.1% and *Non-food products* did so by 1.4% . By type of product, *Household equipment* registered the only positive rate (0.2%).

**Sales Indices at constant prices: General and by type of products.
Adjusted for seasonal and calendar effects. Monthly rate**



All distribution class registered negatives rates as compared with the previous month. *Department stores* registered the smaller decrease (-0.4%).

**Sales indices at constant prices by distribution class
Adjusted for seasonal and calendar effects. Monthly rate**

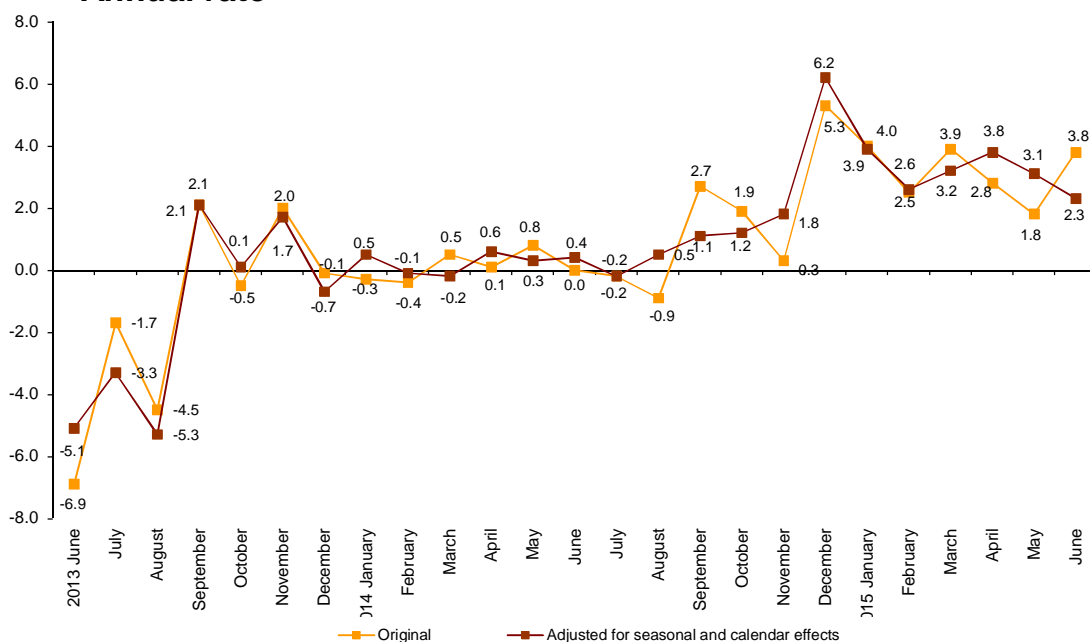


Annual evolution of sales in retail trade

In June, the General Retail Trade Index registered a variation of 2.3% as compared to the same month of 2014, after adjusting for seasonal and calendar effects. This annual rate was eight tenths lower than that registered in May.

The original series of the RTI at constant prices registered a 3.8% variation as compared to June 2014, standing two points over the rate of the previous month.

**Retail Trade General Index at constant prices
Annual rate**



The General Index, not including service stations, and after adjusting for seasonal and calendar effects, registered an annual change of 2.0% in June. By type of product, *Food* increased by 0.7% and *Non-food products* did so by 2.2%.

Retail trade sector sales. Annual rates at constant prices.

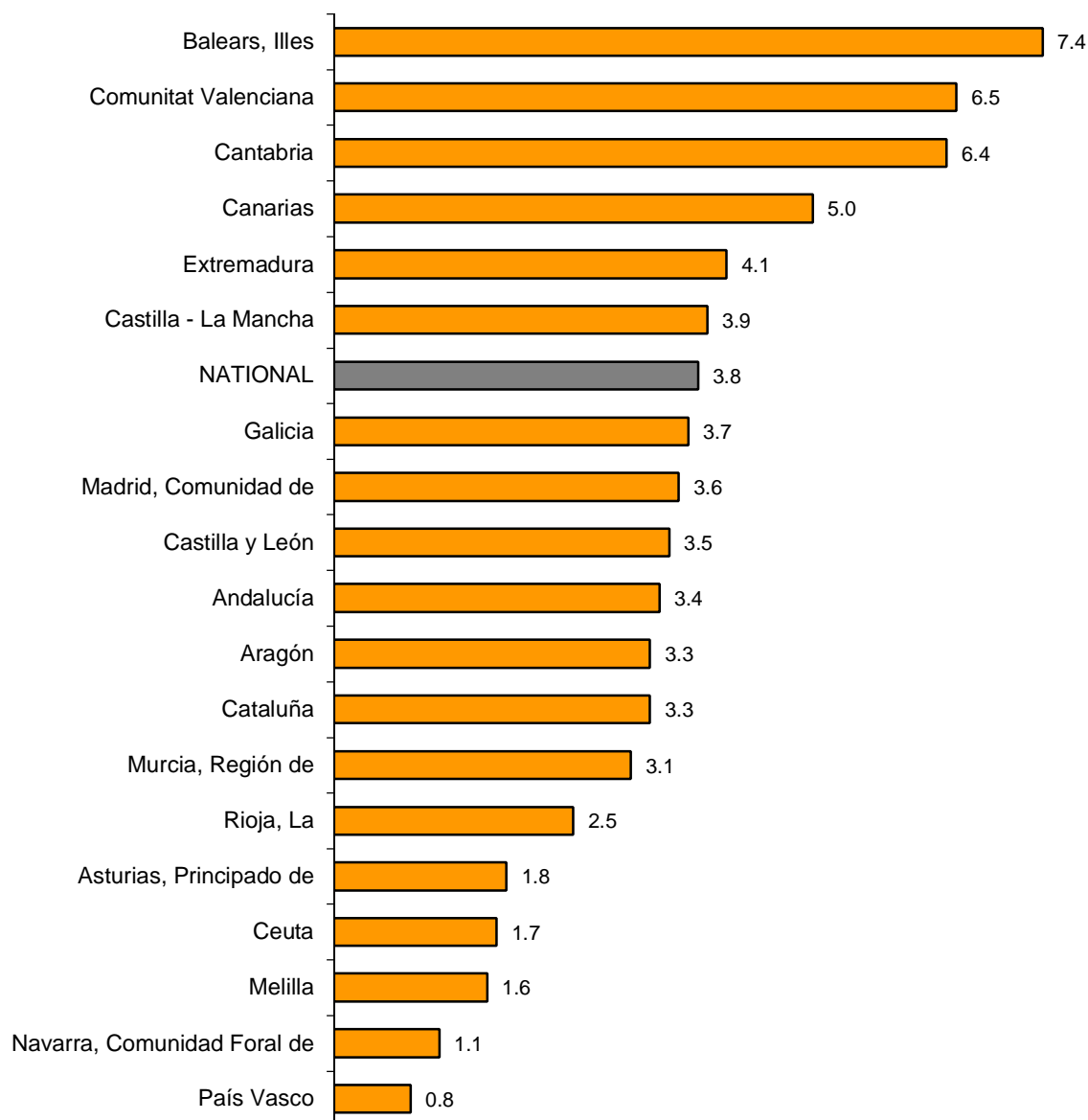
	Original Index	Seasonally adjusted index
	Annual rate (%)	Annual rate (%)
GENERAL INDEX	3.8	2.3
1. Service stations	6.4	5.2
2. GENERAL INDEX WITHOUT SERVICE STATIONS	3.5	2.0
2.1. Food	2.1	0.7
2.2. Non-food products	4.0	2.2
2.2.1 Personal equipment	2.1	1.1
2.2.2 Household equipment	5.4	2.7
2.2.3 Other goods	3.9	2.2
DISTRIBUTION CLASS		
3. Single retail stores	2.9	1.1
4. Small chain stores	2.2	0.3
5. Large chain stores	6.0	4.1
6. Department stores	5.3	4.8

Results by Autonomous Community. Annual variation rates in sales. Original series

In June, all the Autonomous Communities increased their sales as compared with the same month of 2014. Illes Belears (7.4%), Comunitat Valenciana (6.5%) and Cantabria (6.4%) registered the greatest increases.

In turn, País Vasco (0.8%), Comunidad Foral de Navarra (1.1%) and Principado de Asturias (1.8%) registered the greatest negative rates.

**General Indices : National and by Autonomous City and Community.
Annual sales rate**



Evolution of employment

In June, the employment index in the retail trade sector registered a variation of 1.0%, as compared to the same month of 2014. This rate was two tenths higher than that registered in May. In *Service stations*, employment decreased by 0.3%.

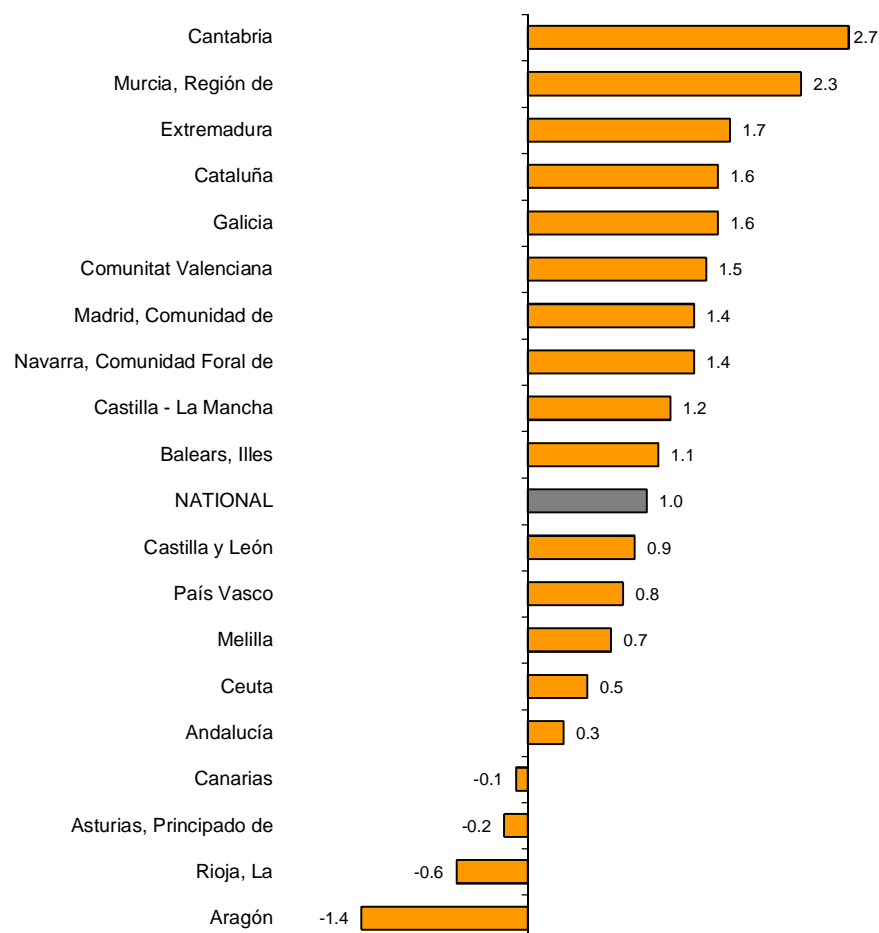
Employment Indices: General and by distribution class

	Index	Rate (%)		
		Monthly	Annual	Year-to-date average
GENERAL INDEX	97.2	1.2	1.0	0.8
1. Service stations	93.8	1.7	-0.3	-0.3
2. GENERAL INDEX WITHOUT SERVICE STATIONS	97.3	1.2	1.1	0.8
2.1. Single retail stores	99.9	0.3	1.7	2.0
2.2. Small chain stores	86.3	1.1	-0.9	-1.0
2.3. Large chain stores	103.2	2.6	1.0	-0.1
2.4. Department stores	94.1	3.1	2.0	0.9

Results by Autonomous Community. Annual variation rates in employment

In June, employment in retail trade increased its annual rate in 13 Autonomous Communities. Cantabria (2.7%) registered the greatest increase. In turn, Aragón (-1.4%) registered the greatest decrease.

General Indices : National and by Autonomous City and Community. Employment Index. Annual Rate



Retail Trade Indices. Base 2010

June 2015

Provisional data

1. Sales indices: General, by products and by distribution class Adjusted for seasonal and calendar effects

	Index	Rate (%)		Year-to-date average	Deflated index	Rate (%)		Year-to-date average
		Monthly	Annual			Monthly	Annual	
GENERAL INDEX	93.8	-0.4	1.5	1.4	86.7	-0.8	2.3	3.2
1. Service stations	99.7	-0.9	-3.9	-5.6	88.5	-0.4	5.2	6.4
2. GENERAL INDEX WITHOUT SERVICE STATIONS	93.2	-0.6	2.1	2.1	86.8	-0.9	2.0	2.7
2.1. Food	101.8	-0.9	2.4	1.4	91.9	-1.1	0.7	0.7
2.2. Non-food products	87.1	-1.0	1.7	2.6	82.5	-1.4	2.2	3.8
2.2.1 Personal equipment	89.8	-2.3	1.4	2.2	89.2	-2.0	1.1	2.1
2.2.2 Household equipment	82.8	0.2	2.5	4.0	81.0	0.2	2.7	4.4
2.2.3 Other goods	88.4	-0.5	1.7	2.3	83.6	-0.9	2.2	3.4
DISTRIBUTION CLASS								
3. Single retail stores	86.8	-0.5	1.3	2.3	80.9	-0.8	1.1	2.9
4. Small chain stores	88.8	-0.8	0.4	1.3	82.7	-1.0	0.3	1.9
5. Large chain stores	107.8	-1.5	4.2	3.4	100.4	-1.7	4.1	4.0
6. Department stores	91.4	-0.3	4.8	3.3	85.2	-0.4	4.8	3.9

2. Sales indices: General, by products and by distribution class. Adjusted for calendar effects

	Index	Rate (%)		Deflated index	Rate (%)	
		Annual	Year-to-date average		Annual	Year-to-date average
GENERAL INDEX	93.8	1.2	1.3	86.1	2.2	3.2
1. Service stations	101.4	-3.7	-5.6	88.9	5.3	6.4
2. GENERAL INDEX WITHOUT SERVICE STATIONS	93.2	2.0	2.1	86.2	1.8	2.7
2.1. Food	102.4	2.4	1.4	92.4	0.7	0.7
2.2. Non-food products	87.1	1.5	2.7	81.3	2.0	3.8
2.2.1 Personal equipment	88.4	1.1	2.3	82.7	0.6	2.2
2.2.2 Household equipment	85.3	2.6	4.0	83.2	2.8	4.4
2.2.3 Other goods	87.7	1.5	2.4	81.8	1.9	3.5
DISTRIBUTION CLASS						
3. Single retail stores	89.0	1.2	2.4	82.4	1.0	3.0
4. Small chain stores	89.6	0.3	1.3	82.9	0.1	1.8
5. Large chain stores	106.8	4.1	3.4	98.8	4.0	4.0
6. Department stores	86.5	4.4	3.2	80.0	4.2	3.8

3. Sales indices: General, by products and by distribution class Original Series

	Index	Rate (%)		Deflated index	Rate (%)	
		Annual	Year-to-date average		Annual	Year-to-date average
GENERAL INDEX	94.1	2.9	1.2	86.4	3.8	3.1
1. Service stations	101.6	-2.8	-5.6	89.1	6.4	6.4
2. GENERAL INDEX WITHOUT SERVICE STATIONS	93.5	3.7	2.1	86.5	3.5	2.6
2.1. Food	102.7	3.9	1.4	92.7	2.1	0.7
2.2. Non-food products	87.4	3.5	2.6	81.6	4.0	3.7
2.2.1 Personal equipment	88.7	2.6	2.2	83.0	2.1	2.1
2.2.2 Household equipment	85.7	5.2	3.9	83.5	5.4	4.3
2.2.3 Other goods	88.0	3.4	2.3	82.1	3.9	3.5
DISTRIBUTION CLASS						
2.1. Single retail stores	89.4	3.1	2.3	82.6	2.9	2.9
2.2. Small chain stores	90.0	2.4	1.2	83.2	2.2	1.8
2.3. Large chain stores	107.2	6.2	3.3	99.2	6.0	3.9
2.4. Department stores	86.7	5.4	3.2	80.2	5.3	3.8
2.4.1. Food	91.2	2.8	-1.0	82.3	1.0	-1.7
2.4.2. Non-food products	84.5	6.8	5.4	78.9	7.2	6.6

4. Sales indices: National and by Autonomous City and Community Original Series

	Index	Rate (%)		Deflated index	Rate (%)	
		Annual	Year-to-date average		Annual	Year-to-date average
NATIONAL	94.1	2.9	1.2	86.4	3.8	3.1
Andalucía	91.5	2.5	0.5	84.1	3.4	2.4
Aragón	89.2	2.1	-0.2	82.2	3.3	2.0
Asturias, Principado de	85.5	0.7	-2.4	78.7	1.8	-0.3
Balears, Illes	124.7	6.8	4.6	114.1	7.4	6.2
Canarias	96.4	3.7	1.4	91.4	5.0	3.8
Cantabria	94.8	5.4	3.4	86.5	6.4	5.6
Castilla y León	90.7	1.9	0.5	83.0	3.5	3.2
Castilla - La Mancha	89.9	2.5	-0.3	82.6	3.9	2.2
Cataluña	96.7	2.6	2.2	87.8	3.3	3.8
Comunitat Valenciana	97.1	5.8	3.0	88.8	6.5	4.9
Extremadura	95.7	2.6	-1.7	88.5	4.1	0.4
Galicia	91.4	2.6	1.1	84.1	3.7	3.1
Madrid, Comunidad de	92.5	2.8	1.7	85.6	3.6	3.6
Murcia, Región de	88.6	2.1	1.2	81.0	3.1	3.3
Navarra, Comunidad Foral de	97.7	-0.1	-0.1	90.5	1.1	2.1
País Vasco	91.6	0.3	-1.7	84.4	0.8	0.0
Rioja, La	91.3	1.9	-0.9	82.7	2.5	0.7
Ceuta	92.9	0.3	-0.1	87.9	1.7	1.8
Melilla	94.7	0.5	0.0	90.9	1.6	1.4

5. Employment Indices: General and by distribution class

	Index	Rate (%)		
		Monthly	Annual	Year-to-date average
GENERAL INDEX	97.2	1.2	1.0	0.8
1. Service stations	93.8	1.7	-0.3	-0.3
2. GENERAL INDEX WITHOUT SERVICE STATIONS	97.3	1.2	1.1	0.8
2.1. Single retail stores	99.9	0.3	1.7	2.0
2.2. Small chain stores	86.3	1.1	-0.9	-1.0
2.3. Large chain stores	103.2	2.6	1.0	-0.1
2.4. Department stores	94.1	3.1	2.0	0.9

6. Employment Indices: National and by Autonomous City and Community

	Index	Rate (%)		
		Monthly	Annual	Year-to-date average
NATIONAL	97.2	1.2	1.0	0.8
Andalucía	93.2	0.9	0.3	0.7
Aragón	95.0	1.1	-1.4	-1.1
Asturias, Principado de	92.9	1.0	-0.2	-0.5
Balears, Illes	107.3	2.5	1.1	1.6
Canarias	100.7	0.7	-0.1	-0.2
Cantabria	99.9	1.6	2.7	2.0
Castilla y León	97.8	1.6	0.9	0.6
Castilla - La Mancha	98.3	0.6	1.2	1.2
Cataluña	100.7	2.0	1.6	1.3
Comunitat Valenciana	99.2	1.3	1.5	0.9
Extremadura	99.2	1.3	1.7	1.4
Galicia	97.5	1.2	1.6	0.9
Madrid, Comunidad de	94.0	0.7	1.4	0.7
Murcia, Región de	94.1	1.3	2.3	1.9
Navarra, Comunidad Foral de	96.2	0.9	1.4	1.3
País Vasco	97.2	1.1	0.8	0.3
Rioja, La	97.9	1.2	-0.6	-1.0
Ceuta	100.0	1.7	0.5	0.6
Melilla	100.9	0.9	0.7	0.6