

27 September 2013

Retail Trade Indices (RTI). Base 2010
August 2013 *Provisional data*

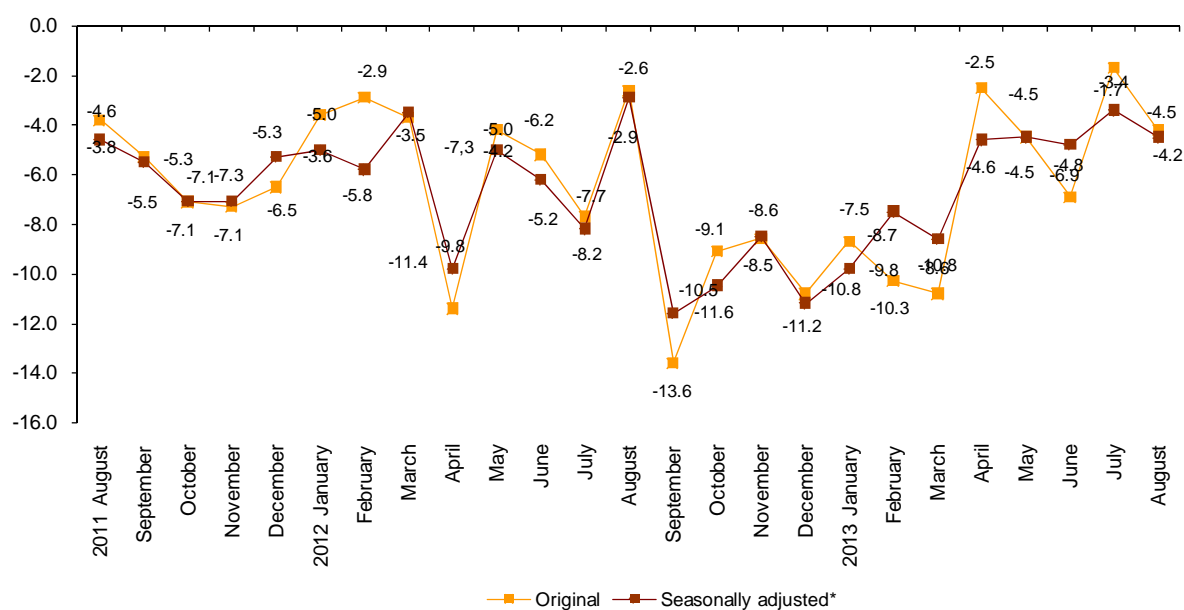
The General Retail Trade Index at constant prices stands at -4.5% in the adjusted for calendar and seasonal effects series and at 4.2% in the original series

The monthly change adjusted for the calendar and seasonal effects stands at 3.5%

The General Retail Trade Index annual change at constant prices stood at -4.2% in August, that is, two points and a half lower than that registered in July.

After adjusting the calendar and seasonal effects, the annual change registered a -4.5% variation, one point and a tenth lower than the rate registered in July.

Retail Trade General Index at constant prices
Annual rate



* Seasonally adjusted: Adjusted for seasonal and calendar effects.

Annual evolution of trade, by products

Retail sales, not including service stations, registered an annual change of -4.2% at constant prices. Breaking down the sales by type of product, we can observe that *Food* decreased 2.2% and *Non-food products* did so by 7.1%.

After adjusting the calendar and seasonal effects, all products registered negative rates, as compared with the same month of the previous year.

Annual rates of the national index at constant prices, by product

	Original index	Seasonally adjusted index
	Annual rate (%)	Annual rate (%)
GENERAL INDEX	-4.2	-4.5
1. Service stations	-4.4	-4.8
2. GENERAL INDEX WITHOUT SERVICE	-4.2	-5.1
2.1. Food	-2.2	-2.3
2.2. Non-food products	-7.1	-8.1
2.2.1 Personal equipment	0.0	-2.3
2.2.2 Household equipment	-15.2	-15.8
2.2.3 Other goods	-5.9	-6.9

Annual evolution of trade, by distribution class

Large chain stores (0.6%) was the only distribution class that increased its rates as compared with August 2012. *Department stores* (-10.0%) and *Small chain stores* (-6.9%) registered the greatest decreases.

After adjusting the calendar and seasonal effects, all distribution classes registered negative rates, except *Large chain stores* (0.5%).

Annual rates of the national index at constant prices, by distribution class

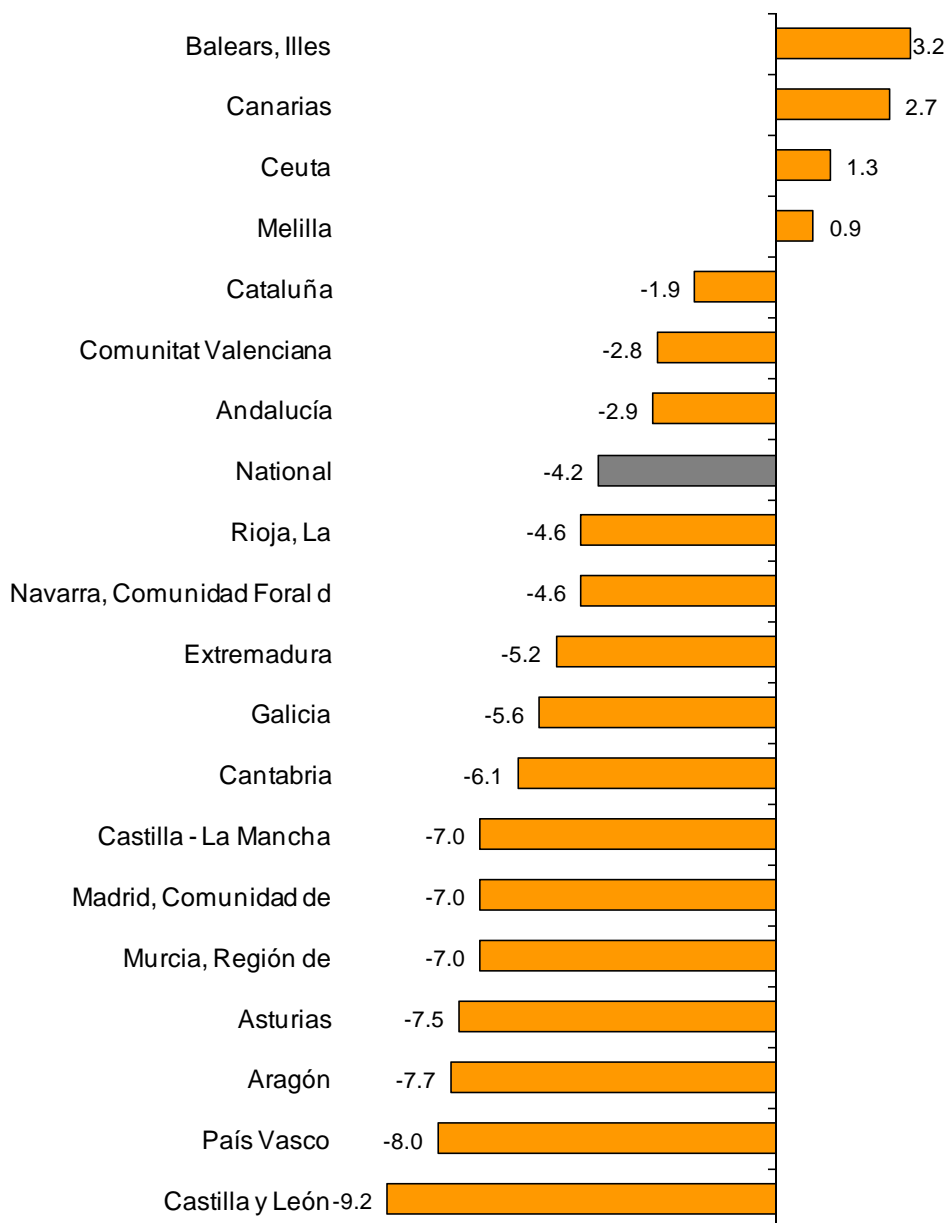
	Original index	Seasonally adjusted index
	Annual rate (%)	Annual rate (%)
GENERAL INDEX	-4.2	-4.5
1. Service stations	-4.4	-4.8
2. GENERAL INDEX WITHOUT SERVICE	-4.2	-5.1
2.1. Single retail stores	-4.2	-4.9
2.2. Small chain stores	-6.9	-7.5
2.3. Large chain stores	0.6	0.5
2.4. Department stores	-10.0	-11.1

Results by Autonomous Community. Variation rates in sales

Illes Balears (3.2%) and Canarias (2.7%) were the only Autonomous Communities that registered positive annual rates in retail sales in August.

In turn, Castilla y León (-9.2%) País Vasco (-8.0%) and Aragón (-7.7%) registered the greatest decreases.

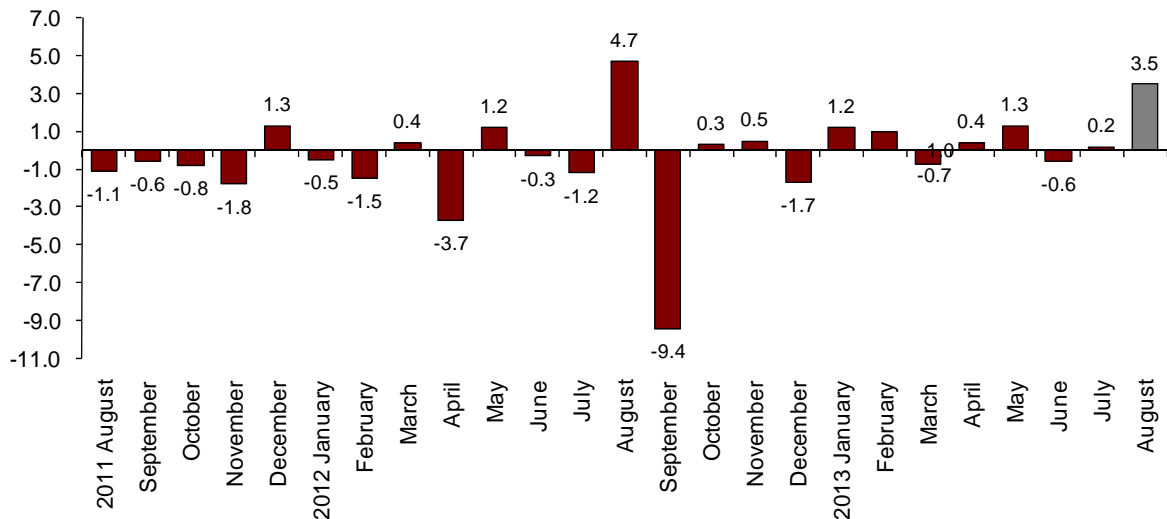
General Index by Autonomous City and Community. Annual sales rate



Monthly evolution of the RTI adjusted for the calendar and seasonal effects

The monthly change of the Retail Trade General Index between the months of August and July, after adjusting the calendar and seasonal effects was 3.5%. This rate was 3.3 points higher than that registered in July.

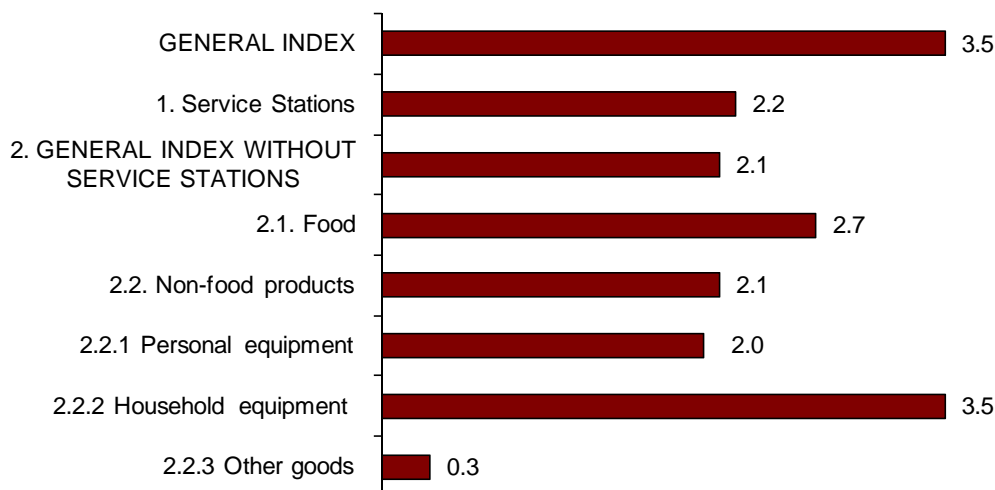
General Index of Retail Trade at constant prices Adjusted for seasonally and calendar effects. Monthly Rate



Monthly evolution of trade, by products

After adjusting the calendar and seasonal effects, the general index without service stations registered a monthly rate of 0.0%. By products, *Food* increased 2.7% and *Non-food products* did so by 2.1%. Within the Non-food products, Household equipment registered the greatest increase with a rate of 3.5%.

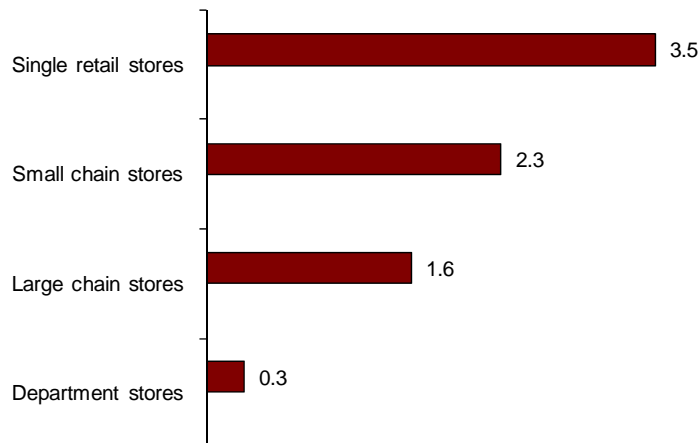
General Index by type of products at constant prices. Adjusted for seasonal and calendar effects. Monthly rate



Monthly evolution of trade, by distribution class

After adjusting for calendar and seasonal effects, all distribution classes increases their sales as compared with the previous month. Single retail stores had the greatest increase, with a rate of 3.5%.

General Index by distribution class at constant prices. Adjusted for seasonal and calendar effects. Monthly rate



Evolution of employment

The employment index in the Retail Trade sector in August registered an annual rate of – 1.9%, as compared with the same month of 2012. This rate stood two tenths lower than that registered in July.

Employment decreased by 4.1% in *Service stations*.

All distribution classes registered negative rates, Small chain stores (–4.7%) and Department stores (–3.7%) registered the greatest decreases, as compared with August 2012.

Employment National Indices by distribution class

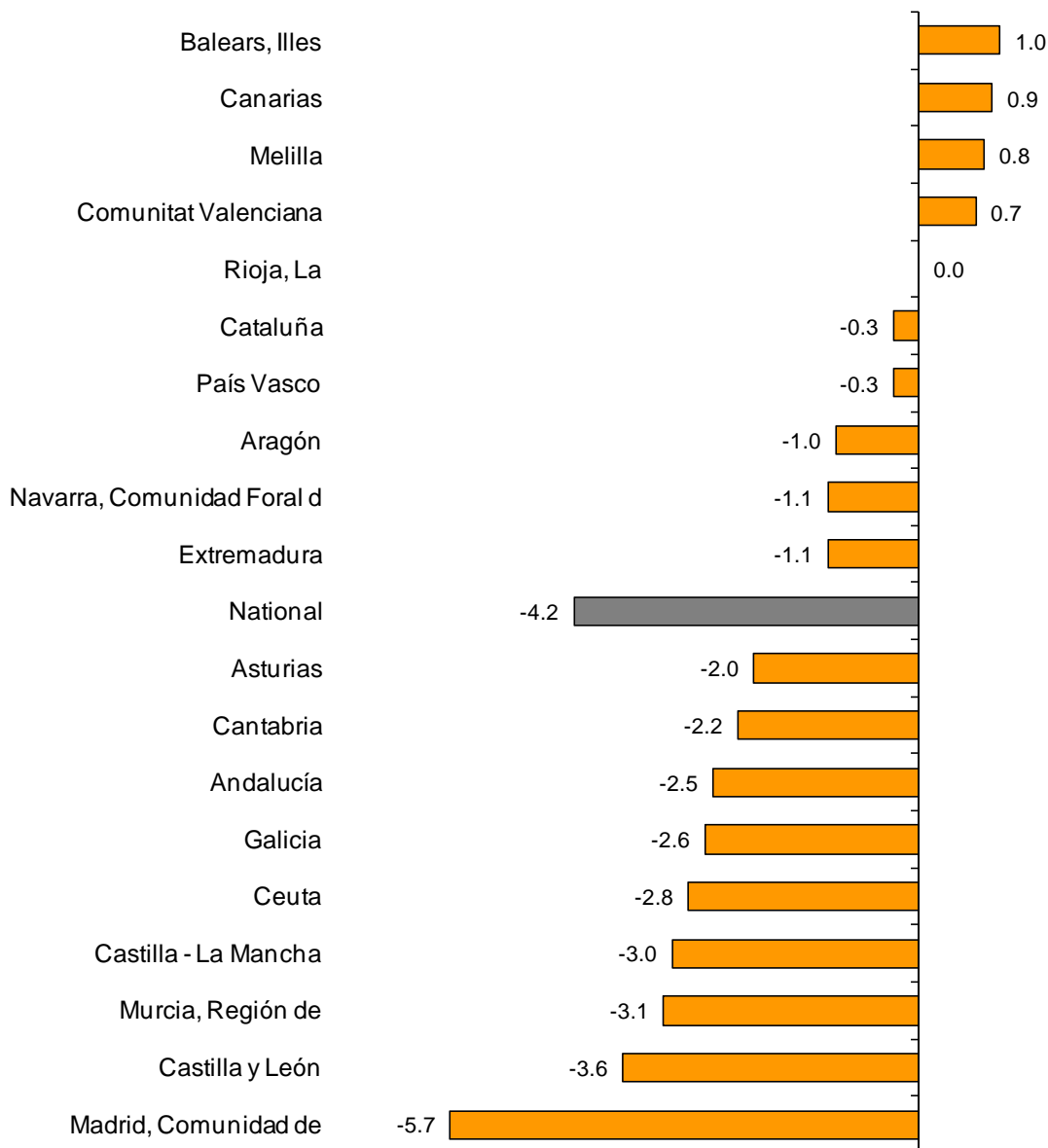
	Index	Rate (%)	
		Monthly	Annual
GENERAL INDEX	96.8	0.1	-1.9
1. Service stations	97.3	0.3	-4.1
2. GENERAL INDEX WITHOUT SERVICE STATIONS	96.8	0.1	-1.8
2.1. Single retail stores	98.2	0.6	-0.7
2.2. Small chain stores	88.4	-0.5	-4.7
2.3. Large chain stores	102.9	-0.5	-0.7
2.4. Department stores	93.7	0.1	-3.7

Results by Autonomous Community. Employment variation rates

Employment in Retail Trade decreased its annual rate in all Autonomous Communities, except in Illes Balears (1.0%), Canarias (0.9%) and Comunitat Valenciana (0.7%). The rate in La Rioja remained the same (0.0%).

Comunidad de Madrid (–5.7%), Castilla y León (–3.6%) and Región de Murcia (–3.1%) registered the greatest decreases.

General Index by Autonomous City and Community Employment Index. Annual Rate



Retail Trade Indices. Base 2010 August 2013

Provisional data

1. National indices by product

	Index	Rate (%)			Deflated index	Rate (%)		
		Monthly	Annual	Year-to-date average		Monthly	Annual	Year-to-date average
GENERAL INDEX	91.6	-8.9	-3.0	-4.0	84.7	-9.1	-4.2	-6.2
1. Service stations	110.0	-1.3	-6.1	-4.9	86.8	-1.9	-4.4	-5.8
2. GENERAL INDEX WITHOUT SERVICE STATIONS	89.8	-9.8	-2.7	-3.9	84.7	-9.8	-4.2	-6.3
2.1. Food	106.1	-0.6	2.3	-0.4	95.5	-1.0	-2.2	-4.1
2.2. Non-food products	79.1	-16.5	-6.6	-6.5	76.1	-16.4	-7.1	-8.3
2.2.1 Personal equipment	80.2	-22.6	-0.4	-6.3	87.4	-21.7	0.0	-6.3
2.2.2 Household equipment	75.6	-14.6	-14.1	-9.0	73.8	-14.6	-15.2	-10.2
2.2.3 Other goods	80.6	-13.1	-5.3	-4.9	77.5	-13.0	-5.9	-6.8

2. National indices by distribution class

	Index	Rate (%)			Deflated index	Rate (%)		
		Monthly	Annual	Year-to-date average		Monthly	Annual	Year-to-date average
GENERAL INDEX	91.6	-8.9	-3.0	-4.0	84.7	-9.1	-4.2	-6.2
1. Service stations	110.0	-1.3	-6.1	-4.9	86.8	-1.9	-4.4	-5.8
2. GENERAL INDEX WITHOUT SERVICE STATIONS	89.8	-9.8	-2.7	-3.9	84.7	-9.8	-4.2	-6.3
2.1. Single retail stores	80.9	-12.3	-2.6	-6.1	76.4	-12.3	-4.2	-8.4
2.2. Small chain stores	85.0	-12.1	-5.4	-5.2	80.2	-12.2	-6.9	-7.5
2.3. Large chain stores	107.9	-5.2	2.3	0.9	101.8	-5.3	0.6	-1.5
2.4. Department stores	86.8	-10.7	-8.6	-4.9	81.9	-10.7	-10.0	-7.2

3. Department Stores Indices

	Index	Rate (%)			Deflated index	Rate (%)		
		Monthly	Annual	Year-to-date average		Monthly	Annual	Year-to-date average
DEPARTMENT STORES INDICES	86.8	-10.7	-8.6	-4.9	81.9	-10.7	-10.0	-7.2
1. Food	98.0	1.3	-0.8	-0.6	88.2	0.9	-5.2	-4.2
2. Non-food products	81.4	-16.5	-12.5	-7.1	78.3	-16.5	-13.0	-8.9

4. National indices adjusted for the calendar effect

	Index	Rate (%)			Deflated index	Rate (%)		
		Monthly	Annual	Year-to-date average		Monthly	Annual	Year-to-date average
GENERAL INDEX	91.1	-8.7	-3.0	-3.8	84.1	-8.8	-4.2	-6.0
1. Service stations	109.7	-1.2	-6.1	-4.7	86.6	-1.8	-4.4	-5.5
2. GENERAL INDEX WITHOUT SERVICE STATIONS	89.2	-9.5	-2.7	-3.7	84.1	-9.6	-4.2	-6.0
2.1. Food	105.5	-0.3	2.3	-0.2	95.0	-0.8	-2.2	-3.8
2.2. Non-food products	78.5	-16.2	-6.6	-6.2	75.5	-16.1	-7.1	-8.0
2.2.1 Personal equipment	79.7	-22.4	-0.4	-6.1	86.8	-21.4	0.0	-6.1
2.2.2 Household equipment	74.9	-14.3	-14.1	-8.7	73.1	-14.2	-15.2	-9.9
2.2.3 Other goods	80.0	-12.8	-5.3	-4.7	77.0	-12.7	-5.9	-6.6
DISTRIBUTION CLASS								
3. Single retail stores	80.3	-12.0	-2.6	-6.0	75.8	-12.0	-4.2	-8.2
4. Small chain stores	84.2	-11.8	-5.4	-4.9	79.5	-11.8	-6.9	-7.2
5. Large chain stores	107.0	-4.9	2.3	1.2	101.0	-4.9	0.6	-1.2
6. Department stores	86.4	-10.5	-8.6	-4.7	81.5	-10.5	-10.0	-7.0

5. National Indices adjusted for the calendar and seasonal effects

	Index	Rate (%)			Deflated index	Rate (%)		
		Monthly	Annual	Year-to-date average		Monthly	Annual	Year-to-date average
GENERAL INDEX	95.9	3.8	-3.3	-3.8	87.4	3.5	-4.5	-6.0
1. Service stations	106.5	3.0	-6.2	-4.8	84.6	2.2	-4.8	-5.6
2. GENERAL INDEX WITHOUT SERVICE STATIONS	92.6	2.1	-3.5	-3.7	86.2	2.1	-5.1	-6.1
2.1. Food	101.9	0.7	1.7	-0.3	93.3	2.7	-2.3	-3.8
2.2. Non-food products	85.3	1.8	-7.7	-6.3	80.5	2.1	-8.1	-8.1
2.2.1 Personal equipment	87.7	2.5	-2.2	-6.1	86.9	2.0	-2.3	-6.1
2.2.2 Household equipment	80.6	3.6	-14.6	-8.8	78.0	3.5	-15.8	-10.0
2.2.3 Other goods	86.7	0.3	-6.4	-5.2	81.7	0.3	-6.9	-7.0
DISTRIBUTION CLASS								
3. Single retail stores	88.9	3.4	-3.4	-6.0	82.9	3.5	-4.9	-8.3
4. Small chain stores	88.1	2.3	-5.9	-5.0	82.0	2.3	-7.5	-7.3
5. Large chain stores	106.2	2.0	2.2	1.2	98.5	1.6	0.5	-1.3
6. Department stores	85.9	-0.6	-5.9	-4.3	81.1	0.3	-11.1	-6.9

6. Retail Trade General Index Adjusted for the calendar and seasonal effect

		Rate (%)					
		Annual ¹		Quarterly ²		Monthly ³	
		Current prices	Constant prices	Current prices	Constant prices	Current prices	Constant prices
	2009	-7.1	-5.5				
	2010	0.7	-1.7				
	2011	-1.6	-5.6				
	2012	-4.4	-7.3				
	2013	-3.8	-6.0				
2011	TIII	-0.7	-4.7	-0.6	-0.7		
	TIV	-3.2	-6.5	-1.5	-2.3		
2012	TI	-2.4	-4.8	-0.2	-1.0		
	TII	-4.6	-7.1	-2.4	-3.3		
	TIII	-4.0	-7.6	0.1	-1.2		
	TIV	-6.6	-10.1	-4.2	-4.9		
2013	TI	-5.6	-8.6	0.8	0.6		
	TII	-2.8	-4.7	0.6	0.9		
	TIII	-2.5	-4.0	2.6	2.0		
2012	AGO	0.9	-2.9			5.6	4.7
	SEP	-7.6	-11.6			-8.8	-9.4
	OCT	-6.7	-10.5			0.5	0.3
	NOV	-5.1	-8.5			0.3	0.5
	DIC	-7.9	-11.2			-1.7	-1.7
2013	ENE	-6.7	-9.8			1.2	1.2
	FEB	-4.4	-7.5			1.3	1.0
	MAR	-5.9	-8.6			-0.8	-0.7
	ABR	-3.3	-4.6			-0.3	0.4
	MAY	-2.8	-4.5			1.5	1.3
	JUN	-2.4	-4.8			-0.3	-0.6
	JUL	-1.7	-3.4			0.3	0.2
	AGO	-3.3	-4.5			3.8	3.5

Note:

¹ **Annual rate:** Variation of a period as compared with the same period of the previous year

² **Quarterly rate:** Variation of a quarter as compared with the previous quarter.

In the current quarter it is the quarter-to-date as compared with the previous quarter

³ **Monthly rate:** Variation of a month as compared with the previous month

7. Employment National Indices by distribution class

	Index	Rate (%)		
		Monthly	Annual	Year-to-date average
GENERAL INDEX	96.8	0.1	-1.9	-2.0
1. Service stations	97.3	0.3	-4.1	-3.8
2. GENERAL INDEX WITHOUT SERVICE STATIONS	96.8	0.1	-1.8	-2.0
2.1. Single retail stores	98.2	0.6	-0.7	-1.2
2.2. Small chain stores	88.4	-0.5	-4.7	-4.9
2.3. Large chain stores	102.9	-0.5	-0.7	-0.2
2.4. Department stores	93.7	0.1	-3.7	-3.6

8. General index of retail trad by Autonomous City and Community

	Index	Rate (%)			Deflated index	Rate (%)		
		Monthly	Annual	Year-to-date average		Monthly	Annual	Year-to-date average
NATIONAL INDEX	91.6	-8.9	-3.0	-4.0	84.7	-9.1	-4.2	-6.2
Andalucía	91.9	-6.7	-1.5	-3.4	85.0	-6.9	-2.9	-5.6
Aragón	89.1	-8.3	-6.7	-4.3	82.5	-8.5	-7.7	-6.3
Asturias, Principado de	92.9	-5.0	-6.2	-4.6	85.8	-5.2	-7.5	-6.8
Balears, Illes	130.3	-2.2	4.3	2.8	120.4	-1.9	3.2	0.5
Canarias	96.6	-3.1	2.3	-1.4	91.3	-3.2	2.7	-2.7
Cantabria	106.7	2.5	-4.3	-4.3	96.9	2.5	-6.1	-7.6
Castilla y León	98.8	-1.9	-8.0	-5.5	90.2	-2.0	-9.2	-7.8
Castilla - La Mancha	89.7	-5.3	-5.9	-4.5	82.3	-5.4	-7.0	-6.7
Cataluña	92.9	-12.3	-0.7	-3.8	85.3	-12.3	-1.9	-6.3
Comunitat Valenciana	96.1	-6.8	-1.5	-4.0	88.7	-7.0	-2.8	-6.2
Extremadura	101.0	-2.5	-4.0	-3.6	93.3	-2.5	-5.2	-5.9
Galicia	101.5	-1.1	-4.2	-5.9	93.9	-1.2	-5.6	-8.0
Madrid, Comunidad de	74.4	-20.5	-6.0	-4.5	68.9	-20.6	-7.0	-6.4
Murcia, Región de	88.0	-6.9	-5.0	-5.8	80.9	-7.1	-7.0	-8.5
Navarra, Comunidad Foral de	99.9	-2.2	-4.0	-3.3	92.8	-2.0	-4.6	-5.3
País Vasco	81.1	-15.3	-6.5	-6.1	75.4	-15.5	-8.0	-8.1
Rioja, La	96.3	-3.7	-3.4	-3.7	88.6	-3.9	-4.6	-5.9
Ceuta	90.9	-8.5	1.4	-1.4	86.8	-8.6	1.3	-2.3
Melilla	94.2	-2.8	0.3	-3.2	91.1	-2.9	0.9	-3.6

9. General index without service stations by Autonomous City and Community

	Index	Rate (%)			Deflated index	Rate (%)		
		Monthly	Annual	Year-to-date average		Monthly	Annual	Year-to-date average
NATIONAL INDEX	89.8	-9.8	-2.7	-3.9	84.7	-9.8	-4.2	-6.3
Andalucía	90.0	-7.3	-0.9	-3.0	85.2	-7.4	-2.7	-5.4
Aragón	86.3	-9.6	-7.3	-4.5	81.3	-9.7	-8.7	-6.7
Asturias, Principado de	91.0	-5.9	-6.4	-4.8	85.7	-6.1	-7.8	-7.0
Balears, Illes	128.9	-2.7	4.5	2.8	122.5	-2.3	3.0	0.5
Canarias	94.0	-2.9	2.8	-2.6	92.4	-2.9	2.7	-3.3
Cantabria	103.0	1.5	-5.6	-5.5	95.9	1.6	-7.8	-8.7
Castilla y León	97.3	-3.5	-8.1	-5.5	90.7	-3.6	-9.6	-7.9
Castilla - La Mancha	87.8	-6.1	-5.6	-3.8	82.1	-6.2	-7.1	-6.2
Cataluña	91.0	-13.3	0.6	-3.4	85.1	-13.2	-1.1	-6.3
Comunitat Valenciana	94.8	-7.0	-1.4	-3.8	89.5	-7.2	-3.1	-6.2
Extremadura	97.7	-3.3	-2.8	-3.1	92.2	-3.3	-4.4	-5.6
Galicia	99.6	-1.6	-4.2	-6.2	94.0	-1.6	-5.9	-8.4
Madrid, Comunidad de	74.1	-21.3	-5.8	-4.3	70.1	-21.3	-7.1	-6.4
Murcia, Región de	84.0	-8.7	-5.2	-6.0	79.2	-8.8	-7.4	-8.8
Navarra, Comunidad Foral de	97.3	-2.4	-2.8	-2.5	92.2	-2.2	-3.7	-4.6
País Vasco	79.1	-16.2	-6.9	-6.5	74.8	-16.3	-8.7	-8.7
Rioja, La	95.4	-4.4	-3.0	-3.6	89.2	-4.4	-4.4	-6.0
Ceuta	88.3	-8.9	0.4	-2.2	85.2	-9.0	-0.1	-3.4
Melilla	92.6	-3.2	0.0	-3.4	90.7	-3.4	0.0	-4.2

10. Employment general index by Autonomous City and Community

	Index	Rate (%)		
		Monthly	Annual	Year-to-date average
NATIONAL INDEX	96.8	0.1	-1.9	-2.0
Andalucía	93.0	0.0	-2.5	-3.0
Aragón	96.6	-0.4	-1.0	-0.2
Asturias, Principado de	95.2	0.3	-2.0	-2.5
Balears, Illes	105.1	0.0	1.0	-0.1
Canarias	99.8	0.3	0.9	-1.4
Cantabria	98.3	0.8	-2.2	-3.2
Castilla y León	97.8	-0.3	-3.6	-2.9
Castilla - La Mancha	96.5	-0.2	-3.0	-1.9
Cataluña	99.9	0.5	-0.3	-1.5
Comunitat Valenciana	97.8	-0.4	0.7	-0.2
Extremadura	97.7	-0.3	-1.1	-1.0
Galicia	97.5	-0.2	-2.6	-3.1
Madrid, Comunidad de	94.5	0.7	-5.7	-3.0
Murcia, Región de	93.6	-0.2	-3.1	-2.8
Navarra, Comunidad Foral de	95.7	0.2	-1.1	-1.6
País Vasco	96.5	0.0	-0.3	-1.2
Rioja, La	98.7	0.2	0.0	-1.3
Ceuta	100.8	1.5	-2.8	-3.3
Melilla	99.6	-1.5	0.8	0.2

11. Employment general index without service stations by Autonomous City and Community

	Index	Rate (%)		
		Monthly	Annual	Year-to-date average
NATIONAL INDEX	96.8	0.1	-1.8	-2.0
Andalucía	92.9	0.0	-2.4	-3.0
Aragón	96.5	-0.4	-0.8	0.0
Asturias, Principado de	95.0	0.3	-1.9	-2.5
Balears, Illes	105.2	0.0	1.0	-0.1
Canarias	99.4	0.3	0.8	-1.5
Cantabria	98.3	0.8	-2.2	-3.2
Castilla y León	97.7	-0.4	-3.7	-2.9
Castilla - La Mancha	96.7	-0.3	-2.8	-1.6
Cataluña	100.1	0.5	-0.1	-1.4
Comunitat Valenciana	97.9	-0.4	1.0	0.0
Extremadura	97.6	-0.3	-1.1	-1.1
Galicia	97.6	-0.2	-2.6	-3.1
Madrid, Comunidad de	94.4	0.7	-5.8	-3.0
Murcia, Región de	93.5	-0.3	-2.9	-2.7
Navarra, Comunidad Foral de	95.5	0.1	-1.0	-1.5
País Vasco	96.4	0.0	-0.2	-1.2
Rioja, La	99.1	0.2	0.2	-1.3
Ceuta	101.2	1.7	-2.4	-3.1
Melilla	99.8	-1.5	0.8	0.2