

Retail Trade Indices (RTI). Base 2005

September 2011. *Provisional data*

Main results

- The **General Retail Trade Index** at constant prices registers an **interannual variation of -5.5% in September**, one point and seven tenths lower than that registered in August.
- The **average rate** of retail sector sales stands at -5.4% during the first nine months of the year, as compared with the same period of 2010.
- **All of the distribution classes** decrease their sales as compared with September 2010.
- **Employment** in the retail sector **decreases 0.4%** interannually.
- **All Autonomous Communities** present negative interannual variations in their retail sales in September. Employment decreases in eight of them.

Evolution of trade, in general and by type of product

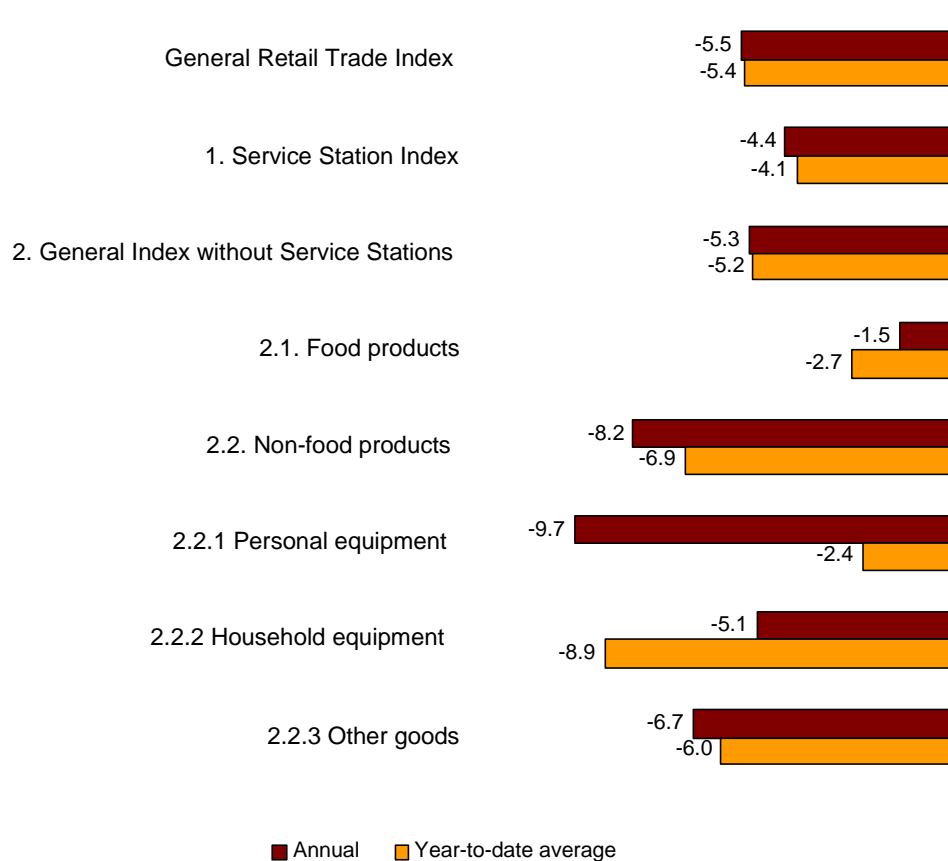
Sales in retail trade at constant prices (that is, after eliminating the prices effect) registered an interannual variation of -5.5% in September 2011, indicating a 1.7 point decrease, as compared with the rate from August.

Sales, excluding service stations, presented an annual rate of -5.3%. The breakdown of these sales by type of product showed a decrease in both food products (-1.5%) and non-food products (-8.2%). Among the latter, Personal equipment (-9.7%) registered the greatest decrease.

In turn, sales in service stations, after adjusting the prices effect, decreased 4.4%, as compared with September 2010.

The average rate of the General Retail Trade Index during the first nine months of the year presented a -5.4% variation, as compared with the same period last year. This rate was the same as that registered in August.

**Annual and average rates at constant prices
General index and by type of**



Evolution of trade, by distribution class

All of the distribution classes presented a decrease in sales in September, as compared with the same month last year. *Large chain stores* (-0.7%) presented the smallest decrease.

During the first nine months of the year, the average sales had a negative variation in all distribution classes, as compared with the same period last year.

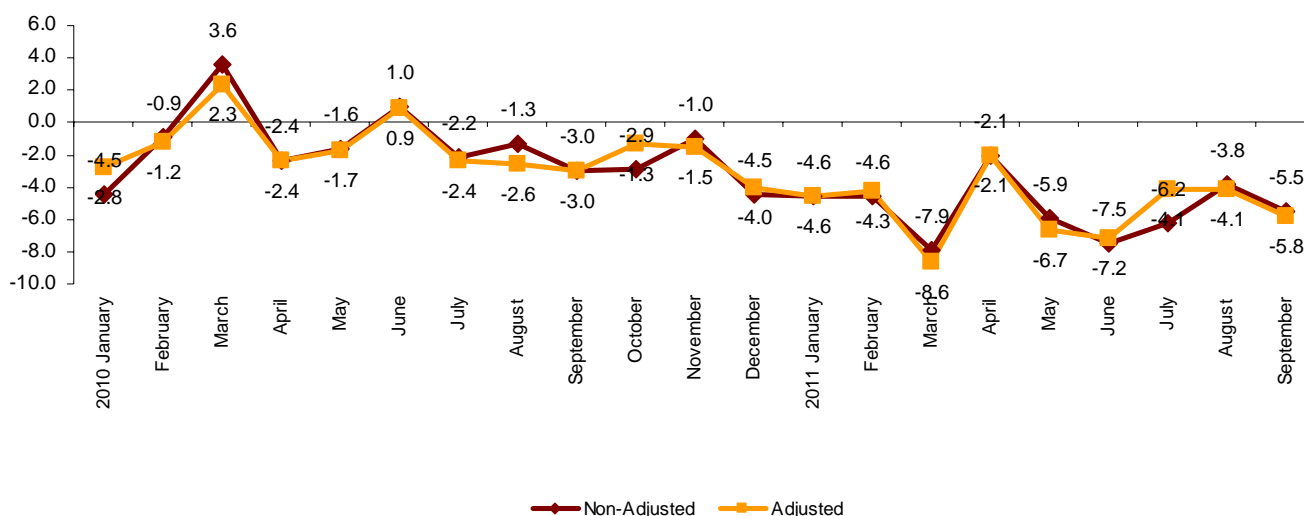
National Indices by distribution class

	Deflated Index	% variation	
		Annual	Year-to-date average
General Retail Trade Index	83.7	-5.5	-5.4
1. Service Station	90.5	-4.4	-4.1
2. General Index without Service	84.1	-5.3	-5.2
2.1. Single retail	77.1	-7.2	-6.9
2.2. Small chain	75.9	-7.0	-6.9
2.3. Large chain stores	113.0	-0.7	-0.1
2.4. Department	78.6	-4.4	-6.3

Evolution of trade, adjusted for the calendar effect

After adjusting for the calendar effect, that is, the difference between the number of working days in a given month in different years, the Retail Trade Index presented an adjusted interannual rate of **-5.8%**, one point and seven tenths below that registered in August.

**Deflated General Retail Trade Index
Annual Variation Rate**



Evolution of employment, by distribution class

The employment index in the Retail Trade sector in September showed an annual rate of **-0.4%**, two tenths above that registered in August. Employment decreased 0.7% in *Service stations*.

By distribution class, only *Large chain stores* registered a positive interannual rate, standing at 1.5%.

In the Retail Trade sector as a whole, average employment registered a rate of **-0.4%** in the first nine months of the year, as compared with the same period the previous year.

Nacional Employment Indices

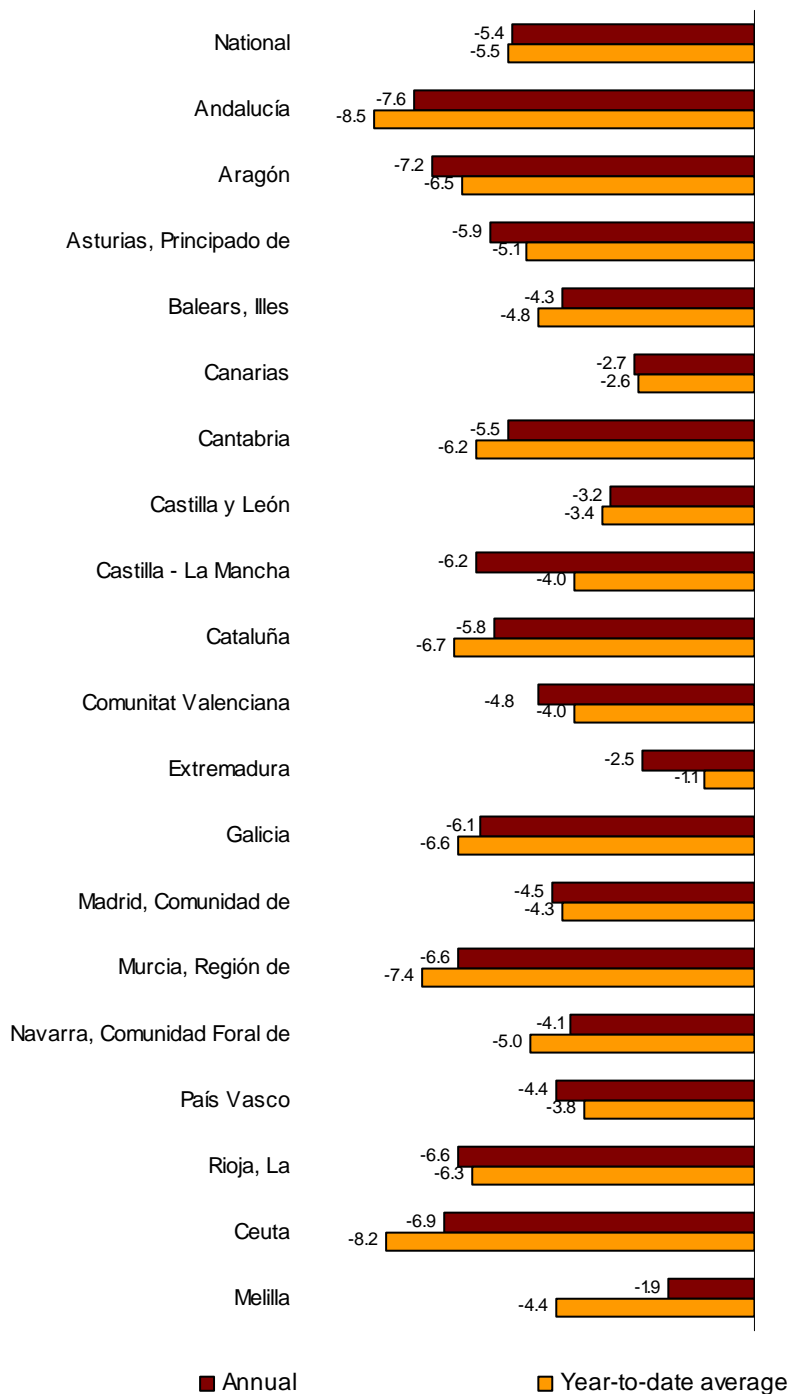
	Deflated Index	% variation	
		Annual	Year-to-date average
General Retail Trade Index	97.6	-0.4	-0.4
1. Service Station Index	101.3	-0.7	-0.6
2. General Index without Service Stations	97.5	-0.4	-0.4
2.1. Single retail stores	97.0	-0.1	-0.1
2.2. Small chain stores	89.4	-2.4	-2.0
2.3. Large chain stores	113.1	1.5	1.3
2.4. Department stores	93.7	-2.1	-2.1

Results by Autonomous Community. Variation rates in sales

Retail sales decreased in the interannual rate in all Autonomous Communities. Andalucía (−8.5%) and Región de Murcia (−7.4%) registered the greatest decreases.

Extremadura (−1.1%) and Canarias (−2.6%) were the Communities that registered the smallest decreases.

**Annual and average rates at constant prices
General index by Autonomous Cities and Communities**

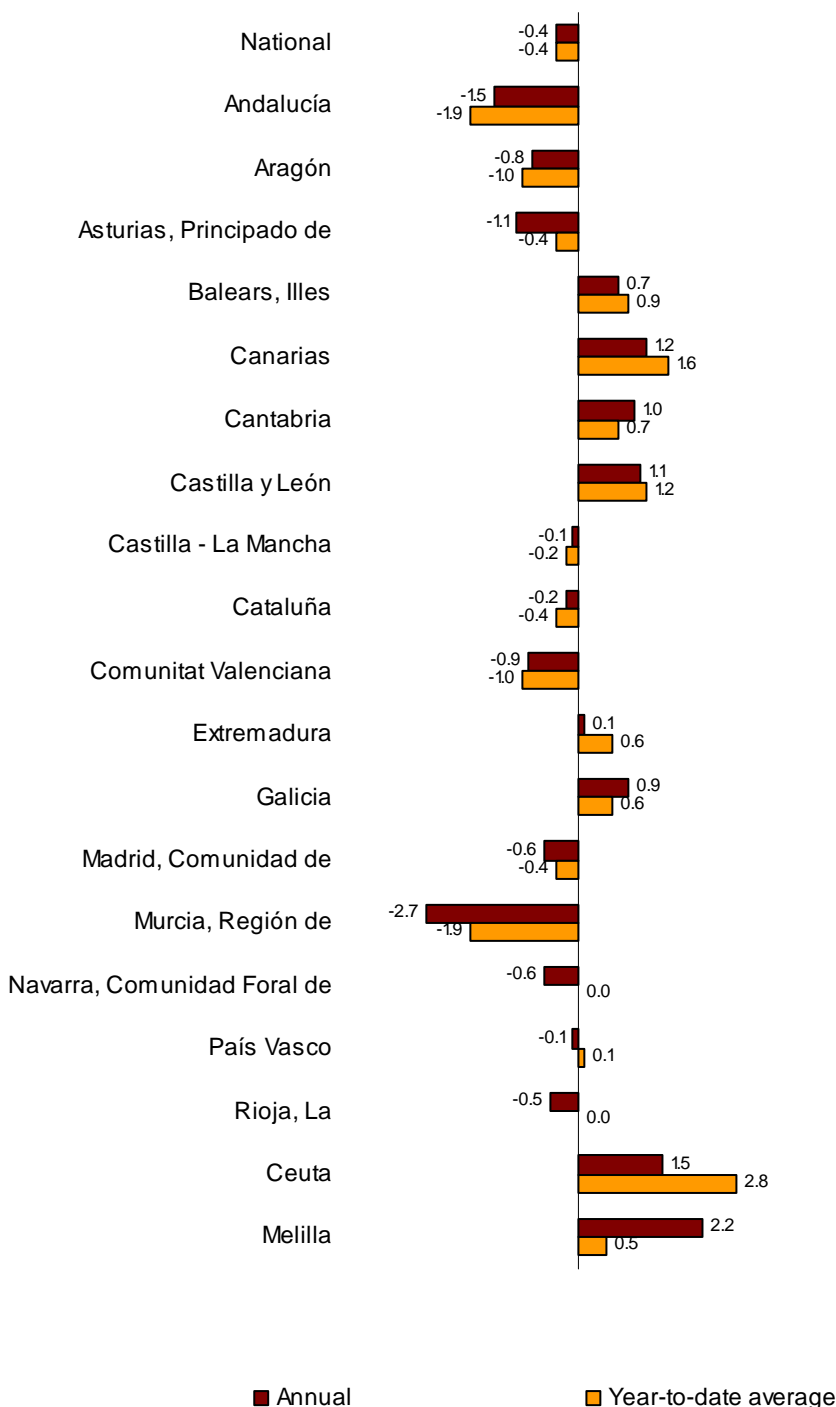


Results by Autonomous Community. Employment variation rates

Employment in retail trade decreased in eight Autonomous Communities. Andalucía and Región de Murcia (both with -1.9%) presented the greatest decreases.

Canarias (1.6%) and Castilla y León (1.2%) were the Communities that presented the greatest increases in employment.

**Annual and average rates of the employment index
General index by Autonomous Cities and Communities**



Retail Trade Index. Base 2005

September 2011

Provisional data

1. National indices

	Index	% variation		Deflated index	% variation	
		Annual	Year-to-date average		Annual	Year-to-date average
General Retail Trade Index	97.0	-1.5	-1.2	83.7	-5.5	-5.4
1. Service Station Index	127.9	10.7	11.9	90.5	-4.4	-4.1
2. General Index without Service Stations	94.6	-2.6	-2.3	84.1	-5.3	-5.2
2.1. Food products	110.5	1.7	0.4	92.4	-1.5	-2.7
2.2. Non-food products	85.0	-5.8	-4.3	79.6	-8.2	-6.9
2.2.1 Personal equipment	85.0	-9.7	-2.1	88.0	-9.7	-2.4
2.2.2 Household equipment	71.1	-4.1	-7.9	63.8	-5.1	-8.9
2.2.3 Other goods	96.5	-4.3	-3.3	90.5	-6.7	-6.0

2. National Indices by distribution class

	Index	% variation		Deflated index	% variation	
		Annual	Year-to-date average		Annual	Year-to-date average
General Retail Trade Index	97.0	-1.5	-1.2	83.7	-5.5	-5.4
1. Service Station Index	127.9	10.7	11.9	90.5	-4.4	-4.1
2. General Index without Service Stations	94.6	-2.6	-2.3	84.1	-5.3	-5.2
2.1. Single retail stores	86.6	-4.6	-4.1	77.1	-7.2	-6.9
2.2. Small chain stores	85.4	-4.4	-4.1	75.9	-7.0	-6.9
2.3. Large chain stores	127.0	2.1	2.9	113.0	-0.7	-0.1
2.4. Department stores	88.4	-1.7	-3.5	78.6	-4.4	-6.3

3. Department Store Indices

	Index	% variation		Deflated index	% variation	
		Annual	Year-to-date average		Annual	Year-to-date average
Department Store Index	88.4	-1.7	-3.5	78.6	-4.4	-6.3
1. Food products	92.6	2.6	-0.7	77.5	-0.6	-3.8
2. Non-food products	86.4	-3.8	-4.8	80.9	-6.3	-7.5

4. National Indices. Adjusted for calendar effect

	Index	% variation		Deflated index	% variation	
		Annual	Year-to-date average		Annual	Year-to-date average
General Retail Trade Index	96.2	-1.8	-1.1	83.0	-5.8	-5.3
1. Service Station Index	127.3	10.5	11.9	90.1	-4.5	-4.0
2. General Index without Service Stations	93.8	-2.9	-2.2	83.4	-5.6	-5.1
2.1. Department Store Index	88.0	-1.9	-3.4	78.2	-4.6	-6.3

5. Annual rates of National indices

	General Retail Trade Index				General Index without Service Stations			
	Current Prices		Constant Prices		Current Prices		Constant Prices	
	Original	Adjusted ¹	Original	Adjusted ¹	Original	Adjusted ¹	Original	Adjusted ¹
2010 September	-0.5	-0.5	-3.0	-3.0	-1.6	-1.6	-2.9	-2.9
October	0.0	1.6	-2.9	-1.3	-0.9	0.8	-2.6	-0.8
November	1.9	1.4	-1.0	-1.5	1.1	0.6	-0.7	-1.2
December	-0.6	-0.1	-4.5	-4.0	-1.7	-1.2	-3.9	-3.4
2011 January	-0.3	-0.3	-4.6	-4.6	-1.7	-1.7	-4.5	-4.5
February	0.1	0.4	-4.6	-4.3	-1.6	-1.4	-4.6	-4.3
2011 January	-3.3	-4.0	-7.9	-8.6	-5.1	-5.8	-8.1	-8.8
April	2.7	2.7	-2.1	-2.1	1.8	1.8	-1.5	-1.5
May	-1.6	-2.3	-5.9	-6.7	-2.6	-3.3	-5.8	-6.6
June	-3.8	-3.4	-7.5	-7.2	-4.8	-4.4	-7.4	-7.0
July	-2.3	-0.1	-6.2	-4.1	-3.2	-1.0	-5.8	-3.5
August	0.0	-0.4	-3.8	-4.1	-0.8	-1.2	-3.3	-3.7
September	-1.5	-1.8	-5.5	-5.8	-2.6	-2.9	-5.3	-5.6

¹ Index rates adjusted for calendar effects

6. National Employment Indices by distribution class

	Index	% variation on		
		Previous mo	Same month	Year-to-date average
General Retail Trade Index	97.6	-0.9	-0.4	-0.4
1. Service Station Index	101.3	-1.8	-0.7	-0.6
2. General Index without Service Stations	97.5	-0.9	-0.4	-0.4
2.1. Single retail stores	97.0	-0.4	-0.1	-0.1
2.2. Small chain stores	89.4	-0.9	-2.4	-2.0
2.3. Large chain stores	113.1	-1.0	1.5	1.3
2.4. Department stores	93.7	-2.8	-2.1	-2.1

7. General Retail Trade Indices of Autonomous Cities and Communities

	Index	% variation		Deflated index	% variation	
		Annual	Year-to-date average		Annual	Year-to-date average
National total	97.0	-1.5	-1.2	83.7	-5.5	-5.4
Andalucía	91.5	-4.7	-3.3	78.9	-8.5	-7.6
Aragón	95.6	-2.4	-3.1	82.3	-6.5	-7.2
Asturias, Principado de	102.5	-0.9	-1.3	89.3	-5.1	-5.9
Balears, Illes	102.0	-0.9	-0.3	88.5	-4.8	-4.3
Canarias	91.4	0.7	0.8	81.4	-2.6	-2.7
Cantabria	103.4	-2.2	-1.3	88.6	-6.2	-5.5
Castilla y León	106.7	1.1	1.5	91.2	-3.4	-3.2
Castilla - La Mancha	99.1	0.6	-1.3	85.3	-4.0	-6.2
Cataluña	96.1	-2.7	-1.6	82.2	-6.7	-5.8
Comunitat Valenciana	93.3	0.1	-0.6	80.8	-4.0	-4.8
Extremadura	110.0	3.2	1.9	95.0	-1.1	-2.5
Galicia	103.7	-2.6	-1.8	89.8	-6.6	-6.1
Madrid, Comunidad de	98.5	-0.2	-0.3	85.3	-4.3	-4.5
Murcia, Región de	95.1	-3.6	-2.5	81.6	-7.4	-6.6
Navarra, Comunidad Foral de	104.9	-1.2	0.0	91.4	-5.0	-4.1
País Vasco	100.0	0.0	-0.3	86.1	-3.8	-4.4
Rioja, La	91.4	-1.7	-1.9	78.7	-6.3	-6.6
Ceuta	99.1	-5.0	-4.1	86.0	-8.2	-6.9
Melilla	109.3	-1.4	1.1	94.0	-4.4	-1.9

8. General Indices without Service Stations, by Autonomous Cities and Communities

	Index	% variation		Deflated index	% variation	
		Annual	Year-to-date average		Annual	Year-to-date average
National total	94.6	-2.6	-2.3	84.1	-5.3	-5.2
Andalucía	90.9	-5.5	-4.5	81.0	-8.0	-7.2
Aragón	95.5	-2.6	-3.6	84.3	-5.6	-6.6
Asturias, Principado de	101.2	-1.8	-1.9	90.8	-4.8	-5.3
Balears, Illes	101.1	-1.5	-0.9	90.8	-3.9	-3.4
Canarias	89.3	0.1	0.1	82.8	-1.4	-1.4
Cantabria	100.5	-3.7	-2.2	89.0	-6.3	-4.9
Castilla y León	103.7	0.2	0.1	91.0	-3.1	-3.3
Castilla - La Mancha	98.7	0.0	-1.9	87.6	-3.4	-5.6
Cataluña	94.9	-3.4	-2.4	83.5	-6.2	-5.4
Comunitat Valenciana	91.4	-0.9	-1.6	81.7	-3.7	-4.4
Extremadura	105.0	1.2	0.1	93.3	-1.7	-2.8
Galicia	101.5	-3.2	-2.7	90.7	-6.0	-5.6
Madrid, Comunidad de	91.1	-2.8	-2.7	81.3	-5.4	-5.5
Murcia, Región de	94.3	-4.7	-3.2	83.6	-7.0	-5.7
Navarra, Comunidad Foral de	99.7	-4.6	-2.4	89.2	-7.2	-5.1
País Vasco	98.1	-0.4	-0.9	86.6	-3.1	-3.8
Rioja, La	90.8	-2.6	-2.9	80.3	-6.1	-6.4
Ceuta	101.4	-5.0	-4.1	90.8	-7.6	-6.3
Melilla	108.2	-0.9	1.1	96.1	-2.9	-1.1

9. General Employment Indices of Autonomous Cities and Communities

	Index	% variation on		
		Previous mo	Same month previous year	Year-to-date average
National total	97.6	-0.9	-0.4	-0.4
Andalucía	93.6	-0.8	-1.9	-1.5
Aragón	96.1	-1.4	-1.0	-0.8
Asturias, Principado de	103.0	-1.3	-0.4	-1.1
Balears, Illes	99.4	-1.4	0.9	0.7
Canarias	95.3	-0.4	1.6	1.2
Cantabria	104.8	-1.1	0.7	1.0
Castilla y León	105.4	-1.4	1.2	1.1
Castilla - La Mancha	97.9	0.0	-0.2	-0.1
Cataluña	96.9	-1.1	-0.4	-0.2
Comunitat Valenciana	95.9	-1.3	-1.0	-0.9
Extremadura	101.8	-0.6	0.6	0.1
Galicia	103.4	-1.1	0.6	0.9
Madrid, Comunidad de	97.3	-0.5	-0.4	-0.6
Murcia, Región de	98.4	-1.3	-1.9	-2.7
Navarra, Comunidad Foral de	99.5	-0.5	0.0	-0.6
País Vasco	100.9	-0.3	0.1	-0.1
Rioja, La	98.3	-0.5	0.0	-0.5
Ceuta	104.3	-1.5	2.8	1.5
Melilla	103.1	-1.6	0.5	2.2

10. General Employment Indices without Service Stations, by Autonomous Cities and Communities

	Index	% variation on		
		Previous mo	Same month previous year	Year-to-date average
National total	97.5	-0.9	-0.4	-0.4
Andalucía	93.7	-0.7	-1.9	-1.5
Aragón	95.8	-1.5	-1.2	-0.9
Asturias, Principado de	103.1	-1.3	-0.6	-1.3
Balears, Illes	99.3	-1.5	0.8	0.7
Canarias	94.3	-0.5	1.3	1.1
Cantabria	104.3	-1.3	0.6	0.9
Castilla y León	105.8	-1.4	1.4	1.0
Castilla - La Mancha	98.0	0.1	-0.2	-0.1
Cataluña	96.8	-1.1	-0.4	-0.1
Comunitat Valenciana	95.6	-1.3	-1.0	-0.8
Extremadura	102.1	-0.6	0.6	0.0
Galicia	103.8	-1.1	0.8	1.0
Madrid, Comunidad de	97.1	-0.3	-0.3	-0.5
Murcia, Región de	98.6	-1.4	-1.9	-2.6
Navarra, Comunidad Foral de	99.0	-0.6	-0.2	-0.7
País Vasco	100.6	-0.3	0.0	-0.2
Rioja, La	98.3	-0.4	0.2	-0.2
Ceuta	104.3	-1.5	2.8	1.5
Melilla	103.4	-1.7	0.7	2.4

For further information see INEbase - www.ine.es/en/welcome_en.htm All press releases at: www.ine.es/en/prensa/prensa_en.htm

Press Office: Telephone numbers: 91 583 93 63 / 94 08

Fax: 91 583 90 87 - gprensa@ine.es

Information Area: Telephone number: 91 583 91 00

Fax: 91 583 91 58 - www.ine.es/infoine/?L=1