

Retail Trade Indices (RTI). Base 2005
November 2012. *Provisional data*

**The General Retail Trade Index at constant prices stands at
-7.8%, as compared with -8.4% in October**

**The annual variation of the employment in the Retail Trade sector
is -1.6%**

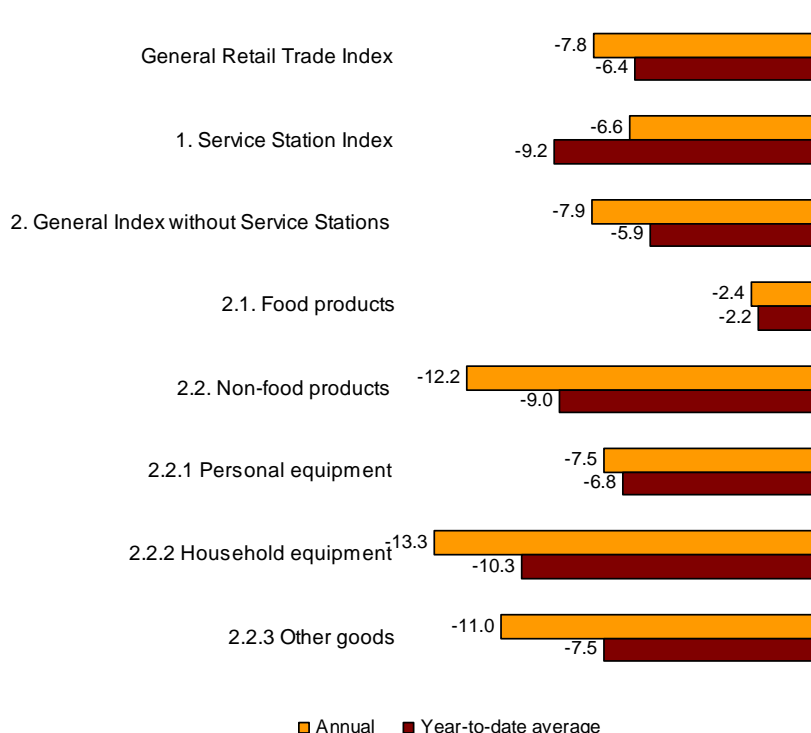
Sales in retail trade at constant prices (that is, after eliminating the prices effect) showed an annual variation of -7.8% in November, six points above that registered in October.

Sales, excluding service stations, registered an annual rate of -7.9%. The breakdown of these sales by type of product showed a drop in the rate of 2.4% in Food products and 12.2% in Non-food products.

In turn, sales in service stations, after adjusting the prices effect, decreased 6.6%, as compared with November 2011.

The average rate of the General Retail Trade Index during the first eleven months of the year presented a variation of -6.4% as compared with the same period last year. By type of products this rate was negative both in Food products and in Non-food products.

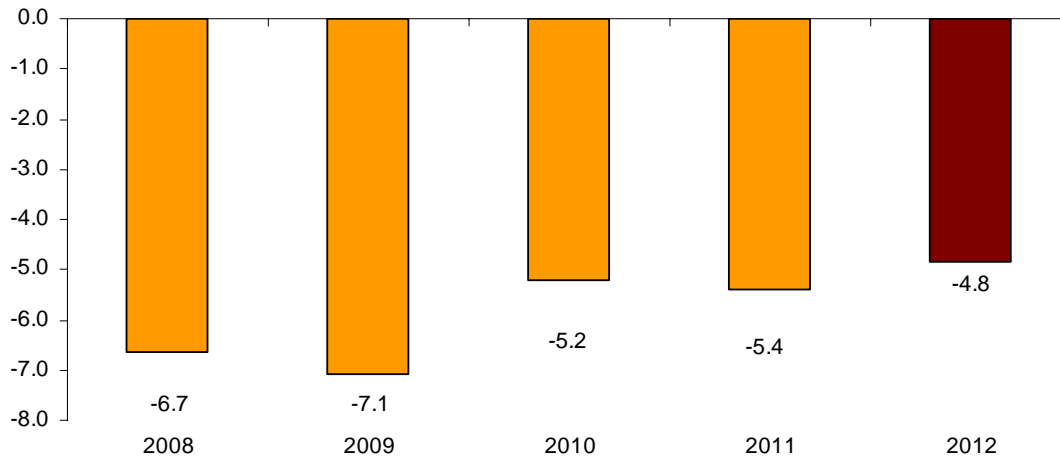
**Annual and average rates at constant prices
General index and by type of product**



Evolution of the inter-monthly rate¹

The variation of the General Retail Trade Index between November and October was –4.8%. This rate showed the lowest decrease in the last five years.

**Evolution of the inter-monthly rate of the RTI at constant prices
(variation for November/October the same year)**



Evolution of trade, by distribution class

All distribution classes decreased in sales, as compared with November of the previous year. *Large chain stores* presented the lowest decrease (–2.7%).

During the first eleven months of the year, the average of sales had a negative variation in all distribution classes.

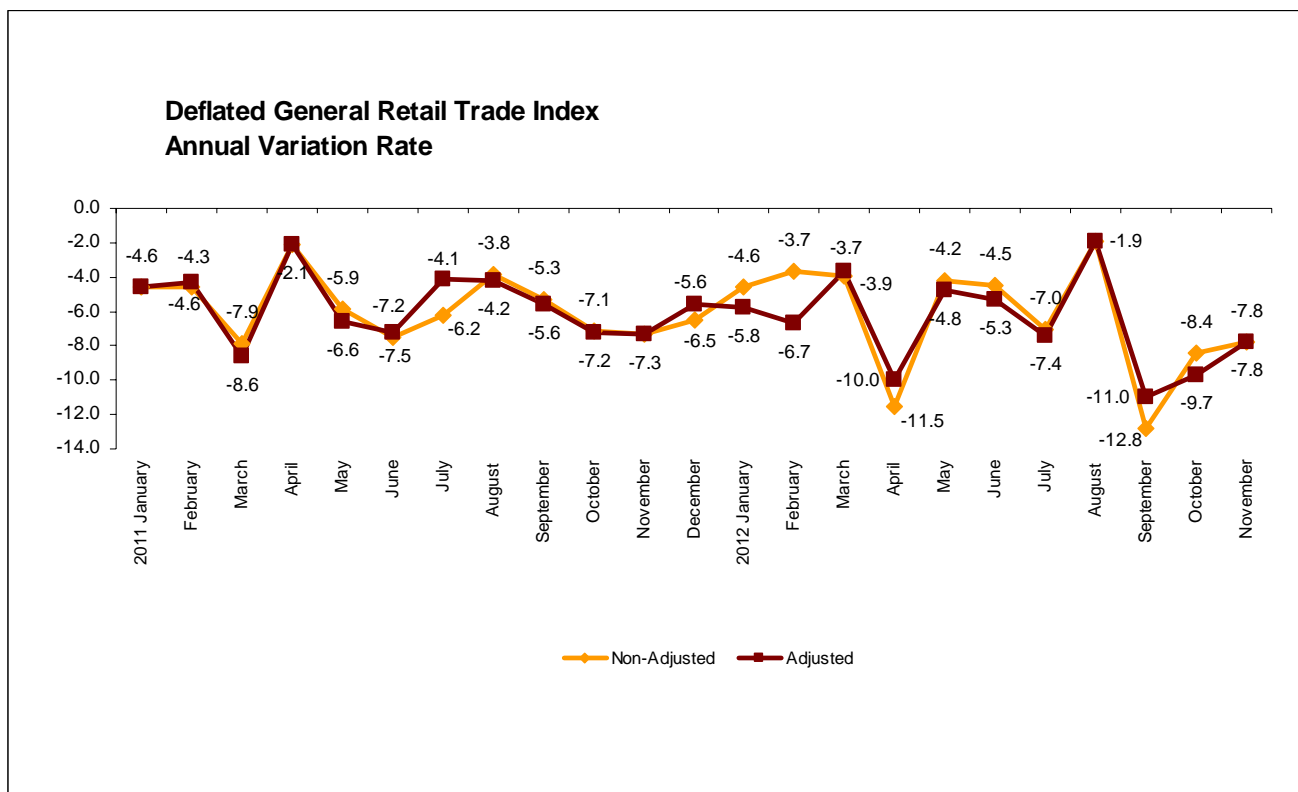
National Indices by distribution class

	Deflated Index	% variation	
		Annual	Year-to-date average
General Retail Trade Index	73.6	-7.8	-6.4
1. Service Station Index	82.8	-6.6	-9.2
2. General Index without Service Stations	73.6	-7.9	-5.9
2.1. Single retail stores	65.4	-9.9	-7.4
2.2. Small chain stores	64.1	-11.0	-8.2
2.3. Large chain stores	104.2	-2.7	-1.5
2.4. Department stores	68.1	-9.7	-8.6

¹ In order to contribute to the analysis and interpretation of data, this section has been added with performance of the General Retail Trade Index at constant prices for recent years. The monthly rates of this type of series may have some degree of seasonal behaviour, therefore it is recommended that it be evaluated in relation to the item of data for the same month in previous years.

Evolution of trade, adjusted for the calendar effect

After adjusting the calendar effect, that is, the difference between the number of working days in a given month in different years, the Retail Trade Index registered an interannual rate of **-7.8%** in November, one point and nine tenths above that registered in October.



Evolution of employment, by distribution class

The employment index in the Retail Trade sector in November presented an annual rate of **-1.6%**, four tenths below that registered in October. Employment decreased 3.1% in *Service stations*.

All distribution classes registered negative interannual rates, except *Large chain stores* that maintained the employment as compared with the same month of the previous year.

The average employment registered a rate of **-1.2%** in the first eleven months of the year, as compared with the same period in 2011.

Nacional Employment Indices

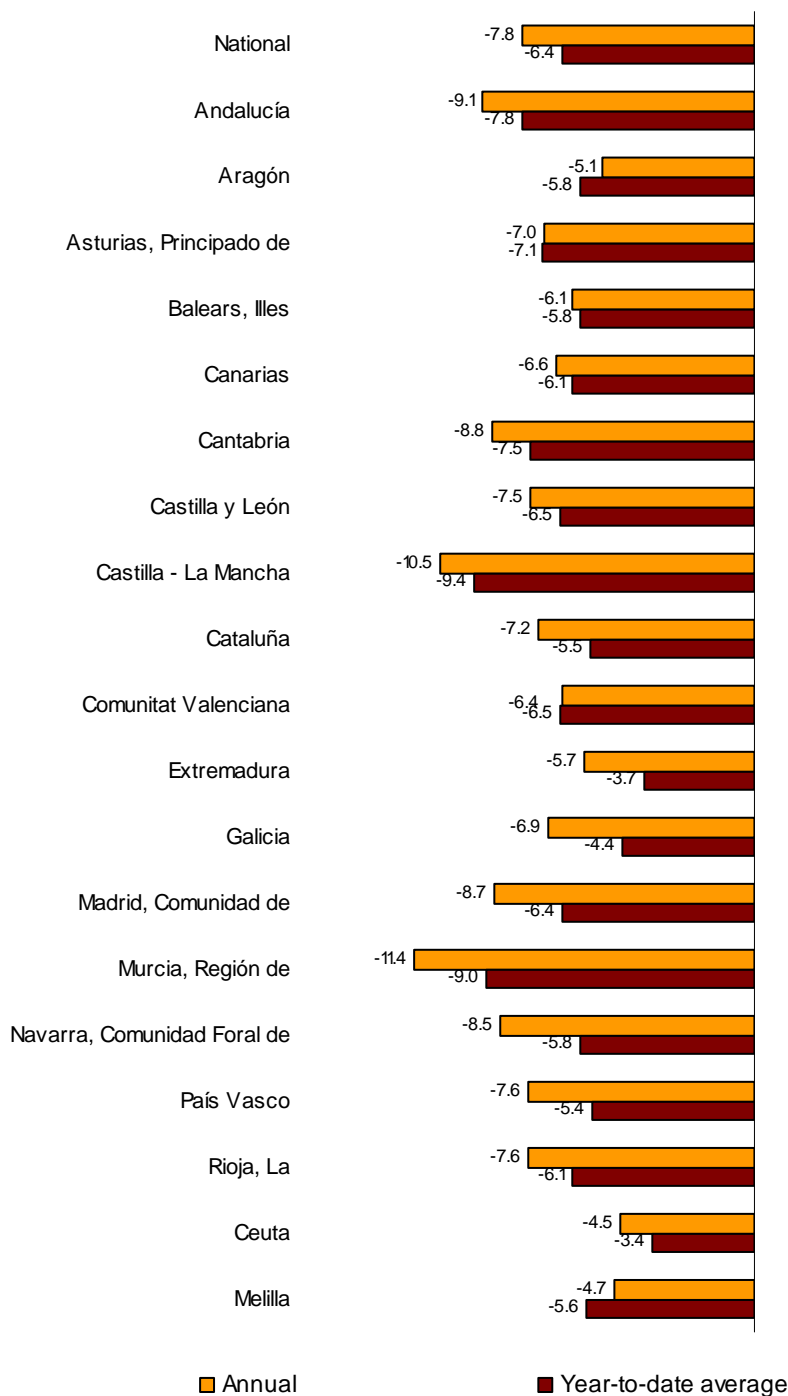
Index	Index	% variation	
		Annual	Year-to-date average
General Retail Trade Index	95.7	-1.6	-1.2
1. Service Station Index	95.9	-3.1	-1.5
2. General Index without Service Stations	95.7	-1.5	-1.2
2.1. Single retail stores	95.6	-1.0	-0.6
2.2. Small chain stores	84.8	-4.0	-3.7
2.3. Large chain stores	113.9	0.0	0.6
2.4. Department stores	90.3	-3.6	-3.2

Results by Autonomous Community. Variation rates in sales

All Autonomous communities presented negative annual rates in Retail sales in November. The greatest decreases were registered in Region de Murcia (-11.4%) and Castilla-La Mancha (-10.5%).

In turn, Aragon (-5.1%) and Extremadura (-5.7%) presented the lowest decreases.

**Annual and average rates at constant prices
General index by Autonomous Cities and Communities**

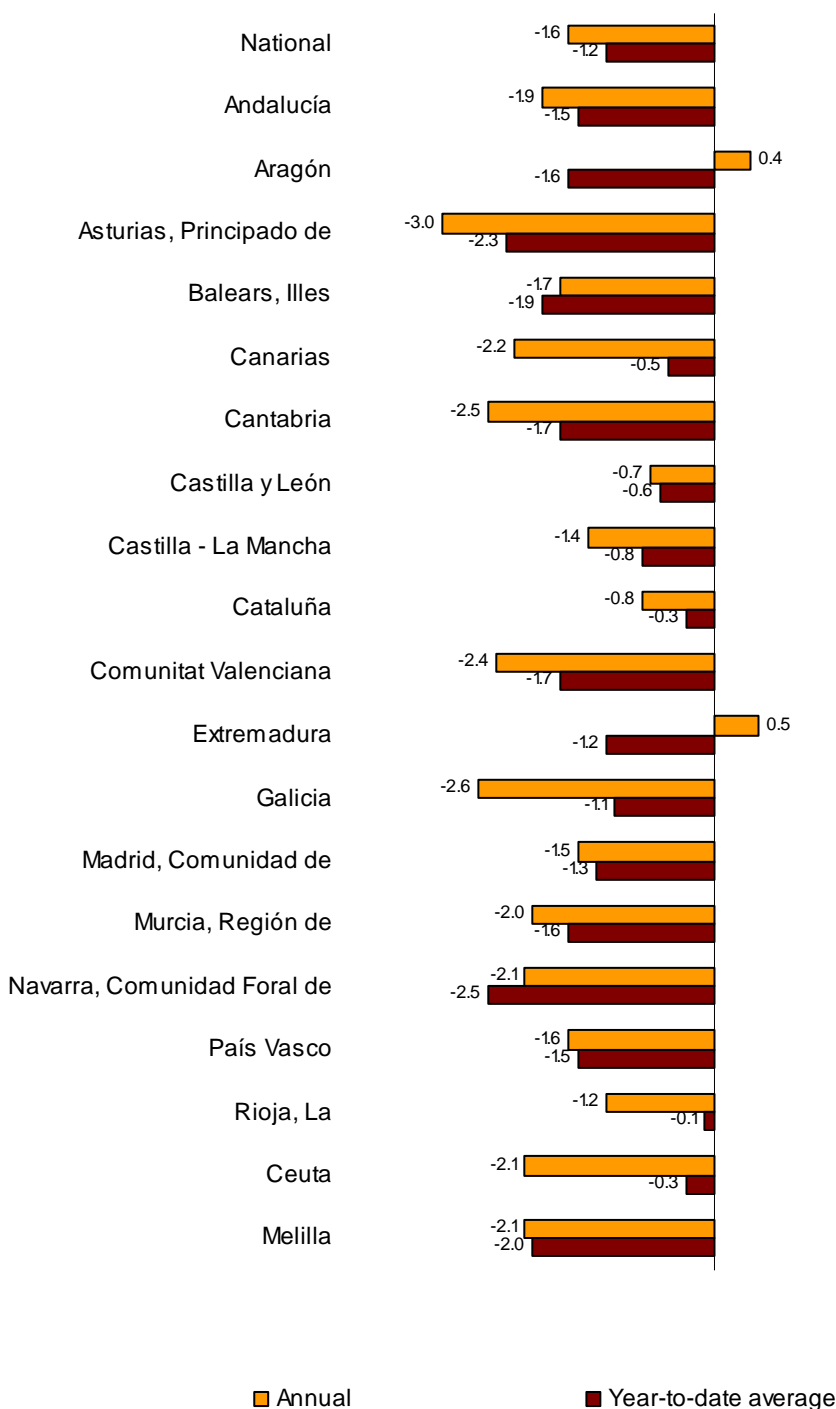


Results by Autonomous Community. Employment variation rates

Employment in retail trade decreased in 15 Autonomous Communities, as compared with November 2011.

Extremadura (0.5%) and Aragón (0.4%) presented an increase in employment as compared to the same month from the previous year. The greatest decreases were registered in Principado de Asturias (-3.0%), Galicia (-2.6%) and Cantabria (-2.5%).

**Annual and average rates of the employment index
General index by Autonomous Cities and Communities**



Retail Trade Index. Base 2005 November 2012

Provisional data

1. National indices

	Index	% variation		Deflated index	% variation	
		Annual	Year-to-date average		Annual	Year-to-date average
General Retail Trade Index	90.6	-4.4	-3.6	73.6	-7.8	-6.4
1. Service Station Index	123.0	-1.9	-1.7	82.8	-6.6	-9.2
2. General Index without Service Stations	88.1	-4.6	-3.7	73.6	-7.9	-5.9
2.1. Food products	106.8	0.7	0.5	86.3	-2.4	-2.2
2.2. Non-food products	76.7	-8.7	-6.9	66.1	-12.2	-9.0
2.2.1 Personal equipment	81.0	-7.0	-6.6	72.0	-7.5	-6.8
2.2.2 Household equipment	63.0	-12.3	-9.6	55.3	-13.3	-10.3
2.2.3 Other goods	85.2	-7.4	-5.3	73.5	-11.0	-7.5

2. National Indices by distribution class

	Index	% variation		Deflated index	% variation	
		Annual	Year-to-date average		Annual	Year-to-date average
General Retail Trade Index	90.6	-4.4	-3.6	73.6	-7.8	-6.4
1. Service Station Index	123.0	-1.9	-1.7	82.8	-6.6	-9.2
2. General Index without Service Stations	88.1	-4.6	-3.7	73.6	-7.9	-5.9
2.1. Single retail stores	78.3	-6.7	-5.3	65.4	-9.9	-7.4
2.2. Small chain stores	76.7	-7.8	-6.0	64.1	-11.0	-8.2
2.3. Large chain stores	124.7	0.8	0.8	104.2	-2.7	-1.5
2.4. Department stores	81.5	-6.4	-6.5	68.1	-9.7	-8.6

3. Department Store Indices

	Index	% variation		Deflated index	% variation	
		Annual	Year-to-date average		Annual	Year-to-date average
Department Store Index	81.5	-6.4	-6.5	68.1	-9.7	-8.6
1. Food products	91.0	-1.3	-3.1	73.6	-4.3	-5.7
2. Non-food products	76.7	-9.2	-8.2	66.2	-12.7	-10.3

4. National Indices. Adjusted for calendar effect

	Index	% variation		Deflated index	% variation	
		Annual	Year-to-date average		Annual	Year-to-date average
General Retail Trade Index	91.3	-4.4	-3.9	74.1	-7.8	-6.8
1. Service Station Index	123.5	-1.9	-1.8	83.1	-6.6	-9.3
2. General Index without Service Stations	88.7	-4.6	-4.1	74.2	-7.9	-6.3
2.1. Department Store Index	81.8	-6.4	-6.8	68.4	-9.7	-8.9

5. Annual rates of National indices

	General Retail Trade Index				General Index without Service Stations			
	Current Prices		Constant Prices		Current Prices		Constant Prices	
	Original	Adjusted ¹	Original	Adjusted ¹	Original	Adjusted ¹	Original	Adjusted ¹
2011 November	-3.7	-3.7	-7.3	-7.3	-4.8	-4.8	-7.2	-7.2
December	-3.8	-3.0	-6.5	-5.6	-4.4	-3.5	-6.4	-5.5
2012 January	-2.4	-3.6	-4.6	-5.8	-2.8	-4.0	-4.2	-5.4
February	-1.5	-4.5	-3.7	-6.7	-1.9	-5.3	-3.3	-6.6
March	-1.6	-1.4	-3.9	-3.7	-1.4	-1.2	-2.8	-2.6
April	-9.1	-7.6	-11.5	-10.0	-9.6	-8.1	-11.3	-9.8
March	-1.7	-2.3	-4.2	-4.8	-1.7	-2.3	-3.6	-4.2
June	-2.4	-3.2	-4.5	-5.3	-2.1	-2.9	-4.0	-4.9
July	-4.3	-4.7	-7.0	-7.4	-4.2	-4.7	-6.6	-7.0
August	1.8	1.8	-1.9	-1.9	1.4	1.4	-1.3	-1.3
September	-8.7	-7.0	-12.8	-11.0	-9.0	-7.2	-12.1	-10.3
October	-4.4	-5.8	-8.4	-9.7	-4.8	-6.2	-7.9	-9.3
November	-4.4	-4.4	-7.8	-7.8	-4.6	-4.6	-7.9	-7.9

¹ Index rates adjusted for calendar effects

6. National Employment Indices by distribution class

	Index	% variation on		
		Previous month	Same month	Year-to-date average
General Retail Trade Index	95.7	-0.5	-1.6	-1.2
1. Service Station Index	95.9	-1.5	-3.1	-1.5
2. General Index without Service Stations	95.7	-0.4	-1.5	-1.2
2.1. Single retail stores	95.6	-0.8	-1.0	-0.6
2.2. Small chain stores	84.8	-0.5	-4.0	-3.7
2.3. Large chain stores	113.9	0.0	0.0	0.6
2.4. Department stores	90.3	0.3	-3.6	-3.2

7. General Retail Trade Indices of Autonomous Cities and Communities

	Index	% variation		Deflated index	% variation	
		Annual	Year-to-date average		Annual	Year-to-date average
National total	90.6	-4.4	-3.6	73.6	-7.8	-6.4
Andalucía	84.7	-6.0	-5.2	69.0	-9.1	-7.8
Aragón	91.6	-1.8	-2.9	74.1	-5.1	-5.8
Asturias, Principado de	93.4	-3.9	-4.5	76.1	-7.0	-7.1
Balears, Illes	76.4	-2.6	-2.9	62.7	-6.1	-5.8
Canarias	90.6	-3.5	-3.6	76.8	-6.6	-6.1
Cantabria	93.8	-4.5	-4.5	74.9	-8.8	-7.5
Castilla y León	98.9	-3.6	-3.0	79.1	-7.5	-6.5
Castilla - La Mancha	90.3	-7.1	-6.5	72.9	-10.5	-9.4
Cataluña	92.9	-3.0	-2.2	74.4	-7.2	-5.5
Comunitat Valenciana	85.3	-2.7	-3.6	69.5	-6.4	-6.5
Extremadura	105.5	-2.0	-0.8	85.7	-5.7	-3.7
Galicia	94.8	-3.8	-1.7	77.3	-6.9	-4.4
Madrid, Comunidad de	93.2	-5.7	-3.8	76.6	-8.7	-6.4
Murcia, Región de	84.8	-7.9	-6.4	68.0	-11.4	-9.0
Navarra, Comunidad Foral de	96.3	-5.0	-2.7	78.4	-8.5	-5.8
País Vasco	95.5	-4.6	-2.8	77.4	-7.6	-5.4
Rioja, La	88.1	-4.1	-2.9	70.5	-7.6	-6.1
Ceuta	101.4	-2.0	-1.0	84.0	-4.5	-3.4
Melilla	104.2	-2.7	-3.5	85.9	-4.7	-5.6

8. General Indices without Service Stations, by Autonomous Cities and Communities

	Index	% variation		Deflated index	% variation	
		Annual	Year-to-date average		Annual	Year-to-date average
National total	88.1	-4.6	-3.7	73.6	-7.9	-5.9
Andalucía	82.9	-6.5	-5.6	69.7	-9.5	-7.4
Aragón	90.9	-2.4	-3.2	75.2	-5.7	-5.6
Asturias, Principado de	92.1	-4.3	-5.1	76.9	-7.4	-7.1
Balears, Illes	75.7	-2.9	-3.2	64.3	-5.9	-5.2
Canarias	87.5	-5.0	-4.6	78.6	-6.4	-5.6
Cantabria	90.2	-5.6	-5.4	74.4	-9.5	-7.5
Castilla y León	96.1	-3.2	-2.6	79.0	-6.8	-5.2
Castilla - La Mancha	89.3	-7.6	-7.0	74.2	-10.9	-9.4
Cataluña	91.6	-3.3	-2.4	75.1	-7.5	-5.1
Comunitat Valenciana	83.2	-3.0	-4.1	69.9	-6.4	-6.2
Extremadura	101.0	-1.6	-1.3	84.4	-5.2	-3.7
Galicia	91.7	-4.5	-2.4	76.8	-7.6	-4.6
Madrid, Comunidad de	88.2	-4.9	-2.5	74.4	-7.9	-4.7
Murcia, Región de	83.2	-8.8	-7.5	68.8	-12.2	-9.7
Navarra, Comunidad Foral de	90.8	-6.2	-4.3	75.7	-9.6	-6.8
País Vasco	92.8	-5.3	-3.4	76.9	-8.4	-5.5
Rioja, La	87.1	-4.4	-2.8	71.2	-8.0	-5.6
Ceuta	103.8	-2.1	-0.8	88.8	-4.6	-2.8
Melilla	103.0	-2.9	-4.2	87.7	-4.8	-5.6

9. General Employment Indices of Autonomous Cities and Communities

	Index	% variation on		
		Previous month	Same month previous year	Year-to-date average
National total	95.7	-0.5	-1.6	-1.2
Andalucía	91.5	0.1	-1.9	-1.5
Aragón	95.7	0.1	0.4	-1.6
Asturias, Principado de	99.1	-0.7	-3.0	-2.3
Balears, Illes	90.7	-3.5	-1.7	-1.9
Canarias	94.1	0.0	-2.2	-0.5
Cantabria	101.6	-0.9	-2.5	-1.7
Castilla y León	104.0	-0.2	-0.7	-0.6
Castilla - La Mancha	96.9	0.0	-1.4	-0.8
Cataluña	95.9	0.3	-0.8	-0.3
Comunitat Valenciana	93.0	-0.1	-2.4	-1.7
Extremadura	101.0	1.0	0.5	-1.2
Galicia	101.1	-0.2	-2.6	-1.1
Madrid, Comunidad de	96.5	-2.8	-1.5	-1.3
Murcia, Región de	95.1	-0.4	-2.0	-1.6
Navarra, Comunidad Foral de	96.1	0.0	-2.1	-2.5
País Vasco	98.3	0.4	-1.6	-1.5
Rioja, La	97.5	-0.1	-1.2	-0.1
Ceuta	102.0	-1.2	-2.1	-0.3
Melilla	101.8	0.9	-2.1	-2.0

10. General Employment Indices without Service Stations, by Autonomous Cities and Communities

	Index	% variation on		
		Previous month	Same month previous year	Year-to-date average
National total	95.7	-0.4	-1.5	-1.2
Andalucía	91.7	0.2	-1.9	-1.5
Aragón	95.7	0.2	0.7	-1.6
Asturias, Principado de	99.4	-0.7	-2.9	-2.3
Balears, Illes	90.6	-3.5	-1.6	-2.0
Canarias	93.2	0.1	-2.2	-0.6
Cantabria	101.5	-0.8	-2.5	-1.6
Castilla y León	104.5	-0.2	-0.6	-0.5
Castilla - La Mancha	97.2	0.1	-1.3	-0.7
Cataluña	96.0	0.4	-0.7	-0.3
Comunitat Valenciana	93.0	-0.1	-2.4	-1.7
Extremadura	101.5	1.1	0.6	-1.1
Galicia	101.4	-0.2	-2.7	-1.2
Madrid, Comunidad de	96.3	-2.8	-1.3	-1.3
Murcia, Región de	95.1	-0.3	-2.1	-1.9
Navarra, Comunidad Foral de	95.9	0.1	-2.1	-2.6
País Vasco	98.1	0.5	-1.6	-1.5
Rioja, La	97.8	0.0	-1.1	0.0
Ceuta	102.3	-1.1	-2.1	-0.2
Melilla	102.0	0.9	-2.3	-2.0

Más información en INEbase – www.ine.es

Todas las notas de prensa en: www.ine.es/prensa/prensa.htm

Gabinete de prensa: Teléfonos: 91 583 93 63 / 94 08 – Fax: 91 583 90 87 - gprensa@ine.es

Área de información: Teléfono: 91 583 91 00 – Fax: 91 583 91 58 – www.ine.es/infoine