

Retail Trade Indices (RTI). Base 2010
November 2013 *Provisional data*

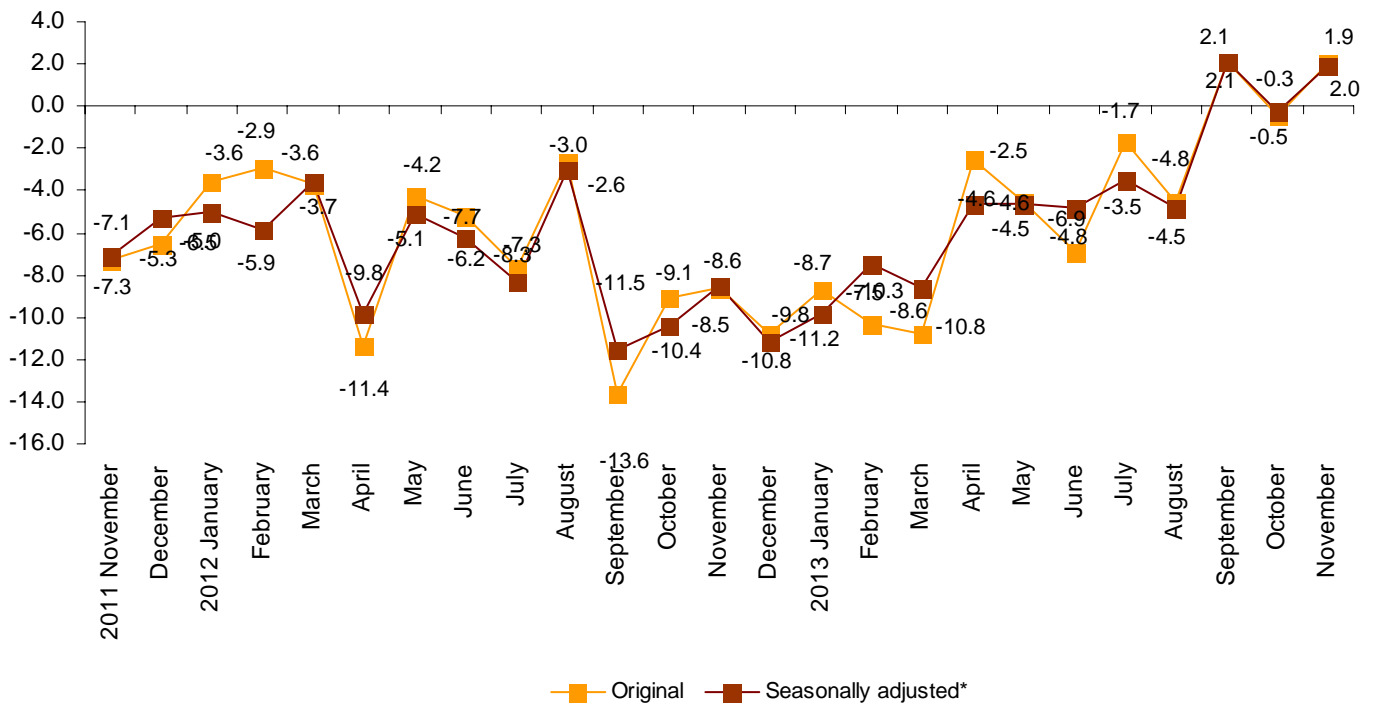
The General Retail Trade Index annual rate at constant prices stands at 1.9% in the adjusted for calendar and seasonal effects series and at 2.0% in the original series

The monthly change adjusted for calendar and seasonal effects stands at 2.0%

The General Retail Trade Index annual change at constant prices stood at 2.0% in November, two points and a half higher than that registered in October.

After adjusting the calendar and seasonal effects, the annual change registered a 1.9% variation, which is two points and two tenths lower than that registered in October.

Retail Trade General Index at constant prices
Annual rate



* Seasonally adjusted: Adjusted for seasonal and calendar effects.

Annual evolution of trade, by products

Retail sales, not including service stations, registered an annual change of 2.8% at constant prices. Breaking down the sales by type of products, we can observe that *Food* increased 0.8% and *Non-food products* increased by 4.3%.

After adjusting the calendar and seasonal effects, all products registered positive rates, as compared with the same month of the previous year except *Personal equipment* which increased 4.6%.

Annual rates of the national index at constant prices, by product

	Original index	Seasonally adjusted index
	Annual rate (%)	Annual rate (%)
GENERAL INDEX	2.0	1.9
1. Service stations	-4.6	-4.6
2. GENERAL INDEX WITHOUT SERVICE STATIONS	2.8	2.4
2.1. Food	0.8	0.7
2.2. Non-food products	4.3	3.9
2.2.1 Personal equipment	6.5	4.6
2.2.2 Household equipment	3.0	2.7
2.2.3 Other goods	2.7	2.4

Annual evolution of trade, by distribution class

All distribution classes increased their sales as compared with November 2012. *Department stores* (5.2%) and *Large Chain stores* (5.1%) registered the highest increases.

After adjusting the calendar and seasonal effects, *Large Chain stores* registered the most positive rate (5.0%).

Annual rates of the national index at constant prices, by distribution class

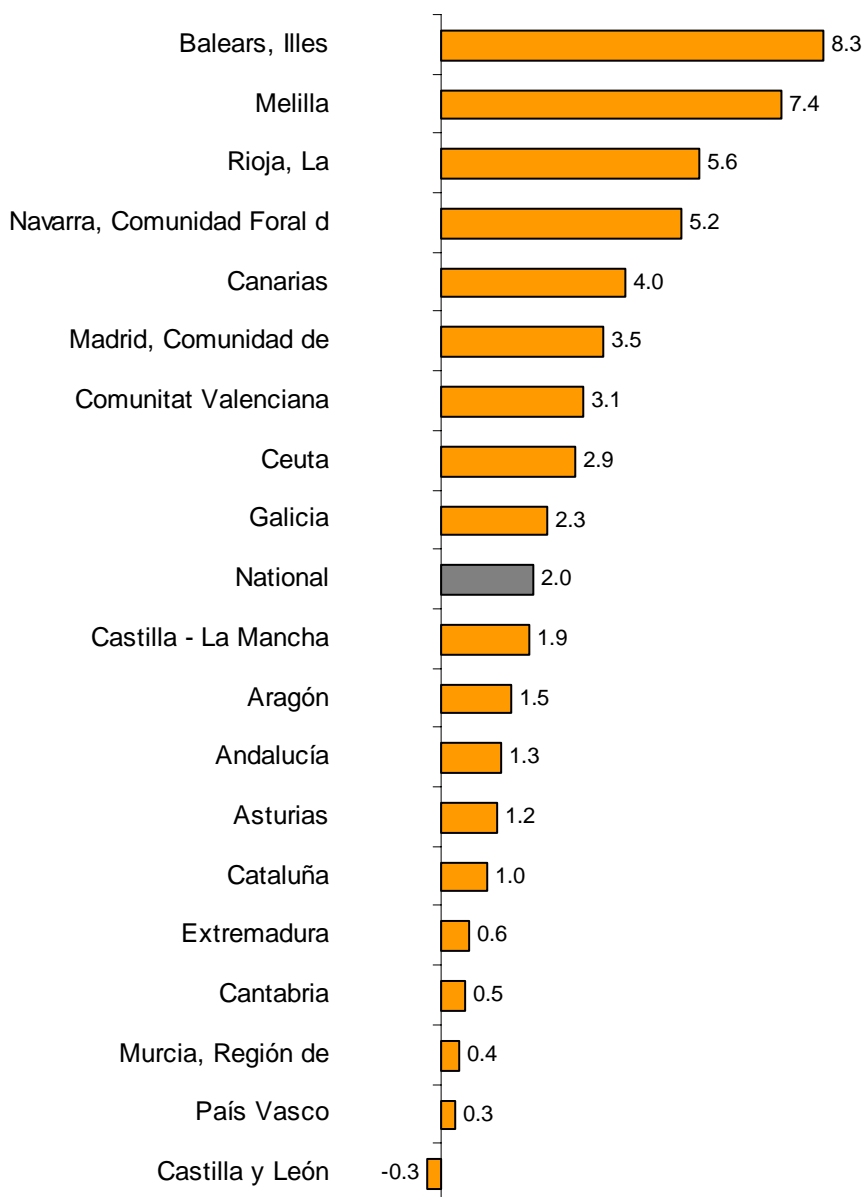
	Original index	Seasonally adjusted index
	Annual rate (%)	Annual rate (%)
GENERAL INDEX	2.0	1.9
1. Service stations	-4.6	-4.6
2. GENERAL INDEX WITHOUT SERVICE STATIONS	2.8	2.4
2.1. Single retail stores	0.5	0.5
2.2. Small chain stores	2.7	2.3
2.3. Large chain stores	5.1	5.0
2.4. Department stores	5.2	3.5

Results by Autonomous Community. Variation rates in sales

All Autonomous Communities increased their sales, as compared with November 2012, except for Castilla y León (-0.3%).

In turn, Illes Balears (8.3%), La Rioja (5.6%) and Comunidad Foral de Navarra (5.2%) registered the greatest increases.

General Index by Autonomous City and Community. Annual sales rate

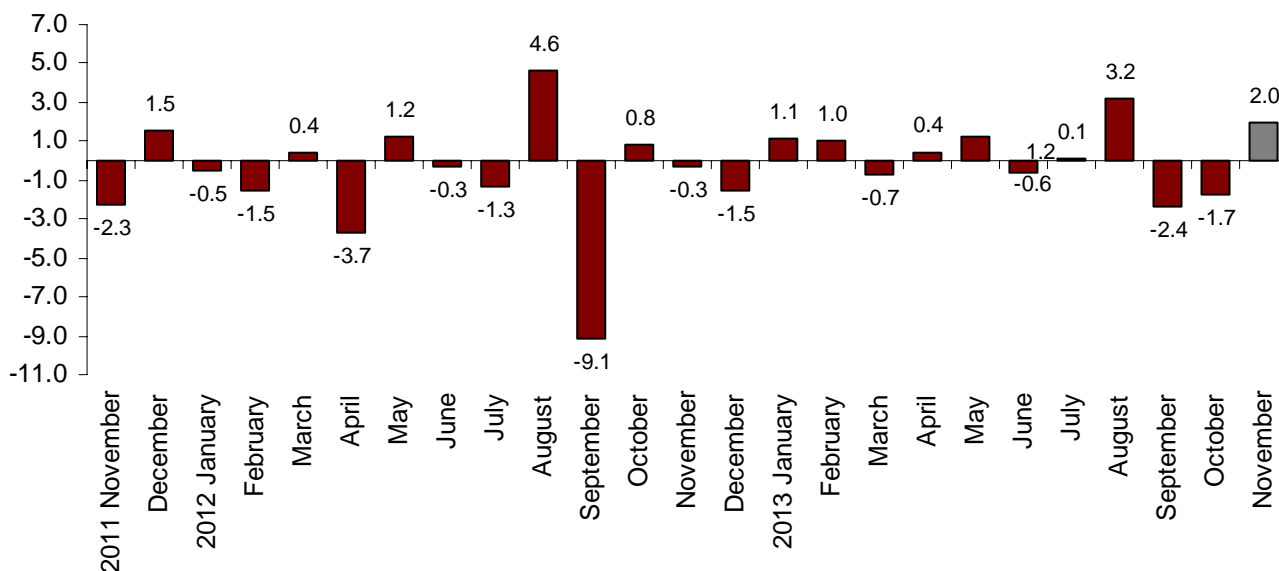


Monthly evolution of the RTI adjusted for the calendar and seasonal effects

The monthly change of the Retail Trade General Index between the months of November and October, after adjusting the calendar and seasonal effects, was 2.0%. This rate was 3.7 points higher than that registered in October.

General Index of Retail Trade at constant prices

Adjusted for seasonally and calendar effects. Monthly Rate

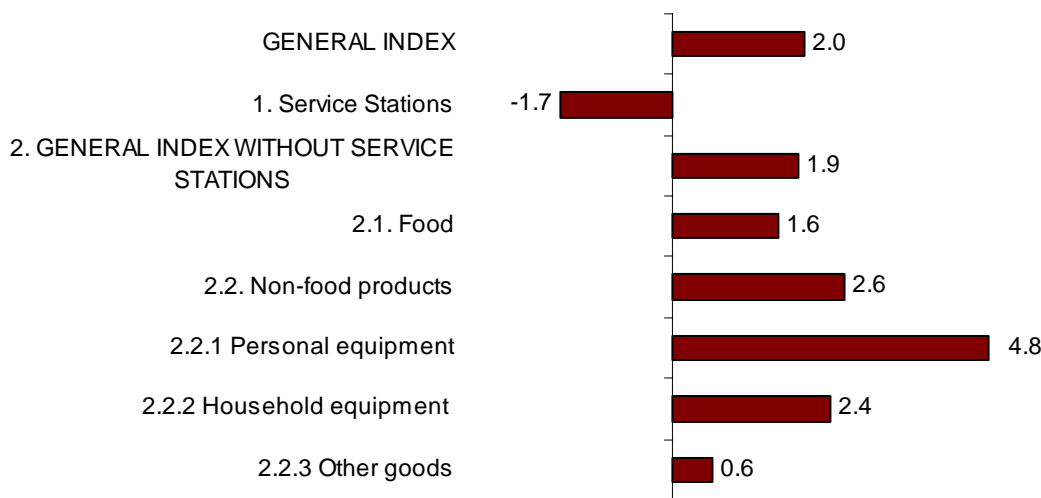


Monthly evolution of trade, by products

After adjusting the calendar and seasonal effects, the general index without service stations registered a monthly rate of 1.9. By products, *Food* increased 1.6% and *Non-food products* did so as well by 2.6%. All non-food products registered positive monthly rates.

General Index by type of products at constant prices.

Adjusted for seasonal and calendar effects. Monthly rate

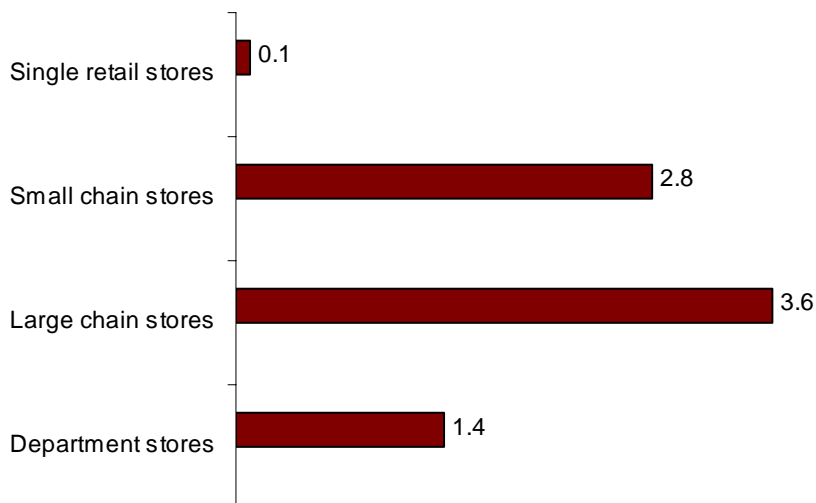


Monthly evolution of trade, by distribution class

After adjusting for calendar and seasonal effects, all distribution classes increased their sales as compared with the previous month. *Large chain stores* (3.6%) registered the greatest increases.

General Index by distribution class at constant prices.

Adjusted for seasonal and calendar effects. Monthly rate



Evolution of employment

The employment index in the Retail Trade sector in November registered an annual rate of -1.5%, as compared with the same month of 2012. This rate was four tenths higher than that registered in October.

Employment decreased by 3.2% in *Service stations*.

All distribution classes registered negative rates, *Small chain stores* (-4.3%) registered the greatest decrease, as compared with November 2012.

Employment National Indices by distribution class

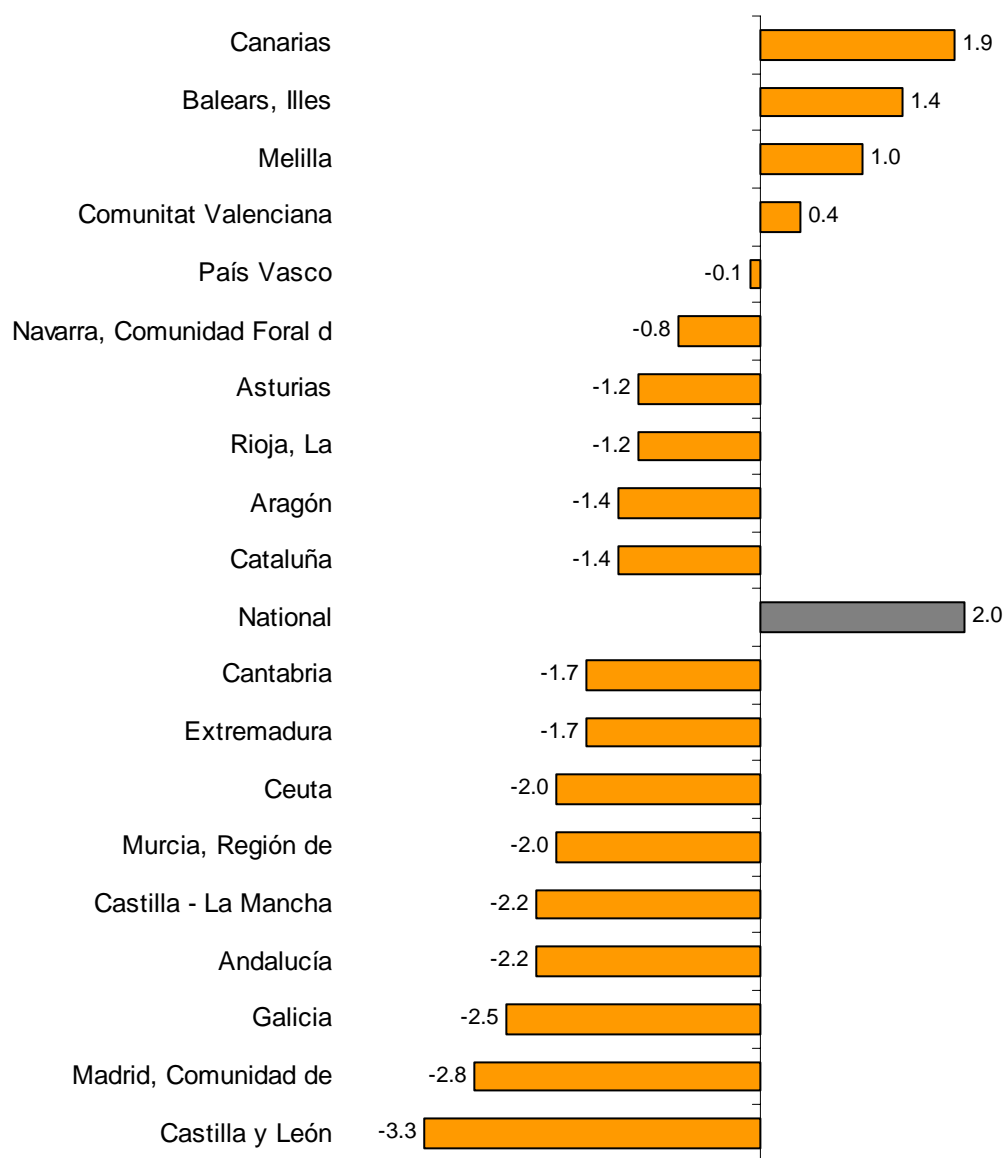
	Index	Rate (%)	
		Monthly	Annual
GENERAL INDEX	94.9	-0.1	-1.5
1. Service stations	92.9	-1.2	-3.2
2. GENERAL INDEX WITHOUT SERVICE STATIONS	95.0	-0.1	-1.4
2.1. Single retail stores	96.5	-0.6	-0.4
2.2. Small chain stores	86.3	-0.6	-4.3
2.3. Large chain stores	101.2	0.7	-1.0
2.4. Department stores	92.1	1.5	-1.9

Results by Autonomous Community. Employment variation rates

Employment in Retail Trade decreased its annual rate in all Autonomous Communities, except in Canarias (1.9%), Illes Balears (1.4%) and Comunitat Valenciana (0.4%).

Castilla y León (-3.3%), Comunidad de Madrid (-2.8%) and Galicia (-2.5%) registered the greatest decreases.

**General Index by Autonomous City and Community
Employment Index. Annual Rate**



Retail Trade Indices. Base 2010 November 2013

Provisional data

1. National indices by product

	Index	Rate (%)			Deflated index	Rate (%)		
		Monthly	Annual	Year-to-date average		Monthly	Annual	Year-to-date average
GENERAL INDEX	90.5	-1.8	2.4	-2.6	81.6	-2.4	2.0	-4.3
1. Service stations	101.1	-3.6	-4.4	-4.5	82.1	-2.5	-4.6	-4.7
2. GENERAL INDEX WITHOUT SERVICE STATIONS	89.4	-1.6	3.2	-2.4	81.7	-2.5	2.8	-4.3
2.1. Food	98.4	-3.1	2.6	0.1	89.9	-3.2	0.8	-3.2
2.2. Non-food products	83.4	-0.5	3.6	-4.3	76.2	-1.8	4.3	-5.6
2.2.1 Personal equipment	85.2	-0.9	6.8	-4.4	76.3	-5.6	6.5	-4.6
2.2.2 Household equipment	79.6	2.9	2.9	-6.2	77.2	2.7	3.0	-7.2
2.2.3 Other goods	84.7	-2.3	2.0	-3.0	77.4	-3.6	2.7	-4.3

2. National indices by distribution class

	Index	Rate (%)			Deflated index	Rate (%)		
		Monthly	Annual	Year-to-date average		Monthly	Annual	Year-to-date average
GENERAL INDEX	90.5	-1.8	2.4	-2.6	81.6	-2.4	2.0	-4.3
1. Service stations	101.1	-3.6	-4.4	-4.5	82.1	-2.5	-4.6	-4.7
2. GENERAL INDEX WITHOUT SERVICE STATIONS	89.4	-1.6	3.2	-2.4	81.7	-2.5	2.8	-4.3
2.1. Single retail stores	83.7	-4.1	0.9	-4.2	76.5	-4.9	0.5	-6.1
2.2. Small chain stores	85.0	-1.5	3.0	-3.4	77.7	-2.4	2.7	-5.3
2.3. Large chain stores	102.8	-3.3	5.5	1.4	94.0	-4.1	5.1	-0.5
2.4. Department stores	86.1	7.6	5.6	-3.1	78.7	6.7	5.2	-5.0

3. Department Stores Indices

	Index	Rate (%)			Deflated index	Rate (%)		
		Monthly	Annual	Year-to-date average		Monthly	Annual	Year-to-date average
DEPARTMENT STORES INDICES	86.1	7.6	5.6	-3.1	78.7	6.7	5.2	-5.0
1. Food	95.6	3.7	3.5	-0.2	87.4	3.6	1.6	-3.5
2. Non-food products	81.6	10.0	6.9	-4.5	74.5	8.6	7.7	-5.8

4. National indices adjusted for the calendar effect

	Index	Rate (%)			Deflated index	Rate (%)		
		Monthly	Annual	Year-to-date average		Monthly	Annual	Year-to-date average
GENERAL INDEX	90.1	-1.7	2.4	-2.5	81.2	-2.3	2.0	-4.2
1. Service stations	100.9	-3.5	-4.4	-4.4	81.9	-2.4	-4.6	-4.5
2. GENERAL INDEX WITHOUT SERVICE STATIONS	89.0	-1.5	3.2	-2.2	81.3	-2.4	2.8	-4.1
2.1. Food	98.0	-3.0	2.6	0.3	89.6	-3.1	0.8	-2.9
2.2. Non-food products	83.0	-0.4	3.6	-4.1	75.8	-1.7	4.3	-5.4
2.2.1 Personal equipment	84.8	-0.8	6.8	-4.3	76.0	-5.5	6.5	-4.4
2.2.2 Household equipment	79.1	3.1	2.9	-6.0	76.7	2.9	3.0	-7.0
2.2.3 Other goods	84.3	-2.2	2.0	-2.8	77.0	-3.5	2.7	-4.1
DISTRIBUTION CLASS								
3. Single retail stores	83.3	-4.0	0.9	-4.0	76.1	-4.8	0.5	-5.9
4. Small chain stores	84.5	-1.4	3.0	-3.2	77.3	-2.2	2.7	-5.1
5. Large chain stores	102.2	-3.2	5.5	1.6	93.4	-4.0	5.1	-0.3
6. Department stores	85.9	7.7	5.6	-2.9	78.5	6.8	5.2	-4.8

5. National Indices adjusted for the calendar and seasonal effects

	Index	Rate (%)			Deflated index	Rate (%)		
		Monthly	Annual	Year-to-date average		Monthly	Annual	Year-to-date average
GENERAL INDEX	93.2	2.2	2.3	-2.5	85.0	2.0	1.9	-4.2
1. Service stations	103.3	-0.7	-4.4	-4.4	81.3	-1.7	-4.6	-4.5
2. GENERAL INDEX WITHOUT SERVICE STATIONS	92.2	1.9	2.8	-2.3	85.8	1.9	2.4	-4.1
2.1. Food	101.1	0.2	2.2	0.2	93.0	1.6	0.7	-3.0
2.2. Non-food products	85.9	2.4	3.0	-4.1	81.0	2.6	3.9	-5.3
2.2.1 Personal equipment	89.3	5.6	5.3	-4.2	88.5	4.8	4.6	-4.2
2.2.2 Household equipment	79.4	2.5	2.7	-6.0	77.3	2.4	2.7	-7.0
2.2.3 Other goods	87.9	0.6	1.5	-3.1	82.7	0.6	2.4	-4.2
DISTRIBUTION CLASS								
3. Single retail stores	85.6	0.2	0.8	-4.1	79.6	0.1	0.5	-6.0
4. Small chain stores	88.3	2.8	2.6	-3.3	82.1	2.8	2.3	-5.1
5. Large chain stores	106.9	3.8	5.3	1.6	99.3	3.6	5.0	-0.3
6. Department stores	88.4	1.9	4.6	-2.7	81.9	1.4	3.5	-4.7

6. Retail Trade General Index Adjusted for the calendar and seasonal effect

		Rate (%)					
		Annual ¹		Quarterly ²		Monthly ³	
		Current prices	Constant prices	Current prices	Constant prices	Current prices	Constant prices
	2009	-7.1	-5.5				
	2010	0.7	-1.7				
	2011	-1.6	-5.6				
	2012	-4.4	-7.4				
	2013	-2.5	-4.2				
2011	TIV	-3.2	-6.5	-1.3	-2.1		
2012	TI	-2.5	-4.8	-0.4	-1.2		
	TII	-4.6	-7.1	-2.4	-3.3		
	TIII	-4.1	-7.6	0.0	-1.2		
	TIV	-6.5	-10.0	-3.8	-4.7		
2013	TI	-5.6	-8.6	0.5	0.4		
	TII	-2.9	-4.7	0.5	0.9		
	TIII	-1.1	-2.2	1.8	1.4		
	TIV	1.0	0.8	-1.2	-1.3		
2012	NOV	-5.1	-8.5			-0.4	-0.3
	DIC	-7.9	-11.2			-1.5	-1.5
2013	ENE	-6.7	-9.8			1.1	1.1
	FEB	-4.3	-7.5			1.3	1.0
	MAR	-5.9	-8.6			-0.8	-0.7
	ABR	-3.3	-4.6			-0.3	0.4
	MAY	-2.9	-4.6			1.5	1.2
	JUN	-2.5	-4.8			-0.3	-0.6
	JUL	-1.7	-3.5			0.2	0.1
	AGO	-3.6	-4.8			3.4	3.2
	SEP	2.3	2.1			-2.6	-2.4
	OCT	-0.3	-0.3			-1.6	-1.7
	NOV	2.3	1.9			2.2	2.0

Note:

¹ **Annual rate:** Variation of a period as compared with the same period of the previous year

² **Quarterly rate:** Variation of a quarter as compared with the previous quarter.

In the current quarter it is the quarter-to-date as compared with the previous quarter

³ **Monthly rate:** Variation of a month as compared with the previous month

7. Employment National Indices by distribution class

	Index	Rate (%)		
		Monthly	Annual	Year-to-date average
GENERAL INDEX	94.9	-0.1	-1.5	-1.9
1. Service stations	92.9	-1.2	-3.2	-3.7
2. GENERAL INDEX WITHOUT SERVICE STATIONS	95.0	-0.1	-1.4	-1.9
2.1. Single retail stores	96.5	-0.6	-0.4	-1.1
2.2. Small chain stores	86.3	-0.6	-4.3	-4.7
2.3. Large chain stores	101.2	0.7	-1.0	-0.5
2.4. Department stores	92.1	1.5	-1.9	-3.4

8. General index of retail trad by Autonomous City and Community

	Index	Rate (%)			Deflated index	Rate (%)		
		Monthly	Annual	Year-to-date average		Monthly	Annual	Year-to-date average
NATIONAL INDEX	90.5	-1.8	2.4	-2.6	81.6	-2.4	2.0	-4.3
Andalucía	88.5	0.1	1.9	-2.2	79.9	-0.6	1.3	-4.0
Aragón	89.8	-2.8	1.5	-3.0	81.2	-3.3	1.5	-4.5
Asturias, Principado de	86.3	-2.7	1.7	-3.3	77.4	-3.9	1.2	-5.0
Balears, Illes	90.1	-13.5	9.1	4.4	81.5	-14.5	8.3	2.6
Canarias	97.8	2.4	3.5	-0.2	90.8	2.0	4.0	-0.9
Cantabria	86.9	-3.4	1.7	-2.8	76.9	-4.5	0.5	-5.5
Castilla y León	91.4	-3.9	0.2	-4.3	81.5	-4.5	-0.3	-6.1
Castilla - La Mancha	89.6	-2.9	2.1	-3.2	80.3	-3.3	1.9	-4.9
Cataluña	91.0	-2.1	1.3	-2.7	81.6	-2.7	1.0	-4.6
Comunitat Valenciana	89.1	-1.8	3.5	-2.2	80.4	-2.3	3.1	-3.9
Extremadura	96.1	-2.7	0.7	-2.9	86.8	-3.0	0.6	-4.7
Galicia	89.3	-3.2	2.7	-3.9	80.4	-3.8	2.3	-5.5
Madrid, Comunidad de	91.1	-1.5	3.7	-3.0	82.8	-1.9	3.5	-4.4
Murcia, Región de	85.6	-1.1	1.1	-4.2	76.7	-1.9	0.4	-6.4
Navarra, Comunidad Foral de	94.4	-5.2	4.8	-1.5	85.3	-6.4	5.2	-2.9
País Vasco	91.7	0.0	0.9	-4.9	82.7	-0.8	0.3	-6.5
Rioja, La	93.7	-1.3	5.9	-2.0	83.6	-2.5	5.6	-3.6
Ceuta	95.2	1.3	1.9	-0.6	89.0	1.2	2.9	-1.1
Melilla	98.0	1.8	6.1	-1.6	92.4	1.7	7.4	-1.6

9. General index without service stations by Autonomous City and Community

	Index	Rate (%)			Deflated index	Rate (%)		
		Monthly	Annual	Year-to-date average		Monthly	Annual	Year-to-date average
NATIONAL INDEX	89.4	-1.6	3.2	-2.4	81.7	-2.5	2.8	-4.3
Andalucía	86.6	-0.6	3.0	-1.7	79.3	-1.5	2.4	-3.7
Aragón	88.1	-3.3	1.6	-3.1	80.3	-4.0	1.5	-4.9
Asturias, Principado de	85.2	-2.6	1.5	-3.5	77.3	-4.1	1.2	-5.3
Balears, Illes	89.4	-13.4	9.0	4.4	82.5	-14.6	8.5	2.5
Canarias	95.4	3.4	3.9	-1.0	91.3	2.7	3.6	-1.5
Cantabria	84.2	-2.8	1.8	-3.8	75.9	-4.3	0.6	-6.6
Castilla y León	91.0	-2.8	1.5	-4.2	82.2	-3.6	1.0	-6.2
Castilla - La Mancha	88.6	-3.0	3.1	-2.6	80.3	-3.6	2.8	-4.4
Cataluña	89.7	-1.7	2.7	-2.1	81.3	-2.6	2.4	-4.4
Comunitat Valenciana	88.4	-1.4	4.0	-2.0	80.9	-2.1	3.7	-3.9
Extremadura	93.7	-2.5	1.3	-2.3	85.8	-3.0	1.1	-4.3
Galicia	88.2	-2.6	3.1	-4.0	80.3	-3.5	2.7	-5.9
Madrid, Comunidad de	92.2	-1.3	4.2	-2.7	84.9	-1.9	4.1	-4.4
Murcia, Región de	83.3	-0.5	1.9	-4.2	75.8	-1.6	1.2	-6.6
Navarra, Comunidad Foral de	92.5	-5.1	6.5	-0.6	84.6	-6.6	7.0	-2.1
País Vasco	90.5	0.5	1.4	-5.2	82.5	-0.5	0.8	-7.0
Rioja, La	92.7	-1.7	7.1	-1.7	83.4	-3.2	6.9	-3.6
Ceuta	93.3	1.9	0.5	-1.6	87.8	1.7	1.1	-2.4
Melilla	97.1	1.7	5.5	-1.8	92.0	1.4	6.3	-2.2

10. Employment general index by Autonomous City and Community

	Index	Rate (%)		
		Monthly	Annual	Year-to-date average
NATIONAL INDEX	94.9	-0.1	-1.5	-1.9
Andalucía	91.3	0.5	-2.2	-3.0
Aragón	95.7	0.0	-1.4	-0.5
Asturias, Principado de	92.9	-0.2	-1.2	-2.3
Balears, Illes	96.3	-4.3	1.4	0.3
Canarias	100.0	0.7	1.9	-0.7
Cantabria	96.2	-0.1	-1.7	-2.8
Castilla y León	96.3	0.2	-3.3	-3.1
Castilla - La Mancha	95.7	-0.8	-2.2	-1.9
Cataluña	96.8	-0.2	-1.4	-1.4
Comunitat Valenciana	95.5	-0.5	0.4	0.1
Extremadura	96.8	-0.3	-1.7	-1.2
Galicia	95.9	0.1	-2.5	-2.9
Madrid, Comunidad de	93.4	-0.4	-2.8	-3.4
Murcia, Región de	92.0	0.1	-2.0	-2.7
Navarra, Comunidad Foral de	94.7	0.6	-0.8	-1.5
País Vasco	96.0	0.3	-0.1	-0.9
Rioja, La	97.8	0.0	-1.2	-1.2
Ceuta	98.7	-0.2	-2.0	-3.0
Melilla	101.0	0.4	1.0	0.6

11. Employment general index without service stations by Autonomous City and Community

	Index	Rate (%)		
		Monthly	Annual	Year-to-date average
NATIONAL INDEX	95.0	-0.1	-1.4	-1.9
Andalucía	91.3	0.6	-2.2	-3.0
Aragón	95.7	-0.1	-1.4	-0.4
Asturias, Principado de	92.7	-0.2	-1.2	-2.3
Balears, Illes	96.3	-4.4	1.5	0.3
Canarias	99.7	0.8	1.9	-0.8
Cantabria	96.2	0.0	-1.7	-2.8
Castilla y León	96.5	0.3	-3.3	-3.1
Castilla - La Mancha	96.2	-0.7	-1.9	-1.5
Cataluña	97.1	-0.2	-1.3	-1.3
Comunitat Valenciana	95.7	-0.5	0.6	0.3
Extremadura	96.9	-0.2	-1.7	-1.2
Galicia	96.0	0.1	-2.5	-2.9
Madrid, Comunidad de	93.4	-0.5	-3.0	-3.4
Murcia, Región de	91.9	0.2	-1.9	-2.6
Navarra, Comunidad Foral de	94.8	0.6	-0.6	-1.3
País Vasco	96.0	0.3	-0.1	-0.8
Rioja, La	98.2	0.0	-1.1	-1.1
Ceuta	98.8	-0.2	-2.2	-2.9
Melilla	101.2	0.4	1.0	0.6