

6 March 2015

Industrial Production Index (IPI). Base 2010
January 2015. *Provisional data*

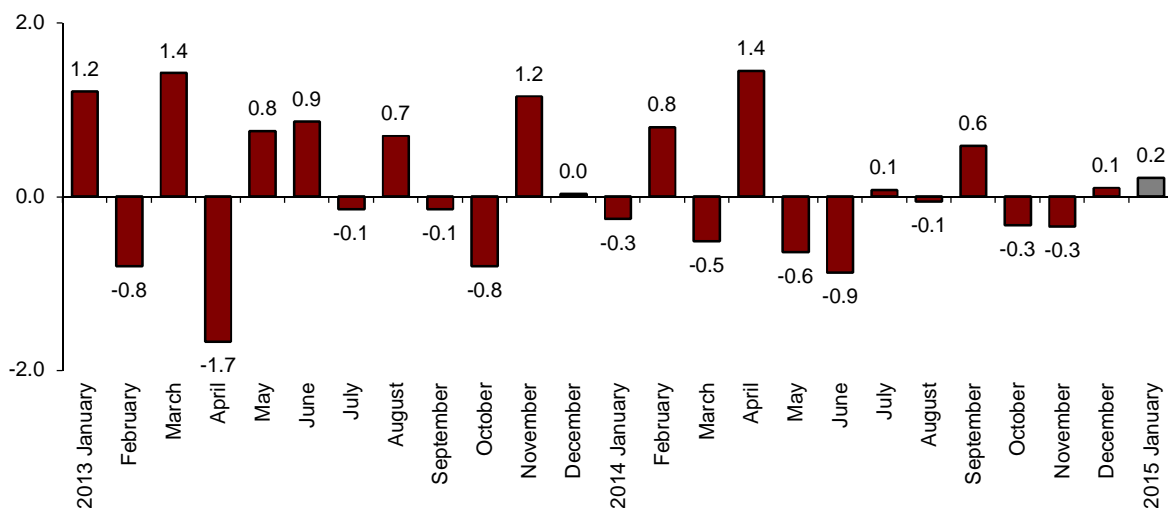
The monthly variation of the Industrial Production Index stands at 0.2%, after adjusting the seasonal and calendar effects

The annual rate of the Industrial Production Index stands at 0.4% in the series adjusted for the seasonal and calendar effects and at -2.0% in the original series

Monthly evolution of the Industrial Production

After adjusting the seasonal and calendar effects, the monthly variation of the Industrial Production Index (IPI) between January 2015 and December 2014 stood at 0.2%. This rate was 0.1 points higher than that registered in December.

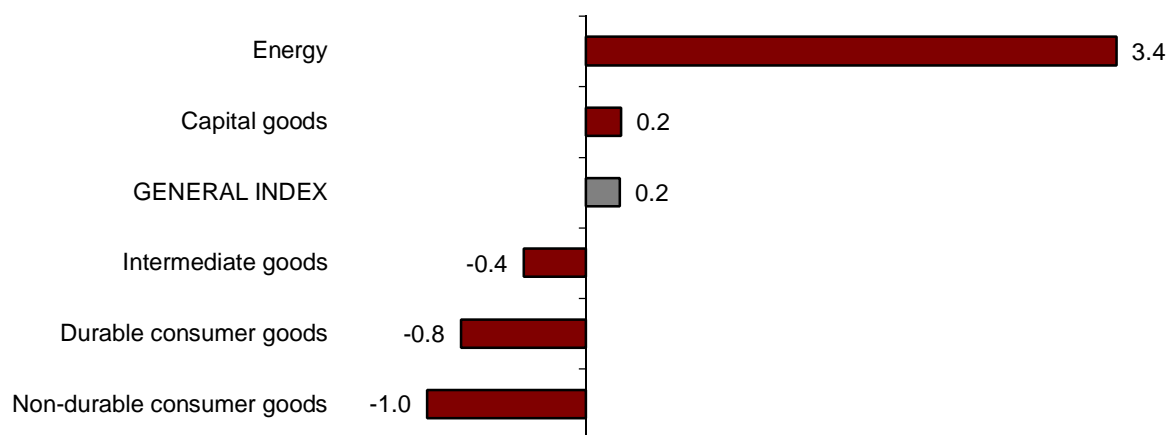
General Industrial Production Index
Adjusted for seasonal and calendar effects. Monthly rate



By industrial sectors, Energy (3.4%) and Capital goods (0.2%) registered a positive monthly variation rate.

In turn, Non-durable consumer goods (-1.0%) and Durable consumer goods (-0.8%) registered the greatest negative variation rates.

Industrial Production Indices: General and by economic destination of the goods. Adjusted for seasonal and calendar effects. Monthly rate



A more detailed analysis showed the activities that registered the highest and lowest monthly rates in the month of January.

Activities with the highest annual rates of the Industrial Production Indices adjusted for seasonal and calendar effects

Activity (Division from CNAE 2009)	Monthly rate (%)
Repair and installation of machinery and equipment	11.0
Manufacture of motor vehicles, trailers and semi-trailers	6.0
Tobacco industry	6.0

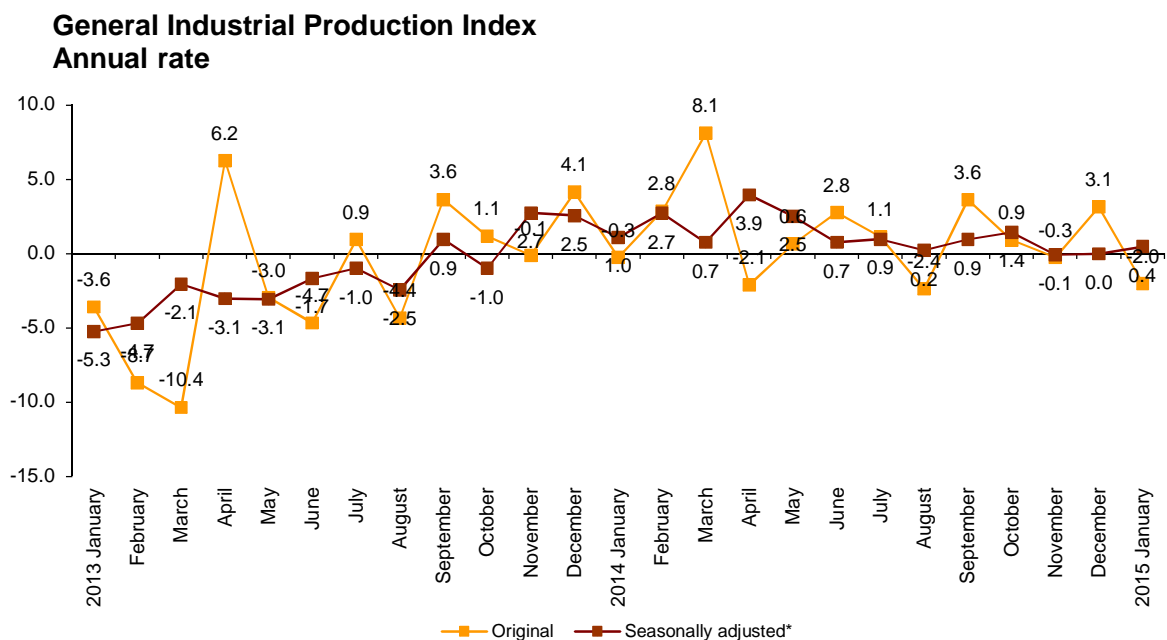
Activities with the lowest annual rates of the Industrial Production Indices adjusted for seasonal and calendar effects

Activity (Division from CNAE 2009)	Monthly rate (%)
Extraction of anthracite, coal and lignite	-23.7
Manufacture of other transport equipment	-9.1
Other manufacturing industries	-9.1

Annual evolution of the Industrial Production

After adjusting the seasonal and calendar effects, the Industrial Production Index (IPI) registered a variation of 0.4% in January, as compared with the same month of the previous year. This rate was 0.4 points higher than that registered in December.

The original series of the Industrial Production Index recorded an annual variation of -2.0%. This rate was 5.1 points lower than that of December.



After adjusting the seasonal and calendar effects, Energy (3.9%), Capital goods (1.1%) and Intermediate goods (1.0%) registered positive annual rates.

In turn, Non-durable consumer goods (-2.4%), Durable consumer goods (-1.0%) registered negative annual rates.

Annual rates of the Industrial Production Indices: General and by economic destination of the goods

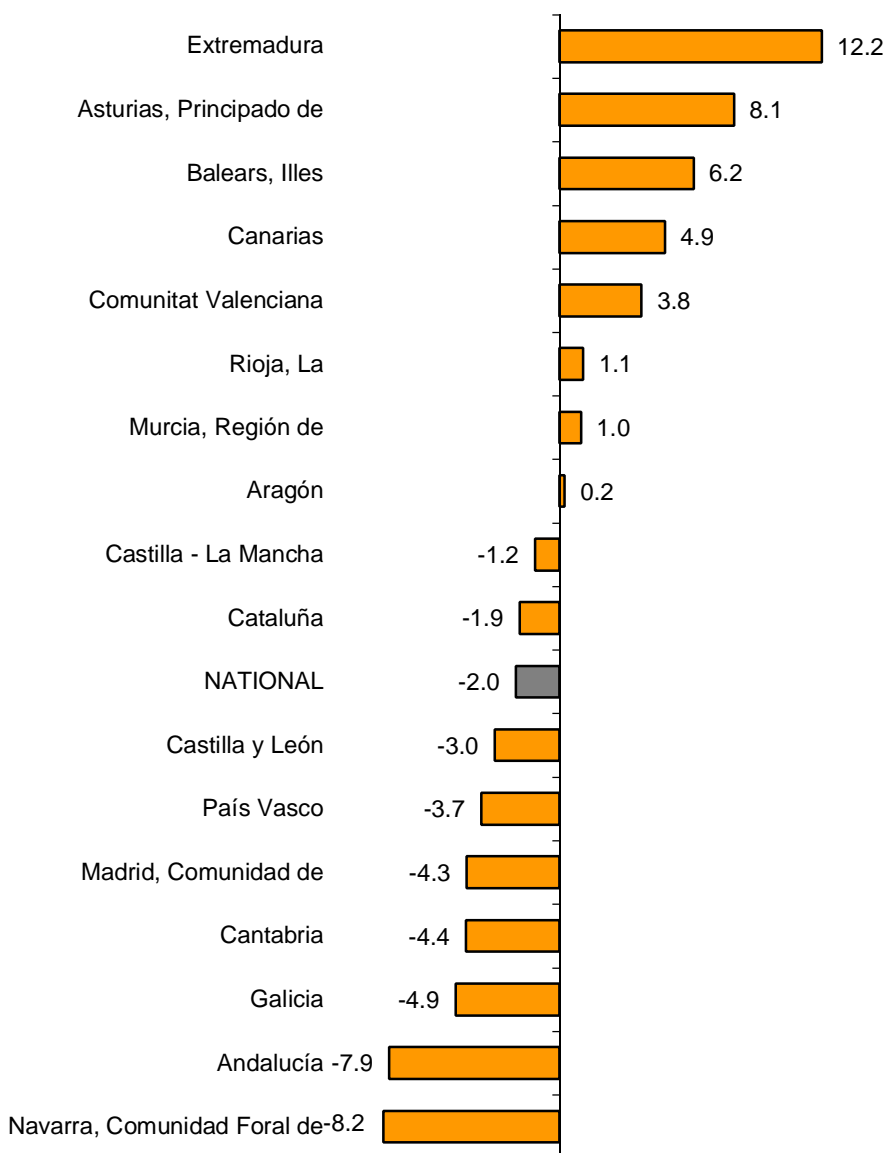
	Original index	Seasonally adjusted index
	Annual rate(%)	Annual rate (%)
GENERAL INDEX	-2.0	0.4
1. Consumer goods	-6.5	-2.7
1.1. Durable consumer goods	-4.2	-1.0
1.2. Non-durable consumer goods	-6.7	-2.4
2. Capital goods	-1.7	1.1
3. Intermediate goods	-1.6	1.0
4. Energy	3.2	3.9

Results by Autonomous Community. Annual variation rates of the Industrial Production. Original series

The annual rates of the original series of the Industrial Production increased in 8 Autonomous Communities, as compared with the same month of the previous year. The greatest increases were registered in Extremadura (12.2%), Principado de Asturias (8.1%), and Illes Balears (6.2%).

In turn, the greatest decreases were registered in Comunidad Foral de Navarra (-8.2%), Andalucía (-7.9%) and Galicia (-4.9%).

**General indices: national and by Autonomous Community
Annual rate of the Industrial Production Index**



Industrial Production Indices. Base 2010

January 2015

Provisional data

1. General index by economic destination of the goods. Adjusted for seasonal and calendar effects

	Index	Rate (%)		
		Monthly	Annual	Year-to-date average
GENERAL INDEX	91.6	0.2	0.4	0.4
1. Consumer goods	91.3	-0.9	-2.7	-2.7
1.1. Durable consumer goods	66.5	-0.8	-1.0	-1.0
1.2. Non-durable consumer goods	94.4	-1.0	-2.4	-2.4
2. Capital goods	92.4	0.2	1.1	1.1
3. Intermediate goods	88.9	-0.4	1.0	1.0
4. Energy	95.1	3.4	3.9	3.9

2. General index by economic destination of the goods. Adjusted for calendar effects

	Index	Rate (%)	
		Annual	Year-to-date average
GENERAL INDEX	89.2	0.4	0.4
1. Consumer goods	88.4	-3.1	-3.1
1.1. Durable consumer goods	58.4	-0.6	-0.6
1.2. Non-durable consumer goods	91.6	-3.7	-3.7
2. Capital goods	83.9	1.4	1.4
3. Intermediate goods	86.8	0.8	0.8
4. Energy	100.4	4.0	4.0

3. General index by economic destination of the goods. Original indices

	Index	Rate (%)		Repercussion Annual
		Annual	Year-to-date average	
GENERAL INDEX	87.7	-2.0	-2.0	
1. Consumer goods	86.2	-6.5	-6.5	-1.871
1.1. Durable consumer goods	56.9	-4.2	-4.2	-0.081
1.2. Non-durable consumer goods	89.6	-6.7	-6.7	-1.789
2. Capital goods	82.2	-1.7	-1.7	-0.329
3. Intermediate goods	85.4	-1.6	-1.6	-0.496
4. Energy	100.1	3.2	3.2	0.654

4. General index by branch of activity (CNAE 2009)

	Index	Rate (%)		Repercussion
		Annual	Year-to-date average	Annual
GENERAL INDEX	87.7	-2.0	-2.0	
B. Mining and quarrying industries	47.6	-9.5	-9.5	-0.064
Extraction of anthracite, coal and lignite	35.1	-38.8	-38.8	-0.066
National crude petroleum and natural gas
Extraction of metallic ores
Other mining and quarrying	50.3	2.5	2.5	0.012
C. Manufacturing industry	85.8	-3.1	-3.1	-2.525
Food Industry	96.4	-6.9	-6.9	-0.967
Manufacture of beverages.	80.4	-8.1	-8.1	-0.279
Tobacco industry.	86.1	-9.3	-9.3	-0.030
Textile industry	86.7	1.1	1.1	0.012
Manufacture of garments	73.4	-13.9	-13.9	-0.175
Leather and footwear industry	91.9	-17.5	-17.5	-0.165
Manufacture of wood and of products of wood and cork, except furniture; basketm	72.8	-2.2	-2.2	-0.027
Manufacture of paper and paper-products	100.3	-2.2	-2.2	-0.067
Graphic arts and reproduction of recorded media	65.7	-2.8	-2.8	-0.049
Manufacture of coke and refined petroleum products	111.1	9.1	9.1	0.181
Chemical Industry	96.1	1.2	1.2	0.076
Manufacture of pharmaceutical products	99.5	-3.3	-3.3	-0.124
Rubber and plastic material transformation industry	94.8	0.5	0.5	0.023
Manufacture of other non-metallic ore products	62.5	-3.5	-3.5	-0.130
Metallurgy; manufacture of iron, steel and ferro-alloy products	94.2	-4.1	-4.1	-0.169
Manufacture of metal products, except machinery and equipment	73.2	-5.9	-5.9	-0.448
Manufacture of computers, electronic and optical products	68.3	6.3	6.3	0.065
Manufacture of electrical material and equipment	75.7	-4.3	-4.3	-0.124
Manufacture of machinery and equipment n.e.c.	80.4	-12.5	-12.5	-0.542
Manufacture of motor vehicles, trailers and semi-trailers	109.2	8.8	8.8	0.640
Manufacture of other transport equipment	63.8	-11.6	-11.6	-0.257
Manufacture of furniture.	54.1	-3.0	-3.0	-0.035
Other manufacturing industries	89.0	-5.4	-5.4	-0.062
Repair and installation of machinery and equipment	77.8	6.7	6.7	0.128
D. Supply of electrical energy, gas, steam and air conditioning	104.0	4.6	4.6	0.742
E. Water supply, activities, waste management and decontamination*	76.4	-8.4	-8.4	-0.195

* It only includes Water collection, treatment and supply

(..) Data not available due to statistical secrecy.

5. General Industrial Production Indices: national and by Autonomous Community

	Index	Rate (%)	
		Annual	Year-to-date average
NACIONAL	87.7	-2.0	-2.0
Andalucía	84.4	-7.9	-7.9
Aragón	92.1	0.2	0.2
Asturias, Principado de	95.2	8.1	8.1
Balears, Illes	82.4	6.2	6.2
Canarias	94.0	4.9	4.9
Cantabria	87.8	-4.4	-4.4
Castilla y León	89.6	-3.0	-3.0
Castilla-La Mancha	84.5	-1.2	-1.2
Cataluña	93.6	-1.9	-1.9
Comunitat Valenciana	92.8	3.8	3.8
Extremadura	76.6	12.2	12.2
Galicia	84.2	-4.9	-4.9
Madrid, Comunidad de	77.5	-4.3	-4.3
Murcia, Región de	81.5	1.0	1.0
Navarra, Comunidad Foral de	87.4	-8.2	-8.2
País Vasco	82.8	-3.7	-3.7
Rioja, La	90.1	1.1	1.1

More detailed information by Autonomous Community may be obtained at:

Andalucía	www.juntadeandalucia.es/institutodeestadisticaycartografia
Aragón	www.aragon.es/iaest/ipi
Principado de Asturias	www.sadei.es
Illes Balears	www.ibestat.caib.es
Canarias	www.gobiernodecanarias.org/istac
Cantabria	www.icane.es
Castilla y León	www.jcyl.es/estadistica
Castilla - La Mancha	www.jccm.es/estadistica
Cataluña	www.idescat.cat
Comunitat Valenciana	www.ive.es
Extremadura	http://estadistica.gobex.es
Galicia	www.ige.xunta.es
Comunidad de Madrid	www.madrid.org/iestadis
Región de Murcia	www.carm.es/econet
La Rioja	www.larioja.org

For further information see INEbase - www.ine.es/en/

All press releases at: www.ine.es/en/prensa/prensa_en.htm

Press Office: Telephone numbers: 91 583 93 63 / 94 08 – Fax: 91 583 90 87 - gpresa@ine.es

Information Area: Telephone number: 91 583 91 00 – Fax: 91 583 91 58 – www.ine.es/infoine/?L=1