

8 March 2016

**Industrial Production Indices (IPI). Base 2010**  
January 2017. *Provisional data*

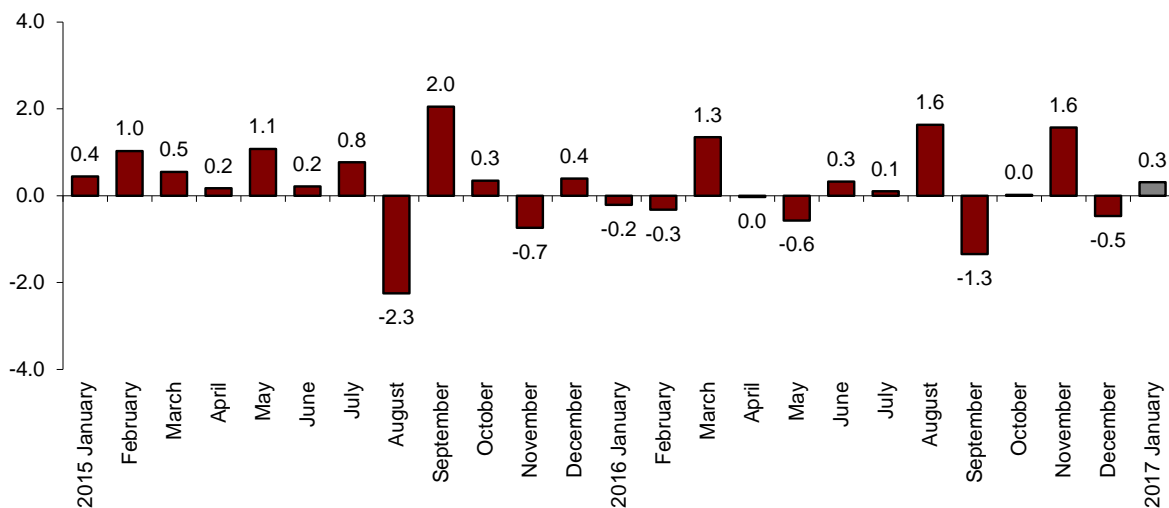
**The monthly variation in the Industrial Production Index is 0.3% when adjusted for seasonal and calendar effects.**

**The annual rate of the Industrial Production Index stands at 2.5% in the series adjusted for seasonal and calendar effects and at 7.1% in the original series.**

**Monthly evolution of Industrial Production**

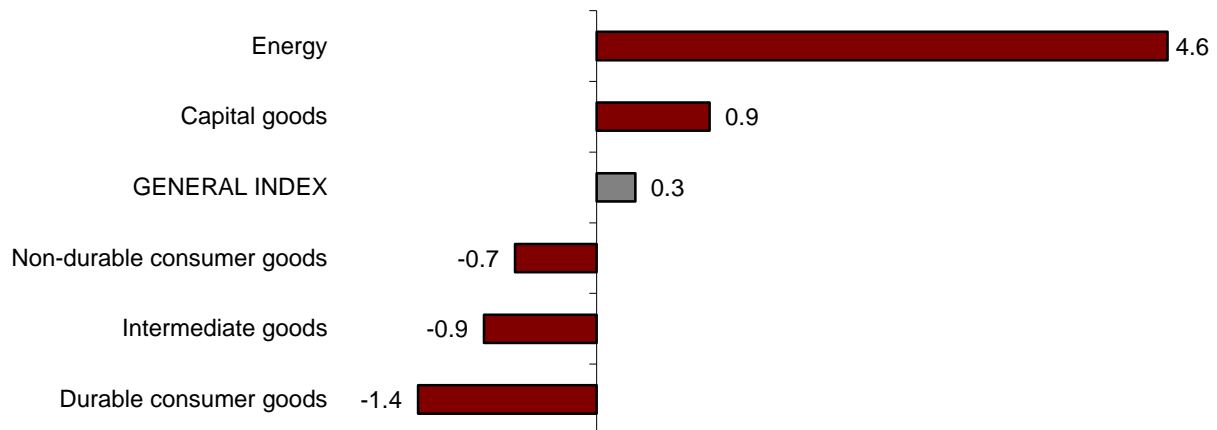
The monthly variation of the Industrial Production Indices (IPI) between the months of January 2017 and December 2016, after adjusting for seasonal and calendar effects, is 0.3%. This rate is 0.8 points greater than that observed in December.

**General Industrial Production Index**  
**Adjusted for seasonal and calendar effects. Monthly rate**



By sector, *Energy* (4.6%) and *Capital goods* (0.9%) have positive monthly rates. Conversely, *Durable consumer goods* (-1.4%), *Intermediate goods* (-0.9%) and *Non-durable consumer goods* (-0.7%) show negative rates.

**Industrial Production Indices: General and by economic destination of the goods. Adjusted for seasonal and calendar effects. Monthly rate**



A more detailed analysis shows the industries with the greatest and lowest monthly rates in the month of January.

**Activities with the highest annual rates of the Industrial Production Indices adjuted for seasonal and calendar effects**

Activity (Division from CNAE 2009)	Monthly rate (%)
Manufacture of computers, electronic and optical products	9.1
Supply of electrical energy, gas, steam and air conditioning	7.3
Other manufacturing industries	5.9

**Activities with the lowest annual rates of the Industrial Production Indices adjuted for seasonal and calendar effects**

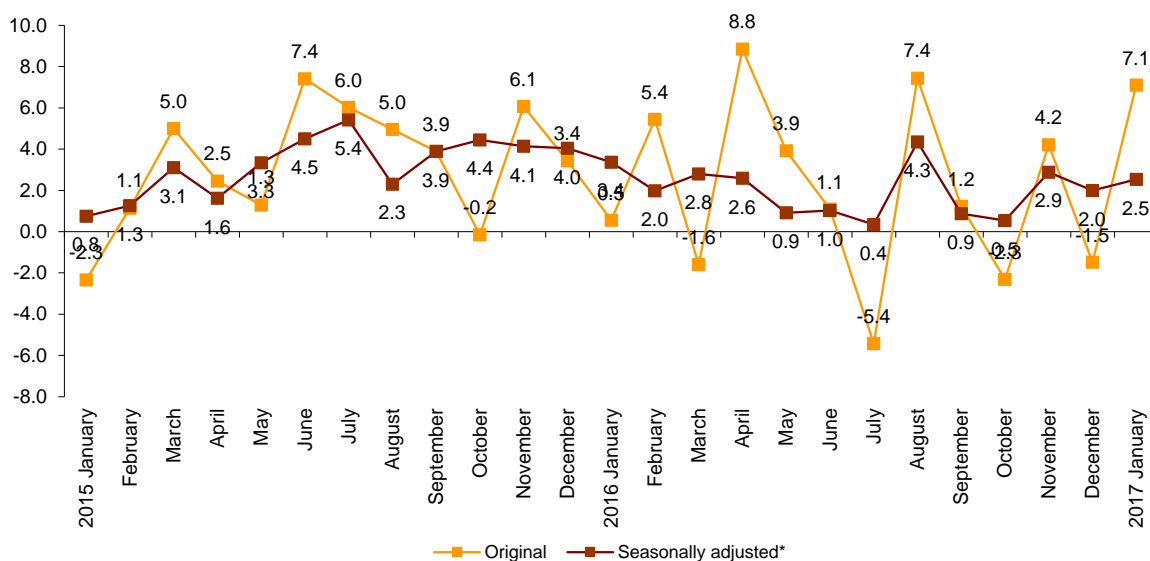
Activity (Division from CNAE 2009)	Monthly rate (%)
Manufacture of other transport equipment	-6.8
Manufacture of machinery and equipment n.e.c.	-6.5
Manufacture of beverages	-3.6

### Annual evolution of Industrial Production

In January, the monthly variation of the Industrial Production Index adjusted for seasonal and calendar effects stands at 2.5% in relation to the same month of the previous year. This rate is 0.5 points more than that recorded in December.

Annual variation of the original series of IPI stands at 7.1%. This rate is 8.6 points higher than December.

**General Industrial Production Index  
Annual rate**



In the data adjusted for seasonal and calendar effects, *Energy* (9.5%) and *Durable consumer goods* (3.3%) are the sectors that show the greatest annual increase.

Conversely, *Non-durable consumer goods* (-0.8%) and *Capital goods* (-0.2%) experienced the greatest annual decrease.

### Annual rates of the Industrial Production Indices: General and by economic destination of the goods

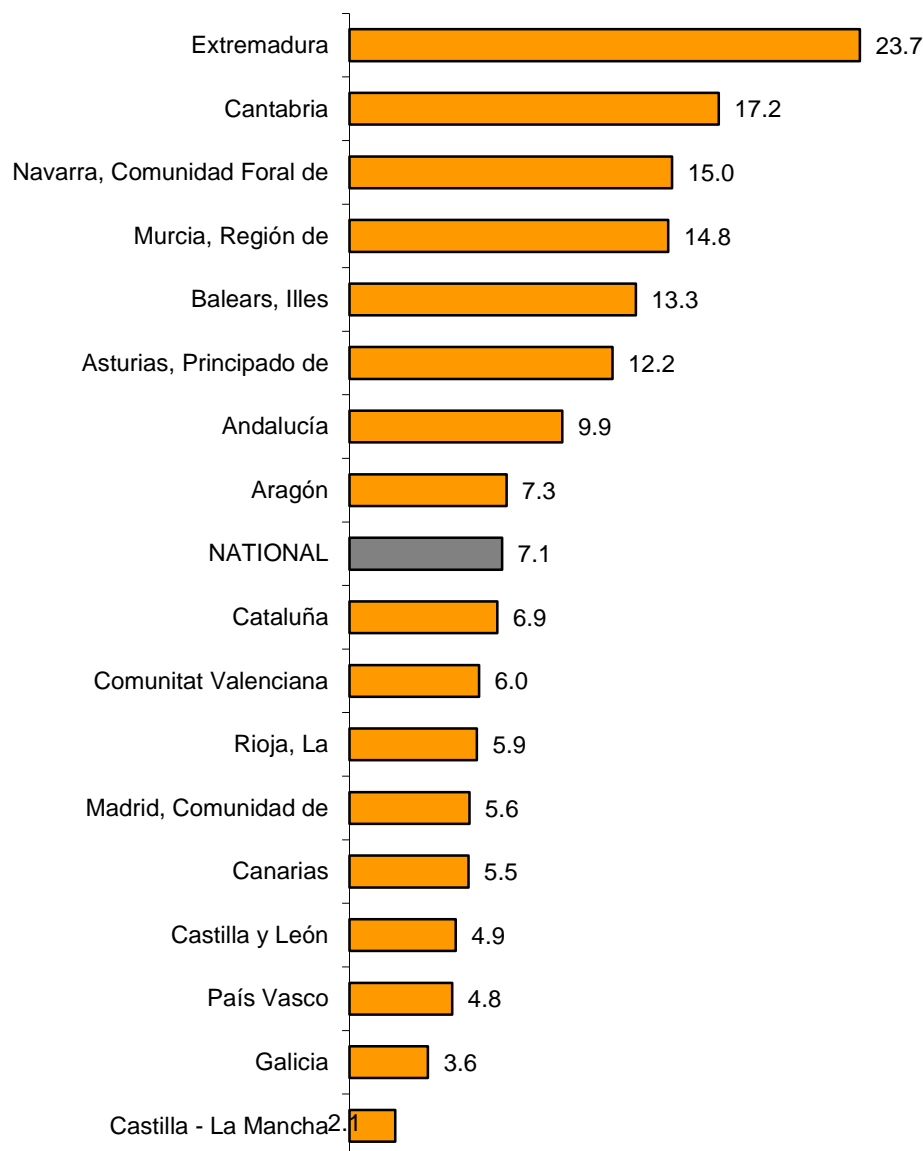
	Original index	Seasonally adjusted index
	Annual rate(%)	Annual rate (%)
<b>GENERAL INDEX</b>	7.1	2.5
1. Consumer goods	4.4	-0.9
1.1. Durable consumer goods	10.2	3.3
1.2. Non-durable consumer goods	4.0	-0.8
2. Capital goods	5.6	-0.2
3. Intermediate goods	7.9	3.1
4. Energy	11.1	9.5

### Results by Autonomous Community. Annual variation rates of Industrial Production. Original series

The annual rate of industrial production is positive in all autonomous communities in January. The greatest increases are recorded in Extremadura (23.7%), Cantabria (17.2%) and Comunidad Foral de Navarra (15.0%).

Meanwhile, the communities with the lowest rates of growth are Castilla-La Mancha (2.1%), Galicia (3.6%) and País Vasco (4.8%).

### General indices: national and by Autonomous Community Annual rate of the Industrial Production Index



## Industrial Production Indices. Base 2010

### January 2017

Provisional data

#### 1. General index by economic destination of the goods. Adjusted for seasonal and calendar effects

	Index	Rate (%)		
		Monthly	Annual	Year-to-date average
<b>GENERAL INDEX</b>	<b>97.9</b>	<b>0.3</b>	<b>2.5</b>	<b>2.5</b>
1. Consumer goods	95.9	-1.0	-0.9	-0.9
1.1. Durable consumer goods	71.4	-1.4	3.3	3.3
1.2. Non-durable consumer goods	98.7	-0.7	-0.8	-0.8
2. Capital goods	102.0	0.9	-0.2	-0.2
3. Intermediate goods	96.8	-0.9	3.1	3.1
4. Energy	96.9	4.6	9.5	9.5

#### 2. General index by economic destination of the goods. Adjusted for calendar effects

	Index	Rate (%)	
		Annual	Year-to-date average
<b>GENERAL INDEX</b>	<b>93.9</b>	<b>2.5</b>	<b>2.5</b>
1. Consumer goods	90.9	-1.3	-1.3
1.1. Durable consumer goods	61.5	3.4	3.4
1.2. Non-durable consumer goods	94.4	-1.7	-1.7
2. Capital goods	92.5	-0.1	-0.1
3. Intermediate goods	93.5	3.2	3.2
4. Energy	100.3	9.8	9.8

#### 3. General index by economic destination of the goods. Original indices

	Index	Rate (%)		Repercussion Annual
		Annual	Year-to-date average	
<b>GENERAL INDEX</b>	<b>94.2</b>	<b>7.1</b>	<b>7.1</b>	
1. Consumer goods	91.3	4.4	4.4	1.220
1.1. Durable consumer goods	61.6	10.2	10.2	0.189
1.2. Non-durable consumer goods	94.7	4.0	4.0	1.030
2. Capital goods	92.9	5.6	5.6	1.180
3. Intermediate goods	93.8	7.9	7.9	2.529
4. Energy	100.4	11.1	11.1	2.167

#### 4. General index by branch of activity (CNAE 2009)

	Index	Rate (%)		Repercussion
		Annual	Year-to-date average	Annual
<b>GENERAL INDEX</b>	<b>94.2</b>	<b>7.1</b>	<b>7.1</b>	
<b>B. Mining and quarrying industries</b>	37.5	-5.7	-5.7	-0.029
Extraction of anthracite, coal and lignite	16.4	-23.7	-23.7	-0.015
National crude petroleum and natural gas	..	..	..	..
Extraction of metallic ores	..	..	..	..
Other mining and quarrying	43.4	-2.2	-2.2	-0.010
<b>C. Manufacturing industry</b>	93.8	6.3	6.3	5.170
Food Industry	103.4	6.9	6.9	0.922
Manufacture of beverages.	80.2	3.7	3.7	0.113
Tobacco industry.	45.2	-39.7	-39.7	-0.103
Textile industry	101.9	10.6	10.6	0.122
Manufacture of garments	84.0	-4.4	-4.4	-0.058
Leather and footwear industry	94.7	3.5	3.5	0.028
Manufacture of wood and of products of wood and cork, except furniture; basketm	83.6	13.0	13.0	0.162
Manufacture of paper and paper-products	101.5	2.6	2.6	0.080
Graphic arts and reproduction of recorded media	61.8	1.3	1.3	0.021
Manufacture of coke and refined petroleum products	119.4	10.7	10.7	0.231
Chemical Industry	102.0	3.9	3.9	0.260
Manufacture of pharmaceutical products	110.4	1.4	1.4	0.058
Rubber and plastic material transformation industry	105.3	5.7	5.7	0.277
Manufacture of other non-metallic ore products	69.4	5.6	5.6	0.219
Metallurgy; manufacture of iron, steel and ferro-alloy products	102.6	12.4	12.4	0.482
Manufacture of metal products, except machinery and equipment	86.8	9.8	9.8	0.769
Manufacture of computers, electronic and optical products	73.7	7.2	7.2	0.080
Manufacture of electrical material and equipment	80.8	8.5	8.5	0.232
Manufacture of machinery and equipment n.e.c.	88.0	-1.8	-1.8	-0.077
Manufacture of motor vehicles, trailers and semi-trailers	125.3	7.2	7.2	0.621
Manufacture of other transport equipment	70.0	10.1	10.1	0.200
Manufacture of furniture.	63.7	17.0	17.0	0.196
Other manufacturing industries	106.6	19.1	19.1	0.215
Repair and installation of machinery and equipment	82.5	5.8	5.8	0.120
<b>D. Supply of electrical energy, gas, steam and air conditioning</b>	105.9	13.8	13.8	2.098
<b>E. Water supply, activities, waste management and decontamination*</b>	64.7	-7.2	-7.2	-0.143

\* It only includes Water collection, treatment and supply

(..) Data not available due to statistical secrecy.

## 5. General Industrial Production Indices: national and by Autonomous Community

	Index	Rate (%)	
		Annual	Year-to-date average
<b>NACIONAL</b>	<b>94.2</b>	<b>7.1</b>	<b>7.1</b>
Andalucía	91.5	9.9	9.9
Aragón	91.4	7.3	7.3
Asturias, Principado de	96.6	12.2	12.2
Balears, Illes	89.1	13.3	13.3
Canarias	93.3	5.5	5.5
Cantabria	90.1	17.2	17.2
Castilla y León	97.1	4.9	4.9
Castilla-La Mancha	84.5	2.1	2.1
Cataluña	100.4	6.9	6.9
Comunitat Valenciana	102.5	6.0	6.0
Extremadura	78.1	23.7	23.7
Galicia	92.8	3.6	3.6
Madrid, Comunidad de	83.1	5.6	5.6
Murcia, Región de	88.6	14.8	14.8
Navarra, Comunidad Foral de	96.6	15.0	15.0
País Vasco	93.6	4.8	4.8
Rioja, La	87.9	5.9	5.9

More detailed information by Autonomous Community may be obtained at:

Andalucía	<a href="http://www.juntadeandalucia.es/institutodeestadisticaycartografia">www.juntadeandalucia.es/institutodeestadisticaycartografia</a>
Aragón	<a href="http://www.aragon.es/iaest/ipi">www.aragon.es/iaest/ipi</a>
Principado de Asturias	<a href="http://www.sadei.es">www.sadei.es</a>
Illes Balears	<a href="http://www.ibestat.caib.es">www.ibestat.caib.es</a>
Canarias	<a href="http://www.gobiernodecanarias.org/istac">www.gobiernodecanarias.org/istac</a>
Cantabria	<a href="http://www.icane.es">www.icane.es</a>
Castilla y León	<a href="http://www.jcyl.es/estadistica">www.jcyl.es/estadistica</a>
Castilla - La Mancha	<a href="http://www.jccm.es/estadistica">www.jccm.es/estadistica</a>
Cataluña	<a href="http://www.idescat.cat">www.idescat.cat</a>
Comunitat Valenciana	<a href="http://www.ive.es">www.ive.es</a>
Extremadura	<a href="http://estadistica.gobex.es">http://estadistica.gobex.es</a>
Galicia	<a href="http://www.ige.xunta.es">www.ige.xunta.es</a>
Comunidad de Madrid	<a href="http://www.madrid.org/iestadis">www.madrid.org/iestadis</a>
Región de Murcia	<a href="http://econet.carm.es">http://econet.carm.es</a>
La Rioja	<a href="http://www.larioja.org">www.larioja.org</a>

For further information see INEbase - [www.ine.es/en/](http://www.ine.es/en/)

All press releases at: [www.ine.es/en/prensa/prensa\\_en.htm](http://www.ine.es/en/prensa/prensa_en.htm)

**Press Office:** Telephone numbers: 91 583 93 63 / 94 08 – Fax: 91 583 90 87 - [gprensa@ine.es](mailto:gprensa@ine.es)

**Information Area:** Telephone number: 91 583 91 00 – Fax: 91 583 91 58 – [www.ine.es/infoine/?L=1](http://www.ine.es/infoine/?L=1)