

10 April 2013

Industrial Production Index (IPI). Base 2005
February 2013. *Provisional data*

The annual variation of the Industrial Production Index stands at –8.5% in February, as compared with –3.4% in January

The adjusted for calendar effect annual rate of the IPI stands at –6.5%, as compared with –4.9% in January

Annual performance of industrial production

The Industrial Production Index (IPI) experienced an annual variation of –8.5% in February, over five points lower than that registered in January.

All the industrial sectors presented negative annual rates. Those with a greater negative effect were:

- **Intermediate goods**, with a rate of –10.5% and an effect of –3.592, due to the decrease in the production of most of the activities in this sector. The activities that most influenced in this drop were the *Manufacture of other chemical products, Manufacture of articles of concrete, cement and plaster* and *Quarrying of stone, sand and clay*. Among those activities increasing their production, worth noting *Treatment and coating of metals; mechanical engineering by third parties*.

- **Non-durable consumer goods**, with a variation of –5.9% and an effect of –1.648. Production decreased in nearly all the activities in this sector. Among them, highlighting *Manufacture of vegetable and animal oils and fats, Printing and service activities related to printing* and *Manufacture of wearing apparel, except for fur apparel*. Among those activities increasing their production, worth noting *Manufacture of beverages*.

- **Capital goods**, with a variation of –7.9% and an effect of –1.456 in the general index. Production decreased in over half of the activities of this sector. The activities that most influenced in this drop were *Manufacture of metal elements for construction, Manufacture of components, pieces and accessories for motor vehicles* and *Aircraft and spacecraft construction and machinery thereof*. The activity that increased its production that had a greater positive influence was *Manufacture of metal forming machinery and machine tools*.

A more detailed analysis showed the activities that most affected the annual rate of the IPI in the month of February 2013.

Activities with the greatest negative effect on the annual rate of IPI

Activity (CNAE 2009 Group)	Annual rate(%)	Effect
Production, transport and distribution of electrical energy	-11.2	-1.148
Manufacture of other chemical products	-50.4	-1.082
Manufacture of metal elements for construction	-19.6	-0.442
Manufacture of vegetables and animal oils and fats	-36.6	-0.420

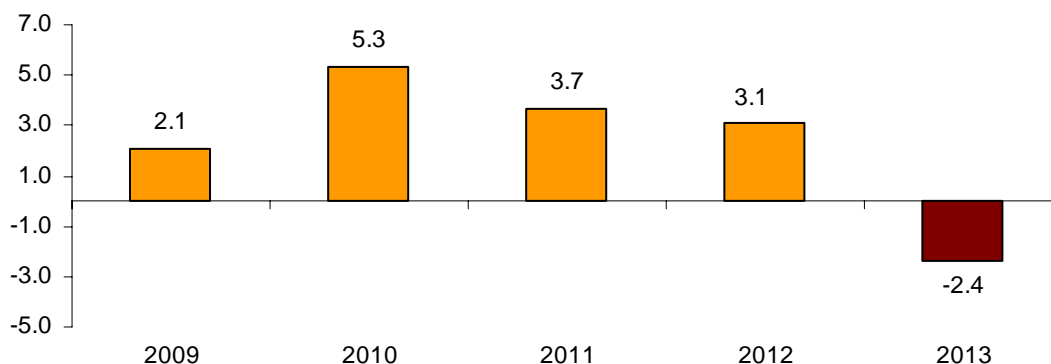
Activities with the greatest positive effect on the annual rate of IPI

Activity (CNAE 2009 Group)	Annual rate (%)	Effect
Manufacture of beverages	10.5	0.299
Treatment and coating of metals; mechanical engineering by third parties	11.0	0.219
Manufacture of metal forming machinery and machine tools	20.0	0.101
Petroleum refining	2.4	0.090

Monthly rate evolution¹

The variation rate of IPI in February as compared with January 2013 was -2.4%, the lowest registered in the last five years.

**Evolution of the monthly rate of IPI
(variation of February, as compared with January of the same year)**



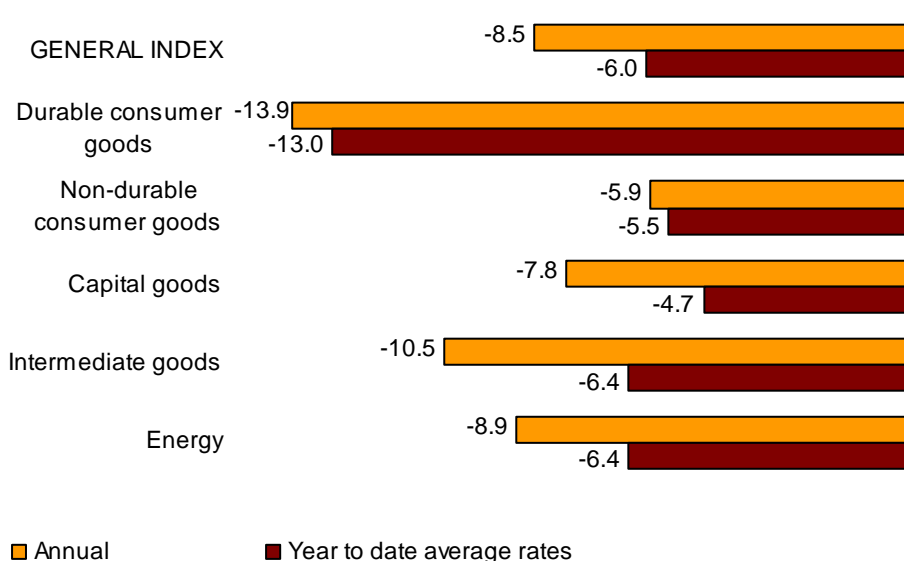
¹ In order to contribute to the analysis and interpretation of data, it has been added in this section the performance of the monthly IPI rate in January for the last years. The monthly rates of this type of series may have a seasonal behavior; therefore it is recommended to evaluate it in relation to the item of data for the same month in previous years.

Year to date average rates

The average of the Industrial Production Index registered a variation of **-6.0%**, in the first two months of 2013 as compared with the same month of the previous year.

By economic destination of the goods this rate was negative in all sectors.

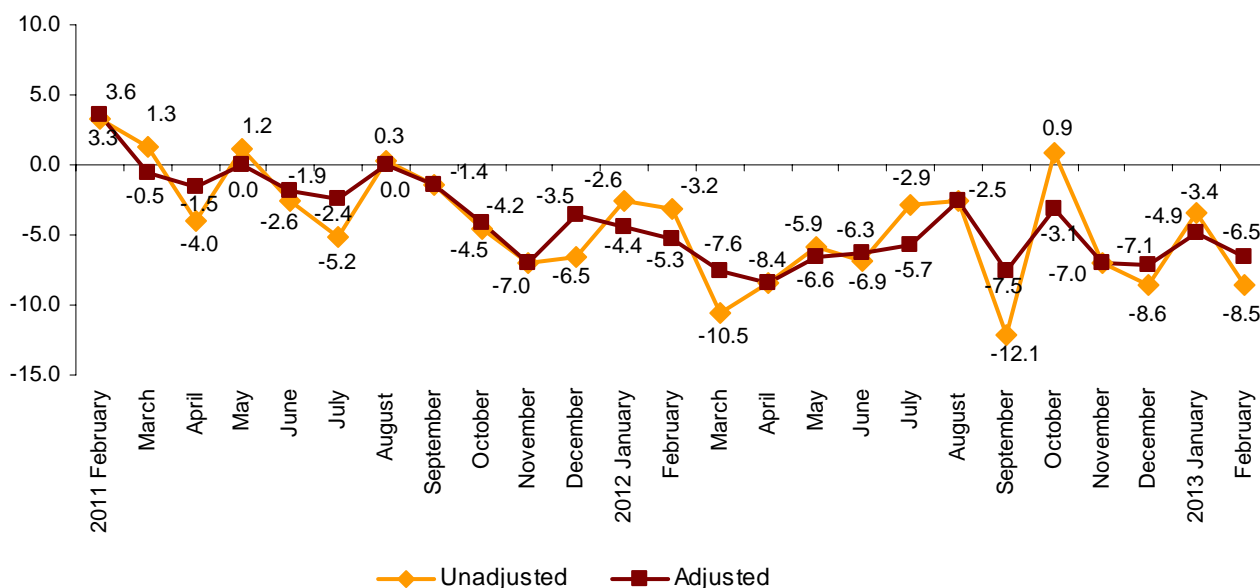
**Annual and average rates of the IPI
General index and by economic destination**



Evolution of the IPI, adjusted for the calendar effect

After correcting the calendar effect, that is, the difference between the number of working days in a given month in different years, the interannual variation of the IPI in the month of February was **-6.5%**, more than one and a half points higher than that registered in January.

**Annual evolution of IPI
General index, adjusted and unadjusted**

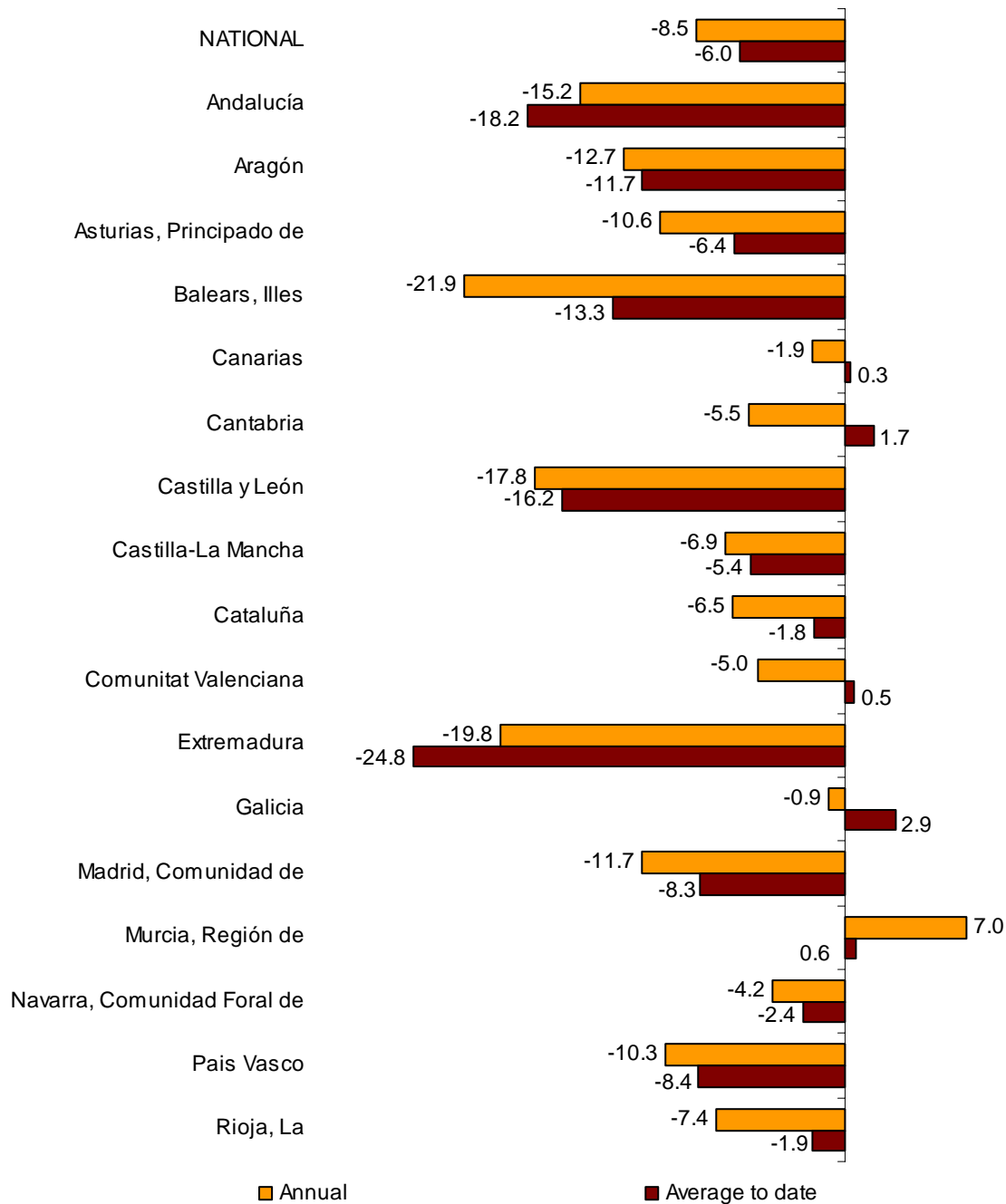


Results by Autonomous Community. Variation rates.

In February, the Autonomous Communities that registered the greatest increases in the annual rate of IPI were Illes Balears (-21.9%), Extremadura (-19.8%) and Castilla y León (-17.8%).

The only Autonomous Community that registered a positive annual rate was Región de Murcia (7.0%).

**Annual and average rates of IPI
General index by Autonomous Communities**



Industrial Production Index. Base 2005

February 2013

Provisional data

1. National indices by economic destination of the goods¹

	Index	% variation	
		Annual	Year-to-date average
GENERAL INDEX	73.9	-8.5	-6.0
Consumer goods	81.6	-6.5	-6.1
Durable consumer goods	44.0	-13.9	-13.0
Non-durable consumer goods	88.4	-5.9	-5.5
Capital goods	67.7	-7.8	-4.7
Intermediate goods	65.6	-10.5	-6.4
Energy	91.1	-8.9	-6.4

¹ Commission Regulation (EC) n° 656/2007

2. National indices adjusted for calendar effects

	Index	% variation	
		Annual	Year-to-date average
GENERAL INDEX	74.5	-6.5	-5.7
Consumer goods	81.8	-3.9	-5.8
Durable consumer goods	44.8	-10.2	-12.4
Non-durable consumer goods	88.5	-3.3	-5.2
Capital goods	68.5	-5.8	-4.3
Intermediate goods	66.4	-8.3	-5.9
Energy	91.5	-8.2	-6.3

3. Interannual rates. General index and by economic destination of the goods

Period	General index		Consumer goods		Durable consumer goods		Non-durable consumer goods	
	Original	Adjusted	Original	Adjusted	Original	Adjusted	Original	Adjusted
2012 February	-3.2	-5.3	-2.3	-5.0	-10.7	-14.4	-1.5	-4.0
March	-10.5	-7.6	-8.2	-4.6	-14.4	-9.4	-7.4	-3.9
April	-8.4	-8.4	-7.5	-7.5	-16.5	-16.7	-6.4	-6.4
May	-5.9	-6.6	-3.0	-3.7	-10.3	-11.4	-2.2	-2.9
June	-6.9	-6.3	-3.1	-2.3	-13.3	-12.2	-2.0	-1.2
July	-2.9	-5.7	-1.4	-4.9	-11.5	-16.3	-0.3	-3.7
August	-2.5	-2.5	-2.9	-2.8	1.2	1.2	-3.1	-3.2
September	-12.1	-7.5	-12.0	-6.1	-20.9	-12.8	-11.1	-5.5
October	0.9	-3.1	2.7	-2.4	0.7	-6.3	2.9	-2.0
November	-7.0	-7.0	-5.8	-5.8	-10.8	-10.8	-5.2	-5.2
December *	-8.6	-7.1	-13.0	-11.0	-17.3	-14.6	-12.7	-10.8
2013 January*	-3.4	-4.9	-5.7	-7.5	-12.1	-14.6	-5.2	-7.1
February	-8.5	-6.5	-6.5	-3.9	-13.9	-10.2	-5.9	-3.3

Period	Capital goods		Intermediate goods		Energy	
	Original	Adjusted	Original	Adjusted	Original	Adjusted
2012 February	-9.0	-11.1	-5.2	-7.3	7.9	7.2
March	-14.3	-11.4	-13.1	-10.2	-3.1	-2.2
April	-15.5	-15.4	-8.2	-8.4	-0.2	-0.2
May	-12.7	-13.3	-6.7	-7.3	0.3	0.1
June	-13.6	-13.0	-8.0	-7.4	-1.9	-1.7
July	-7.2	-10.0	-4.8	-7.8	4.9	4.0
August	-5.8	-5.9	-4.6	-4.7	4.2	4.2
September	-19.1	-14.4	-12.2	-7.2	-1.9	-0.3
October	-2.2	-6.2	-0.9	-5.2	5.7	4.3
November	-12.9	-12.8	-7.4	-7.3	-0.9	-0.9
December *	-6.0	-4.6	-10.6	-9.0	0.1	0.6
2013 January*	-1.2	-2.7	-2.0	-3.5	-4.0	-4.5
February	-7.8	-5.8	-10.5	-8.3	-8.9	-8.2

¹ Commission Regulation (EC) n° 656/2007 of 14 June 2007

* Data revised

4. General index and by branch of activity (CNAE 2009)

	Index	% variation	
		Annual	Year-to-date average
GENERAL INDEX	73.9	-8.5	-6.0
B. Mining and quarrying	39.4	-31.1	-25.7
Mining of coal and lignite	28.4	-62.8	-63.5
Other mining and quarrying	38.2	-25.8	-17.8
C. Manufacturing	72.6	-7.8	-5.4
Manufacture of food products	90.9	-5.9	-7.9
Manufacture of beverages	78.1	10.5	10.0
Manufacture of tobacco products	69.8	0.1	11.0
Manufacture of textiles	65.2	-2.0	2.1
Manufacture of wearing apparel	57	-15.4	-12.4
Leather and footwear industry	72.2	-12.7	-7.3
Wood and cork industry, except furniture, basketmaking and esparto	40.0	-18.4	-11.5
Paper industry	95.6	-5.1	-2.1
Printing and reproduction of recorded media	61.6	-18.2	-16.1
Manufacture of coke and refined petroleum products	90.2	2.5	2.1
Chemical industry	89.8	-16.9	-8.0
Manufacture of pharmaceutical products	143.0	-5.0	-3.5
Manufacture of rubber and plastic products	75.0	-6.6	-6.8
Manufacture of other non-metallic mineral products	37.5	-16.5	-13.3
Metallurgy; manufacture of iron, steel and ferro-alloy products	80.0	-5.0	-4.2
Manufacture of metal products, except machinery and equipment	59.7	-5.4	-2.5
Manufacture of computer, electronic and optical products	54.5	-10.4	-11.5
Manufacture of electrical equipment	68.4	-14.2	-10.8
Manufacture of machinery and equipment n.e.c.	76.1	-6.3	-5.7
Manufacture of motor vehicles, trailers and semi-trailers	76.1	-4.9	-1.4
Manufacture of other transport equipment	63.6	-16.1	-7.8
Manufacture of furniture	39.6	-14.8	-14.3
Other manufacturing	80.9	-7.1	-2.2
Repair and installation of machinery and equipment	89.8	-6.2	5.7
D. Electricity, gas, steam and air conditioning supply	93.7	-11.3	-8.0

5. General index by Autonomous Community

	Index	% variation	
		Annual	Year-to-date average
NATIONAL INDEX	73.9	-8.5	-6.0
Andalucía	61.6	-15.2	-18.2
Aragón	77.4	-12.7	-11.7
Asturias, Principado de	81.1	-10.6	-6.4
Balears, Illes	57.7	-21.9	-13.3
Canarias	71.9	-1.9	0.3
Cantabria	97.1	-5.5	1.7
Castilla y León	69.2	-17.8	-16.2
Castilla-La Mancha	71.2	-6.9	-5.4
Cataluña	80.3	-6.5	-1.8
Comunitat Valenciana	72.4	-5.0	0.5
Extremadura	69.4	-19.8	-24.8
Galicia	80.4	-0.9	2.9
Madrid, Comunidad de	74.4	-11.7	-8.3
Murcia, Región de	79.8	7.0	0.6
Navarra, Comunidad Foral de	79.3	-4.2	-2.4
País Vasco	76.3	-10.3	-8.4
Rioja, La	76.2	-7.4	-1.9

More detailed information by Autonomous Community can be obtained at:

Andalucía	www.juntadeandalucia.es/institutodeestadistica
Aragón	www.aragon.es/iaest/ipi
Principado de Asturias	www.sadei.es
Illes Balears	www.ibestat.caib.es
Canarias	www.gobiernodecanarias.org/istac
Cantabria	www.icane.es
Castilla y León	www.jcyl.es/estadistica
Castilla - La Mancha	www.jccm.es/estadistica
Cataluña	www.idescat.cat
Comunitat Valenciana	www.ive.es/indexipi.htm
Extremadura	http://estadistica.gobex.es
Galicia	www.ige.xunta.es
Comunidad de Madrid	www.madrid.org/iestadis
Región de Murcia	www.carm.es/econet