

Industrial Production Index (IPI). Base 2010
February 2014. *Provisional data*

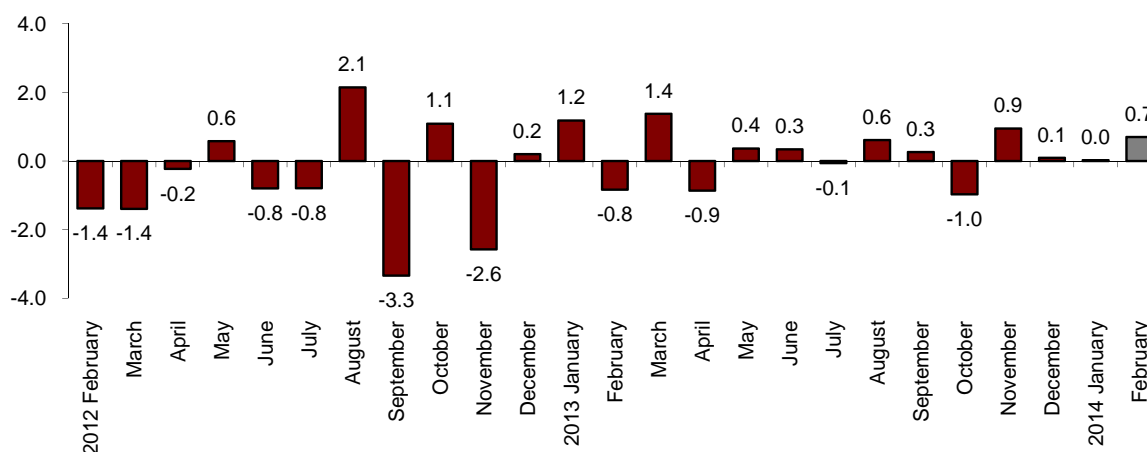
The monthly variation of the Industrial Production Index stands at 0.7%, after adjusting the seasonal and calendar effects

The annual rate of the Industrial Production Index stands at 2.8% in the series adjusted for the seasonal and calendar effects and at 3.1% in the original series

Monthly evolution of the Industrial Production

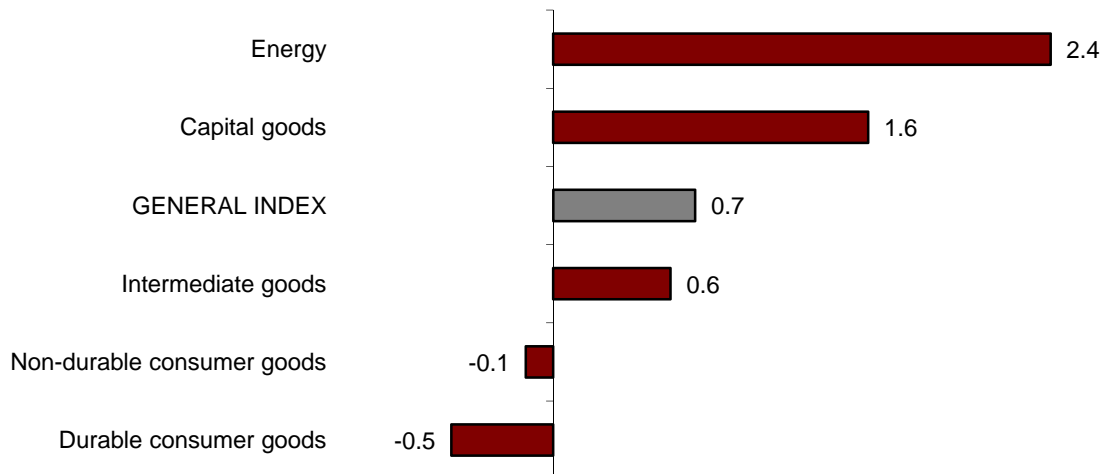
After adjusting the seasonal and calendar effects, the monthly variation of the Industrial Production Index (IPI) between February and January 2014 stood at 0.7%. This rate was seven tenths over that registered in January.

General Industrial Production Index
Adjusted for seasonal and calendar effects. Monthly rate



All the industrial sectors, except Durable consumer goods (−0.5%) and Non-durable consumer goods (−0.1%) registered positive monthly rates. Energy recorded the greatest monthly increase (2.4%).

Industrial Production Indices: General and by economic destination of the goods. Adjusted for seasonal and calendar effects. Monthly rate



A more detailed analysis showed the activities that registered the highest and lowest monthly rates in the month of February.

Activities with the highest annual rates of the Industrial Production Indices. Adjusted for seasonal and calendar effects.

Activity (Group from CNAE 2009)	Monthly rate(%)
Other manufacturing	10.3
Manufacture of coke and refined petroleum products	6.3
Manufacture of motor vehicles, trailers and semi-trailers	4.3

Activities with the lowest annual rates of the Industrial Production Indices. Adjusted for seasonal and calendar effects.

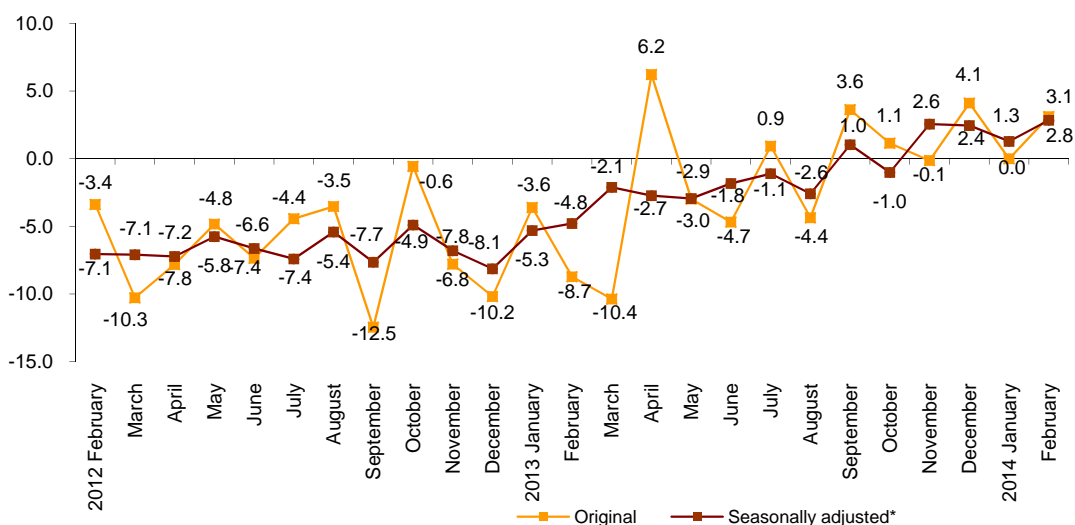
Activity (Group from CNAE 2009)	Monthly rate(%)
Mining of coal and lignite	-20.2
Manufacture of computer, electronic and optical products	-5.6
Manufacture of beverages	-4.0

Annual evolution of the Industrial Production

After adjusting the seasonal and calendar effects, the Industrial Production Index (IPI) registered a variation of 2.8% in February, as compared with the same month of the previous year. This rate was one point and a half over that registered in January.

The original series of the Industrial Production Indices recorded an annual variation of 3.1%. This rate was three points and one tenth over that of January.

**General Industrial Production Index
Annual rate**



After adjusting the seasonal and calendar effects, all industrial sectors registered positive annual rates, except Durable consumer goods and Energy.

Capital goods recorded the greatest positive rate (5.9%). In turn, Durable consumer goods registered the greatest decrease (-4.3%).

Annual rates of the Industrial Production Indices: General and by economic destination of the goods

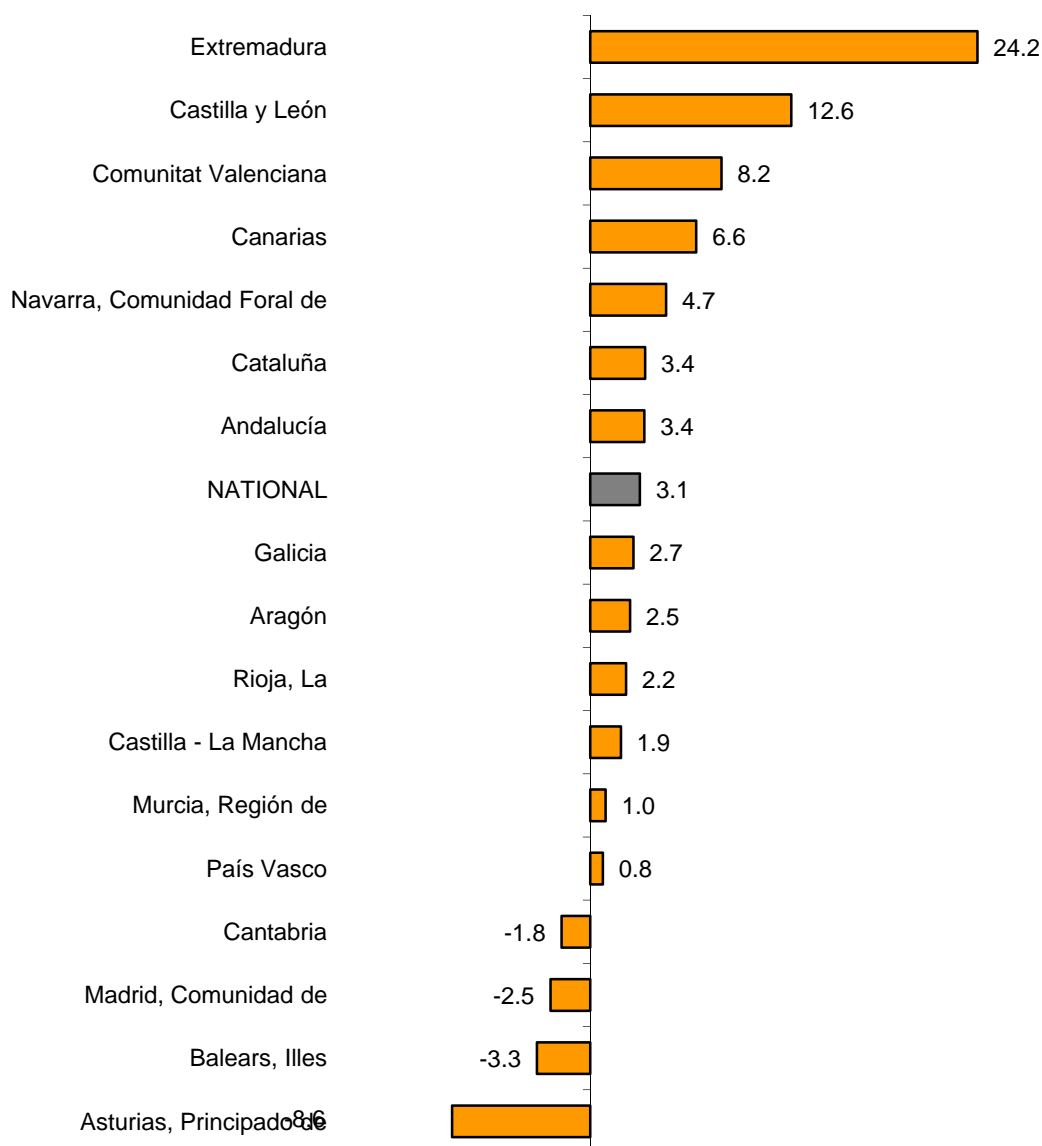
	Original index	Seasonally adjusted
	Annual rate (%)	index Annual rates (%)
GENERAL INDEX	3.1	2.8
1. Consumer goods	3.4	2.9
1.1. Durable consumer goods	-3.8	-4.3
1.2. Non-durable consumer goods	4.0	2.7
2. Capital goods	6.3	5.9
3. Intermediate goods	3.8	3.5
4. Energy	-1.7	-1.5

Results by Autonomous Community. Annual variation rates of the Industrial Production. Original series

The original series of the Industrial Production increased in 13 Autonomous Communities, as compared with February 2013. The greatest increases were registered in Extremadura (24.2%), Castilla y León (12.6%) and Comunitat Valenciana (8.2%).

In turn, Principado de Asturias (-8.6%), Illes Balears (-3.3%) and Comunidad de Madrid (-2.5%) recorded the greatest decreases.

**General indices: national and by Autonomous Community
Annual rate of the Industrial Production Index**



Industrial Production Indices. Base 2010 February 2014

Provisional data

07 April 2014

1. Industrial Production Indices: General index by economic destination of the goods. Adjusted for seasonal and calendar effects

	Index	Rate (%)		
		Monthly	Annual	Average for the year-to-date
GENERAL INDEX	92.0	0.7	2.8	2.1
1. Consumer goods	93.8	0.1	2.9	3.4
1.1. Durable consumer goods	66.5	-0.5	-4.3	-4.1
1.2. Non-durable consumer goods	96.5	-0.1	2.7	3.2
2. Capital goods	93.6	1.6	5.9	4.4
3. Intermediate goods	88.3	0.6	3.5	2.1
4. Energy	94.0	2.4	-1.5	-2.2

2. Industrial Production Indices: General index by economic destination of the goods. Adjusted for calendar effects

	Index	Rate (%)	
		Annual	Average for the year-to-date
GENERAL INDEX	91.2	3.1	2.2
1. Consumer goods	91.2	3.4	3.8
1.1. Durable consumer goods	64.7	-3.8	-3.7
1.2. Non-durable consumer goods	94.2	4.0	4.3
2. Capital goods	94.4	6.3	4.7
3. Intermediate goods	89.0	3.8	2.5
4. Energy	92.0	-1.7	-2.5

3. Industrial Production Indices: General index by economic destination of the goods. Original series

	Index	Rate (%)		Repercussion Annual
		Annual	Average for the year-to-date	
GENERAL INDEX	90.3	3.1	1.5	
1. Consumer goods	90.2	3.4	2.7	0.939
1.1. Durable consumer goods	63.9	-3.8	-4.6	-0.083
1.2. Non-durable consumer goods	93.3	4.0	3.3	1.022
2. Capital goods	93.2	6.3	3.8	1.316
3. Intermediate goods	88.1	3.8	1.7	1.195
4. Energy	90.8	-1.7	-2.7	-0.338

4. Industrial production Indices: General index by Industry General (CNAE 2009) Original series

	Index	Rate (%)		Repercussion
		Annual	Average for the year-to-date	Annual
GENERAL INDEX	90.3	3.1	1.5	
B. Mining and quarrying industries	49.5	-4.1	-3.1	-0.027
Extraction of anthracite, coal and lignite	41.9	-16.8	-0.4	-0.026
National crude petroleum and natural gas
Extraction of metallic ores
Other mining and quarrying	50.2	0.1	-3.8	0.001
C. Manufacturing industry	90.8	4.3	2.6	3.480
Food Industry	97.2	8.6	7.3	1.063
Manufacture of beverages.	82.9	4.7	8.8	0.148
Tobacco industry.	103.1	-7.7	-17.4	-0.030
Textile industry	88.1	-3.6	-4.0	-0.041
Manufacture of garments	90.9	-9.0	-9.6	-0.135
Leather and footwear industry	119.3	5.9	2.7	0.057
Manufacture of wood and of products of wood and cork, except furniture; basketmaking and wickerwork	75.3	3.9	1.9	0.048
Manufacture of paper and paper-products	96.4	0.6	-0.3	0.019
Graphic arts and reproduction of recorded media	67.6	-2.9	-4.9	-0.053
Manufacture of coke and refined petroleum products	100.0	1.5	-1.3	0.030
Chemical Industry	94.6	6.2	3.6	0.376
Manufacture of pharmaceutical products	100.6	-2.8	-2.8	-0.107
Rubber and plastic material transformation industry	96.3	4.3	3.7	0.194
Manufacture of other non-metallic ore products	67.7	-0.1	-0.8	-0.002
Metallurgy; manufacture of iron, steel and ferro-alloy products	98.8	7.9	8.2	0.309
Manufacture of metal products, except machinery and equipment	84.1	6.7	0.6	0.527
Manufacture of computers, electronic and optical products	69.4	4.5	8.3	0.049
Manufacture of electrical material and equipment	82.7	0.2	-0.3	0.005
Manufacture of machinery and equipment n.e.c.	97.0	-0.1	3.3	-0.005
Manufacture of motor vehicles, trailers and semi-trailers	115.9	9.3	5.7	0.728
Manufacture of other transport equipment	85.1	7.4	0.5	0.184
Manufacture of furniture.	61.8	-4.4	-4.6	-0.061
Other manufacturing industries	107.2	18.9	4.1	0.215
Repair and installation of machinery and equipment	72.8	-1.8	-3.2	-0.037
D. Supply of electrical energy, gas, steam and air conditioning	92.5	-2.3	-2.7	-0.351
E. Water supply, activities, waste management and decontamination*	79.7	0.4	-3.7	0.009

* It only includes Water collection, treatment and supply

(..) Data not available due to statistical secrecy.

5. General Industrial Production Indices: National and by Autonomous Community. Original Series

	Index	Rate%	
		Annual	Average for the year-to date
NATIONAL	90.3	3.1	1.5
Andalucía	83.1	3.4	5.3
Aragón	91.6	2.5	3.8
Asturias, Principado de	80.0	-8.6	-6.6
Balears, Illes	78.1	-3.3	-2.2
Canarias	90.4	6.6	2.2
Cantabria	92.8	-1.8	-3.2
Castilla y León	93.7	12.6	11.4
Castilla-La Mancha	83.1	1.9	1.5
Cataluña	97.2	3.4	1.2
Comunitat Valenciana	95.6	8.2	2.6
Extremadura	82.8	24.2	12.1
Galicia	90.6	2.7	0.1
Madrid, Comunidad de	81.2	-2.5	-2.5
Murcia, Región de	82.1	1.0	-0.7
Navarra, Comunidad Foral de	94.5	4.7	4.6
País Vasco	90.6	0.8	-1.8
Rioja, La	91.2	2.2	-0.5

More detailed information by Autonomous Community may be obtained at:

Andalucía	www.juntadeandalucia.es/institutodeestadistica
Aragón	www.aragon.es/iaest/ipi
Principado de Asturias	www.sadei.es
Illes Balears	www.ibestat.caib.es
Canarias	www.gobiernodecanarias.org/istac
Cantabria	www.icane.es
Castilla y León	www.jcyl.es/estadistica
Castilla - La Mancha	www.jccm.es/estadistica
Cataluña	www.idescat.cat
Comunitat Valenciana	www.ive.es
Extremadura	http://estadistica.gobex.es
Galicia	www.ige.xunta.es
Comunidad de Madrid	www.madrid.org/iestadis
Región de Murcia	www.carm.es/econet
La Rioja	www.larioja.org

For further information see **INEbase** - www.ine.es/en/ All press releases at: www.ine.es/en/prensa/prensa_en.

Press Office: Telephone numbers: 91 583 93 63 / 94 08 – Fax: 91 583 90 87 - gprensa@ine.es

Information Area: Telephone number: 91 583 91 00 – Fax: 91 583 91 58 – www.ine.es/infoine/?L=1