

09 May 2018

Industrial Price Index. Base 2015
March 2018. *Provisional data*

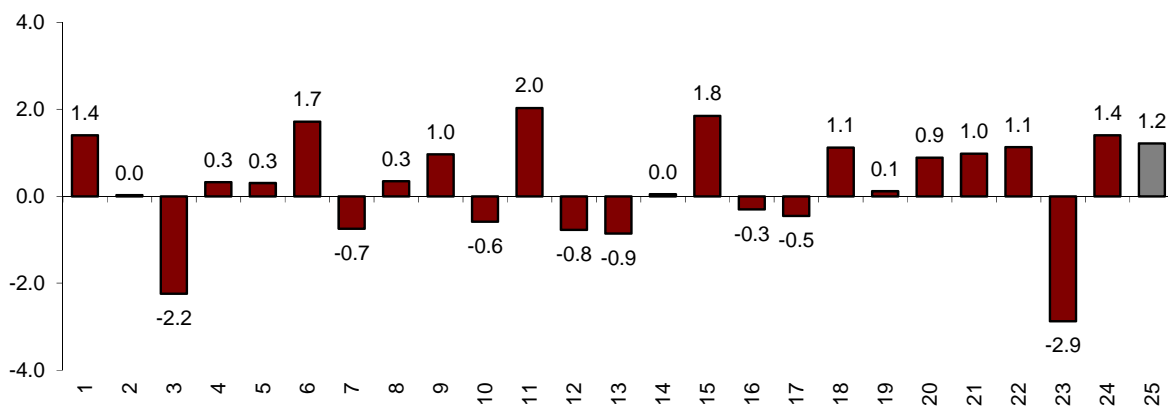
The monthly variation of the Industrial Production Index stands at 1.2%, after adjusting for seasonal and calendar effects

The annual rate of the Industrial Production Index stands at 5.1% in the series adjusted for seasonal and calendar effects and at -3.6% in the original series

Monthly evolution of industrial production

After adjusting for seasonal and calendar effects, the monthly variation of the Industrial Production Index (IPI) between March and February stood at 1.2%. This rate is 0.2 points lower than that observed in February.

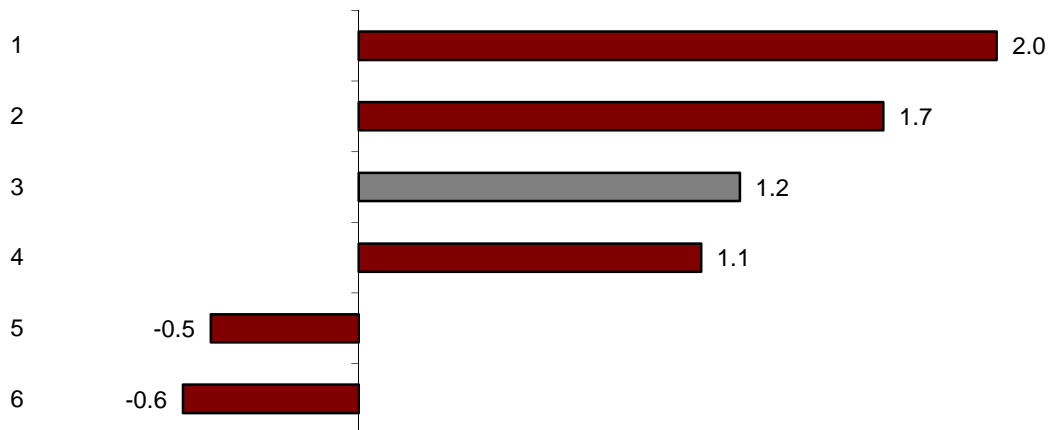
General Industrial Production Index
Adjusted for seasonal and calendar effects. Monthly rate



By sector, *Capital goods* (2.0%) and *Non-durable consumer goods* (1.7%) registered the highest positive monthly rates.

In turn, *Durable consumer goods* (-0.6%) and *Intermediate goods* (-0.5%) registered negative monthly rates.

Industrial Production Indices: General and by economic destination of the goods. Adjusted for seasonal and calendar effects. Monthly rate



A more detailed analysis shows the branches of activity with the greatest and lowest monthly rates in the month of March.

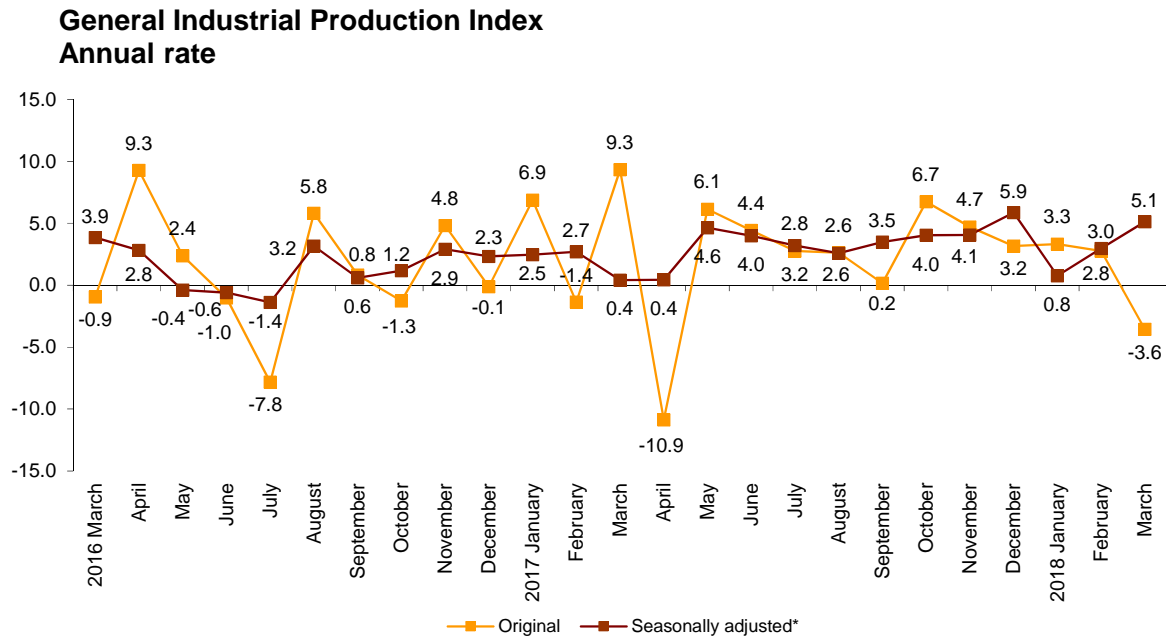
Activities with the highest annual rates of the Industrial Production Indices adjuted for seasonal and calendar effects	
Activity (Division from CNAE 2009)	Monthly rate (%)
Manufacture of pharmaceutical products	16.5
Tobacco industry	10.9
Manufacture of other transport equipment	5.2
Activities with the lowest annual rates of the Industrial Production Indices adjuted for seasonal and calendar effects	
Activity (Division from CNAE 2009)	Monthly rate (%)
Extraction of anthracite, coal and lignite	-7.4
Manufacture of garments	-3.0
Manufacture of metal products, except machinery and equipment	-2.4

Annual evolution of industrial production

After adjusting for seasonal and calendar effects, the Industrial Production Index registered a

variation of 5.1% in March, as compared with the same month of the previous year. This rate is 2.1 points higher than that observed in February.

The original series of the IPI experienced an annual variation of -3.6%. This rate is 6.4 point lower than that of February.



For the indices adjusted for seasonal and calendar effects, all sectors presented positive annual rates. *Energy* (9.7%), *Capital goods* (4.9%) and *Intermediate goods* (3.3%) recorded the largest increases.

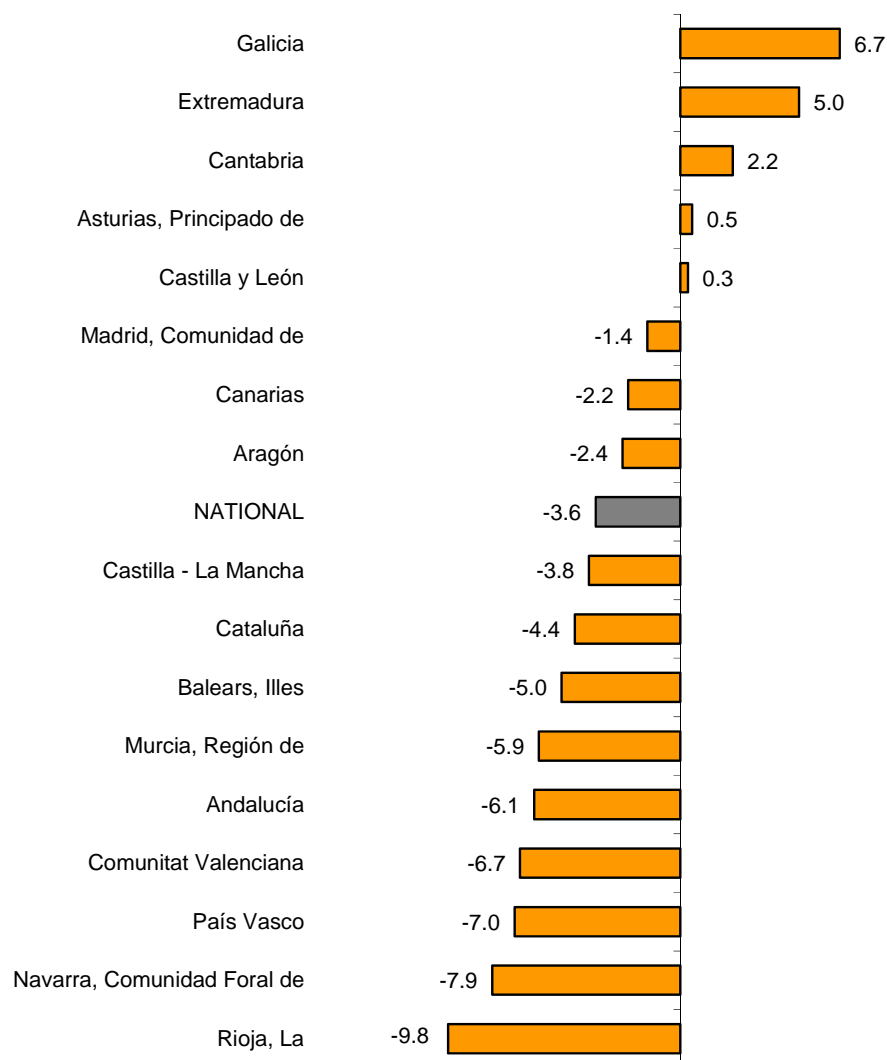
Annual rates of the Industrial Production Indices: General and by economic destination of the goods		
	Original index	Seasonally adjusted index
	Annual rate(%)	Annual rate (%)
GENERAL INDEX	-3.6	5.1
1. Consumer goods	-6.1	3.4
1.1. Durable consumer goods	-12.5	0.0
1.2. Non-durable consumer goods	-5.5	2.3
2. Capital goods	-6.3	4.9
3. Intermediate goods	-6.0	3.3
4. Energy	7.7	9.7

Results by Autonomous Communities. Annual variation rates of industrial production. Original series

The annual rate of industrial production in March was positive in five Autonomous Communities. The greatest increases were recorded in Galicia (6.7%), Extremadura (5.0%) and Cantabria (2.2%).

In turn, the Autonomous Communities showing the most negative annual rates were La Rioja (-9.8%), Comunidad Foral de Navarra (-7.9%) and País Vasco (-7.0%).

General indices: national and by Autonomous Community Annual rate of the Industrial Production Index



For further information see **INEbase**: www.ine.es/en/ Twitter: [@es_ine](https://twitter.com/es_ine)

All press releases at: www.ine.es/en/prensa/prensa_en.htm

Press office: Telephone numbers: (+34) 91 583 93 63 /94 08 – gprensa@ine.es

Information Area: Telephone number: (+34) 91 583 91 00 – www.ine.es/infoine/?L=1

Industrial Production Indices. Base 2015

March 2018

Provisional data

1. General index by economic destination of the goods. Adjusted for seasonal and calendar effects

	Index	Rate (%)		
		Monthly	Annual	Year-to-date average
GENERAL INDEX	108.2	1.2	5.1	2.9
1. Consumer goods	105.7	2.6	3.4	1.7
1.1. Durable consumer goods	108.5	-0.6	0.0	2.0
1.2. Non-durable consumer goods	104.5	1.7	2.3	1.7
2. Capital goods	111.9	2.0	4.9	3.7
3. Intermediate goods	109.4	-0.5	3.3	3.9
4. Energy	105.4	1.1	9.7	2.1

2. General index by economic destination of the goods. Adjusted for calendar effects

	Index	Rate (%)	
		Annual	Year-to-date average
GENERAL INDEX	115.2	5.4	2.8
1. Consumer goods	112.1	4.2	1.6
1.1. Durable consumer goods	117.4	0.1	1.7
1.2. Non-durable consumer goods	111.4	3.7	1.4
2. Capital goods	123.3	5.0	3.5
3. Intermediate goods	117.1	2.9	3.7
4. Energy	106.2	9.9	1.9

3. General index by economic destination of the goods. Original indices

	Index	Rate (%)		Repercussion
		Annual	Year-to-date average	Annual
GENERAL INDEX	110.6	-3.6	0.7	
1. Consumer goods	107.2	-6.1	-0.8	-1.587
1.1. Durable consumer goods	110.5	-12.5	-1.8	-0.278
1.2. Non-durable consumer goods	107.0	-5.5	-0.7	-1.309
2. Capital goods	117.1	-6.3	0.5	-1.513
3. Intermediate goods	112.6	-6.0	1.4	-1.877
4. Energy	105.4	7.7	1.5	1.423

4. General index by branch of activity (CNAE 2009)

	Index	Rate (%)		Repercussion
		Annual	Year-to-date average	Annual
GENERAL INDEX	110.6	-3.6	0.7	
B. Mining and quarrying industries	96.3	0.7	10.2	0.004
Extraction of anthracite, coal and lignite
National crude petroleum and natural gas
Extraction of metallic ores
Other mining and quarrying	92.2	-5.4	3.6	-0.026
C. Manufacturing industry	112.1	-6.0	0.5	-4.964
Food Industry	100.0	-6.1	-1.1	-0.677
Manufacture of beverages.	92.1	-7.3	-2.1	-0.207
Tobacco industry.
Textile industry	117.3	-5.0	2.0	-0.059
Manufacture of garments	118.8	-19.3	-4.5	-0.229
Leather and footwear industry	105.7	-12.4	-3.5	-0.123
Manufacture of wood and of products of wood and cork, except furniture; basketm	120.8	1.7	8.0	0.022
Manufacture of paper and paper-products	101.1	-7.9	-1.0	-0.185
Graphic arts and reproduction of recorded media	106.2	0.5	0.7	0.008
Manufacture of coke and refined petroleum products	108.4	0.9	5.8	0.020
Chemical Industry	109.8	-5.2	1.4	-0.325
Manufacture of pharmaceutical products	144.2	2.4	2.8	0.108
Rubber and plastic material transformation industry	115.6	-7.9	0.6	-0.390
Manufacture of other non-metallic ore products	108.0	-8.3	0.3	-0.317
Metallurgy; manufacture of iron, steel and ferro-alloy products	114.8	-5.1	0.7	-0.183
Manufacture of metal products, except machinery and equipment	112.0	-9.8	0.0	-0.836
Manufacture of computers, electronic and optical products	105.3	-0.8	0.6	-0.008
Manufacture of electrical material and equipment	110.1	-7.5	-0.6	-0.220
Manufacture of machinery and equipment n.e.c.	123.5	-1.0	7.4	-0.049
Manufacture of motor vehicles, trailers and semi-trailers	117.4	-8.9	-3.3	-0.819
Manufacture of other transport equipment	122.4	-8.4	-1.7	-0.267
Manufacture of furniture.	115.7	-11.4	-2.4	-0.165
Other manufacturing industries	109.1	-6.3	2.0	-0.070
Repair and installation of machinery and equipment	120.3	0.9	8.2	0.027
D. Supply of electrical energy, gas, steam and air conditioning	108.4	13.2	2.2	1.821
E. Water supply, activities, waste management and decontamination*	86.2	-16.2	-6.5	-0.416

* It only includes Water collection, treatment and supply

(..) Data not available due to statistical secrecy.

5. General Industrial Production Indices: national and by Autonomous Community

	Index	Rate (%)	
		Annual	Year-to-date average
NACIONAL	110.6	-3.6	0.7
Andalucía	98.8	-6.1	-0.2
Aragón	110.5	-2.4	0.1
Asturias, Principado de	107.1	0.5	3.8
Balears, Illes	95.8	-5.0	-3.8
Canarias	100.7	-2.2	-1.6
Cantabria	124.5	2.2	9.8
Castilla y León	110.1	0.3	-1.3
Castilla-La Mancha	104.5	-3.8	-0.5
Cataluña	113.8	-4.4	1.8
Comunitat Valenciana	108.9	-6.7	-1.8
Extremadura	109.2	5.0	5.7
Galicia	115.4	6.7	8.4
Madrid, Comunidad de	118.5	-1.4	-1.2
Murcia, Región de	103.8	-5.9	1.2
Navarra, Comunidad Foral de	108.8	-7.9	-2.6
País Vasco	112.0	-7.0	0.4
Rioja, La	99.1	-9.8	-1.8

More detailed information by Autonomous Community may be obtained at:

Andalucía	www.juntadeandalucia.es/institutodeestadisticaycartografia
Aragón	www.aragon.es/iaest/ipi
Principado de Asturias	www.sadei.es
Illes Balears	www.ibestat.caib.es
Canarias	www.gobiernodecanarias.org/istac
Cantabria	www.icane.es
Castilla y León	www.jcyl.es/estadistica
Castilla - La Mancha	www.jccm.es/estadistica
Cataluña	www.idescat.cat
Comunitat Valenciana	www.ive.es
Extremadura	http://estadistica.gobex.es
Galicia	www.ige.xunta.es
Comunidad de Madrid	www.madrid.org/iestadis
Región de Murcia	http://econet.carm.es
La Rioja	www.larioja.org