

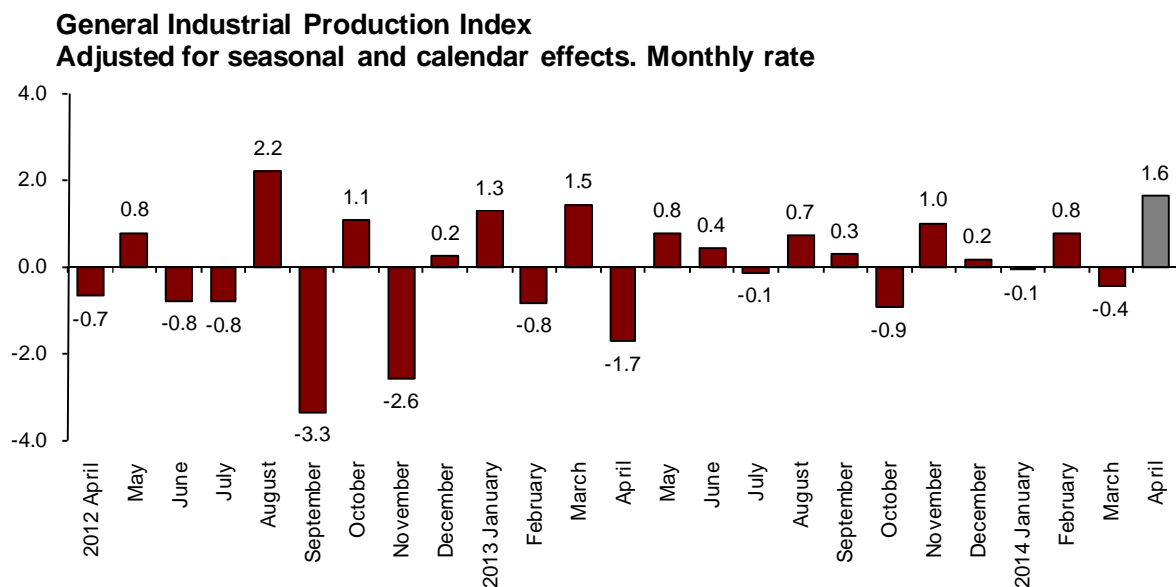
Industrial Production Index (IPI). Base 2010
April 2014. *Provisional data*

The monthly variation of the Industrial Production Index stands at 1.6%, after adjusting the seasonal and calendar effects

The annual rate of the Industrial Production Index stands at 4.3% in the series adjusted for the seasonal and calendar effects and at -1.9% in the original series

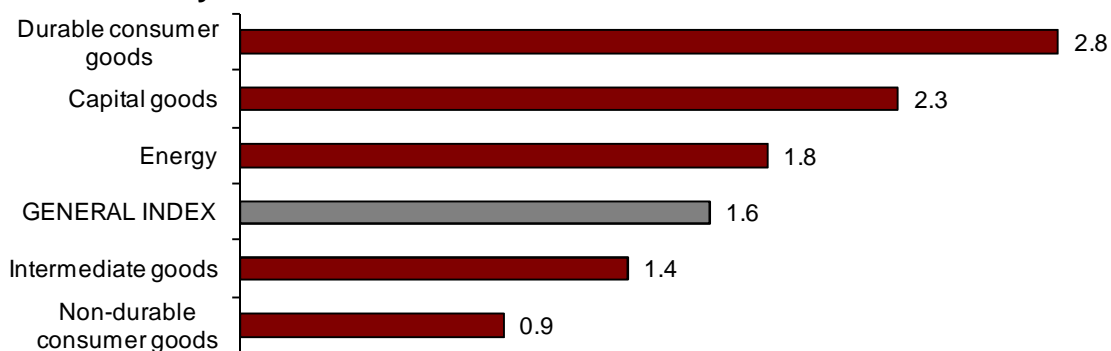
Monthly evolution of the Industrial Production

After adjusting the seasonal and calendar effects, the monthly variation of the Industrial Production Index (IPI) between April and March 2014 stood at 1.6%. This rate was 2 points over that registered in March.



All the industrial sectors registered positive monthly rates. Durable consumer goods recorded the greatest monthly increase (2.8%) and Non-durable consumer goods recorded the lowest increase (0.9%).

Industrial Production Indices: General and by economic destination of the goods. Adjusted for seasonal and calendar effects. Monthly rate



A more detailed analysis showed the activities that registered the highest and lowest monthly rates in the month of April.

Activities with the highest annual rates of the Industrial Production Indices adjusted for seasonal and calendar effects

Activity (Division from CNAE 2009)	Monthly rate (%)
Manufacture of beverages	6.5
Manufacture of machinery and equipment n.e.c.	6.0
Manufacture of wood and of products of wood and cork, except furniture; basketmaking	5.3

Activities with the lowest annual rates of the Industrial Production Indices adjusted for seasonal and calendar effects

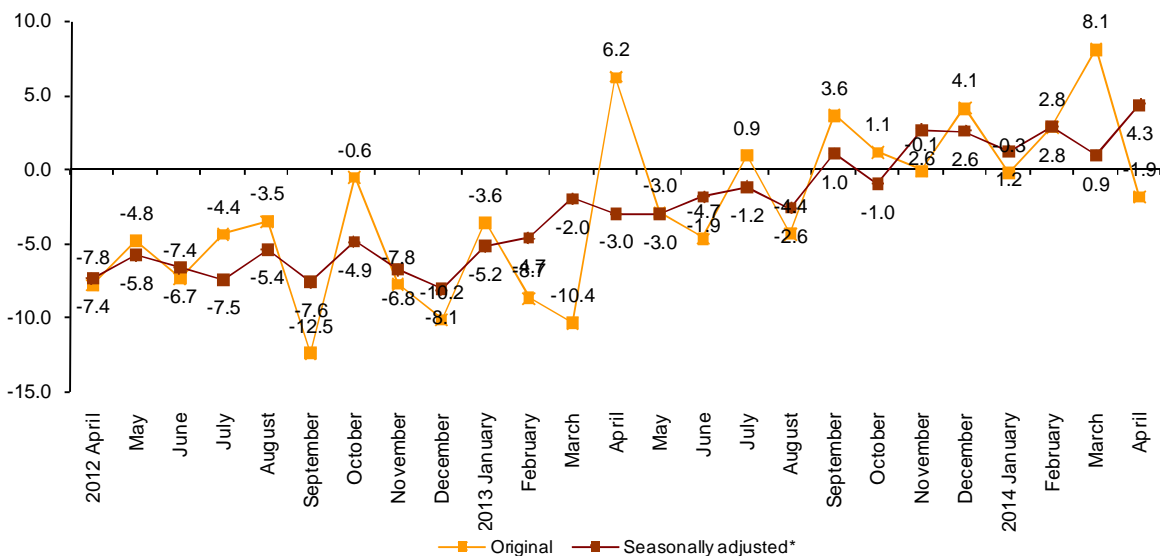
Activity (Division from CNAE 2009)	Monthly rate (%)
Extraction of anthracite, coal and lignite	-11.2
Manufacture of other transport equipment	-4.5
Manufacture of pharmaceutical products	-3.1

Annual evolution of the Industrial Production

After adjusting the seasonal and calendar effects, the Industrial Production Index (IPI) registered a variation of 4.3% in April, as compared with the same month of the previous year. This rate was 3.4 points over that registered in March.

The original series of the Industrial Production Index recorded an annual variation of -1.9%. This rate was 10 points lower than that of March.

**General Industrial Production Index
Annual rate**



After adjusting the seasonal and calendar effects, all industrial sectors registered positive annual rates, except Energy (-0.3%).

Capital goods recorded the greatest positive rate (9.0%).

**Annual rates of the Industrial Production Indices:
General and by economic destination of the goods**

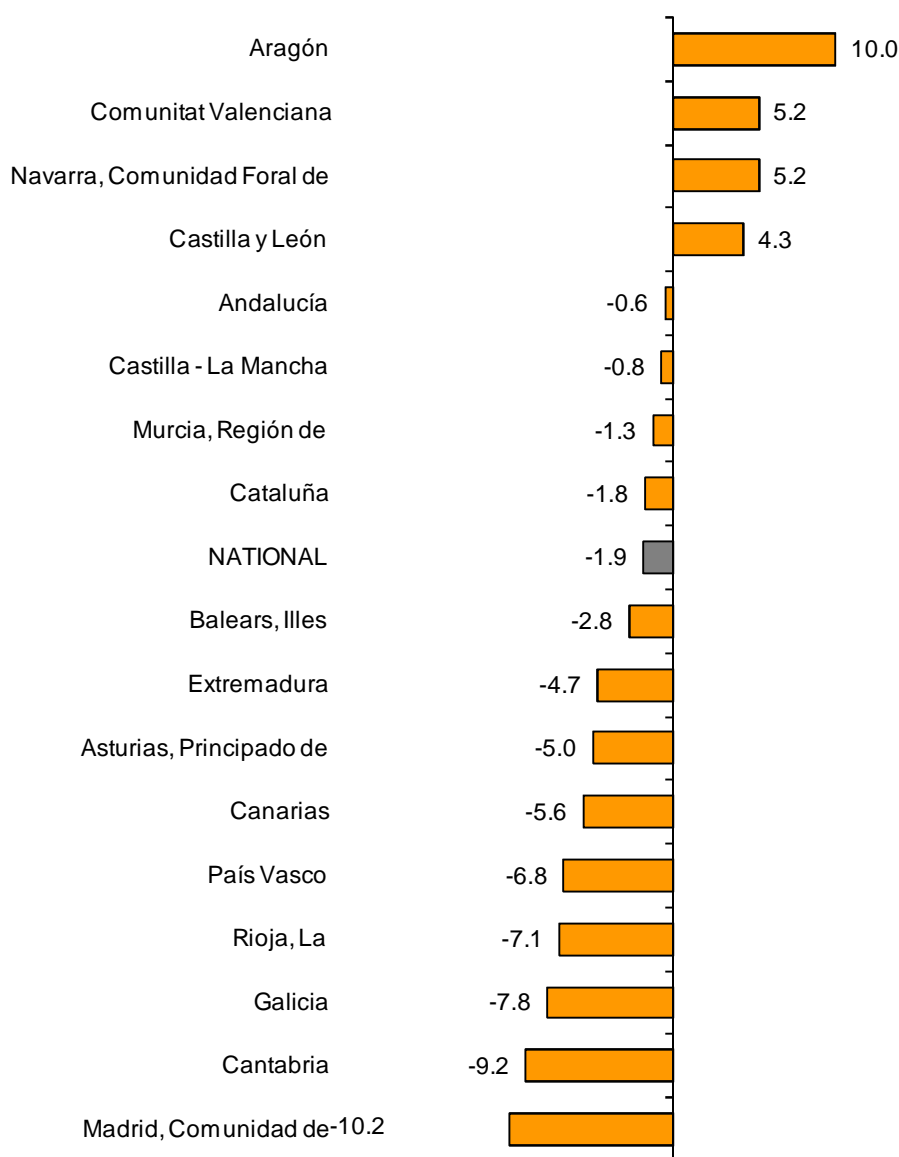
	Original index	Seasonally adjusted index
	Annual rate(%)	Annual rate (%)
GENERAL INDEX	-1.9	4.3
1. Consumer goods	-3.8	3.8
1.1. Durable consumer goods	-4.5	4.1
1.2. Non-durable consumer goods	-3.7	2.7
2. Capital goods	0.9	9.0
3. Intermediate goods	-1.8	4.8
4. Energy	-2.4	-0.3

Results by Autonomous Community. Annual variation rates of the Industrial Production. Original series

The annual rates of the original series of the Industrial Production decreased in 13 Autonomous Communities. The greatest decreases were registered in Comunidad de Madrid (-10.2%), Cantabria (-9.2%) and Galicia (-7.8%).

In turn, the greatest increases were registered in Aragón (10.0%) and in Comunitat Valenciana and Comunidad Foral de Navarra (both registering a 5.2% increase).

**General indices: national and by Autonomous Community
Annual rate of the Industrial Production Index**



Industrial Production Indices. Base 2010

April 2014

Provisional data

1. General index by economic destination of the goods. Adjusted for seasonal and calendar effects

	Index	Rate (%)		
		Monthly	Annual	Year-to-date average
GENERAL INDEX	93.3	1.6	4.3	2.3
1. Consumer goods	94.4	1.8	3.8	2.3
1.1. Durable consumer goods	68.9	2.8	4.1	-2.0
1.2. Non-durable consumer goods	96.6	0.9	2.7	2.2
2. Capital goods	96.3	2.3	9.0	5.4
3. Intermediate goods	89.4	1.4	4.8	2.9
4. Energy	94.6	1.8	-0.3	-1.9

2. General index by economic destination of the goods. Adjusted for calendar effects

	Index	Rate (%)	
		Annual	Year-to-date average
GENERAL INDEX	90.8	4.8	2.3
1. Consumer goods	90.6	4.5	2.5
1.1. Durable consumer goods	66.2	5.0	-1.7
1.2. Non-durable consumer goods	93.6	4.0	2.8
2. Capital goods	94.3	9.5	5.5
3. Intermediate goods	90.1	5.2	3.0
4. Energy	88.4	-0.2	-2.1

3. General index by economic destination of the goods. Original indices

	Index	Rate (%)		Repercussion Annual
		Annual	Year-to-date average	
GENERAL INDEX	90.0	-1.9	2.1	
1. Consumer goods	89.8	-3.8	2.2	-1.064
1.1. Durable consumer goods	65.4	-4.5	-1.9	-0.098
1.2. Non-durable consumer goods	92.6	-3.7	2.5	-0.965
2. Capital goods	93.3	0.9	5.3	0.186
3. Intermediate goods	89.2	-1.8	2.8	-0.569
4. Energy	88.2	-2.4	-2.2	-0.449

4. General index by branch of activity (CNAE 2009)

	Index	Rate (%)		Repercussion
		Annual	Year-to-date average	Annual
GENERAL INDEX	90.0	-1.9	2.1	
B. Mining and quarrying industries	50.5	-4.3	2.2	-0.028
Extraction of anthracite, coal and lignite	35.7	16.4	17.4	0.014
National crude petroleum and natural gas
Extraction of metallic ores
Other mining and quarrying	53.0	-7.8	-0.9	-0.042
C. Manufacturing industry	91.3	-1.7	3.2	-1.430
Food Industry	94.9	-1.4	6.0	-0.181
Manufacture of beverages.	97.1	3.3	1.7	0.119
Tobacco industry.	90.2	-12.9	-12.2	-0.044
Textile industry	99.4	-0.6	-0.3	-0.007
Manufacture of garments	87.8	-0.8	-4.3	-0.010
Leather and footwear industry	86.6	-5.8	3.4	-0.044
Manufacture of wood and of products of wood and cork, except furniture; basketm	84.8	-0.1	3.7	-0.002
Manufacture of paper and paper-products	102.4	0.2	0.8	0.005
Graphic arts and reproduction of recorded media	73.2	-12.3	-4.6	-0.255
Manufacture of coke and refined petroleum products	108.9	-1.2	0.8	-0.026
Chemical Industry	97.8	-1.1	3.8	-0.070
Manufacture of pharmaceutical products	94.5	-13.2	-1.9	-0.511
Rubber and plastic material transformation industry	97.6	1.1	5.4	0.050
Manufacture of other non-metallic ore products	71.3	-1.3	2.4	-0.051
Metallurgy; manufacture of iron, steel and ferro-alloy products	98.5	-2.7	4.9	-0.112
Manufacture of metal products, except machinery and equipment	85.3	1.3	3.8	0.105
Manufacture of computers, electronic and optical products	68.7	4.2	11.9	0.043
Manufacture of electrical material and equipment	78.0	-4.2	1.2	-0.120
Manufacture of machinery and equipment n.e.c.	101.8	-5.4	-0.4	-0.268
Manufacture of motor vehicles, trailers and semi-trailers	110.1	8.3	10.2	0.595
Manufacture of other transport equipment	74.0	-14.9	0.0	-0.388
Manufacture of furniture.	65.7	-6.3	-3.2	-0.091
Other manufacturing industries	104.1	-6.1	4.2	-0.081
Repair and installation of machinery and equipment	77.0	-4.2	-1.5	-0.086
D. Supply of electrical energy, gas, steam and air conditioning	85.1	-3.5	-3.4	-0.485
E. Water supply, activities, waste management and decontamination*	96.1	1.9	2.3	0.048

* It only includes Water collection, treatment and supply

(..) Data not available due to statistical secrecy.

5. General Industrial Production Indices: national and by Autonomous Community

	Index	Rate (%)	
		Annual	Year-to-date average
NACIONAL	90.0	-1.9	2.1
Andalucía	82.9	-0.6	5.1
Aragón	98.3	10.0	7.8
Asturias, Principado de	85.1	-5.0	-4.8
Balears, Illes	81.7	-2.8	0.1
Canarias	87.0	-5.6	-1.9
Cantabria	95.4	-9.2	-3.5
Castilla y León	92.0	4.3	10.5
Castilla-La Mancha	86.7	-0.8	1.2
Cataluña	96.0	-1.8	2.0
Comunitat Valenciana	98.1	5.2	5.0
Extremadura	80.8	-4.7	6.7
Galicia	87.6	-7.8	-2.1
Madrid, Comunidad de	79.7	-10.2	-2.3
Murcia, Región de	86.9	-1.3	1.0
Navarra, Comunidad Foral de	96.4	5.2	6.3
País Vasco	85.3	-6.8	-0.9
Rioja, La	89.4	-7.1	0.7

More detailed information by Autonomous Community may be obtained at:

Andalucía	www.juntadeandalucia.es/institutodeestadisticaycartografia
Aragón	www.aragon.es/iaest/ipi
Principado de Asturias	www.sadei.es
Illes Balears	www.ibestat.caib.es
Canarias	www.gobiernodecanarias.org/istac
Cantabria	www.icane.es
Castilla y León	www.jcyl.es/estadistica
Castilla - La Mancha	www.jccm.es/estadistica
Cataluña	www.idescat.cat
Comunitat Valenciana	www.ive.es
Extremadura	http://estadistica.gobex.es
Galicia	www.ige.xunta.es
Comunidad de Madrid	www.madrid.org/iestadis
Región de Murcia	www.carm.es/econet
La Rioja	www.larioja.org

For further information see INEbase - www.ine.es/en/

All press releases at: www.ine.es/en/prensa/prensa_en.htm

Press Office: Telephone numbers: 91 583 93 63 / 94 08 – Fax: 91 583 90 87 - gprensa@ine.es

Information Area: Telephone number: 91 583 91 00 – Fax: 91 583 91 58 – www.ine.es/infoine/?L=1