

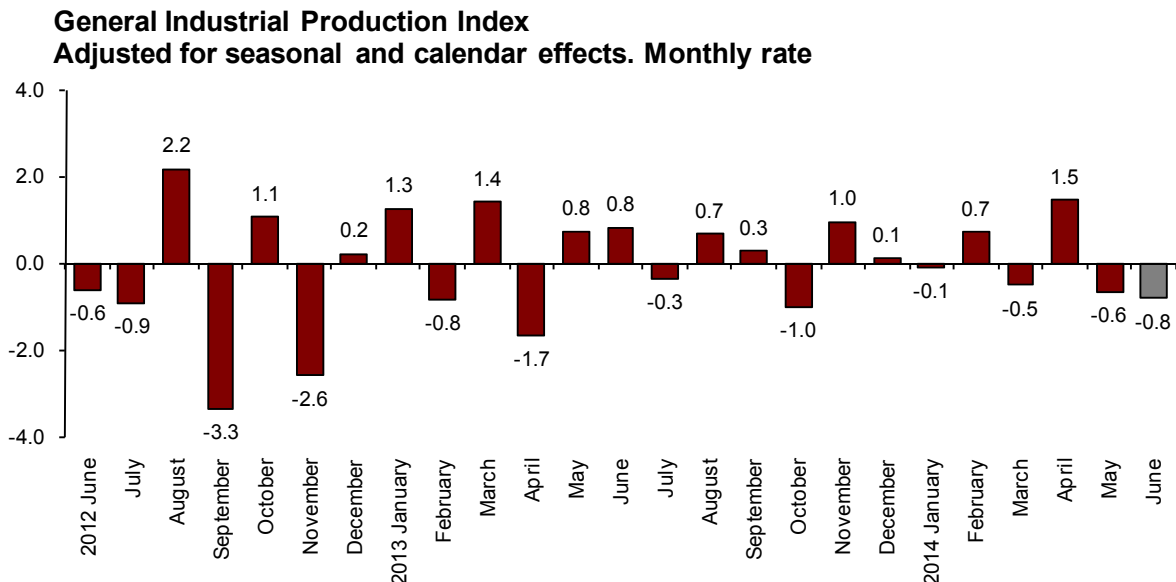
Industrial Production Index (IPI). Base 2010
June 2014. *Provisional data*

The monthly variation of the Industrial Production Index stands at -0.8% , after adjusting the seasonal and calendar effects

The annual rate of the Industrial Production Index stands at 0.8% in the series adjusted for the seasonal and calendar effects and at 2.9% in the original series

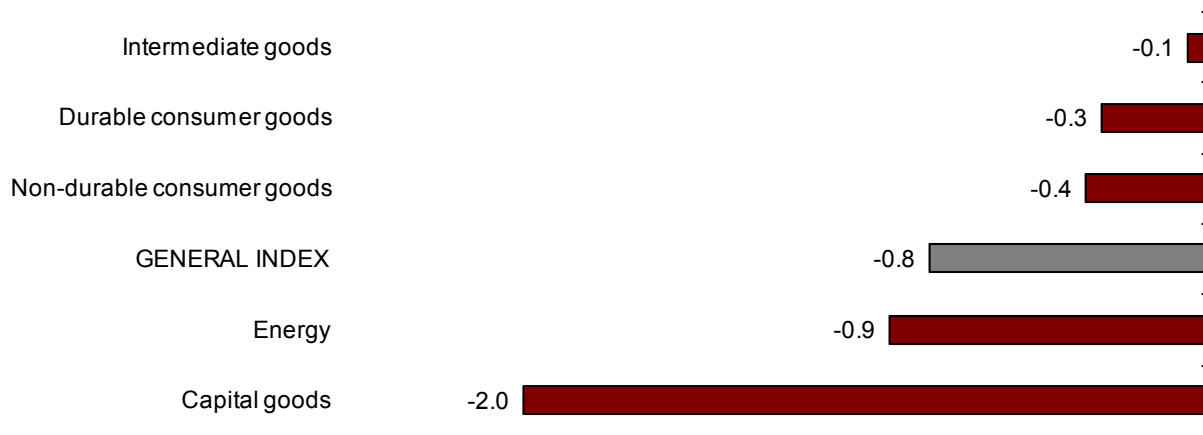
Monthly evolution of the Industrial Production

After adjusting the seasonal and calendar effects, the monthly variation of the Industrial Production Index (IPI) between May and June 2014 stood at -0.8% . This rate was 0.2 points lower than that registered in May.



All industrial sectors registered negative monthly variation rates. Capital goods (–0.2%) and Energy (–0.9%) registered the greatest decreases.

Industrial Production Indices: General and by economic destination of the goods. Adjusted for seasonal and calendar effects. Monthly rate



A more detailed analysis showed the activities that registered the highest and lowest monthly rates in the month of June.

Activities with the highest annual rates of the Industrial Production Indices adjusted for seasonal and calendar effects

Activity (Division from CNAE 2009)	Monthly rate (%)
Tobacco industry	5.3
Other manufacturing industries	4.5
Manufacture of computers, electronic and optical products	2.9

Activities with the lowest annual rates of the Industrial Production Indices adjusted for seasonal and calendar effects

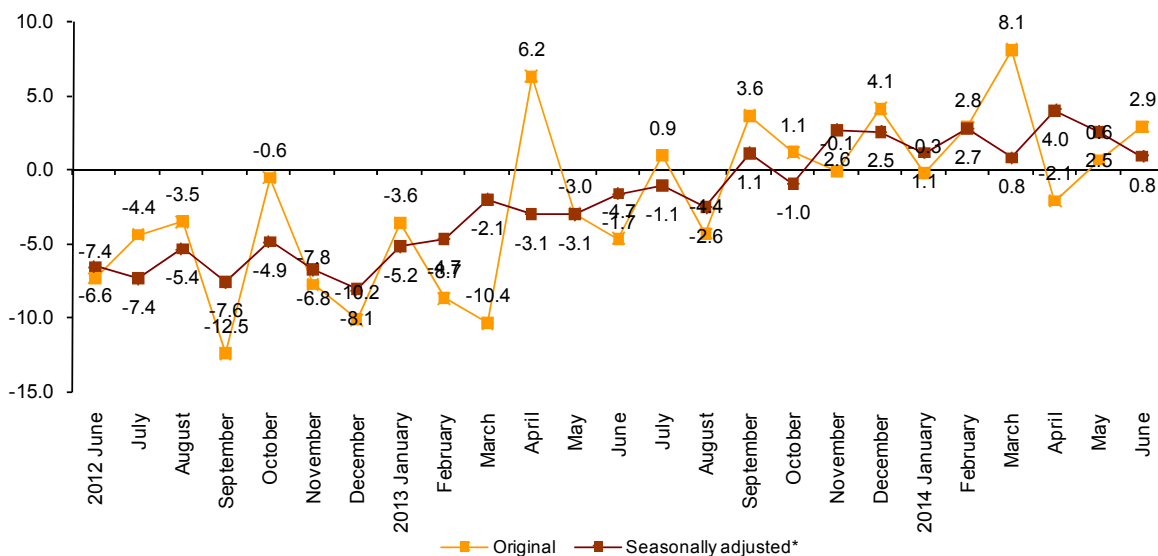
Activity (Division from CNAE 2009)	Monthly rate (%)
Extraction of anthracite, coal and lignite	-13.0
Manufacture of other transport equipment	-8.3
Manufacture of beverages	-6.5

Annual evolution of the Industrial Production

After adjusting the seasonal and calendar effects, the Industrial Production Index (IPI) registered a variation of 0.8% in June, as compared with the same month of the previous year. This rate was 1.7 points below that registered in May.

The original series of the Industrial Production Index recorded an annual variation of 2.9%. This rate was 2.3 points higher than that of May.

**General Industrial Production Index
Annual rate**



After adjusting the seasonal and calendar effects, all industrial sectors registered positive annual rates, except Durable consumer goods (-3.7%) and Capital goods (-2.6%).

Non-durable consumer goods (2.8%) and Intermediate Goods (2.0%) recorded the greatest positive rates.

Annual rates of the Industrial Production Indices: General and by economic destination of the goods

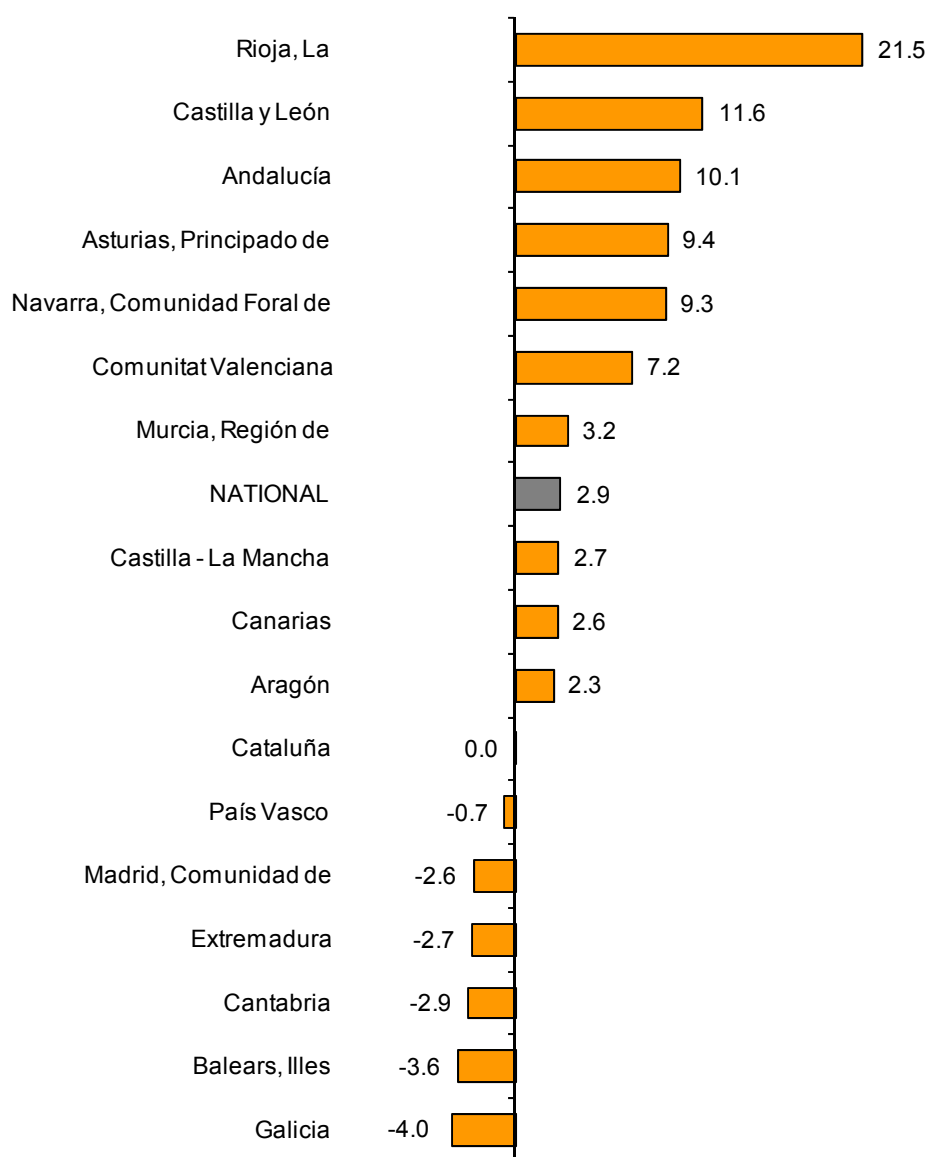
	Original index	Seasonally adjusted index
	Annual rate(%)	Annual rate (%)
GENERAL INDEX	2.9	0.8
1. Consumer goods	4.3	1.4
1.1. Durable consumer goods	-0.5	-3.7
1.2. Non-durable consumer goods	4.7	2.8
2. Capital goods	-0.3	-2.6
3. Intermediate goods	4.5	2.0
4. Energy	1.9	1.0

Results by Autonomous Community. Annual variation rates of the Industrial Production. Original series

The annual rates of the original series of the Industrial Production increased in 10 Autonomous Communities and decreased in six of them. The greatest increases were registered in La Rioja (21.5%), Castilla y León (11.6%) and Andalucía (10.1%).

In turn, the greatest decreases were registered in Galicia (-4.0%), Illes Balears (-3.6%) and Cantabria (-2.9%).

General indices: national and by Autonomous Community Annual rate of the Industrial Production Index



Industrial Production Indices. Base 2010

June 2014

Provisional data

1. General index by economic destination of the goods. Adjusted for seasonal and calendar effects

	Index	Rate (%)		
		Monthly	Annual	Year-to-date average
GENERAL INDEX	91.6	-0.8	0.8	2.0
1. Consumer goods	92.8	-1.3	1.4	2.4
1.1. Durable consumer goods	65.8	-0.3	-3.7	-2.7
1.2. Non-durable consumer goods	96.6	-0.4	2.8	2.6
2. Capital goods	90.3	-2.0	-2.6	3.0
3. Intermediate goods	88.5	-0.1	2.0	2.6
4. Energy	95.7	-0.9	1.0	-0.7

2. General index by economic destination of the goods. Adjusted for calendar effects

	Index	Rate (%)	
		Annual	Year-to-date average
GENERAL INDEX	96.2	0.6	2.1
1. Consumer goods	95.3	1.1	2.5
1.1. Durable consumer goods	70.2	-3.7	-2.5
1.2. Non-durable consumer goods	97.9	1.9	2.8
2. Capital goods	99.8	-3.1	3.2
3. Intermediate goods	96.1	2.1	2.8
4. Energy	94.1	1.2	-0.8

3. General index by economic destination of the goods. Original indices

	Index	Rate (%)		Repercussion
		Annual	Year-to-date average	Annual
GENERAL INDEX	94.7	2.9	1.9	
1. Consumer goods	93.0	4.3	2.2	1.151
1.1. Durable consumer goods	68.5	-0.5	-2.6	-0.012
1.2. Non-durable consumer goods	95.8	4.7	2.7	1.162
2. Capital goods	97.8	-0.3	3.1	-0.078
3. Intermediate goods	94.7	4.5	2.6	1.418
4. Energy	93.7	1.9	-0.8	0.360

4. General index by branch of activity (CNAE 2009)

	Index	Rate (%)		Repercussion
		Annual	Year-to-date average	Annual
GENERAL INDEX	94.7	2.9	1.9	
B. Mining and quarrying industries	55.9	-6.0	0.9	-0.044
Extraction of anthracite, coal and lignite	40.4	-14.0	15.3	-0.019
National crude petroleum and natural gas
Extraction of metallic ores
Other mining and quarrying	58.9	-4.2	-1.9	-0.024
C. Manufacturing industry	95.6	3.1	2.6	2.589
Food Industry	96.3	5.4	4.8	0.644
Manufacture of beverages.	108.2	10.1	4.5	0.378
Tobacco industry.	113.8	23.9	-4.2	0.072
Textile industry	101.4	8.2	1.2	0.092
Manufacture of garments	76.7	-0.8	-4.5	-0.009
Leather and footwear industry	92.4	7.2	4.1	0.051
Manufacture of wood and of products of wood and cork, except furniture; basketm	87.7	10.2	5.4	0.130
Manufacture of paper and paper-products	98.3	1.0	-0.5	0.030
Graphic arts and reproduction of recorded media	69.5	0.6	-3.3	0.010
Manufacture of coke and refined petroleum products	108.9	3.7	1.0	0.074
Chemical Industry	100.1	5.1	3.6	0.314
Manufacture of pharmaceutical products	103.0	-2.7	-1.5	-0.100
Rubber and plastic material transformation industry	99.9	3.4	4.3	0.152
Manufacture of other non-metallic ore products	78.2	4.1	2.5	0.172
Metallurgy; manufacture of iron, steel and ferro-alloy products	101.8	6.2	4.8	0.242
Manufacture of metal products, except machinery and equipment	85.4	-5.1	0.6	-0.433
Manufacture of computers, electronic and optical products	80.8	13.2	9.7	0.146
Manufacture of electrical material and equipment	93.3	5.5	1.9	0.170
Manufacture of machinery and equipment n.e.c.	117.4	-4.3	-2.2	-0.244
Manufacture of motor vehicles, trailers and semi-trailers	119.1	13.1	10.4	0.971
Manufacture of other transport equipment	78.8	-10.7	-3.1	-0.281
Manufacture of furniture.	66.6	-2.9	-4.7	-0.040
Other manufacturing industries	115.7	7.5	3.6	0.096
Repair and installation of machinery and equipment	74.2	-2.5	-1.9	-0.049
D. Supply of electrical energy, gas, steam and air conditioning	83.7	0.3	-2.3	0.046
E. Water supply, activities, waste management and decontamination*	145.4	7.0	5.1	0.261

* It only includes Water collection, treatment and supply

(..) Data not available due to statistical secrecy.

5. General Industrial Production Indices: national and by Autonomous Community

	Index	Rate (%)	
		Annual	Year-to-date average
NACIONAL	94.7	2.9	1.9
Andalucía	94.5	10.1	5.6
Aragón	103.2	2.3	5.2
Asturias, Principado de	93.8	9.4	-1.8
Balears, Illes	93.1	-3.6	-0.3
Canarias	92.5	2.6	-0.8
Cantabria	95.9	-2.9	-2.9
Castilla y León	95.4	11.6	9.3
Castilla-La Mancha	86.3	2.7	1.8
Cataluña	96.2	0.0	1.7
Comunitat Valenciana	104.7	7.2	4.8
Extremadura	77.9	-2.7	3.6
Galicia	84.7	-4.0	-3.6
Madrid, Comunidad de	83.2	-2.6	-2.1
Murcia, Región de	90.9	3.2	0.4
Navarra, Comunidad Foral de	103.7	9.3	6.4
País Vasco	98.0	-0.7	-1.4
Rioja, La	98.3	21.5	4.5

More detailed information by Autonomous Community may be obtained at:

Andalucía	www.juntadeandalucia.es/institutodeestadisticaycartografia
Aragón	www.aragon.es/iaest/ipi
Principado de Asturias	www.sadei.es
Illes Balears	www.ibestat.caib.es
Canarias	www.gobiernodecanarias.org/istac
Cantabria	www.icane.es
Castilla y León	www.jcyl.es/estadistica
Castilla - La Mancha	www.jccm.es/estadistica
Cataluña	www.idescat.cat
Comunitat Valenciana	www.ive.es
Extremadura	http://estadistica.gobex.es
Galicia	www.ige.xunta.es
Comunidad de Madrid	www.madrid.org/iestadis
Región de Murcia	www.carm.es/econet
La Rioja	www.larioja.org

For further information see INEbase - www.ine.es/en/

All press releases at: www.ine.es/en/prensa/prensa_en.htm

Press Office: Telephone numbers: 91 583 93 63 / 94 08 – Fax: 91 583 90 87 - gprensa@ine.es

Information Area: Telephone number: 91 583 91 00 – Fax: 91 583 91 58 – www.ine.es/infoine/?L=1