

08 August 2018

**Industrial Production Indices (IPI). Base 2015**  
June 2018. *Provisional data*

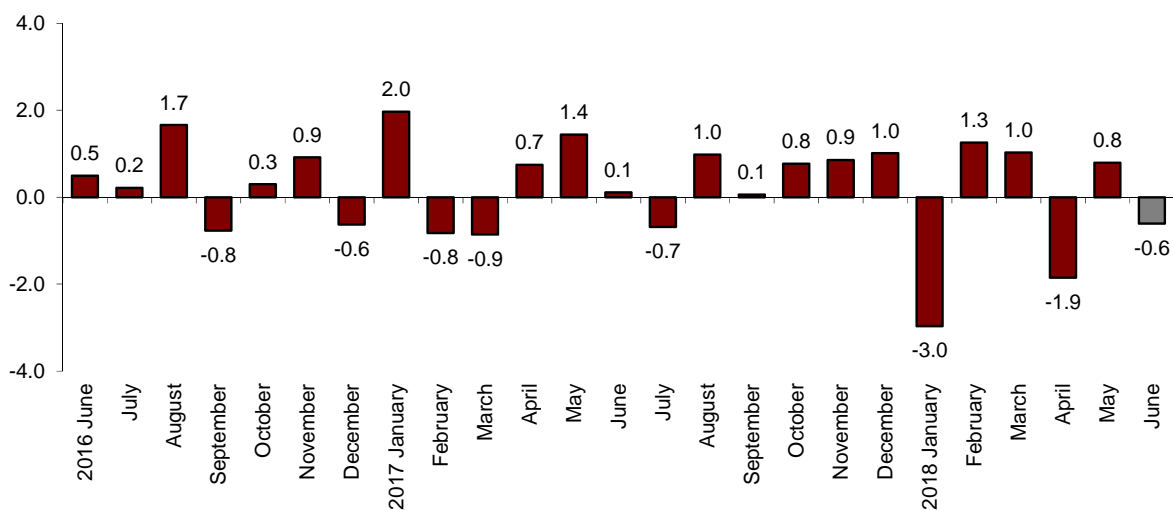
**The monthly variation of the Industrial Production Index stands at -0.6%, after adjusting for seasonal and calendar effects**

**The annual rate of the Industrial Production Index stands at 0.5% in the series adjusted for seasonal and calendar effects and at -2.0% in the original series**

**Monthly evolution of industrial production**

After adjusting for seasonal and calendar effects, the monthly variation of the Industrial Production Index (IPI) between June and May stood at -0.6%. This rate is 1.4 points lower than that observed in May.

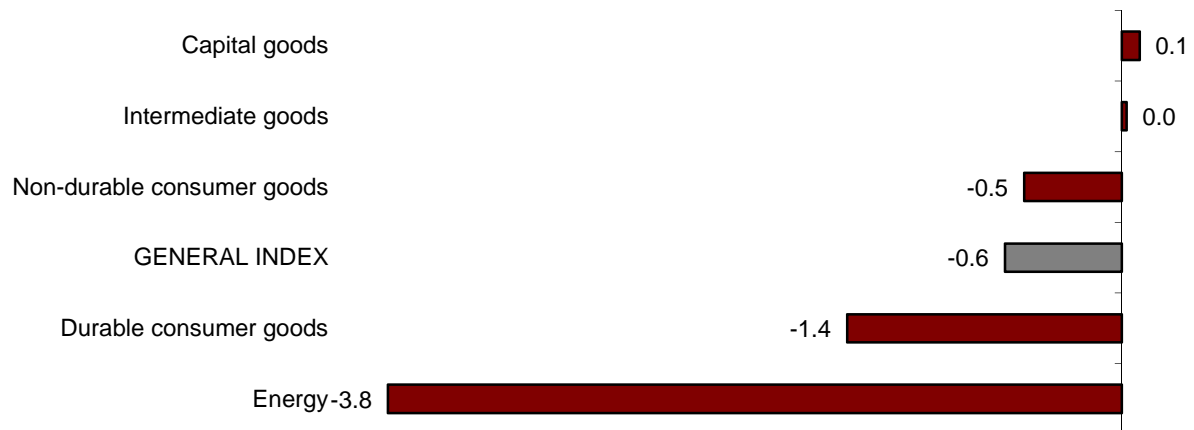
**General Industrial Production Index  
Adjusted for seasonal and calendar effects. Monthly rate**



By sector, *Capital goods* (0.1%) and *Intermediate goods* (0.0%) registered positive monthly rates.

In turn, *Energy* (-3.8%), *Durable consumer goods* (-1.4%) and *Non-durable consumer goods* (-0.5%) registered negative monthly rates.

**Industrial Production Indices: General and by economic destination of the goods. Adjusted for seasonal and calendar effects. Monthly rate**



A more detailed analysis shows the branches of activity with the greatest and lowest monthly rates in the month of June.

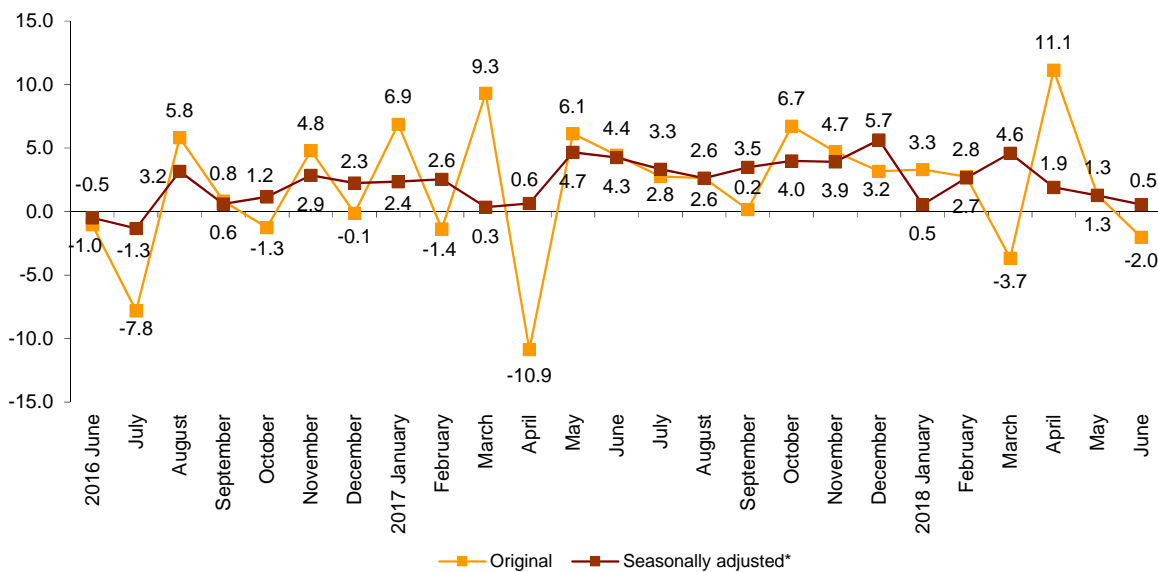
<b>Activities with the highest annual rates of the Industrial Production Indices adjuted for seasonal and calendar effects</b>	
Activity (Division from CNAE 2009)	Monthly rate (%)
Tobacco industry	7.7
Other mining and quarrying	6.3
Other manufacturing industries	5.8
<b>Activities with the lowest annual rates of the Industrial Production Indices adjuted for seasonal and calendar effects</b>	
Activity (Division from CNAE 2009)	Monthly rate (%)
Manufacture of coke and refined petroleum products	-11.7
Extraction of anthracite, coal and lignite	-8.0
Manufacture of wood and of products of wood and cork, except furniture; basketmaking and wickerwork	-6.6

## Annual evolution of industrial production

The Industrial Production Index, adjusted for seasonal and calendar effects, presented in June a variation of 0.5% compared to the same month of the previous year. This rate is 0.8 points lower than that recorded in May.

The original series of the IPI experienced an annual variation of -2.0%. This rate is 3.3 points lower than in May.

**General Industrial Production Index**  
Annual rate



For the indices adjusted for seasonal and calendar effects, *Energy* (-8.3%), *Durable consumer goods* (-4.0%) and *Non-durable consumer goods* (-0.7%) presented negative annual rates.

In turn, both *Capital goods* and *Intermediate goods* registered an increase of 4.2% in the annual rate.

**Annual rates of the Industrial Production Indices:**  
**General and by economic destination of the goods**

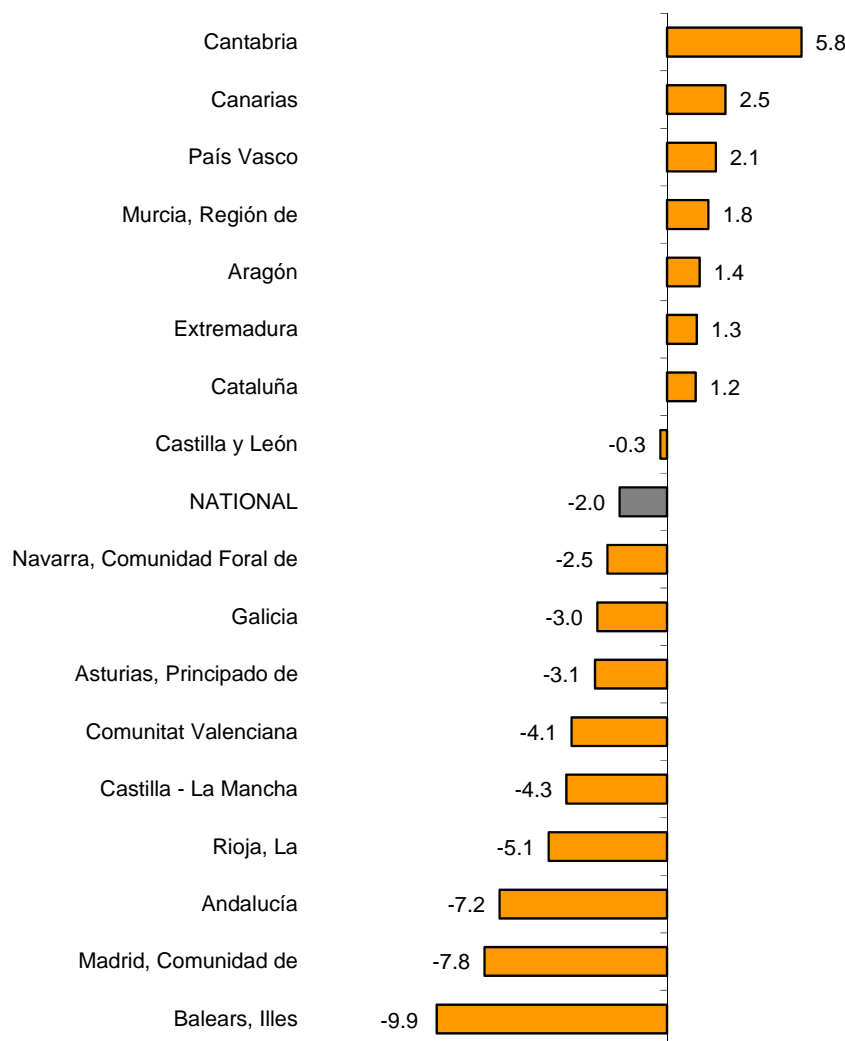
	Original index	Seasonally adjusted index
	Annual rate(%)	Annual rate (%)
<b>GENERAL INDEX</b>	-2.0	0.5
1. Consumer goods	-3.7	-0.7
1.1. Durable consumer goods	-8.0	-4.0
1.2. Non-durable consumer goods	-3.3	-0.7
2. Capital goods	0.9	4.2
3. Intermediate goods	1.7	4.2
4. Energy	-9.2	-8.3

## Results by Autonomous Communities. Annual variation rates of industrial production. Original series

In June, the annual rate of industrial production was positive in seven Autonomous Communities. Cantabria (5.8%), Canarias (2.5%) and País Vasco (2.1%) registered the greatest increases.

In turn, the largest decreases were registered in Illes Balears (-9.9%), Comunidad de Madrid (-7.8%) and Andalucía (-7.2%).

### General indices: national and by Autonomous Community Annual rate of the Industrial Production Index



For further information see **INEbase**: [www.ine.es/en/](http://www.ine.es/en/) Twitter: [@es\\_ine](https://twitter.com/es_ine)

All press releases at: [www.ine.es/en/prensa/prensa\\_en.htm](http://www.ine.es/en/prensa/prensa_en.htm)

Press office: Telephone numbers: (+34) 91 583 93 63 /94 08 – [gprensa@ine.es](mailto:gprensa@ine.es)

Information Area: Telephone number: (+34) 91 583 91 00 – [www.ine.es/infoine/?L=1](http://www.ine.es/infoine/?L=1)

## Industrial Production Indices. Base 2015

June 2018

Provisional data

### 1. General index by economic destination of the goods. Adjusted for seasonal and calendar effects

	Index	Rate (%)		
		Monthly	Annual	Year-to-date average
<b>GENERAL INDEX</b>	<b>105.6</b>	<b>-0.6</b>	<b>0.5</b>	<b>1.9</b>
1. Consumer goods	101.8	-0.1	-0.7	0.0
1.1. Durable consumer goods	104.0	-1.4	-4.0	-1.8
1.2. Non-durable consumer goods	101.4	-0.5	-0.7	0.0
2. Capital goods	111.7	0.1	4.2	3.8
3. Intermediate goods	110.7	0.0	4.2	3.6
4. Energy	95.5	-3.8	-8.3	0.1

### 2. General index by economic destination of the goods. Adjusted for calendar effects

	Index	Rate (%)	
		Annual	Year-to-date average
<b>GENERAL INDEX</b>	<b>109.4</b>	<b>0.2</b>	<b>1.8</b>
1. Consumer goods	103.4	-0.9	0.0
1.1. Durable consumer goods	110.6	-4.8	-1.9
1.2. Non-durable consumer goods	102.7	-0.7	-0.1
2. Capital goods	122.3	4.1	3.6
3. Intermediate goods	116.9	4.0	3.4
4. Energy	92.7	-8.6	0.0

### 3. General index by economic destination of the goods. Original indices

	Index	Rate (%)		Repercussion
		Annual	Year-to-date average	Annual
<b>GENERAL INDEX</b>	<b>108.8</b>	<b>-2.0</b>	<b>1.8</b>	
1. Consumer goods	102.8	-3.7	0.0	-0.915
1.1. Durable consumer goods	109.5	-8.0	-2.0	-0.173
1.2. Non-durable consumer goods	102.3	-3.3	0.1	-0.742
2. Capital goods	121.3	0.9	3.4	0.220
3. Intermediate goods	116.3	1.7	3.4	0.517
4. Energy	92.6	-9.2	0.0	-1.849

#### 4. General index by branch of activity (CNAE 2009)

	Index	Rate (%)		Repercussion
		Annual	Year-to-date average	Annual
<b>GENERAL INDEX</b>	<b>108.8</b>	<b>-2.0</b>	<b>1.8</b>	
<b>B. Mining and quarrying industries</b>	99.3	6.0	4.4	0.035
Extraction of anthracite, coal and lignite	..	..	..	..
National crude petroleum and natural gas	..	..	..	..
Extraction of metallic ores	..	..	..	..
Other mining and quarrying	102.5	10.0	2.2	0.048
<b>C. Manufacturing industry</b>	112.9	-0.5	2.3	-0.401
Food Industry	100.9	-1.8	0.4	-0.194
Manufacture of beverages.	107.2	-7.5	-3.4	-0.257
Tobacco industry.	..	..	..	..
Textile industry	111.1	-3.3	0.5	-0.037
Manufacture of garments	97.2	-12.6	-2.8	-0.117
Leather and footwear industry	90.6	-4.8	-2.1	-0.039
Manufacture of wood and of products of wood and cork, except furniture; basketm	118.2	-7.7	7.3	-0.111
Manufacture of paper and paper-products	105.1	-1.2	0.3	-0.028
Graphic arts and reproduction of recorded media	79.9	-8.2	-1.7	-0.106
Manufacture of coke and refined petroleum products	97.2	-7.9	3.2	-0.178
Chemical Industry	109.6	1.2	3.0	0.075
Manufacture of pharmaceutical products	112.8	-3.7	2.5	-0.141
Rubber and plastic material transformation industry	120.6	1.7	2.8	0.082
Manufacture of other non-metallic ore products	116.3	2.1	1.9	0.079
Metallurgy; manufacture of iron, steel and ferro-alloy products	114.4	2.9	2.9	0.098
Manufacture of metal products, except machinery and equipment	118.3	2.0	2.7	0.168
Manufacture of computers, electronic and optical products	121.4	12.8	7.8	0.131
Manufacture of electrical material and equipment	122.5	4.2	4.8	0.124
Manufacture of machinery and equipment n.e.c.	136.9	4.2	6.9	0.228
Manufacture of motor vehicles, trailers and semi-trailers	116.5	-1.6	1.6	-0.143
Manufacture of other transport equipment	118.9	-5.3	1.8	-0.164
Manufacture of furniture.	117.2	-3.9	0.5	-0.054
Other manufacturing industries	126.2	4.4	3.4	0.052
Repair and installation of machinery and equipment	120.8	4.6	7.8	0.132
<b>D. Supply of electrical energy, gas, steam and air conditioning</b>	88.2	-9.4	0.9	-1.363
<b>E. Water supply, activities, waste management and decontamination*</b>	115.2	-9.1	-7.4	-0.298

\* It only includes Water collection, treatment and supply

(..) Data not available due to statistical secrecy.

## 5. General Industrial Production Indices: national and by Autonomous Community

	Index	Rate (%)	
		Annual	Year-to-date average
<b>NACIONAL</b>	<b>108.8</b>	<b>-2.0</b>	<b>1.8</b>
Andalucía	102.3	-7.2	-1.3
Aragón	116.7	1.4	2.9
Asturias, Principado de	105.5	-3.1	2.2
Balears, Illes	103.1	-9.9	-5.1
Canarias	98.7	2.5	1.6
Cantabria	117.7	5.8	9.0
Castilla y León	103.9	-0.3	2.5
Castilla-La Mancha	100.2	-4.3	0.3
Cataluña	112.9	1.2	3.6
Comunitat Valenciana	111.4	-4.1	-0.4
Extremadura	99.6	1.3	1.8
Galicia	108.1	-3.0	8.0
Madrid, Comunidad de	104.3	-7.8	-1.1
Murcia, Región de	114.2	1.8	3.5
Navarra, Comunidad Foral de	111.8	-2.5	0.3
País Vasco	113.4	2.1	2.5
Rioja, La	92.7	-5.1	-1.0

More detailed information by Autonomous Community may be obtained at:

Andalucía	<a href="http://www.juntadeandalucia.es/institutodeestadisticaycartografia">www.juntadeandalucia.es/institutodeestadisticaycartografia</a>
Aragón	<a href="http://www.aragon.es/iaest/ipi">www.aragon.es/iaest/ipi</a>
Principado de Asturias	<a href="http://www.sadei.es">www.sadei.es</a>
Illes Balears	<a href="http://www.ibestat.caib.es">www.ibestat.caib.es</a>
Canarias	<a href="http://www.gobiernodecanarias.org/istac">www.gobiernodecanarias.org/istac</a>
Cantabria	<a href="http://www.icane.es">www.icane.es</a>
Castilla y León	<a href="http://www.jcyl.es/estadistica">www.jcyl.es/estadistica</a>
Castilla - La Mancha	<a href="http://www.jccm.es/estadistica">www.jccm.es/estadistica</a>
Cataluña	<a href="http://www.idescat.cat">www.idescat.cat</a>
Comunitat Valenciana	<a href="http://www.ive.es">www.ive.es</a>
Extremadura	<a href="http://estadistica.juntaex.es">http://estadistica.juntaex.es</a>
Galicia	<a href="http://www.ige.xunta.es">www.ige.xunta.es</a>
Comunidad de Madrid	<a href="http://www.madrid.org/iestadis">www.madrid.org/iestadis</a>
Región de Murcia	<a href="http://econet.carm.es">http://econet.carm.es</a>
La Rioja	<a href="http://www.larioja.org">www.larioja.org</a>